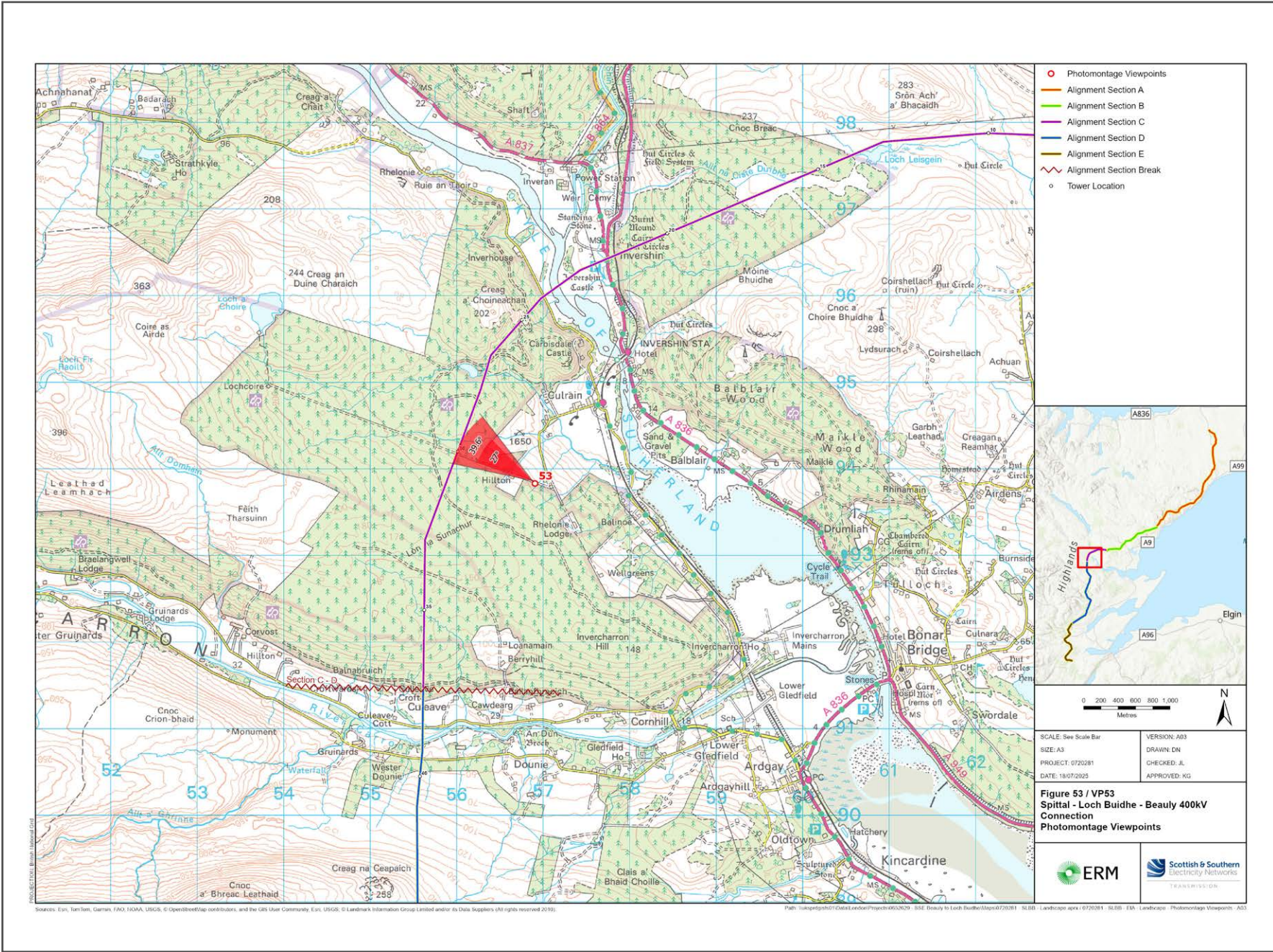


V4b Figure 7-53a Viewpoint 53: Lower Hilton

Reproduced from Ordnance Survey digital map data © Crown copyright 2020. All rights reserved. Licence number 100048606



Grid Reference: 256906 893829 Distance to development : 994m AOD: 86m Direction of view: 327°

This viewpoint is located on the roadside just passed Lower Hilton Cottage.

From Culrain station, head south on Inveroykel Culrain and then turn Right, keep driving for 1287 meters and then turn right.

Keep driving for atleast 321 meters until you reach the viewpoint location as shown in the adjacent photograph.

Extent of 50mm single frame image



Photomontage

V4b Figure 7-53b Viewpoint 53: Lower Hilton Distance to development: 994m Camera: Canon EOS R5 Focal Length: 50mm vertical (27°) x 28mm horizontal (65.5°) Camera height: 1.5m Date: 10/12/2024 09:45

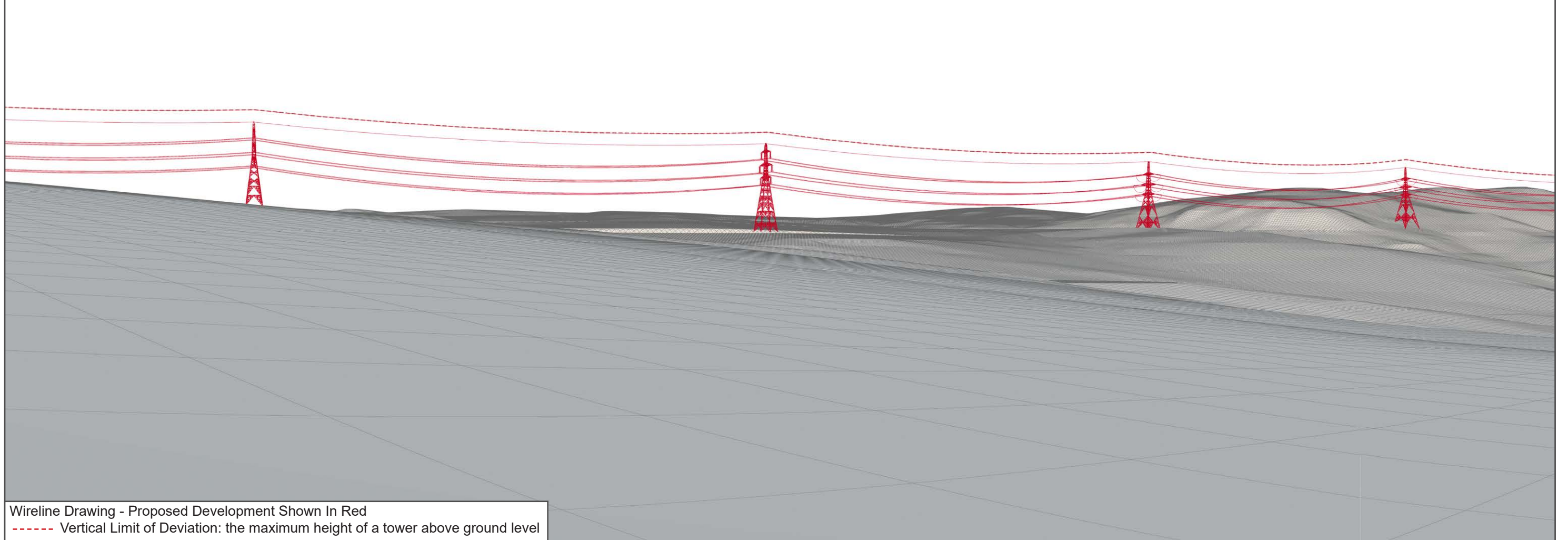
The images contained on this page and the following page are not representative of scale and distance from the actual viewpoint and show the development in its wider landscape context only.

For empirical testing, the wireline image on the next page can be accurately assessed in the field when converted to a transparency. If viewed with one eye at a distance of 300mm from exactly the same location and height as the original camera lens, the image will fit the real landscape cues.



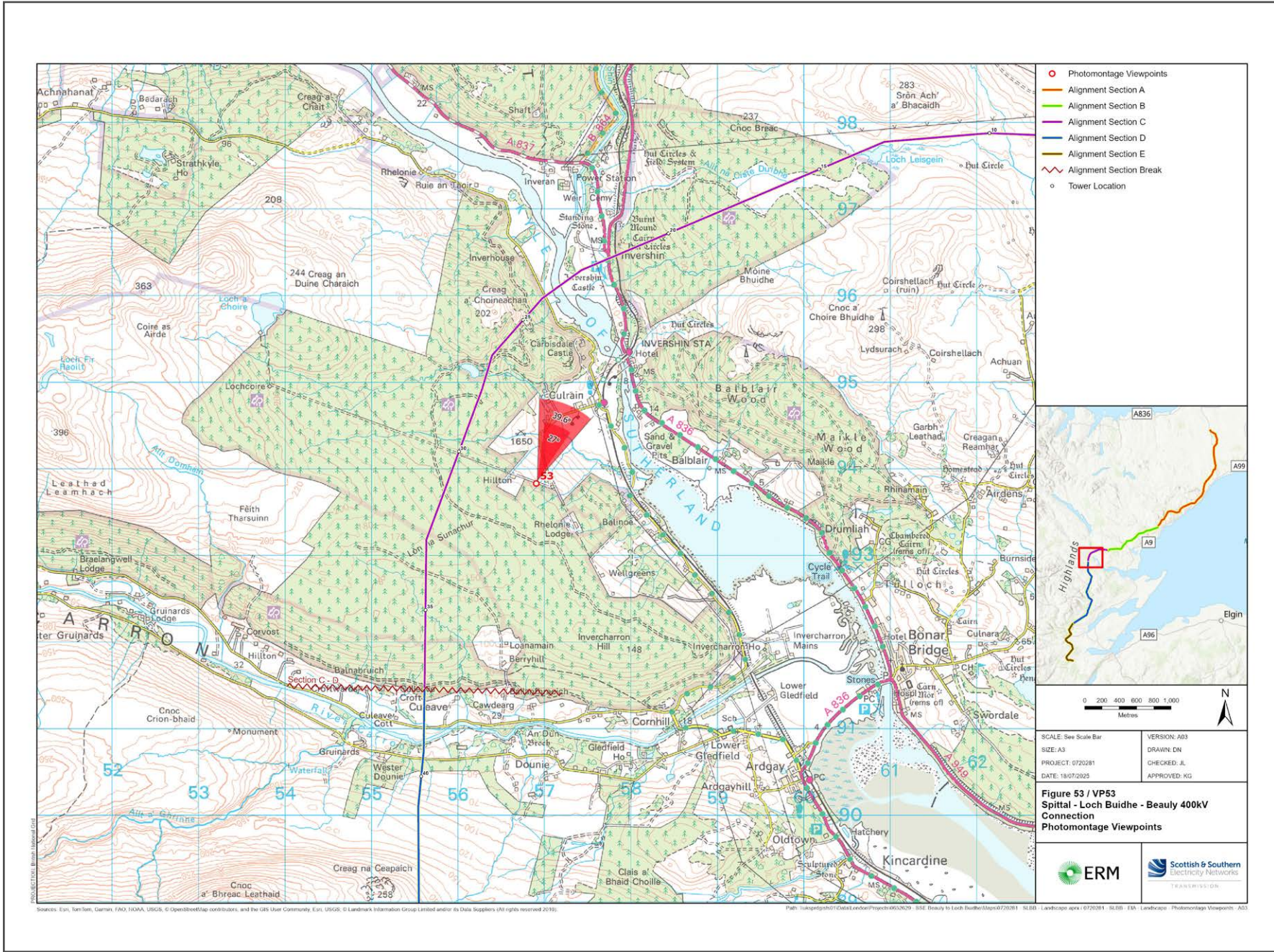
V4b Figure 7-53c Viewpoint 53: Lower Hilton - Existing View

V4b Figure 7-53d Viewpoint 53: Lower Hilton - Wireline Overlay



V4b Figure 7-53a(i) Viewpoint 53: Lower Hilton

Reproduced from Ordnance Survey digital map data © Crown copyright 2020. All rights reserved. Licence number 100048606



Grid Reference: 256906 893829 Distance to development : 994m AOD: 86m Direction of view: 24°

This viewpoint is located on the roadside just passed Lower Hilton Cottage.

From Culrain station, head south on Inveroykel Culrain and then turn Right, keep driving for 1287 meters and then turn right.

Keep driving for atleast 321 meters until you reach the viewpoint location as shown in the adjacent photograph.

Extent of 50mm single frame image



Photomontage

V4b Figure 7-53b(i) Viewpoint 53: Lower Hilton Distance to development: 3015m Camera: Canon EOS R5 Focal Length: 50mm vertical (27°) x 28mm horizontal (65.5°) Camera height: 1.5m Date: 10/12/2024 09:45

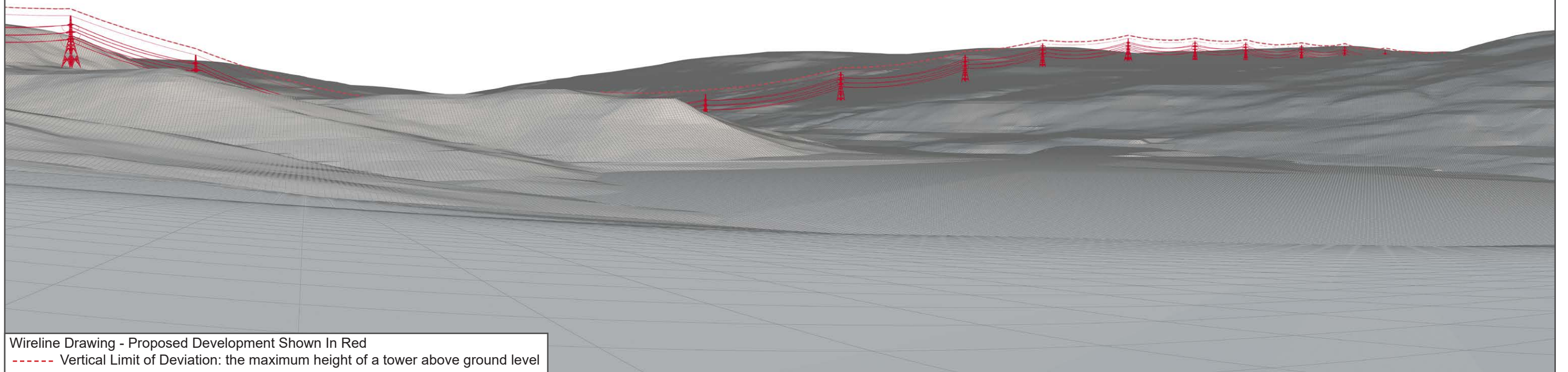
The images contained on this page and the following page are not representative of scale and distance from the actual viewpoint and show the development in its wider landscape context only.

For empirical testing, the wireline image on the next page can be accurately assessed in the field when converted to a transparency. If viewed with one eye at a distance of 300mm from exactly the same location and height as the original camera lens, the image will fit the real landscape cues.



V4b Figure 7-53c(i) Viewpoint 53: Lower Hilton - Existing View

V4b Figure 7-53d(i) Viewpoint 53: Lower Hilton - Wireline Overlay





V4b Figure 7-53b(ii) Viewpoint 53: Lower Hilton

Distance to development: 994m

Camera: Canon EOS R5

Focal Length: 50mm

Camera height: 1.5m

Date: 10/12/2024 09:45

This image should be viewed at a comfortable arms length (approx. 500mm)



V4b Figure 7-53b(iii) Viewpoint 53: Lower Hilton

Distance to development: 994m Camera: Canon EOS R5 Focal Length: 75mm Camera height: 1.5m Date: 10/12/2024 09:45

This image should be viewed at a comfortable arms length (approx. 500mm)