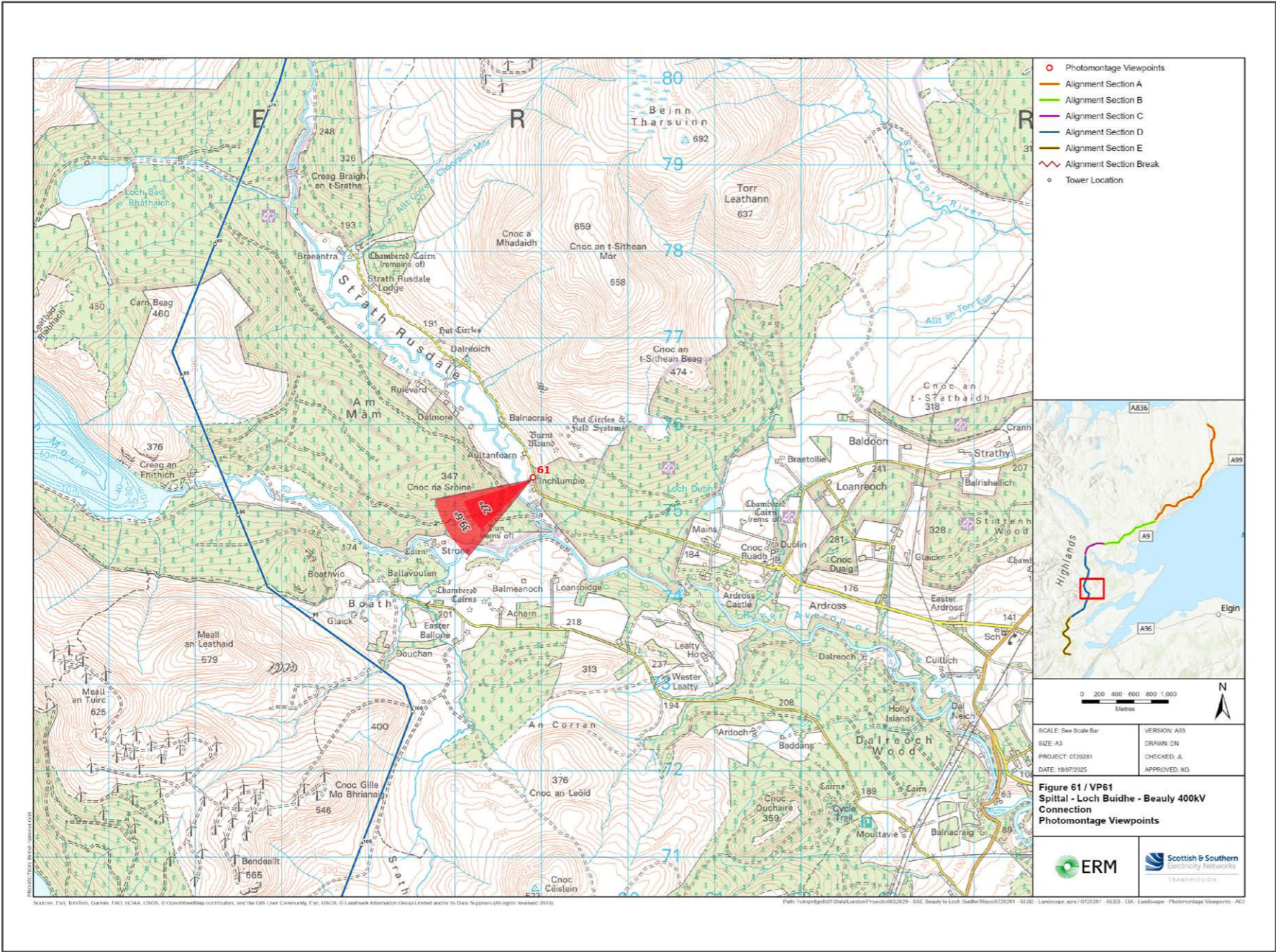


V4b Figure 7-61a Viewpoint 61: Strath Rusdale



Grid Reference: 258903 875388 Distance to development : 2915m AOD: 186m Direction of view: 240°

From Alness, head east on Alness Academy Dr. after 321 meters turn left onto Dalmore Road/B817.
Travel for further 965 meters and then turn right onto Ardross road. After 3540 meters turn right onto Struie road/B9176.

Travel for 965 meters and then turn left. Travel for further 5793 meters and you will arrive at the viewpoint location as shown in the adjacent photograph.

Extent of 50mm single frame image



V4b Figure 7-61b Viewpoint 61: Strath Rusdale

Distance to development: 2915m Camera: Canon EOS R5 Focal Length: 50mm vertical (27°) x 28mm horizontal (65.5°) Camera height: 1.5m Date: 2/10/2024 13:00

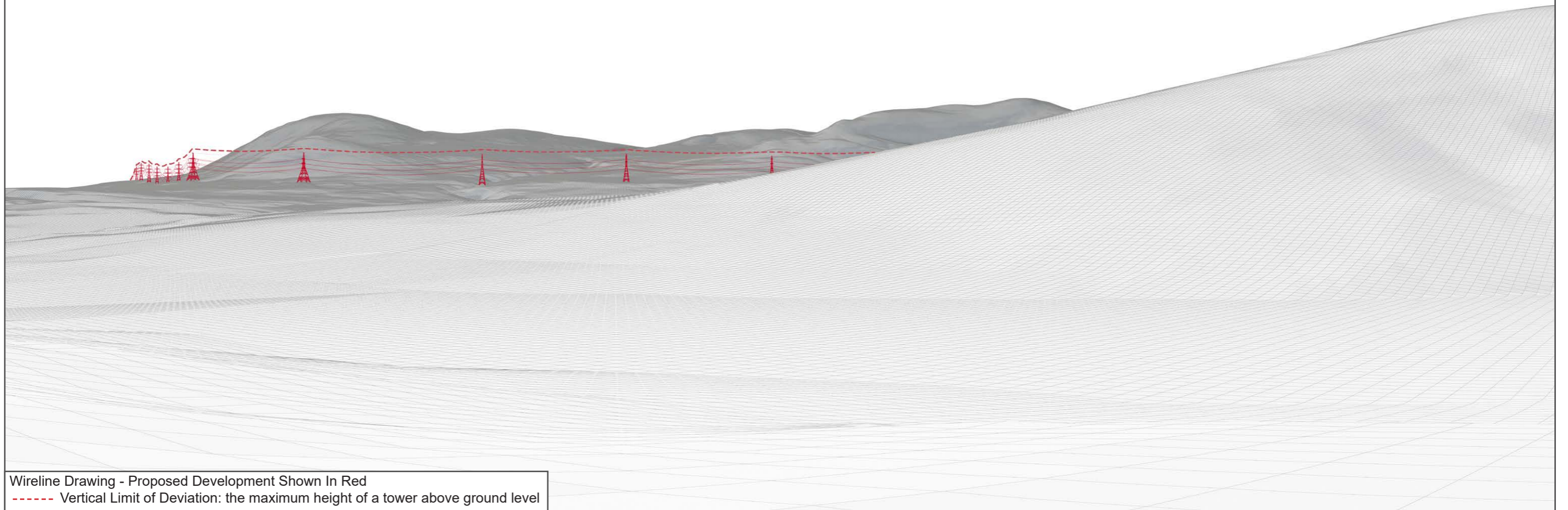
The images contained on this page and the following page are not representative of scale and distance from the actual viewpoint and show the wind farm development in its wider landscape context only.

For empirical testing, the wireline image on the next page can be accurately assessed in the field when converted to a transparency. If viewed with one eye at a distance of 300mm from exactly the same location and height as the original camera lens, the image will fit the real landscape cues.



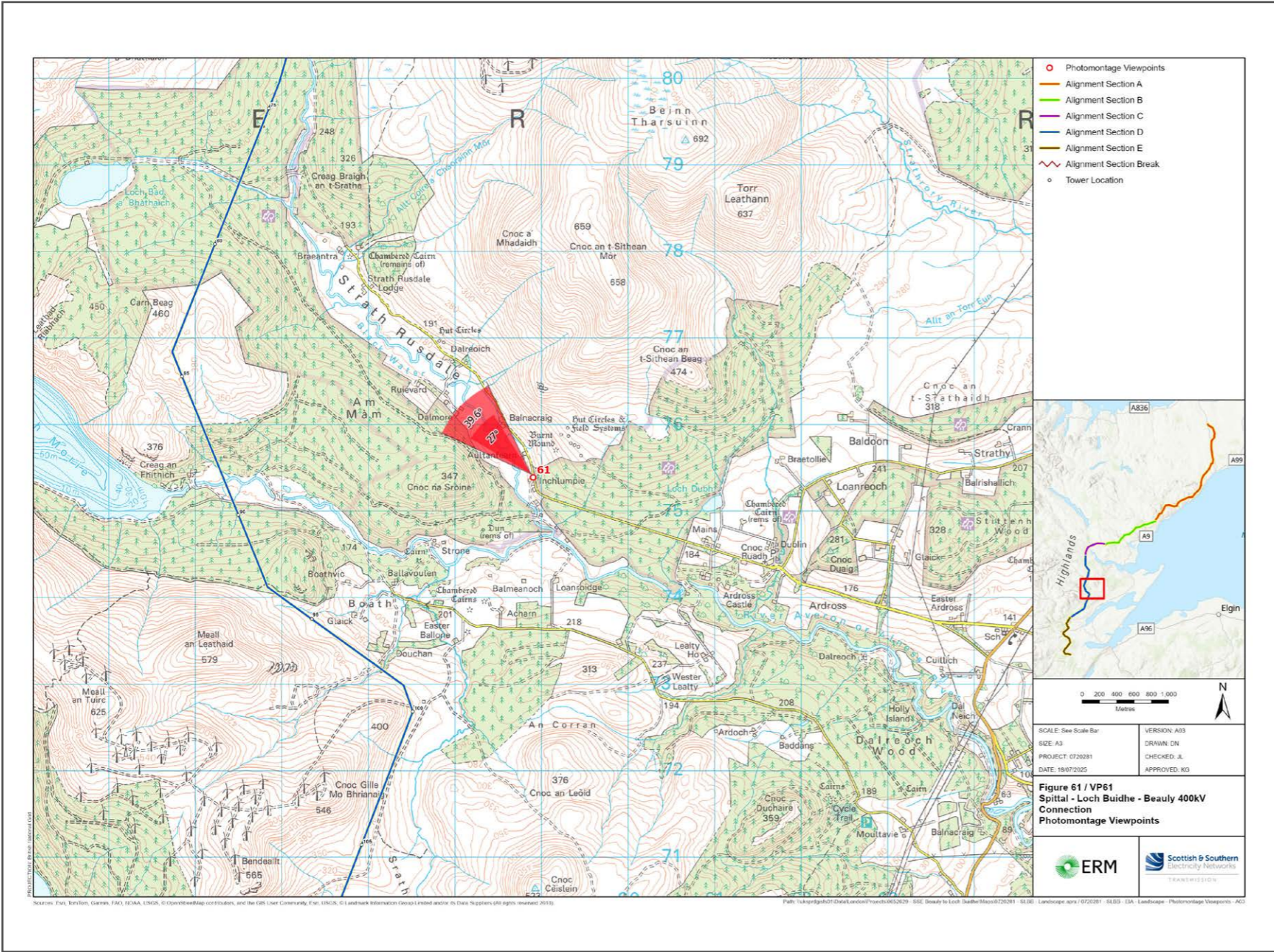
V4b Figure 7-61c Viewpoint 61: Ben Bhraggie - Existing View

V4b Figure 7-61d Viewpoint 61: Ben Bhraggie - Wireline Overlay



V4b Figure 7-61a(i) Viewpoint 61: Strath Rusdale

Reproduced from Ordnance Survey digital map data © Crown copyright 2020. All rights reserved. Licence number 100048606



Grid Reference: 258903 875388 Distance to development : 2915m AOD: 186m Direction of view: 305°

From Alness, head east on Alness Academy Dr. after 321 meters turn left onto Dalmore Road/B817.
Travel for further 965 meters and then turn right onto Ardross road. After 3540 meters turn right onto Struie road/B9176.

Travel for 965 meters and then turn left. Travel for further 5793 meters and you will arrive at the viewpoint location as shown in the adjacent photograph.

Extent of 50mm single frame image



V4b Figure 7-61b(i) Viewpoint 61: Strath Rusdale Distance to development: 2915m Camera: Canon EOS R5 Focal Length: 50mm vertical (27°) x 28mm horizontal (65.5°) Camera height: 1.5m Date: 2/10/2024 13:00

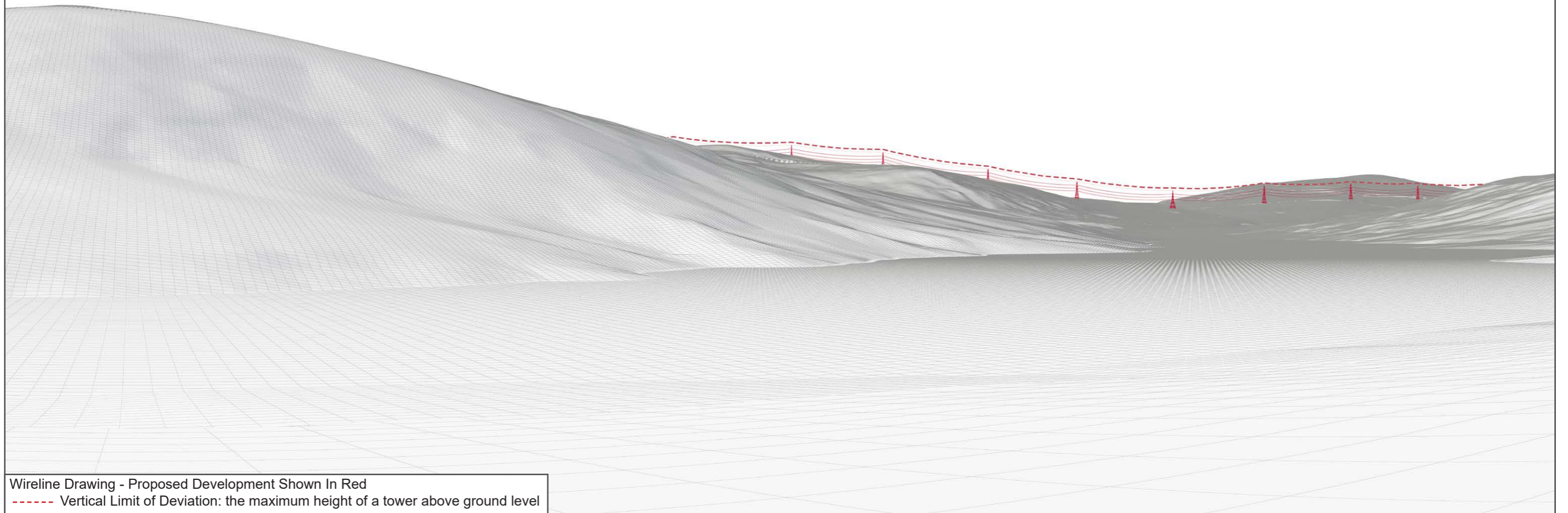
The images contained on this page and the following page are not representative of scale and distance from the actual viewpoint and show the wind farm development in its wider landscape context only.

For empirical testing, the wireline image on the next page can be accurately assessed in the field when converted to a transparency. If viewed with one eye at a distance of 300mm from exactly the same location and height as the original camera lens, the image will fit the real landscape cues.



V4b Figure 7-61c(i) Viewpoint 61: Ben Bhraggie - Existing View

V4b Figure 7-61d(i) Viewpoint 61: Ben Bhraggie - Wireline Overlay





V4b Figure 7-61b(ii) Viewpoint 61: Strath Rusdale

Distance to development: 2915m Camera: Canon EOS R5 Focal Length: 50mm Camera height: 1.5m Date: 2/10/2024 13:00

This image should be viewed at a comfortable arms length (approx. 500mm)



V4b Figure 7-61b(iii) Viewpoint 61: Strath Rusdale

Distance to development: 2915m Camera: Canon EOS R5 Focal Length: 75mm Camera height: 1.5m Date: 2/10/2024 13:00

This image should be viewed at a comfortable arms length (approx. 500mm)