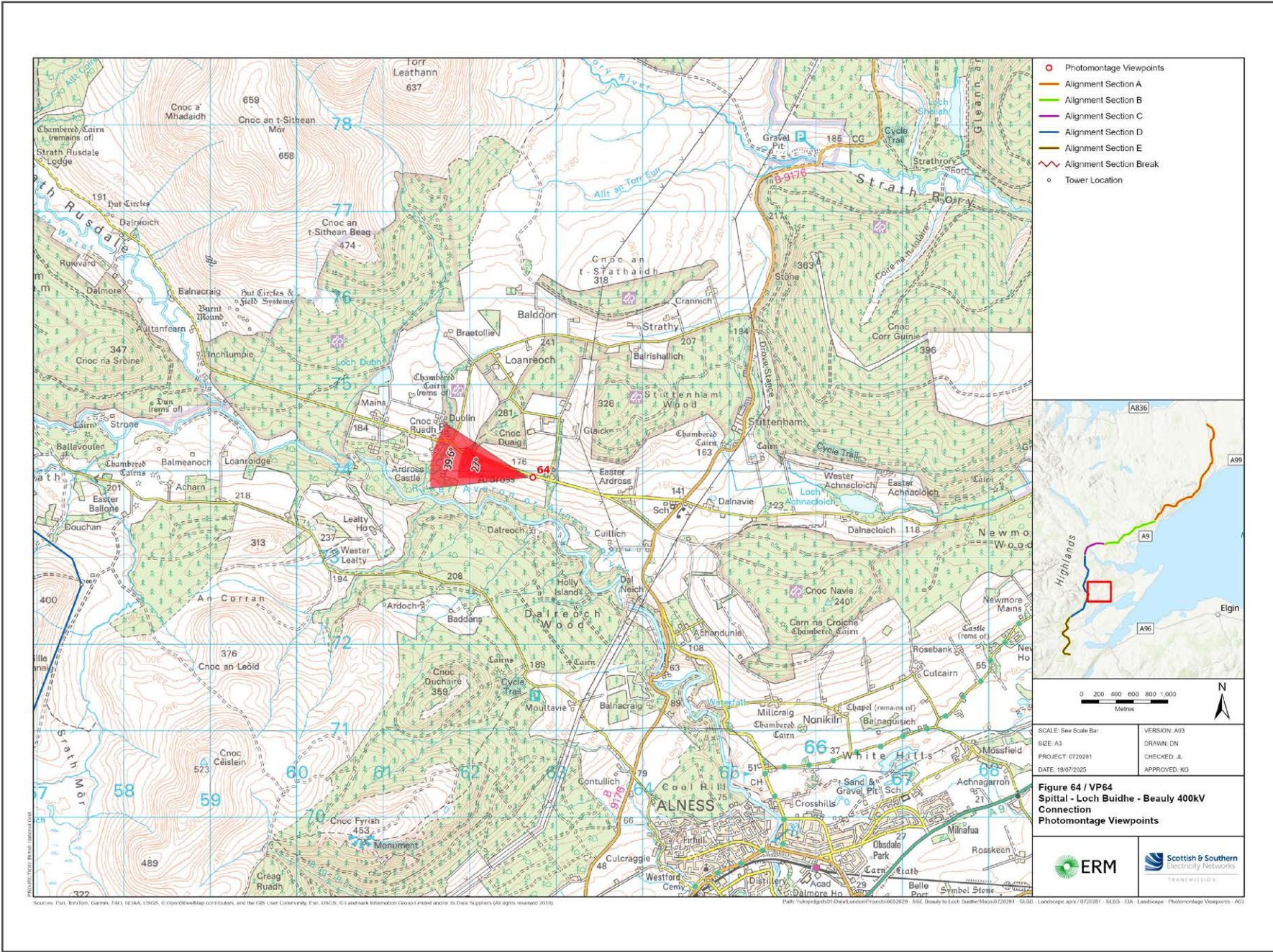


V4b Figure 7-64a Viewpoint 64: Ardross (east)

Reproduced from Ordnance Survey digital map data © Crown copyright 2020. All rights reserved. Licence number 100048606

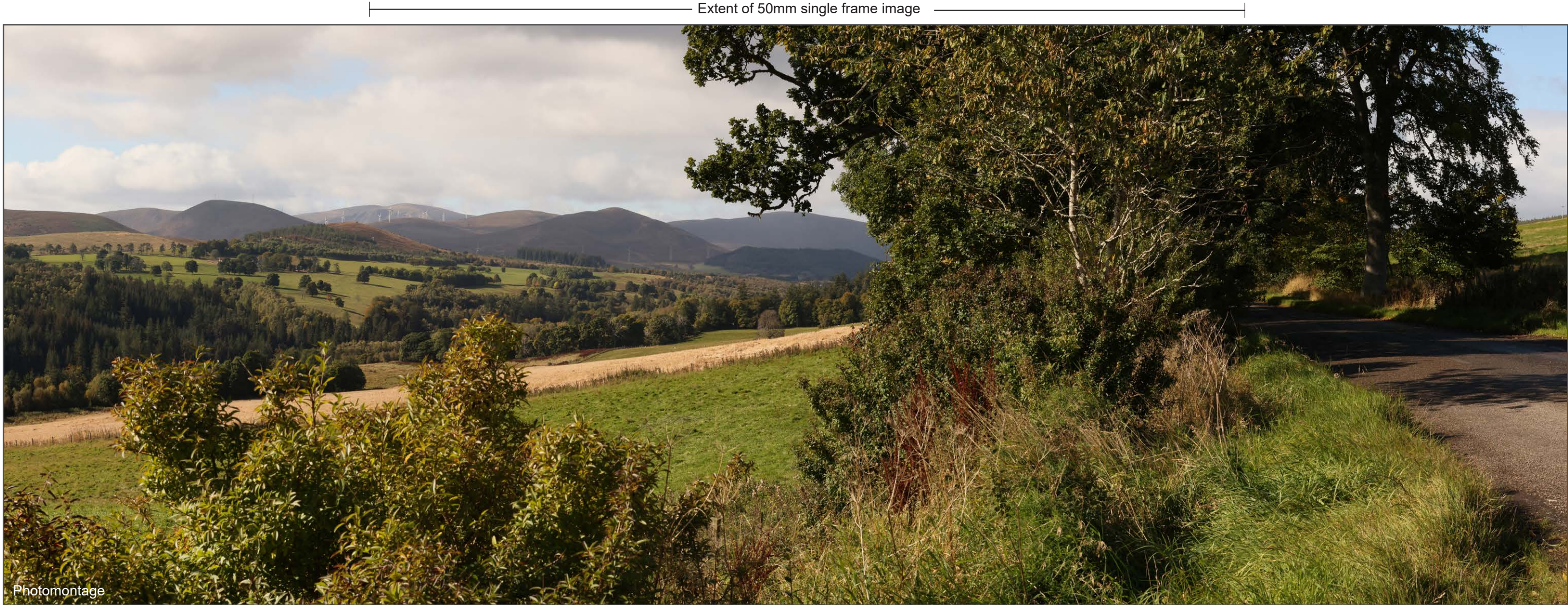


Grid Reference: 262730 873926 Distance to development : 6989m AOD: 174m Direction of view: 278.3°

From Invershin station, head east on Alness Academy Dr. After 321 meters turn left onto Dalmore road / B817.

Travel for further 965 meters then turn right onto Ardross road. After 3540 meters turn right onto Struie Road / B9176. Keep travelling for 965 meters and then turn left.

After 1609 meters, the viewpoint location will be on the side of the road as shown in the adjacent photograph.



V4b Figure 7-64b Viewpoint 64: Ardross (east) Distance to development: 6989m Camera: Canon EOS R5 Focal Length: 50mm vertical (27°) x 28mm horizontal (65.5°) Camera height: 1.5m Date: 27/09/2024 12:30

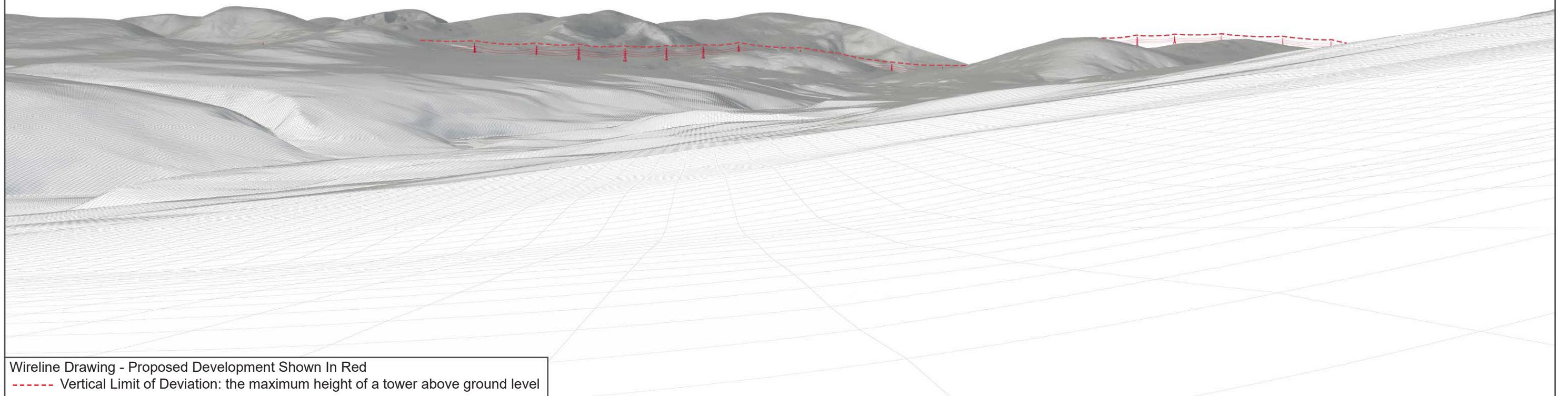
The images contained on this page and the following page are not representative of scale and distance from the actual viewpoint and show the development in its wider landscape context only.

For empirical testing, the wireline image on the next page can be accurately assessed in the field when converted to a transparency. If viewed with one eye at a distance of 300mm from exactly the same location and height as the original camera lens, the image will fit the real landscape cues.



V4b Figure 7-64c Viewpoint 64: Ardross (east)- Existing View

V4b Figure 7-64d Viewpoint 64: Ardross (east) - Wireline Overlay



Wireline Drawing - Proposed Development Shown In Red
 ----- Vertical Limit of Deviation: the maximum height of a tower above ground level



V4b Figure 7-64b(i) Viewpoint 64: Ardross (east)

Distance to development: 6989m Camera: Canon EOS R5 Focal Length: 50mm Camera height: 1.5m Date: 27/09/2024 12:30

This image should be viewed at a comfortable arms length (approx. 500mm)



V4b Figure 7-64b(ii) Viewpoint 64: Ardross (east)

Distance to development: 6989m Camera: Canon EOS R5 Focal Length: 75mm Camera height: 1.5m Date: 27/09/2024 12:30

This image should be viewed at a comfortable arms length (approx. 500mm)