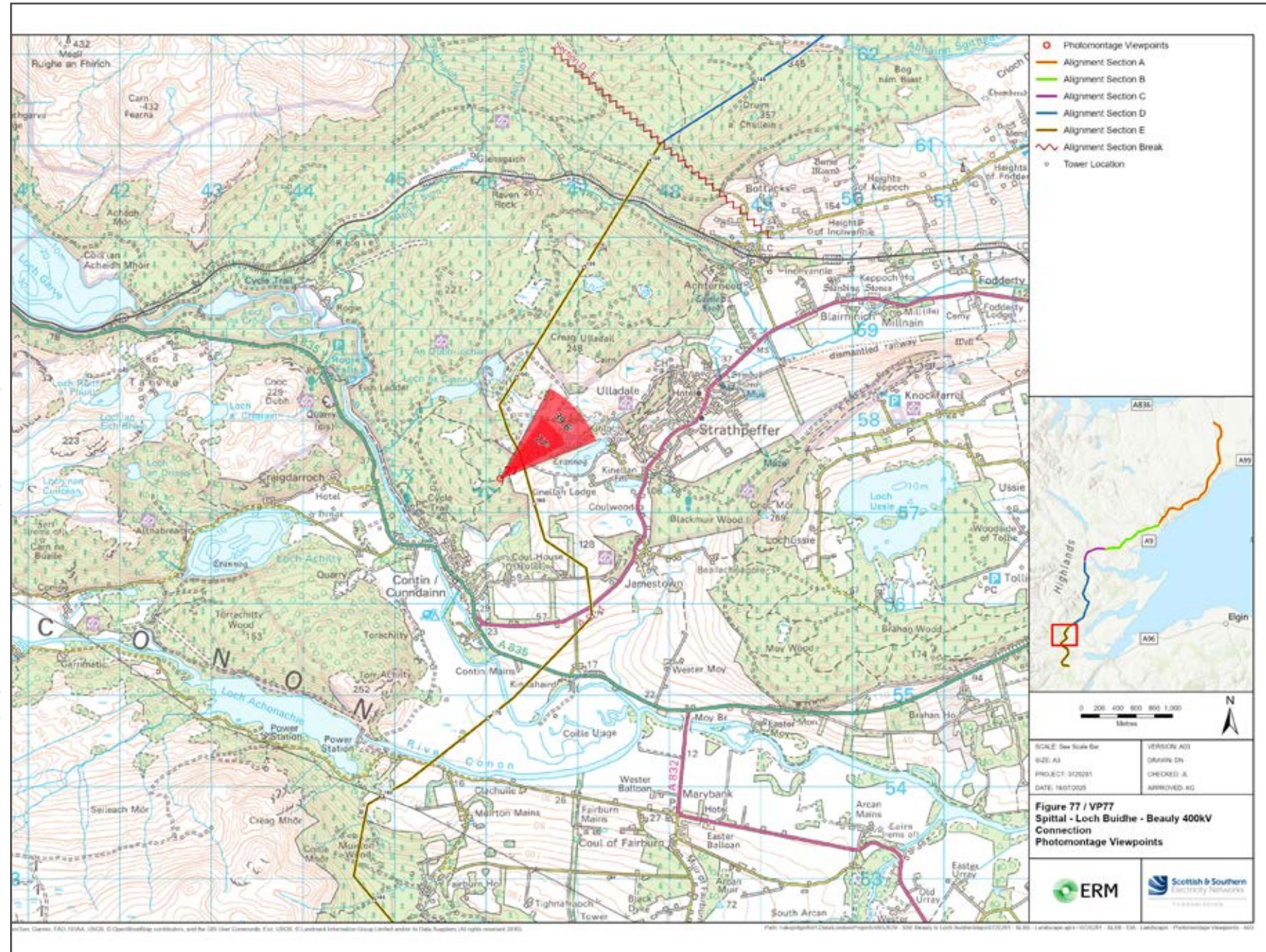


V4b Figure 7-77a Viewpoint 77: View Rock, Contin

Reproduced from Ordnance Survey digital map data © Crown copyright 2025. All rights reserved. Licence number AC00000808122



Grid Reference: 246153 857365

Distance to nearest development: 291m

AOD: 151m

The viewpoint location is to the Southwest of Stathpeffer.

Head South from Stathpeffer on the A834 towards the town of Contin.

Depart Contin North on a single-track road towards the viewpoint location.

The viewpoint location will need to be reached by foot.

Extent of 50mm single frame image



V4b Figure 7-77b
Viewpoint 77: View Rock, Contin
View Direction: 55°

Distance to nearest development: 291m Camera: Canon EOS R5 Focal Length: 50mm vertical (27°) x 28mm horizontal (65.5°) Camera height: 1.5m Date: 02/10/2024 18:20

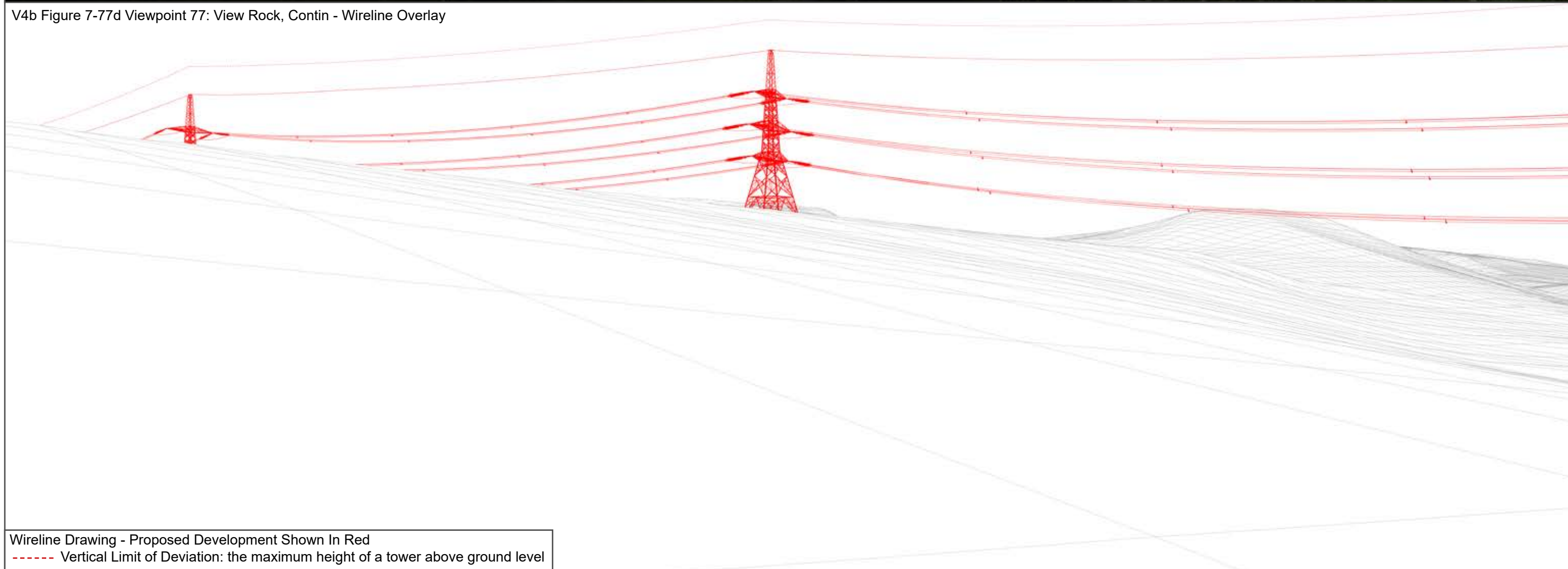
The images contained on this page and the following page are not representative of scale and distance from the actual viewpoint and show the wind farm development in its wider landscape context only.

For empirical testing, the wireline image on the next page can be accurately assessed in the field when converted to a transparency. If viewed with one eye at a distance of 300mm from exactly the same location and height as the original camera lens, the image will fit the real landscape cues.



V4b Figure 7-77c Viewpoint 77: View Rock, Contin - Existing View

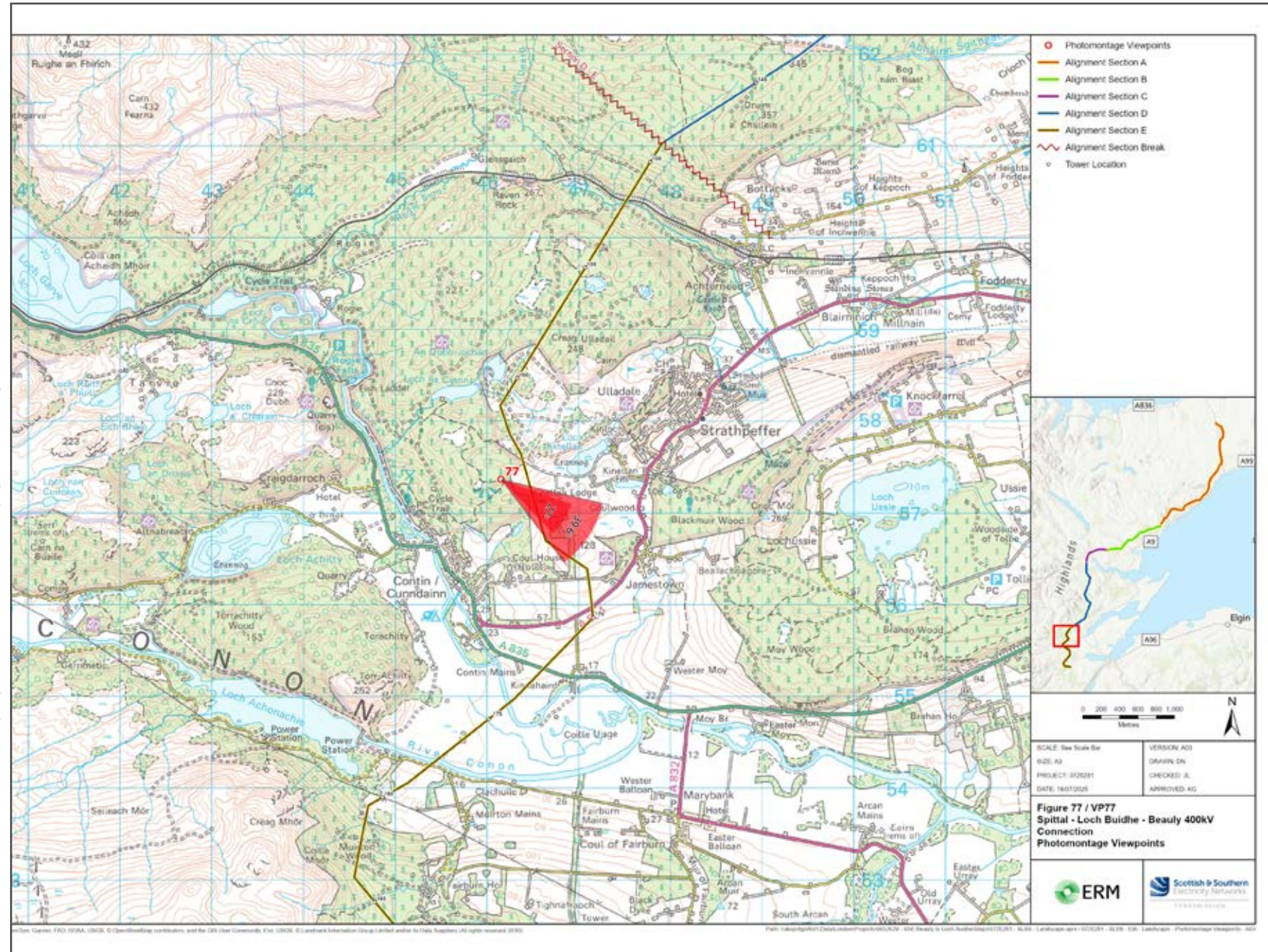
V4b Figure 7-77d Viewpoint 77: View Rock, Contin - Wireline Overlay



Wireline Drawing - Proposed Development Shown In Red
 ----- Vertical Limit of Deviation: the maximum height of a tower above ground level

V4b Figure 7-77a(i) Viewpoint 77: View Rock, Contin

Reproduced from Ordnance Survey digital map data © Crown copyright 2025. All rights reserved. Licence number AC00000808122



Grid Reference: 246153 857365 Distance to nearest development: 291m AOD: 151m

The viewpoint location is to the Southwest of Stathpeffer.
Head South from Stathpeffer on the A834 towards the town of Contin.
Depart Contin North on a single-track road towards the viewpoint location.
The viewpoint location will need to be reached by foot.

Extent of 50mm single frame image



V4b Figure 7-77b(i)
Viewpoint 77: View Rock, Contin
View Direction: 120.5°

Distance to nearest development: 291m Camera: Canon EOS R5 Focal Length: 50mm vertical (27°) x 28mm horizontal (65.5°) Camera height: 1.5m Date: 02/10/2024 18:20

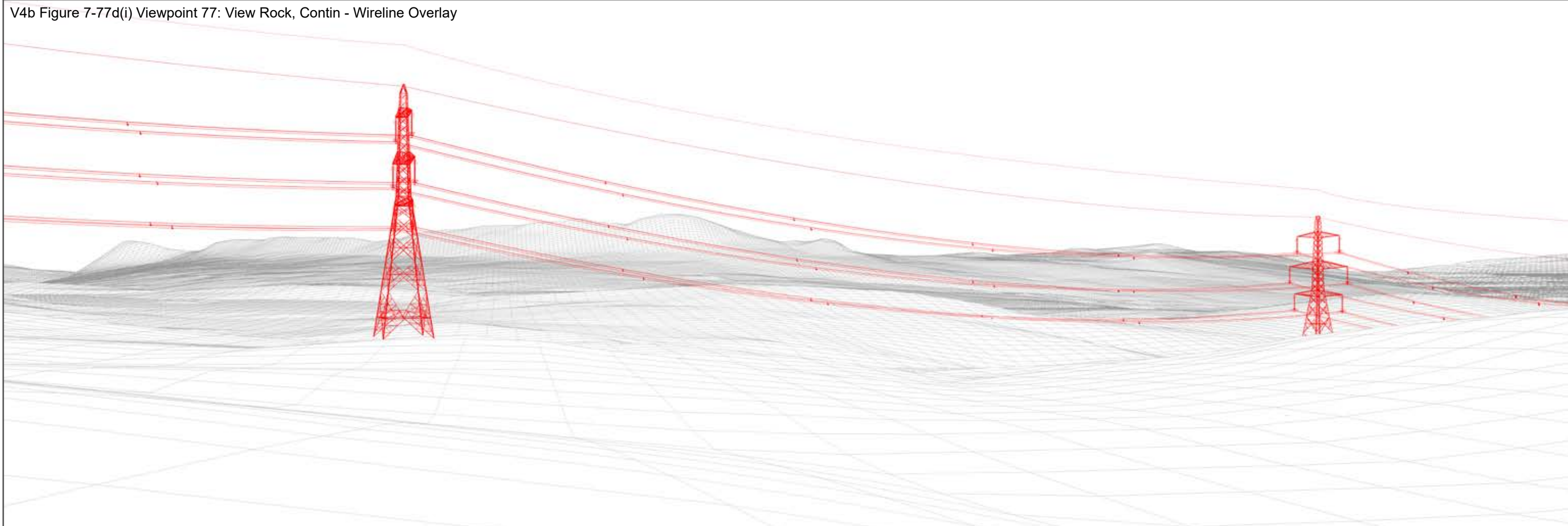
The images contained on this page and the following page are not representative of scale and distance from the actual viewpoint and show the wind farm development in its wider landscape context only.

For empirical testing, the wireline image on the next page can be accurately assessed in the field when converted to a transparency. If viewed with one eye at a distance of 300mm from exactly the same location and height as the original camera lens, the image will fit the real landscape cues.



V4b Figure 7-77c(i) Viewpoint 77: View Rock, Contin - Existing View

V4b Figure 7-77d(i) Viewpoint 77: View Rock, Contin - Wireline Overlay



Wireline Drawing - Proposed Development Shown In Red
----- Vertical Limit of Deviation: the maximum height of a tower above ground level



V4b Figure 7-77b(ii)
Viewpoint 77: View Rock, Contin

This image should be viewed at a comfortable arms length (approx. 500mm)

Distance to nearest development: 291m Camera: Canon EOS R5 Focal Length: 50mm Camera height: 1.5m Date: 02/10/2024 18:20



V4b Figure 7-77b(iii)
Viewpoint 77: View Rock, Contin

This image should be viewed at a comfortable arms length (approx. 500mm)

Distance to nearest development: 291m Camera: Canon EOS R5 Focal Length: 75mm Camera height: 1.5m Date: 02/10/2024 18:20