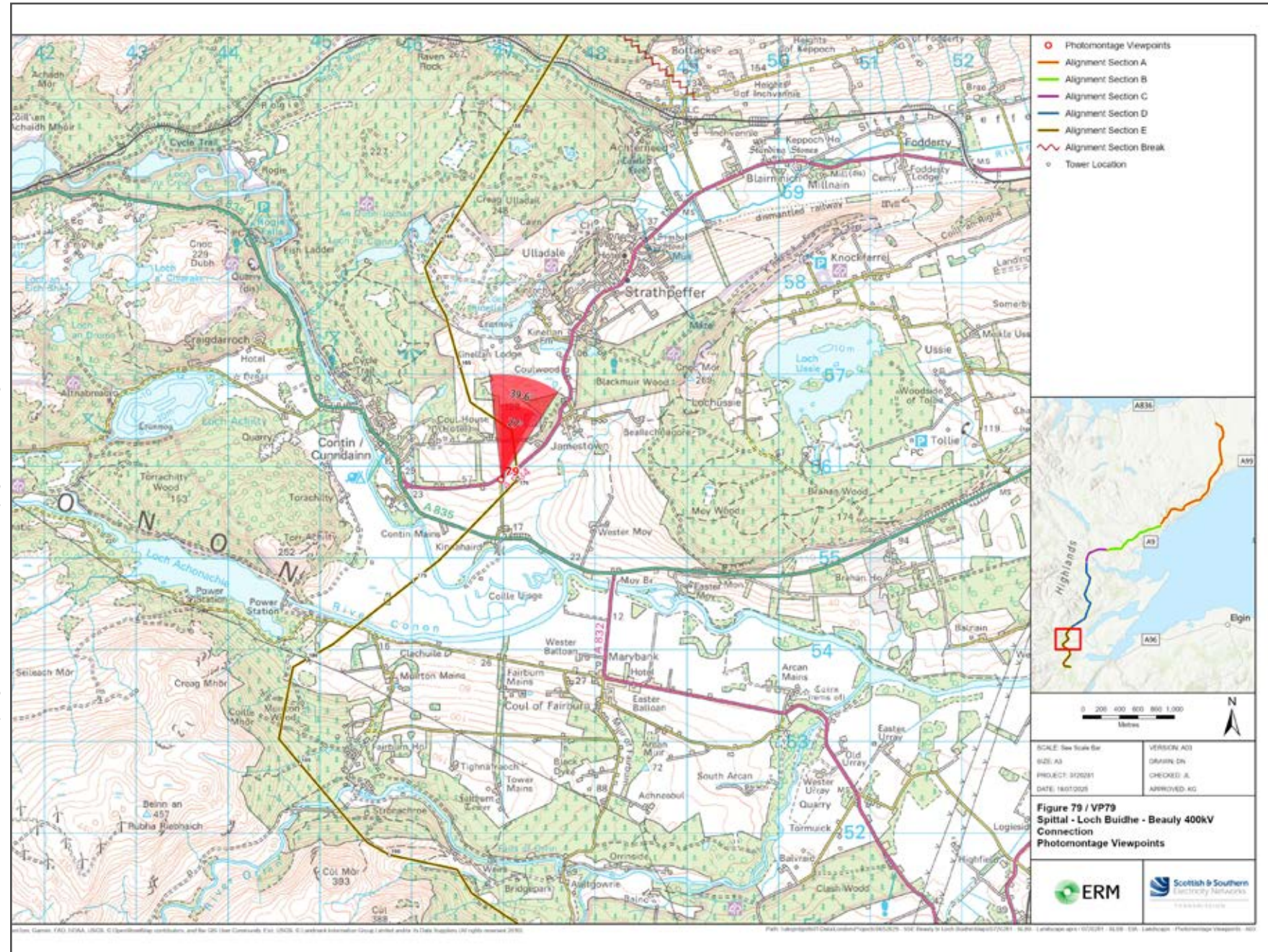


V4b Figure 7-79a Viewpoint 79: A834 (south west of Jamestown)

Reproduced from Ordnance Survey digital map data © Crown copyright 2025. All rights reserved. Licence number AC00000808122



Grid Reference: 246970 855859 Distance to nearest development: 190m AOD: 62m

The viewpoint location is South West of Jamestown off the A834.
Take the first exit on the right towards a private property, viewpoint is just off this road.
Nearest postcode is IV14 9EB.



Extent of 50mm single frame image



V4b Figure 7-79b
Viewpoint 79: A834 (south west of Jamestown)
View Direction: 12.5°

Distance to nearest development: 190m Camera: Canon EOS R5 Focal Length: 50mm vertical (27°) x 28mm horizontal (65.5°) Camera height: 1.5m Date: 06/11/2024 13:00

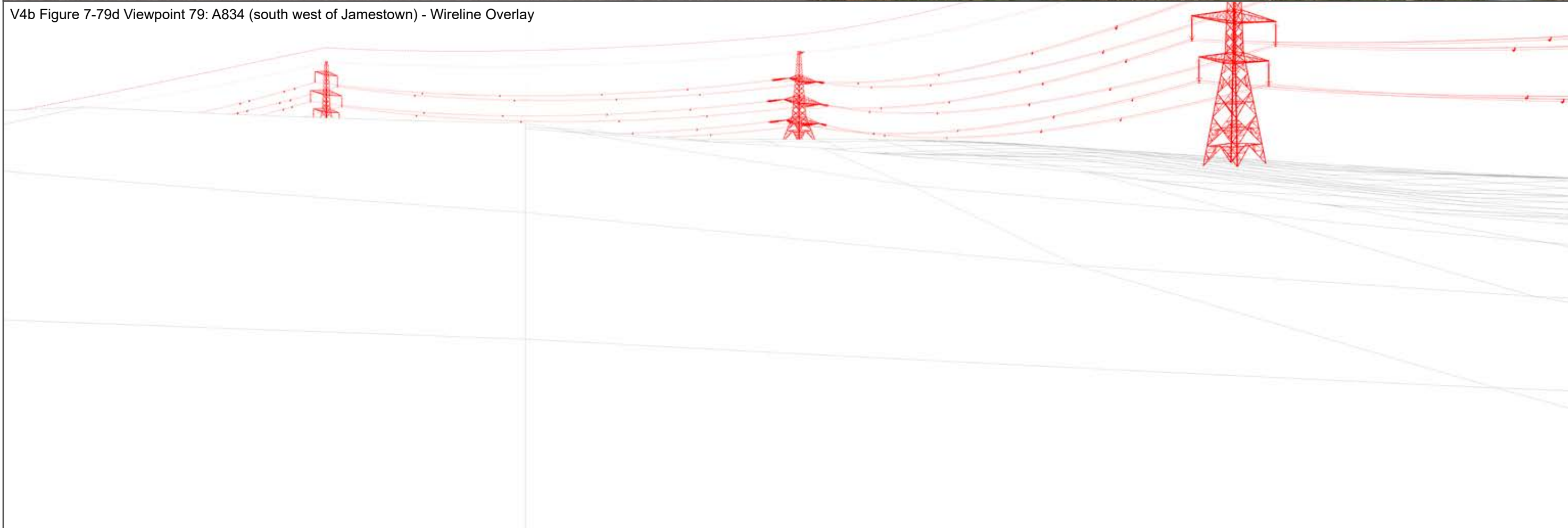
The images contained on this page and the following page are not representative of scale and distance from the actual viewpoint and show the wind farm development in its wider landscape context only.

For empirical testing, the wireline image on the next page can be accurately assessed in the field when converted to a transparency. If viewed with one eye at a distance of 300mm from exactly the same location and height as the original camera lens, the image will fit the real landscape cues.



V4b Figure 7-79c Viewpoint 79: A834 (south west of Jamestown) - Existing View

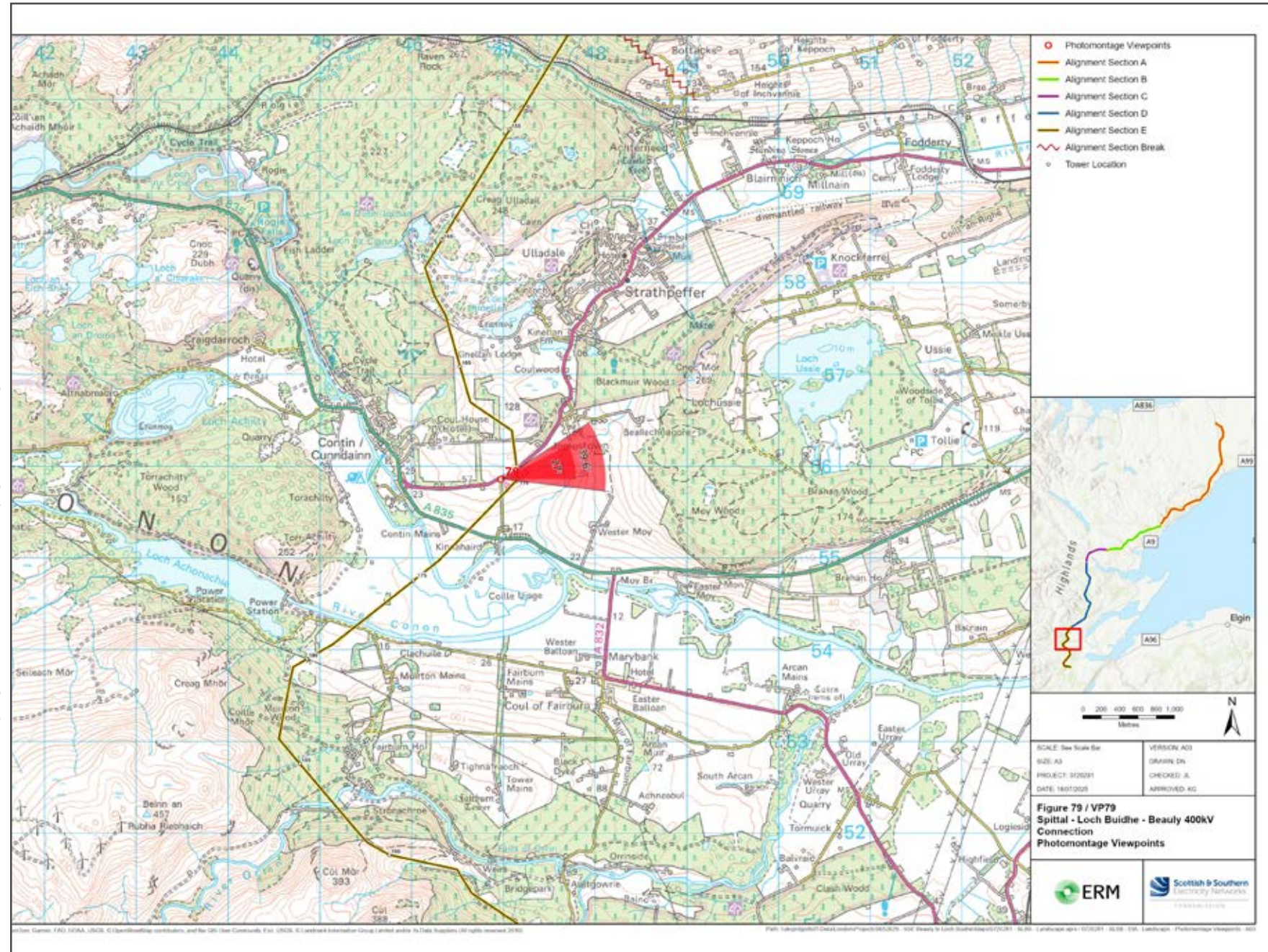
V4b Figure 7-79d Viewpoint 79: A834 (south west of Jamestown) - Wireline Overlay



Wireline Drawing - Proposed Development Shown In Red
 ----- Vertical Limit of Deviation: the maximum height of a tower above ground level

V4b Figure 7-79a(i) Viewpoint 79: A834 (south west of Jamestown)

Reproduced from Ordnance Survey digital map data © Crown copyright 2025. All rights reserved. Licence number AC00000808122



Grid Reference: 246970 855859 Distance to nearest development: 190m AOD: 62m

The viewpoint location is South West of Jamestown off the A834.
Take the first exit on the right towards a private a private property, viewpoint is just off this road.
Nearest postcode is IV14 9EB.





V4b Figure 7-79b(i)
Viewpoint 79: A834 (south west of Jamestown)
View Direction: 78°

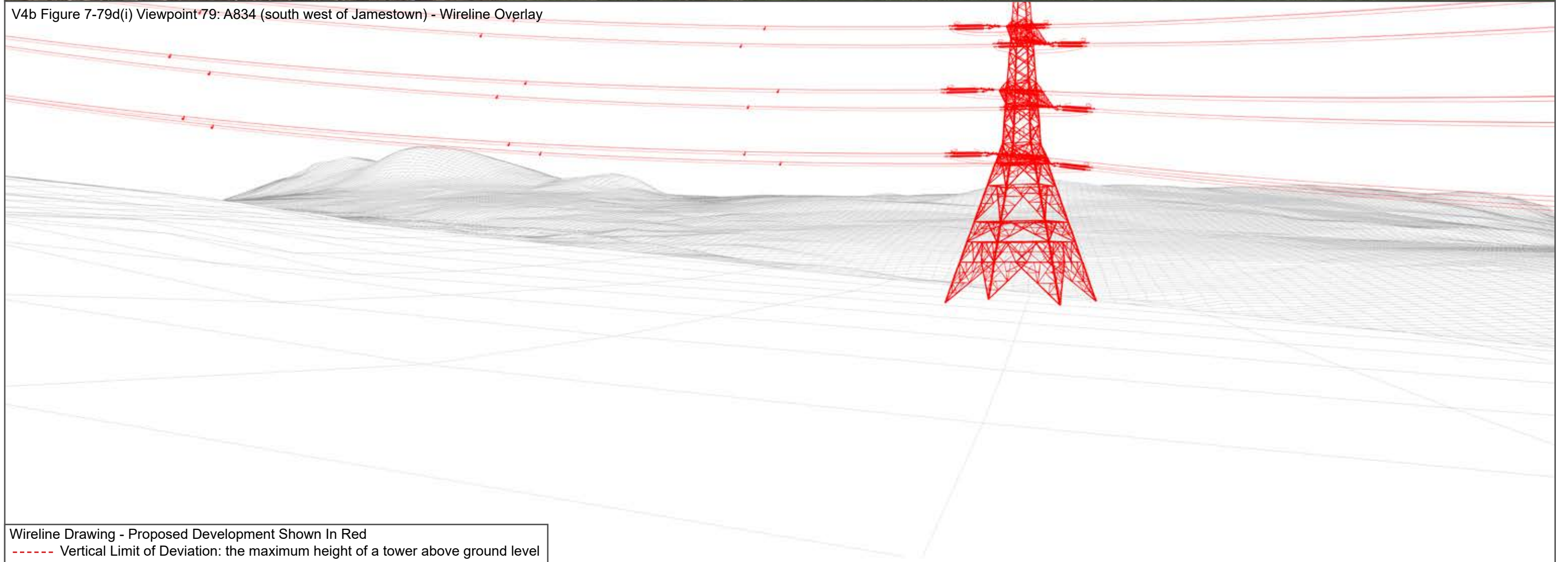
Distance to nearest development: 190m Camera: Canon EOS R5 Focal Length: 50mm vertical (27°) x 28mm horizontal (65.5°) Camera height: 1.5m Date: 06/11/2024 13:00

The images contained on this page and the following page are not representative of scale and distance from the actual viewpoint and show the wind farm development in its wider landscape context only.

For empirical testing, the wireline image on the next page can be accurately assessed in the field when converted to a transparency. If viewed with one eye at a distance of 300mm from exactly the same location and height as the original camera lens, the image will fit the real landscape cues.



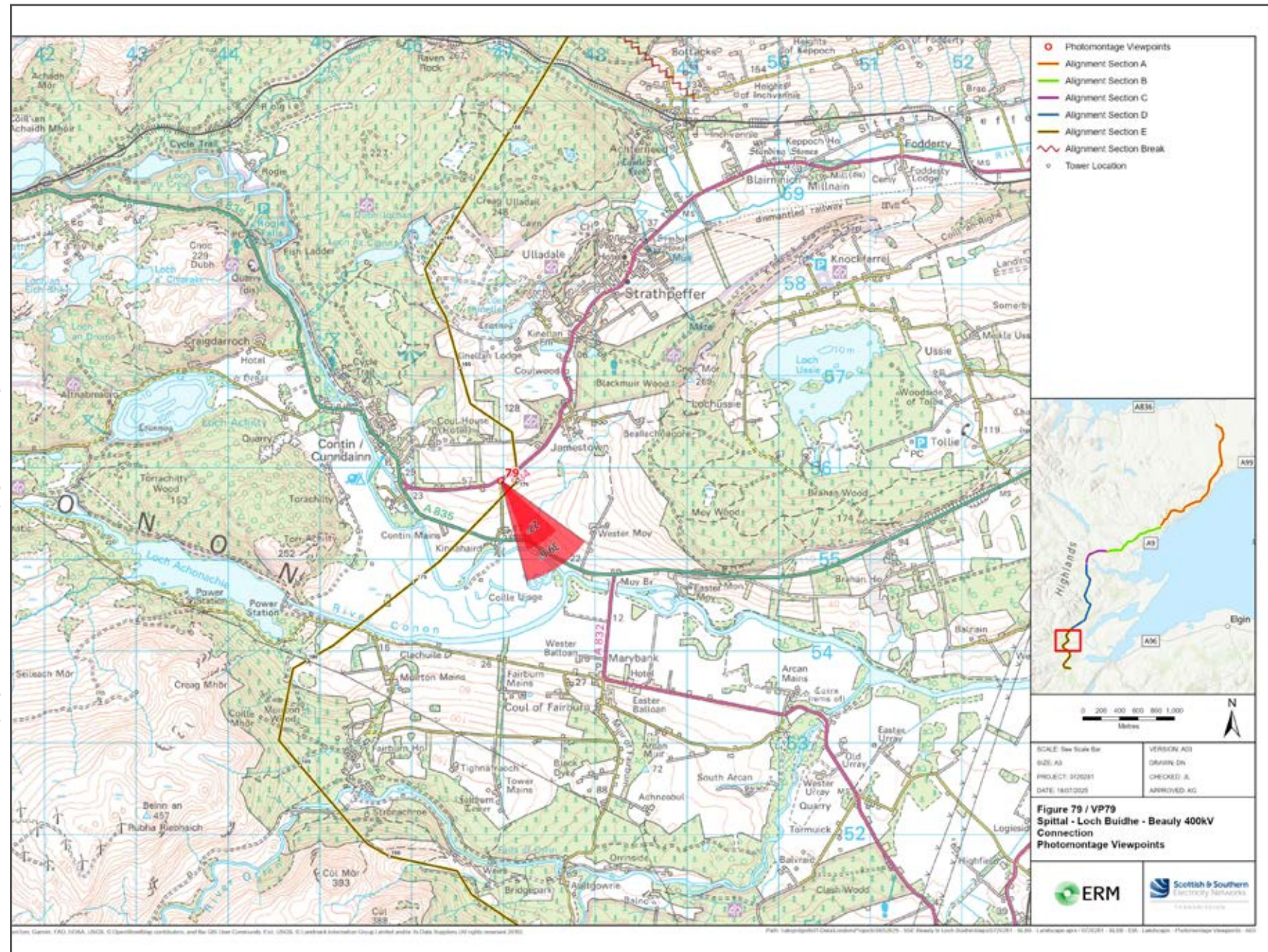
V4b Figure 7-79c(i) Viewpoint 79: A834 (south west of Jamestown) - Existing View



Wireline Drawing - Proposed Development Shown In Red
 ----- Vertical Limit of Deviation: the maximum height of a tower above ground level

V4b Figure 7-79a(ii) Viewpoint 79: A834 (south west of Jamestown)

Reproduced from Ordnance Survey digital map data © Crown copyright 2025. All rights reserved. Licence number AC00000808122



Grid Reference: 246970 855859 Distance to nearest development: 190m AOD: 62m

The viewpoint location is South West of Jamestown off the A834.
 Take the first exit on the right towards a private a private property, viewpoint is just off this road.
 Nearest postcode is IV14 9EB.



Extent of 50mm single frame image



V4b Figure 7-79b(ii)
Viewpoint 79: A834 (south west of Jamestown)
View Direction: 143.5°

Distance to nearest development: 190m Camera: Canon EOS R5 Focal Length: 50mm vertical (27°) x 28mm horizontal (65.5°) Camera height: 1.5m Date: 06/11/2024 13:00

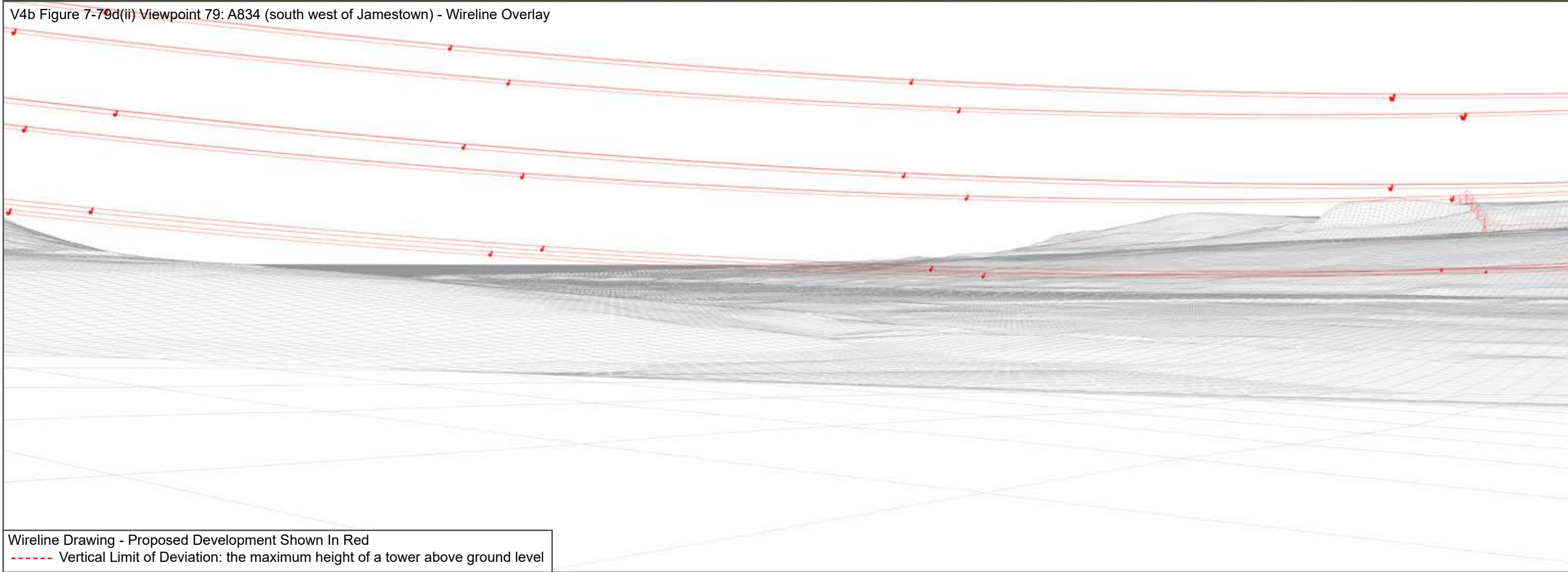
The images contained on this page and the following page are not representative of scale and distance from the actual viewpoint and show the wind farm development in its wider landscape context only.

For empirical testing, the wireline image on the next page can be accurately assessed in the field when converted to a transparency. If viewed with one eye at a distance of 300mm from exactly the same location and height as the original camera lens, the image will fit the real landscape cues.



V4b Figure 7-79c(ii) Viewpoint 79: A834 (south west of Jamestown) - Existing View

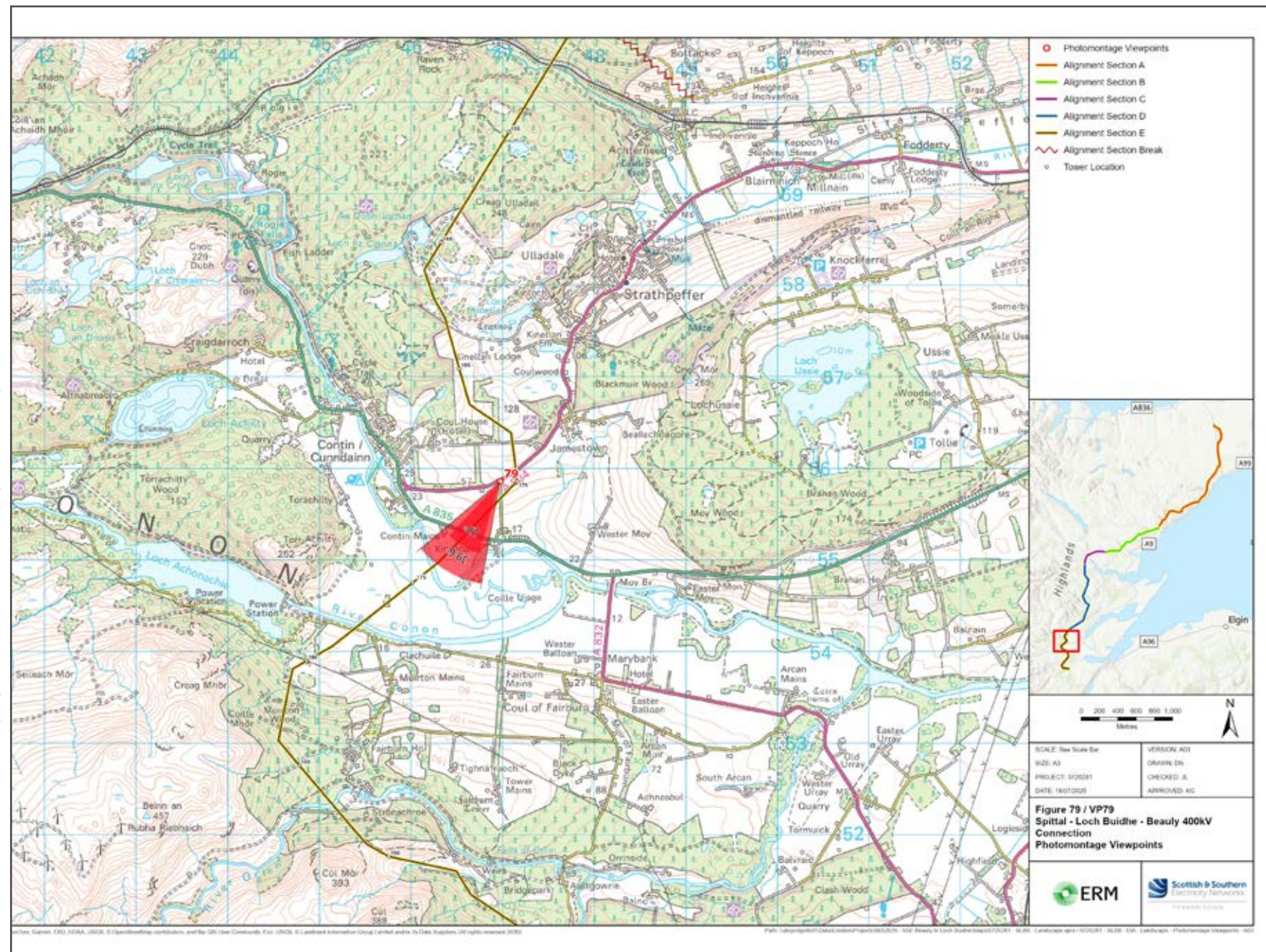
V4b Figure 7-79d(ii) Viewpoint 79: A834 (south west of Jamestown) - Wireline Overlay



Wireline Drawing - Proposed Development Shown In Red
 ----- Vertical Limit of Deviation: the maximum height of a tower above ground level

V4b Figure 7-79a(iii) Viewpoint 79: A834 (south west of Jamestown)

Reproduced from Ordnance Survey digital map data © Crown copyright 2025. All rights reserved. Licence number AC00000808122



Grid Reference: 246970 855859 Distance to nearest development: 190m AOD: 62m

The viewpoint location is South West of Jamestown off the A834.
 Take the first exit on the right towards a private a private property, viewpoint is just off this road.
 Nearest postcode is IV14 9EB.



Extent of 50mm single frame image



V4b Figure 7-79b(iii)
Viewpoint 79: A834 (south west of Jamestown)
View Direction: 209°

Distance to nearest development: 190m Camera: Canon EOS R5 Focal Length: 50mm vertical (27°) x 28mm horizontal (65.5°) Camera height: 1.5m Date: 06/11/2024 13:00

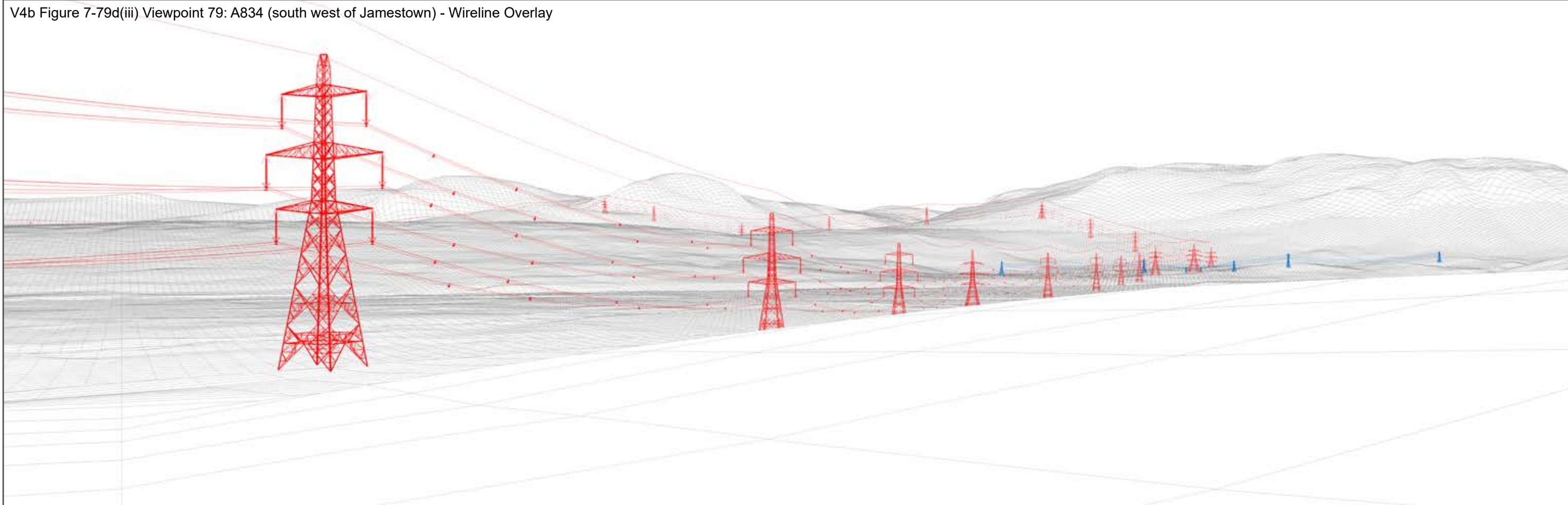
The images contained on this page and the following page are not representative of scale and distance from the actual viewpoint and show the wind farm development in its wider landscape context only.

For empirical testing, the wireline image on the next page can be accurately assessed in the field when converted to a transparency. If viewed with one eye at a distance of 300mm from exactly the same location and height as the original camera lens, the image will fit the real landscape cues.



V4b Figure 7-79c(iii) Viewpoint 79: A834 (south west of Jamestown) - Existing View

V4b Figure 7-79d(iii) Viewpoint 79: A834 (south west of Jamestown) - Wireline Overlay



Wireline Drawing - Proposed Development Shown In Red
 Proposed Development Special Arrangements - Permanent diversion works required to existing 132 kV and 275 kV lines to enable the construction of the Proposed Development are shown in blue
 ----- Vertical Limit of Deviation: the maximum height of a tower above ground level



V4b Figure 7-79b(iv)

Viewpoint 79: A834 (south west of Jamestown)

This image should be viewed at a comfortable arms length (approx. 500mm)

Distance to nearest development: 190m Camera: Canon EOS R5 Focal Length: 50mm Camera height: 1.5m Date: 06/11/2024 13:00



V4b Figure 7-79b(v)

Viewpoint 79: A834 (south west of Jamestown)

This image should be viewed at a comfortable arms length (approx. 500mm)

Distance to nearest development: 190m Camera: Canon EOS R5 Focal Length: 75mm Camera height: 1.5m Date: 06/11/2024 13:00