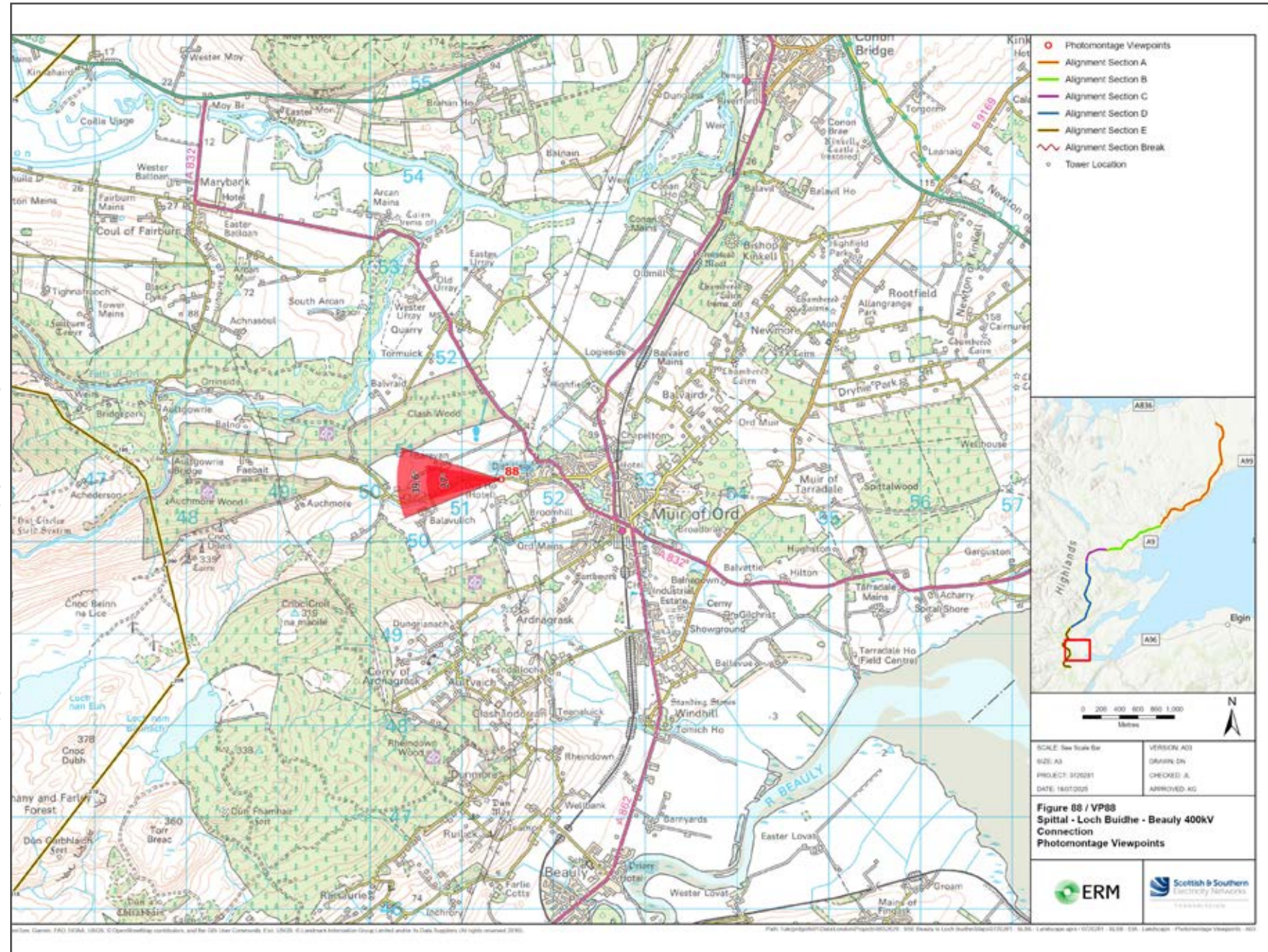


V4b Figure 7-88a Viewpoint 88: Muir of Ord

Reproduced from Ordnance Survey digital map data © Crown copyright 2025. All rights reserved. Licence number AC00000808122



Grid Reference: 251427 850680 Distance to nearest development: 3766m AOD: 48m

The viewpoint location is west out of Muir of Ord.
 If coming from Muir of Ord, take a left off West Road and follow the road west towards the viewpoint.





V4b Figure 7-88b
Viewpoint 88: Muir of Ord
View Direction: 265°

Distance to nearest development: 3766m Camera: Canon EOS R5 Focal Length: 50mm vertical (27°) x 28mm horizontal (65.5°) Camera height: 1.5m Date: 11/11/2024 10:45

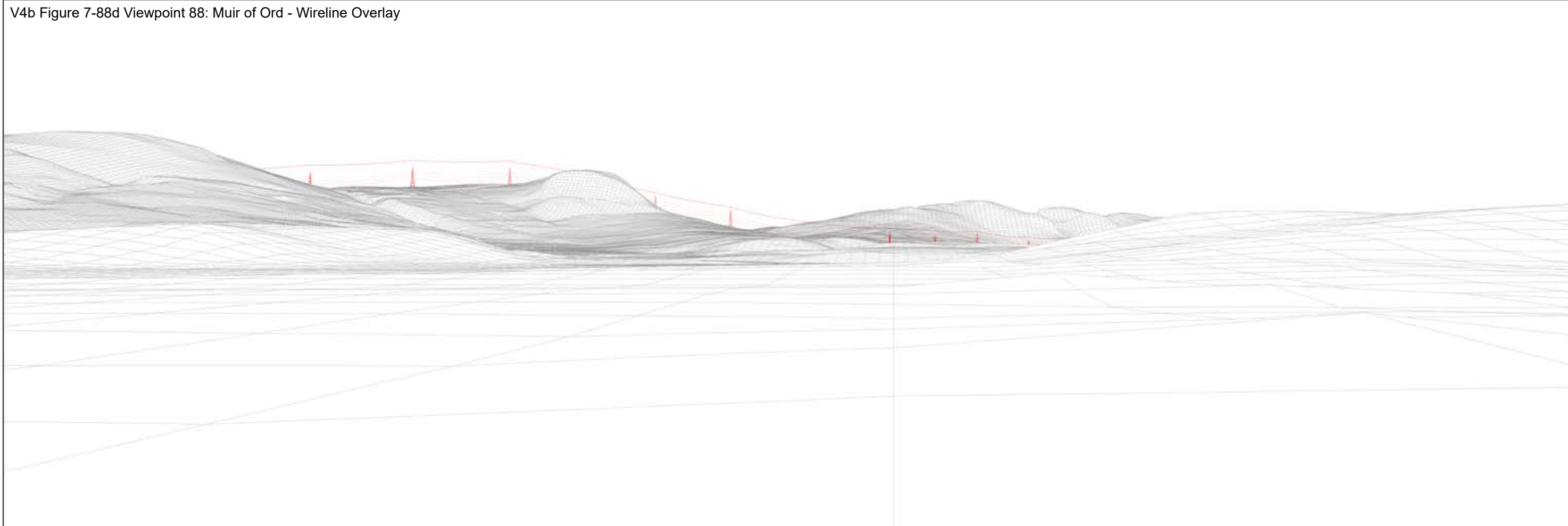
The images contained on this page and the following page are not representative of scale and distance from the actual viewpoint and show the wind farm development in its wider landscape context only.

For empirical testing, the wireline image on the next page can be accurately assessed in the field when converted to a transparency. If viewed with one eye at a distance of 300mm from exactly the same location and height as the original camera lens, the image will fit the real landscape cues.



V4b Figure 7-88c Viewpoint 88: Muir of Ord - Existing View

V4b Figure 7-88d Viewpoint 88: Muir of Ord - Wireline Overlay



Wireline Drawing - Proposed Development Shown In Red
 ----- Vertical Limit of Deviation: the maximum height of a tower above ground level



V4b Figure 7-88b(i)
Viewpoint 88: Muir of Ord

This image should be viewed at a comfortable arms length (approx. 500mm)

Distance to nearest development: 3766m Camera: Canon EOS R5 Focal Length: 50mm Camera height: 1.5m Date: 11/11/2024 10:45



V4b Figure 7-88b(ii)
Viewpoint 88: Muir of Ord

This image should be viewed at a comfortable arms length (approx. 500mm)

Distance to nearest development: 3766m Camera: Canon EOS R5 Focal Length: 75mm Camera height: 1.5m Date: 11/11/2024 10:45