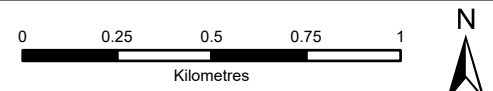


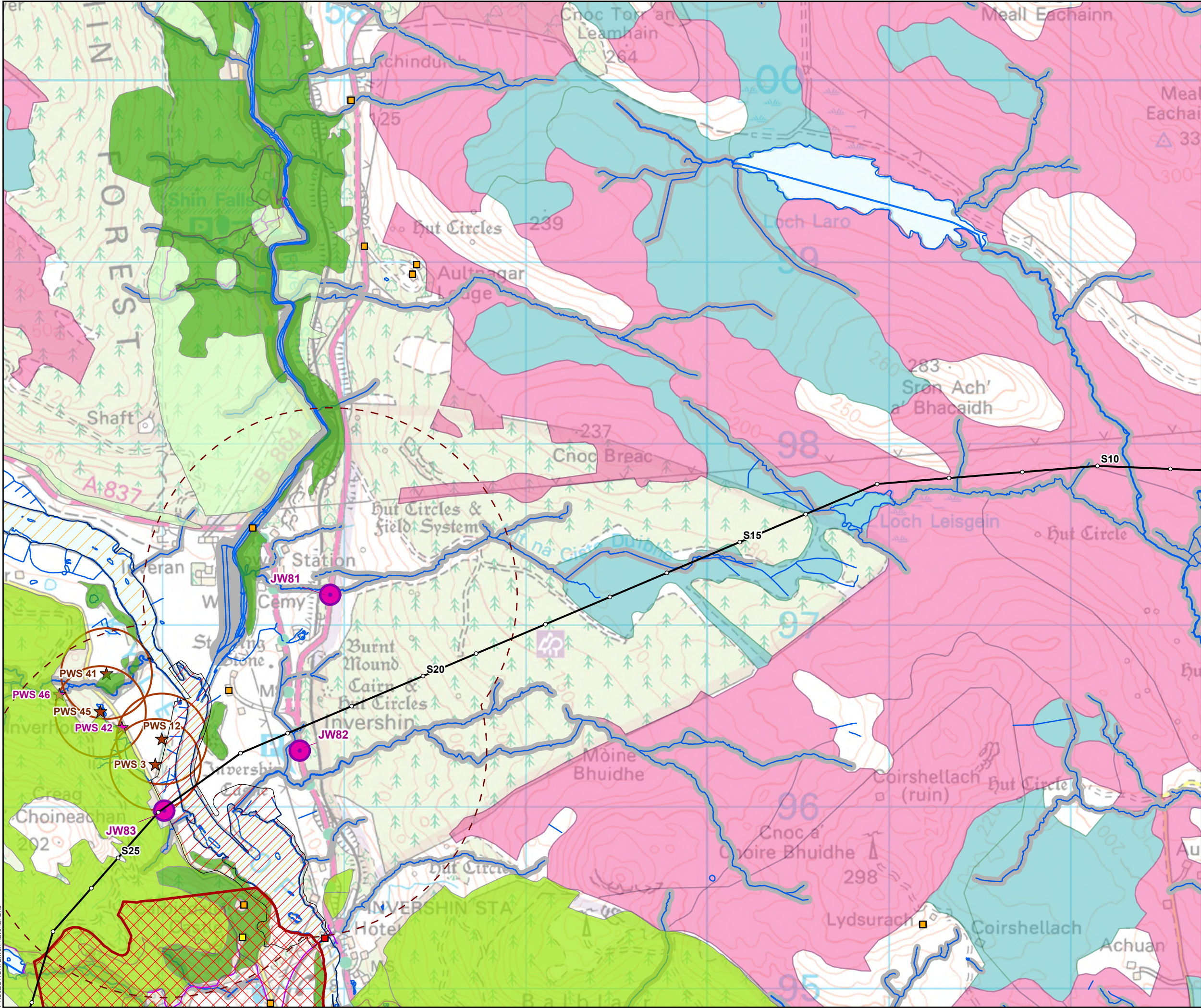
- Tower Location
- Overhead Alignment
- Widening Junctions
- Passing Places
- - - 1km Buffer
- ▨ Site Of Special Scientific Interest (SSSI)
- ▨ Special Protection Area (SPA)
- ▨ Special Area Of Conservation (SAC)
- ▨ RSPB Important Birds Area
- Core Paths
- ★ Groundwater PWS
- ★ Surface Water PWS
- Groundwater PWS Buffer (250 m)
- Surface Watercourse (OS MasterMap)
- WFD Watercourses (SEPA)
- Recommended Riparian Corridor (SEPA)
- Carbon and Peatland Class
 - 1
 - 2



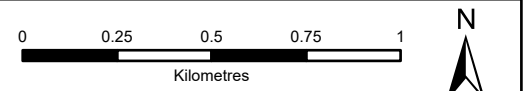
SCALE: See Scale Bar	VERSION: A01
SIZE: A3	DRAWN: CI
PROJECT: 0652629	CHECKED: SL
DATE: 7/17/2025	APPROVED: KG

Page 18
Passing Places and Junction Widening



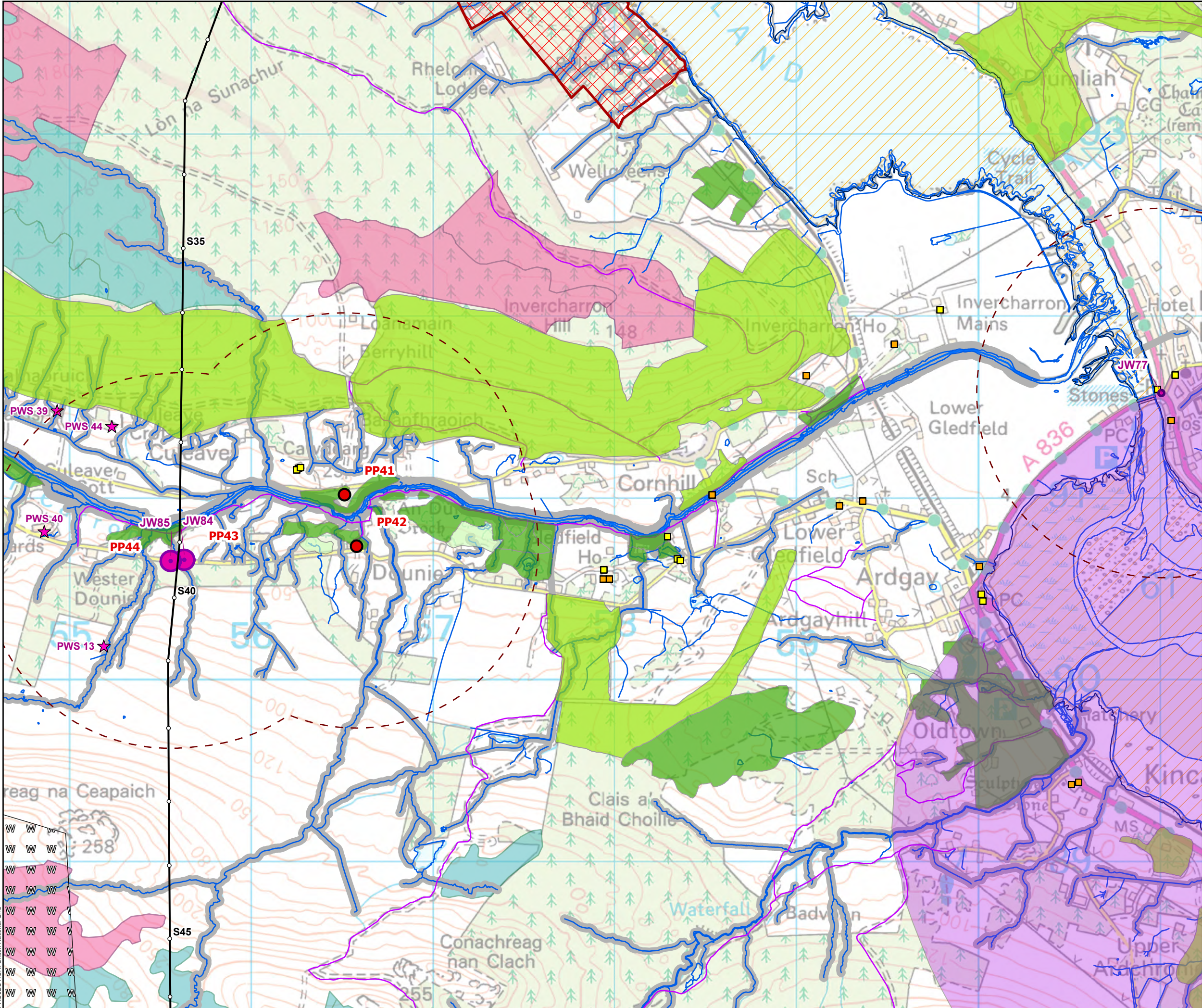


- Tower Location
- Overhead Alignment
- Widening Junctions
- Passing Places
- - - 1km Buffer
- Listed Buildings
 - Category A
 - Category B
 - Category C
- ⊠ Battlefields
- ▨ Site Of Special Scientific Interest (SSSI)
- ▨ Special Area Of Conservation (SAC)
- Ancient Woodland Inventory (AWI)
 - Ancient (of semi-natural origin)
 - Long-Established (of plantation origin)
 - Other (on Roy map)
- Core Paths
- ★ Groundwater PWS
- ★ Surface Water PWS
- Groundwater PWS Buffer (250 m)
- Surface Watercourse (OS MasterMap)
- WFD Watercourses (SEPA)
- Recommended Riparian Corridor (SEPA)
- Carbon and Peatland Class
 - 1
 - 2

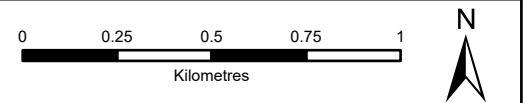


SCALE: See Scale Bar	VERSION: A01
SIZE: A3	DRAWN: CI
PROJECT: 0652629	CHECKED: SL
DATE: 7/17/2025	APPROVED: KG



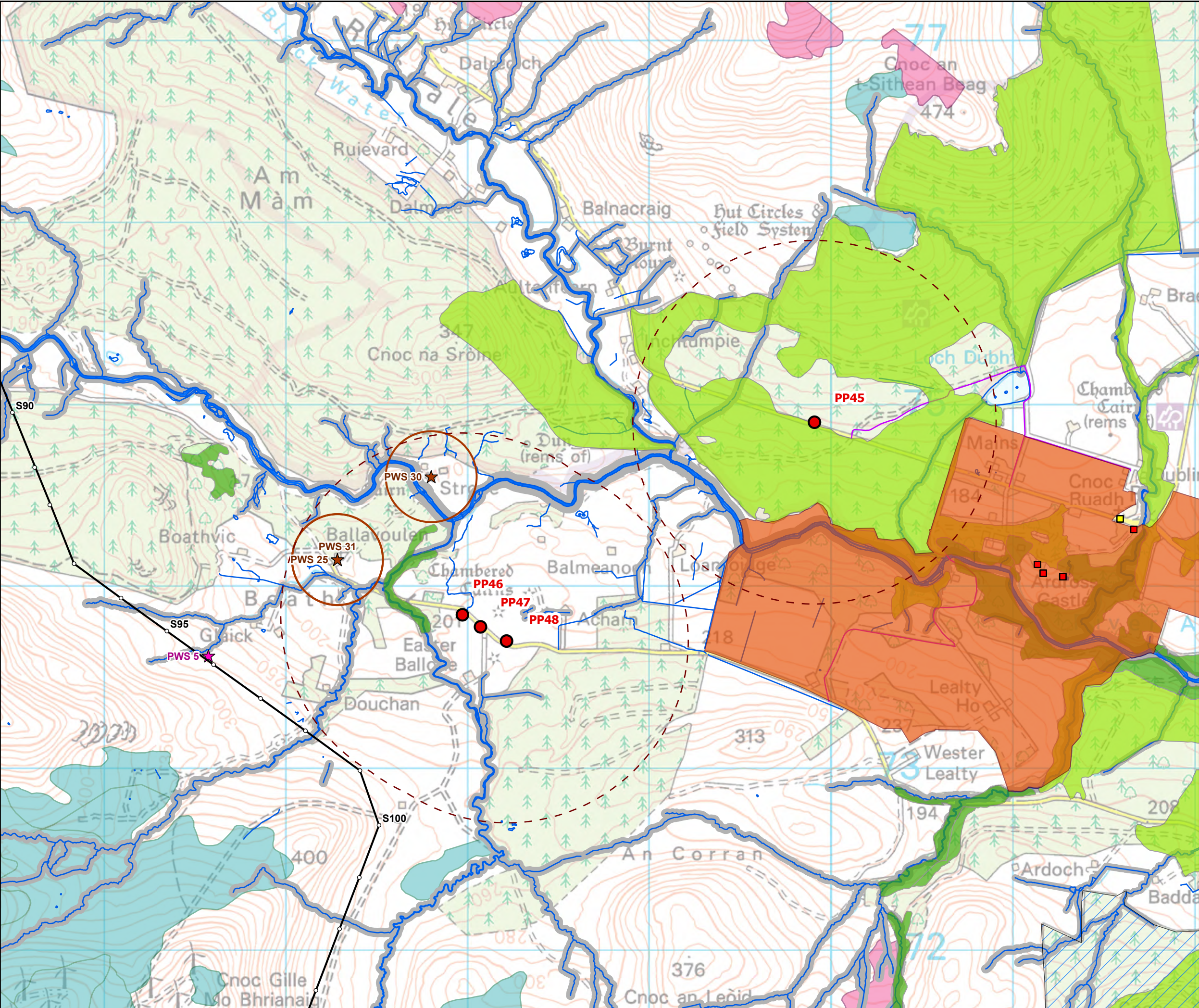


- Tower Location
- Overhead Alignment
- Widening Junctions
- Passing Places
- - - 1km Buffer
- Listed Buildings
 - Category B
 - Category C
- ▤ Battlefields
- National Scenic Area
- ▨ Special Area Of Conservation (SAC)
- Ancient Woodland Inventory (AWI)
 - Ancient (of semi-natural origin)
 - Long-Established (of plantation origin)
 - Other (on Roy map)
- Core Paths
- Wild Land
- ★ Surface Water PWS
- Surface Watercourse (OS MasterMap)
- WFD Watercourses (SEPA)
- Recommended Riparian Corridor (SEPA)
- Carbon and Peatland Class
 - 1
 - 2

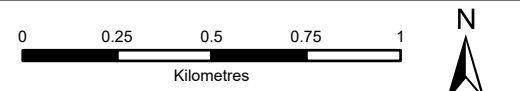


SCALE: See Scale Bar	VERSION: A01
SIZE: A3	DRAWN: CI
PROJECT: 0652629	CHECKED: SL
DATE: 7/17/2025	APPROVED: KG



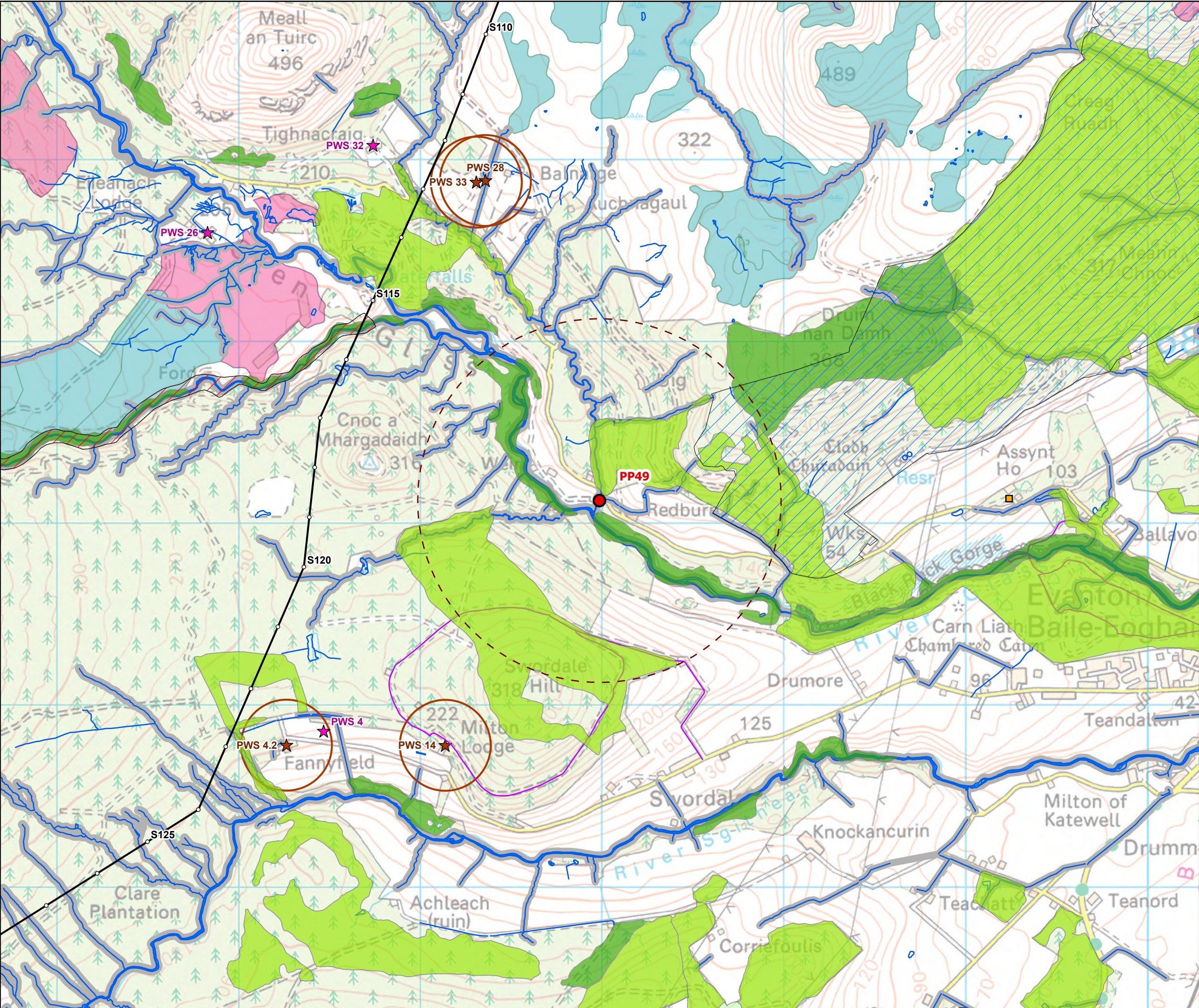


- Tower Location
- Overhead Alignment
- Widening Junctions
- Passing Places
- - - 1km Buffer
- Listed Buildings
 - Category A
 - Category C
- Special Protection Area (SPA)
- Garden and Designated Landscapes
- Ancient Woodland Inventory (AWI)
 - Ancient (of semi-natural origin)
 - Long-Established (of plantation origin)
 - Other (on Roy map)
- Core Paths
- ★ Groundwater PWS
- ★ Surface Water PWS
- Groundwater PWS Buffer (250 m)
- Surface Watercourse (OS MasterMap)
- WFD Watercourses (SEPA)
- Recommended Riparian Corridor (SEPA)
- Carbon and Peatland Class
 - 1
 - 2

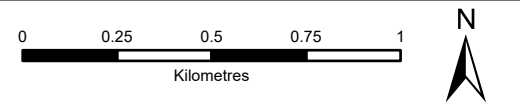


SCALE: See Scale Bar	VERSION: A01
SIZE: A3	DRAWN: CI
PROJECT: 0652629	CHECKED: SL
DATE: 7/17/2025	APPROVED: KG



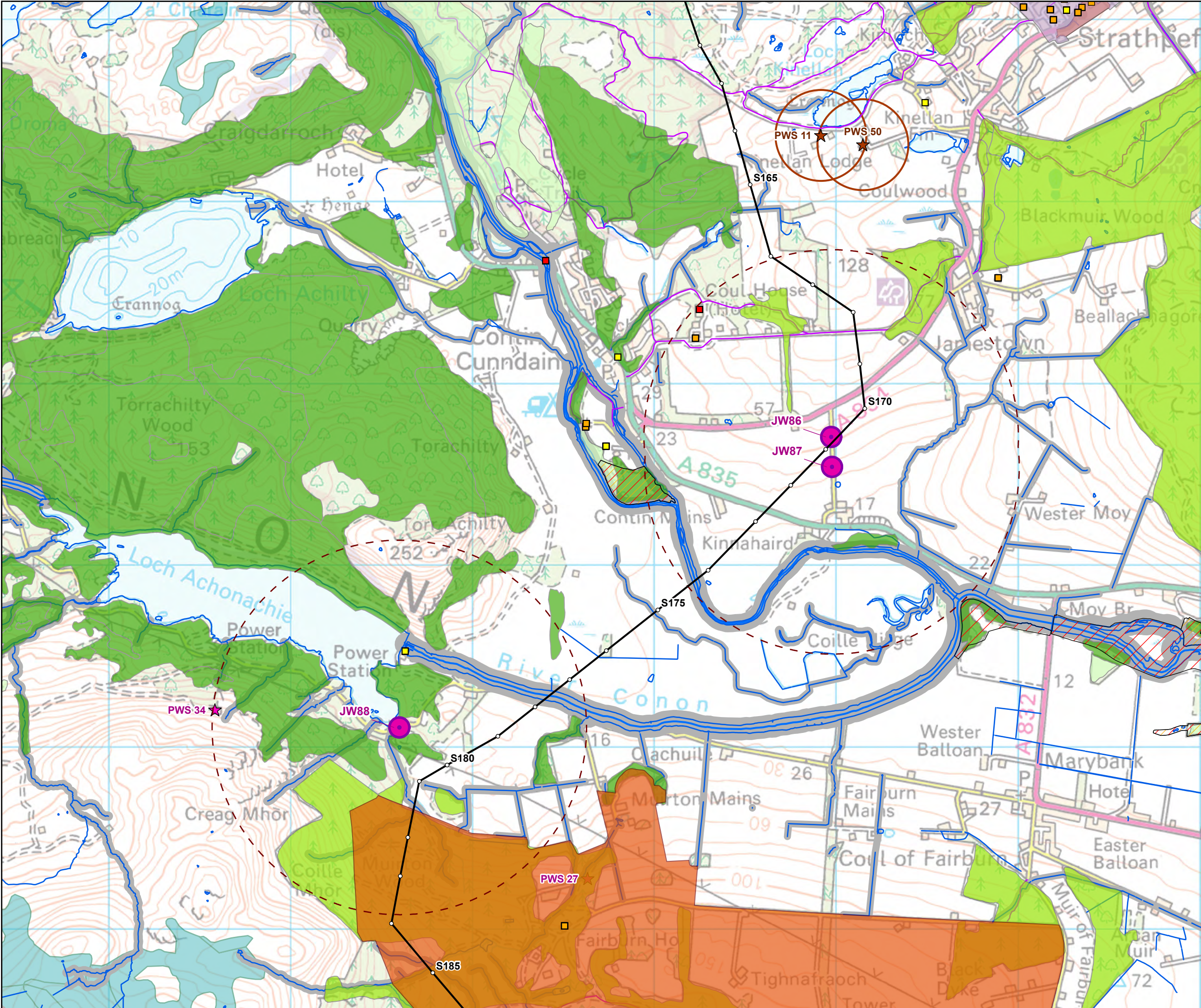


- Tower Location
- Overhead Alignment
- Widening Junctions
- Passing Places
- - - 1km Buffer
- Listed Buildings
 - Category B
 - Category C
- ▨ Site Of Special Scientific Interest (SSSI)
- ▨ Special Protection Area (SPA)
- Ancient Woodland Inventory (AWI)
 - Ancient (of semi-natural origin)
 - Long-Established (of plantation origin)
 - Other (on Roy map)
- Core Paths
- ★ Groundwater PWS
- ★ Surface Water PWS
- Groundwater PWS Buffer (250 m)
- Surface Watercourse (OS MasterMap)
- WFD Watercourses (SEPA)
- ▨ Recommended Riparian Corridor (SEPA)
- Carbon and Peatland Class
 - 1
 - 2

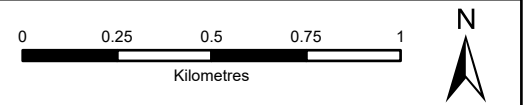


SCALE: See Scale Bar	VERSION: A01
SIZE: A3	DRAWN: CI
PROJECT: 0652629	CHECKED: SL
DATE: 7/17/2025	APPROVED: KG



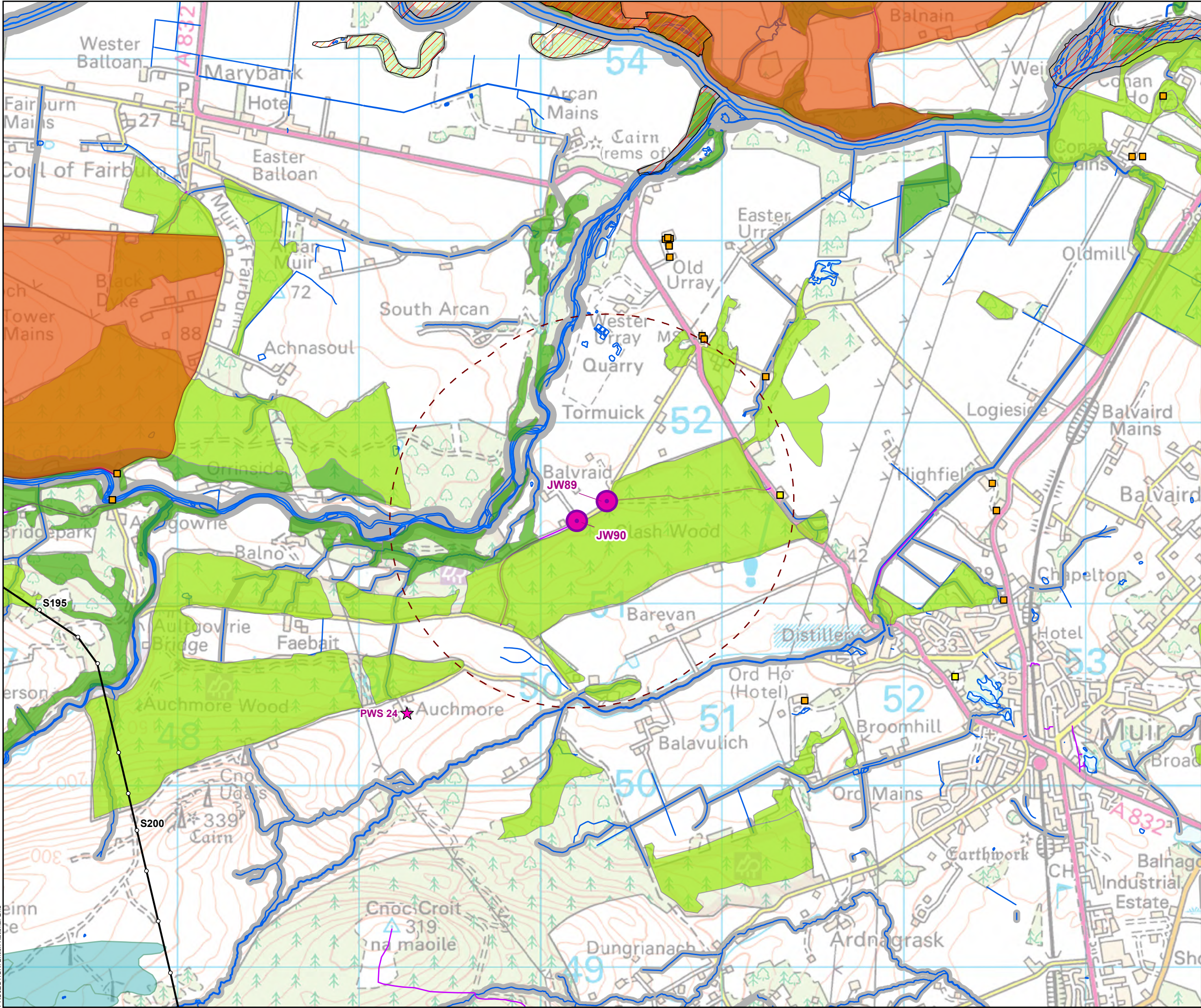


- Tower Location
- Overhead Alignment
- Widening Junctions
- Passing Places
- - - 1km Buffer
- Listed Buildings
 - Category A
 - Category B
 - Category C
- ▨ Site Of Special Scientific Interest (SSSI)
- ▨ Special Area Of Conservation (SAC)
- Conservation Areas
- Garden and Designated Landscapes
- Ancient Woodland Inventory (AWI)
 - Ancient (of semi-natural origin)
 - Long-Established (of plantation origin)
 - Other (on Roy map)
- Core Paths
- ★ Groundwater PWS
- ★ Surface Water PWS
- Groundwater PWS Buffer (250 m)
- Surface Watercourse (OS MasterMap)
- WFD Watercourses (SEPA)
- Recommended Riparian Corridor (SEPA)
- Carbon and Peatland Class
 - 1

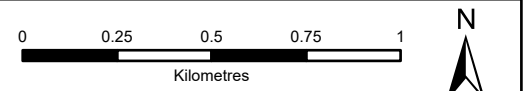


SCALE: See Scale Bar	VERSION: A01
SIZE: A3	DRAWN: CI
PROJECT: 0652629	CHECKED: SL
DATE: 7/17/2025	APPROVED: KG



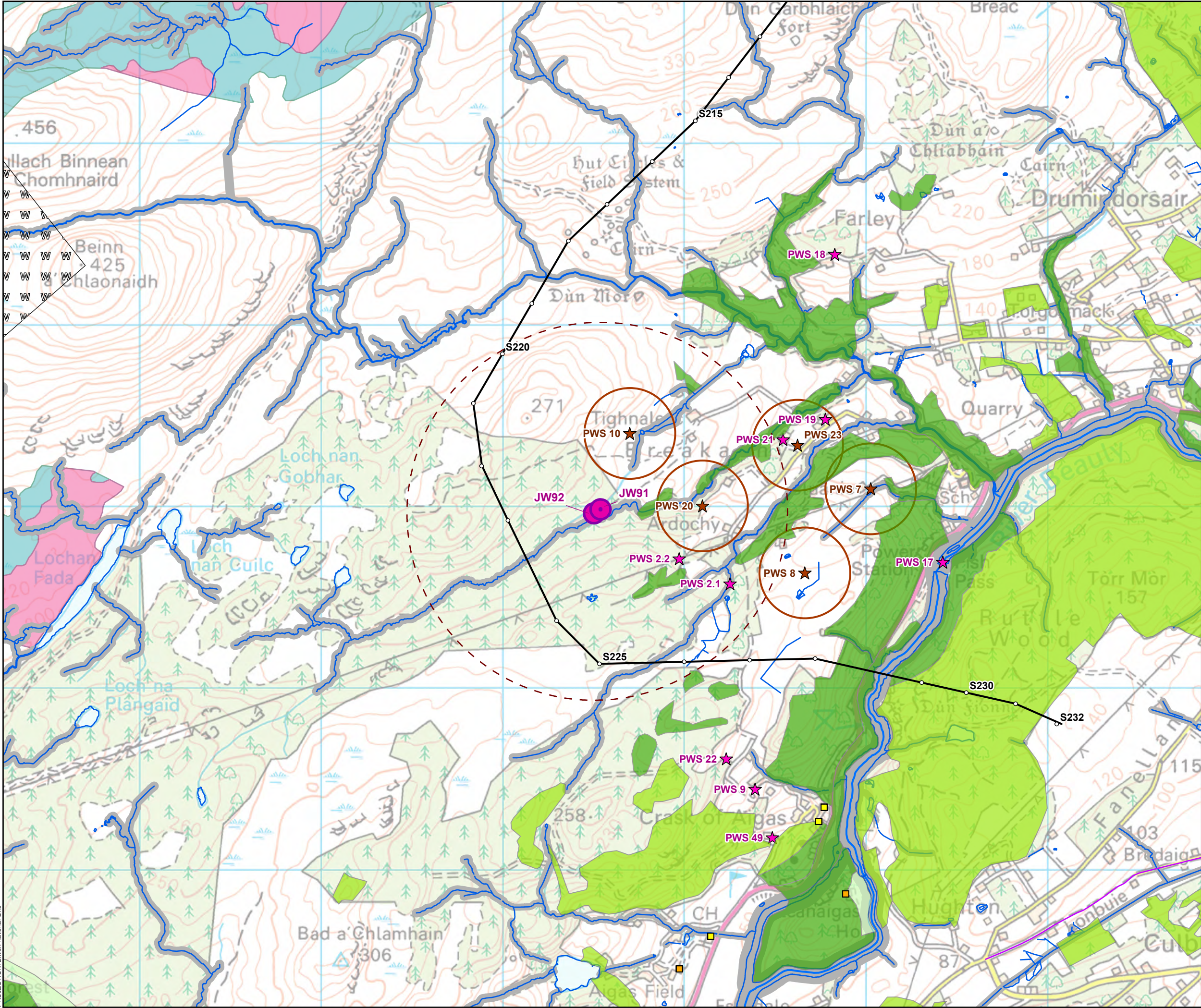


- Tower Location
- Overhead Alignment
- Widening Junctions
- Passing Places
- - - 1km Buffer
- Listed Buildings
 - Category B
 - Category C
- ▨ Site Of Special Scientific Interest (SSSI)
- ▨ Special Area Of Conservation (SAC)
- Garden and Designated Landscapes
- Ancient Woodland Inventory (AWI)
 - Ancient (of semi-natural origin)
 - Long-Established (of plantation origin)
 - Other (on Roy map)
- Core Paths
- ★ Surface Water PWS
- Surface Watercourse (OS MasterMap)
- WFD Watercourses (SEPA)
- Recommended Riparian Corridor (SEPA)
- Carbon and Peatland Class
 - 1

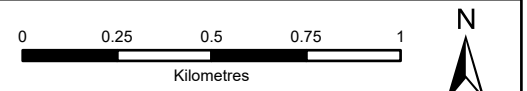


SCALE: See Scale Bar	VERSION: A01
SIZE: A3	DRAWN: CI
PROJECT: 0652629	CHECKED: SL
DATE: 7/17/2025	APPROVED: KG





- Tower Location
- Overhead Alignment
- Widening Junctions
- Passing Places
- - - 1km Buffer
- Listed Buildings
 - Category B
 - Category C
- Ancient Woodland Inventory (AWI)
 - Ancient (of semi-natural origin)
 - Long-Established (of plantation origin)
 - Other (on Roy map)
- Core Paths
- Wild Land
- ★ Groundwater PWS
- ★ Surface Water PWS
- Groundwater PWS Buffer (250 m)
- Surface Watercourse (OS MasterMap)
- WFD Watercourses (SEPA)
- Recommended Riparian Corridor (SEPA)
- Carbon and Peatland Class
 - 1
 - 2



SCALE: See Scale Bar	VERSION: A01
SIZE: A3	DRAWN: CI
PROJECT: 0652629	CHECKED: SL
DATE: 7/17/2025	APPROVED: KG