

Tower Location

Overhead Alignment

Existing access tracks - Some upgrade may be required

Core Paths

Wild Land

Surface Water PWS

Carbon and Peatland Class

1

2

1km Buffer

Listed Buildings

Category B

Category C

National Scenic Area

Special Area Of Conservation (SAC)

Ancient Woodland Inventory (AWI)

Ancient (of semi-natural origin)

Long-Established (of plantation origin)

Other (on Roy map)

Surface Water (OSMasterMap)

WFD Watercourses (SEPA)

Recommended Riparian Corridor (SEPA)

0

250

500

750

1,000

Metres

N

SCALE: See Scale Bar

VERSION: A01

SIZE: A3

DRAWN: CI

PROJECT: 0652629

CHECKED: SL

DATE: 7/15/2025

APPROVED: KG

Access Tracks: PRI156

ERM

Scottish & Southern

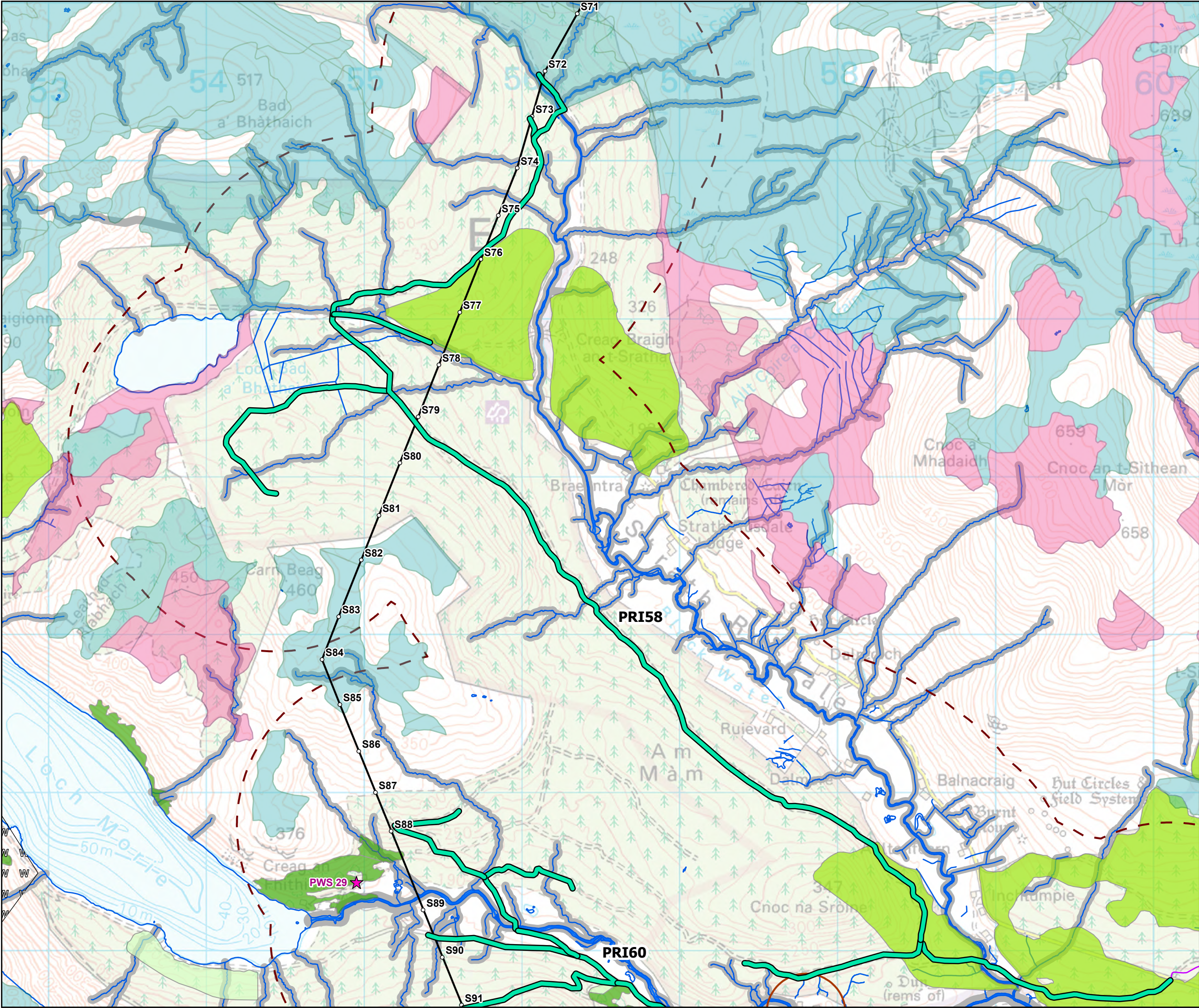
Electricity Networks

TRANSMISSION

PROJECTION: British National Grid

© Landmark Information Group Limited and/or its Data Suppliers (All rights reserved 2010).

Path: \uk\sprd\gis\01\Data\London\Projects\0652629 - SSE Beauty to Loch Buidhe\Maps\0720281 - SLBB - Public Road Improvements Environmental Appraisal.aprx / 0720281 - SLBB - Map Book 1b - Access Tracks - 25kDDP - Constraints 1000m



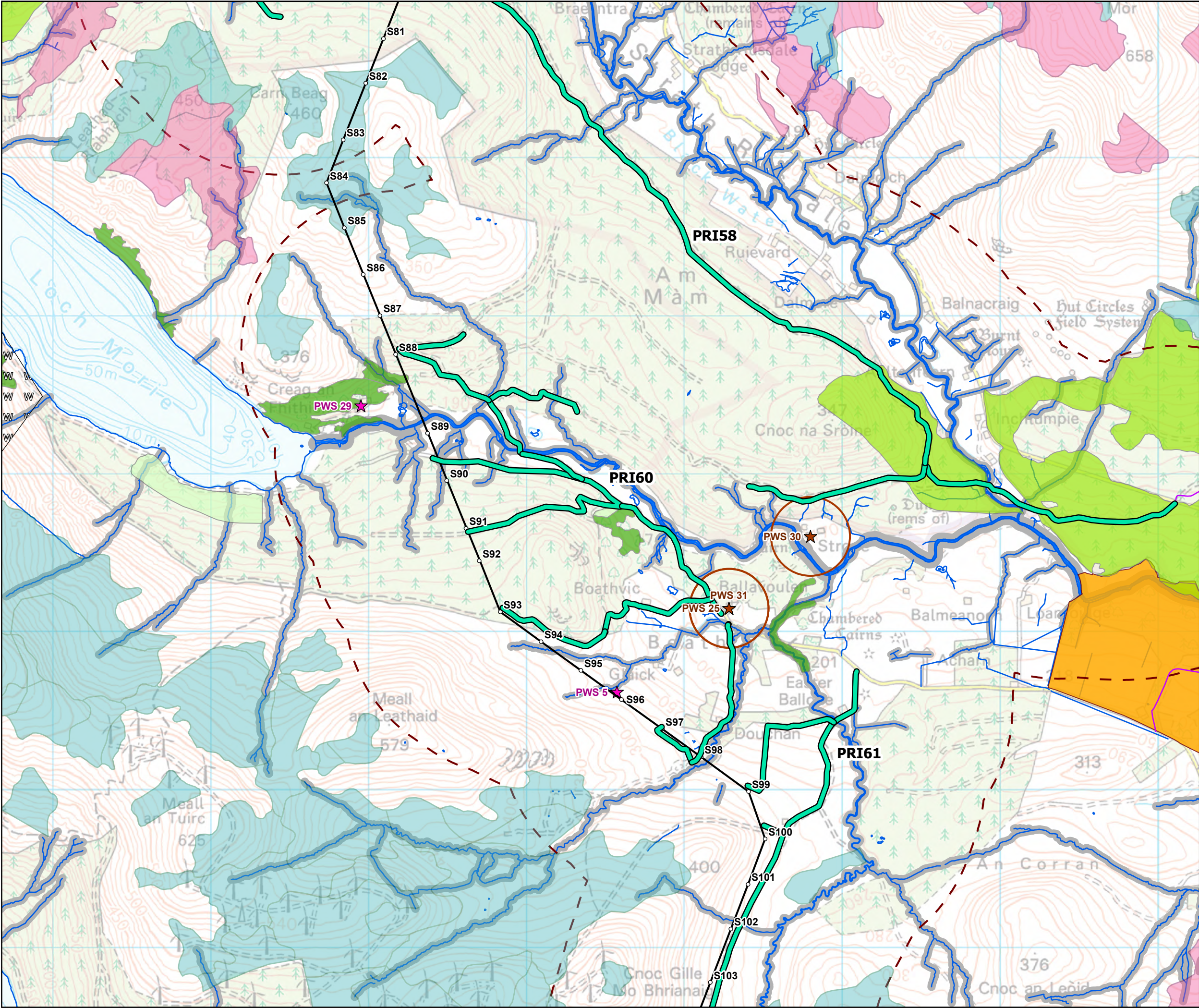
- Tower Location
- Overhead Alignment
- Existing access tracks - Some upgrade may be required
- Core Paths
- Wild Land
- ★ Ground Water PWS
- ★ Surface Water PWS
- Groundwater PWS Buffer (250m)
- Carbon and Peatland Class
 - 1
 - 2
- 1km Buffer
- Ancient Woodland Inventory (AWI)
 - Ancient (of semi-natural origin)
 - Long-Established (of plantation origin)
 - Other (on Roy map)
- Surface Water (OSMasterMap)
- WFD Watercourses (SEPA)
- Recommended Riparian Corridor (SEPA)



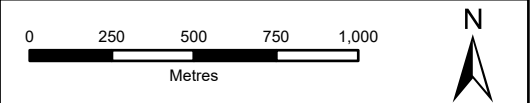
SCALE: See Scale Bar	VERSION: A01
SIZE: A3	DRAWN: CI
PROJECT: 0652629	CHECKED: SL
DATE: 7/15/2025	APPROVED: KG

Access Tracks: PRI58





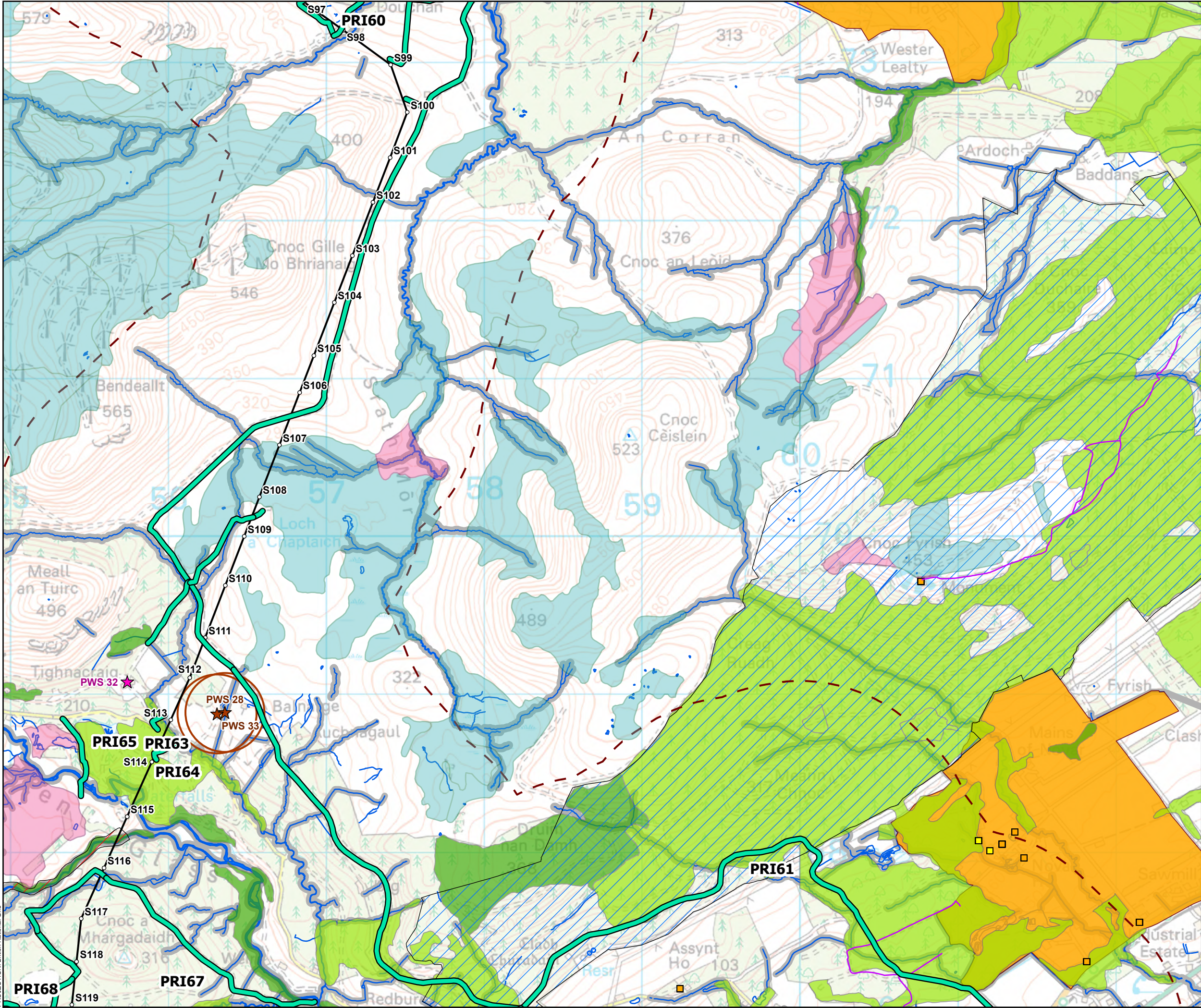
- Tower Location
- Overhead Alignment
- Existing access tracks - Some upgrade may be required
- Core Paths
- Wild Land
- ★ Ground Water PWS
- ★ Surface Water PWS
- Groundwater PWS Buffer (250m)
- Carbon and Peatland Class
 - 1
 - 2
- 1km Buffer
- Ancient Woodland Inventory (AWI)
 - Ancient (of semi-natural origin)
 - Long-Established (of plantation origin)
 - Other (on Roy map)
 - Garden and Designated Landscapes
- Surface Water (OSMasterMap)
- WFD Watercourses (SEPA)
- Recommended Riparian Corridor (SEPA)



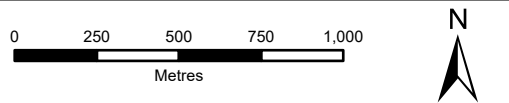
SCALE: See Scale Bar	VERSION: A01
SIZE: A3	DRAWN: CI
PROJECT: 0652629	CHECKED: SL
DATE: 7/15/2025	APPROVED: KG

Access Tracks: PRI60





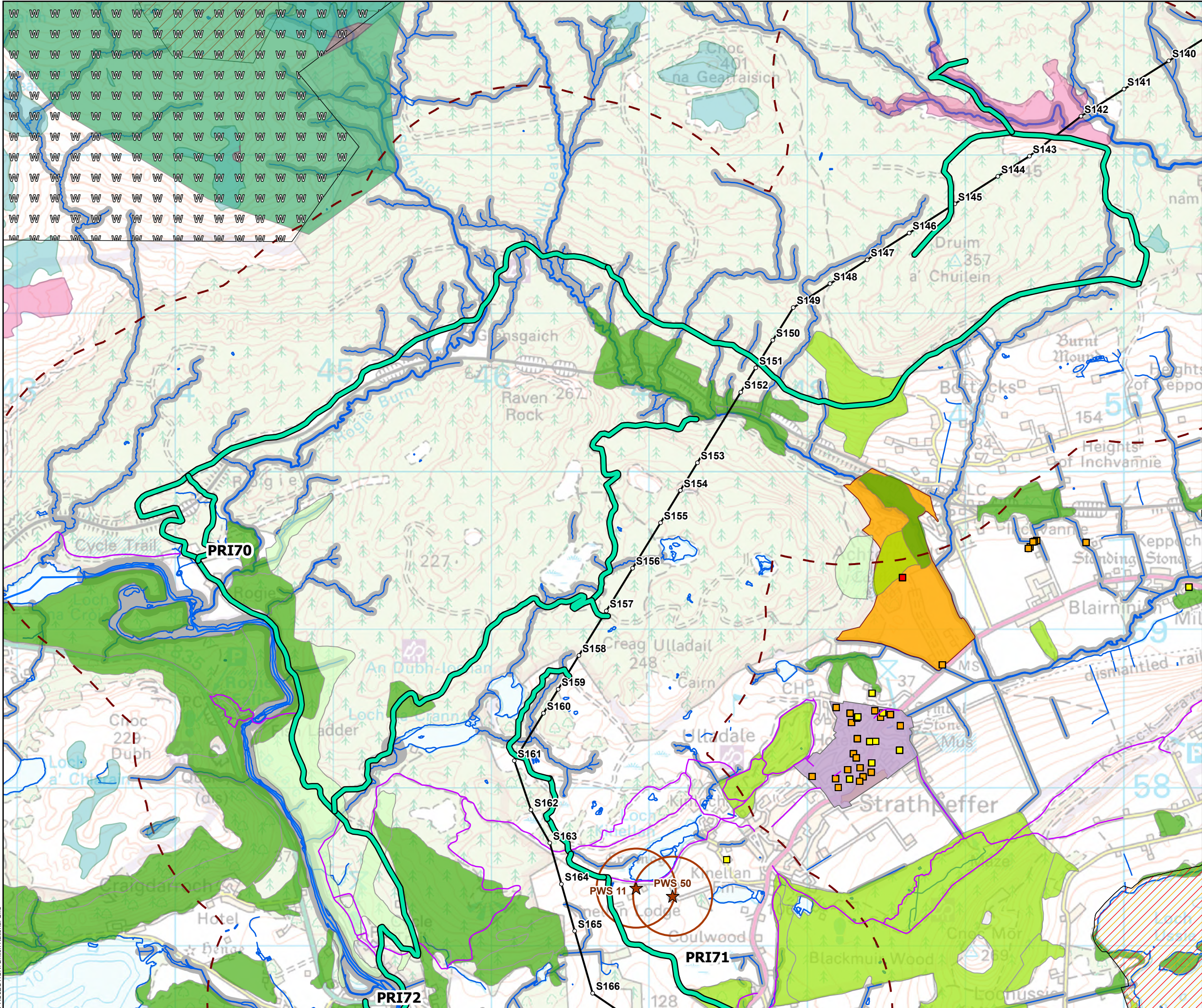
- Tower Location
- Overhead Alignment
- Existing access tracks - Some upgrade may be required
- Core Paths
- ★ Ground Water PWS
- ★ Surface Water PWS
- Groundwater PWS Buffer (250m)
- Carbon and Peatland Class
 - 1
 - 2
- 1km Buffer
- Listed Buildings
 - Category B
 - Category C
- Site Of Special Scientific Interest (SSSI)
- Special Protection Area (SPA)
- Ancient Woodland Inventory (AWI)
 - Ancient (of semi-natural origin)
 - Long-Established (of plantation origin)
 - Other (on Roy map)
- Garden and Designated Landscapes
- Surface Water (OSMasterMap)
- WFD Watercourses (SEPA)
- Recommended Riparian Corridor (SEPA)



SCALE: See Scale Bar	VERSION: A01
SIZE: A3	DRAWN: CI
PROJECT: 0652629	CHECKED: SL
DATE: 7/15/2025	APPROVED: KG

Access Tracks: PRI61



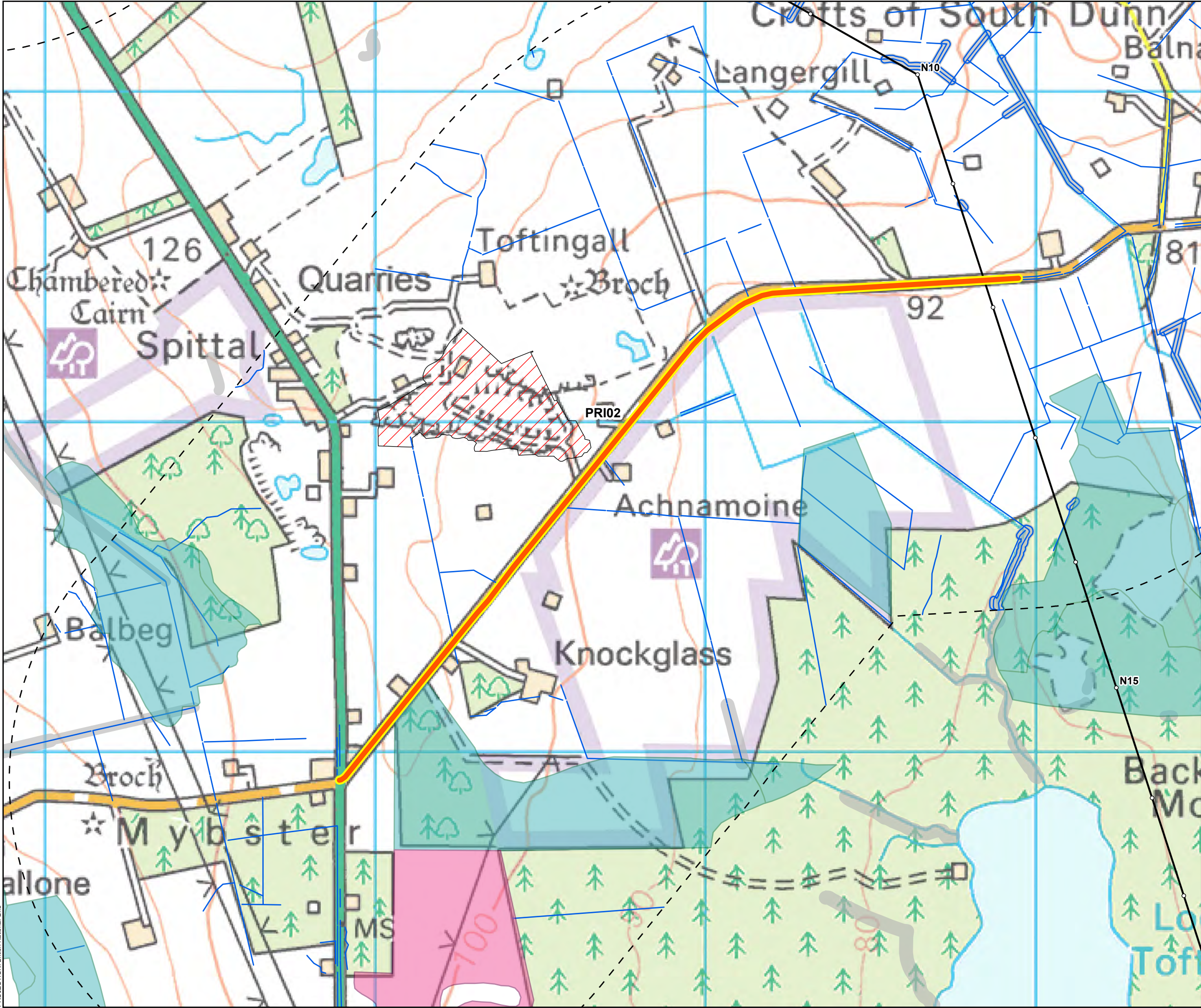


- Tower Location
- Overhead Alignment
- Existing access tracks - Some upgrade may be required
- Core Paths
- Wild Land
- ★ Ground Water PWS
- Groundwater PWS Buffer (250m)
- Carbon and Peatland Class
 - 1
 - 2
- 1km Buffer
- Listed Buildings
 - Category A
 - Category B
 - Category C
- Special Landscape Area
- Site Of Special Scientific Interest (SSSI)
- Special Area Of Conservation (SAC)
- Conservation Areas
- Ancient Woodland Inventory (AWI)
 - Ancient (of semi-natural origin)
 - Long-Established (of plantation origin)
 - Other (on Roy map)
- Garden and Designated Landscapes
- Surface Water (OSMasterMap)
- WFD Watercourses (SEPA)
- Recommended Riparian Corridor (SEPA)



SCALE: See Scale Bar	VERSION: A01
SIZE: A3	DRAWN: CI
PROJECT: 0652629	CHECKED: SL
DATE: 7/15/2025	APPROVED: KG

Access Tracks: PRI70



○ Tower Location

— Overhead Alignment

Existing Public Road - Upgrade Required

1km Buffer

Carbon and Peatland Class

1

2

SEPA Watercourses

Surface Water

RecommendedRiparianCorridorSEPA

Recommended Riparian Corridor

SSSI

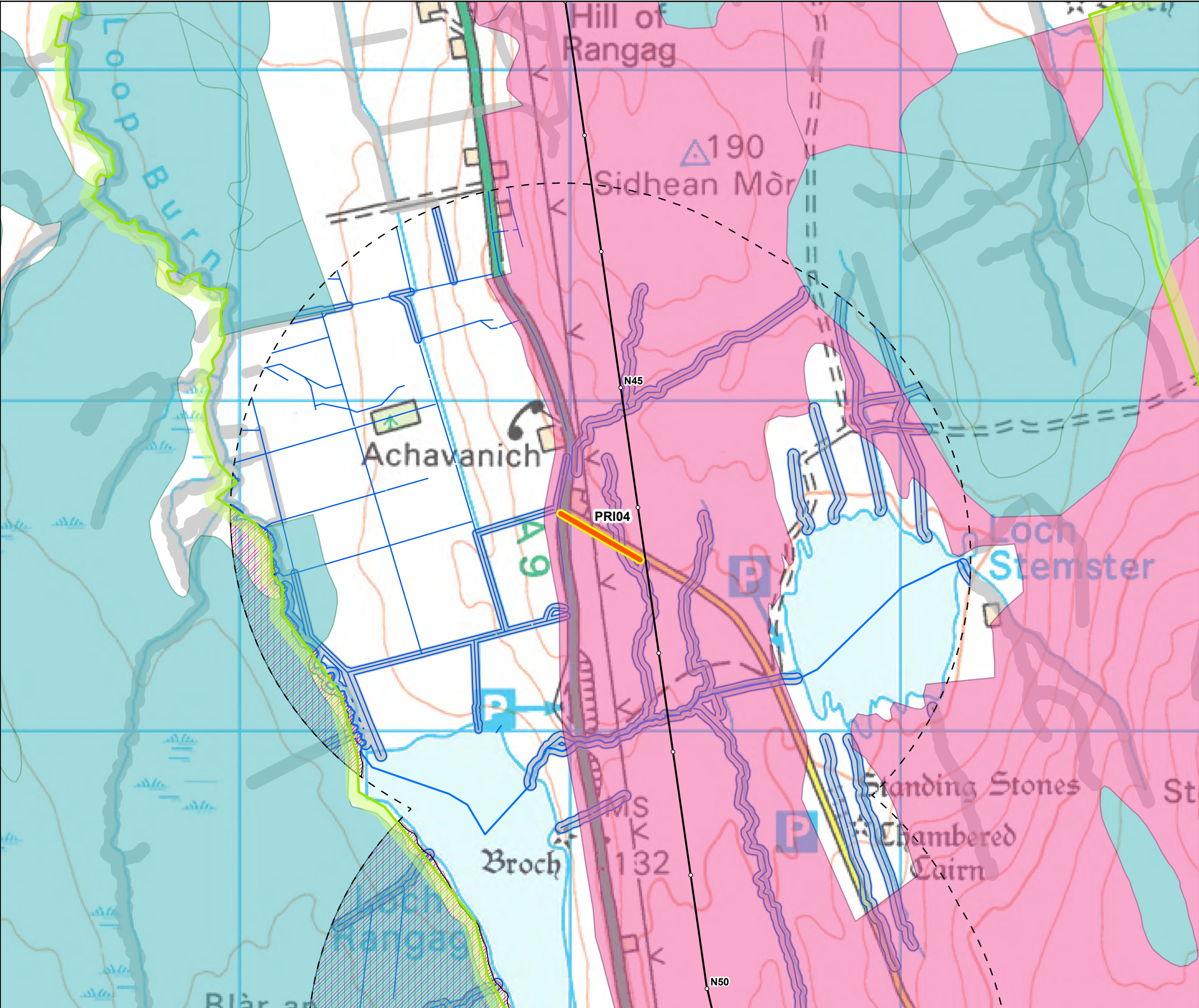
0 100 200 300 400 500

Metres

N

SCALE: See Scale Bar	VERSION: A01
SIZE: A3	DRAWN: CI
PROJECT: 0652629	CHECKED: SL
DATE: 7/15/2025	APPROVED: KG

Public Road: PRI02



Tower Location

Overhead Alignment

Existing Public Road - Upgrade Required

Flow Country World Heritage Site

1km Buffer

Carbon and Peatland Class

1

2

SEPA Watercourses

Surface Water

RecommendedRiparianCorridorSEPA

Recommended Riparian Corridor

RSPB Important Birds Area

Ramsar

SSSI

SAC

SPA

0100200300400500

Metres

N

SCALE: See Scale Bar

VERSION: A01

SIZE: A3

DRAWN: CI

PROJECT: 0652629

CHECKED: SL

DATE: 7/15/2025

APPROVED: KG

Public Road: PRI04

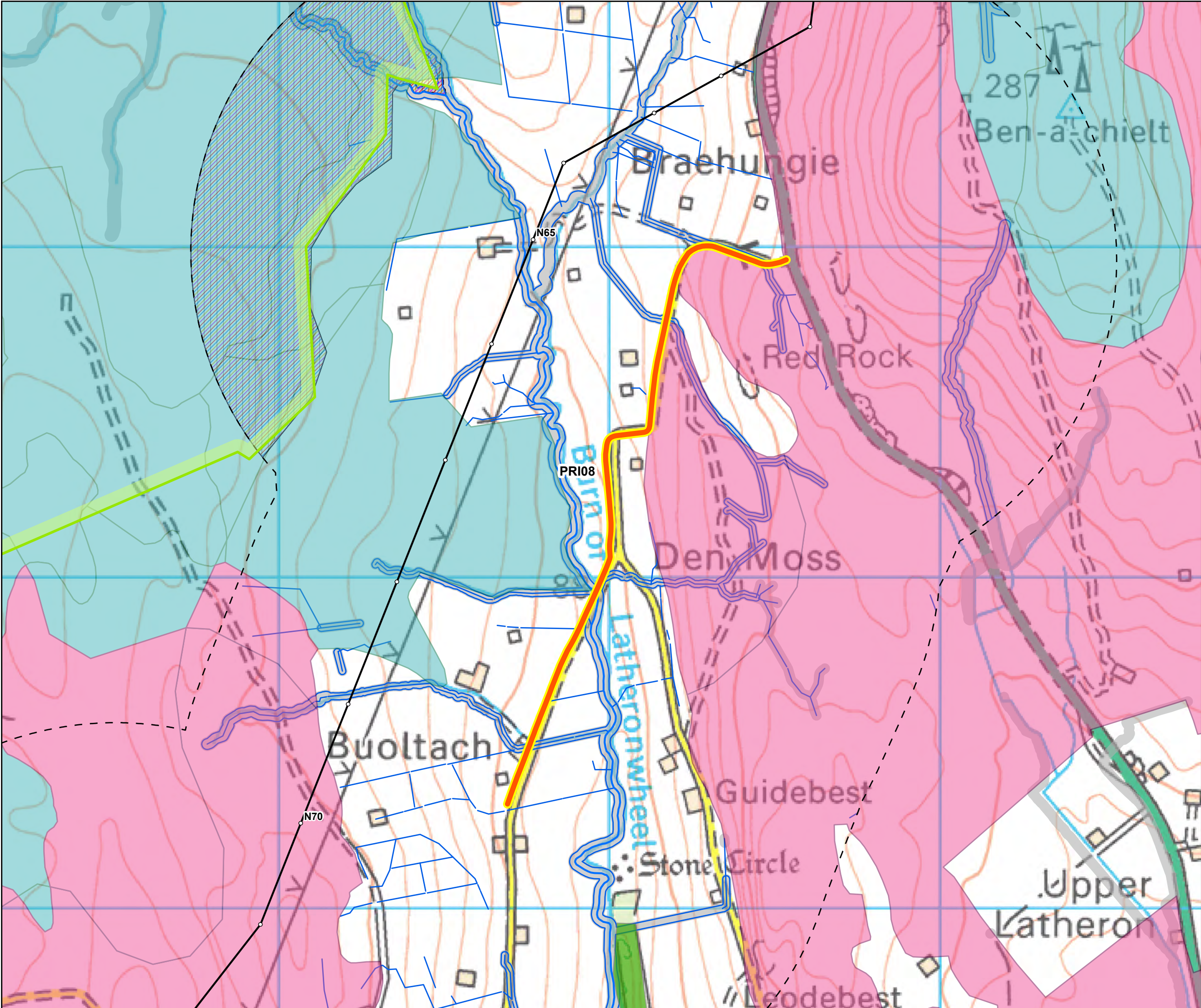
ERM

Scottish & Southern
Electricity Networks
TRANSMISSION

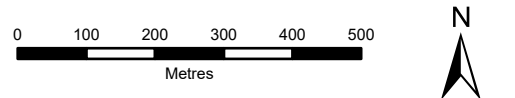
PROJECTION: British National Grid

© Landmark Information Group Limited and/or its Data Suppliers (All rights reserved 2010).

Path: \\uksprdgisf011Data\London\Projects\0652629 - SSE Beauly to Loch Buidhe\Maps\0720281 - SLBB - Public Road Improvements Environmental Appraisal.aprx / 0720281 - SLBB - Map Book 2a - Public Roads - 12kDDP - Constraints 1000m



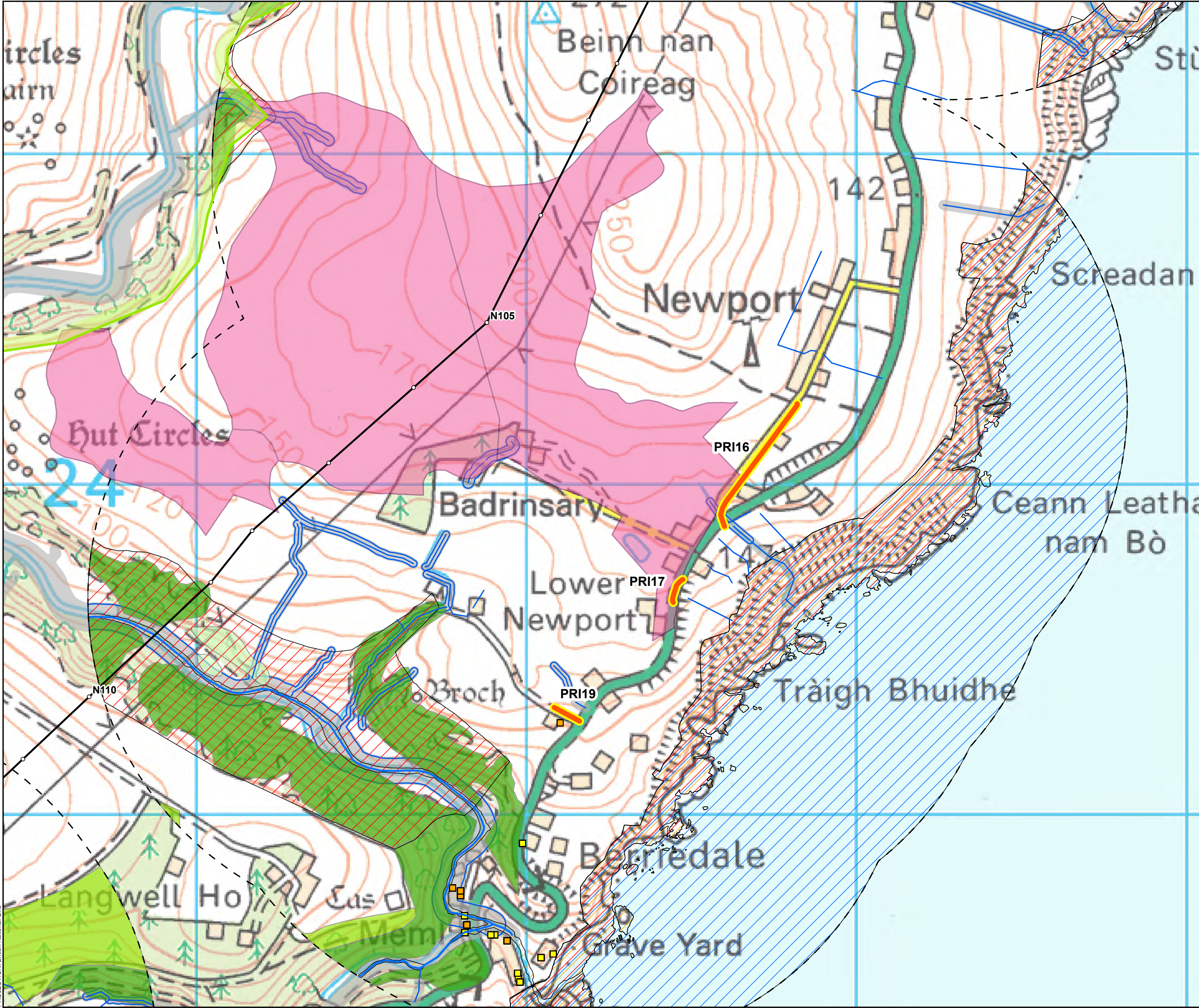
- Tower Location
- Overhead Alignment
- Existing Public Road - Upgrade Required
- Flow Country World Heritage Site
- 1km Buffer
- Carbon and Peatland Class
 - 1
 - 2
- SEPA Watercourses
- Surface Water
- RecommendedRiparianCorridorSEPA
- Recommended Riparian Corridor
- RSPB Important Birds Area
- Ramsar
- SSSI
- SAC
- SPA
- Ancient Woodland Inventory (AWI)
 - Ancient (of semi-natural origin)



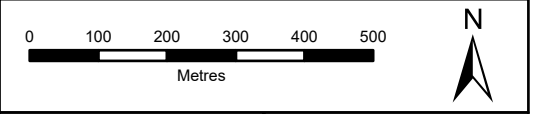
SCALE: See Scale Bar	VERSION: A01
SIZE: A3	DRAWN: CI
PROJECT: 0652629	CHECKED: SL
DATE: 7/15/2025	APPROVED: KG

Public Road: PRI08





- Tower Location
- Overhead Alignment
- Existing Public Road - Upgrade Required
- Flow Country World Heritage Site
- 1km Buffer
- Carbon and Peatland Class
 - 2
- SEPA Watercourses
- Surface Water
- RecommendedRiparianCorridorSEPA
- Recommended Riparian Corridor
- Listed Buildings
 - Category B
 - Category C
- SSSI
- SAC
- SPA
- Ancient Woodland Inventory (AWI)
 - Ancient (of semi-natural origin)
 - Long-Established (of plantation origin)
 - Other (on Roy map)



SCALE: See Scale Bar	VERSION: A01
SIZE: A3	DRAWN: CI
PROJECT: 0652629	CHECKED: SL
DATE: 7/15/2025	APPROVED: KG

Public Road: PRI16, PRI17, PRI19



