

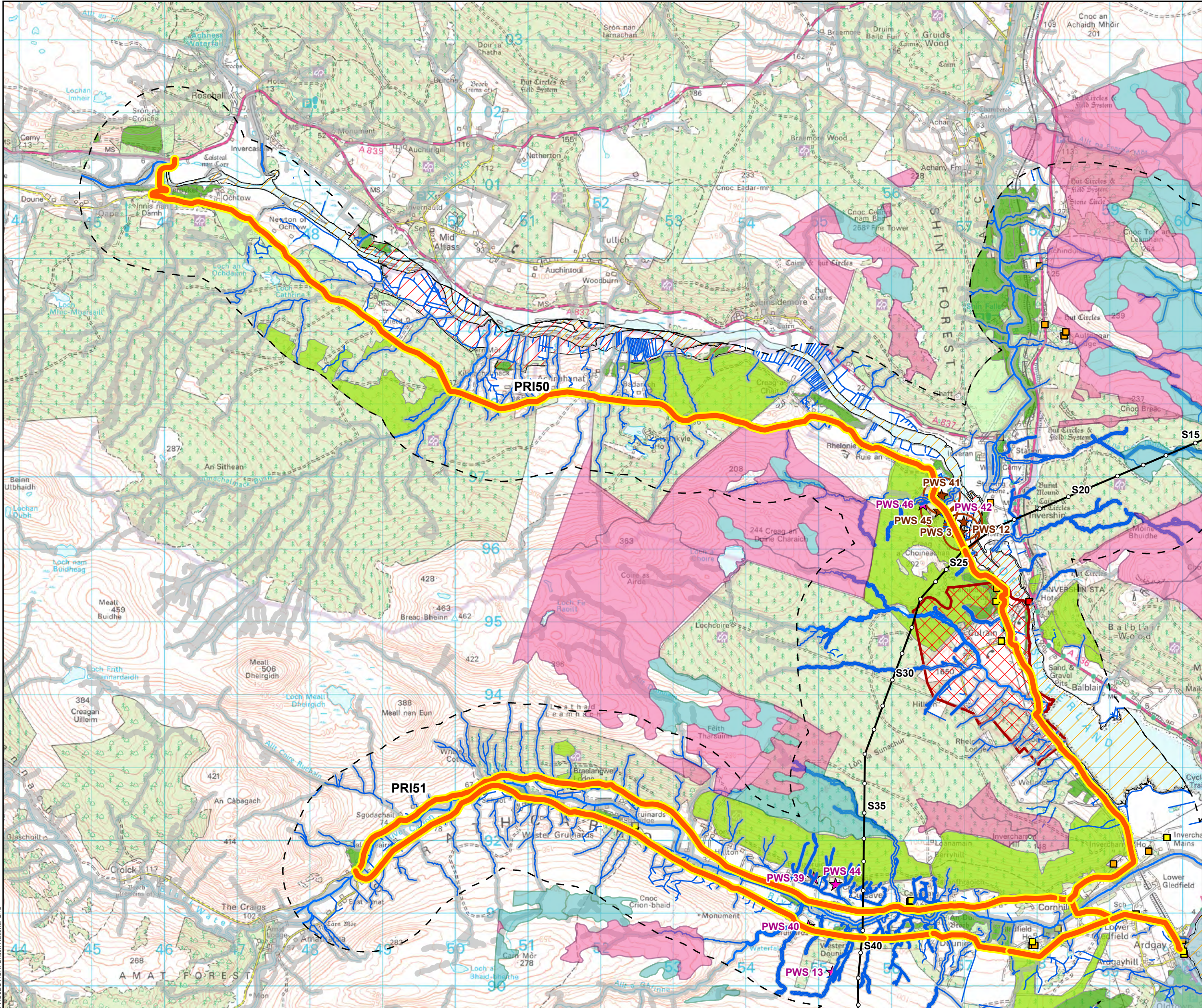
- Tower Location
- Existing Public Road - Upgrade Required
- Overhead Alignment
- 1km Buffer
- Carbon and Peatland Class
 - 1
 - 2
- SEPA Watercourses
- Surface Water
- Recommended Riparian Corridor
- RecommendedRiparianCorridorSEPA
- Surface Water PWS
- Ground Water PWS
- Groundwater PWS 250m Buffer
- RSPB Important Birds Area
- Listed Buildings
 - Category A
 - Category B
 - Category C
- Battlefields
- SSSI
- SAC
- SPA
- National Scenic Area
- Ancient Woodland Inventory (AWI)
 - Ancient (of semi-natural origin)
 - Long-Established (of plantation origin)
 - Other (on Roy map)



| | |
|----------------------|--------------|
| SCALE: See Scale Bar | VERSION: A01 |
| SIZE: A3 | DRAWN: CI |
| PROJECT: 0652629 | CHECKED: SL |
| DATE: 7/15/2025 | APPROVED: KG |

Public Road: A897 PRI44





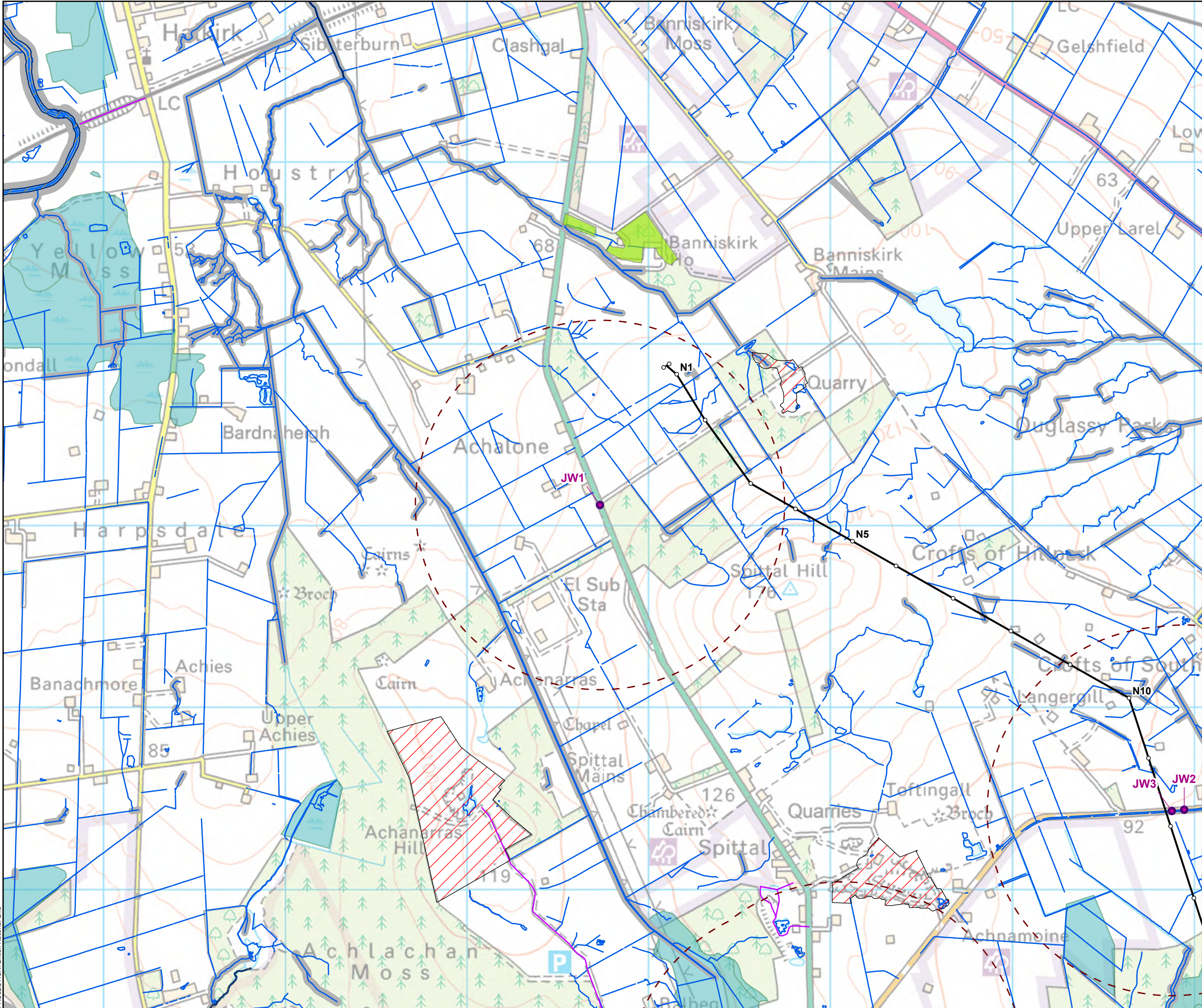
- Tower Location
- Existing Public Road - Upgrade Required
- Overhead Alignment
- 1km Buffer
- Carbon and Peatland Class
 - 1
 - 2
- SEPA Watercourses
 - Surface Water
 - Recommended Riparian Corridor
 - Recommended Riparian Corridor SEPA
- Surface Water PWS
- Ground Water PWS
- Groundwater PWS 250m Buffer
- Listed Buildings
 - Category A
 - Category B
 - Category C
 - Battlefields
 - SSSI
 - SAC
 - National Scenic Area
- Ancient Woodland Inventory (AWI)
 - Ancient (of semi-natural origin)
 - Long-Established (of plantation origin)
 - Other (on Roy map)



| | |
|----------------------|--------------|
| SCALE: See Scale Bar | VERSION: A01 |
| SIZE: A3 | DRAWN: CI |
| PROJECT: 0652629 | CHECKED: SL |
| DATE: 7/15/2025 | APPROVED: KG |

Public Road: A897 PRI50, PRI51





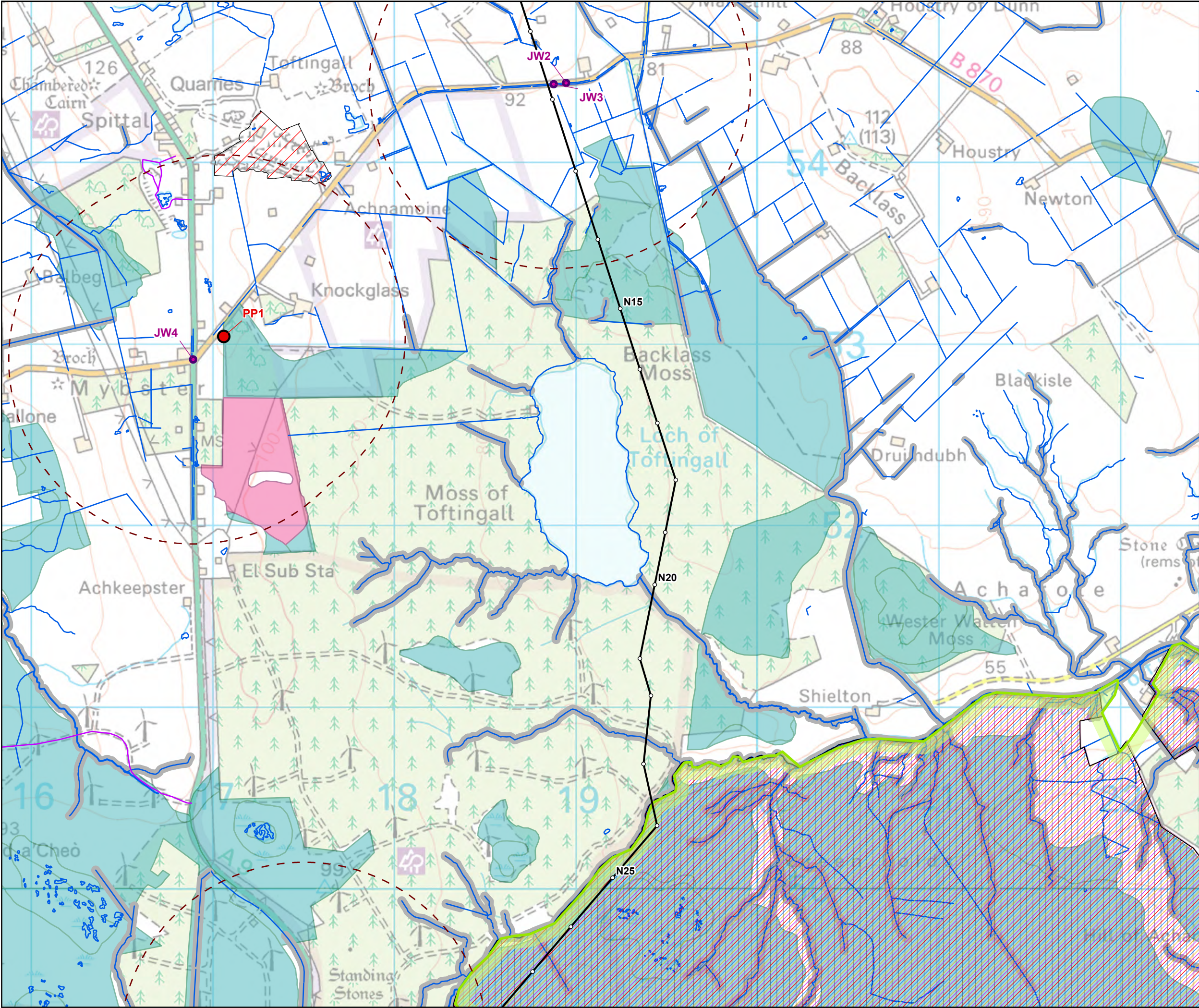
- Tower Location
- Overhead Alignment
- Widening Junctions
- Passing Places
- - - 1km Buffer
- ▨ Site Of Special Scientific Interest (SSSI)
- ▨ Special Area Of Conservation (SAC)
- Ancient Woodland Inventory (AWI)
- Long-Established (of plantation origin)
- Core Paths
- Surface Watercourse (OS MasterMap)
- WFD Watercourses (SEPA)
- Recommended Riparian Corridor (SEPA)
- Carbon and Peatland Class
- 1



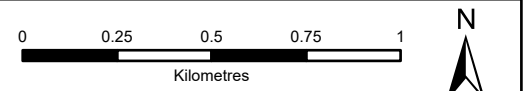
| | |
|----------------------|--------------|
| SCALE: See Scale Bar | VERSION: A01 |
| SIZE: A3 | DRAWN: CI |
| PROJECT: 0652629 | CHECKED: SL |
| DATE: 7/17/2025 | APPROVED: KG |

Page 1
Passing Places and Junction Widening



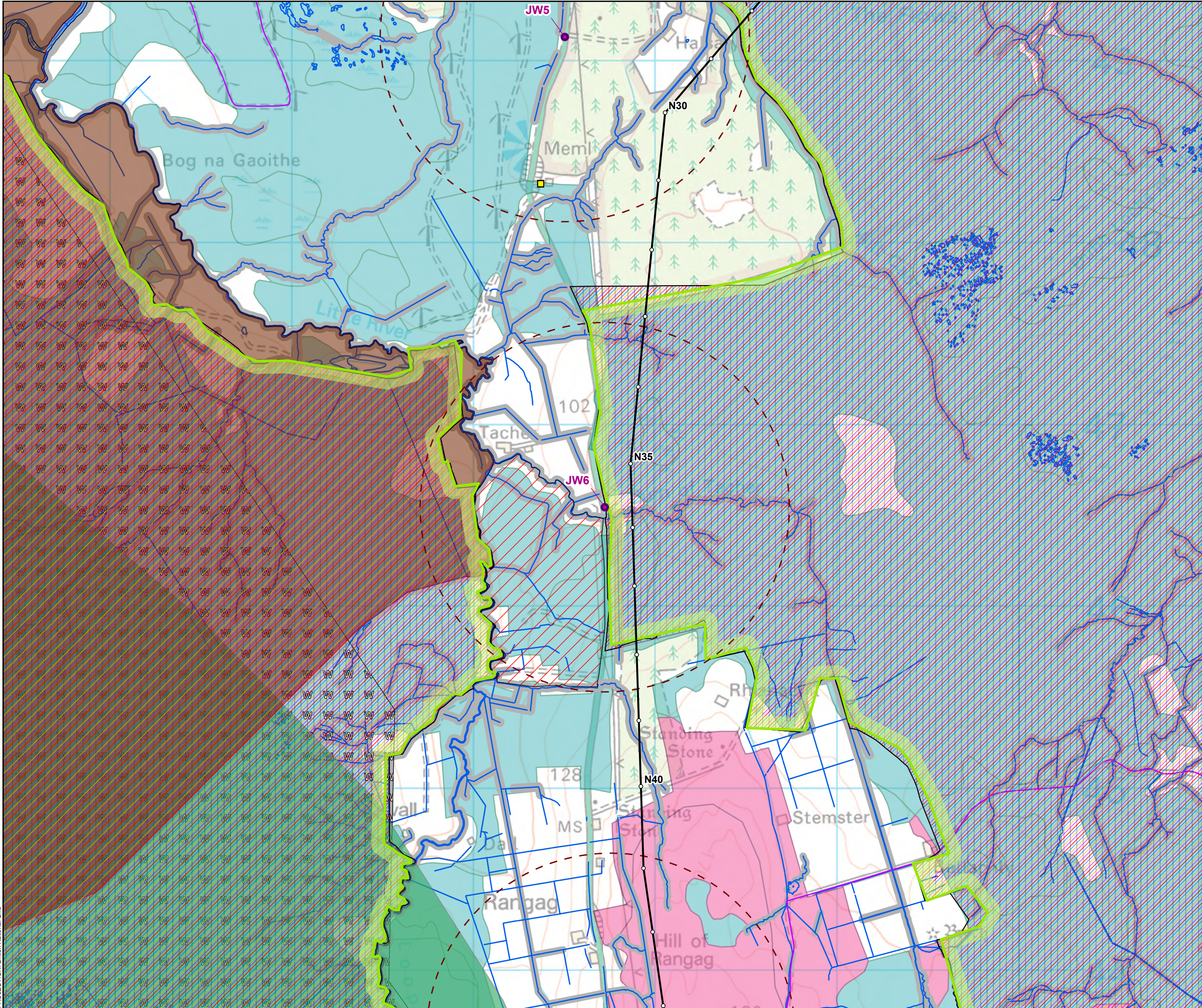


- Tower Location
- Overhead Alignment
- Widening Junctions
- Passing Places
- - - 1km Buffer
- Flow Country World Heritage Site
- ▨ Site Of Special Scientific Interest (SSSI)
- ▨ Special Protection Area (SPA)
- ▨ Special Area Of Conservation (SAC)
- ▨ Ramsar Site
- ▨ RSPB Important Birds Area
- Core Paths
- Surface Watercourse (OS MasterMap)
- WFD Watercourses (SEPA)
- Recommended Riparian Corridor (SEPA)
- Carbon and Peatland Class
 - 1
 - 2

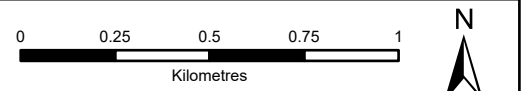


| | |
|----------------------|--------------|
| SCALE: See Scale Bar | VERSION: A01 |
| SIZE: A3 | DRAWN: CI |
| PROJECT: 0652629 | CHECKED: SL |
| DATE: 7/17/2025 | APPROVED: KG |



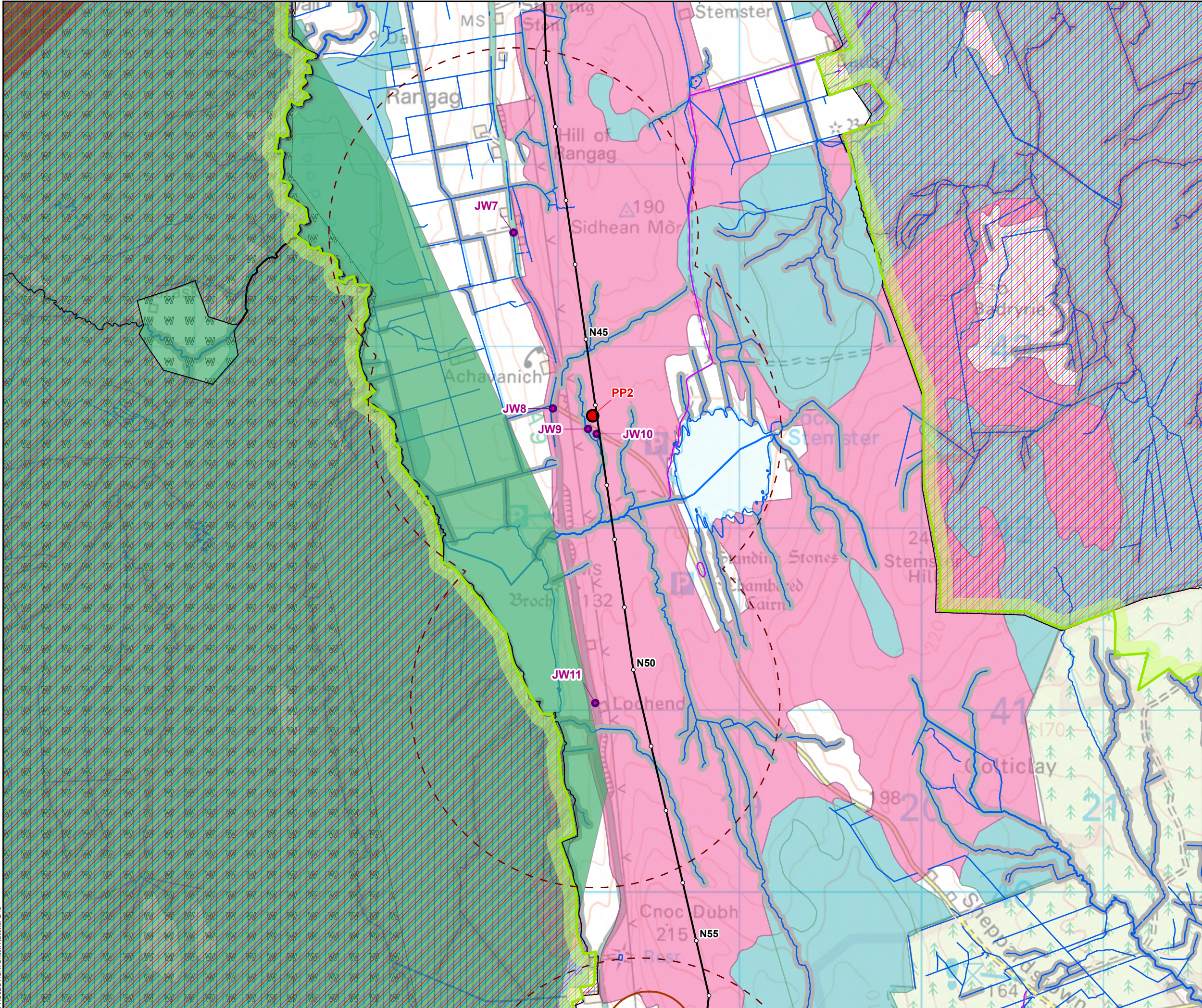


- Tower Location
- Overhead Alignment
- Widening Junctions
- Passing Places
- - - 1km Buffer
- Flow Country World Heritage Site
- Listed Buildings
 - Category C
- ▨ Site Of Special Scientific Interest (SSSI)
- ▨ Special Protection Area (SPA)
- ▨ Special Area Of Conservation (SAC)
- ▨ Ramsar Site
- RSPB Reserves
- ▨ RSPB Important Birds Area
- Special Landscape Area
- Core Paths
- ▨ Wild Land
- Surface Watercourse (OS MasterMap)
- WFD Watercourses (SEPA)
- Recommended Riparian Corridor (SEPA)
- Carbon and Peatland Class
 - 1
 - 2

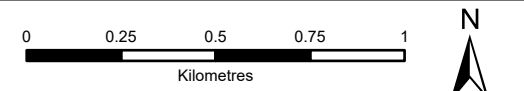


| | |
|----------------------|--------------|
| SCALE: See Scale Bar | VERSION: A01 |
| SIZE: A3 | DRAWN: CI |
| PROJECT: 0652629 | CHECKED: SL |
| DATE: 7/17/2025 | APPROVED: KG |



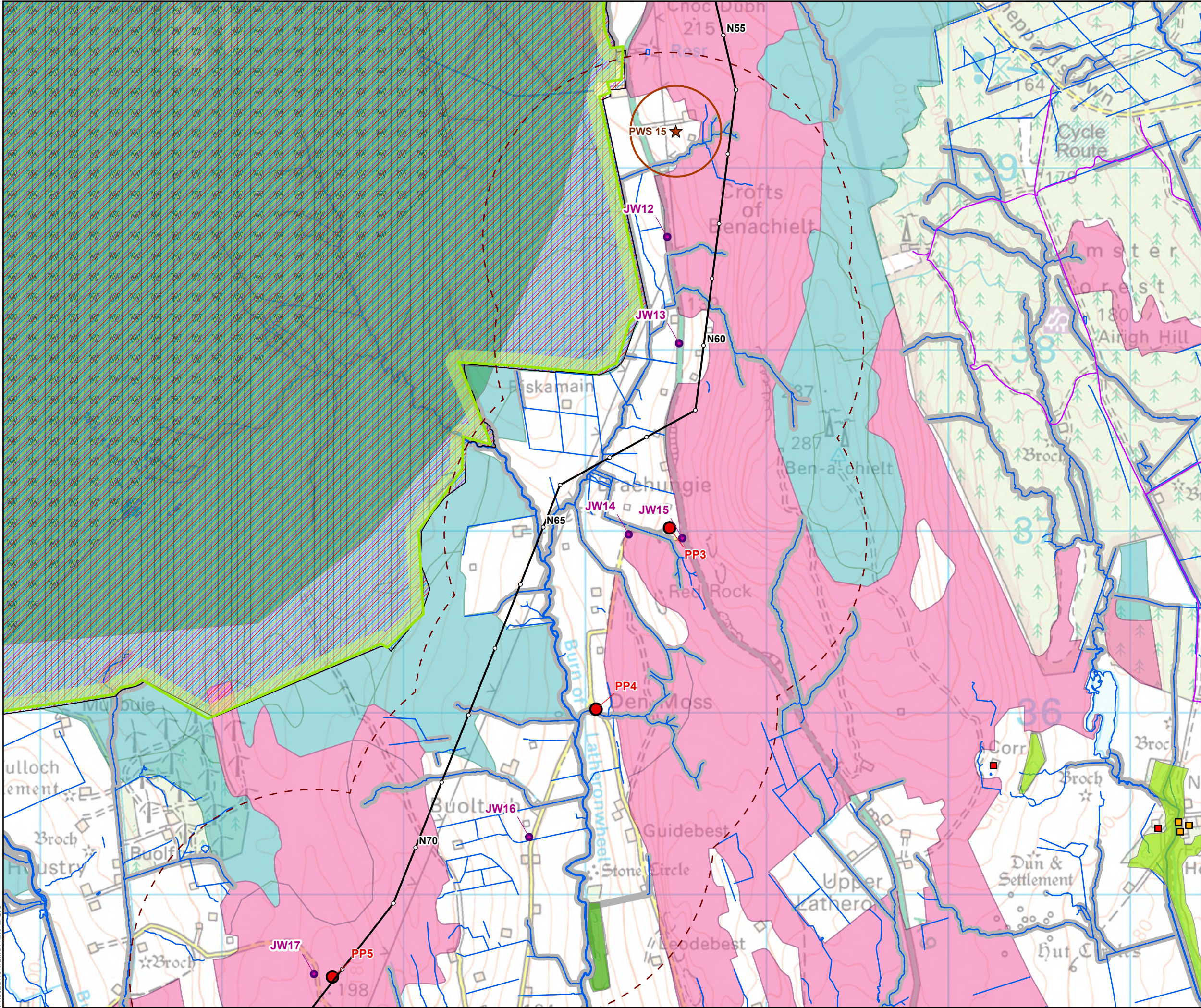


- Tower Location
- Overhead Alignment
- Widening Junctions
- Passing Places
- - - 1km Buffer
- Flow Country World Heritage Site
- ▨ Site Of Special Scientific Interest (SSSI)
- ▨ Special Protection Area (SPA)
- ▨ Special Area Of Conservation (SAC)
- ▨ Ramsar Site
- RSPB Reserves
- ▨ RSPB Important Birds Area
- Special Landscape Area
- Core Paths
- ▨ Wild Land
- Groundwater PWS Buffer (250 m)
- Surface Watercourse (OS MasterMap)
- WFD Watercourses (SEPA)
- Recommended Riparian Corridor (SEPA)
- Carbon and Peatland Class
 - 1
 - 2



| | |
|----------------------|--------------|
| SCALE: See Scale Bar | VERSION: A01 |
| SIZE: A3 | DRAWN: CI |
| PROJECT: 0652629 | CHECKED: SL |
| DATE: 7/17/2025 | APPROVED: KG |



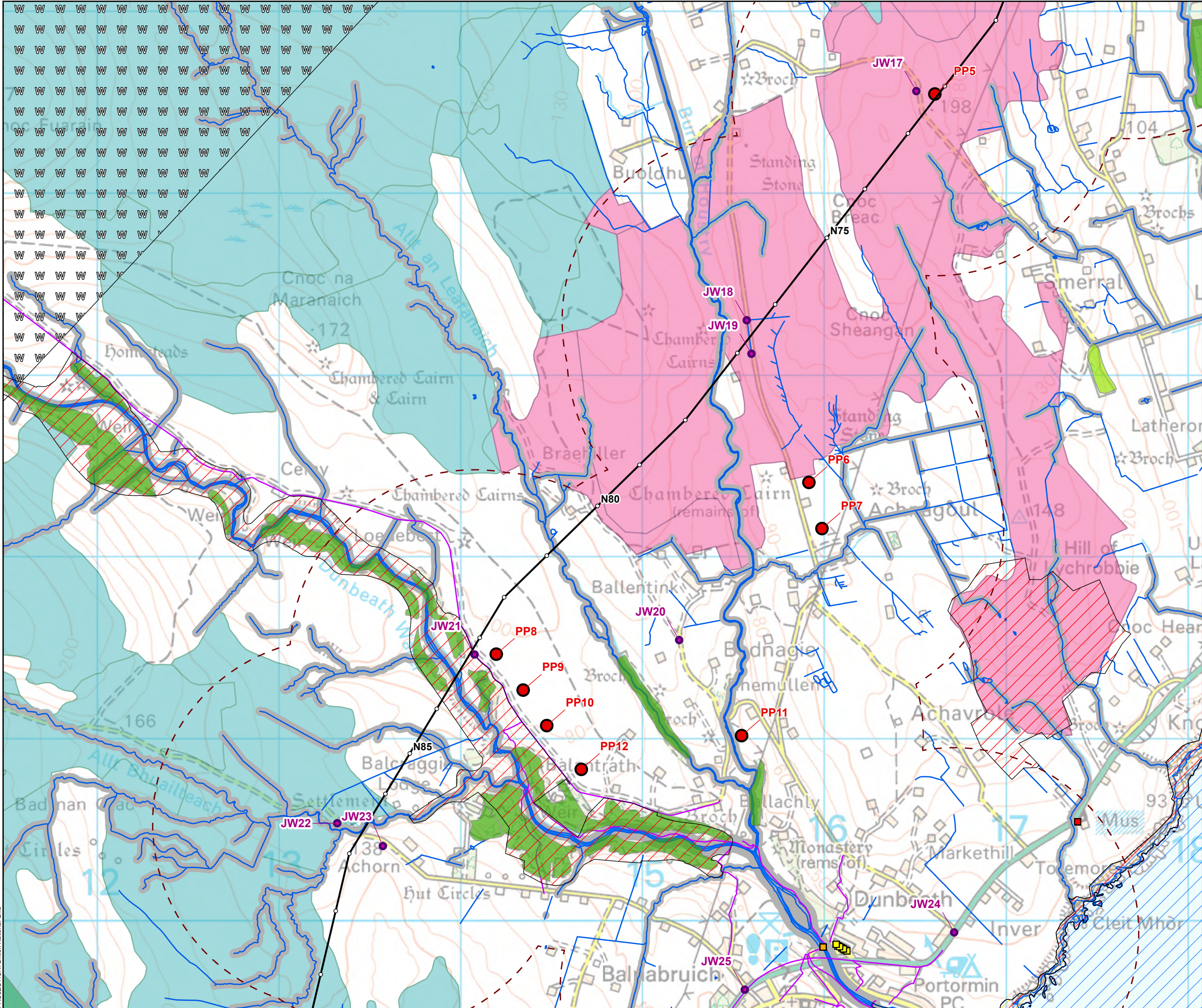


- Tower Location
- Overhead Alignment
- Widening Junctions
- Passing Places
- - - 1km Buffer
- Flow Country World Heritage Site
- Listed Buildings
 - Category A
 - Category B
- Site Of Special Scientific Interest (SSSI)
- Special Protection Area (SPA)
- Special Area Of Conservation (SAC)
- Ramsar Site
- RSPB Important Birds Area
- Ancient Woodland Inventory (AWI)
 - Ancient (of semi-natural origin)
 - Long-Established (of plantation origin)
- Special Landscape Area
- Core Paths
- W Wild Land
- ★ Groundwater PWS
- Groundwater PWS Buffer (250 m)
- Surface Watercourse (OS MasterMap)
- WFD Watercourses (SEPA)
- Recommended Riparian Corridor (SEPA)
- Carbon and Peatland Class
 - 1
 - 2

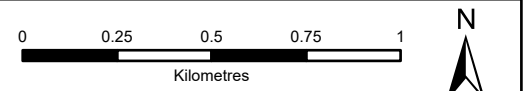


| | |
|----------------------|--------------|
| SCALE: See Scale Bar | VERSION: A01 |
| SIZE: A3 | DRAWN: CI |
| PROJECT: 0652629 | CHECKED: SL |
| DATE: 7/17/2025 | APPROVED: KG |





- Tower Location
- Overhead Alignment
- Widening Junctions
- Passing Places
- - - 1km Buffer
- Listed Buildings
 - Category A
 - Category B
 - Category C
- Site Of Special Scientific Interest (SSSI)
- Special Protection Area (SPA)
- Special Area Of Conservation (SAC)
- Ancient Woodland Inventory (AWI)
 - Ancient (of semi-natural origin)
 - Long-Established (of plantation origin)
 - Special Landscape Area
- Core Paths
- W Wild Land
- Surface Watercourse (OS MasterMap)
- WFD Watercourses (SEPA)
- Recommended Riparian Corridor (SEPA)
- Carbon and Peatland Class
 - 1
 - 2



| | |
|----------------------|--------------|
| SCALE: See Scale Bar | VERSION: A01 |
| SIZE: A3 | DRAWN: CI |
| PROJECT: 0652629 | CHECKED: SL |
| DATE: 7/17/2025 | APPROVED: KG |



