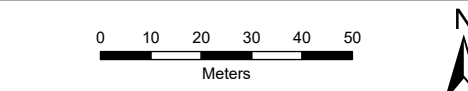




- Legend
- Proposed OHL Alignment
 - 100m Horizontal Limit of Deviation
 - Proposed Steel Lattice Tower
 - Domestic Curtilage Boundary
 - Direction of Principal Frontage
 - Direction of Wireline View to Nearest Tower

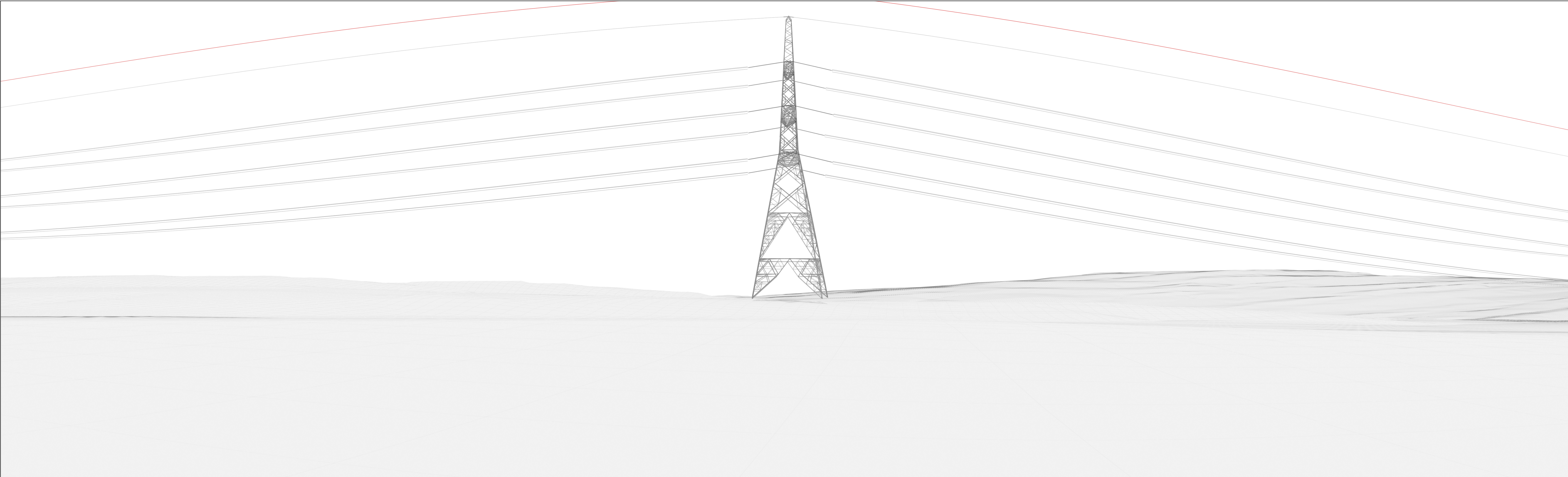


SCALE: 1:1500	VERSION: A01
SIZE: A3	DRAWN: WM
PROJECT: 0720281	CHECKED: NAO
DATE: 06/08/2025	APPROVED: KG

Volume 5 – Appendix 7.11 RVAA – Figure 1.3a
Residential Visual Amenity Location:
SA-04 Schoolhouse Achavanich



SA-04 Schoolhouse Achavanich Grid Reference: 318009 942654



Wireline Drawing - Proposed Development Shown In Red
----- Vertical Limit of Deviation: the maximum height of a tower above ground level

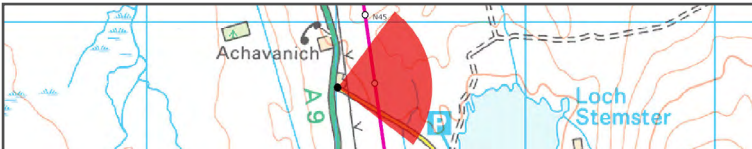
View flat at a comfortable arm's length

Volume 5 - Appendix 7.11 RVAA - Figure 1.3b
Residential Visual Amenity Location : SA-04 Schoolhouse Achavanich
Beauly to Spittal OHL



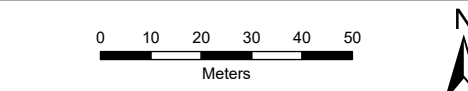
OS reference: 318009 942654
Eye Level: 150m AOD
Direction of view: 82°
Distance to Nearest Tower 198 m

Horizontal field of view: 90° (cylindrical projection)
Principal distance: 812.5mm
Paper size: 841 x 297 mm
Correct printed image size: 820 x 260 mm





- Legend
- Proposed OHL Alignment
 - 100m Horizontal Limit of Deviation
 - Proposed Steel Lattice Tower
 - Domestic Curtilage Boundary
 - Direction of Principal Frontage
 - Direction of Wireline View to Nearest Tower



SCALE: 1:1500	VERSION: A01
SIZE: A3	DRAWN: WM
PROJECT: 0720281	CHECKED: NAO
DATE: 06/08/2025	APPROVED: KG

Volume 5 – Appendix 7.11 RVAA – Figure 1.4a
Residential Visual Amenity Location:
SA-04 Corrie View



SA-04 Corrie View Grid Reference: 318573 939256