

- Legend**
- Proposed OHL Alignment
 - - - 100m Horizontal Limit of Deviation
 - Proposed Steel Lattice Tower
 - Domestic Curtilage Boundary
 - Direction of Principal Frontage
 - ↙ Direction of Wireline View to Nearest Tower



SCALE: 1:1500	VERSION: A01
SIZE: A3	DRAWN: WM
PROJECT: 0720281	CHECKED: NAO
DATE: 06/08/2025	APPROVED: KG

Volume 5 – Appendix 7.11 RVAA – Figure 1.10a
Residential Visual Amenity Location:
SB-15 Dalnamain



SB-15 Dalnamain Grid Reference: 272485 898554

PROJECTION: British National Grid
 OS25k and DTM © Landmark Information Group Limited and/or its Data Suppliers (All rights reserved 2010). Maxar, Microsoft



Wireline Drawing - Proposed Development Shown In Red
 - - - - Vertical Limit of Deviation: the maximum height of a tower above ground level

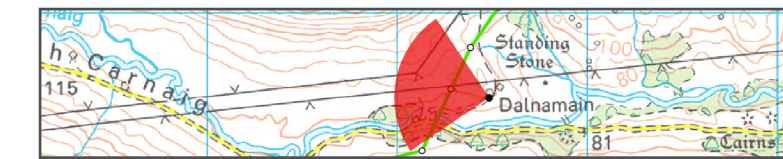
View flat at a comfortable arm's length

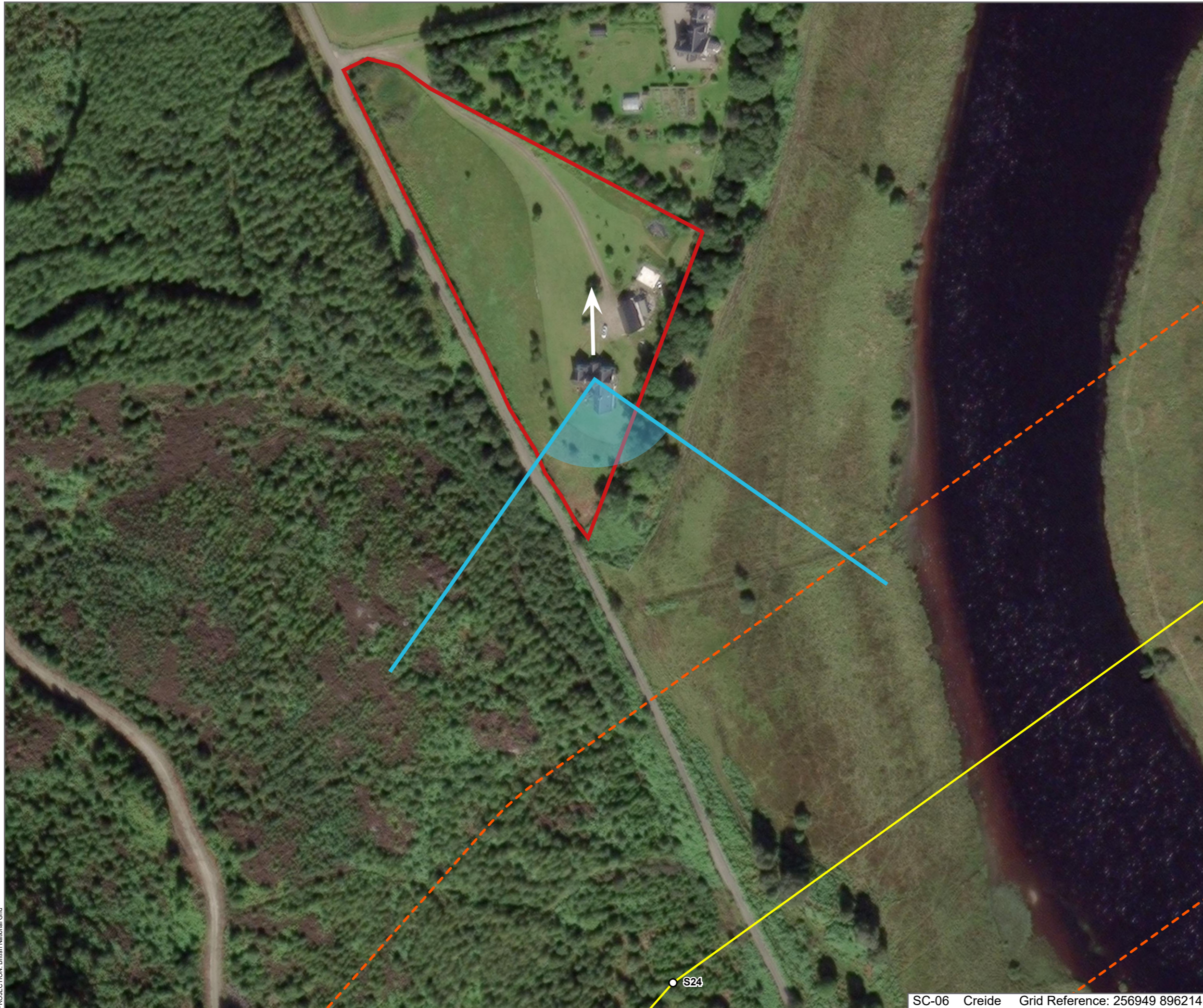
Volume 5 - Appendix 7.11 RVAA - Figure 1.10b
 Residential Visual Amenity Location : SB-15 Dalnamain
Beauly to Spittal OHL



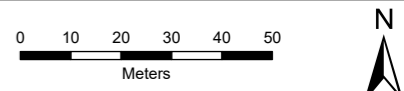
OS reference: 272485 898554
 Eye Level: 99m AOD
 Direction of view: 282°
 Distance to Nearest Tower: 206 m

Horizontal field of view: 90° (cylindrical projection)
 Principal distance: 812.5mm
 Paper size: 841 x 297 mm
 Correct printed image size: 820 x 260 mm





- Legend**
- Proposed OHL Alignment
 - - - 100m Horizontal Limit of Deviation
 - Proposed Steel Lattice Tower
 - ▭ Domestic Curtilage Boundary
 - ➡ Direction of Principal Frontage
 - ➡ Direction of Wireline View to Nearest Tower



SCALE: 1:1500	VERSION: A01
SIZE: A3	DRAWN: WM
PROJECT: 0720281	CHECKED: NAO
DATE: 06/08/2025	APPROVED: KG

Volume 5 – Appendix 7.11 RVAA – Figure 1.11a
Residential Visual Amenity Location:
SC-06 Creide



SC-06 Creide Grid Reference: 256949 896214

PROJECTION: British National Grid
 OS25k and DTM © Landmark Information Group Limited and/or its Data Suppliers (All rights reserved 2010). Maxar, Microsoft