

Wireline Drawing - Proposed Development Shown In Red
 - - - - Vertical Limit of Deviation: the maximum height of a tower above ground level

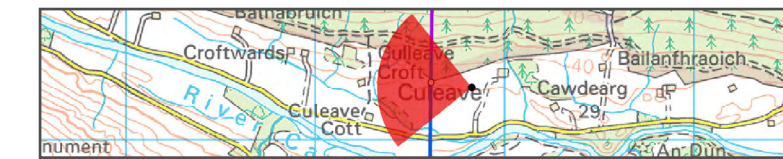
View flat at a comfortable arm's length

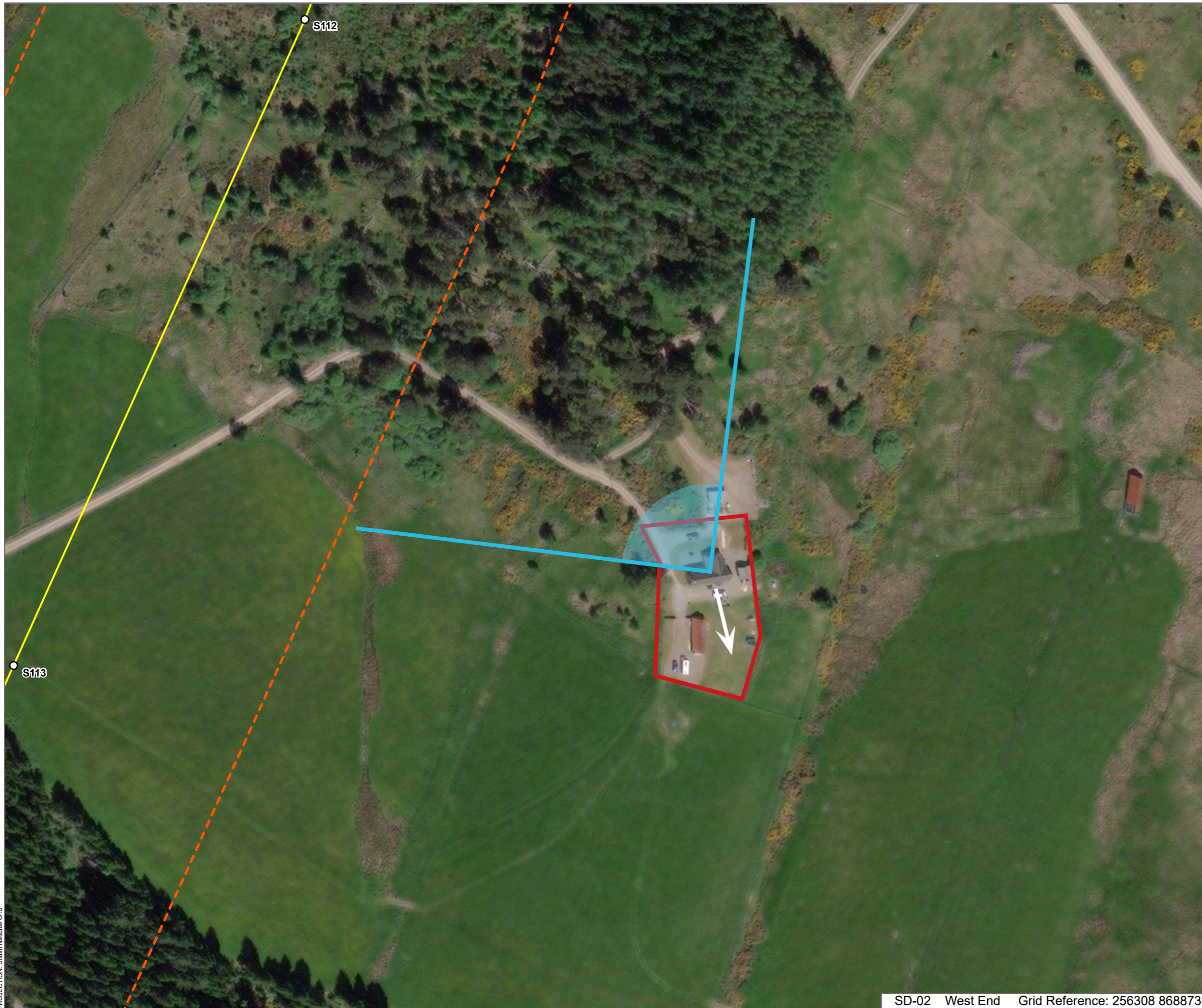
Volume 5 - Appendix 7.11 RVAA - Figure 1.12b
 Residential Visual Amenity Location : SD-01 Sonnycroft
Beauly to Spittal OHL



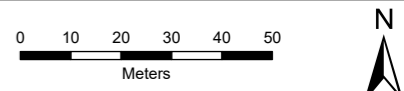
OS reference: 255827 891276
 Eye Level: 34m AOD
 Direction of view: 276°
 Distance to Nearest Tower: 216 m

Horizontal field of view: 90° (cylindrical projection)
 Principal distance: 812.5mm
 Paper size: 841 x 297 mm
 Correct printed image size: 820 x 260 mm





- Legend**
- Proposed OHL Alignment
 - - - 100m Horizontal Limit of Deviation
 - Proposed Steel Lattice Tower
 - Domestic Curtilage Boundary
 - Direction of Principal Frontage
 - ↙ Direction of Wireline View to Nearest Tower



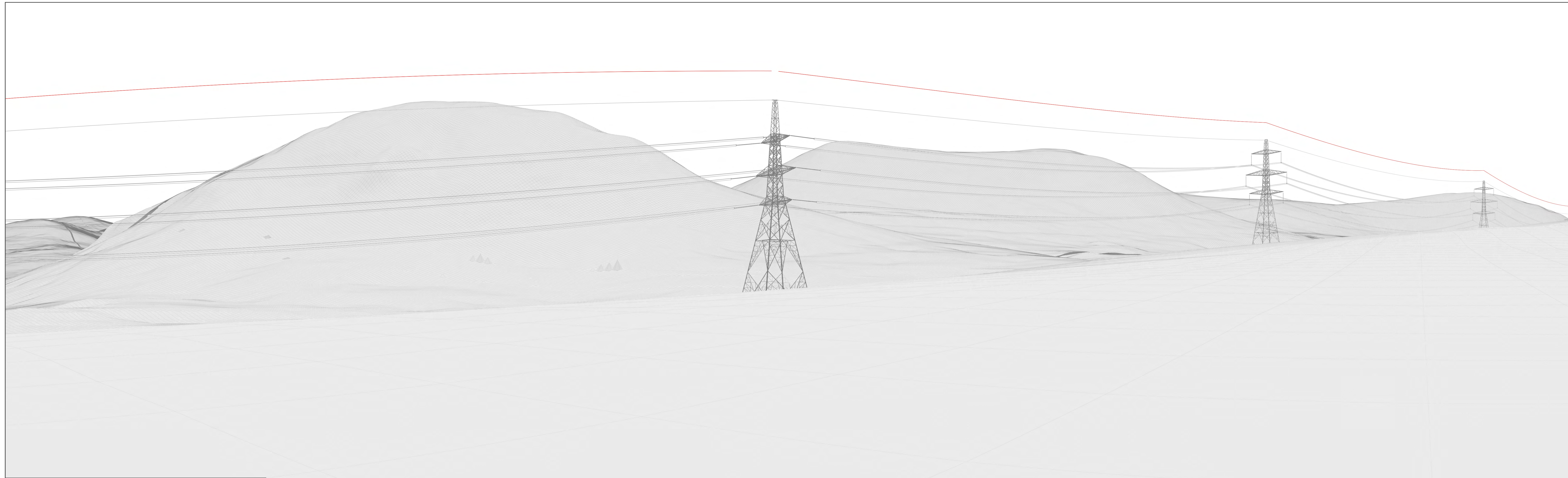
SCALE: 1:1500	VERSION: A01
SIZE: A3	DRAWN: WM
PROJECT: 0720281	CHECKED: NAO
DATE: 06/08/2025	APPROVED: KG

Volume 5 – Appendix 7.11 RVAA – Figure 1.13a
Residential Visual Amenity Location:
SD-02 West End



SD-02 West End Grid Reference: 256308 868873

PROJECTION: British National Grid
 OS25k and DTM © Landmark Information Group Limited and/or its Data Suppliers (All rights reserved 2010). Maxar, Microsoft



Wireline Drawing - Proposed Development Shown In Red
 - - - - Vertical Limit of Deviation: the maximum height of a tower above ground level

View flat at a comfortable arm's length

Volume 5 - Appendix 7.11 RVAA - Figure 1.13b
 Residential Visual Amenity Location : SD-02 West End
Beauly to Spittal OHL



OS reference: 256308 868873
 Eye Level: 230m AOD
 Direction of view: 322°
 Distance to Nearest Tower: 252 m

Horizontal field of view: 90° (cylindrical projection)
 Principal distance: 812.5mm
 Paper size: 841 x 297 mm
 Correct printed image size: 820 x 260 mm

