

Beauly to Spittal



Figure 6a
Meadow Pipit Breeding
Territories 2024 - Map 2

Key

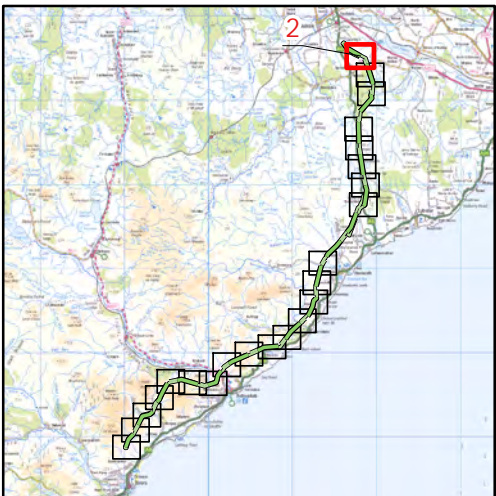
OHL Route Alignment and Tracks

- OHL Alignment
- Limit of Deviation for OHL (LoD)
- 500m buffer from LoD
- Tower
- Permanent access track
- Temporary access track
- No Access Areas - surveyed from public roads

Meadow pipit

Breeding Status

- Confirmed
- Probable
- Possible
- Non-breeding

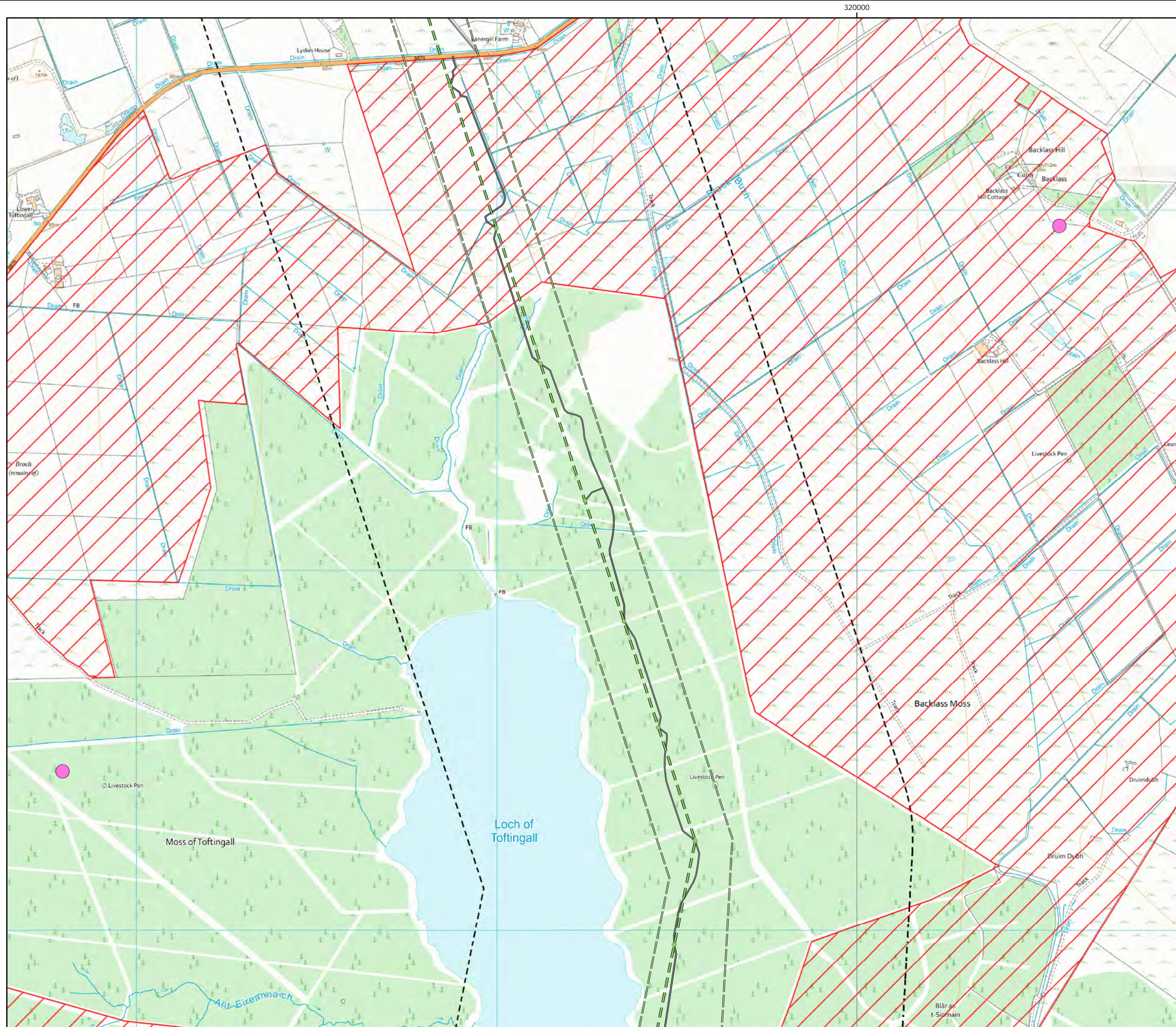


0 500
Meters

Scale @ A3:
1:10,000

North arrow and accreditation logos (UKAS, URAS)

© Crown copyright 2025. All rights reserved.
Ordnance survey licence number AC0000808122.

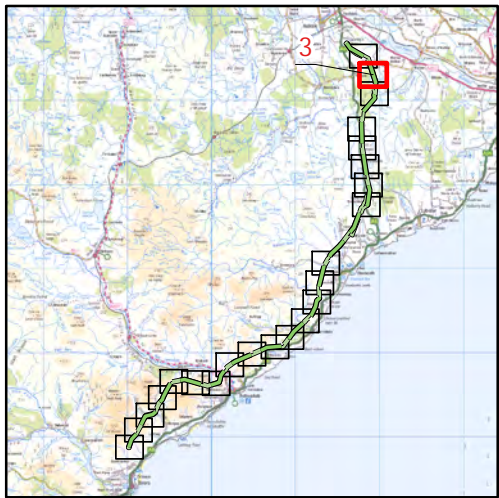


Beauly to Spittal



Figure 6a
Meadow Pipit Breeding
Territories 2024 - Map 3

- Key**
- OHL Route Alignment and Tracks**
- OHL Alignment
 - Limit of Deviation for OHL (LoD)
 - 500m buffer from LoD
 - Tower
 - Permanent access track
 - Temporary access track
 - No Access Areas - surveyed from public roads
- Meadow pipit**
- Breeding Status**
- Confirmed
 - Probable
 - Possible
 - Non-breeding



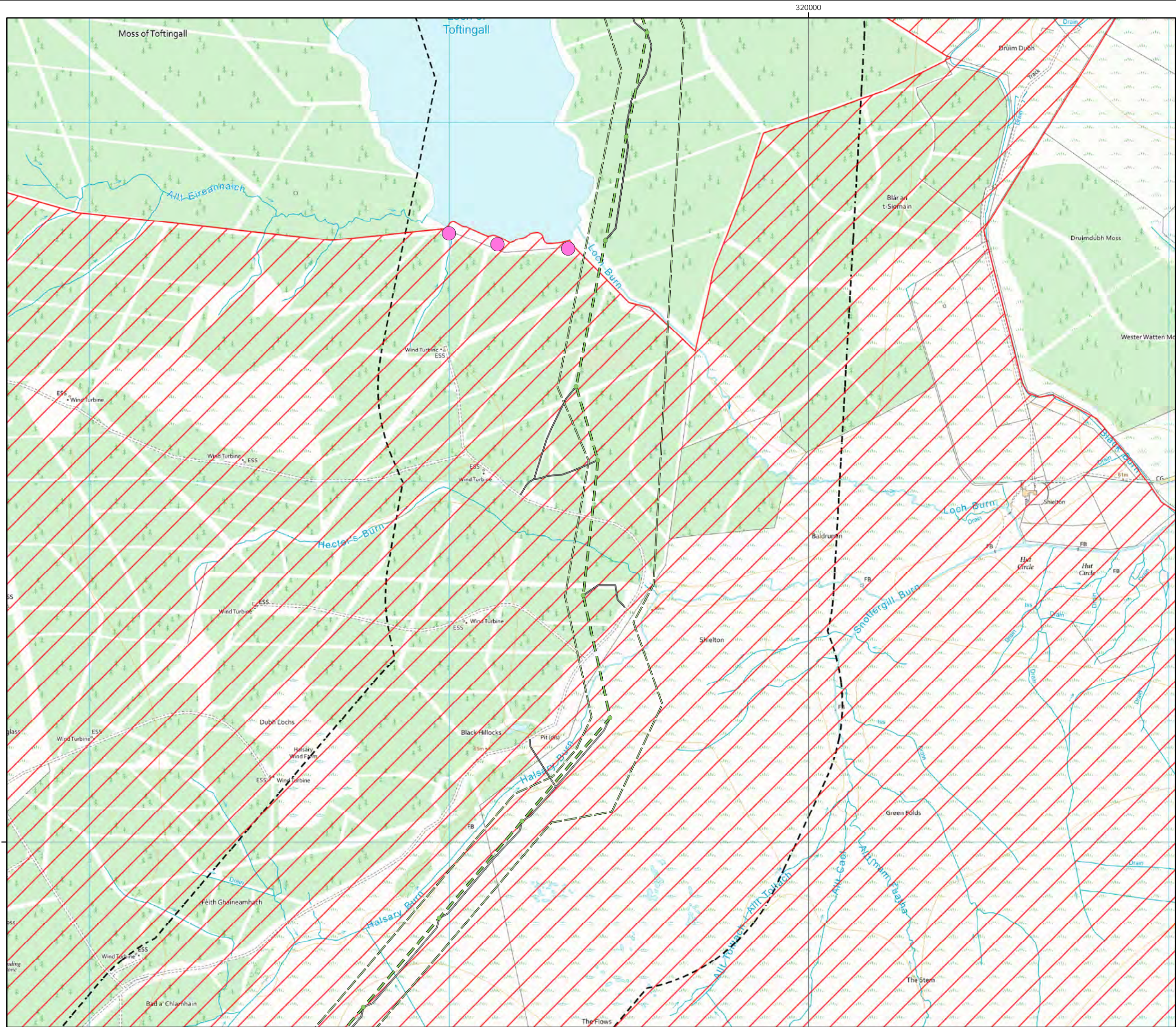
0 500
Meters



Scale @ A3:
1:10,000



© Crown copyright 2025. All rights reserved.
Ordnance survey licence number AC0000808122.

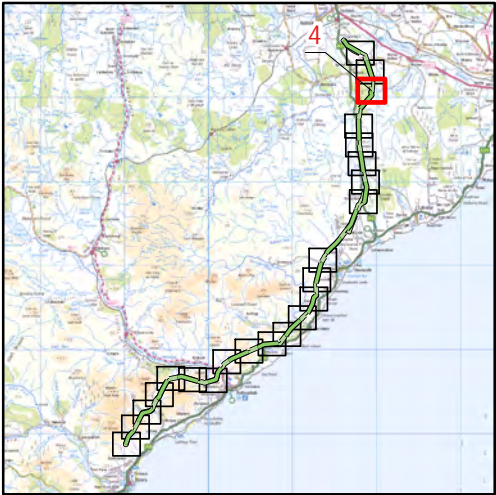


Beauly to Spittal



Figure 6a
Meadow Pipit Breeding
Territories 2024 - Map 4

- Key**
- OHL Route Alignment and Tracks**
- OHL Alignment
 - Limit of Deviation for OHL (LoD)
 - 500m buffer from LoD
 - Tower
 - Permanent access track
 - Temporary access track
 - No Access Areas - surveyed from public roads
- Meadow pipit**
- Breeding Status**
- Confirmed
 - Probable
 - Possible
 - Non-breeding



0 500
Meters



Scale @ A3:
1:10,000



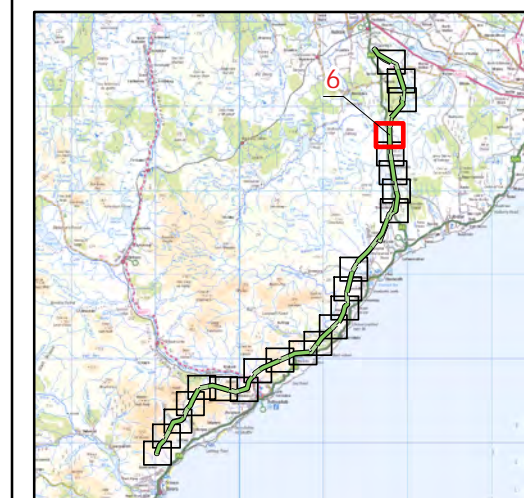
© Crown copyright 2025. All rights reserved.
Ordnance survey licence number AC0000808122.

Beauly to Spittal

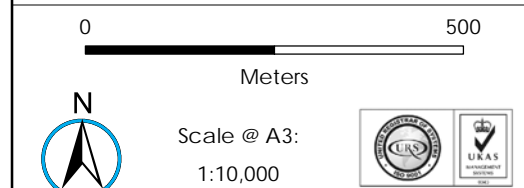


Figure 6a
Meadow Pipit Breeding
Territories 2024 - Map 6

- Key**
- OHL Route Alignment and Tracks**
- OHL Alignment
 - Limit of Deviation for OHL (LoD)
 - 500m buffer from LoD
 - Tower
 - Temporary access track
 - No Access Areas - surveyed from public roads
- Meadow pipit**
- Breeding Status**
- Confirmed
 - Probable
 - Possible
 - Non-breeding

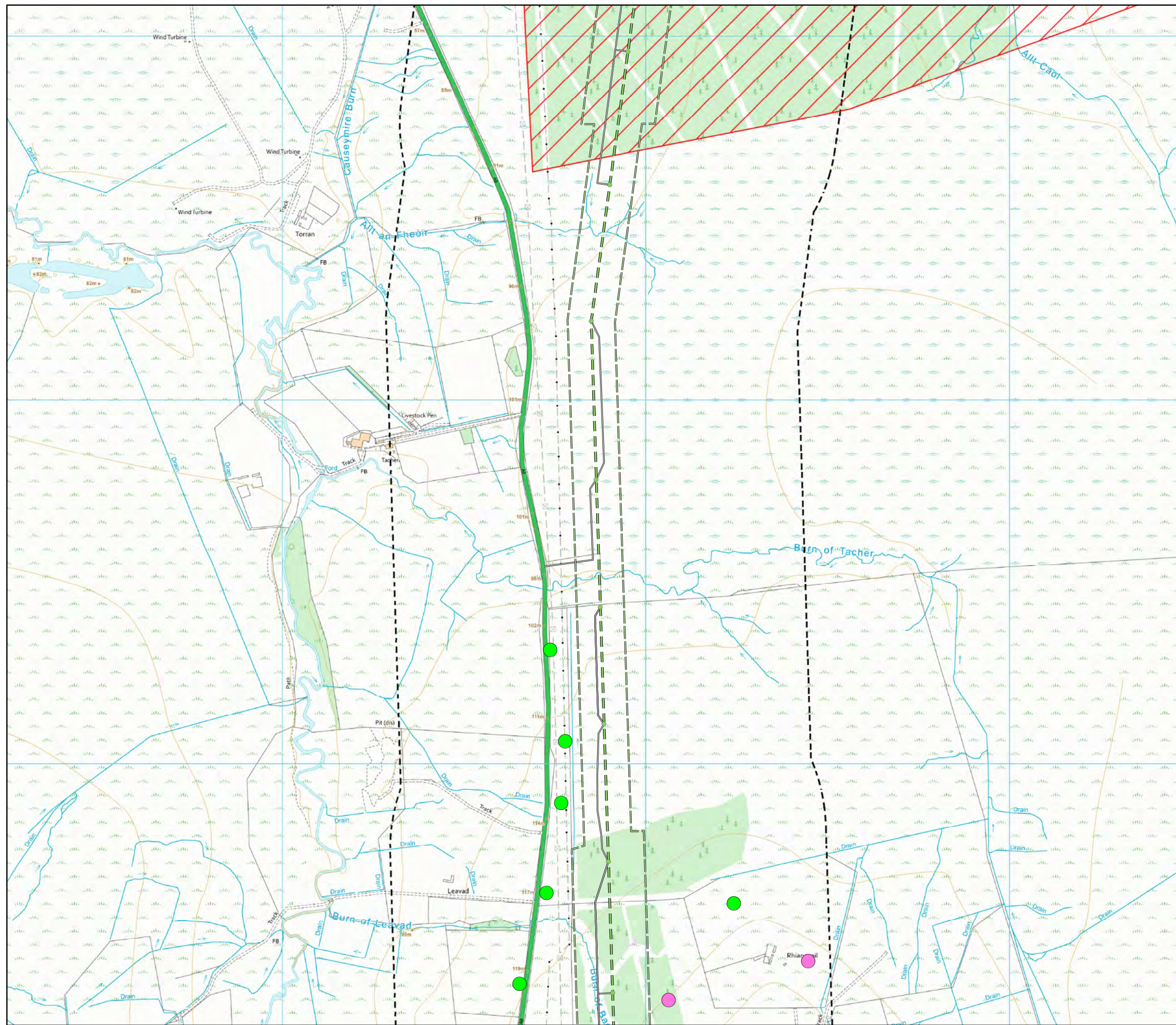


atmos
CONSULTING



© Crown copyright 2025. All rights reserved.
Ordnance survey licence number AC0000808122.

20/01/2025 79300/OR/094d
Drawn by: AF Checked by: TH Approved by: JW

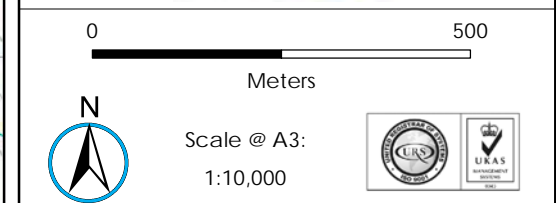
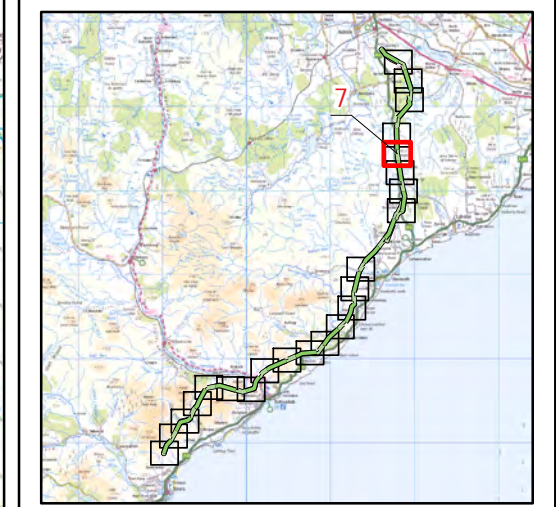


Beauly to Spittal

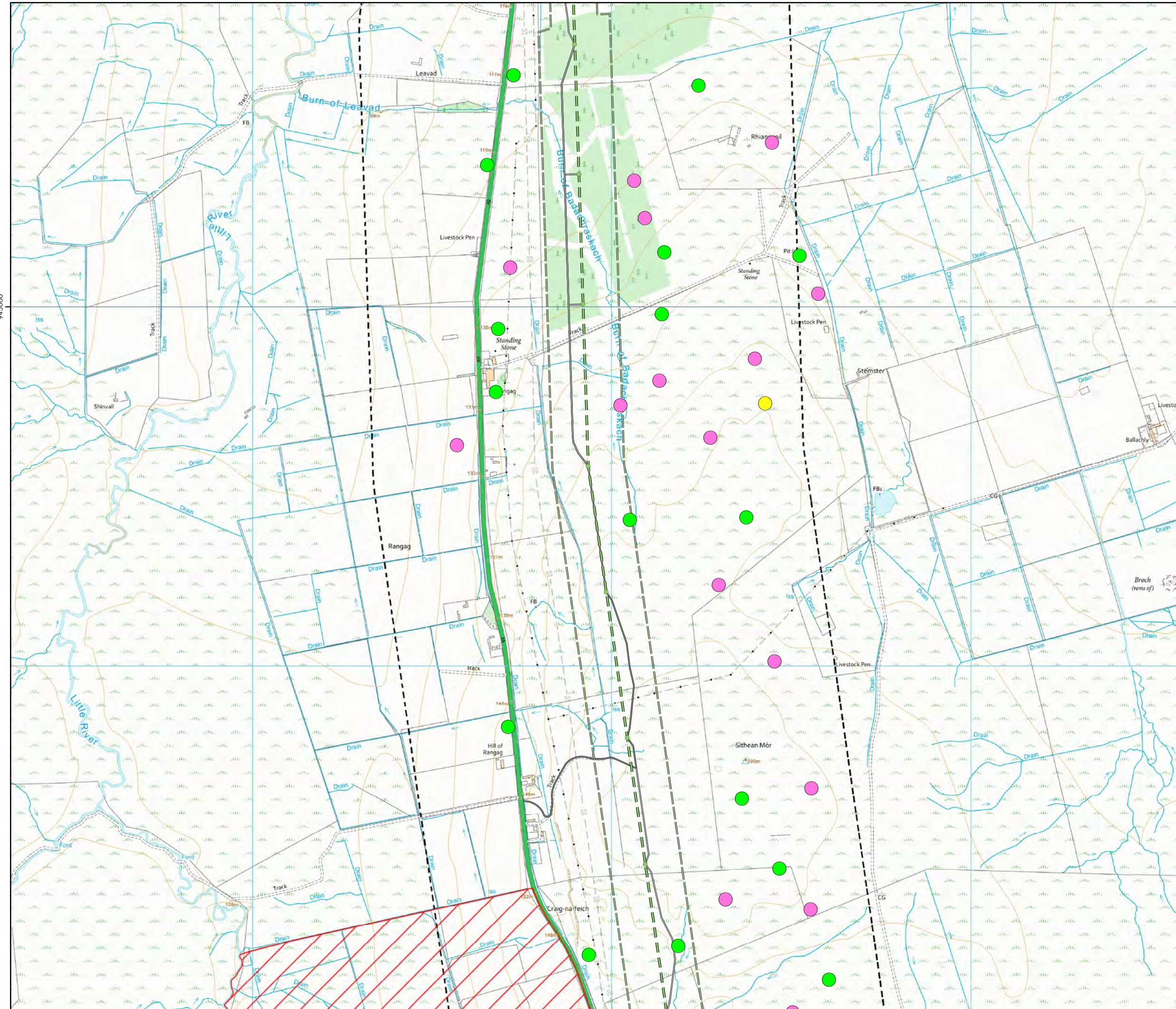


Figure 6a
Meadow Pipit Breeding
Territories 2024 - Map 7

- Key**
- OHL Route Alignment and Tracks**
- OHL Alignment
 - Limit of Deviation for OHL (LoD)
 - 500m buffer from LoD
 - Tower
 - Permanent access track
 - Temporary access track
 - No Access Areas - surveyed from public roads
- Meadow pipit**
- Breeding Status**
- Confirmed
 - Probable
 - Possible
 - Non-breeding



© Crown copyright 2025. All rights reserved.
Ordnance survey licence number AC0000808122.

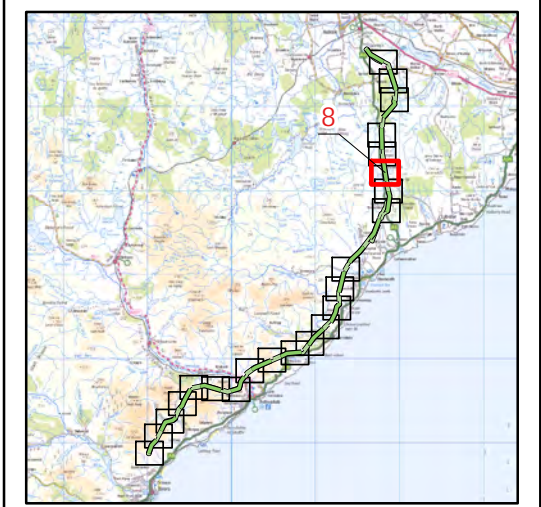


Beauly to Spittal



Figure 6a
Meadow Pipit Breeding
Territories 2024 - Map 8

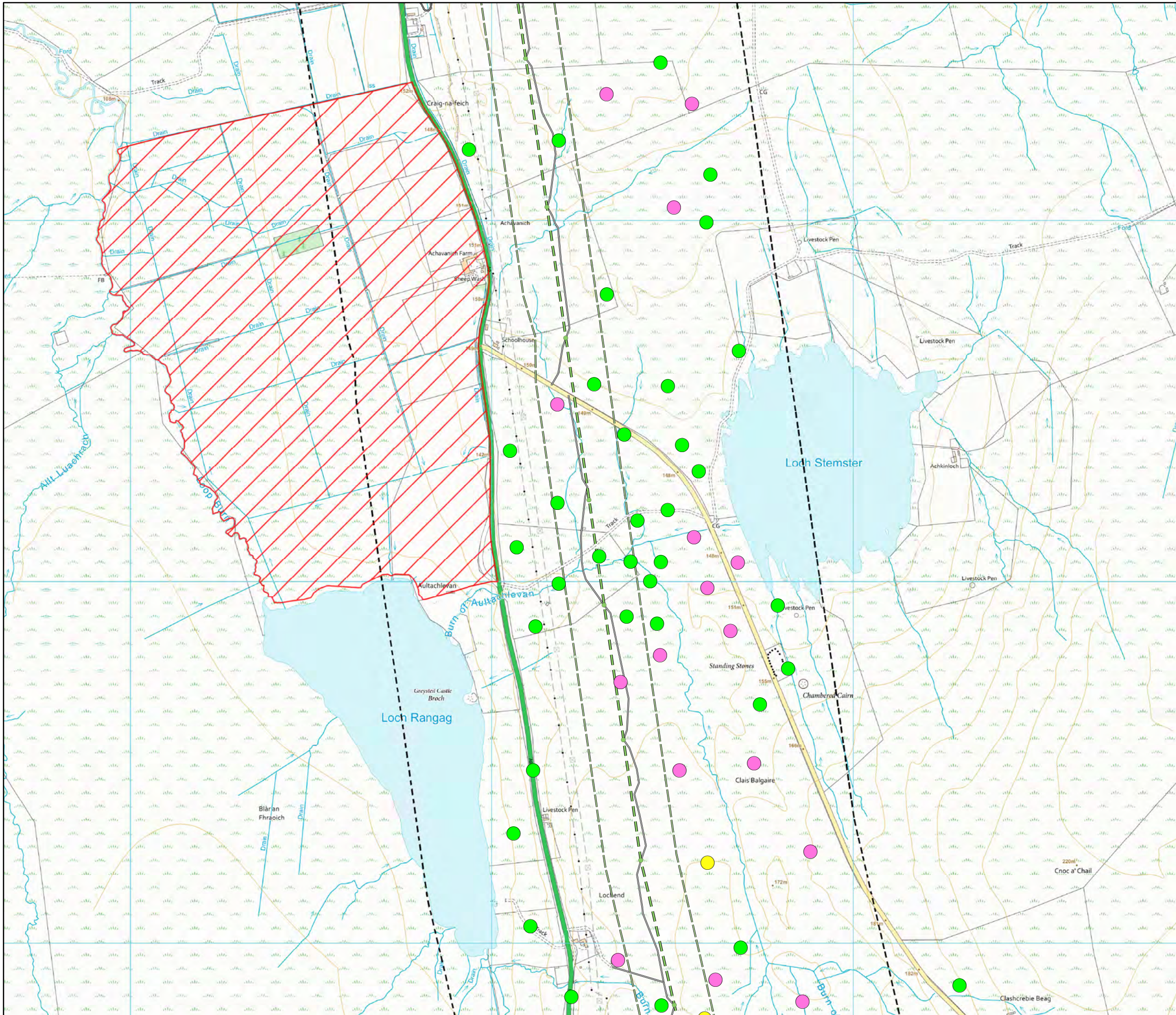
- Key**
- OHL Route Alignment and Tracks**
- OHL Alignment
 - Limit of Deviation for OHL (LoD)
 - 500m buffer from LoD
 - Tower
 - Permanent access track
 - Temporary access track
 - No Access Areas - surveyed from public roads
- Meadow pipit**
- Breeding Status**
- Confirmed
 - Probable
 - Possible
 - Non-breeding

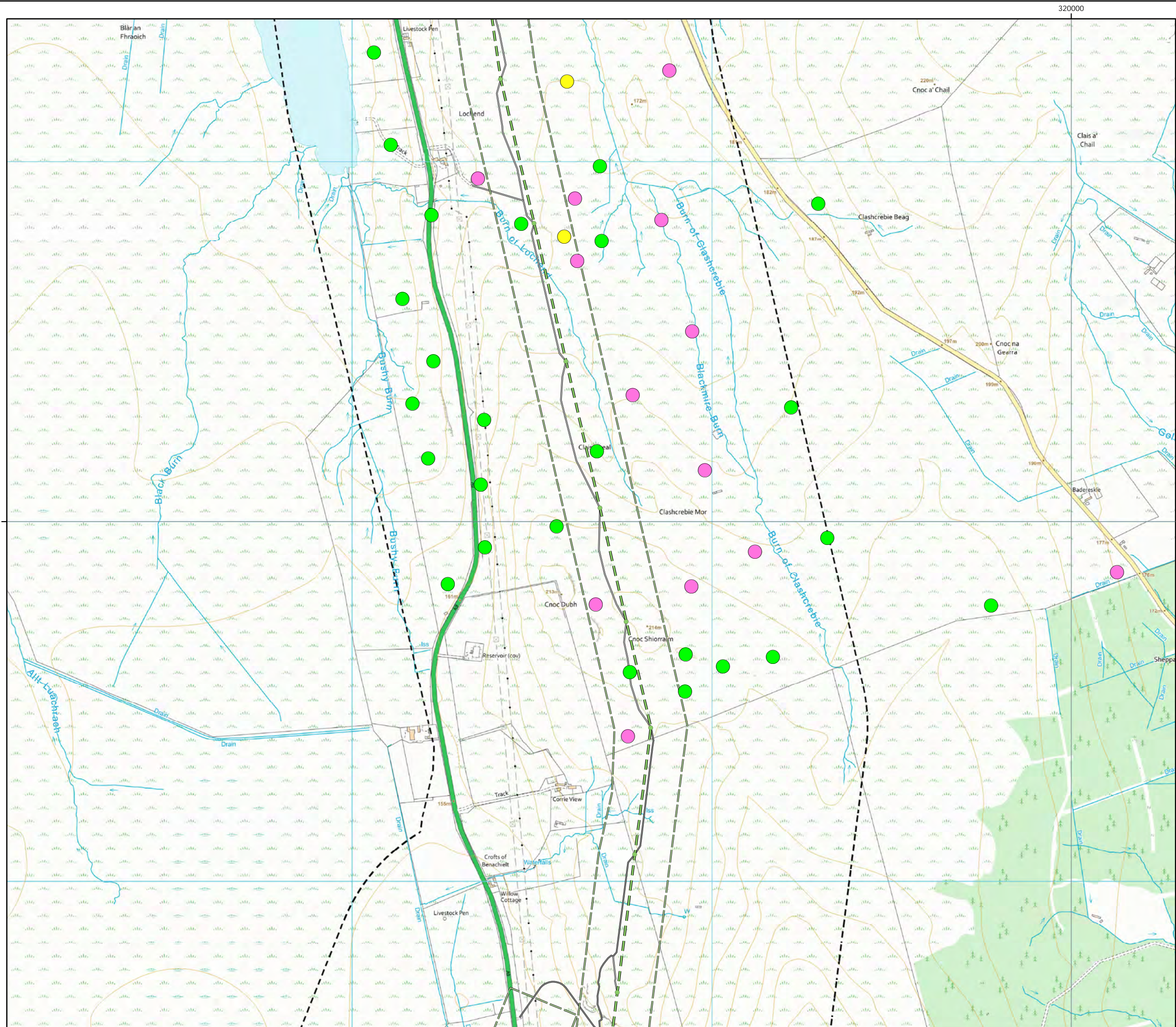


0 500
Meters

N
Scale @ A3:
1:10,000

© Crown copyright 2025. All rights reserved.
Ordnance survey licence number AC0000808122.



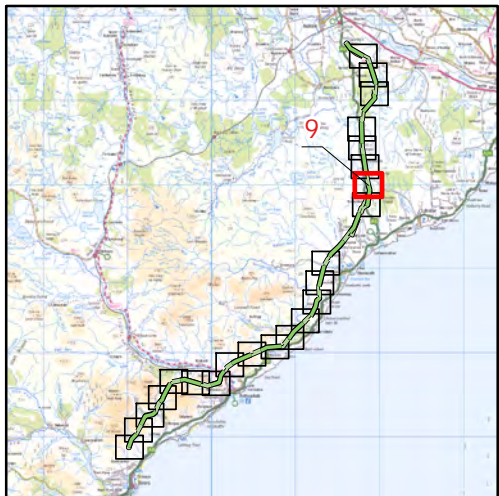


Beauly to Spittal



Figure 6a
Meadow Pipit Breeding
Territories 2024 - Map 9

- Key**
- OHL Route Alignment and Tracks**
- OHL Alignment
 - Limit of Deviation for OHL (LoD)
 - 500m buffer from LoD
 - Tower
 - Permanent access track
 - Temporary access track
- Meadow pipit**
- Breeding Status**
- Confirmed
 - Probable
 - Possible
 - Non-breeding



0 500
Meters

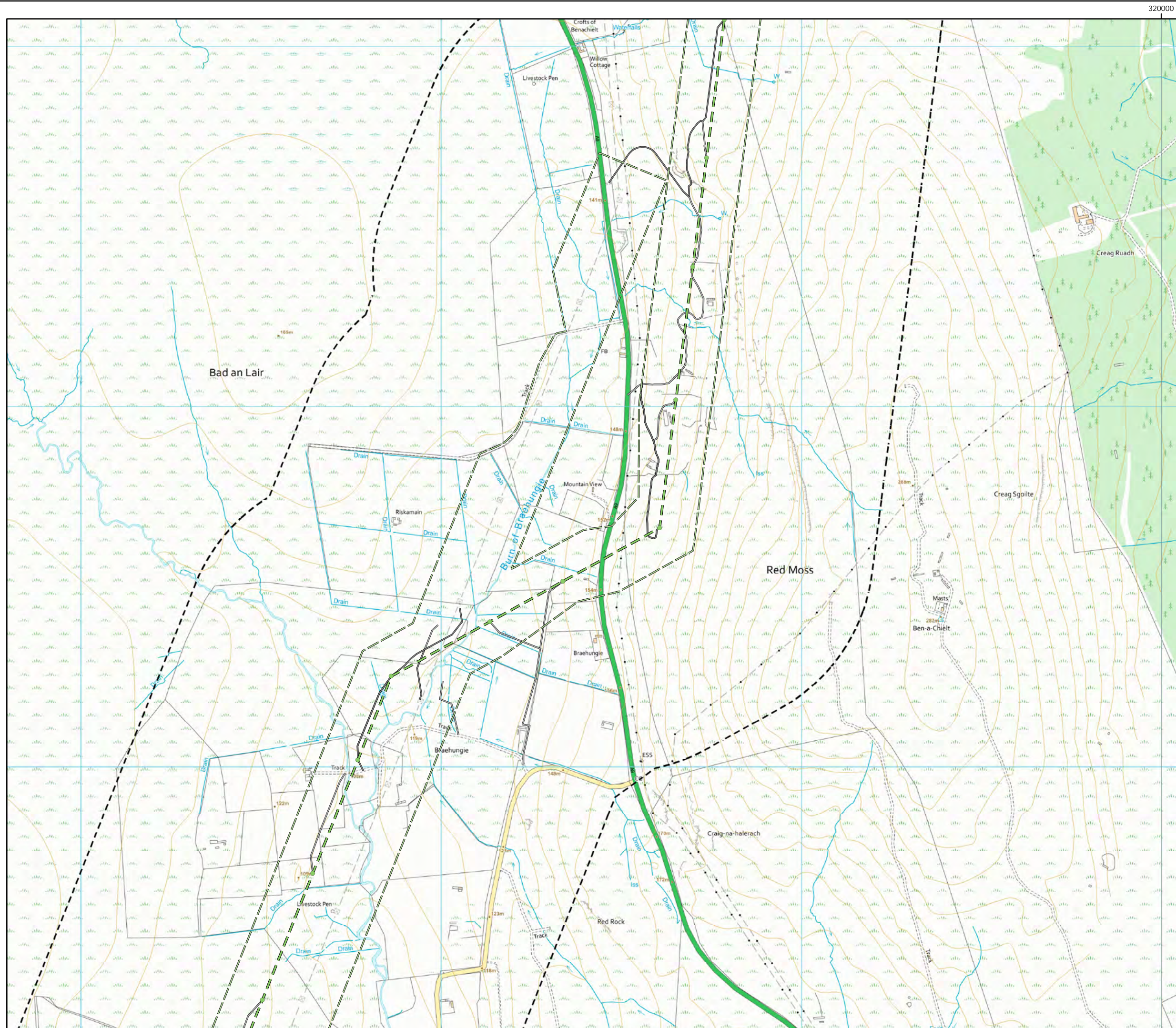


Scale @ A3:
1:10,000



© Crown copyright 2025. All rights reserved.
Ordnance survey licence number AC0000808122.

20/01/2025 79300/OR/094d
Drawn by: AF Checked by: TH Approved by: JW

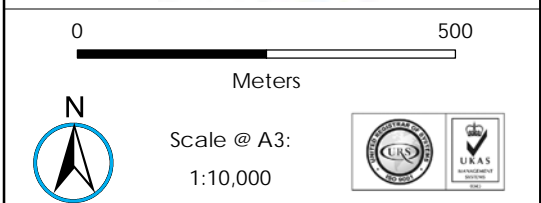
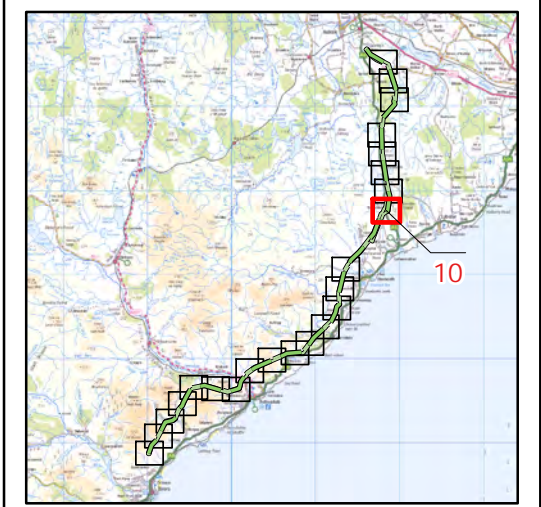


Beauly to Spittal

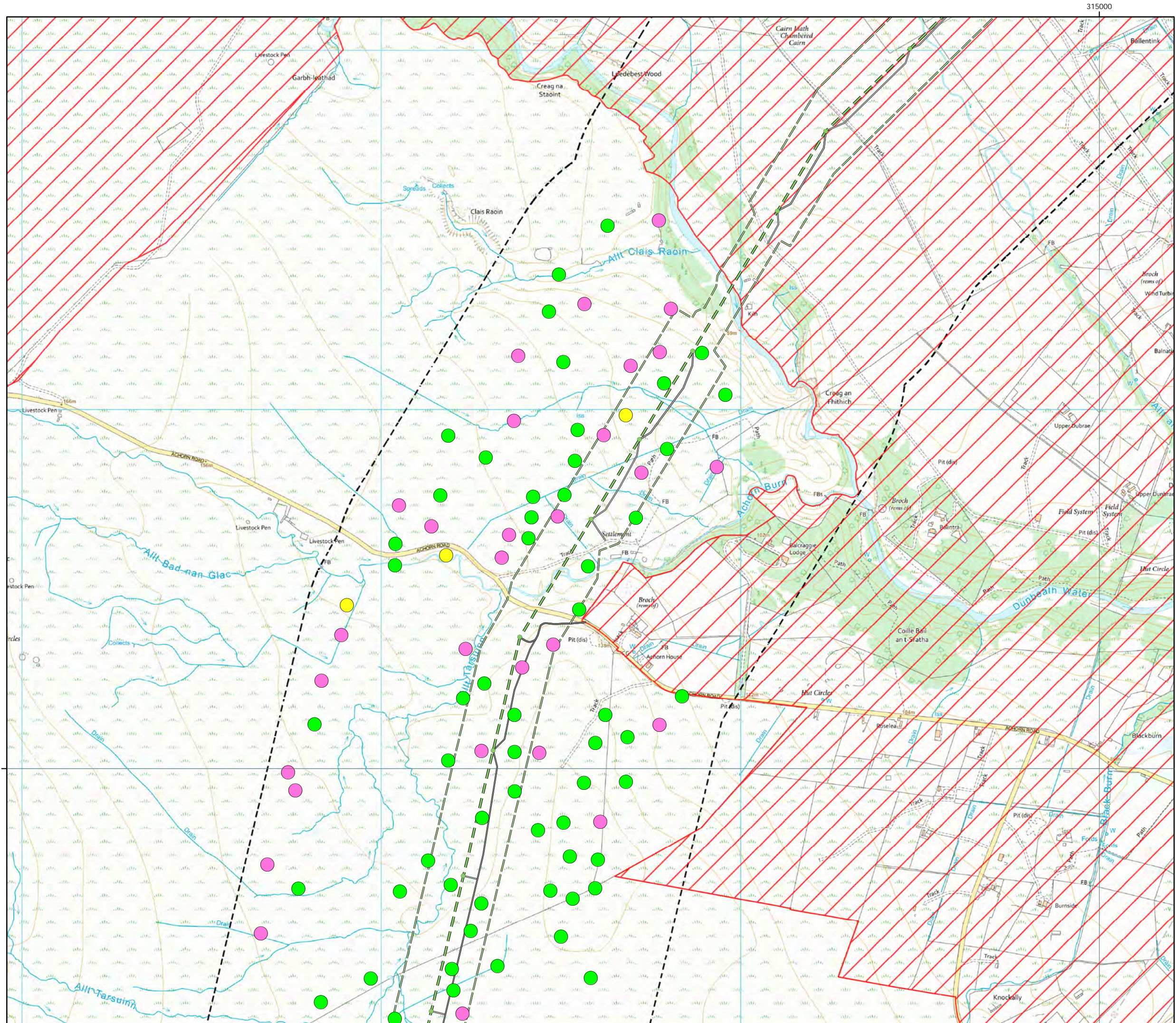


Figure 6a
Meadow Pipit Breeding
Territories 2024 - Map 10

- Key**
- OHL Route Alignment and Tracks**
- OHL Alignment
 - Limit of Deviation for OHL (LoD)
 - - - 500m buffer from LoD
 - Tower
 - Permanent access track
 - Temporary access track
- Meadow pipit**
- Breeding Status**
- Confirmed
 - Probable
 - Possible
 - Non-breeding



© Crown copyright 2025. All rights reserved.
Ordnance survey licence number AC0000808122.

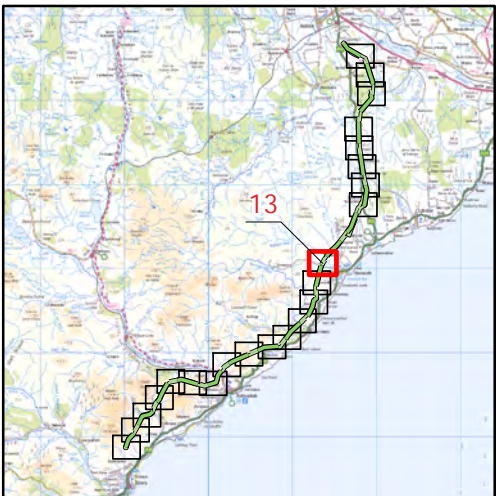


Beauly to Spittal



Figure 6a
Meadow Pipit Breeding
Territories 2024 - Map 13

- Key**
- OHL Route Alignment and Tracks**
- OHL Alignment
 - Limit of Deviation for OHL (LoD)
 - 500m buffer from LoD
 - Tower
 - Permanent access track
 - Temporary access track
 - No Access Areas - surveyed from public roads
- Meadow pipit**
- Breeding Status**
- Confirmed
 - Probable
 - Possible
 - Non-breeding



0 500
Meters



Scale @ A3:
1:10,000



© Crown copyright 2025. All rights reserved.
Ordnance survey licence number AC0000808122.

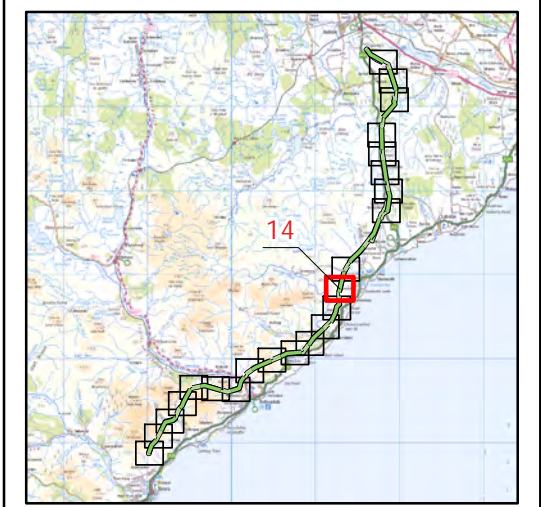
20/01/2025 79300/OR/094d
Drawn by: AF Checked by: TH Approved by: JW

Beauly to Spittal



Figure 6a
Meadow Pipit Breeding
Territories 2024 - Map 14

- Key**
- OHL Route Alignment and Tracks**
- OHL Alignment
 - Limit of Deviation for OHL (LoD)
 - 500m buffer from LoD
 - Tower
 - Permanent access track
 - Temporary access track
 - No Access Areas - surveyed from public roads
- Meadow pipit**
- Breeding Status**
- Confirmed
 - Probable
 - Possible
 - Non-breeding



0500

Meters

N

Scale @ A3:
1:10,000

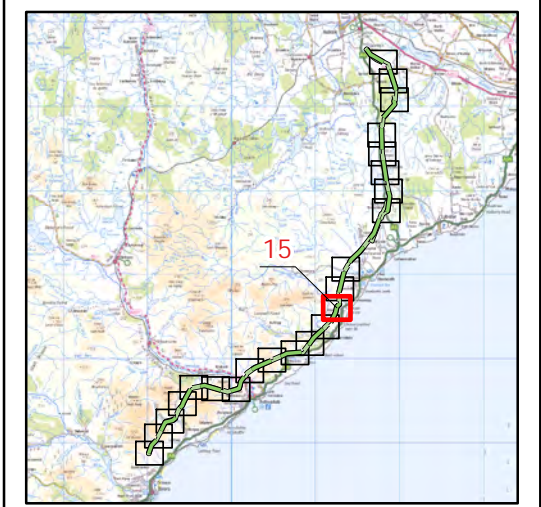
© Crown copyright 2025. All rights reserved.
Ordnance survey licence number AC0000808122.

Beauly to Spittal



Figure 6a
Meadow Pipit Breeding
Territories 2024 - Map 15

- Key**
- OHL Route Alignment and Tracks**
- OHL Alignment
 - Limit of Deviation for OHL (LoD)
 - 500m buffer from LoD
 - Tower
 - Permanent access track
 - Temporary access track
 - No Access Areas - surveyed from public roads
- Meadow pipit**
- Breeding Status**
- Confirmed
 - Probable
 - Possible
 - Non-breeding



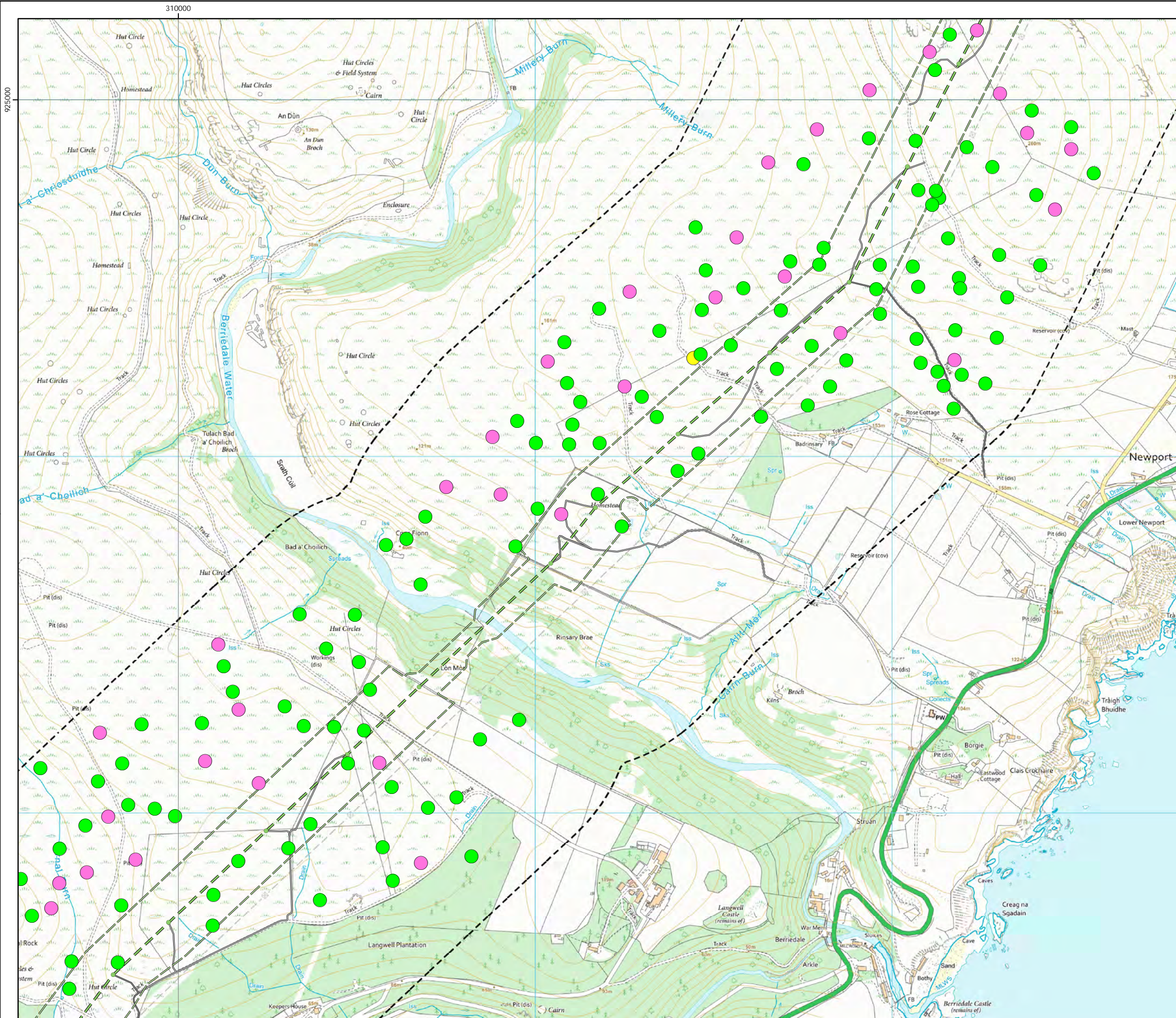
0500

Meters

N

Scale @ A3:
1:10,000

© Crown copyright 2025. All rights reserved.
Ordnance survey licence number AC0000808122.

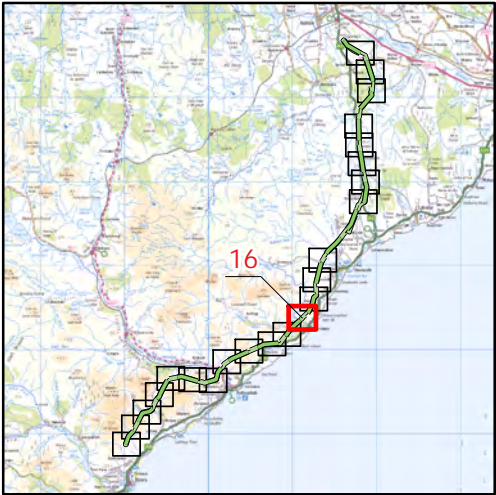


Beauly to Spittal



Figure 6a
Meadow Pipit Breeding
Territories 2024 - Map 16

- Key**
- OHL Route Alignment and Tracks**
- OHL Alignment
 - Limit of Deviation for OHL (LoD)
 - 500m buffer from LoD
 - Tower
 - Permanent access track
 - Temporary access track
- Meadow pipit**
- Breeding Status**
- Confirmed
 - Probable
 - Possible
 - Non-breeding



0 500
Meters

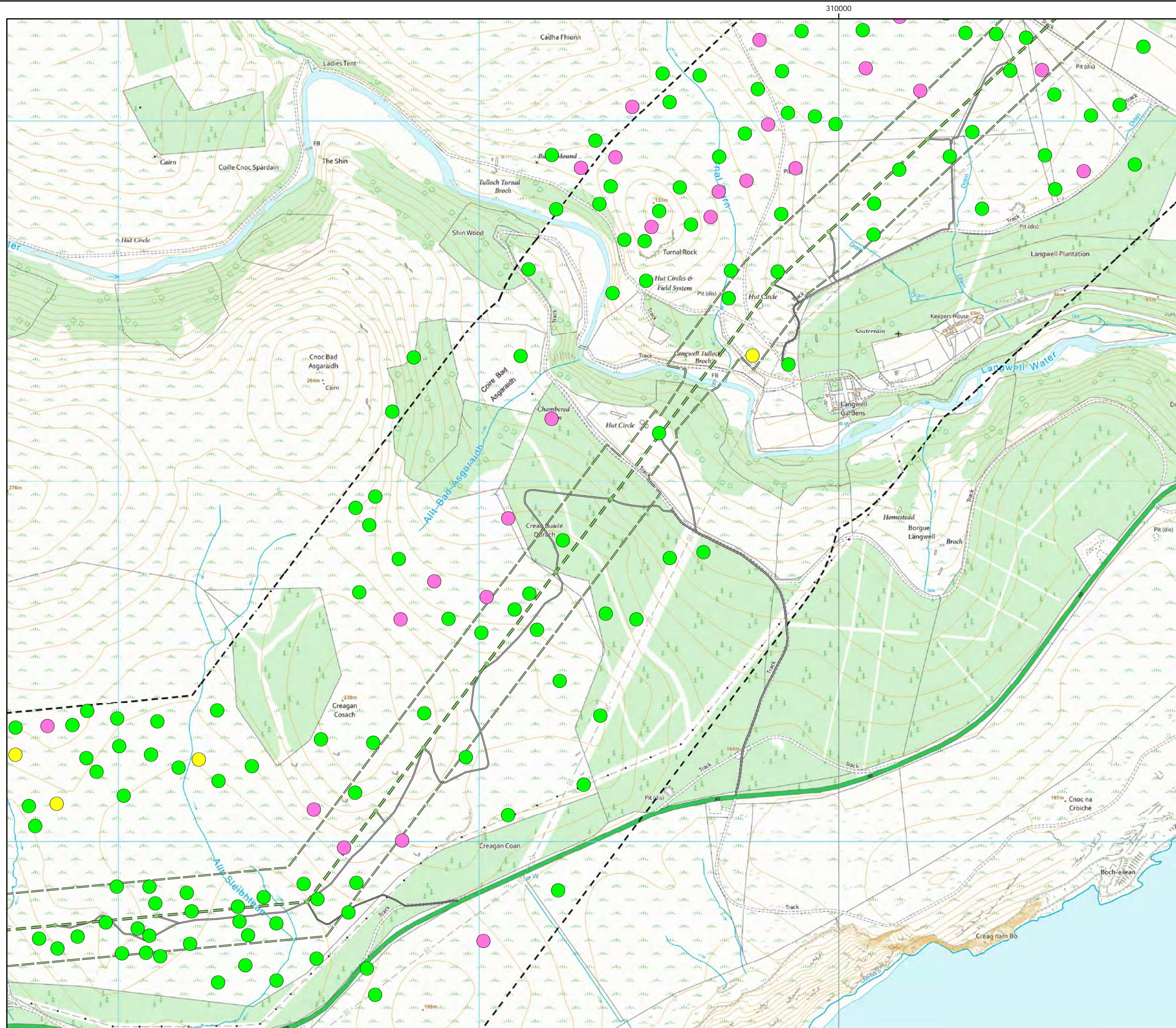


Scale @ A3:
1:10,000



© Crown copyright 2025. All rights reserved.
Ordnance survey licence number AC0000808122.

20/01/2025 79300/OR/094d
Drawn by: AF Checked by: TH Approved by: JW

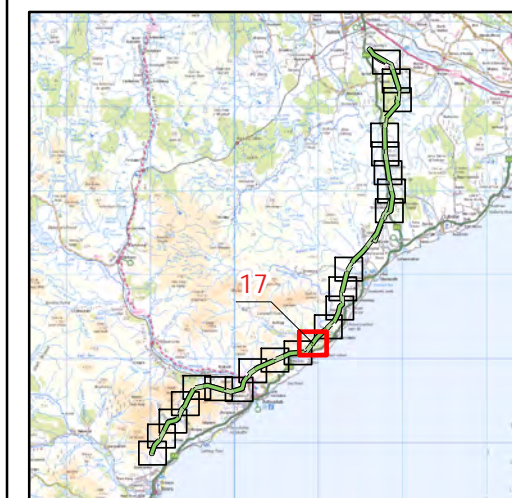


Beauly to Spittal



Figure 6a
Meadow Pipit Breeding
Territories 2024 - Map 17

- Key**
- OHL Route Alignment and Tracks**
- OHL Alignment
 - Limit of Deviation for OHL (LoD)
 - - - 500m buffer from LoD
 - Tower
 - Permanent access track
 - Temporary access track
- Meadow pipit**
- Breeding Status**
- Confirmed
 - Probable
 - Possible
 - Non-breeding



atmos
CONSULTING

0 500
Meters



Scale @ A3:
1:10,000



© Crown copyright 2025. All rights reserved.
Ordnance survey licence number AC0000808122.

20/01/2025 79300/OR/094d
Drawn by: AF Checked by: TH Approved by: JW

Beauly to Spittal



Figure 6a
Meadow Pipit Breeding
Territories 2024 - Map 18

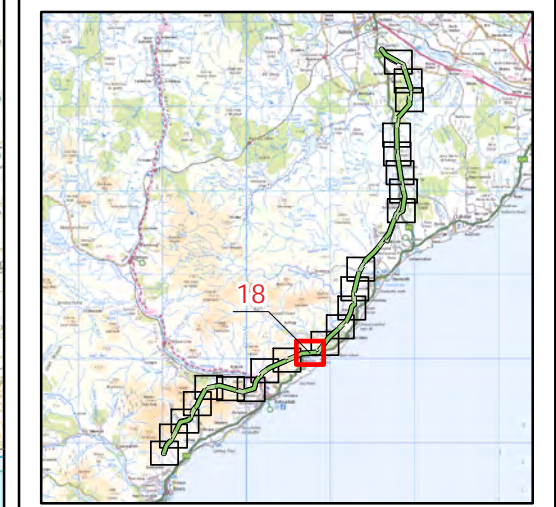
Key

OHL Route Alignment and Tracks

- OHL Alignment
- Limit of Deviation for OHL (LoD)
- 500m buffer from LoD
- Tower
- Permanent access track
- Temporary access track

Meadow pipit Breeding Status

- Confirmed
- Probable
- Possible
- Non-breeding

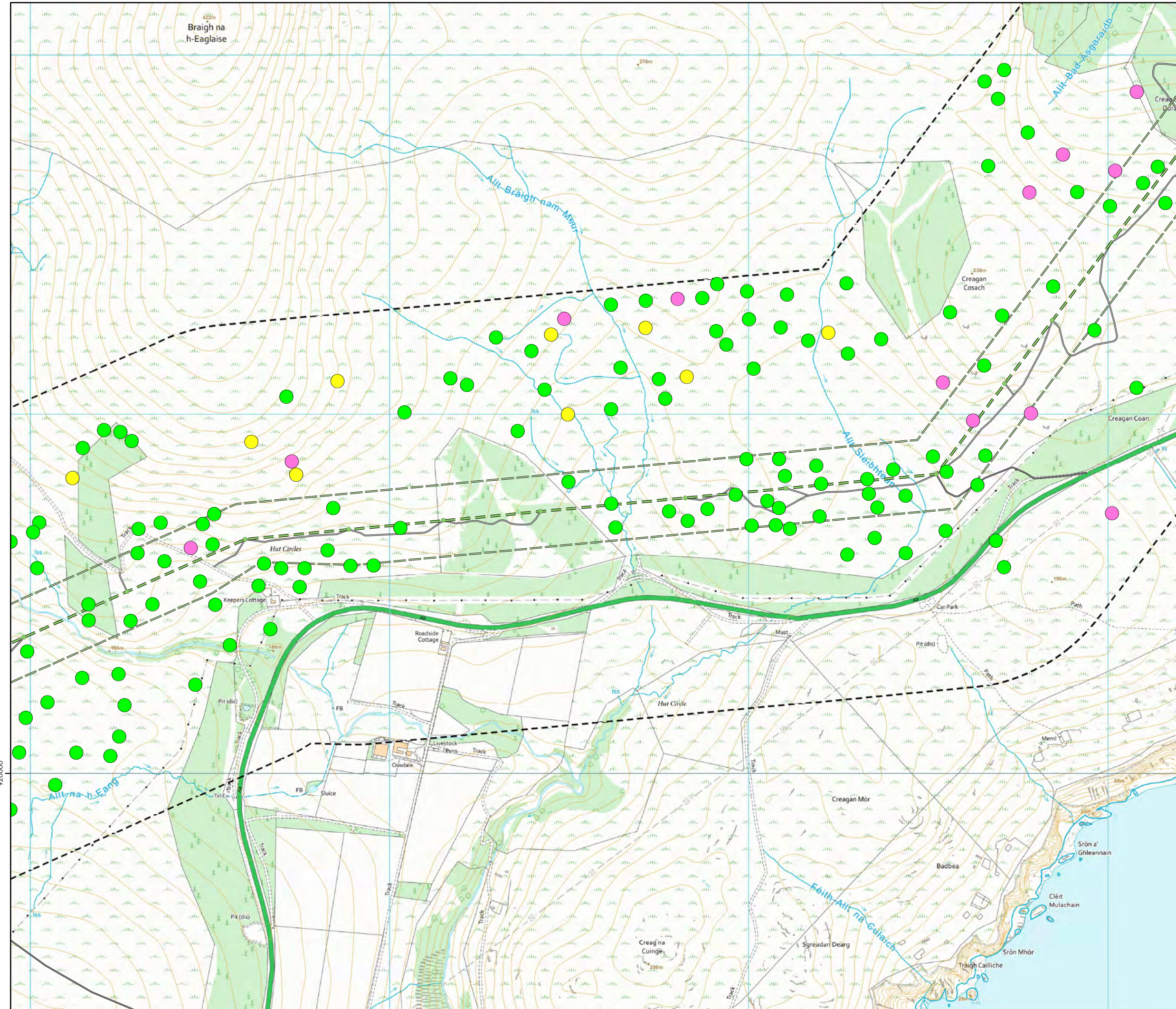


0 500
Meters

N

Scale @ A3:
1:10,000

© Crown copyright 2025. All rights reserved.
Ordnance survey licence number AC0000808122.

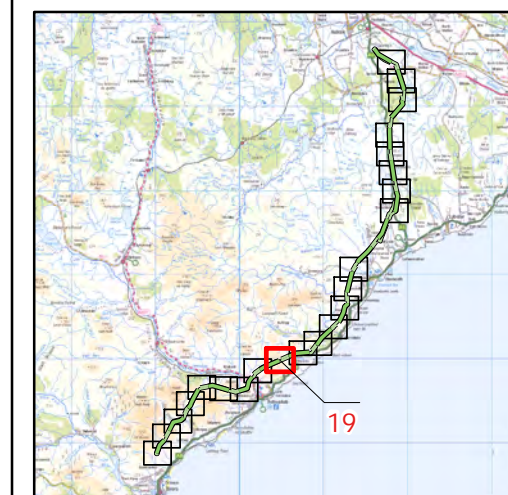


Beauly to Spittal

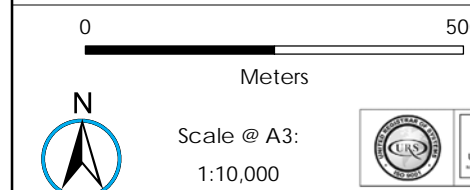


Figure 6a
Meadow Pipit Breeding
Territories 2024 - Map 19

- Key**
- OHL Route Alignment and Tracks**
- OHL Alignment
 - Limit of Deviation for OHL (LoD)
 - 500m buffer from LoD
 - Tower
 - Permanent access track
 - Temporary access track
- Meadow pipit**
- Breeding Status**
- Confirmed
 - Probable
 - Possible
 - Non-breeding

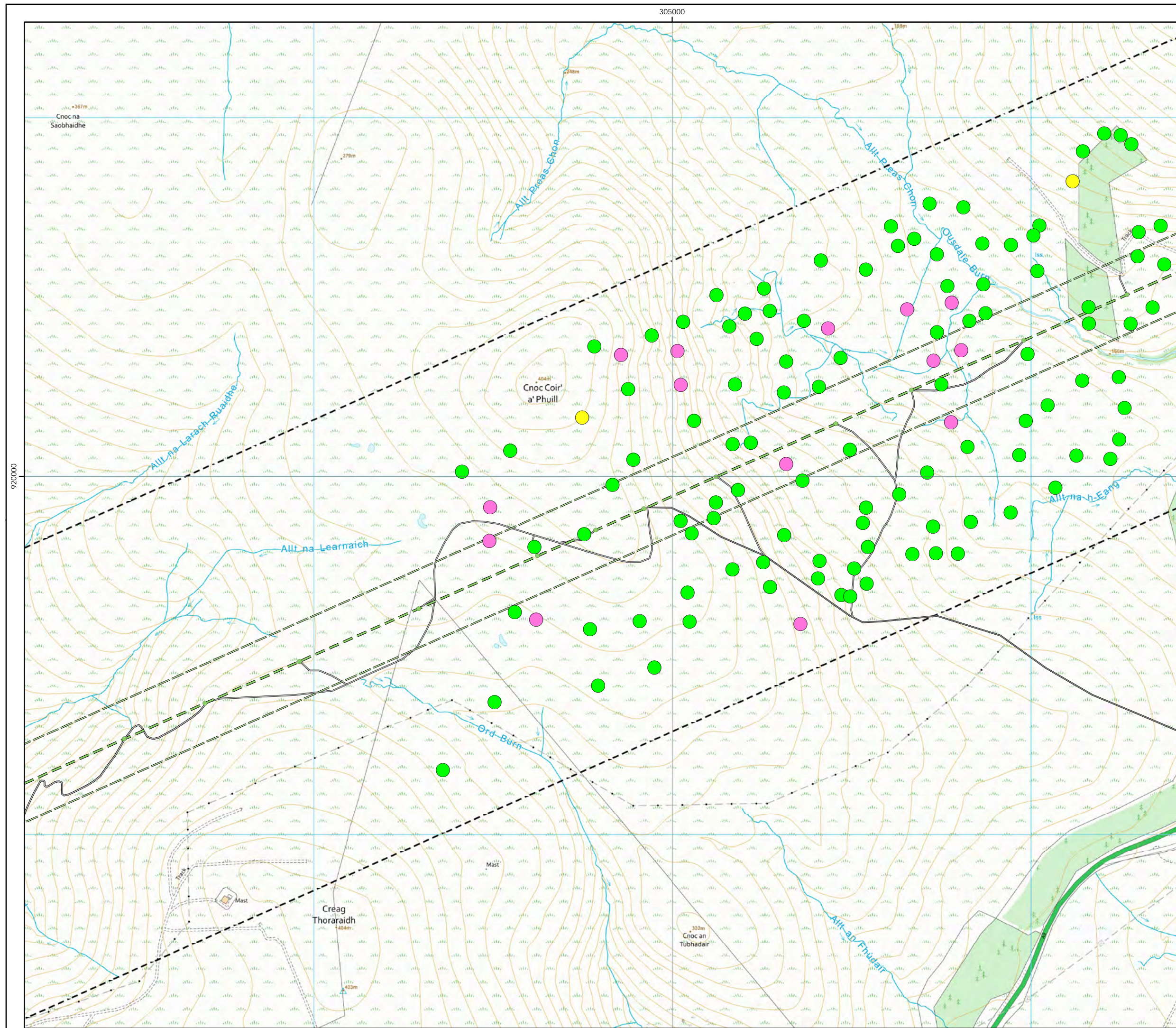


atmos
CONSULTING

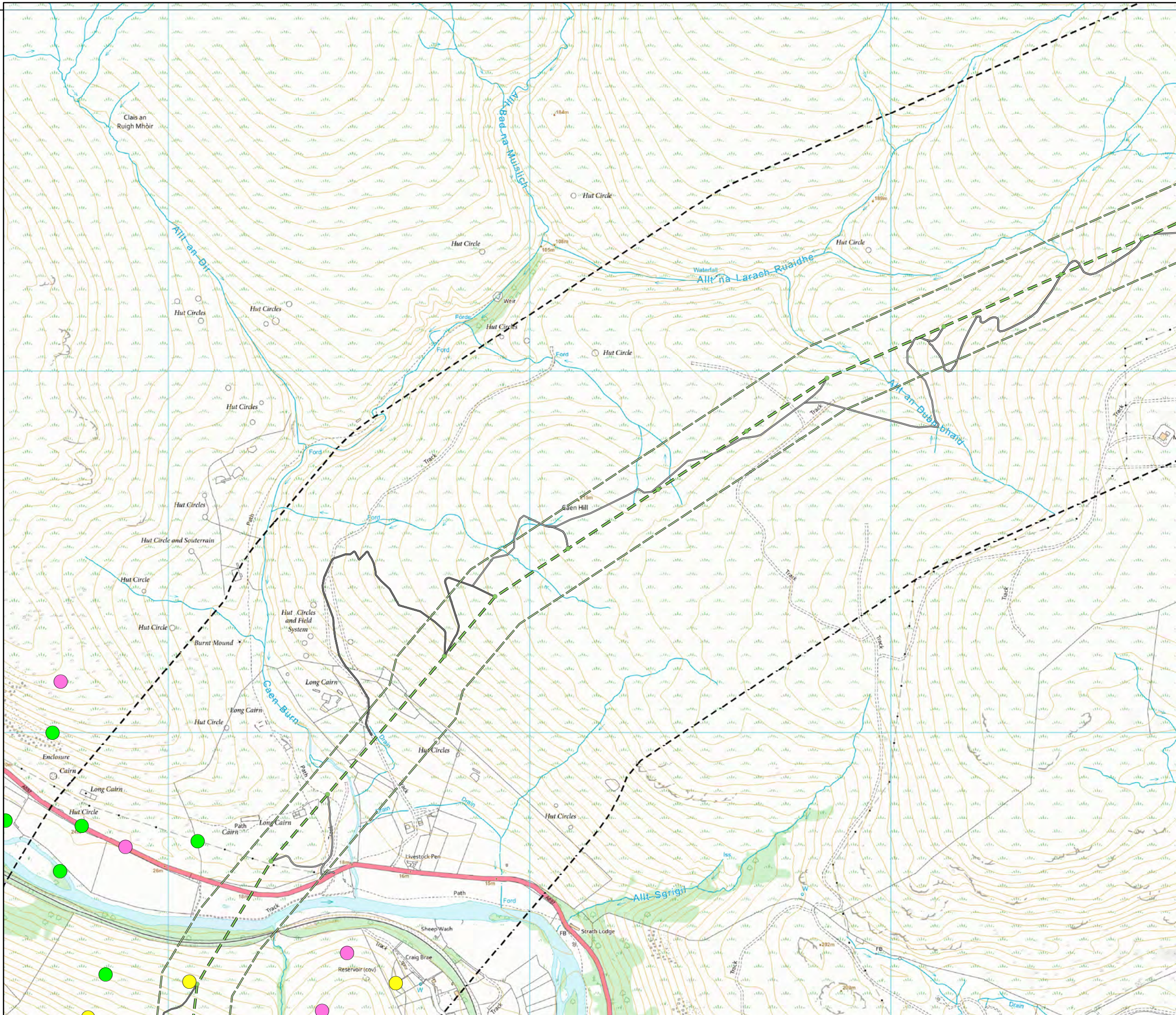


© Crown copyright 2025. All rights reserved.
Ordnance survey licence number AC0000808122.

20/01/2025 79300/OR/094d
Drawn by: AF Checked by: TH Approved by: JW



920000

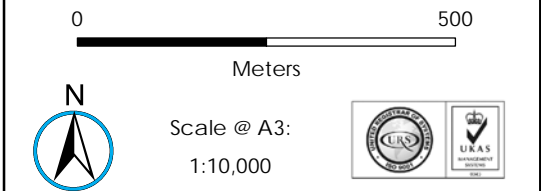
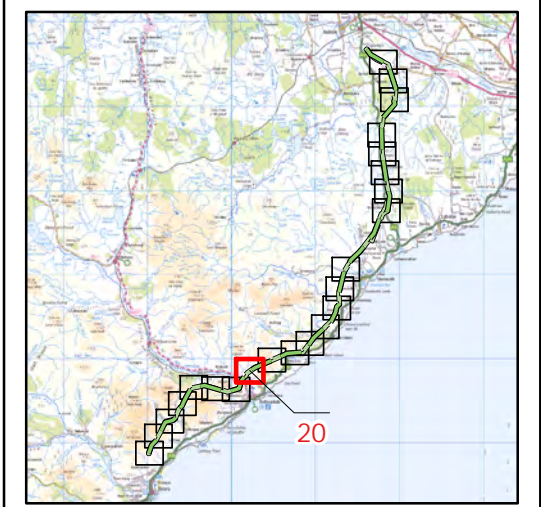


Beaulieu to Spittal



Figure 6a
Meadow Pipit Breeding
Territories 2024 - Map 20

- Key**
- OHL Route Alignment and Tracks**
- OHL Alignment
 - Limit of Deviation for OHL (LoD)
 - 500m buffer from LoD
 - Tower
 - Permanent access track
 - Temporary access track
- Meadow pipit Breeding Status**
- Confirmed
 - Probable
 - Possible
 - Non-breeding



© Crown copyright 2025. All rights reserved.
Ordnance survey licence number AC0000808122.