

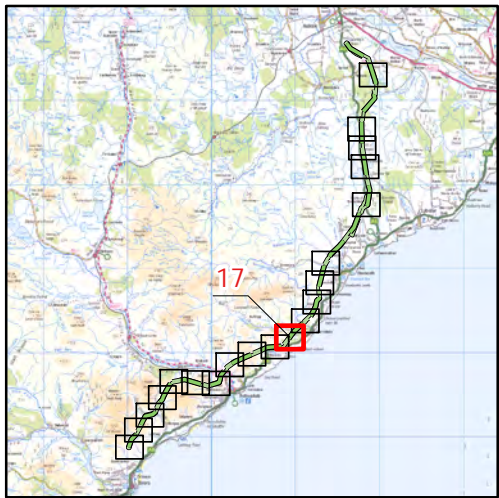
Beaulieu to Spittal



Figure 6b  
Skylark Breeding  
Territories - 2024 Map 17

- Key**
- OHL Route Alignment and Tracks**
- OHL Alignment
  - Limit of Deviation for OHL (LoD)
  - 500m buffer from Limit of deviation
  - Tower
  - Permanent access track
  - Temporary access track

- Skylark**
- Breeding Status**
- Confirmed
  - Probable
  - Possible
  - Non-breeding



0 500  
Meters



Scale @ A3:  
1:10,000



© Crown copyright 2025. All rights reserved.  
Ordnance survey licence number AC0000808122.

20/01/2025 79300/OR/094e  
Drawn by: AF Checked by: TH Approved by: JW



Beauly to Spittal



Figure 6b  
Skylark Breeding  
Territories - 2024 Map 18

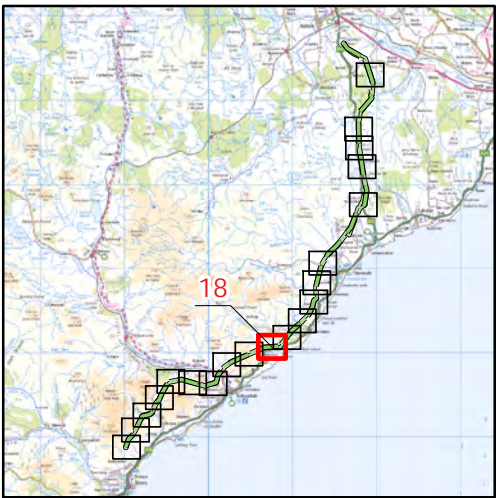
**Key**

**OHL Route Alignment and Tracks**

- OHL Alignment
- Limit of Deviation for OHL (LoD)
- 500m buffer from Limit of deviation
- Tower
- Permanent access track
- Temporary access track

**Skylark Breeding Status**

- Confirmed
- Probable
- Possible
- Non-breeding



0 500  
Meters

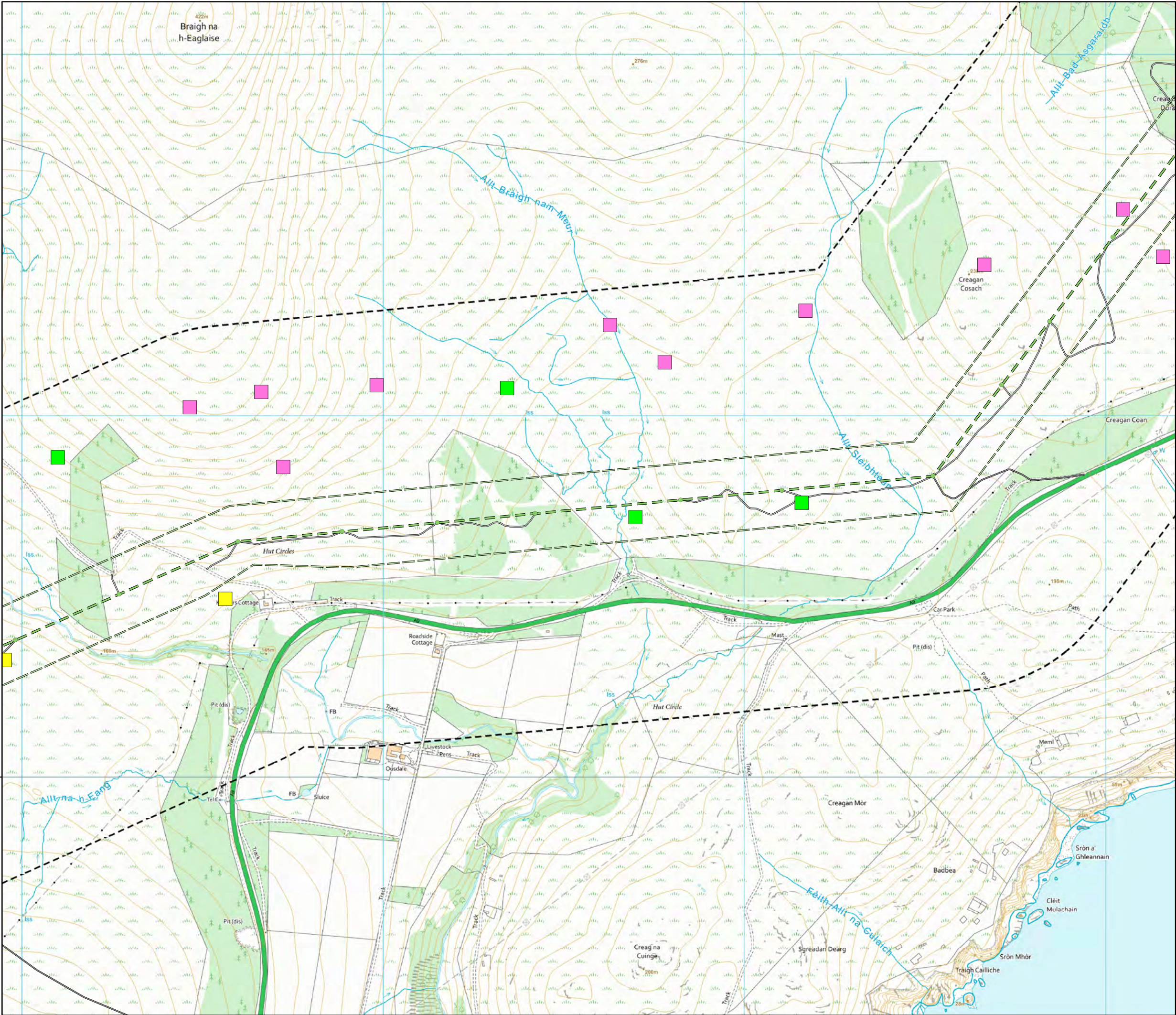


Scale @ A3:  
1:10,000



© Crown copyright 2025. All rights reserved.  
Ordnance survey licence number AC0000808122.

20/01/2025 79300/OR/094e  
Drawn by: AF Checked by: TH Approved by: JW





# Beauly to Spittal



Figure 6b  
Skylark Breeding  
Territories - 2024 Map 19

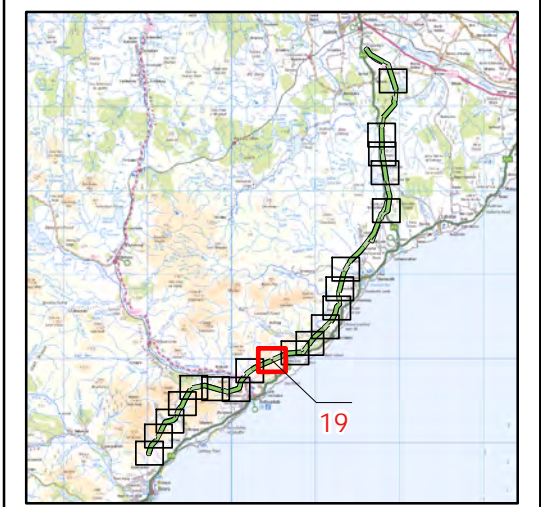
**Key**

**OHL Route Alignment and Tracks**

- OHL Alignment
- Limit of Deviation for OHL (LoD)
- 500m buffer from Limit of deviation
- Tower
- Permanent access track
- Temporary access track

**Skylark Breeding Status**

- Confirmed
- Probable
- Possible
- Non-breeding

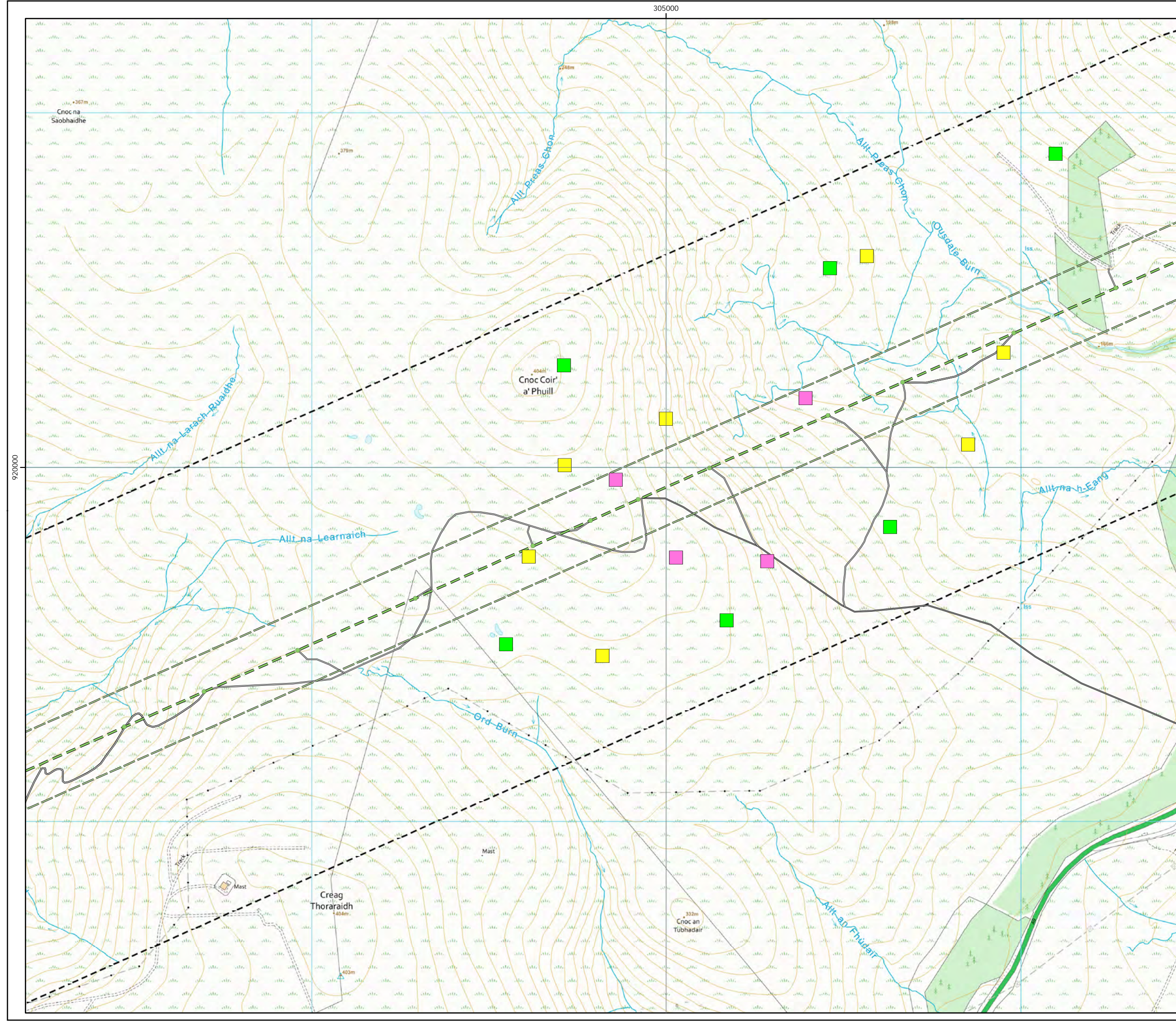


0 500 Meters

N

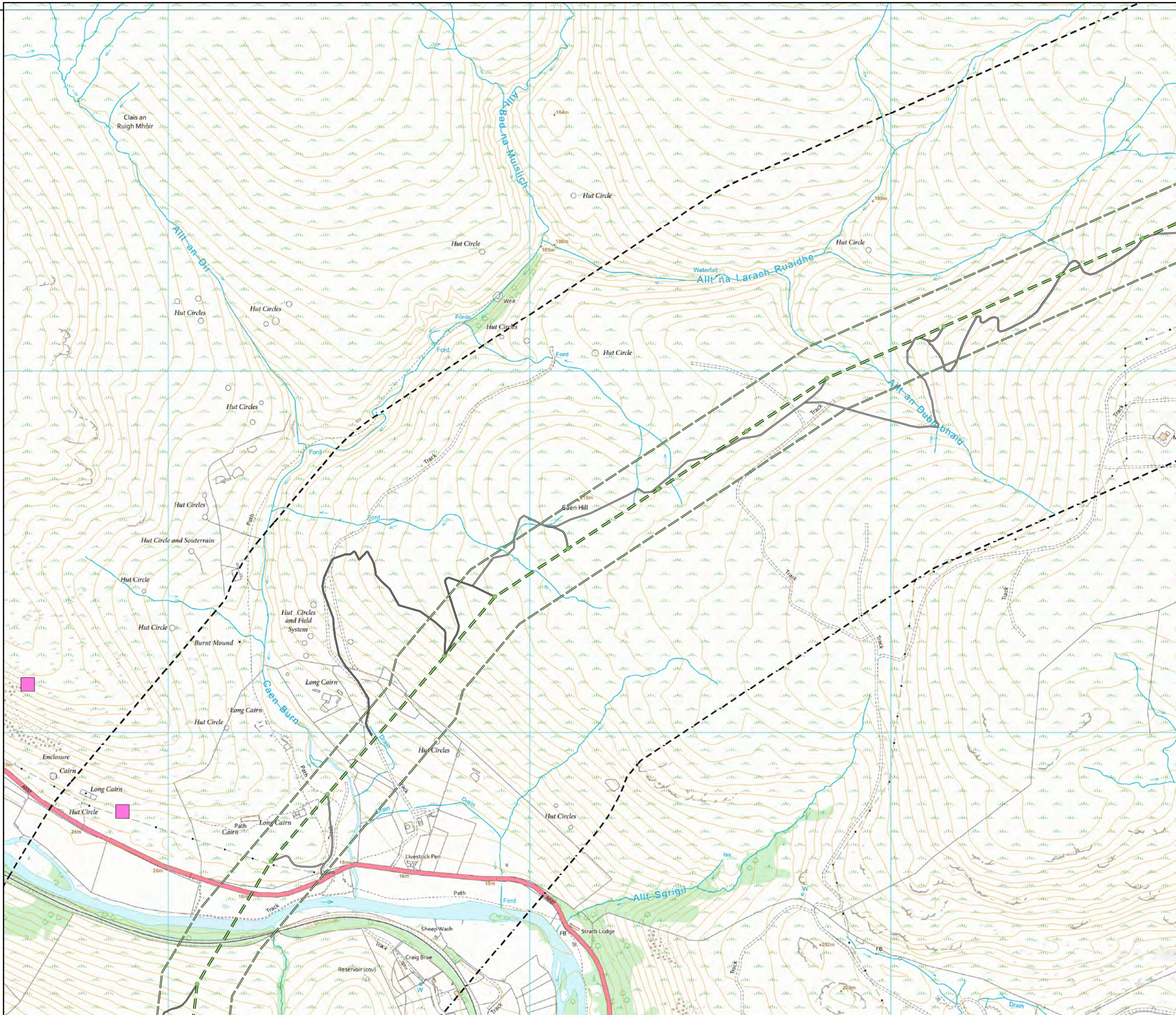
Scale @ A3:  
1:10,000

© Crown copyright 2025. All rights reserved.  
Ordnance survey licence number AC0000808122.





920000



# Beaulieu to Spittal



Figure 6b  
Skylark Breeding  
Territories - 2024 Map 20

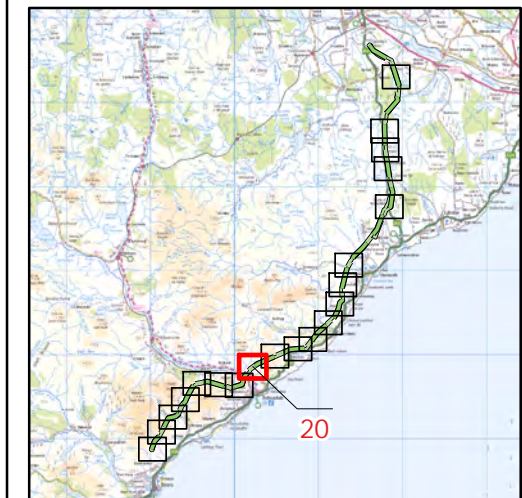
**Key**

**OHL Route Alignment and Tracks**

- OHL Alignment
- Limit of Deviation for OHL (LoD)
- 500m buffer from Limit of deviation
- Tower
- Permanent access track
- Temporary access track

**Skylark Breeding Status**

- Confirmed
- Probable
- Possible
- Non-breeding



0 500  
Meters

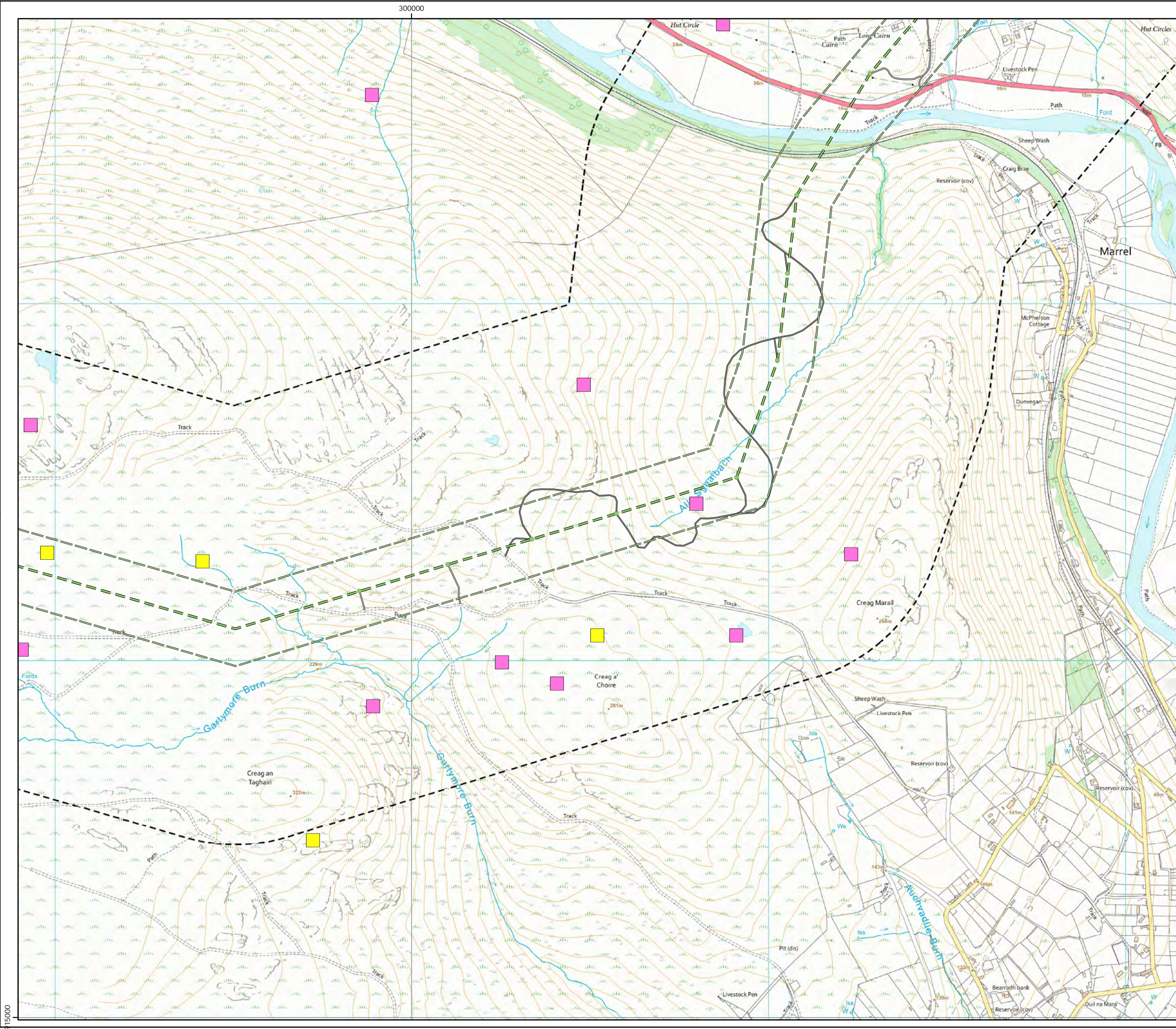
Scale @ A3:  
1:10,000

N

UKAS  
URAS

© Crown copyright 2025. All rights reserved.  
Ordnance survey licence number AC0000808122.



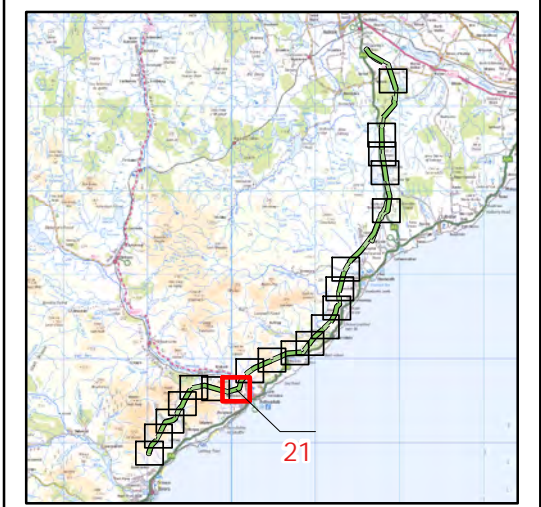


# Beaulieu to Spittal



Figure 6b  
Skylark Breeding  
Territories - 2024 Map 21

- Key**
- OHL Route Alignment and Tracks**
- OHL Alignment
  - Limit of Deviation for OHL (LoD)
  - 500m buffer from Limit of deviation
  - Tower
  - Permanent access track
  - Temporary access track
- Skylark**
- Breeding Status**
- Confirmed
  - Probable
  - Possible
  - Non-breeding



0 500 Meters

N

Scale @ A3:  
1:10,000

© Crown copyright 2025. All rights reserved.  
Ordnance survey licence number AC0000808122.



# Beauly to Spittal



Figure 6b  
Skylark Breeding  
Territories - 2024 Map 22

**Key**

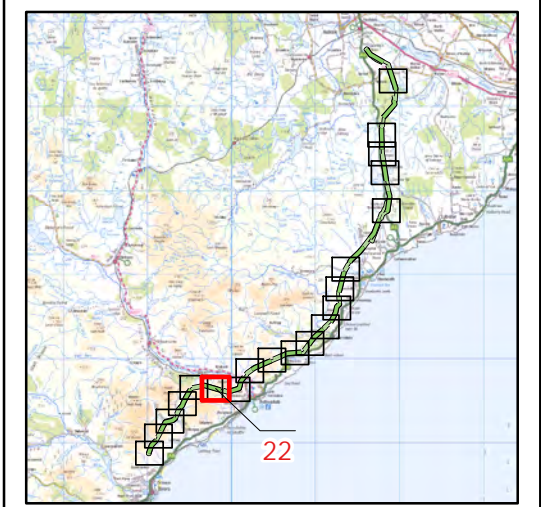
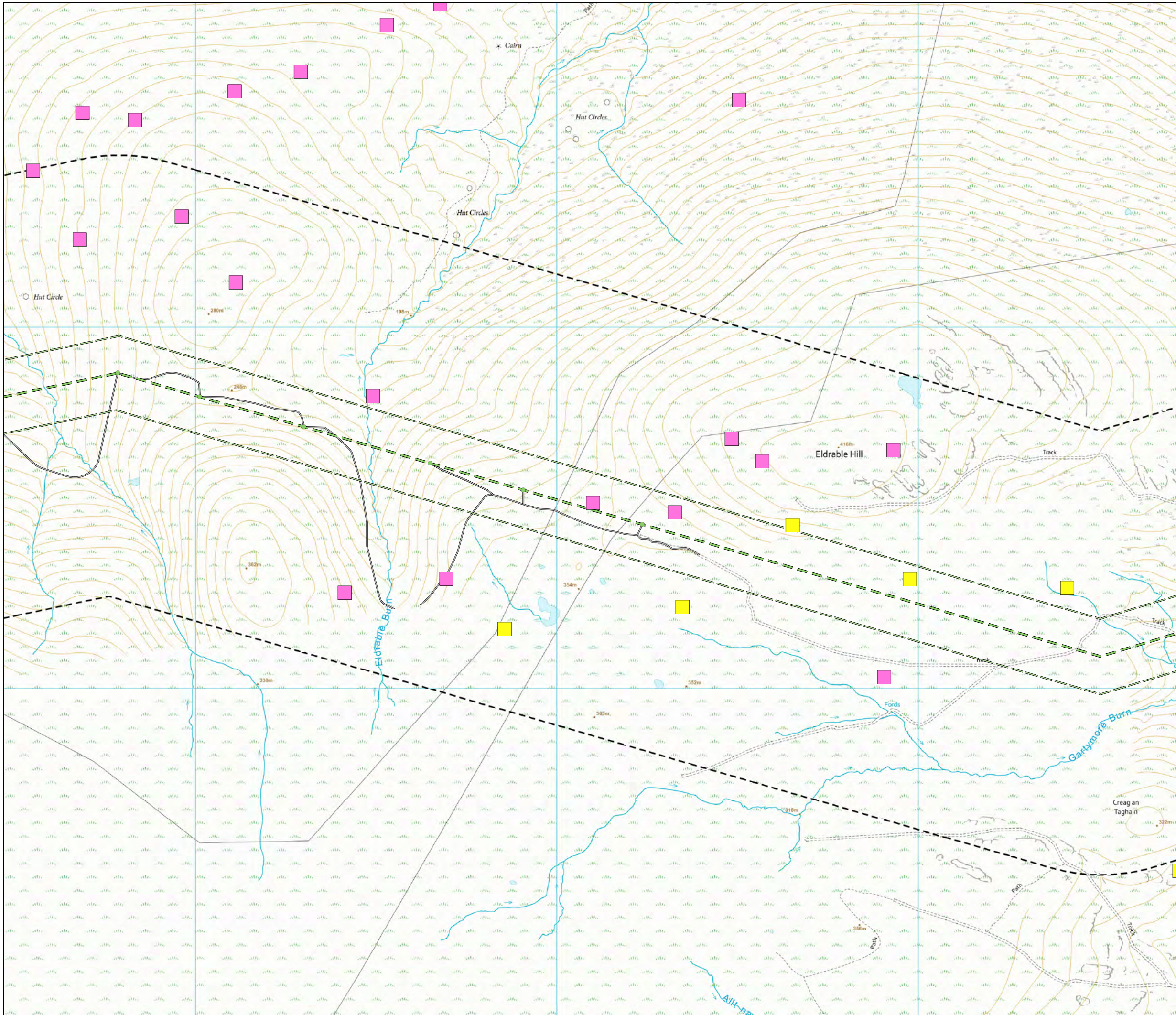
**OHL Route Alignment and Tracks**

- OHL Alignment
- Limit of Deviation for OHL (LoD)
- 500m buffer from Limit of deviation
- Tower
- Temporary access track

**Skylark**

**Breeding Status**

- Confirmed
- Probable
- Possible
- Non-breeding



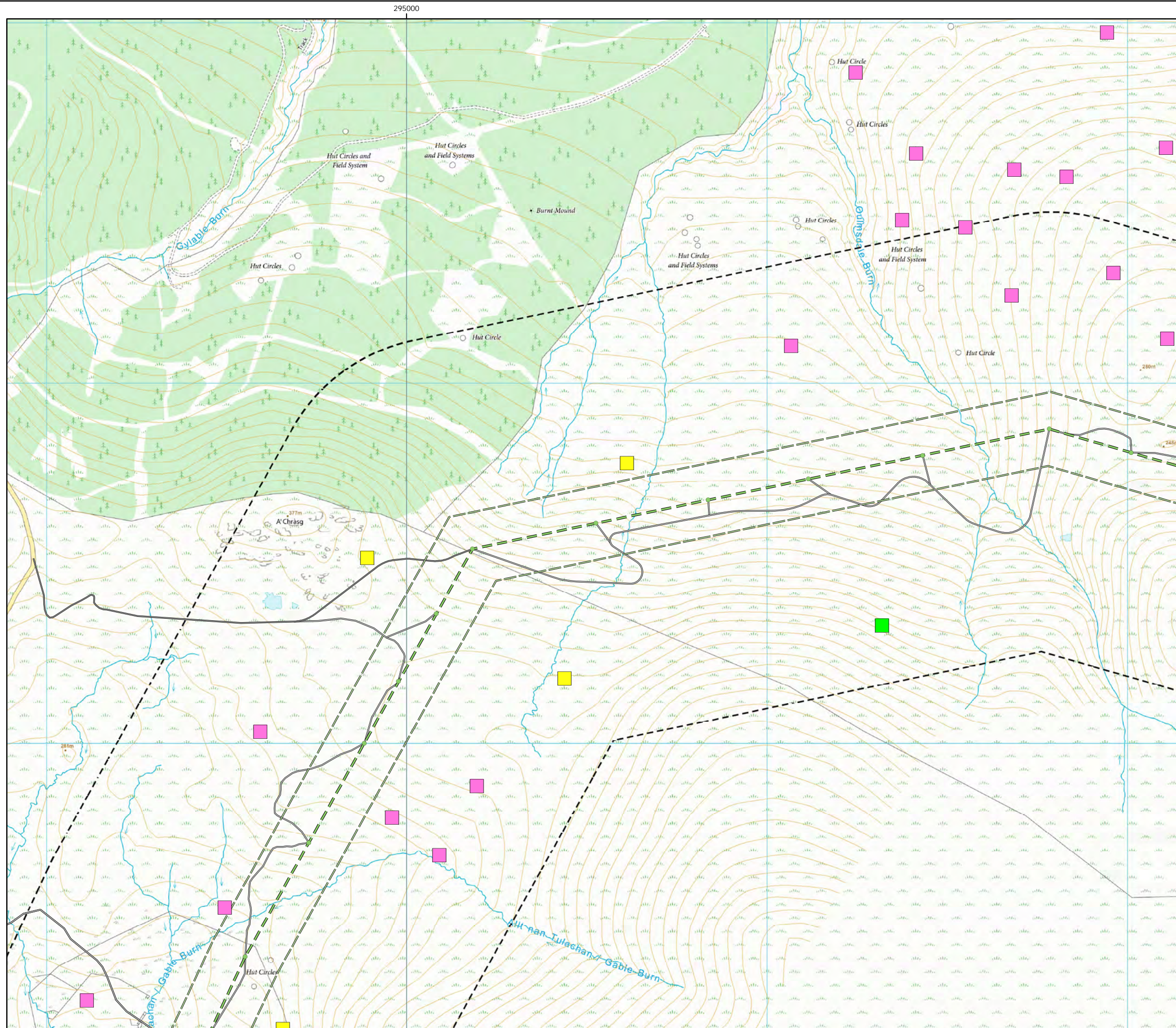
atmos CONSULTING

0 500 Meters

Scale @ A3: 1:10,000

UKAS





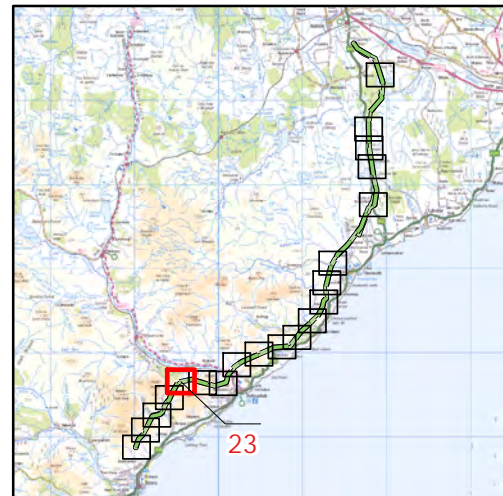
# Beaulieu to Spittal



Figure 6b  
Skylark Breeding  
Territories - 2024 Map 23

- Key**
- OHL Route Alignment and Tracks
    - OHL Alignment
    - Limit of Deviation for OHL (LoD)
    - 500m buffer from Limit of deviation
    - Tower
    - Permanent access track
    - Temporary access track

- Skylark  
Breeding Status**
- Confirmed
  - Probable
  - Possible
  - Non-breeding



0 500  
Meters



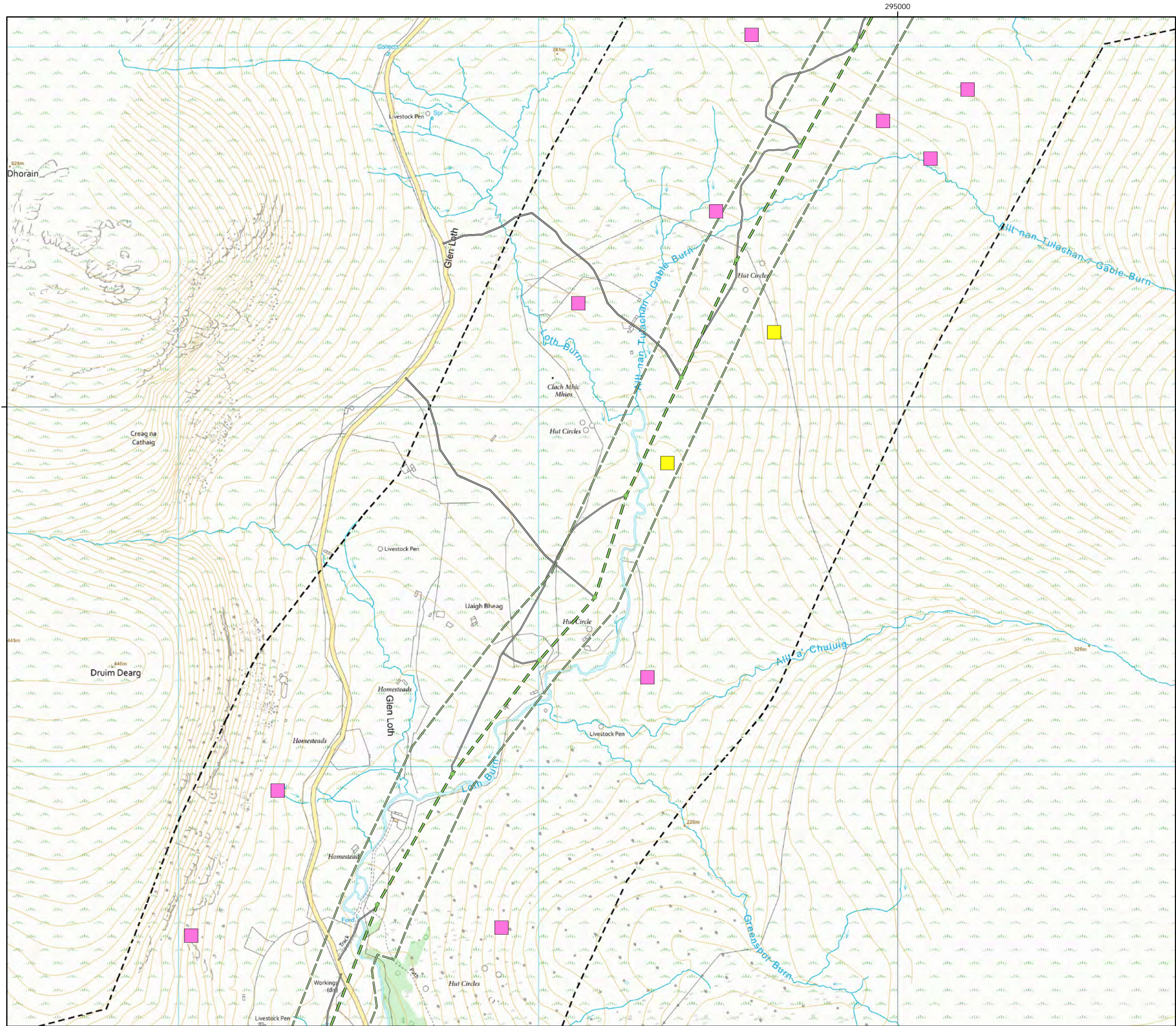
Scale @ A3:  
1:10,000



© Crown copyright 2025. All rights reserved.  
Ordnance survey licence number AC0000808122.

20/01/2025 79300/OR/094e  
Drawn by: AF Checked by: TH Approved by: JW





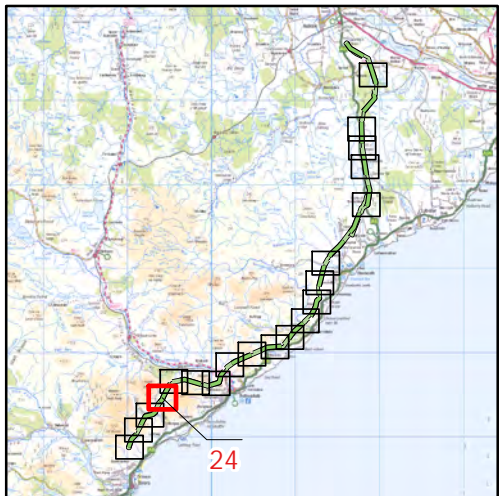
Beaulieu to Spittal



Figure 6b  
Skylark Breeding  
Territories - 2024 Map 24

- Key
- OHL Route Alignment and Tracks
    - OHL Alignment
    - Limit of Deviation for OHL (LoD)
    - 500m buffer from Limit of deviation
    - Tower
    - Temporary access track

- Skylark
- Breeding Status
- Confirmed
  - Probable
  - Possible
  - Non-breeding



0 500  
Meters



Scale @ A3:  
1:10,000



© Crown copyright 2025. All rights reserved.  
Ordnance survey licence number AC0000808122.



# Beauly to Spittal



Figure 6b  
Skylark Breeding  
Territories - 2024 Map 25

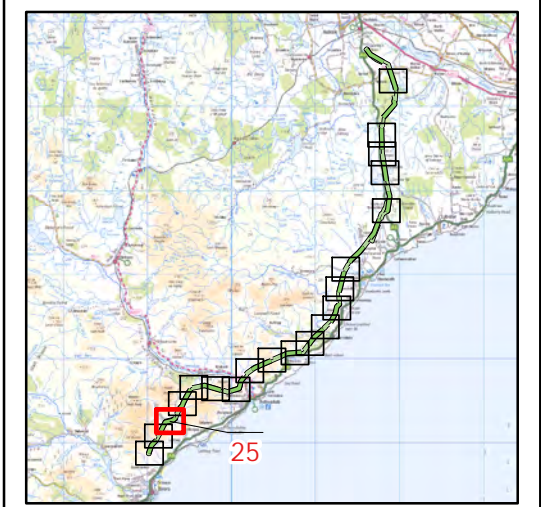
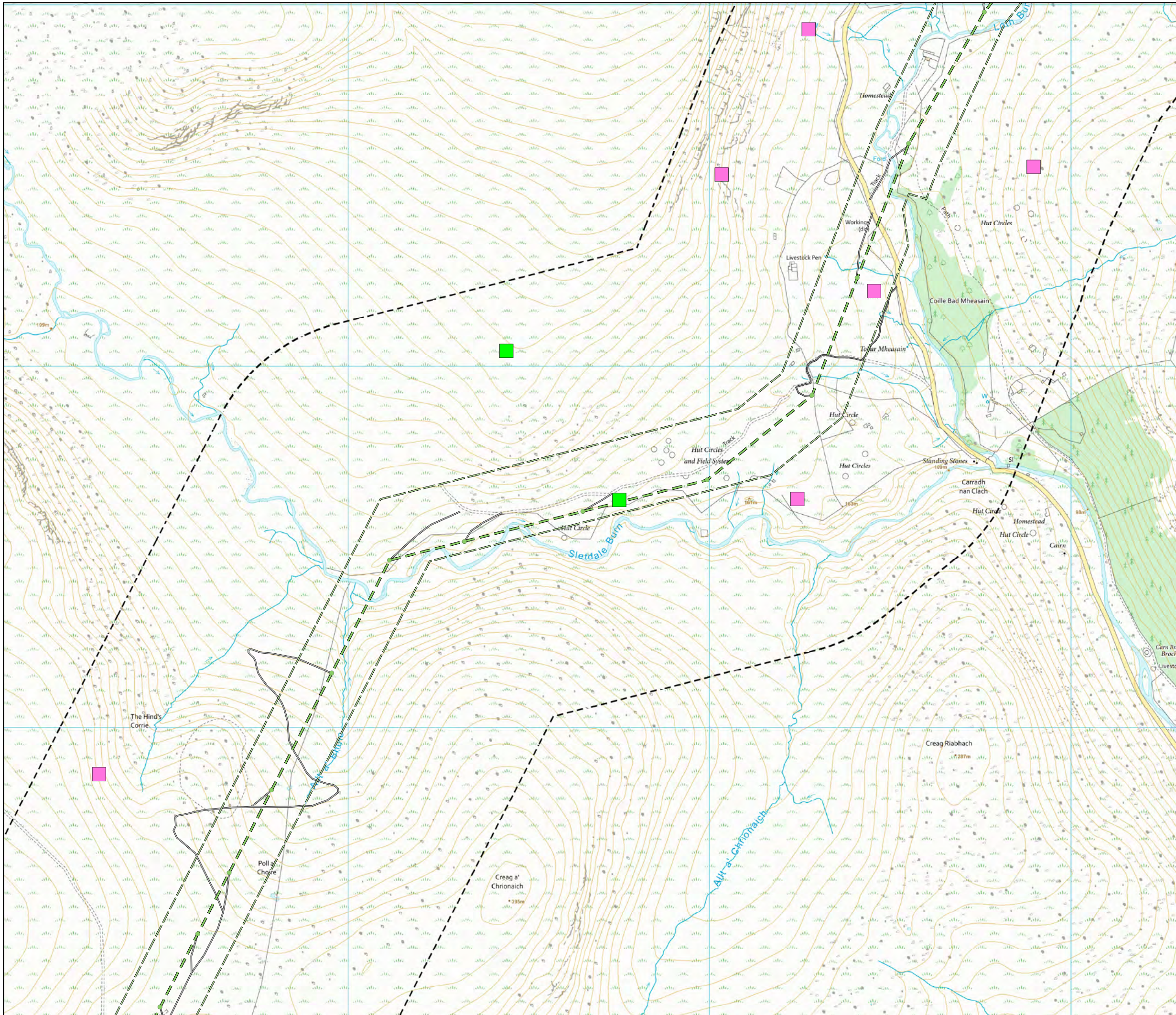
**Key**

**OHL Route Alignment and Tracks**

- OHL Alignment
- Limit of Deviation for OHL (LoD)
- 500m buffer from Limit of deviation
- Tower
- Permanent access track
- Temporary access track

**Skylark Breeding Status**

- Confirmed
- Probable
- Possible
- Non-breeding



atmos CONSULTING

0 500 Meters

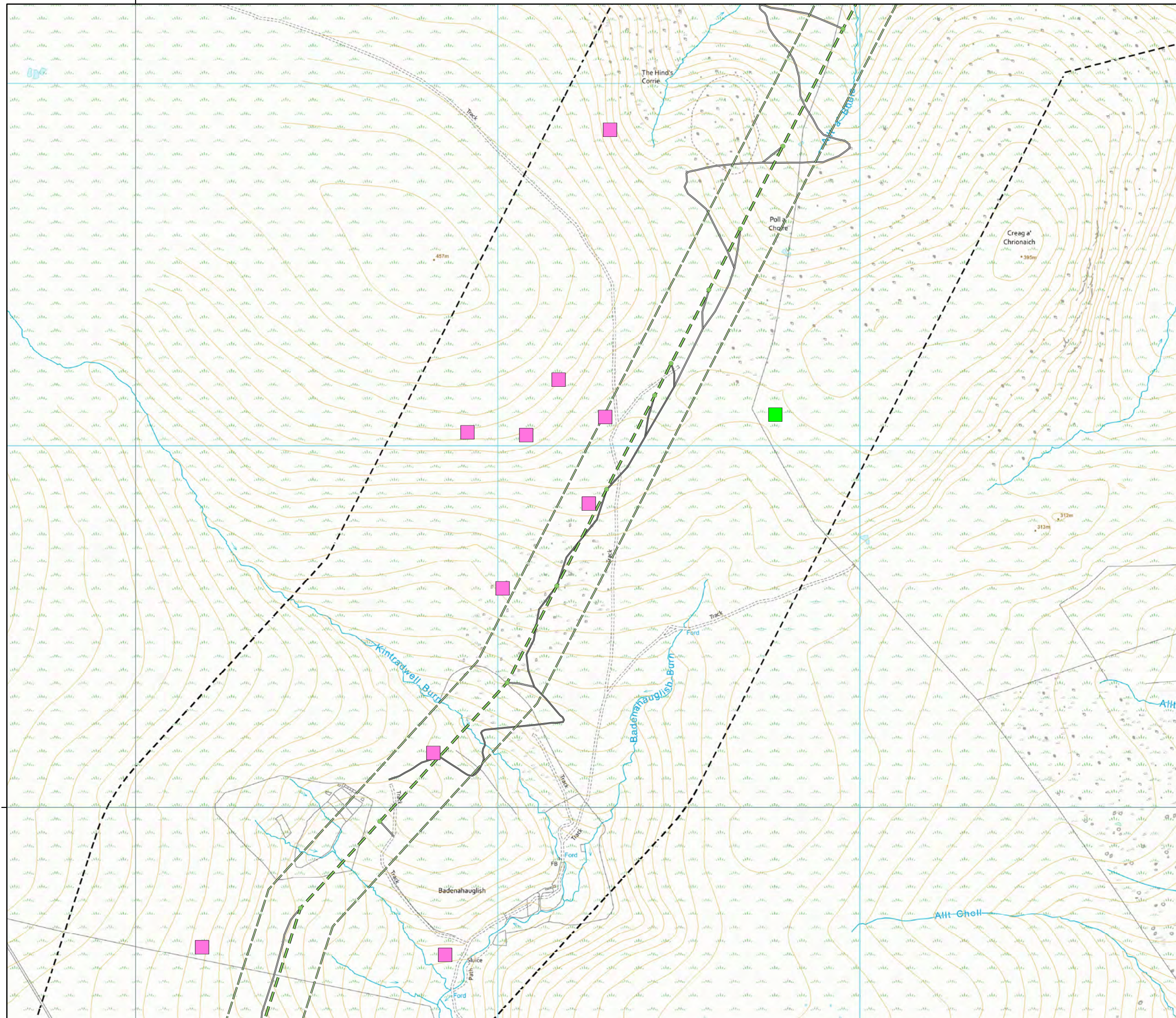
Scale @ A3: 1:10,000

North arrow and accreditation logos (UKAS, URAS)



290000

910000



# Beauly to Spittal



Figure 6b  
Skylark Breeding  
Territories - 2024 Map 26

## Key

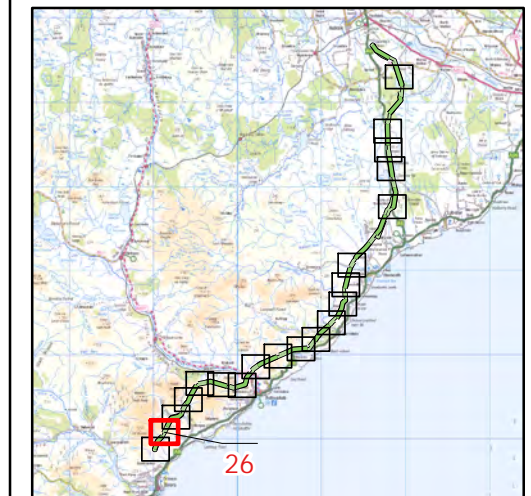
### OHL Route Alignment and Tracks

- OHL Alignment
- Limit of Deviation for OHL (LoD)
- 500m buffer from Limit of deviation
- Tower
- Permanent access track
- Temporary access track

## Skylark

### Breeding Status

- Confirmed
- Probable
- Possible
- Non-breeding



atmos  
CONSULTING

0 500  
Meters



Scale @ A3:  
1:10,000

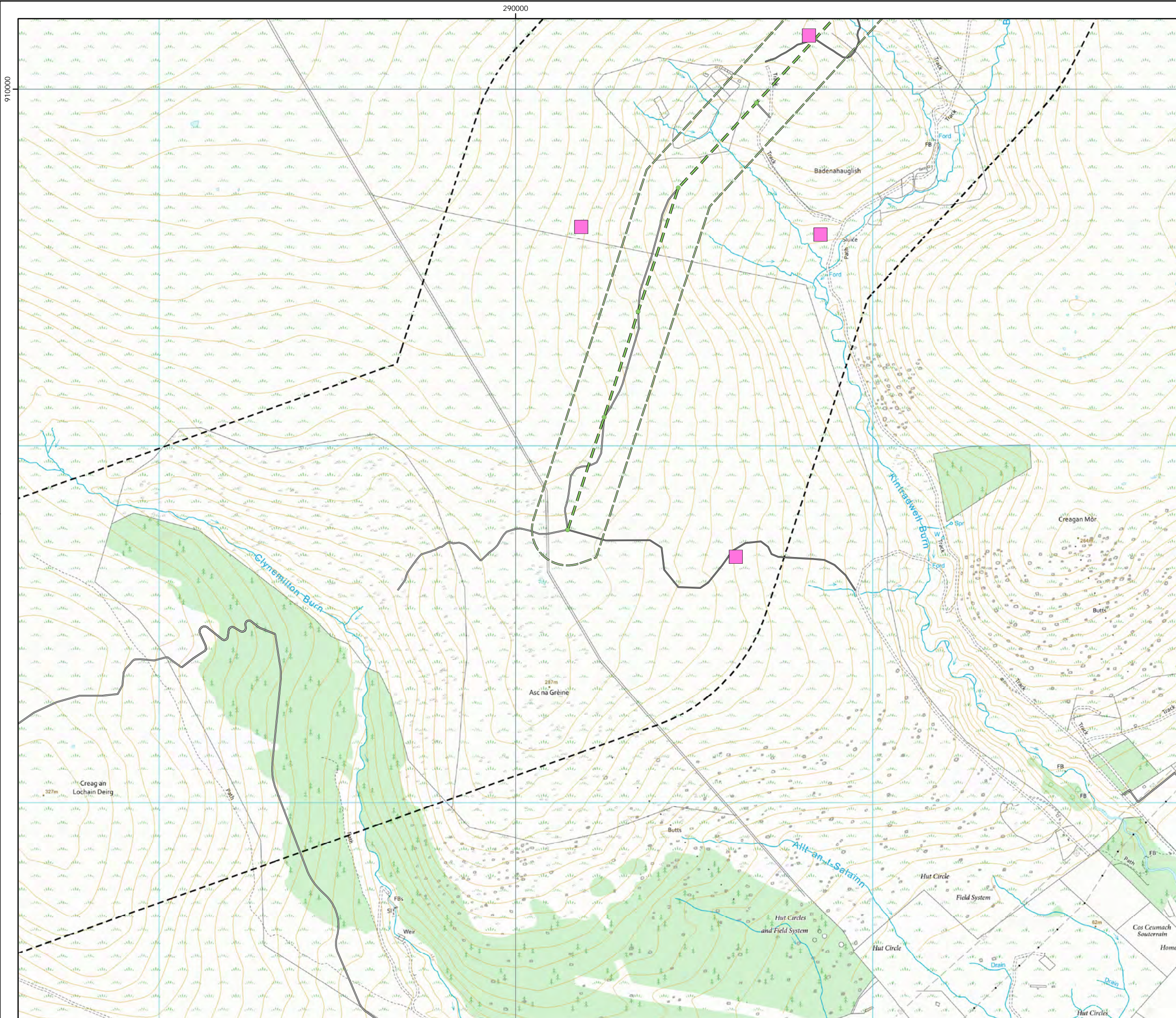


© Crown copyright 2025. All rights reserved.  
Ordnance survey licence number AC0000808122.

20/01/2025 79300/OR/094e

Drawn by: AF Checked by: TH Approved by: JW





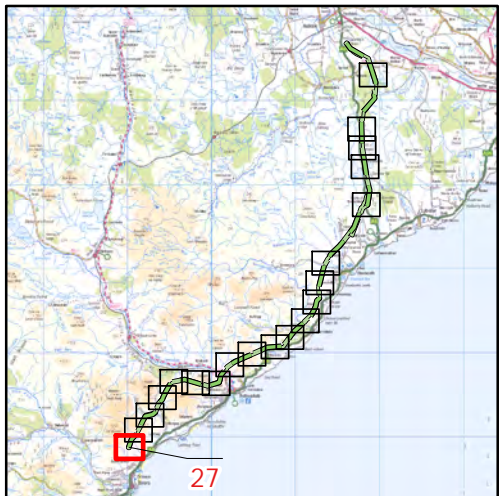
Beaulieu to Spittal



Figure 6b  
Skylark Breeding  
Territories - 2024 Map 27

- Key
- OHL Route Alignment and Tracks
- OHL Alignment
  - Limit of Deviation for OHL (LoD)
  - - - 500m buffer from Limit of deviation
  - Tower
  - Permanent access track
  - Temporary access track

- Skylark
- Breeding Status
- Confirmed
  - Probable
  - Possible
  - Non-breeding



0 500  
Meters



Scale @ A3:  
1:10,000



© Crown copyright 2025. All rights reserved.  
Ordnance survey licence number AC0000808122.

20/01/2025 79300/OR/094e  
Drawn by: AF Checked by: TH Approved by: JW



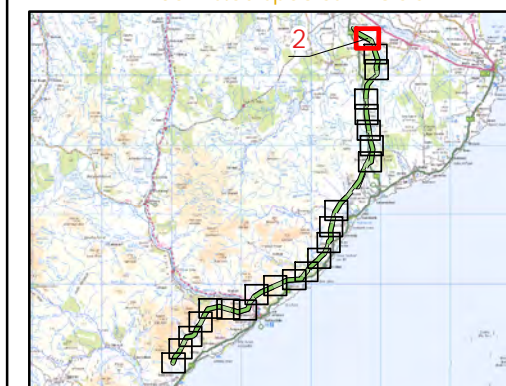
# Beauly to Spittal



Figure 6c  
Breeding Bird Survey  
2024 Results - Map 2

- Key**
- OHL Route Alignment and Tracks**
- OHL Alignment
  - Limit of Deviation for OHL (LoD)
  - 500m buffer from LoD
  - Tower
  - Permanent access track
  - Temporary access track
  - No Access Areas - surveyed from public roads
- Category**
- Schedule 1/Annex 1
  - Scottish Priority Species
  - Not designated
- Breeding Status**
- Confirmed
  - Probable
  - Possible
  - Non-breeding

Red Listed species - BOCC  
Amber Listed species - BOCC



atmos  
CONSULTING

0 500  
Meters



Scale @ A3:  
1:10,000



© Crown copyright 2025. All rights reserved.  
Ordnance survey licence number AC0000808122.

02/04/2025 79300/OR/094g  
Drawn by: TH Checked by: TH Approved by: JW



# Beauly to Spittal



Figure 6c  
Breeding Bird Survey  
2024 Results - Map 3

## Key

### OHL Route Alignment and Tracks

- OHL Alignment
- Limit of Deviation for OHL (LoD)
- 500m buffer from LoD
- Tower
- Permanent access track
- Temporary access track
- No Access Areas - surveyed from public roads

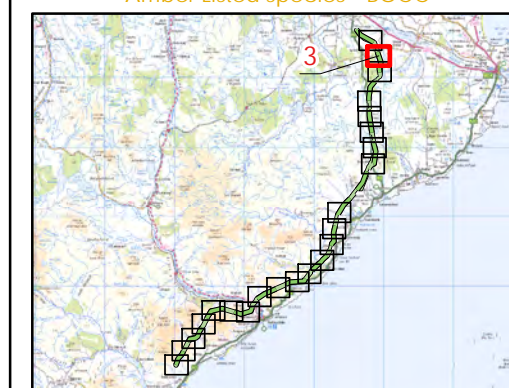
### Category

- Schedule 1/Annex 1
- Scottish Priority Species
- Not designated

### Breeding Status

- Confirmed
- Probable
- Possible
- Non-breeding

Red Listed species - BOCC  
Amber Listed species - BOCC



atmos  
CONSULTING

0 500  
Meters



Scale @ A3:  
1:10,000



© Crown copyright 2025. All rights reserved.  
Ordnance survey licence number AC0000808122.

02/04/2025 79300/OR/094g  
Drawn by: TH Checked by: TH Approved by: JW



# Beauly to Spittal



Figure 6c  
Breeding Bird Survey  
2024 Results - Map 4

## Key

### OHL Route Alignment and Tracks

- OHL Alignment
- Limit of Deviation for OHL (LoD)
- 500m buffer from LoD
- Tower
- Permanent access track
- Temporary access track
- No Access Areas - surveyed from public roads

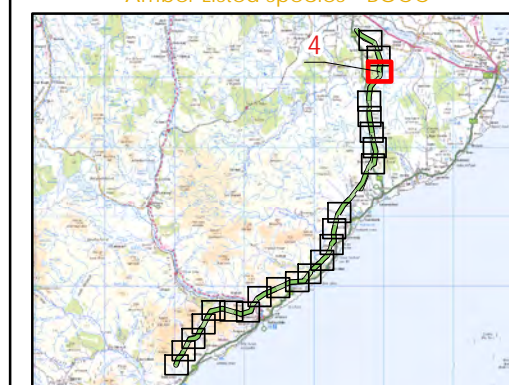
### Category

- Schedule 1/Annex 1
- Scottish Priority Species
- Not designated

### Breeding Status

- Confirmed
- Probable
- Possible
- Non-breeding

Red Listed species - BOCC  
Amber Listed species - BOCC



atmos  
CONSULTING

0 500  
Meters



Scale @ A3:  
1:10,000



© Crown copyright 2025. All rights reserved.  
Ordnance survey licence number AC0000808122.

02/04/2025 79300/OR/094g  
Drawn by: TH Checked by: TH Approved by: JW



# Beauly to Spittal



Figure 6c  
Breeding Bird Survey  
2024 Results - Map 6

## Key

### OHL Route Alignment and Tracks

- OHL Alignment
- Limit of Deviation for OHL (LoD)
- 500m buffer from LoD
- Tower
- Temporary access track
- No Access Areas - surveyed from public roads

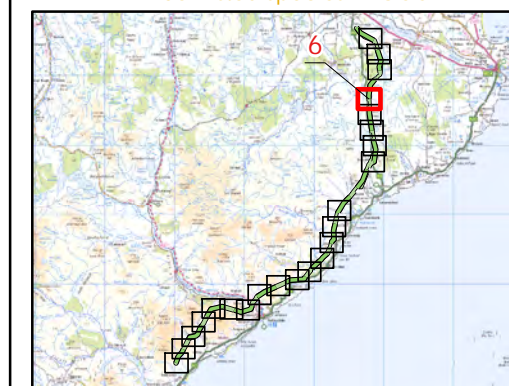
### Category

- Schedule 1/Annex 1
- Scottish Priority Species
- Not designated

### Breeding Status

- Confirmed
- Probable
- Possible
- Non-breeding

Red Listed species - BOCC  
Amber Listed species - BOCC



atmos  
CONSULTING

0 500  
Meters



Scale @ A3:  
1:10,000



© Crown copyright 2025. All rights reserved.  
Ordnance survey licence number AC0000808122.

02/04/2025 79300/OR/094g  
Drawn by: TH Checked by: TH Approved by: JW