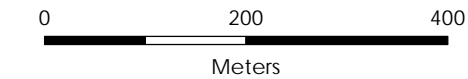
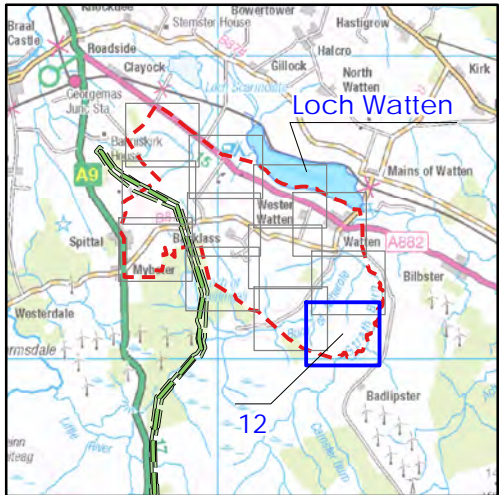


Beauly to Spittal



Figure 10a
Winter Foraging Survey fields
Loch Watten - Map 12

- Key**
- OHL Route Alignment and Tracks
 - OHL Alignment
 - Limit of Deviation for OHL (LoD)
 - 500m buffer from LoD
 - 2000m buffer from LoD
 - Tower
 - Permanent access track
 - Temporary access track
 - Survey area
 - Survey Field (labelled with number)



Scale @ A3:
1:7,500



© Crown copyright 2025. All rights reserved.
Ordnance survey licence number AC0000808122.

09/10/2024 79300/OR/099a
Drawn by: AF Checked by: TH Approved by: JW

Beauly to Spittal



Figure 10b
Greylag Goose Winter Foraging
Results – Loch Watten

Key

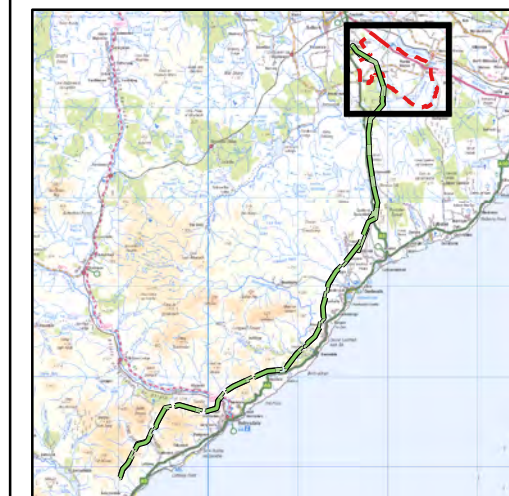
OHL Route Alignment and Tracks

- OHL Alignment
- Limit of Deviation for OHL (LoD)
- 500m limit of deviation buffer
- 2000m limit of deviation buffer

- Tower
- Permanent access track
- Temporary access track
- Survey area
- Field (labelled with number where activity present)

Mean Greylag goose count

- 0 - 20
- 20 - 40
- 40 - 60
- 60 - 80
- 80 - 100



atmos
CONSULTING

0 500 1,000
Meters



Scale @ A3:
1:35,000

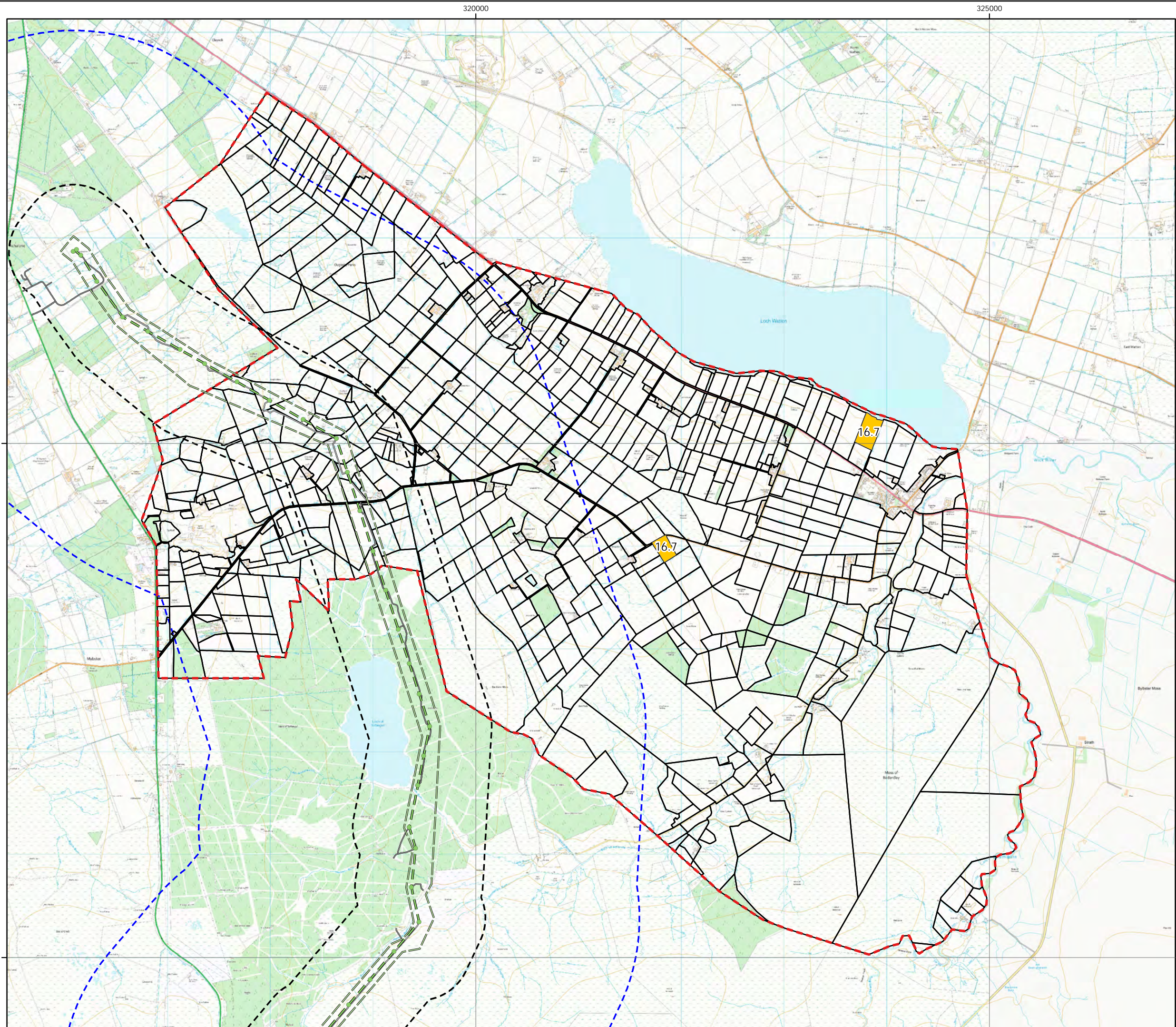


© Crown copyright 2025. All rights reserved.
Ordnance survey licence number AC0000808122.

20/01/2025

79300/OR/099b

Drawn by: AF Checked by: TH Approved by: JW



Beauly to Spittal



Figure 10c
Pink-footed Goose
Winter Foraging
Results – Loch Watten

- Key**
- OHL Route Alignment and Tracks**
- OHL Alignment
 - Limit of Deviation for OHL (LoD)
 - 500m limit of deviation buffer
 - 2000m limit of deviation buffer
 - Tower
 - Permanent access track
 - Temporary access track
 - Survey area
 - Field (labelled with number where activity present)
- Mean Pink-footed Goose count**
- 0 - 20
 - 20 - 40
 - 40 - 60
 - 60 - 80
 - 80 - 100



0 500 1,000
Meters



Scale @ A3:
1:35,000



© Crown copyright 2025. All rights reserved.
Ordnance survey licence number AC0000808122.

21/01/2025 79300/OR/099c
Drawn by: AF Checked by: TH Approved by: JW

Beauly to Spittal



Figure 10d
Whooper swan Winter Foraging
Results – Loch Watten

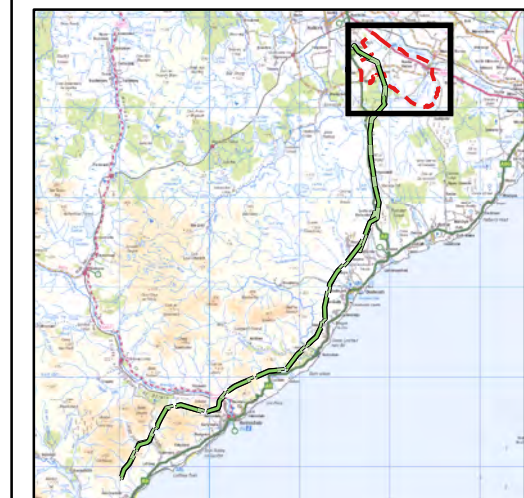
Key

OHL Route Alignment and Tracks

- OHL Alignment
- Limit of Deviation for OHL (LoD)
- 500m limit of deviation buffer
- 2000m limit of deviation buffer
- Tower
- Permanent access track
- Temporary access track
- Survey area
- Field (labelled with number where activity present)

Mean Whooper swan count

- < 20
- 20- 40
- 40 - 60
- 60 - 80
- 80 - 100



0 500 1,000
Meters

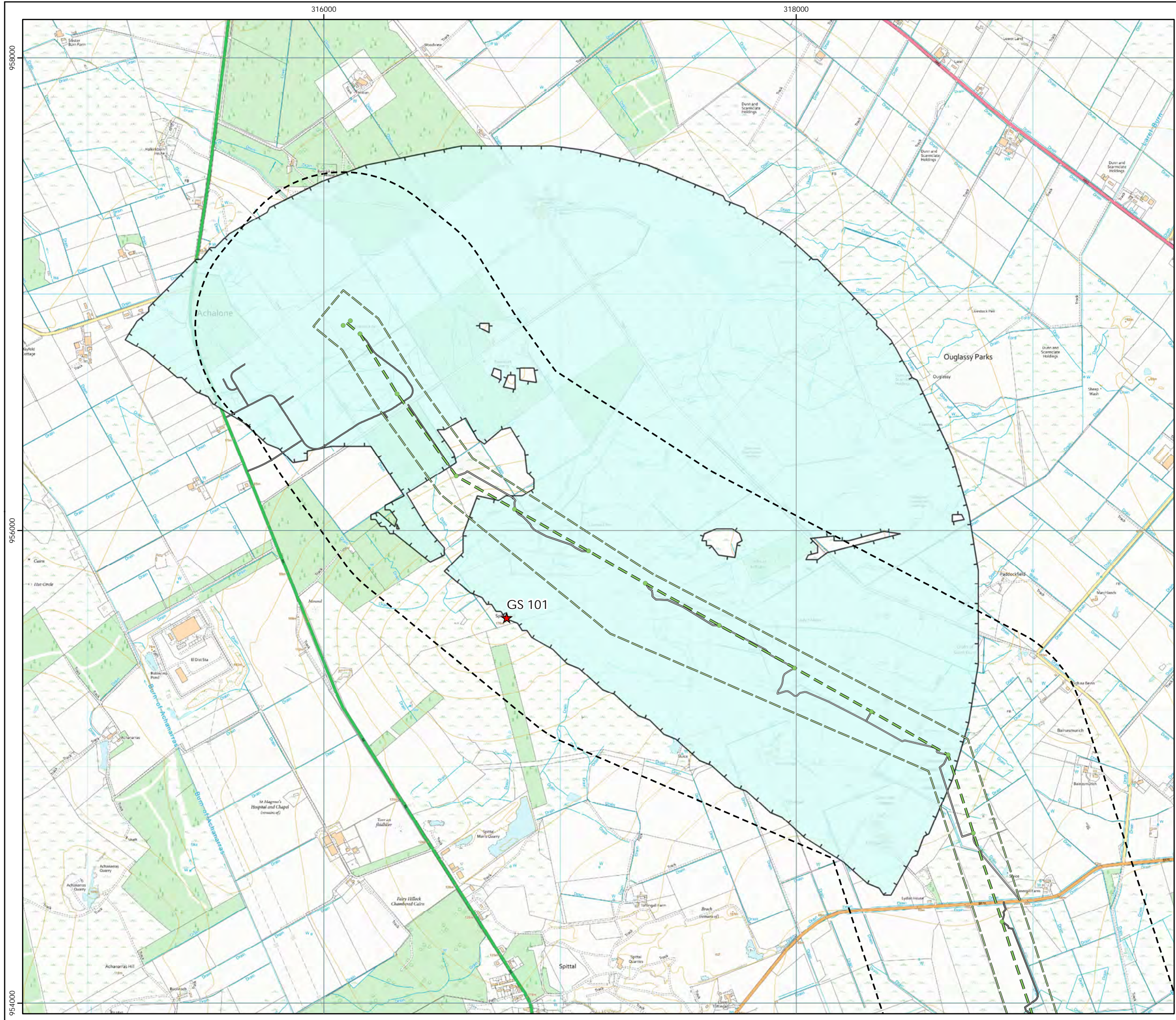


Scale @ A3:
1:35,000



© Crown copyright 2025. All rights reserved.
Ordnance survey licence number AC0000808122.

20/01/2025 79300/OR/099d
Drawn by: AF Checked by: TH Approved by: JW



Beauly to Spittal



Figure 11
Goose and Swan Winter Roost
VP Locations and Viewsheds
Map 1

Key

OHL Route Alignment and Tracks

- OHL Alignment
- Limit of Deviation for OHL (LoD)
- 500m buffer from LoD
- Tower
- Permanent access track
- Temporary access track
- Vantage Point

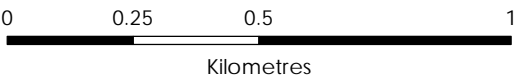
VP Viewshed

- GS 101

Generated using Ordnance Survey's Terrain 50 dataset that does not take into account the screening effects of buildings.

Observer height 1.5m above ground.
Viewshed height modelled 10m above ground.

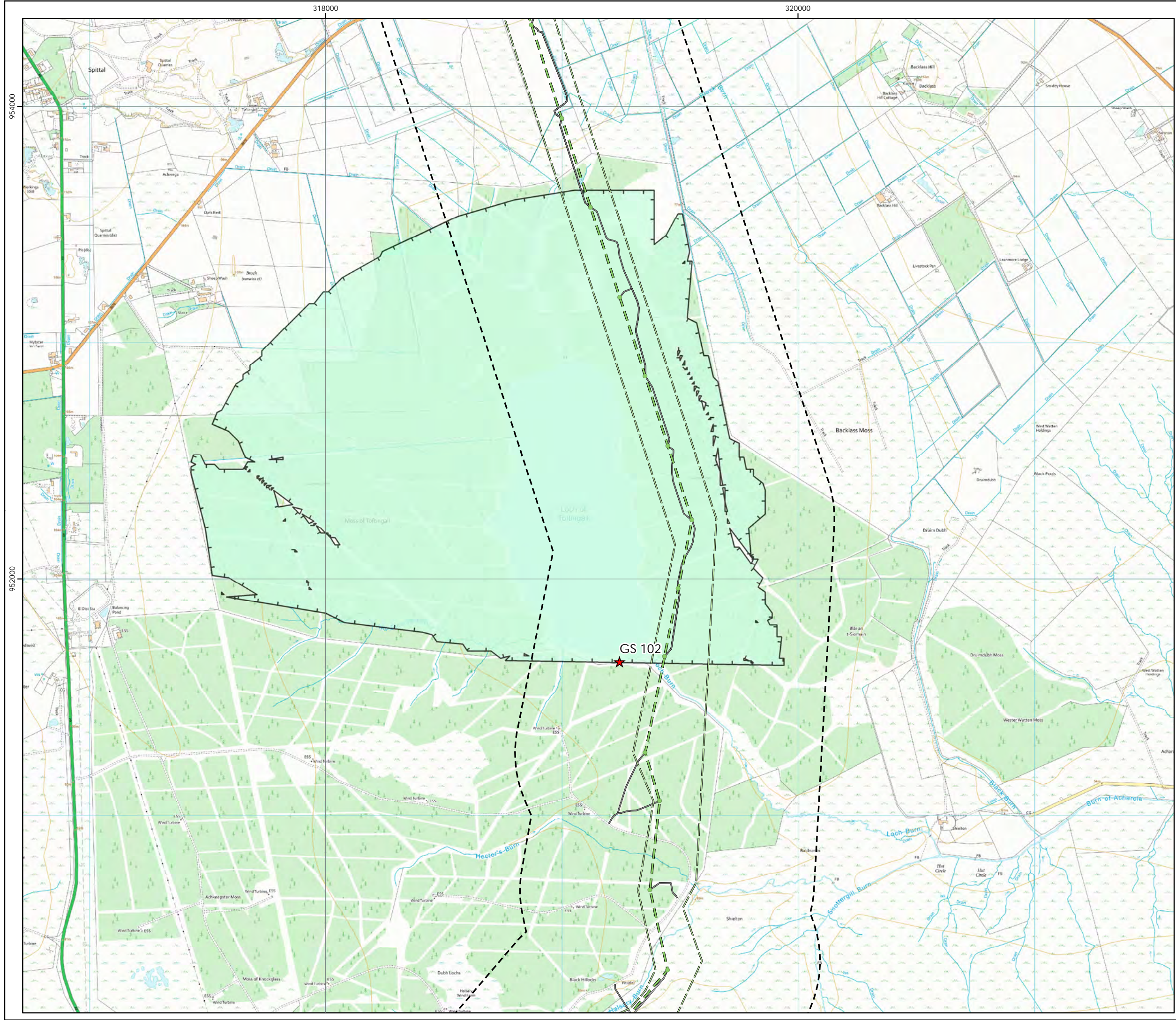
Forestry has been used to screen visibility at a height of 10m using the Ordnance Survey OpenMapLocal Woodland dataset.



Scale @ A3:
1:15,000



© Crown copyright 2025. All rights reserved.
Ordnance survey licence number AC0000808122.



Beauly to Spittal



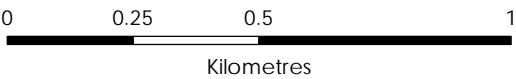
Figure 11
Goose and Swan Winter Roost
VP Locations and Viewsheds
Map 2

- Key**
- OHL Route Alignment and Tracks**
- OHL Alignment
 - Limit of Deviation for OHL (LoD)
 - 500m buffer from LoD
 - Tower
 - Permanent access track
 - Temporary access track
 - Vantage Point
- VP Viewshed**
- GS 102

Generated using Ordnance Survey's Terrain 50 dataset that does not take into account the screening effects of buildings.

Observer height 1.5m above ground.
Viewshed height modelled 10m above ground.

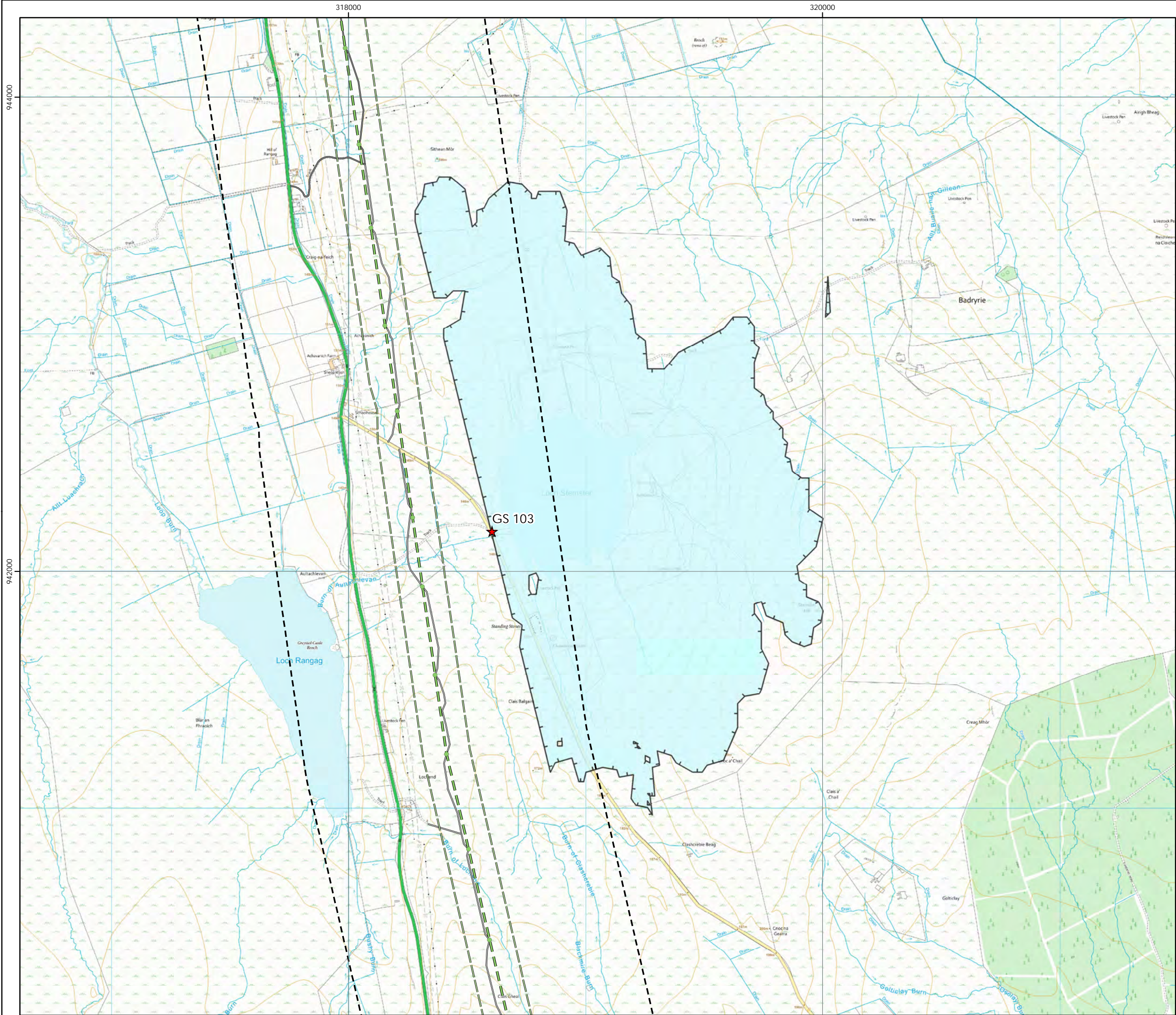
Forestry has been used to screen visibility at a height of 10m using the Ordnance Survey OpenMapLocal Woodland dataset.



Scale @ A3:
1:15,000



© Crown copyright 2025. All rights reserved.
Ordnance survey licence number AC0000808122.



Beauly to Spittal



Figure 11
Goose and Swan Winter Roost
VP Locations and Viewsheds
Map 3

Key

OHL Route Alignment and Tracks

- OHL Alignment
- Limit of Deviation for OHL (LoD)
- 500m buffer from LoD
- Tower
- Permanent access track
- Temporary access track
- Vantage Point

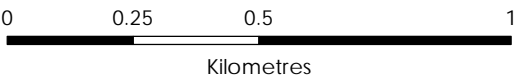
VP Viewshed

- GS 103

Generated using Ordnance Survey's Terrain 50 dataset that does not take into account the screening effects of buildings.

Observer height 1.5m above ground.
Viewshed height modelled 10m above ground.

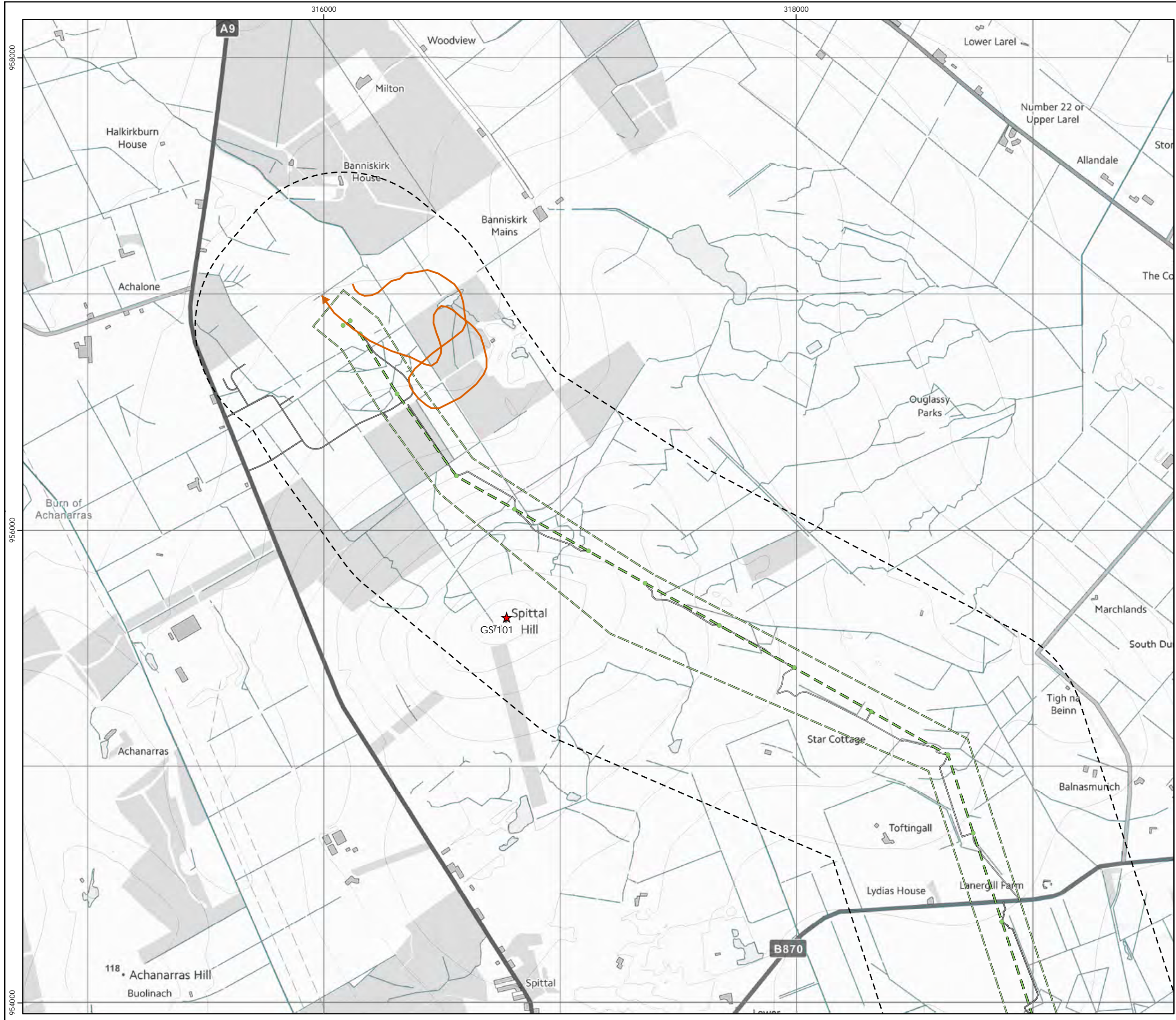
Forestry has been used to screen visibility at a height of 10m using the Ordnance Survey OpenMapLocal Woodland dataset.



Scale @ A3:
1:15,000



© Crown copyright 2025. All rights reserved.
Ordnance survey licence number AC0000808122.

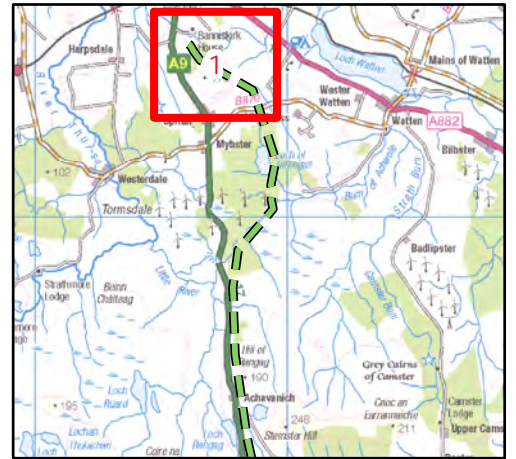


Beauly to Spittal



Figure 12a
Goose and Swans Roost Activity
Kites, eagles and owls - Map 1

- Key**
- OHL Route Alignment and Tracks
 - OHL Alignment
 - Limit of Deviation for OHL (LoD)
 - 500m buffer from LoD
 - Tower
 - Permanent access track
 - Temporary access track
 - Vantage Point
 - Target species registrations
 - Golden eagle
 - Height Band
 - Below 5m height
 - 5 - 70m height
 - Above 70m height
 - On ground
 - Heard only



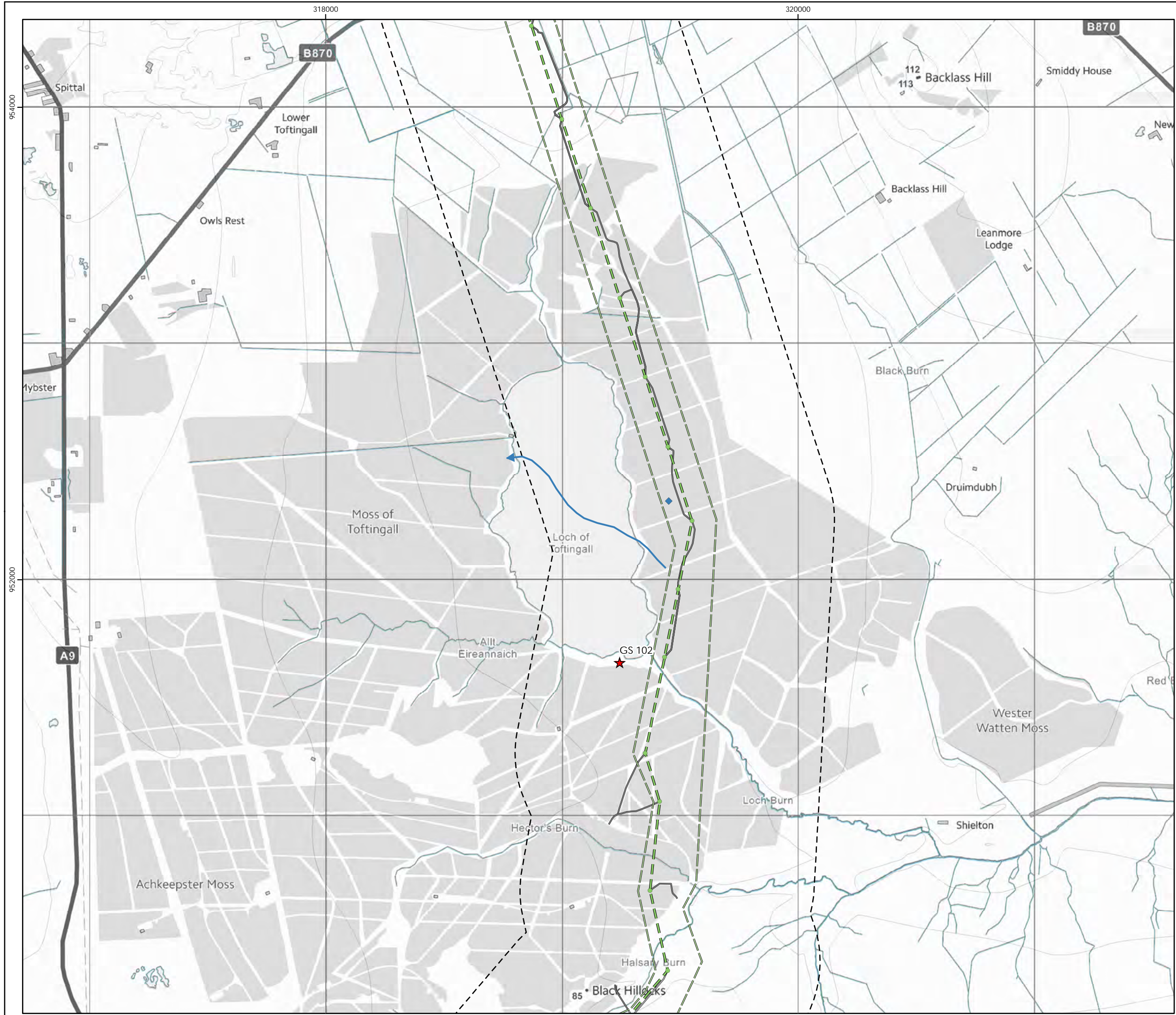
0 0.175 0.35 0.7
Kilometres



Scale @ A3:
1:15,000



© Crown copyright 2025. All rights reserved.
Ordnance survey licence number AC0000808122.

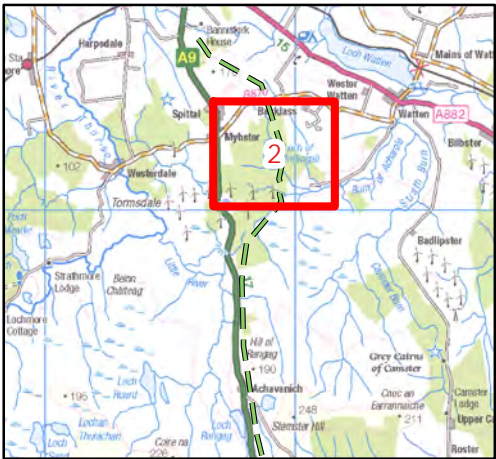


Beauly to Spittal



Figure 12b
Goose and Swans Roost Activity
Other raptors - Map 2

- Key**
- OHL Route Alignment and Tracks**
- OHL Alignment
 - Limit of Deviation for OHL (LoD)
 - 500m buffer from LoD
 - Tower
 - Permanent access track
 - Temporary access track
 - Vantage Point
- Target species registrations**
- Osprey
- Height Band**
- Below 5m height
 - 5 - 70m height
 - Above 70m height
 - On ground
 - Heard only



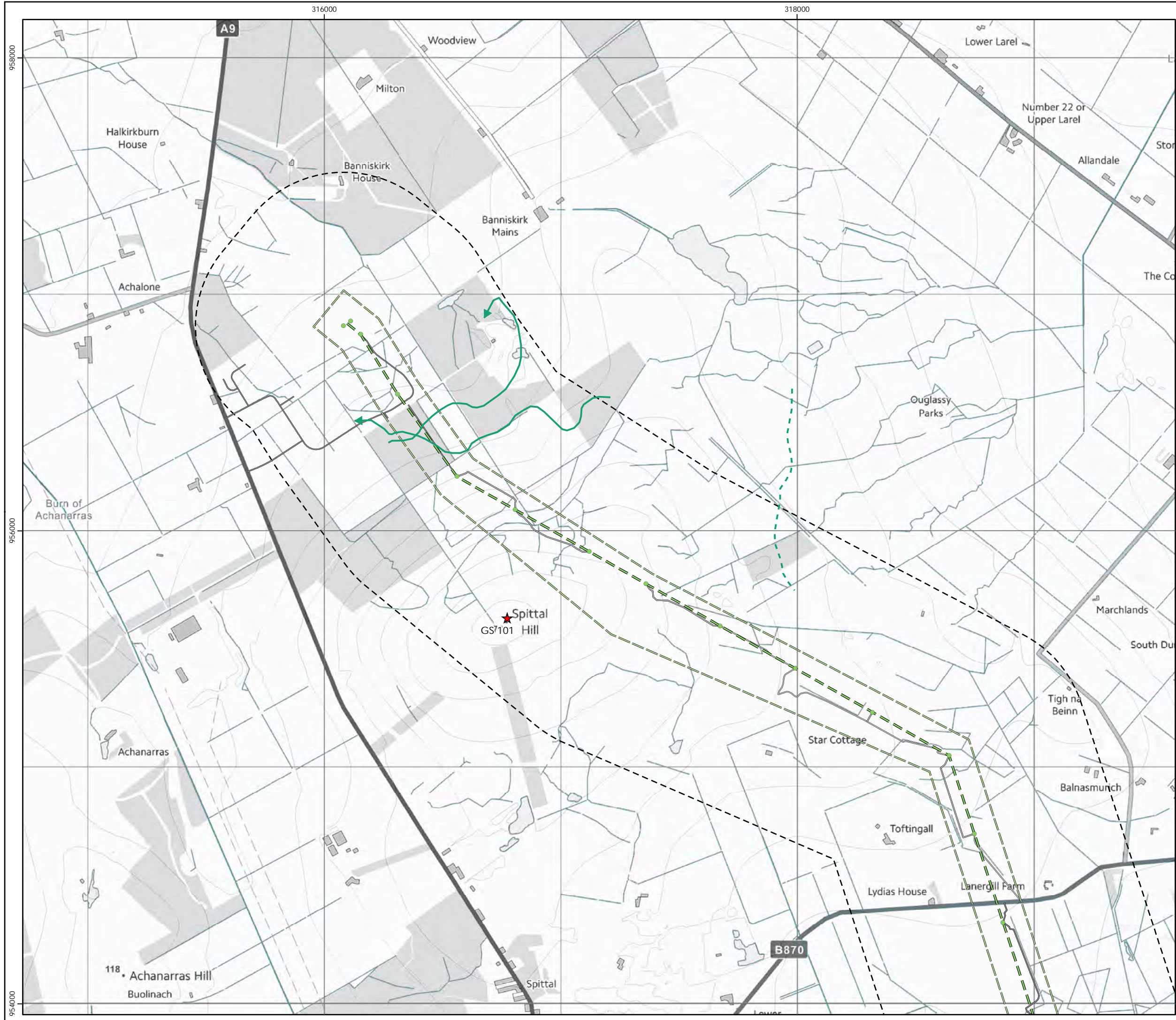
0 0.175 0.35 0.7
Kilometres



Scale @ A3:
1:15,000



© Crown copyright 2025. All rights reserved.
Ordnance survey licence number AC0000808122.



Beauuly to Spittal



Figure 12c
Goose and Swans Roost Activity
Gulls - Map 1

Key

OHL Route Alignment and Tracks

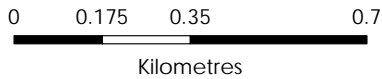
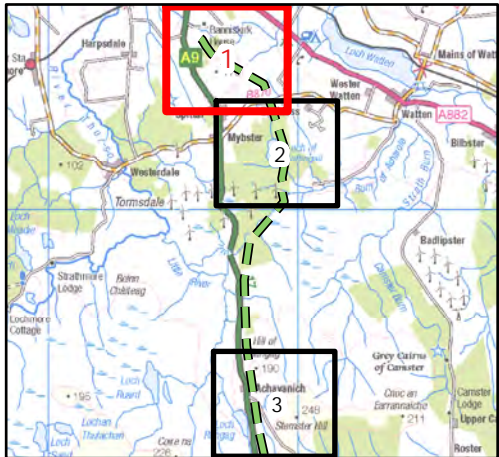
- OHL Alignment
- Limit of Deviation for OHL (LoD)
- 500m buffer from LoD
- Tower
- Permanent access track
- Temporary access track
- Vantage Point

Target species registrations

- Common gull
- Great-black backed gull
- Herring gull

Height Band

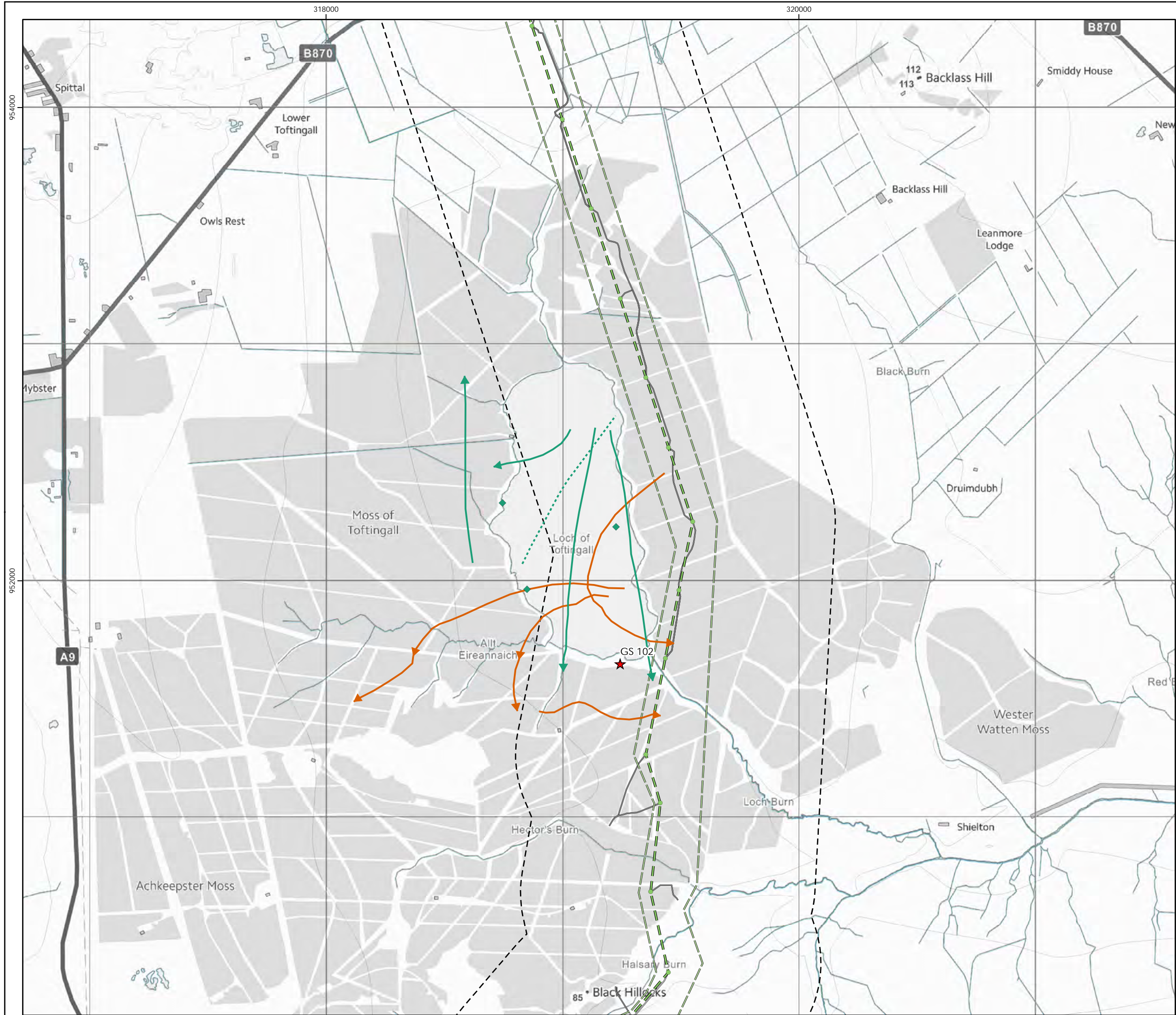
- Below 5m height
- 5 - 70m height
- Above 70m height
- On ground
- Heard only



Scale @ A3:
1:15,000



© Crown copyright 2025. All rights reserved.
Ordnance survey licence number AC0000808122.



Beauly to Spittal



Figure 12c
Goose and Swans Roost Activity
Gulls - Map 2

Key

OHL Route Alignment and Tracks

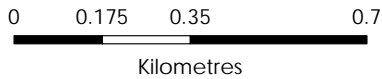
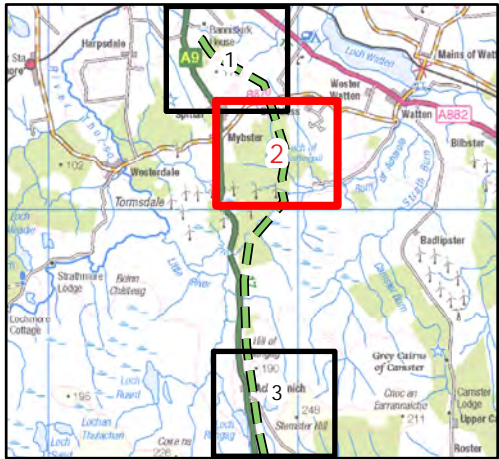
- OHL Alignment
- Limit of Deviation for OHL (LoD)
- 500m buffer from LoD
- Tower
- Permanent access track
- Temporary access track
- Vantage Point

Target species registrations

- Common gull
- Great-black backed gull
- Herring gull

Height Band

- Below 5m height
- 5 - 70m height
- Above 70m height
- On ground
- Heard only



Scale @ A3:
1:15,000



© Crown copyright 2025. All rights reserved.
Ordnance survey licence number AC0000808122.

Beauly to Spittal



Figure 12c
Goose and Swans Roost Activity
Gulls - Map 3

Key

OHL Route Alignment and Tracks

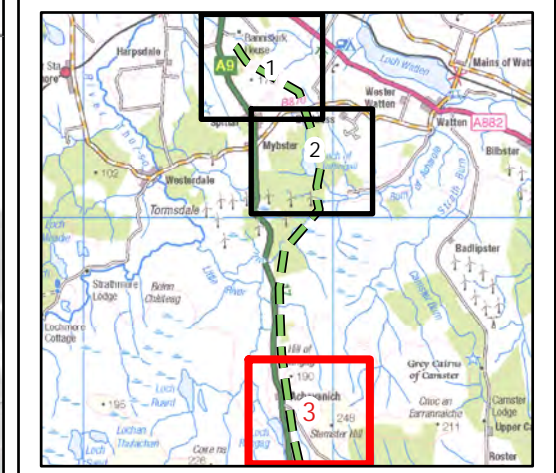
- OHL Alignment
- Limit of Deviation for OHL (LoD)
- 500m buffer from LoD
- Tower
- Permanent access track
- Temporary access track
- Vantage Point

Target species registrations

- Common gull
- Great-black backed gull
- Herring gull

Height Band

- Below 5m height
- 5 - 70m height
- Above 70m height
- On ground
- Heard only



0 0.175 0.35 0.7
Kilometres

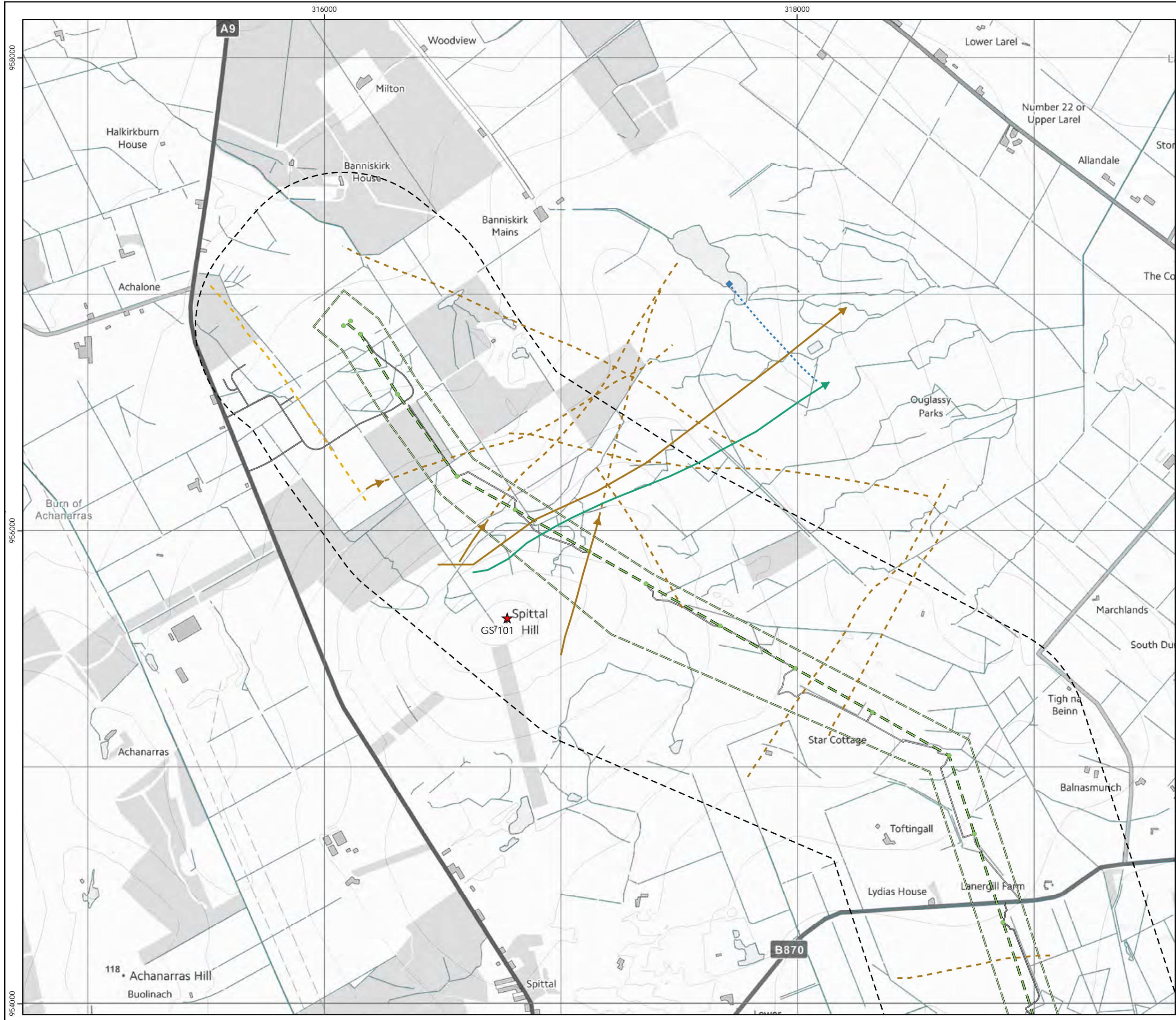
N

Scale @ A3:
1:15,000

UKAS

© Crown copyright 2025. All rights reserved.
Ordnance survey licence number AC0000808122.



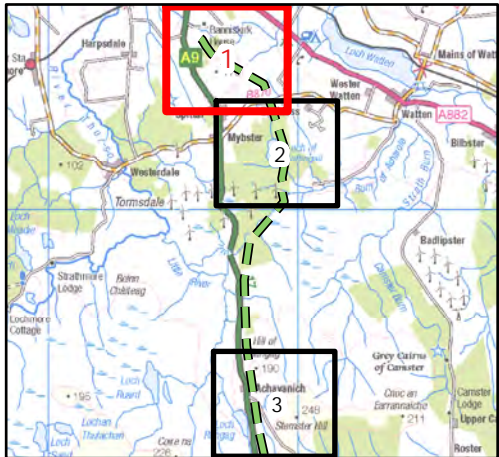


Beauly to Spittal



Figure 12d
Goose and Swans Roost Activity
Geese and swans - Map 1

- Key**
- OHL Route Alignment and Tracks**
- OHL Alignment
 - Limit of Deviation for OHL (LoD)
 - 500m buffer from LoD
 - Tower
 - Permanent access track
 - Temporary access track
 - Vantage Point
- Target species registrations**
- Greylag goose
 - Whooper goose
 - Unidentified goose
 - Unidentified yellow billed swan
 - Pink-footed goose
- Height Band**
- Below 5m height
 - 5 - 70m height
 - Above 70m height
 - On ground
 - Heard only



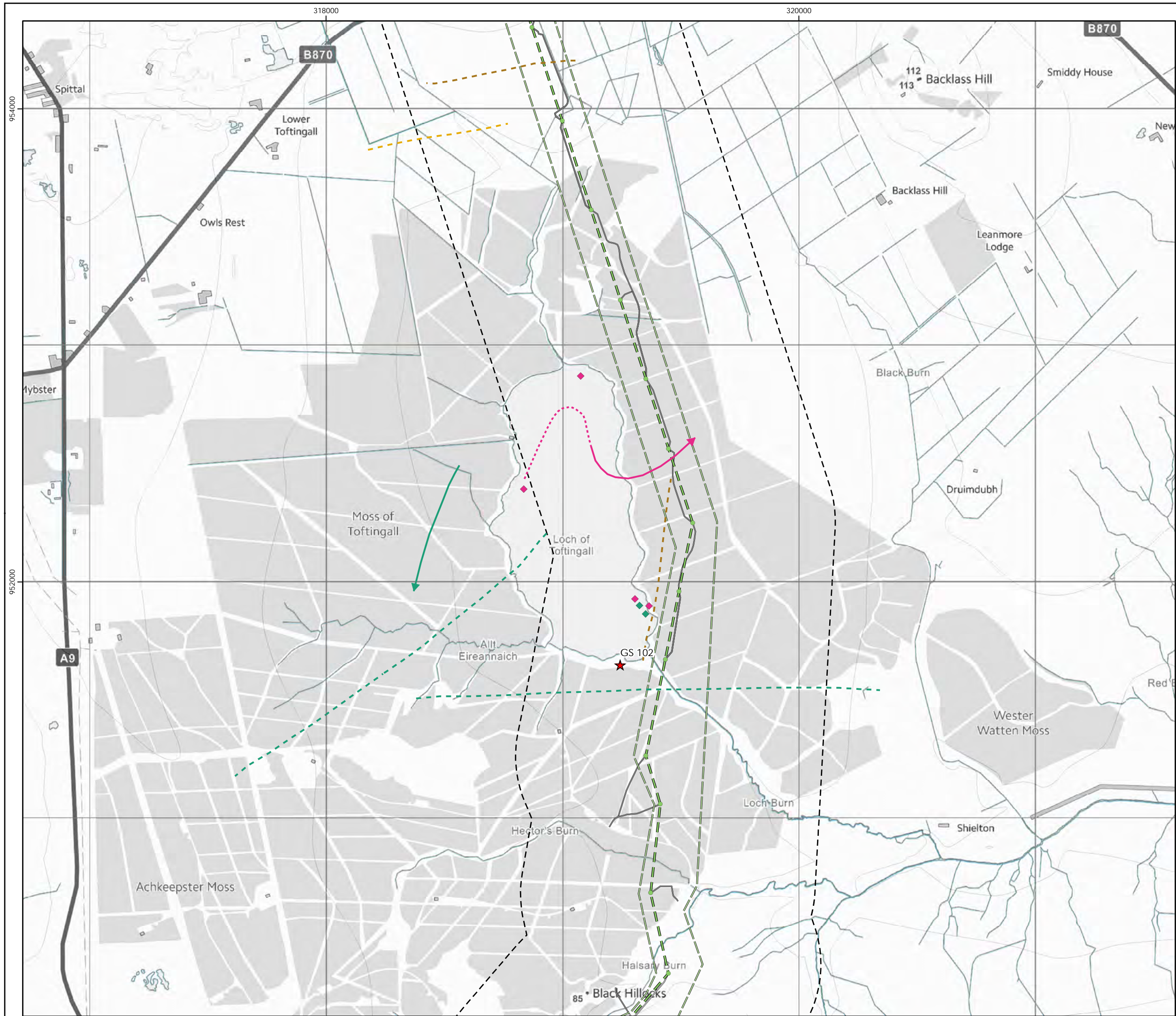
0 0.175 0.35 0.7
Kilometres



Scale @ A3:
1:15,000



© Crown copyright 2025. All rights reserved.
Ordnance survey licence number AC0000808122.

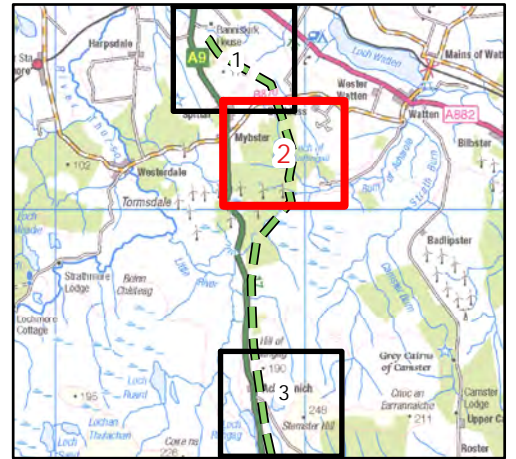


Beauly to Spittal



Figure 12d
Goose and Swans Roost Activity
Geese and swans - Map 2

- Key**
- OHL Route Alignment and Tracks**
- OHL Alignment
 - Limit of Deviation for OHL (LoD)
 - 500m buffer from LoD
 - Tower
 - Permanent access track
 - Temporary access track
 - Vantage Point
- Target species registrations**
- Greylag goose
 - Whooper goose
 - Unidentified goose
 - Unidentified yellow billed swan
 - Pink-footed goose
- Height Band**
- Below 5m height
 - 5 - 70m height
 - Above 70m height
 - On ground
 - Heard only



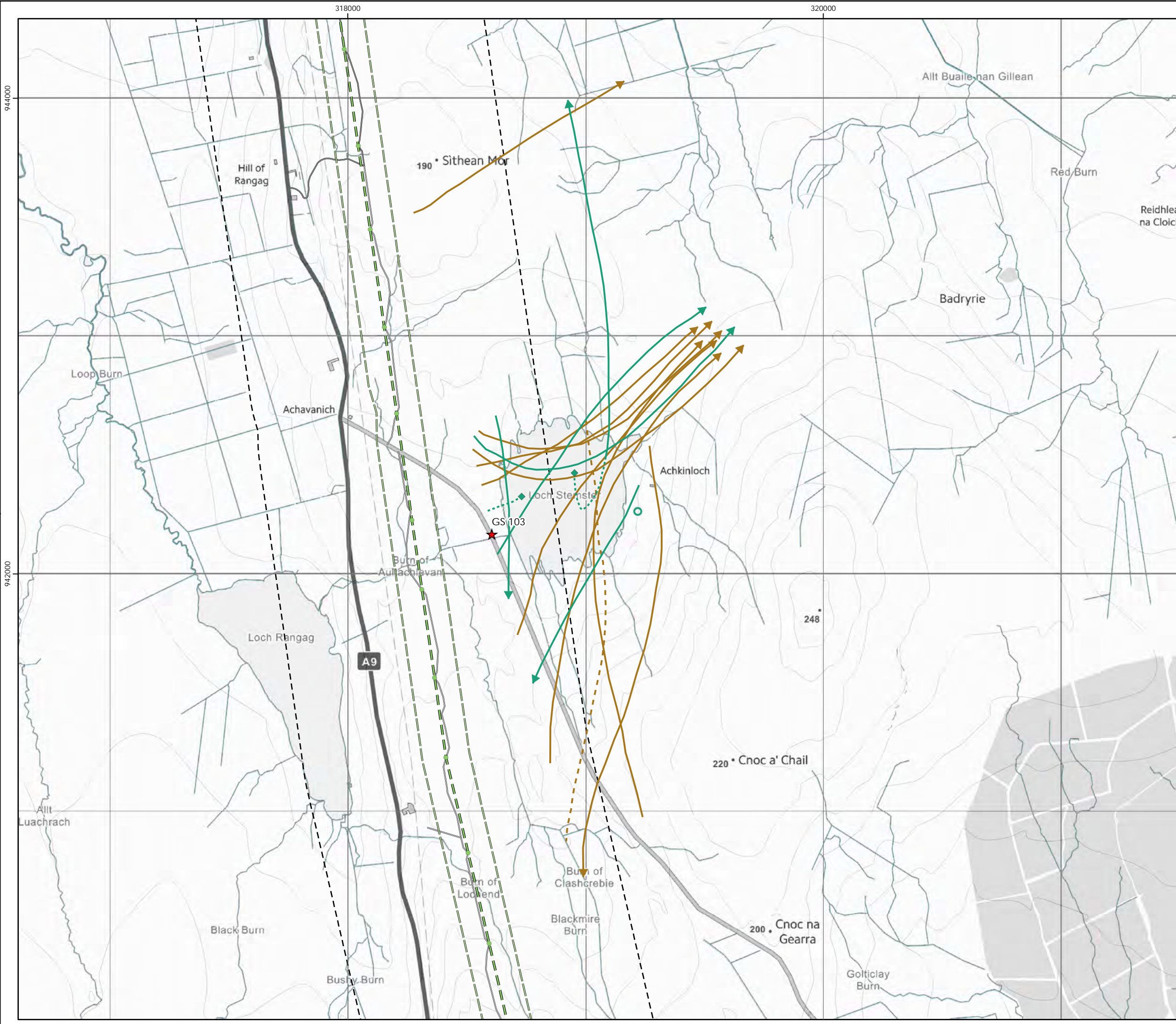
0 0.175 0.35 0.7
Kilometres



Scale @ A3:
1:15,000



© Crown copyright 2025. All rights reserved.
Ordnance survey licence number AC0000808122.

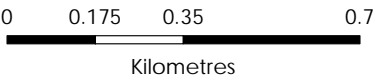
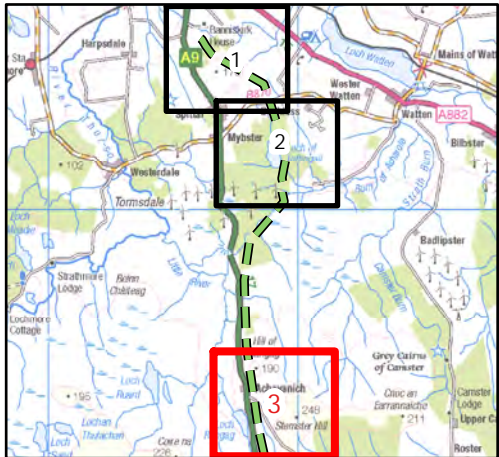


Beauly to Spittal



Figure 12d
Goose and Swans Roost Activity
Geese and swans - Map 3

- Key**
- OHL Route Alignment and Tracks**
- OHL Alignment
 - Limit of Deviation for OHL (LoD)
 - 500m buffer from LoD
 - Tower
 - Permanent access track
 - Temporary access track
 - Vantage Point
- Target species registrations**
- Greylag goose
 - Whooper goose
 - Unidentified goose
 - Unidentified yellow billed swan
 - Pink-footed goose
- Height Band**
- Below 5m height
 - 5 - 70m height
 - Above 70m height
 - On ground
 - Heard only



Scale @ A3:
1:15,000



© Crown copyright 2025. All rights reserved.
Ordnance survey licence number AC0000808122.



Beauly to Spittal



Figure 12e
Goose and Swans Roost Activity
Ducks - Map 2

Key

OHL Route Alignment and Tracks

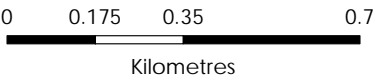
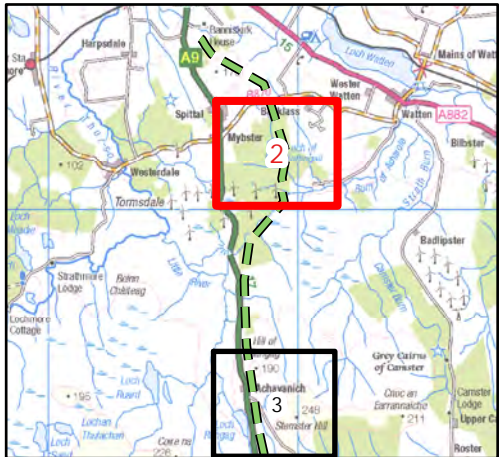
- OHL Alignment
- Limit of Deviation for OHL (LoD)
- 500m buffer from LoD
- Tower
- Permanent access track
- Temporary access track
- Vantage Point

Target species registrations

- Goldeneye
- Teal
- Common Scoter
- Tufted duck
- Wigeon

Height Band

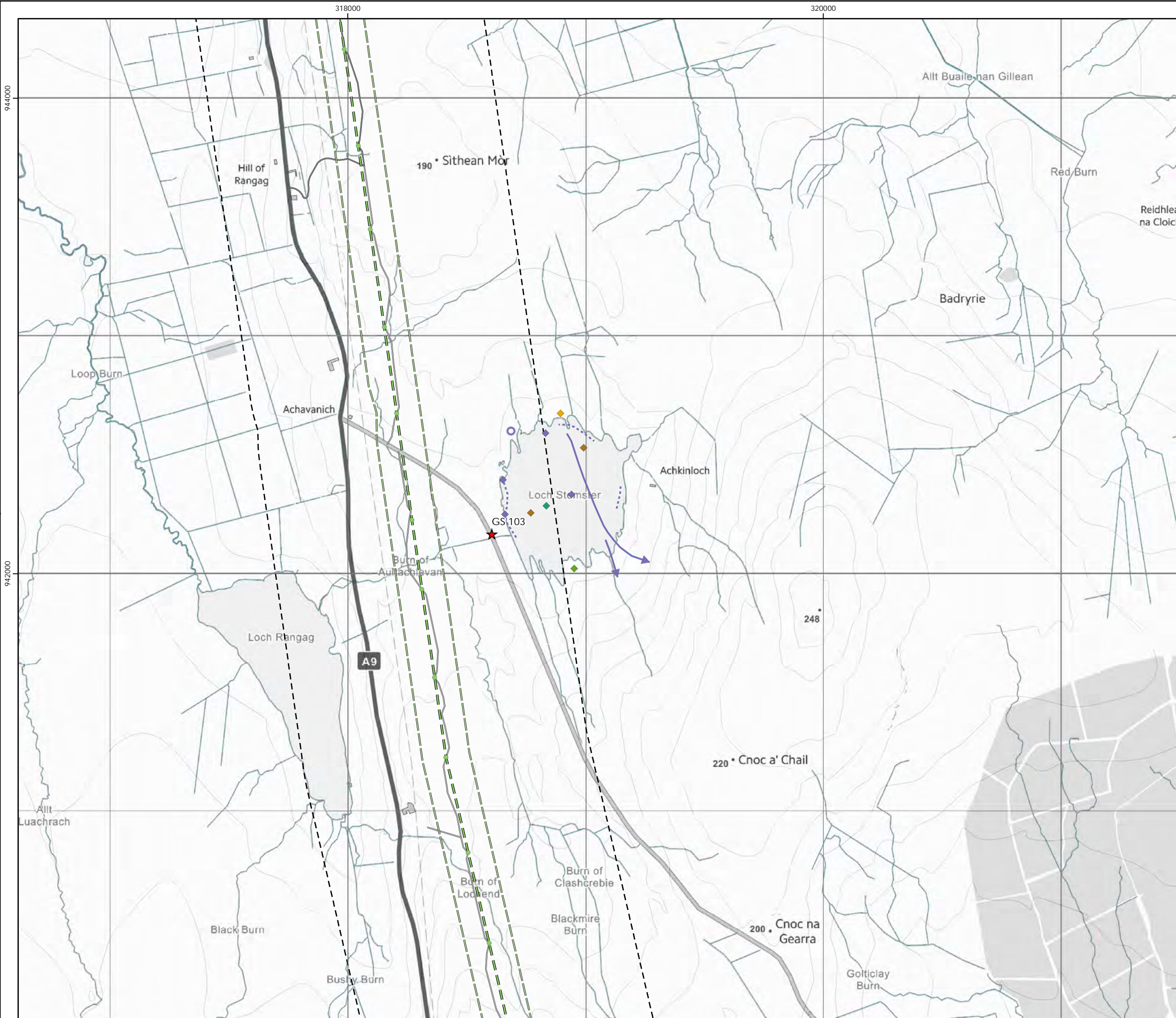
- Below 5m height
- 5 - 70m height
- Above 70m height
- On ground
- Heard only



Scale @ A3:
1:15,000



© Crown copyright 2025. All rights reserved.
Ordnance survey licence number AC0000808122.

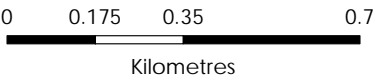
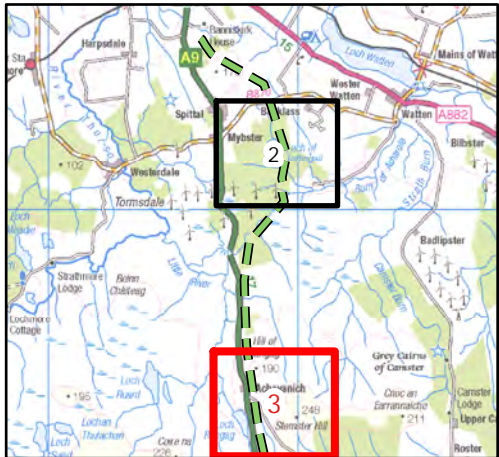


Beauly to Spittal



Figure 12e
Goose and Swans Roost Activity
Ducks - Map 3

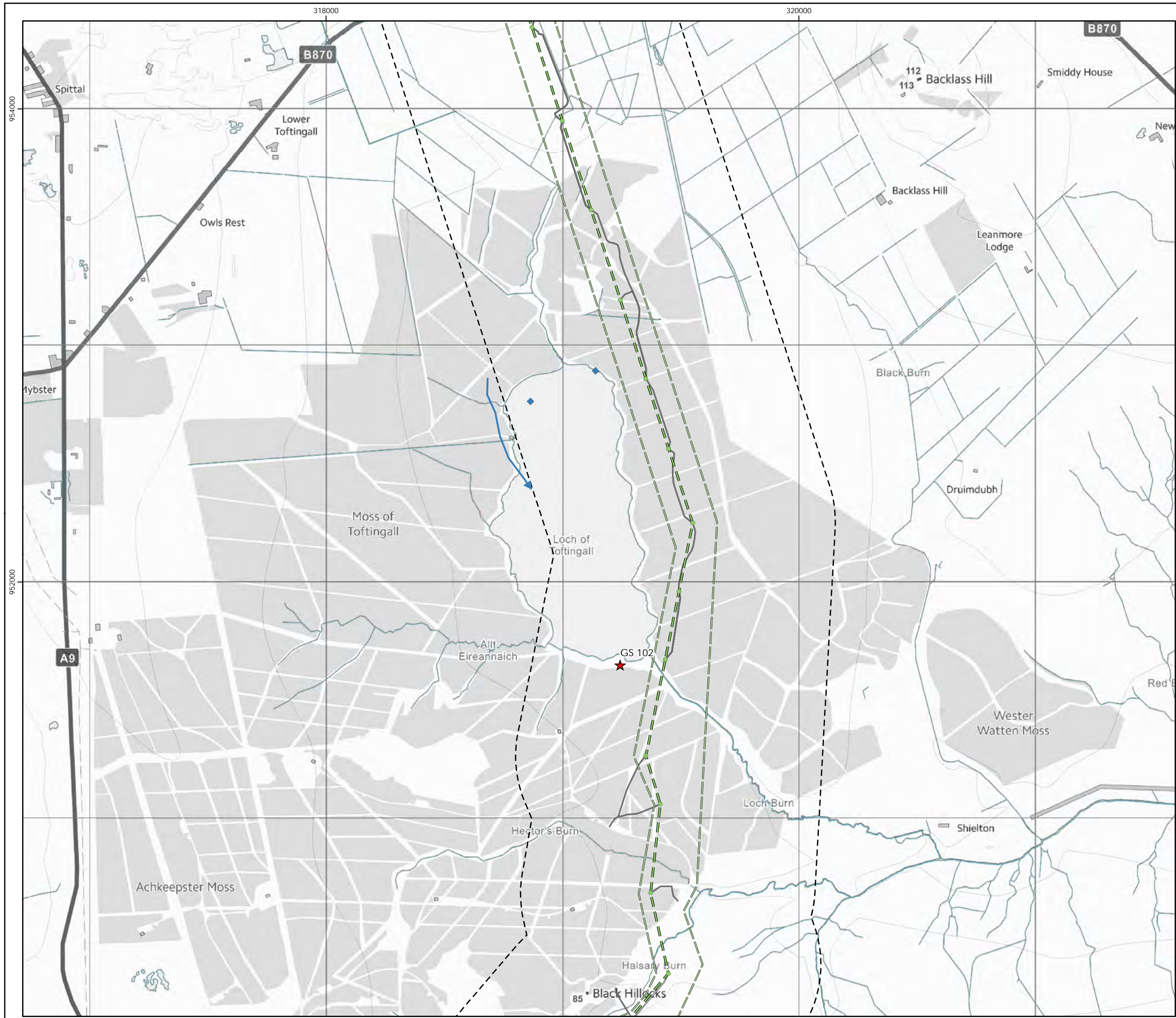
- Key**
- OHL Route Alignment and Tracks**
- OHL Alignment
 - Limit of Deviation for OHL (LoD)
 - 500m buffer from LoD
 - Tower
 - Permanent access track
 - Temporary access track
 - Vantage Point
- Target species registrations**
- Goldeneye
 - Teal
 - Common Scoter
 - Tufted duck
 - Wigeon
- Height Band**
- Below 5m height
 - 5 - 70m height
 - Above 70m height
 - On ground
 - Heard only



Scale @ A3:
1:15,000



© Crown copyright 2025. All rights reserved.
Ordnance survey licence number AC0000808122.

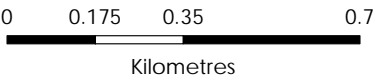
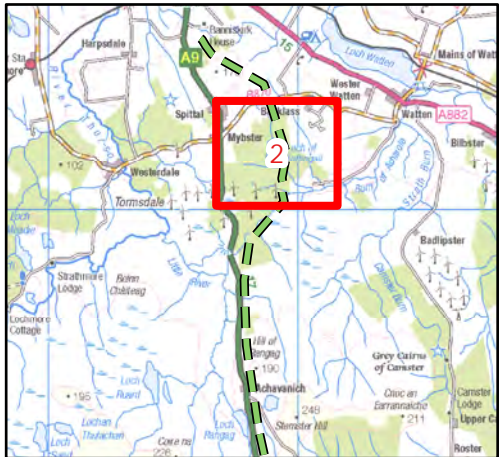


Beauly to Spittal



Figure 12f
Goose and Swans Roost Activity
Grouse, Divers and Seabirds -
Map 2

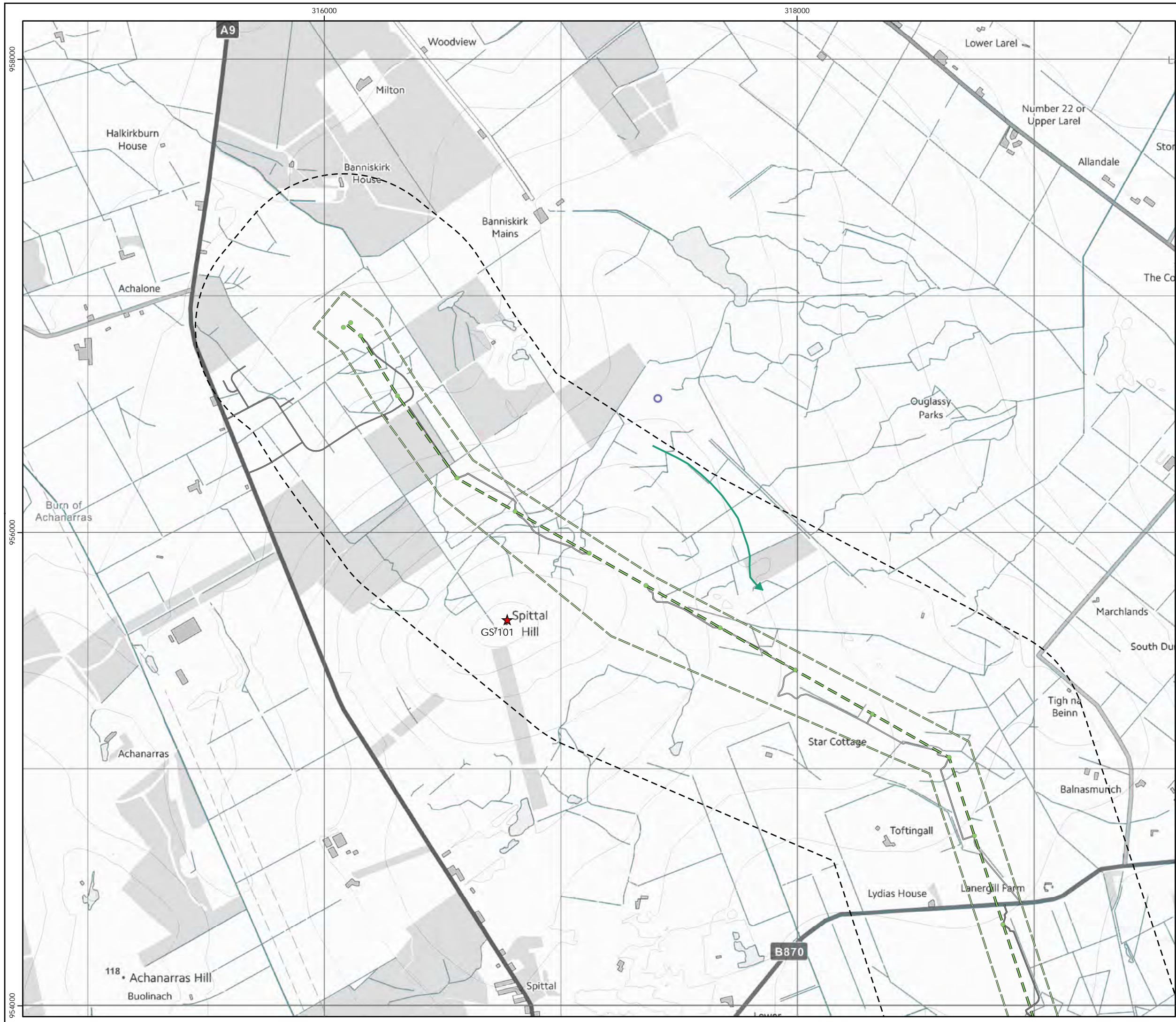
- Key**
- OHL Route Alignment and Tracks**
- OHL Alignment
 - Limit of Deviation for OHL (LoD)
 - 500m buffer from LoD
 - Tower
 - Permanent access track
 - Temporary access track
 - Vantage Point
- Target species registrations**
- Cormorant
- Height Band**
- Below 5m height
 - 5 - 70m height
 - Above 70m height
 - On ground
 - Heard only



Scale @ A3:
1:15,000



© Crown copyright 2025. All rights reserved.
Ordnance survey licence number AC0000808122.



Beauuly to Spittal



Figure 12g
Goose and Swans Roost Activity
Waders - Map 1

Key

OHL Route Alignment and Tracks

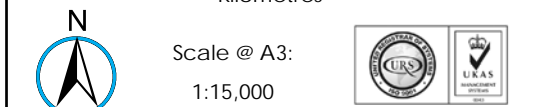
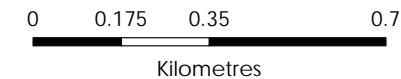
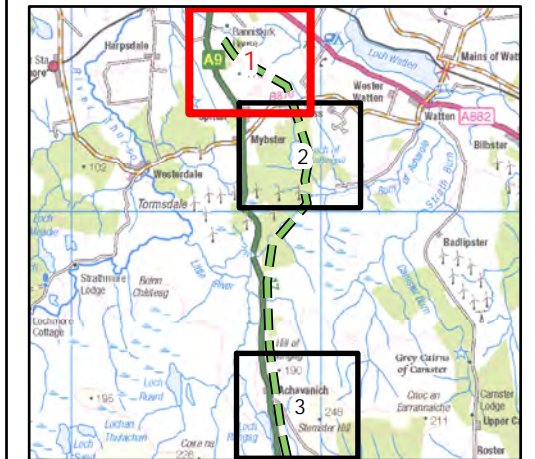
- OHL Alignment
- Limit of Deviation for OHL (LoD)
- 500m buffer from LoD
- Tower
- Permanent access track
- Temporary access track
- Vantage Point

Target species registrations

- Oysercatcher
- Lapwing
- Snipe
- Redshank
- Curlew

Height Band

- Below 5m height
- 5 - 70m height
- Above 70m height
- On ground
- Heard only



© Crown copyright 2025. All rights reserved.
Ordnance survey licence number AC0000808122.



Beauuly to Spittal



Figure 12g
Goose and Swans Roost Activity
Waders - Map 2

Key

OHL Route Alignment and Tracks

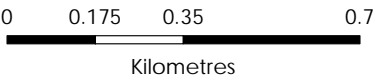
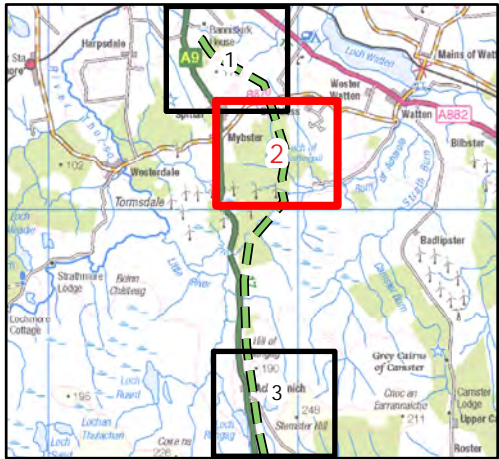
- OHL Alignment
- Limit of Deviation for OHL (LoD)
- 500m buffer from LoD
- Tower
- Permanent access track
- Temporary access track
- Vantage Point

Target species registrations

- Oysercatcher
- Lapwing
- Snipe
- Redshank
- Curlew

Height Band

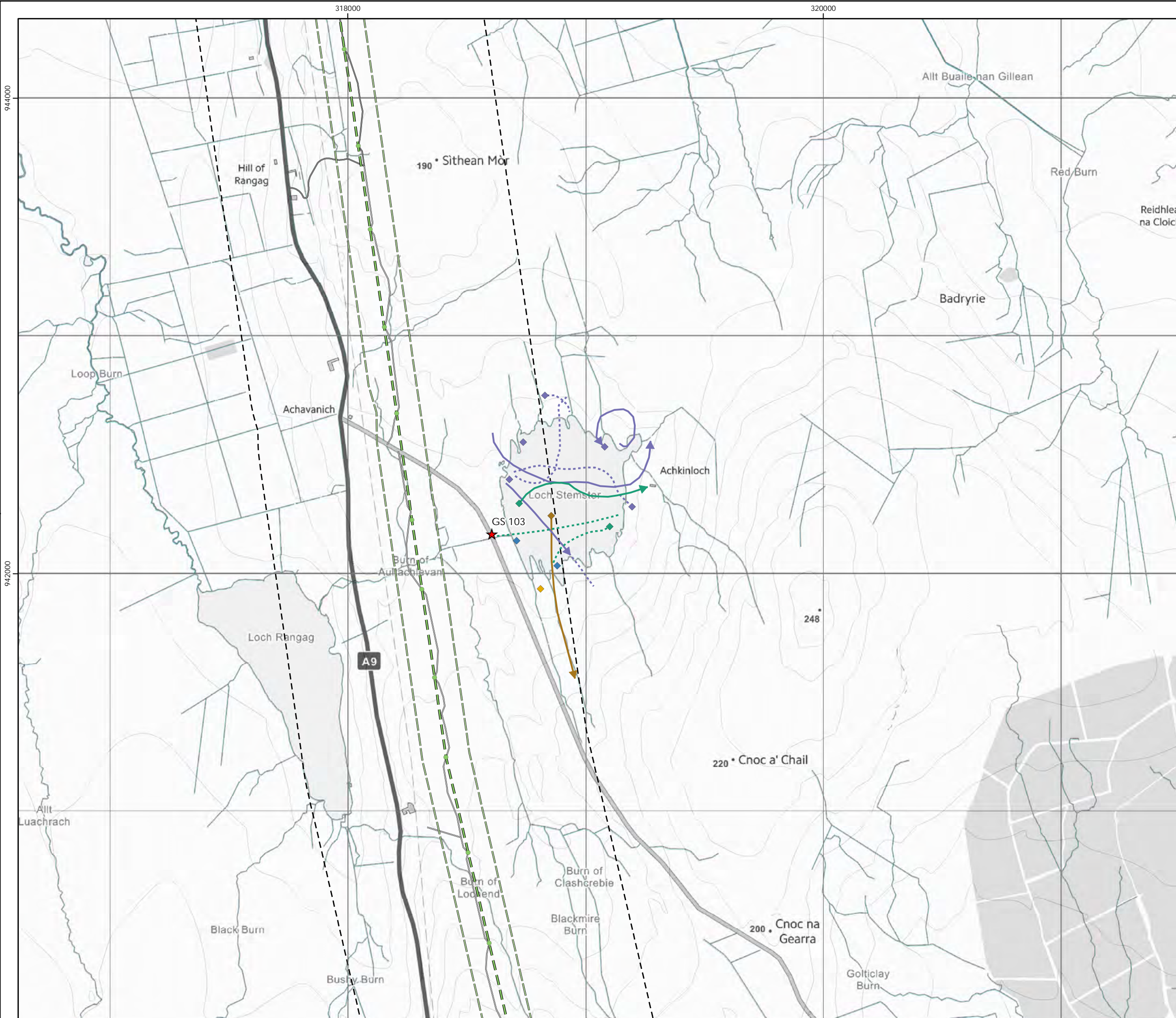
- Below 5m height
- 5 - 70m height
- Above 70m height
- On ground
- Heard only



Scale @ A3:
1:15,000



© Crown copyright 2025. All rights reserved.
Ordnance survey licence number AC0000808122.



Beauly to Spittal



Figure 12g
Goose and Swans Roost Activity
Waders - Map 3

Key

OHL Route Alignment and Tracks

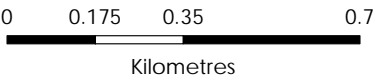
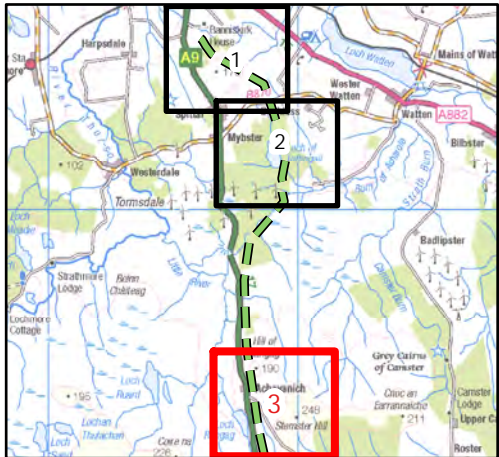
- OHL Alignment
- Limit of Deviation for OHL (LoD)
- 500m buffer from LoD
- Tower
- Permanent access track
- Temporary access track
- Vantage Point

Target species registrations

- Oysercatcher
- Lapwing
- Snipe
- Redshank
- Curlew

Height Band

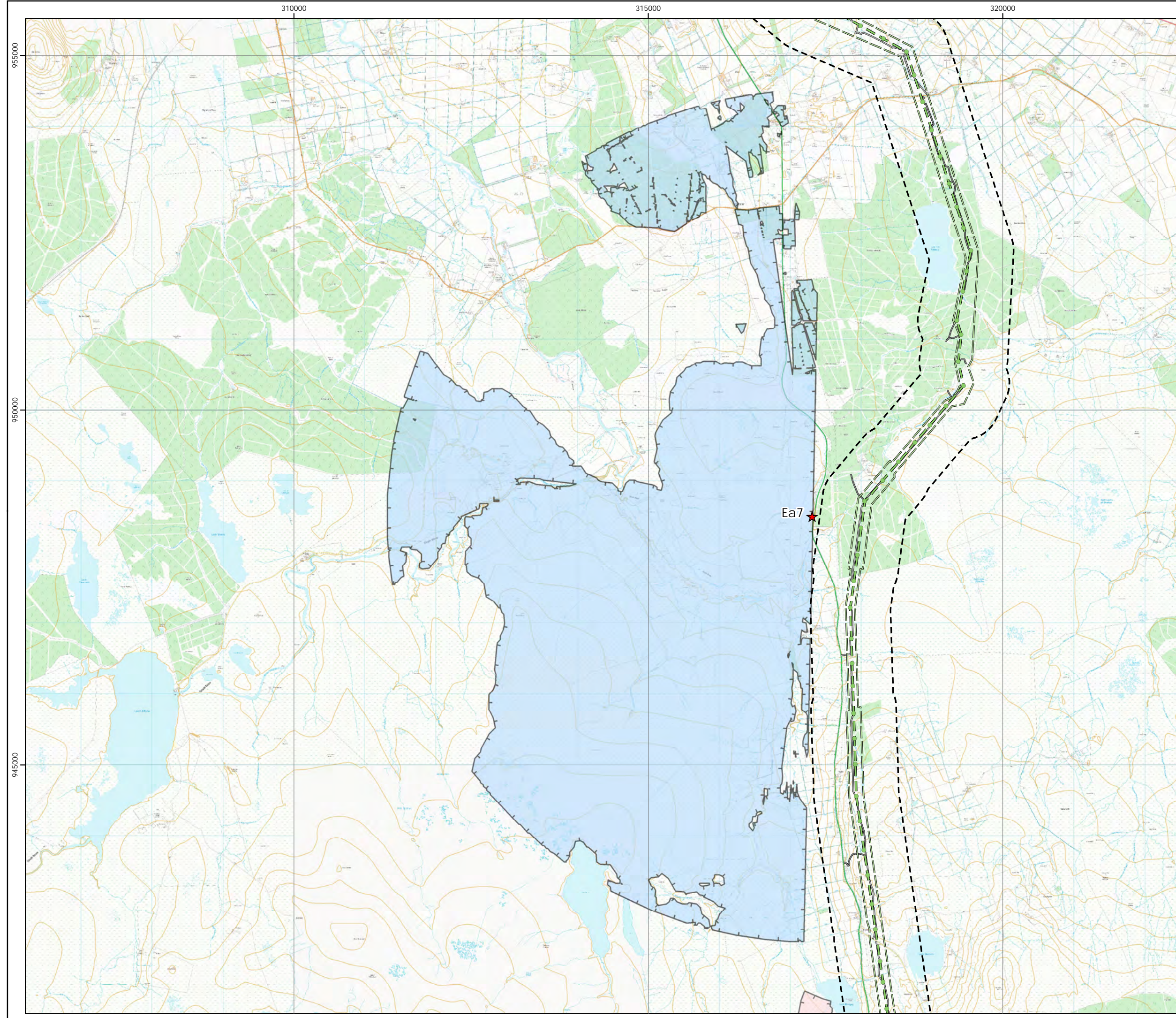
- Below 5m height
- 5 - 70m height
- Above 70m height
- On ground
- Heard only



Scale @ A3:
1:15,000



© Crown copyright 2025. All rights reserved.
Ordnance survey licence number AC0000808122.



Beauly to Spittal



Figure 13
Raptor Winter Roost
VP Locations and Viewsheds
Map 1

Key

OHL Route Alignment and Tracks

- OHL Alignment
- Limit of Deviation for OHL (LoD)
- 500m buffer from LoD
- Tower
- Permanent access track
- Temporary access track
- Vantage Point

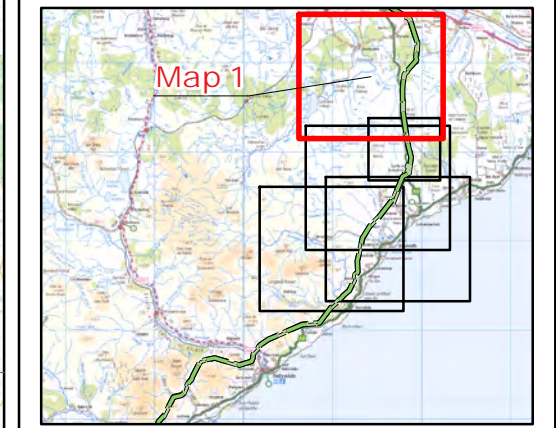
VP Viewshed

- Ea7
- HH4

Generated using Ordnance Survey's Terrain 50 dataset that does not take into account the screening effects of buildings.

Observer height 1.5m above ground.
Viewshed height modelled 10m above ground.

Forestry has been used to screen visibility at a height of 10m using the Ordnance Survey OpenMapLocal Woodland dataset.



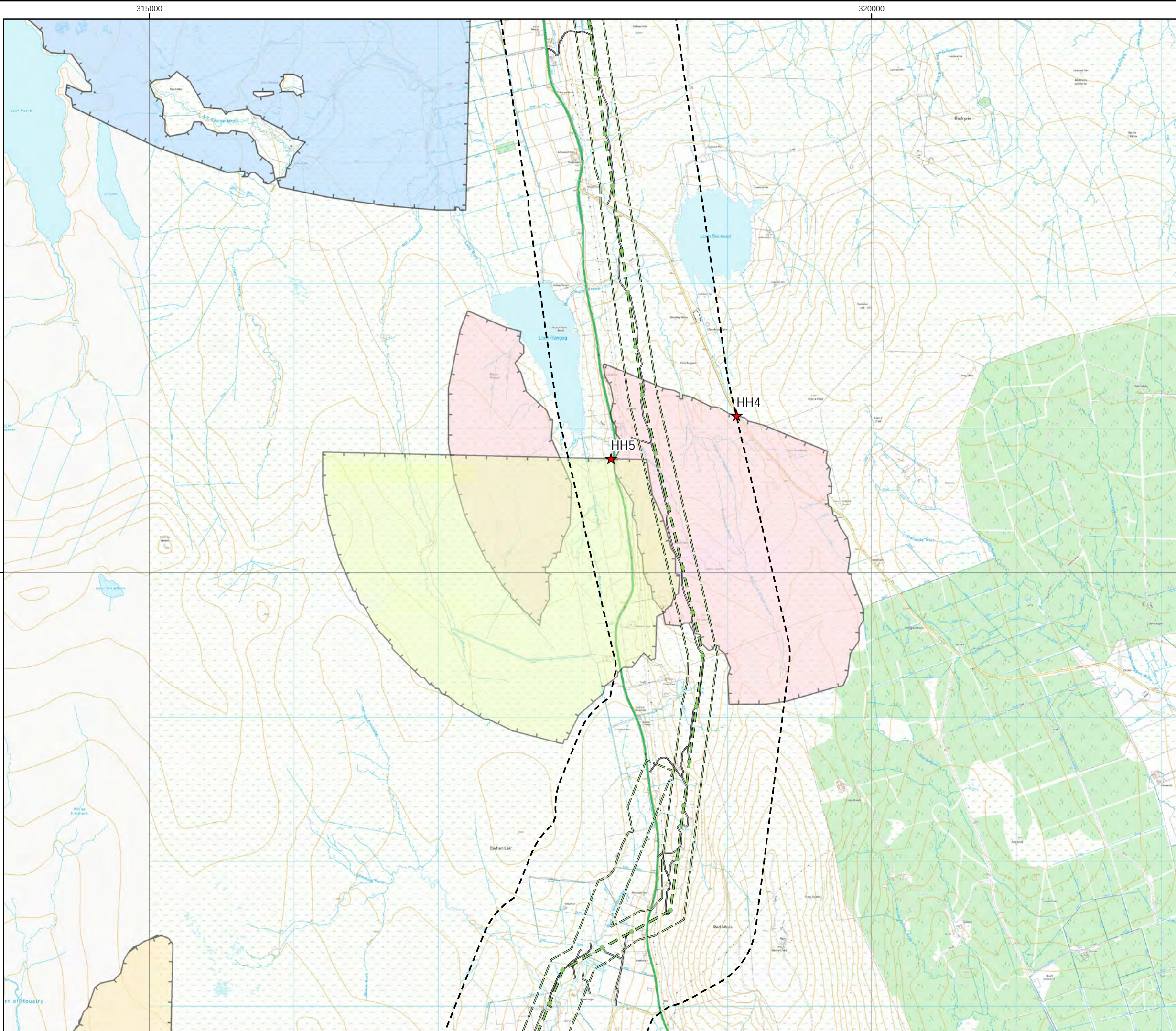
0 0.5 1
Kilometres

Scale @ A3:
1:50,000

N

UKAS

© Crown copyright 2025. All rights reserved.
Ordnance survey licence number AC0000808122.



Beauly to Spittal



Figure 13
Raptor Winter Roost
VP Locations and Viewsheds
Map 2

Key

OHL Route Alignment and Tracks

- OHL Alignment
- Limit of Deviation for OHL (LoD)
- 500m buffer from LoD
- Tower
- Permanent access track
- Temporary access track
- Vantage Point

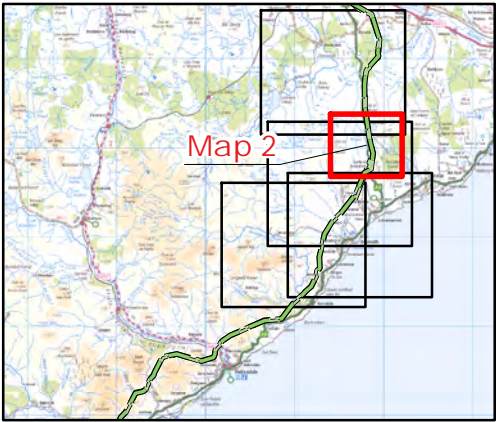
VP Viewshed

Ea6	HH4
Ea7	HH5

Generated using Ordnance Survey's Terrain 50 dataset that does not take into account the screening effects of buildings.

Observer height 1.5m above ground.
Viewshed height modelled 10m above ground.

Forestry has been used to screen visibility at a height of 10m using the Ordnance Survey OpenMapLocal Woodland dataset.

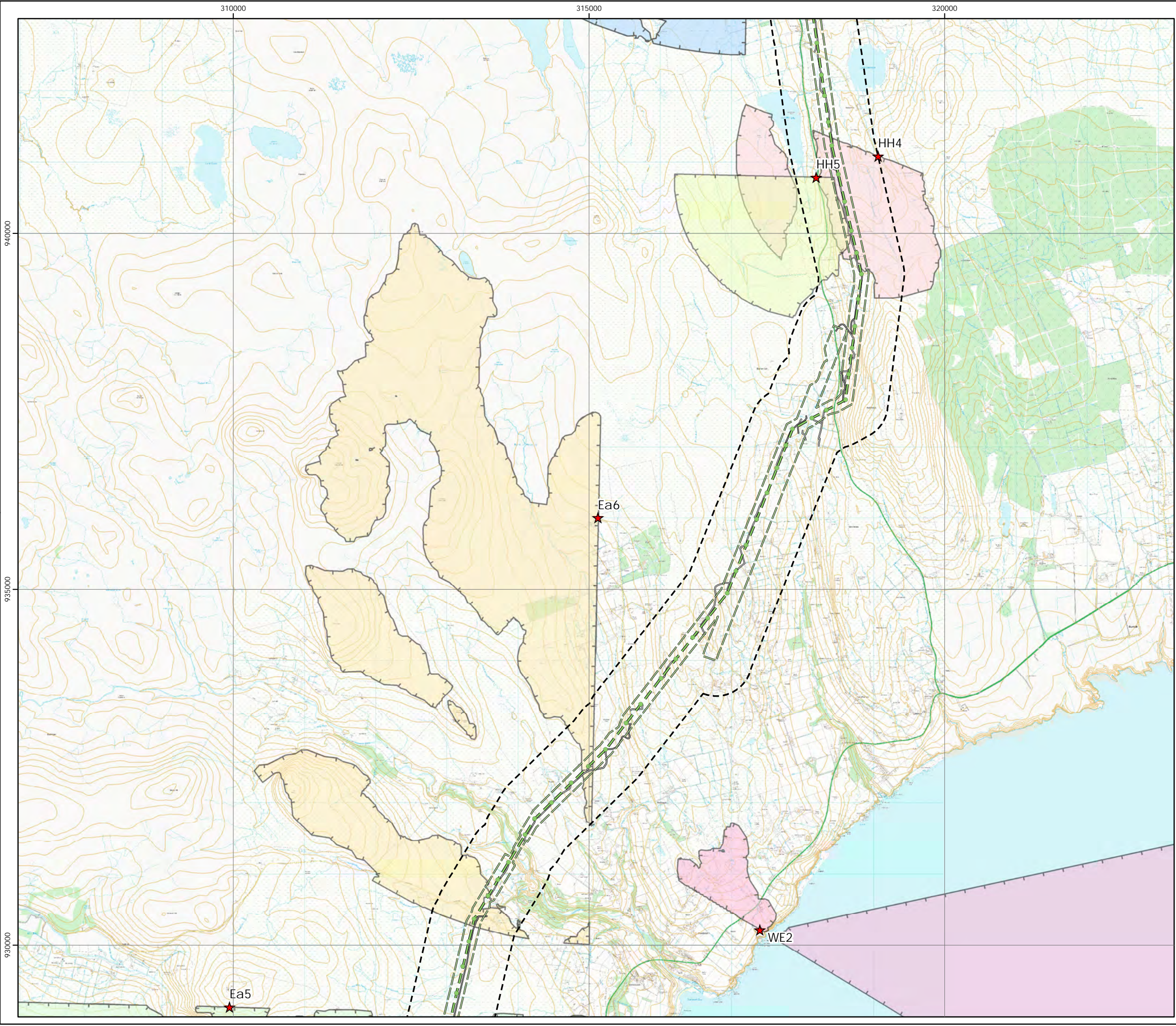


0 0.5 1
Kilometres

N

Scale @ A3:
1:25,000

© Crown copyright 2025. All rights reserved.
Ordnance survey licence number AC0000808122.



Beauly to Spittal



Figure 13
Raptor Winter Roost
VP Locations and Viewsheds
Map 3

Key

OHL Route Alignment and Tracks

- OHL Alignment
- Limit of Deviation for OHL (LoD)
- 500m buffer from LoD
- Tower
- Permanent access track
- Temporary access track
- Vantage Point

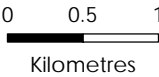
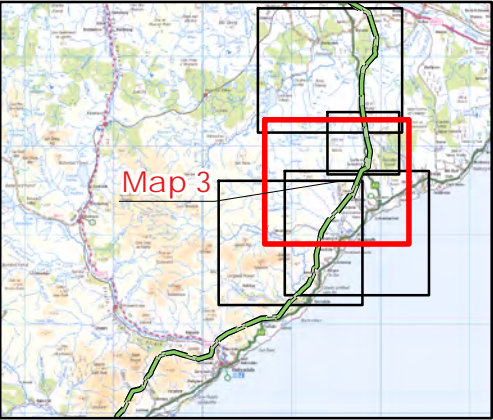
VP Viewshed

Ea5	HH4
Ea6	HH5
Ea7	WE2

Generated using Ordnance Survey's Terrain 50 dataset that does not take into account the screening effects of buildings.

Observer height 1.5m above ground.
Viewshed height modelled 10m above ground.

Forestry has been used to screen visibility at a height of 10m using the Ordnance Survey OpenMapLocal Woodland dataset.



Scale @ A3:
1:50,000



© Crown copyright 2025. All rights reserved.
Ordnance survey licence number AC0000808122.