

Beauly to Spittal



Figure 3
Vantage Point Locations
and Viewsheds - Map 5

- Key**
- OHL Route Alignment and Tracks**
- OHL Alignment
 - Limit of Deviation for OHL (LoD)
 - 500m buffer from LoD
 - Tower
 - Permanent access track
 - Temporary access track
 - Active Vantage Point
- VP Viewshed**
- 10
 - 11
 - 12
 - 13
 - 14

Generated using Ordnance Survey's Terrain 50 dataset that does not take into account the screening effects of buildings.

Observer height 1.5m above ground.
Viewshed height modelled 10m above ground.

Forestry has been used to screen visibility at a height of 10m using the Ordnance Survey OpenMapLocal Woodland dataset.



00.250.51

Kilometres

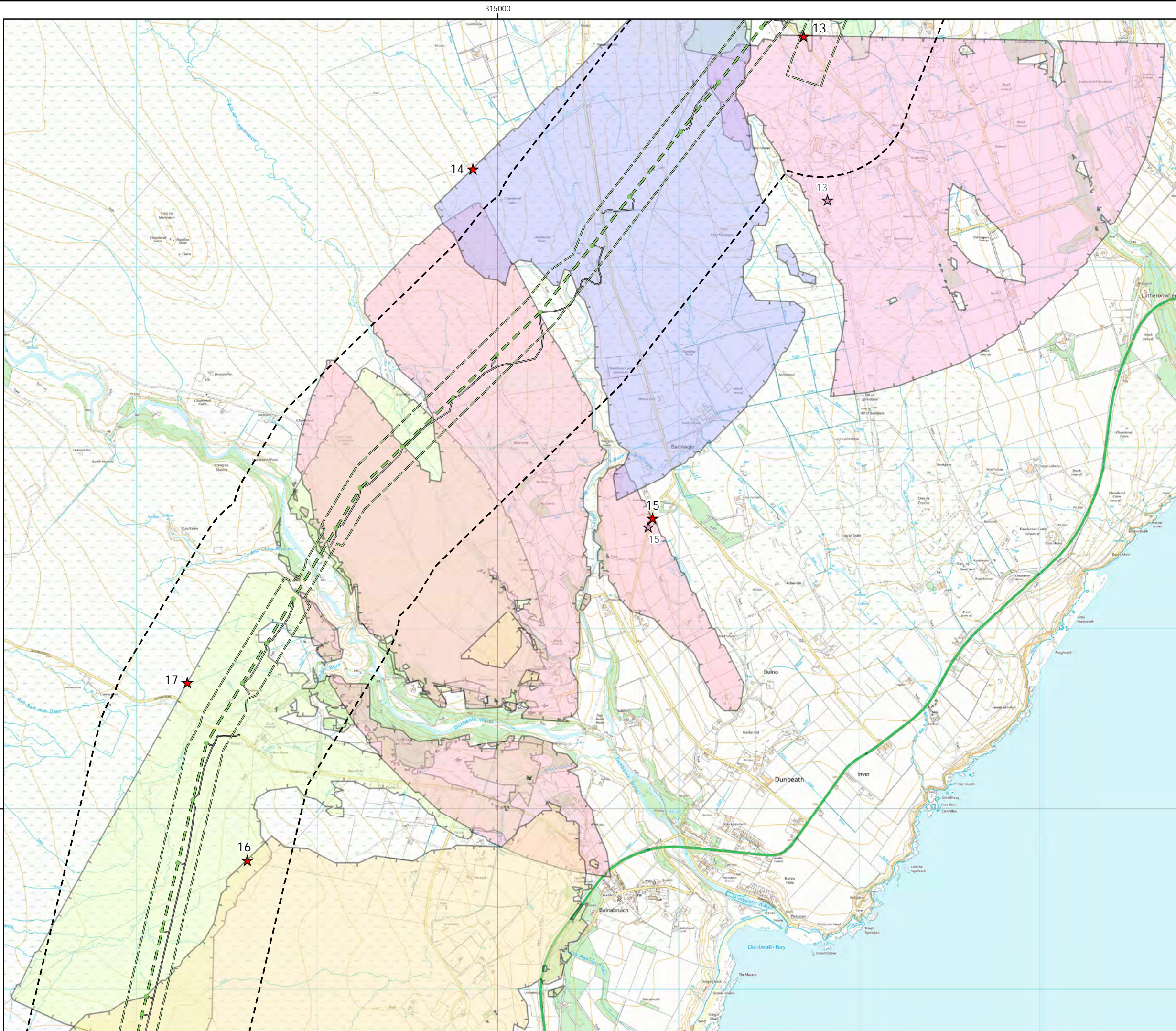
N

Scale @ A3:
1:20,000

UKAS

UKAS

© Crown copyright 2025. All rights reserved.
Ordnance survey licence number AC0000808122.



Beauly to Spittal



Figure 3
Vantage Point Locations
and Viewsheds - Map 6

- Key**
- OHL Route Alignment and Tracks**
- OHL Alignment
 - Limit of Deviation for OHL (LoD)
 - 500m buffer from LoD
 - Tower
 - Permanent access track
 - Temporary access track
 - Active Vantage Point
 - Relocated Vantage Point
- VP Viewshed**
- 12
 - 13
 - 14
 - 15
 - 16
 - 17

Generated using Ordnance Survey's Terrain 50 dataset that does not take into account the screening effects of buildings.

Observer height 1.5m above ground.
Viewshed height modelled 10m above ground.

Forestry has been used to screen visibility at a height of 10m using the Ordnance Survey OpenMapLocal Woodland dataset.



00.250.51

Kilometres

N

Scale @ A3:
1:20,000

© Crown copyright 2025. All rights reserved.
Ordnance survey licence number AC0000808122.

Beauly to Spittal



Figure 3
Vantage Point Locations
and Viewsheds - Map 7

Key

OHL Route Alignment and Tracks

- OHL Alignment
- Limit of Deviation for OHL (LoD)
- 500m buffer from LoD
- Tower
- Permanent access track
- Temporary access track
- Active Vantage Point

VP Viewshed

- 16
- 17
- 18
- 19
- 20
- 21

Generated using Ordnance Survey's Terrain 50 dataset that does not take into account the screening effects of buildings.

Observer height 1.5m above ground.
Viewshed height modelled 10m above ground.

Forestry has been used to screen visibility at a height of 10m using the Ordnance Survey OpenMapLocal Woodland dataset.



00.250.51

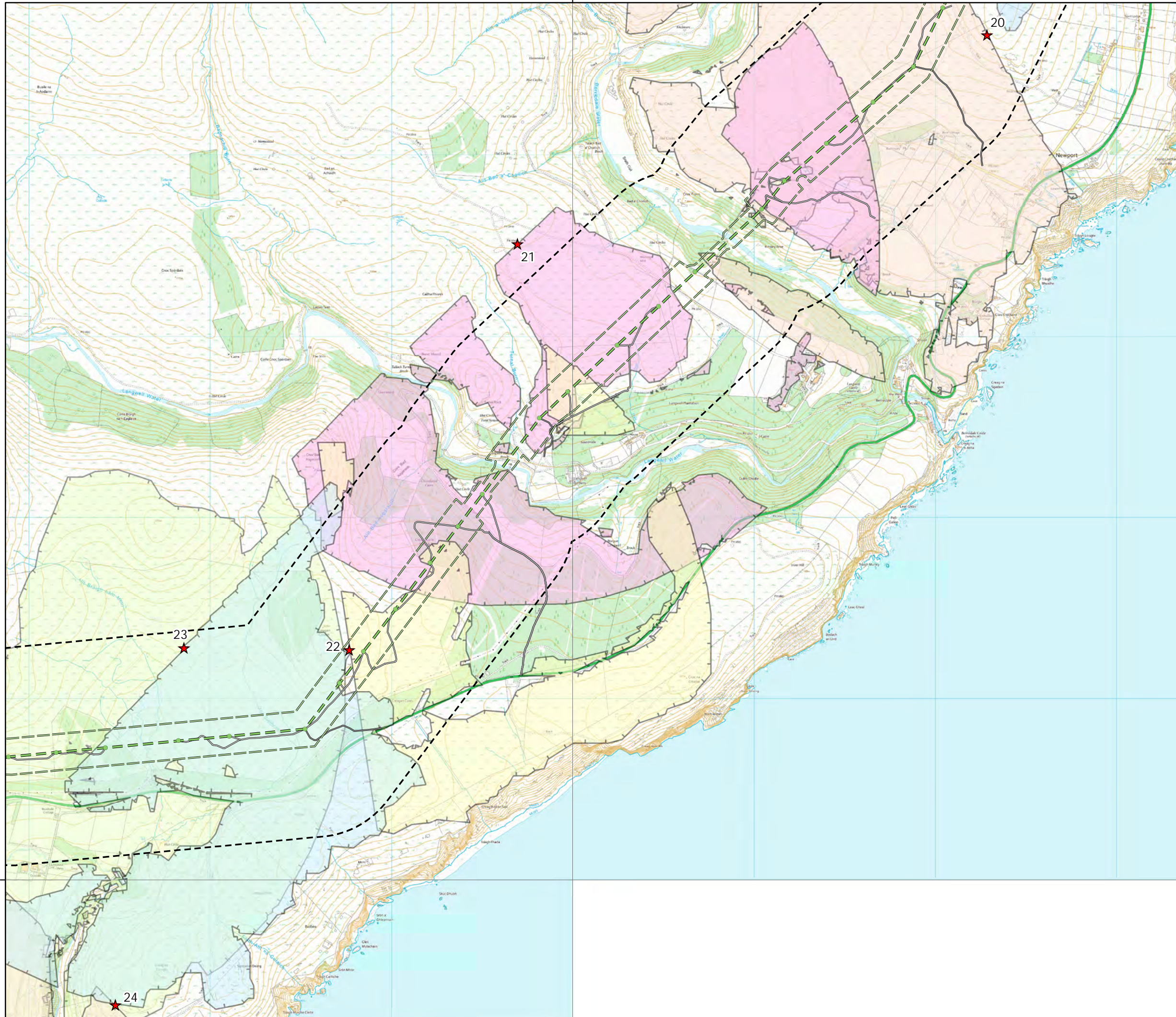
Kilometres

N

Scale @ A3:
1:20,000

© Crown copyright 2025. All rights reserved.
Ordnance survey licence number AC0000808122.

310000



920000

Beaulieu to Spittal



Figure 3
Vantage Point Locations
and Viewsheds - Map 8

Key

OHL Route Alignment and Tracks

- OHL Alignment
- Limit of Deviation for OHL (LoD)
- 500m buffer from LoD
- Tower
- Permanent access track
- Temporary access track
- Active Vantage Point

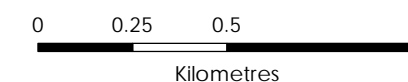
VP Viewshed

- 19
- 20
- 21
- 22
- 23
- 24
- 59

Generated using Ordnance Survey's Terrain 50 dataset that does not take into account the screening effects of buildings.

Observer height 1.5m above ground.
Viewshed height modelled 10m above ground.

Forestry has been used to screen visibility at a height of 10m using the Ordnance Survey OpenMapLocal Woodland dataset.



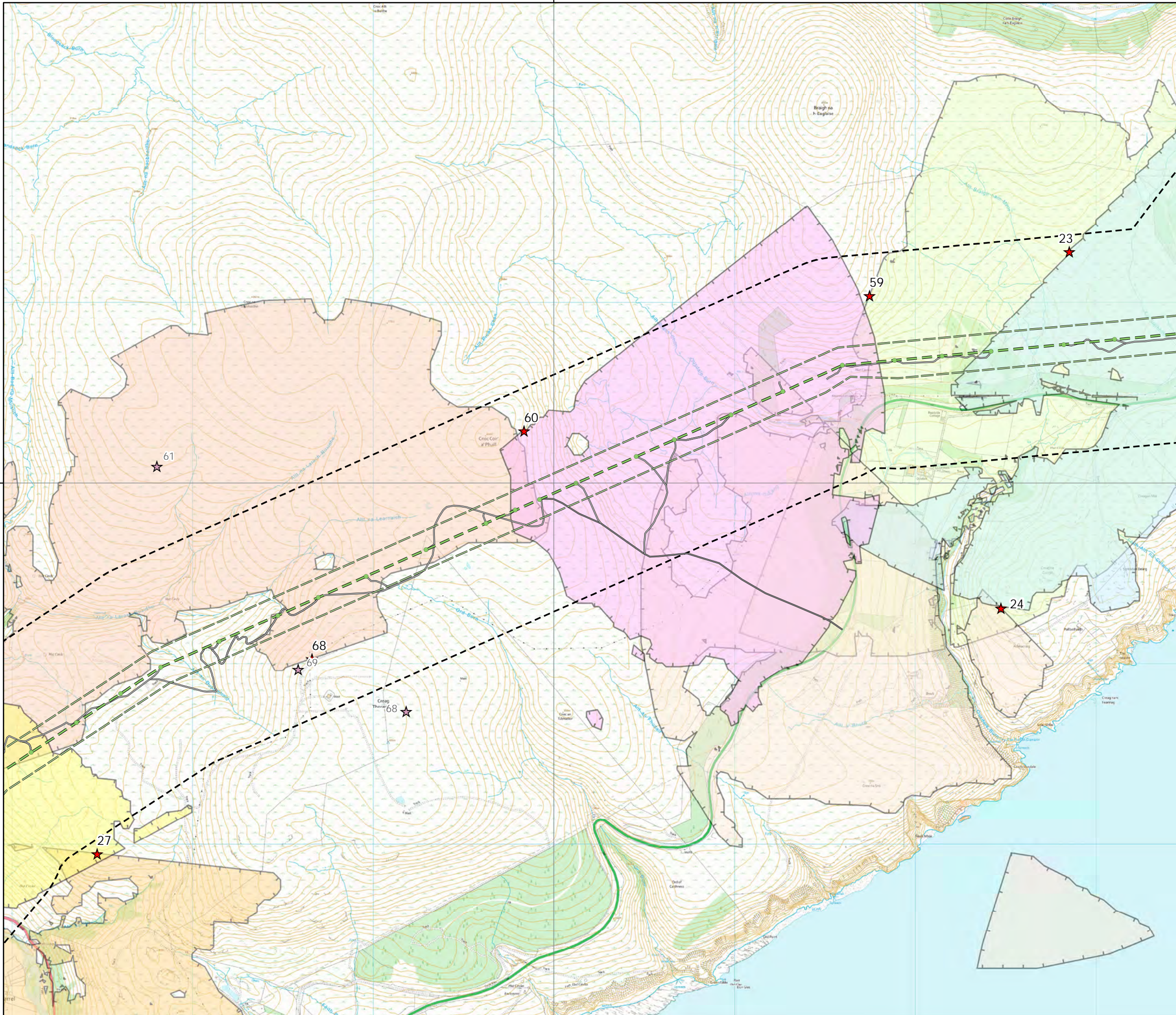
Scale @ A3:
1:20,000



© Crown copyright 2025. All rights reserved.
Ordnance survey licence number AC0000808122.

305000

920000



Beauly to Spittal



Figure 3
Vantage Point Locations
and Viewsheds - Map 9

Key

OHL Route Alignment and Tracks

- OHL Alignment
- Limit of Deviation for OHL (LoD)
- 500m buffer from LoD
- Tower
- Permanent access track
- Temporary access track
- Active Vantage Point
- Relocated Vantage Point

VP Viewshed

- 21
- 23
- 24
- 27
- 59
- 60
- 62
- 68

Generated using Ordnance Survey's Terrain 50 dataset that does not take into account the screening effects of buildings.

Observer height 1.5m above ground.
Viewshed height modelled 10m above ground.

Forestry has been used to screen visibility at a height of 10m using the Ordnance Survey OpenMapLocal Woodland dataset.



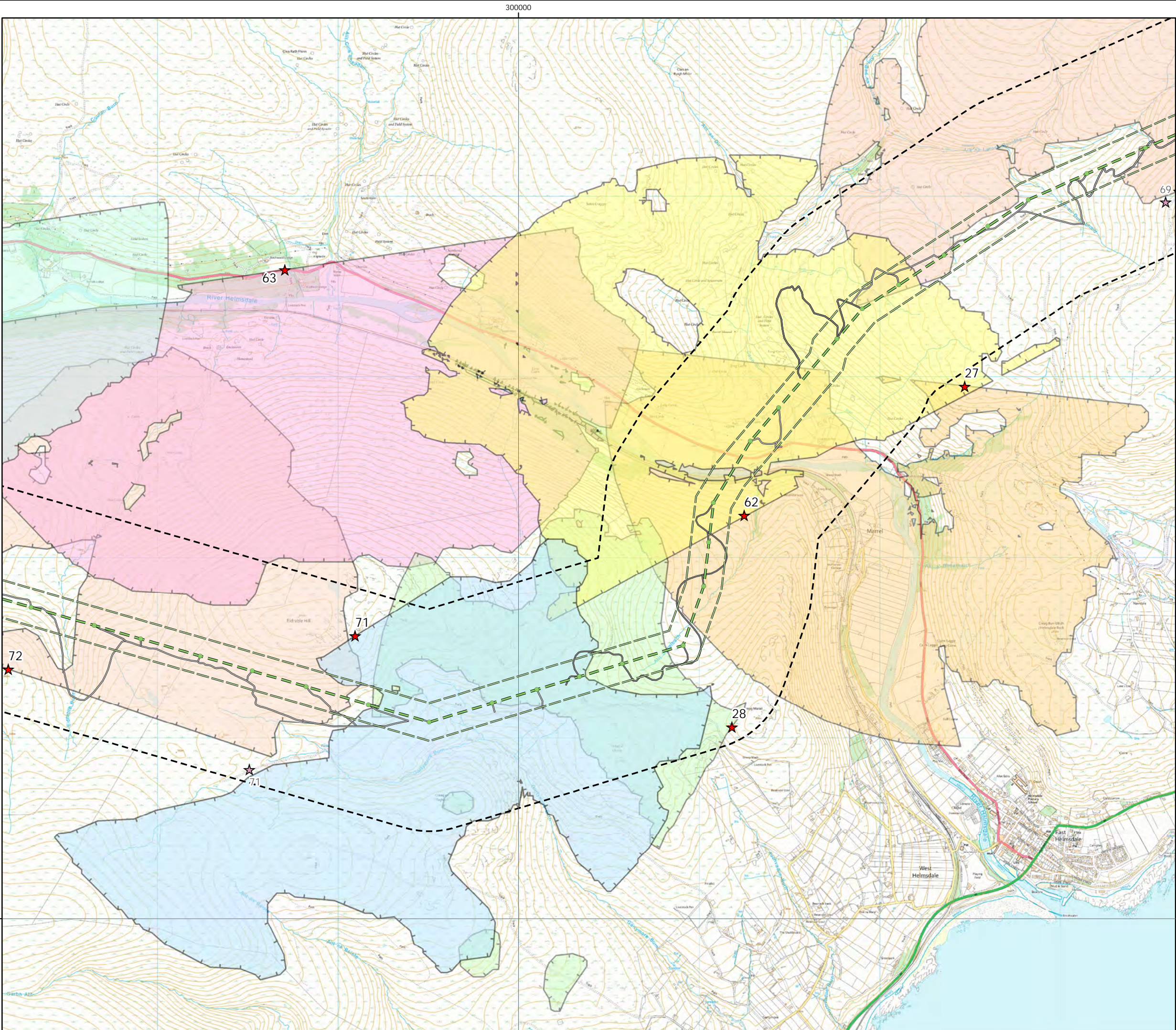
0 0.25 0.5 1
Kilometres

N

Scale @ A3:
1:20,000

UKAS

© Crown copyright 2025. All rights reserved.
Ordnance survey licence number AC0000808122.



Beaulieu to Spittal



Figure 3
Vantage Point Locations
and Viewsheds - Map 10

- Key**
- OHL Route Alignment and Tracks**
- OHL Alignment
 - Limit of Deviation for OHL (LoD)
 - 500m buffer from LoD
 - Tower
 - Permanent access track
 - Temporary access track
 - Active Vantage Point
 - Relocated Vantage Point

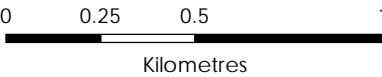
VP Viewshed

- 27
- 28
- 62
- 63
- 68
- 69
- 71
- 72

Generated using Ordnance Survey's Terrain 50 dataset that does not take into account the screening effects of buildings.

Observer height 1.5m above ground.
Viewshed height modelled 10m above ground.

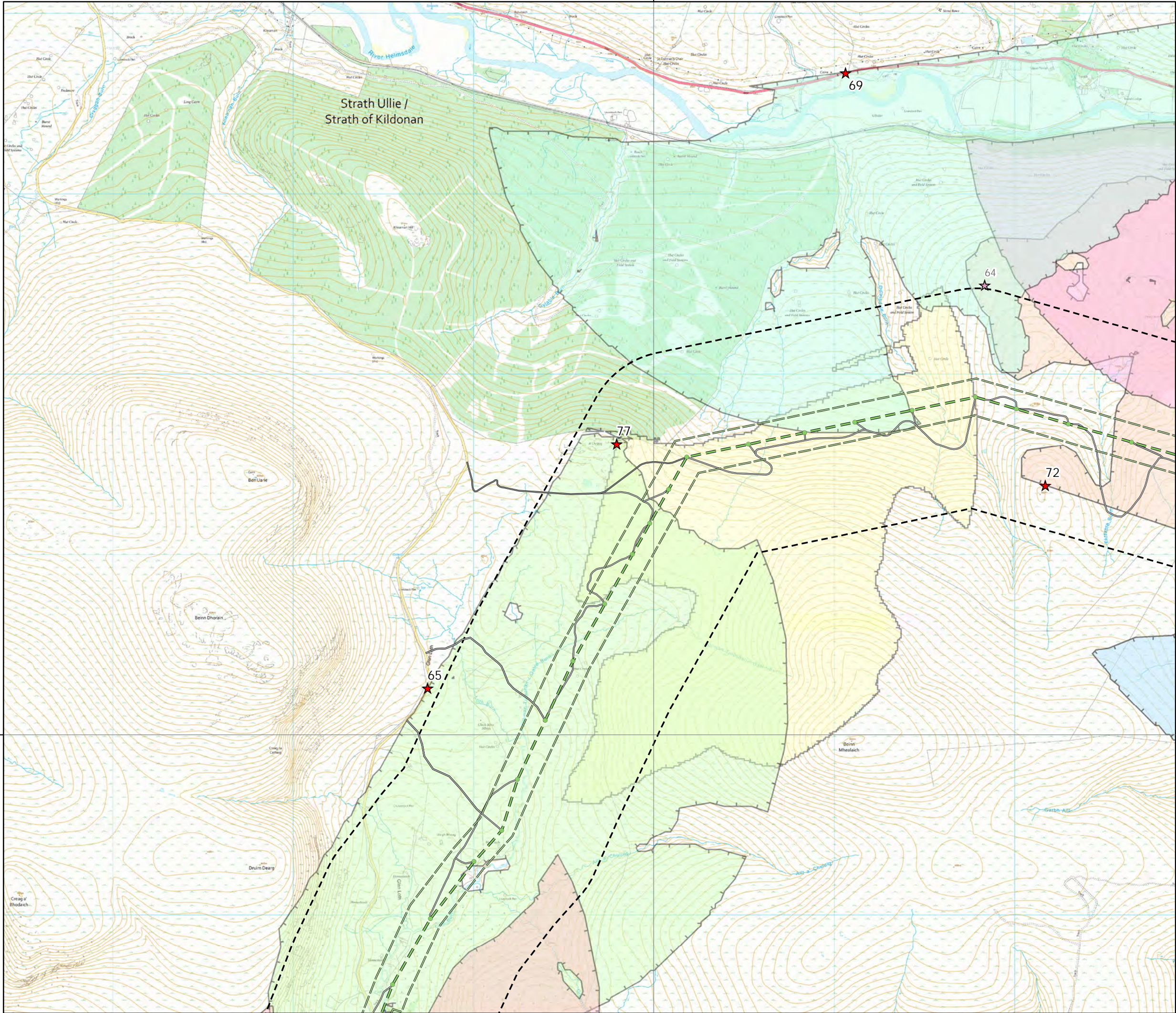
Forestry has been used to screen visibility at a height of 10m using the Ordnance Survey OpenMapLocal Woodland dataset.



Scale @ A3:
1:20,000



© Crown copyright 2025. All rights reserved.
Ordnance survey licence number AC0000808122.



Beauly to Spittal



Figure 3
Vantage Point Locations
and Viewsheds - Map 11

Key

OHL Route Alignment and Tracks

- OHL Alignment
- Limit of Deviation for OHL (LoD)
- 500m buffer from LoD
- Tower
- Permanent access track
- Temporary access track
- Active Vantage Point
- Relocated Vantage Point

VP Viewshed

- 63
- 65
- 66
- 69
- 71
- 72
- 77

Generated using Ordnance Survey's Terrain 50 dataset that does not take into account the screening effects of buildings.

Observer height 1.5m above ground.
Viewshed height modelled 10m above ground.

Forestry has been used to screen visibility at a height of 10m using the Ordnance Survey OpenMapLocal Woodland dataset.

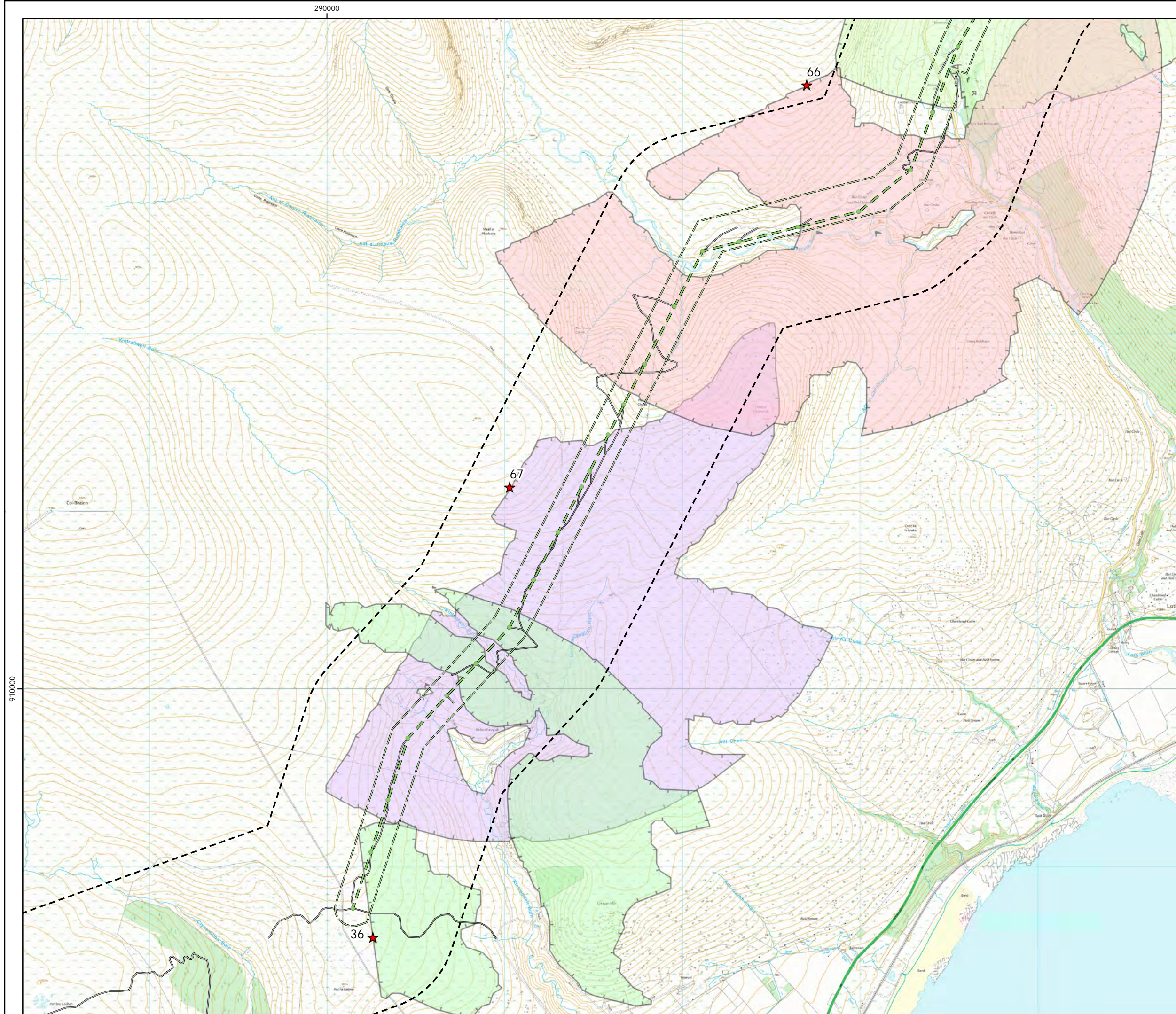


0 0.25 0.5 1
Kilometres

N

Scale @ A3:
1:20,000

© Crown copyright 2025. All rights reserved.
Ordnance survey licence number AC0000808122.



Beaulieu to Spittal



Figure 3
Vantage Point Locations
and Viewsheds - Map 12

- Key**
- OHL Route Alignment and Tracks**
- OHL Alignment
 - Limit of Deviation for OHL (LoD)
 - 500m buffer from LoD
 - Tower
 - Permanent access track
 - Temporary access track
 - Active Vantage Point
- VP Viewshed**
- 36
 - 65
 - 66
 - 67

Generated using Ordnance Survey's Terrain 50 dataset that does not take into account the screening effects of buildings.

Observer height 1.5m above ground.
Viewshed height modelled 10m above ground.

Forestry has been used to screen visibility at a height of 10m using the Ordnance Survey OpenMapLocal Woodland dataset.



00.250.51

Kilometres

N

Scale @ A3:
1:20,000

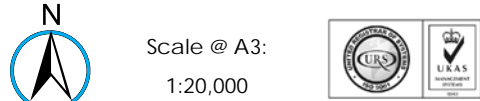
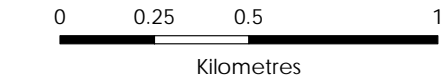
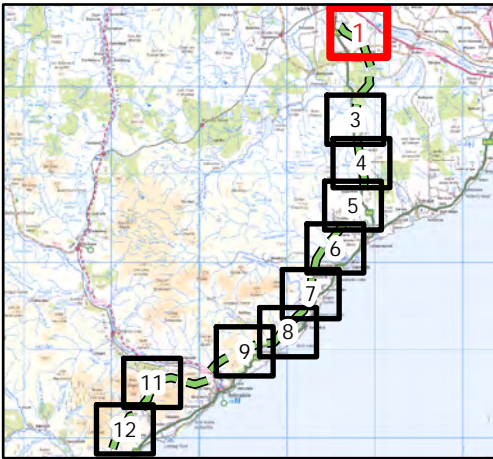
© Crown copyright 2025. All rights reserved.
Ordnance survey licence number AC0000808122.

Beauly to Spittal

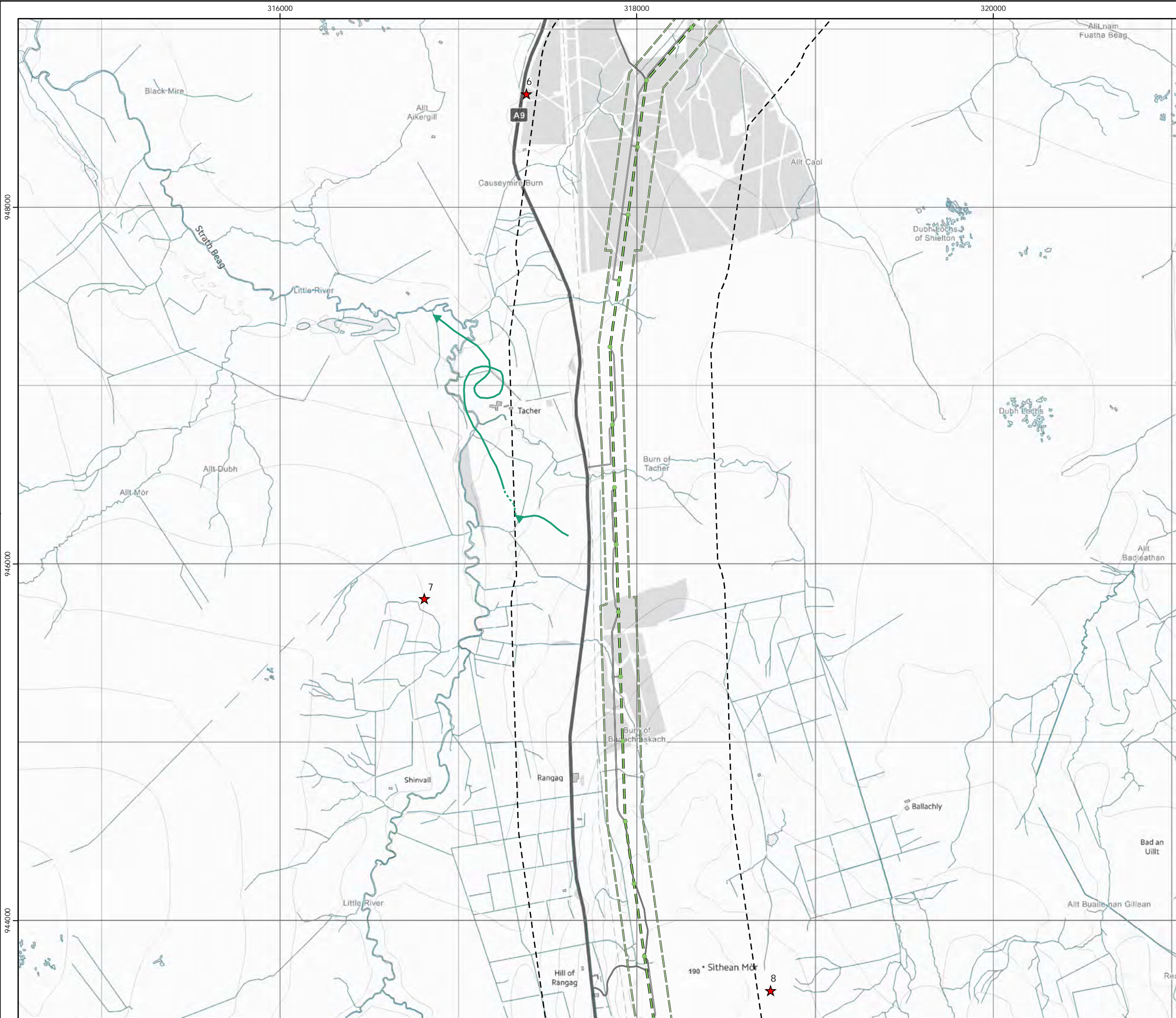


Figure 4a
Vantage Point Activity
Red kite - Map 1

- Key**
- OHL Route Alignment and Tracks**
- OHL Alignment
 - Limit of Deviation for OHL (LoD)
 - 500m buffer from LoD
 - Tower
 - Permanent access track
 - Temporary access track
 - Vantage Point
- Target species registrations**
- Red kite
- Height Band**
- Below 5m height
 - 5 - 70m height
 - Above 70m height
 - On ground
 - Heard only



© Crown copyright 2025. All rights reserved.
Ordnance survey licence number AC0000808122.

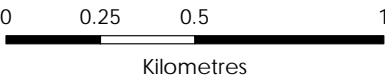
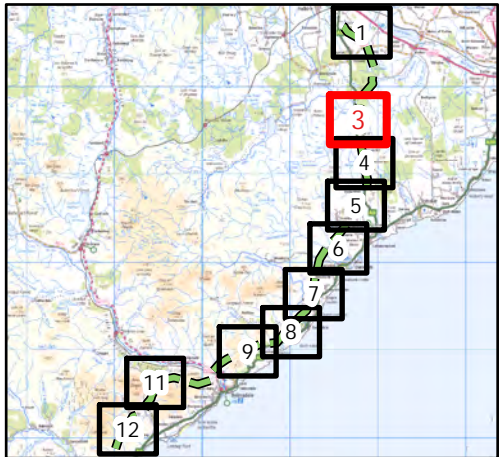


Beaulieu to Spittal



Figure 4a
Vantage Point Activity
Red kite - Map 3

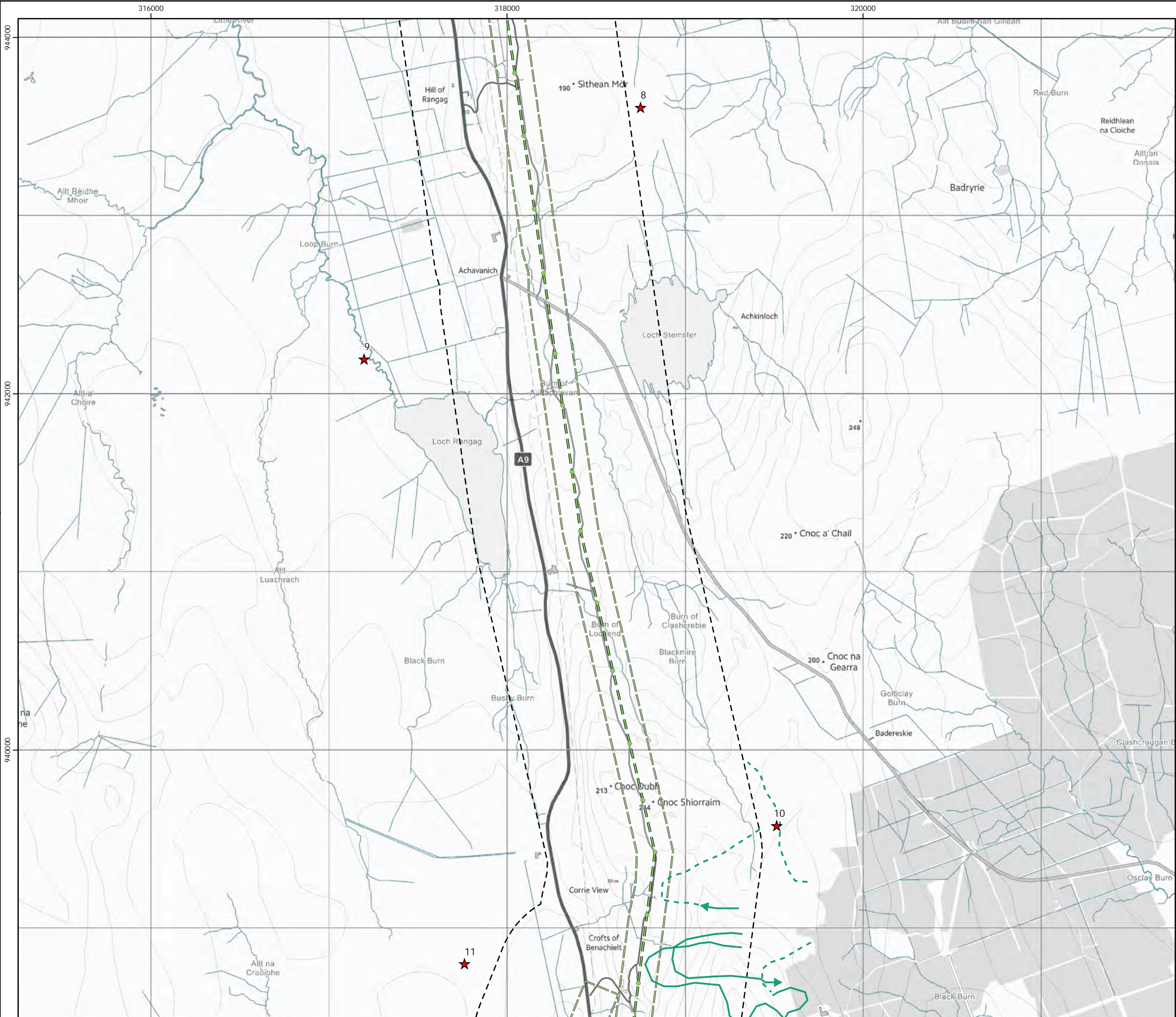
- Key**
- OHL Route Alignment and Tracks
 - OHL Alignment
 - Limit of Deviation for OHL (LoD)
 - 500m buffer from LoD
 - Tower
 - Permanent access track
 - Temporary access track
 - Vantage Point
- Target species registrations**
- Red kite
- Height Band**
- Below 5m height
 - 5 - 70m height
 - Above 70m height
 - On ground
 - Heard only



Scale @ A3:
1:20,000



© Crown copyright 2025. All rights reserved.
Ordnance survey licence number AC0000808122.



Beauly to Spittal



Figure 4a
Vantage Point Activity
Red kite - Map 4

Key

OHL Route Alignment and Tracks

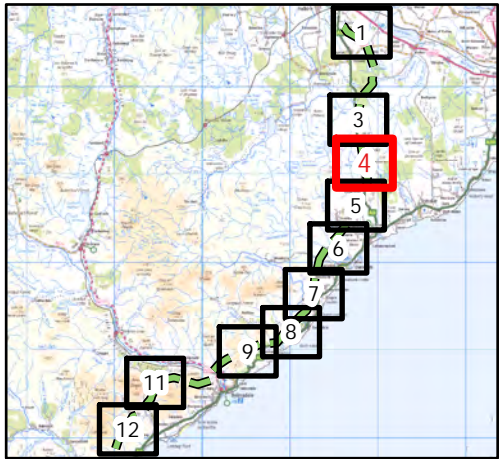
- OHL Alignment
- Limit of Deviation for OHL (LoD)
- 500m buffer from LoD
- Tower
- Permanent access track
- Temporary access track
- Vantage Point

Target species registrations

- Red kite

Height Band

- Below 5m height
- 5 - 70m height
- Above 70m height
- On ground
- Heard only



0 0.25 0.5 1
Kilometres

N

Scale @ A3:
1:20,000

UKAS
ISO 9001
UKAS
ISO 14001

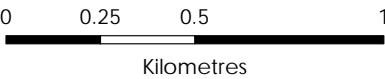
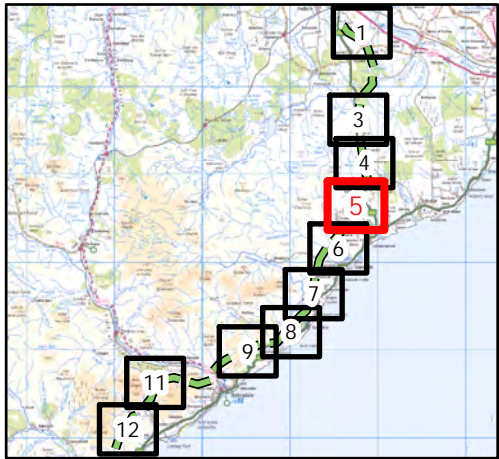
© Crown copyright 2025. All rights reserved.
Ordnance survey licence number AC0000808122.

Beauly to Spittal



Figure 4a
Vantage Point Activity
Red kite - Map 5

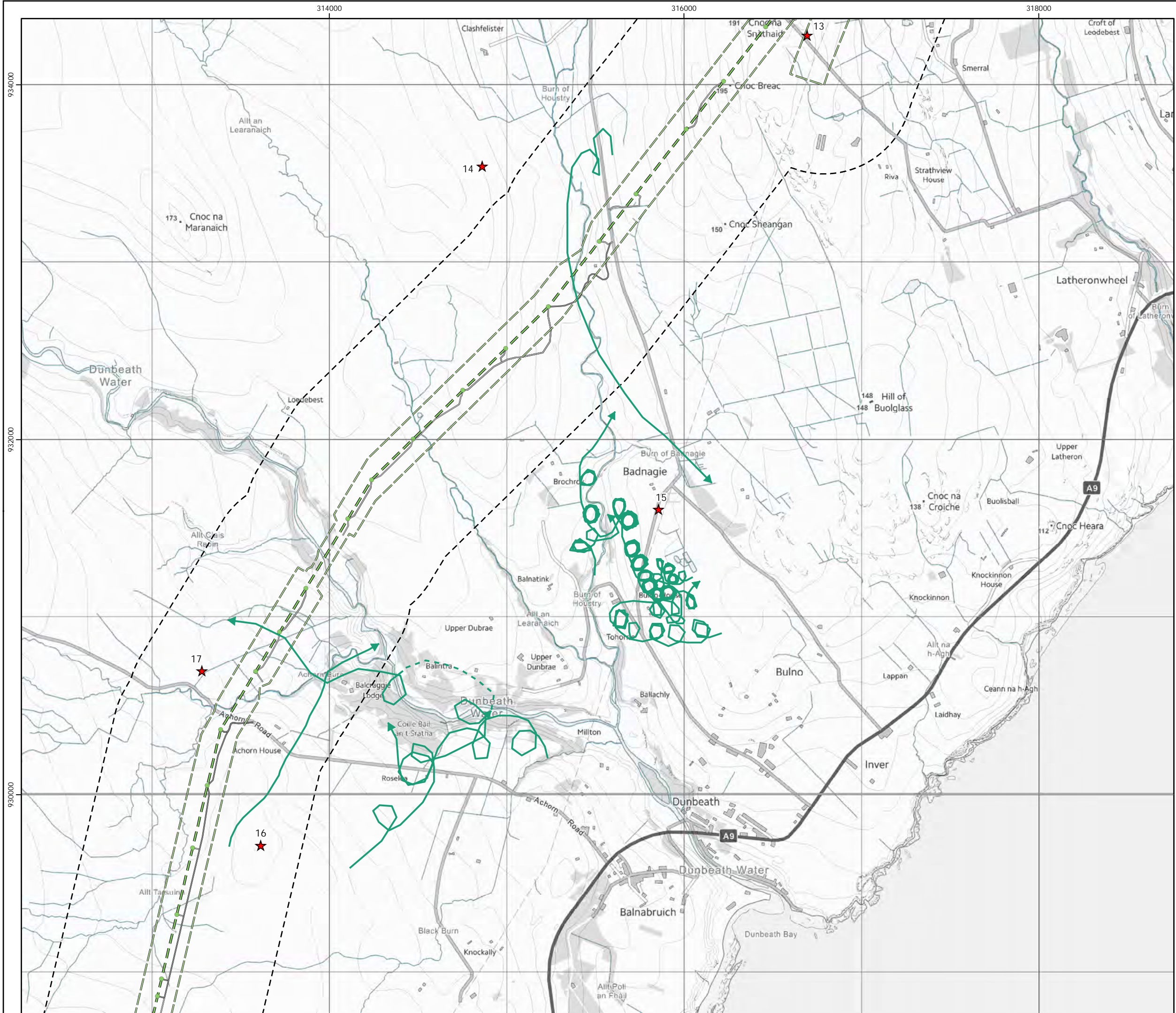
- Key**
- OHL Route Alignment and Tracks**
- OHL Alignment
 - Limit of Deviation for OHL (LoD)
 - 500m buffer from LoD
 - Tower
 - Permanent access track
 - Temporary access track
 - Vantage Point
- Target species registrations**
- Red kite
- Height Band**
- Below 5m height
 - 5 - 70m height
 - Above 70m height
 - On ground
 - Heard only



Scale @ A3:
1:20,000



© Crown copyright 2025. All rights reserved.
Ordnance survey licence number AC0000808122.

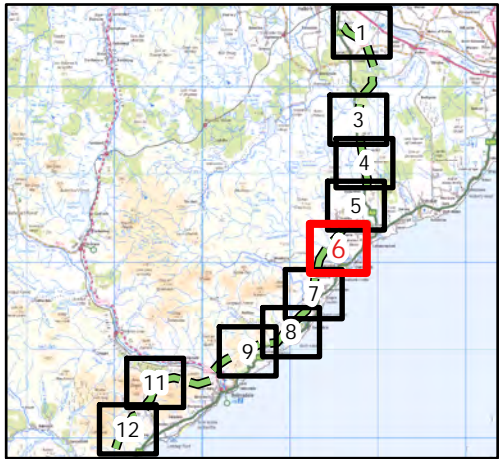


Beauly to Spittal

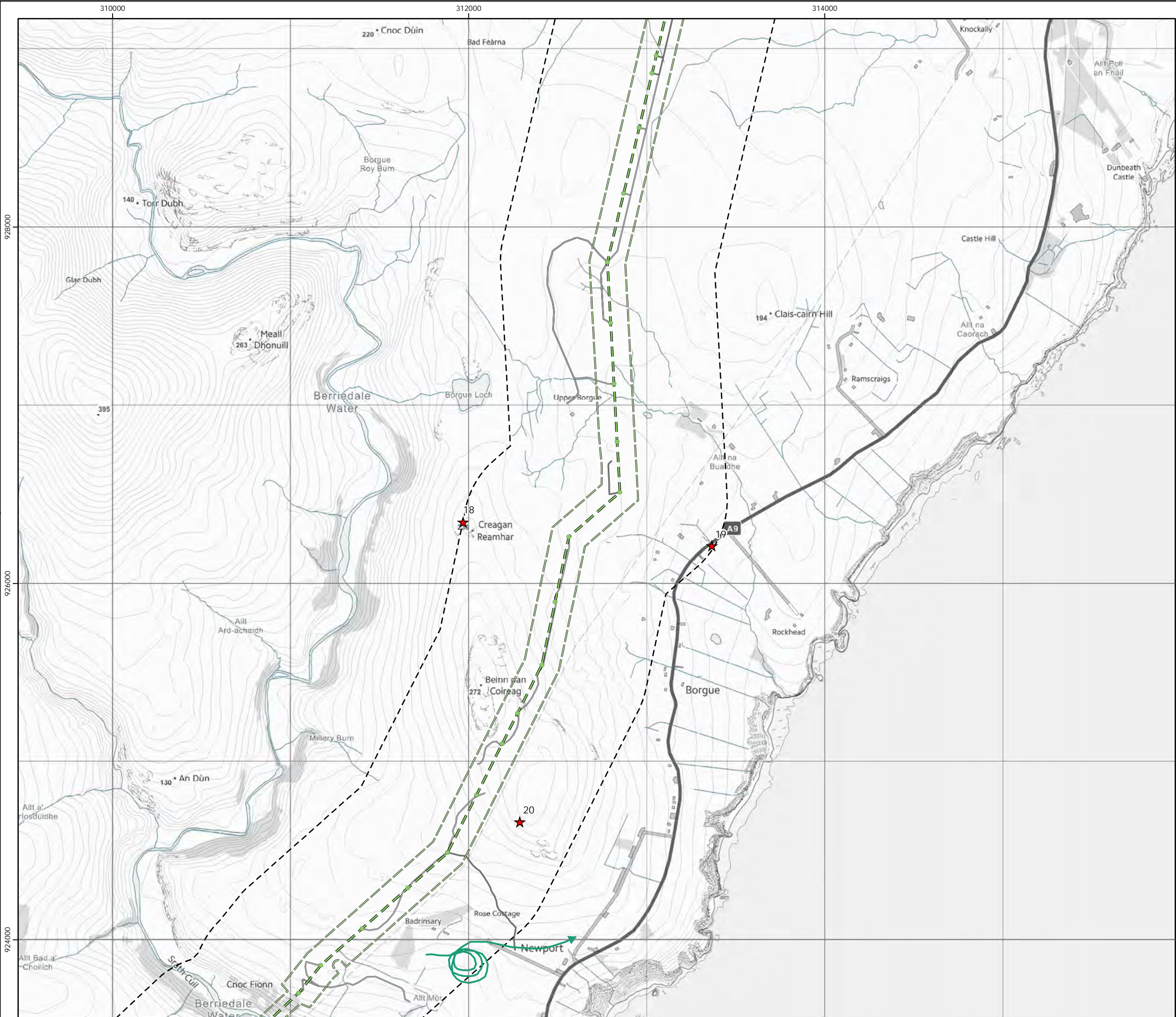


Figure 4a
Vantage Point Activity
Red kite - Map 6

- Key**
- OHL Route Alignment and Tracks**
- OHL Alignment
 - Limit of Deviation for OHL (LoD)
 - 500m buffer from LoD
 - Tower
 - Permanent access track
 - Temporary access track
 - Vantage Point
- Target species registrations**
- Red kite
- Height Band**
- Below 5m height
 - 5 - 70m height
 - Above 70m height
 - On ground
 - Heard only



© Crown copyright 2025. All rights reserved.
Ordnance survey licence number AC0000808122.

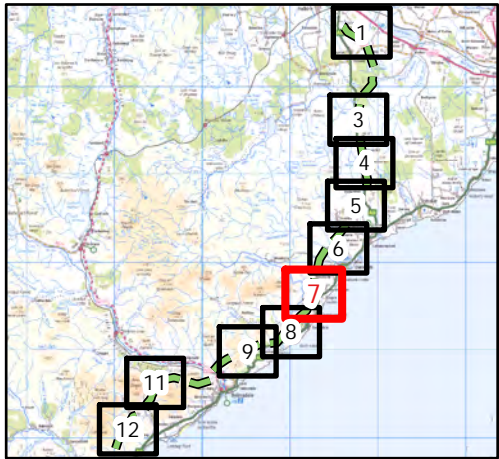


Beauly to Spittal

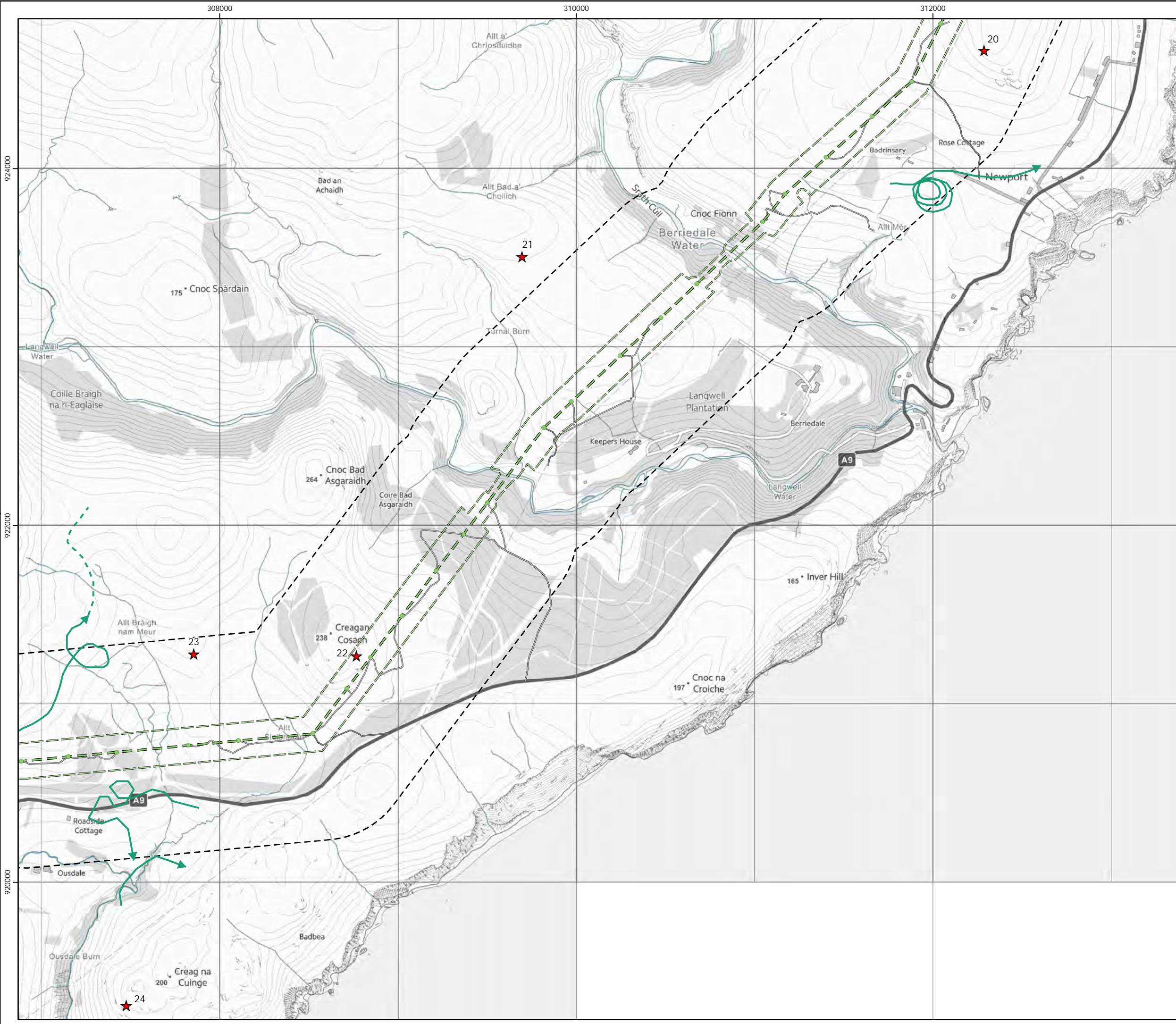


Figure 4a
Vantage Point Activity
Red kite - Map 7

- Key**
- OHL Route Alignment and Tracks**
- OHL Alignment
 - Limit of Deviation for OHL (LoD)
 - 500m buffer from LoD
 - Tower
 - Permanent access track
 - Temporary access track
 - Vantage Point
- Target species registrations**
- Red kite
- Height Band**
- Below 5m height
 - 5 - 70m height
 - Above 70m height
 - On ground
 - Heard only



© Crown copyright 2025. All rights reserved.
Ordnance survey licence number AC0000808122.

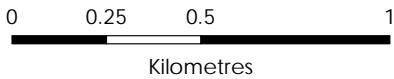
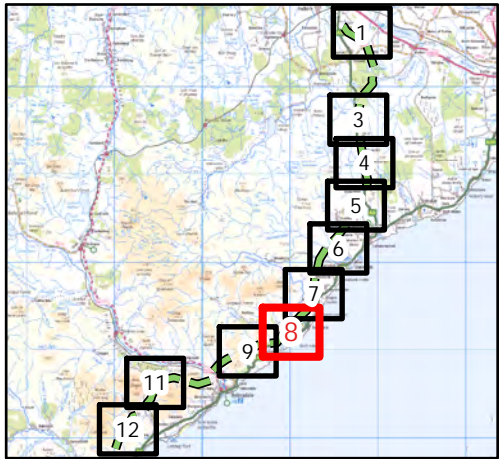


Beauly to Spittal



Figure 4a
Vantage Point Activity
Red kite - Map 8

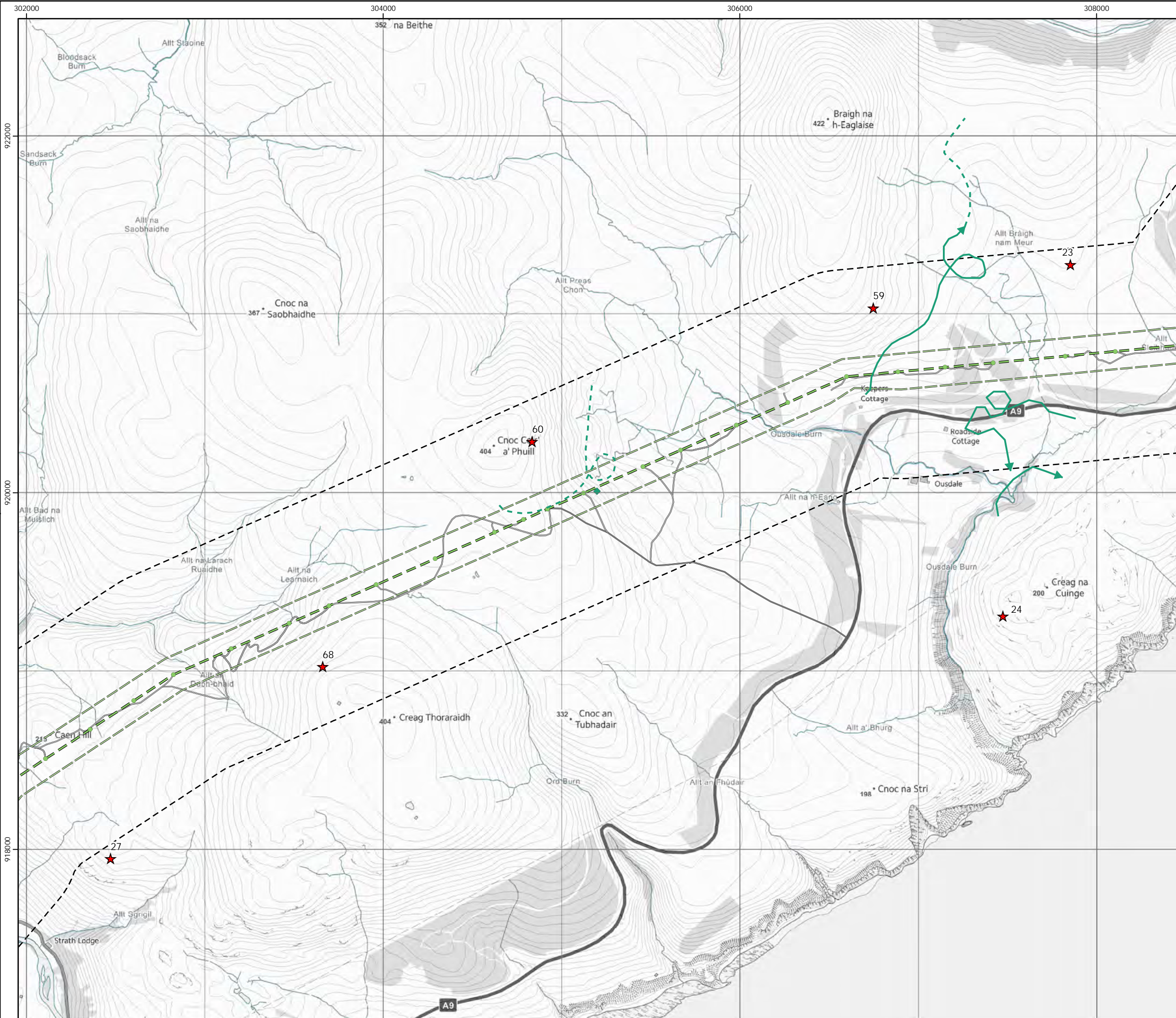
- Key**
- OHL Route Alignment and Tracks**
- OHL Alignment
 - Limit of Deviation for OHL (LoD)
 - 500m buffer from LoD
 - Tower
 - Permanent access track
 - Temporary access track
 - Vantage Point
- Target species registrations**
- Red kite
- Height Band**
- Below 5m height
 - 5 - 70m height
 - Above 70m height
 - On ground
 - Heard only



Scale @ A3:
1:20,000



© Crown copyright 2025. All rights reserved.
Ordnance survey licence number AC0000808122.

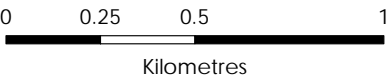
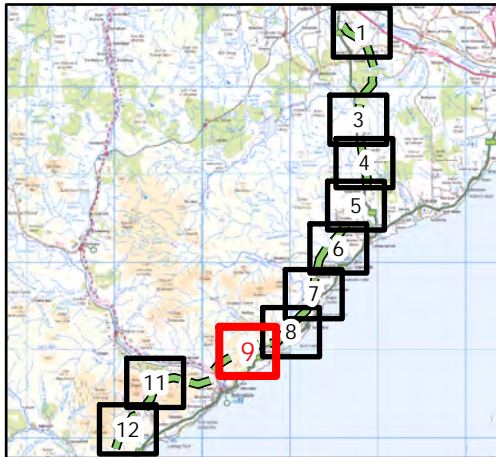


Beauly to Spittal



Figure 4a
Vantage Point Activity
Red kite - Map 9

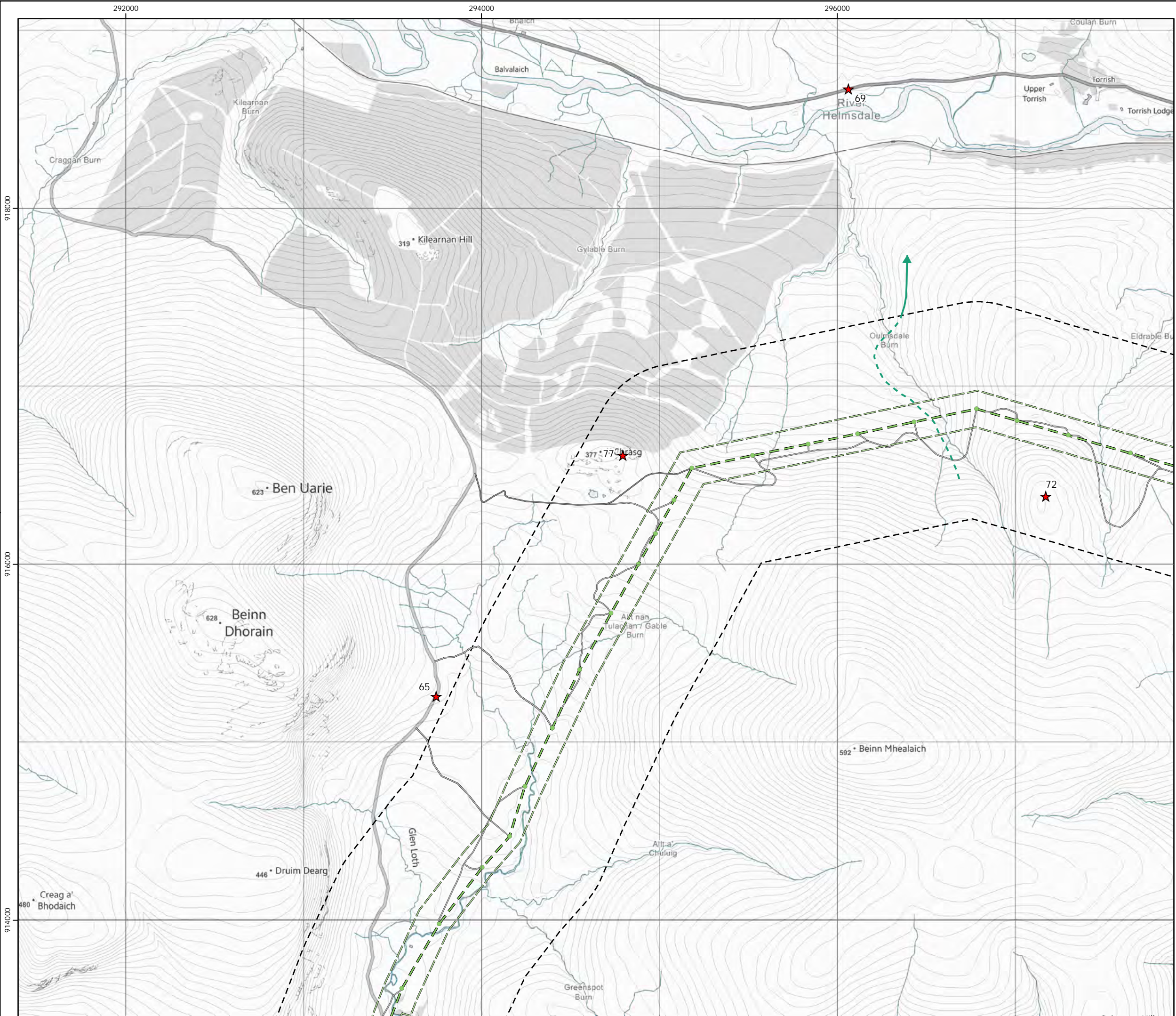
- Key**
- OHL Route Alignment and Tracks**
- OHL Alignment
 - Limit of Deviation for OHL (LoD)
 - 500m buffer from LoD
 - Tower
 - Permanent access track
 - Temporary access track
 - Vantage Point
- Target species registrations**
- Red kite
- Height Band**
- Below 5m height
 - 5 - 70m height
 - Above 70m height
 - On ground
 - Heard only



Scale @ A3:
1:20,000



© Crown copyright 2025. All rights reserved.
Ordnance survey licence number AC0000808122.

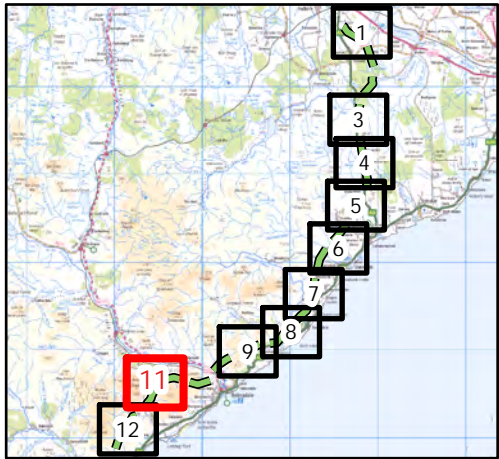


Beauly to Spittal

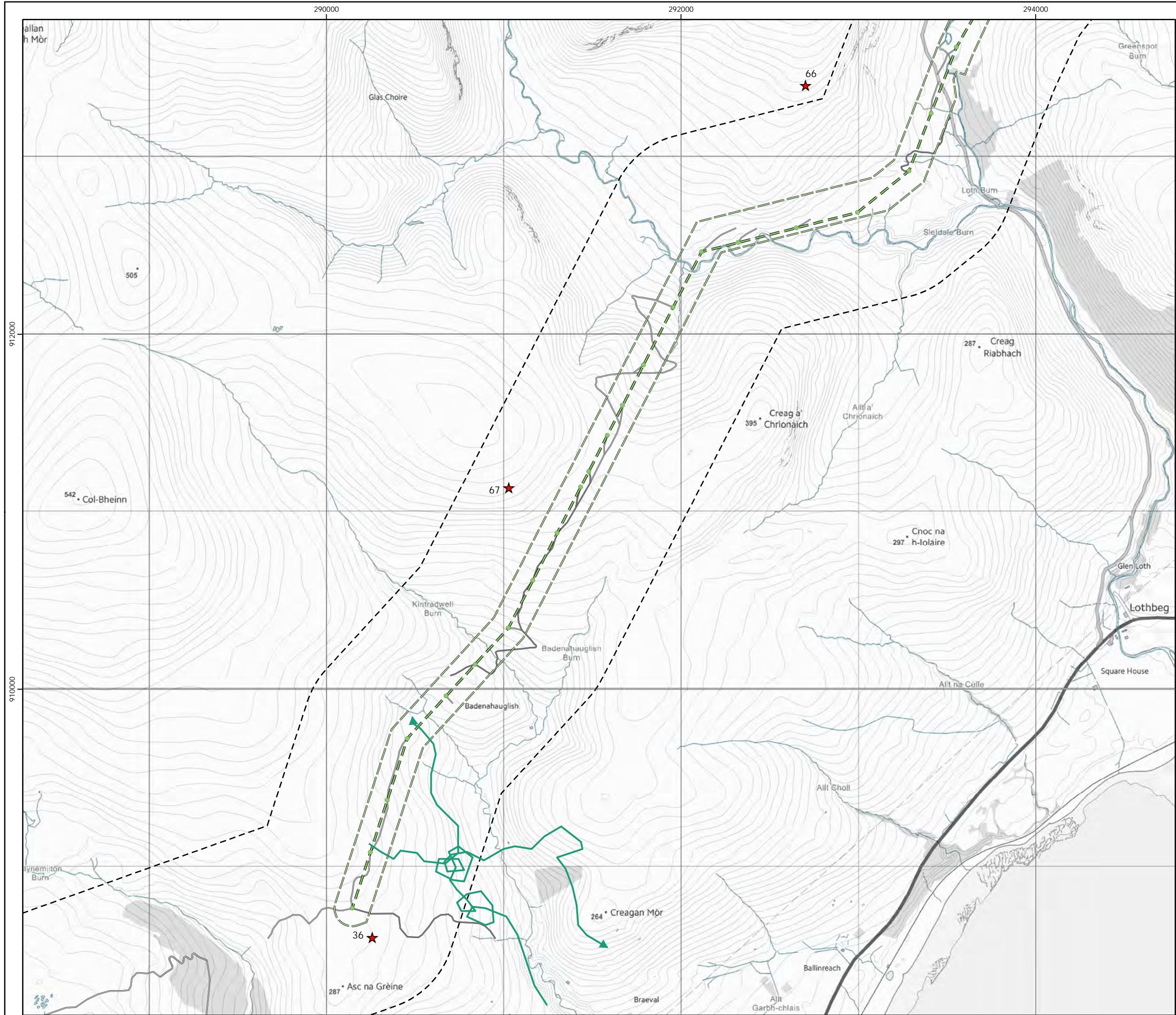


Figure 4a
Vantage Point Activity
Red kite - Map 11

- Key**
- OHL Route Alignment and Tracks**
- OHL Alignment
 - Limit of Deviation for OHL (LoD)
 - 500m buffer from LoD
 - Tower
 - Permanent access track
 - Temporary access track
 - Vantage Point
- Target species registrations**
- Red kite
- Height Band**
- Below 5m height
 - 5 - 70m height
 - Above 70m height
 - On ground
 - Heard only



© Crown copyright 2025. All rights reserved.
Ordnance survey licence number AC0000808122.

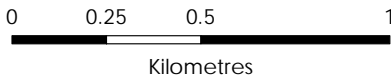
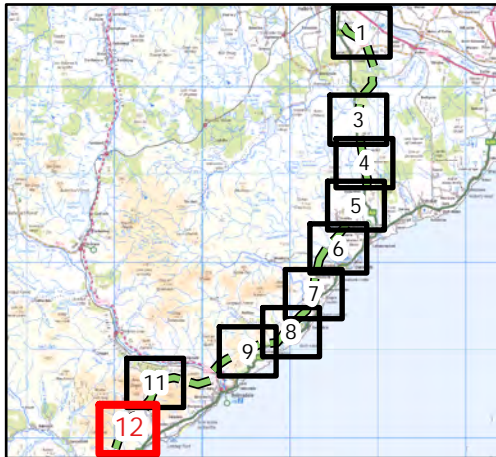


Beauly to Spittal



Figure 4a
Vantage Point Activity
Red kite - Map 12

- Key**
- OHL Route Alignment and Tracks**
- OHL Alignment
 - Limit of Deviation for OHL (LoD)
 - 500m buffer from LoD
 - Tower
 - Permanent access track
 - Temporary access track
 - Vantage Point
- Target species registrations**
- Red kite
- Height Band**
- Below 5m height
 - 5 - 70m height
 - Above 70m height
 - On ground
 - Heard only



Scale @ A3:
1:20,000



© Crown copyright 2025. All rights reserved.
Ordnance survey licence number AC0000808122.

Beauly to Spittal



Figure 4b
Vantage Point Activity
Eagles and Owls - Map 1

Key

OHL Route Alignment and Tracks

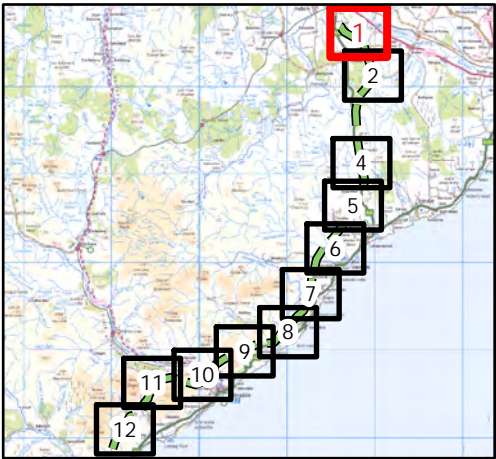
- OHL Alignment
- Limit of Deviation for OHL (LoD)
- 500m buffer from LoD
- Tower
- Permanent access track
- Temporary access track
- Vantage Point

Target species registrations

- Golden eagle
- White-tailed eagle
- Barn owl
- Short-eared owl
- Tawny owl

Height Band

- Below 5m height
- 5 - 70m height
- Above 70m height
- On ground
- Heard only



0 0.25 0.5 1
Kilometres

N

Scale @ A3:
1:20,000

UKAS

© Crown copyright 2025. All rights reserved.
Ordnance survey licence number AC0000808122.