

Beauly to Spittal



Figure 17a
Meadow Pipit Breeding
Territories 2023 - Map 10

Key

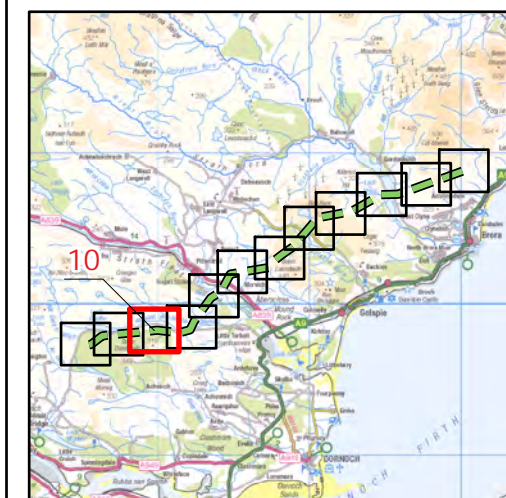
OHL Route Alignment and Tracks

- OHL Alignment
- Limit of Deviation for OHL (LoD)
- 500m buffer from LoD
- Tower
- Permanent access track
- Temporary access track

Meadow pipit

Breeding Status

- Confirmed
- Probable
- Possible
- Non-breeding



atmos
CONSULTING

0 500
Meters



Scale @ A3:
1:10,000



© Crown copyright 2025. All rights reserved.
Ordnance survey licence number AC0000808122.

11/10/2024 79300/OR/089a
Drawn by: AF Checked by: TH Approved by: JW

Beauly to Spittal



Figure 17a
Meadow Pipit Breeding
Territories 2023 - Map 11

Key

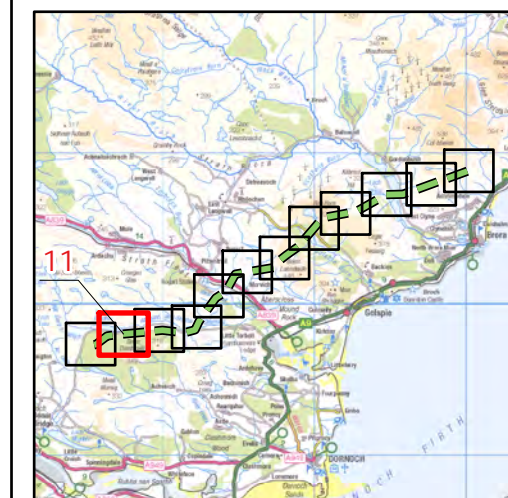
OHL Route Alignment and Tracks

- OHL Alignment
- Limit of Deviation for OHL (LoD)
- 500m buffer from LoD
- Tower
- Permanent access track
- Temporary access track
- No Access Areas - surveyed from public roads

Meadow pipit

Breeding Status

- Confirmed
- Probable
- Possible
- Non-breeding



atmos
CONSULTING

0 500
Meters

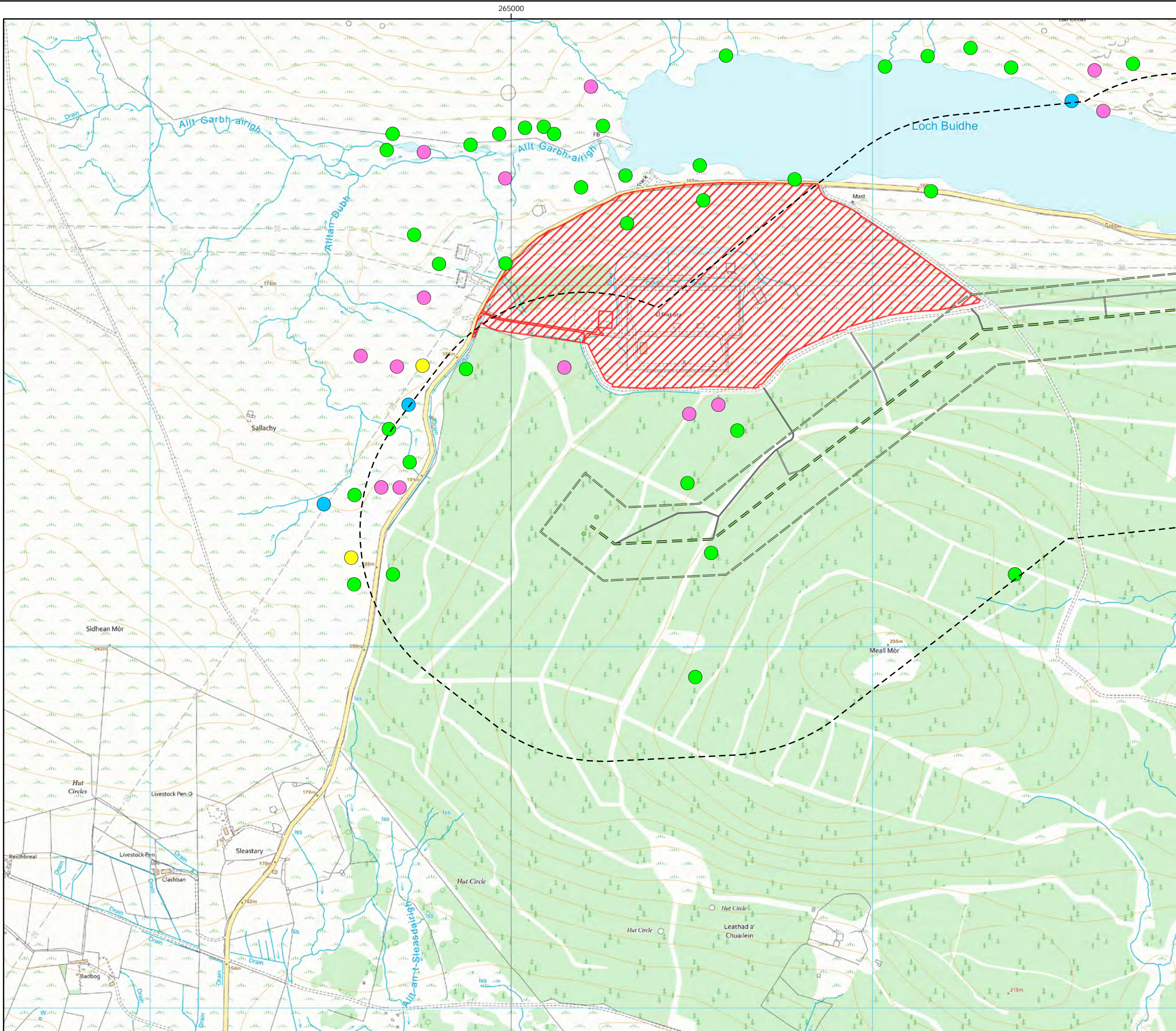


Scale @ A3:
1:10,000



© Crown copyright 2025. All rights reserved.
Ordnance survey licence number AC0000808122.

11/10/2024 79300/OR/089a
Drawn by: AF Checked by: TH Approved by: JW

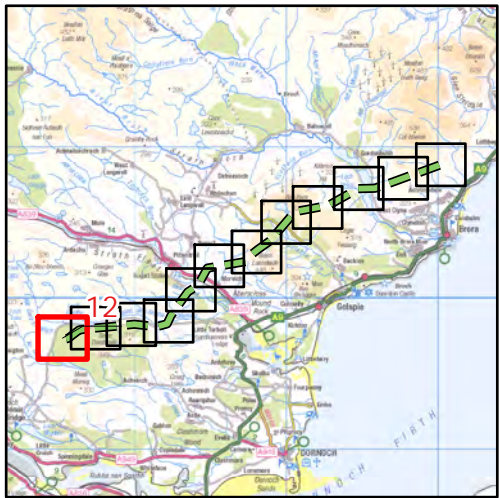


Beauly to Spittal



Figure 17a
Meadow Pipit Breeding
Territories 2023 - Map 12

- Key**
- OHL Route Alignment and Tracks**
- OHL Alignment
 - Limit of Deviation for OHL (LoD)
 - 500m buffer from LoD
 - Tower
 - Permanent access track
 - Temporary access track
 - No Access Areas - surveyed from public roads
- Meadow pipit
Breeding Status**
- Confirmed
 - Probable
 - Possible
 - Non-breeding



0 500
Meters

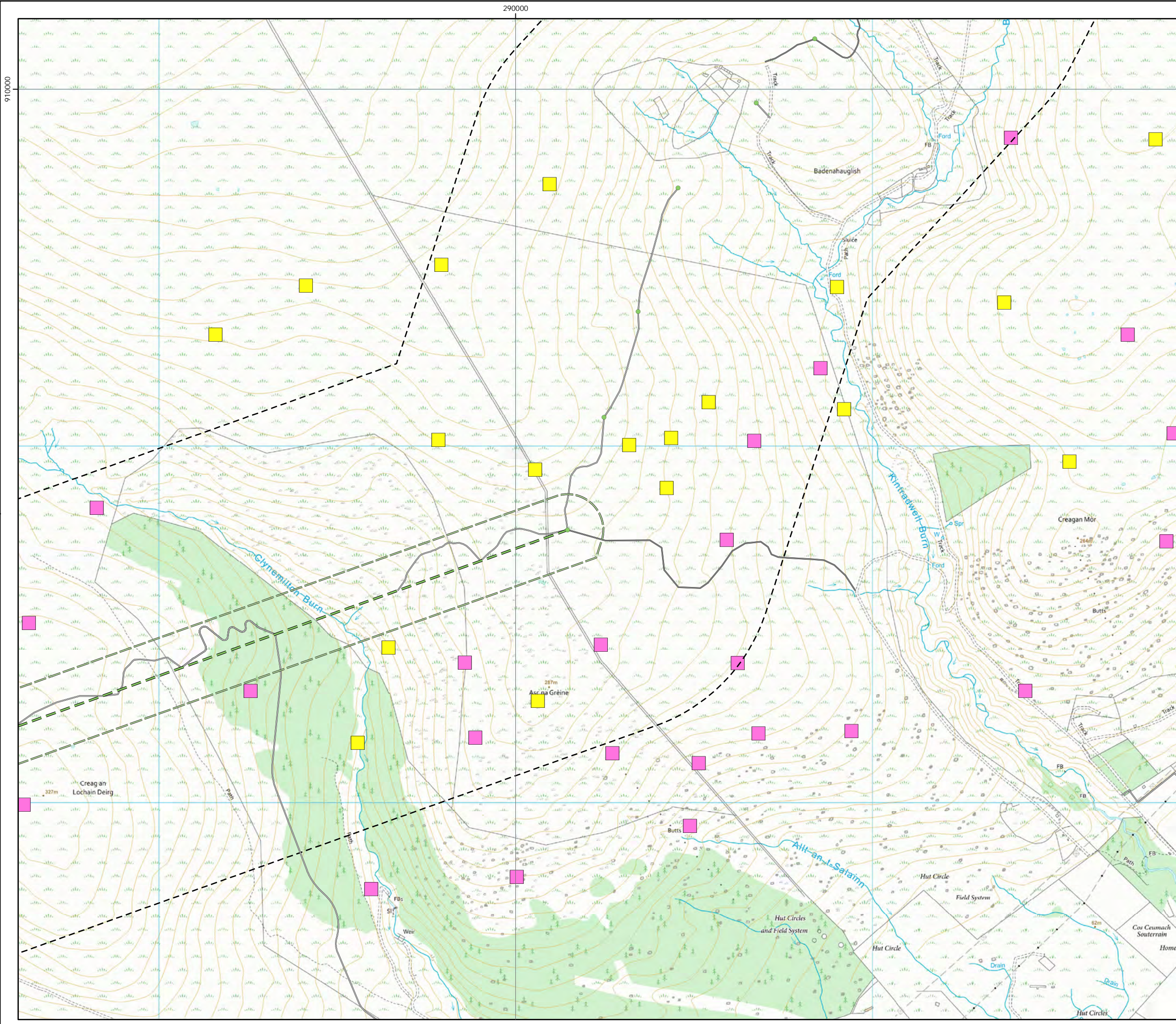


Scale @ A3:
1:10,000



© Crown copyright 2025. All rights reserved.
Ordnance survey licence number AC0000808122.

11/10/2024 79300/OR/089a
Drawn by: AF Checked by: TH Approved by: JW



Beaulieu to Spittal



Figure 17b
Skylark Breeding
Territories 2023 - Map 1

Key

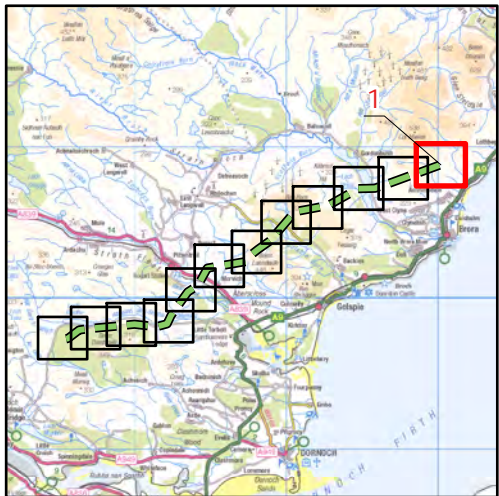
OHL Route Alignment and Tracks

- OHL Alignment
- Limit of Deviation for OHL (LoD)
- 500m buffer from LoD
- Tower
- Permanent access track
- Temporary access track

Skylark

Breeding Status

- Confirmed
- Probable
- Possible
- Non-breeding



0 500
Meters



Scale @ A3:
1:10,000



© Crown copyright 2025. All rights reserved.
Ordnance survey licence number AC0000808122.

Beauly to Spittal



Figure 17b
Skylark Breeding
Territories 2023 - Map 2

Key

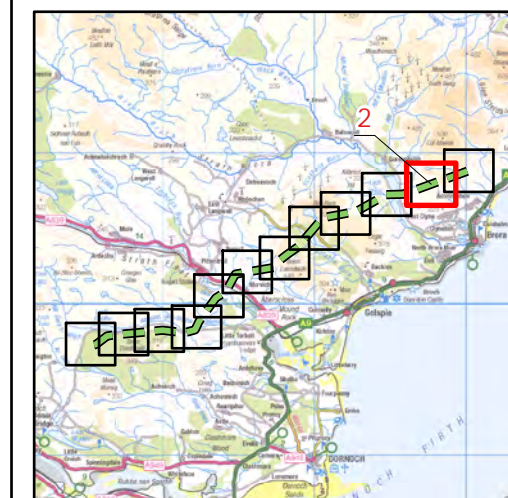
OHL Route Alignment and Tracks

- OHL Alignment
- Limit of Deviation for OHL (LoD)
- 500m buffer from LoD
- Tower
- Permanent access track
- Temporary access track

Skylark

Breeding Status

- Confirmed
- Probable
- Possible
- Non-breeding



atmos
CONSULTING

0 500
Meters

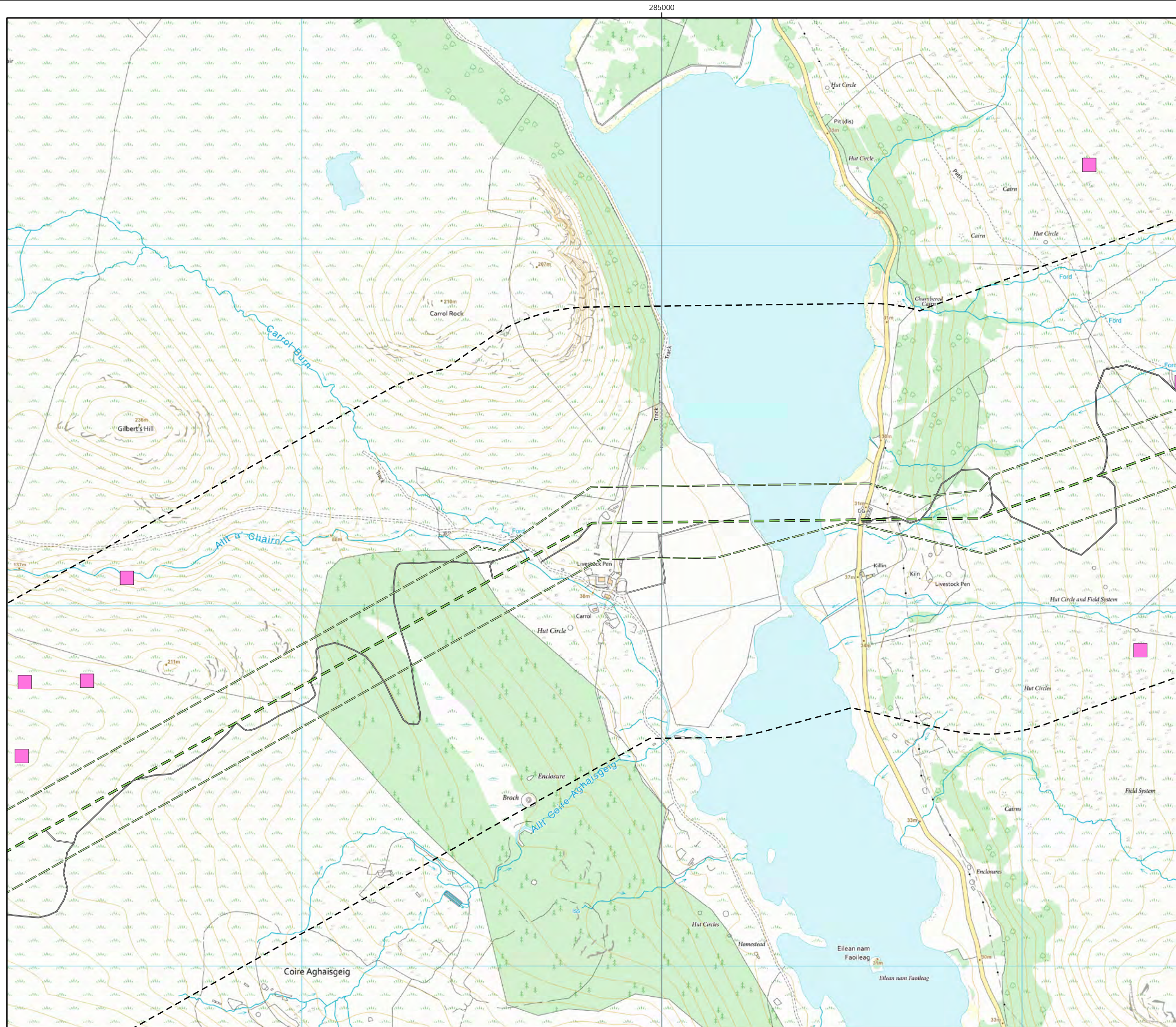


Scale @ A3:
1:10,000



© Crown copyright 2025. All rights reserved.
Ordnance survey licence number AC0000808122.

11/10/2024 79300/OR/089b
Drawn by: AF Checked by: TH Approved by: JW



Beaulieu to Spittal



Figure 17b
Skylark Breeding
Territories 2023 - Map 3

Key

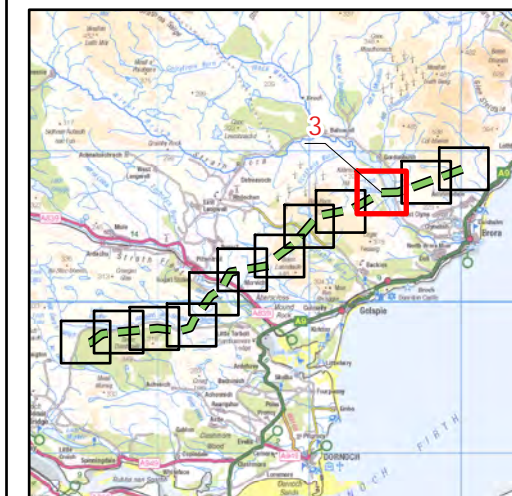
OHL Route Alignment and Tracks

- OHL Alignment
- Limit of Deviation for OHL (LoD)
- 500m buffer from LoD
- Tower
- Permanent access track
- Temporary access track

Skylark

Breeding Status

- Confirmed
- Probable
- Possible
- Non-breeding



atmos
CONSULTING

0 500
Meters



Scale @ A3:
1:10,000



© Crown copyright 2025. All rights reserved.
Ordnance survey licence number AC0000808122.

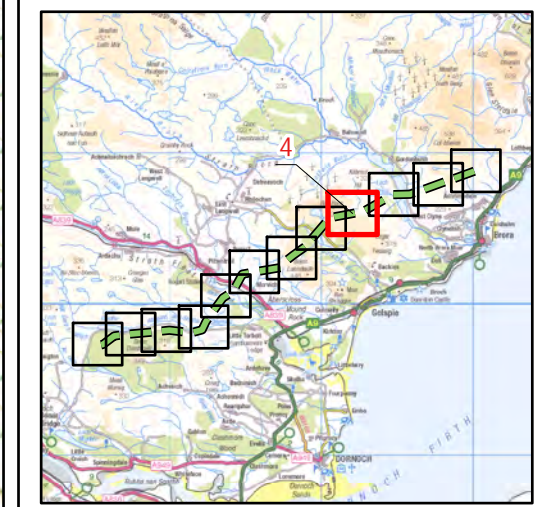
11/10/2024 79300/OR/089b
Drawn by: AF Checked by: TH Approved by: JW

Beauly to Spittal



Figure 17b
Skylark Breeding
Territories 2023 - Map 4

- Key**
- OHL Route Alignment and Tracks**
- OHL Alignment
 - Limit of Deviation for OHL (LoD)
 - 500m buffer from LoD
 - Tower
 - Permanent access track
 - Temporary access track
- Skylark**
- Breeding Status**
- Confirmed
 - Probable
 - Possible
 - Non-breeding

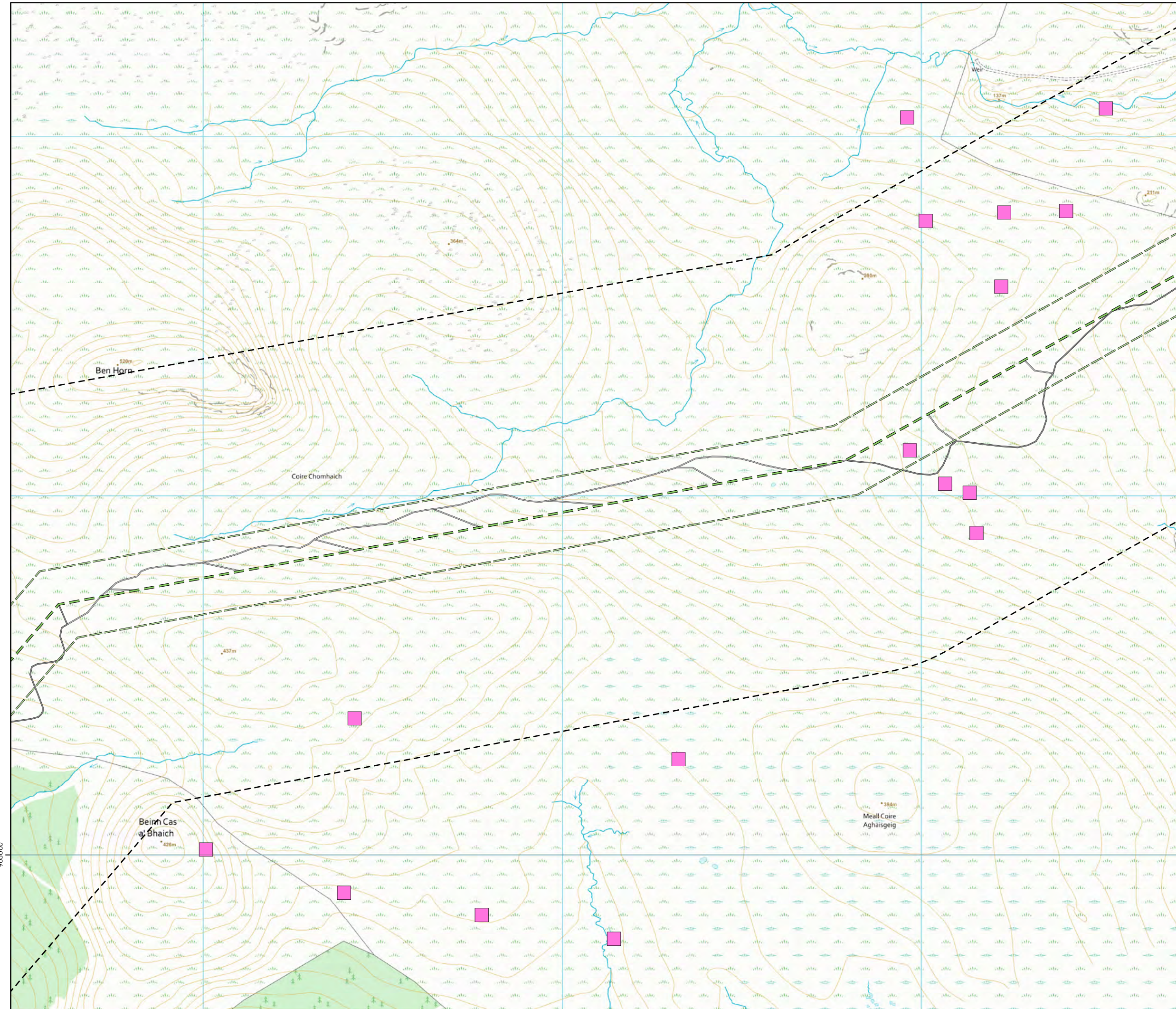


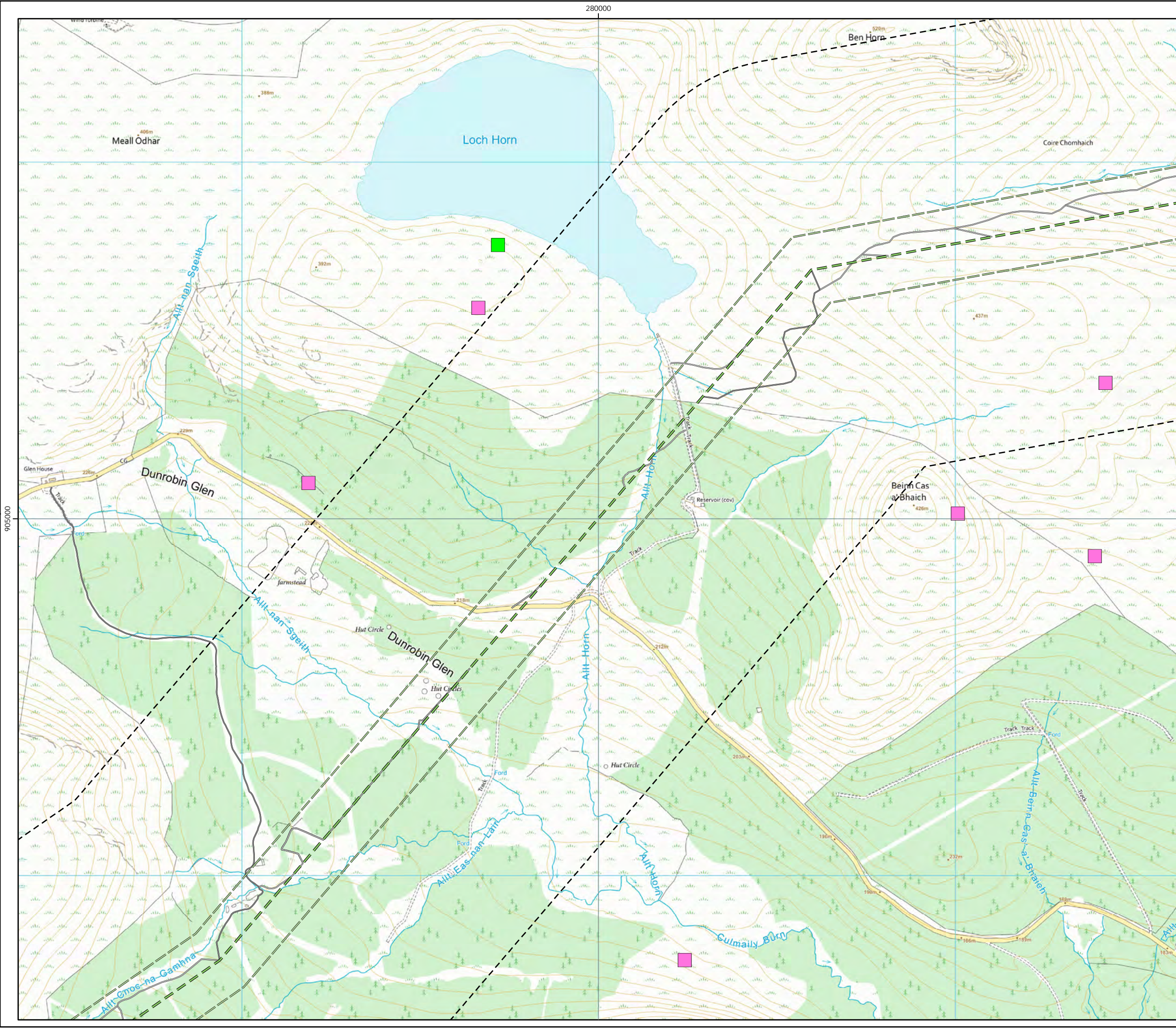
0 500
Meters

N

Scale @ A3:
1:10,000

© Crown copyright 2025. All rights reserved.
Ordnance survey licence number AC0000808122.





Beaulieu to Spittal



Figure 17b
Skylark Breeding
Territories 2023 - Map 5

Key

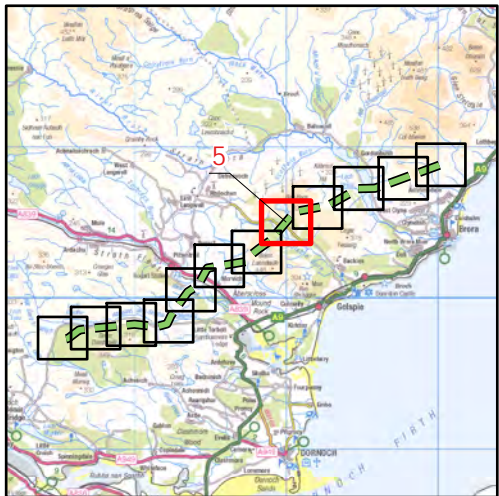
OHL Route Alignment and Tracks

- OHL Alignment
- Limit of Deviation for OHL (LoD)
- 500m buffer from LoD
- Tower
- Permanent access track
- Temporary access track

Skylark

Breeding Status

- Confirmed
- Probable
- Possible
- Non-breeding



0 500
Meters



Scale @ A3:
1:10,000



© Crown copyright 2025. All rights reserved.
Ordnance survey licence number AC0000808122.

Beauly to Spittal



Figure 17b
Skylark Breeding
Territories 2023 - Map 6

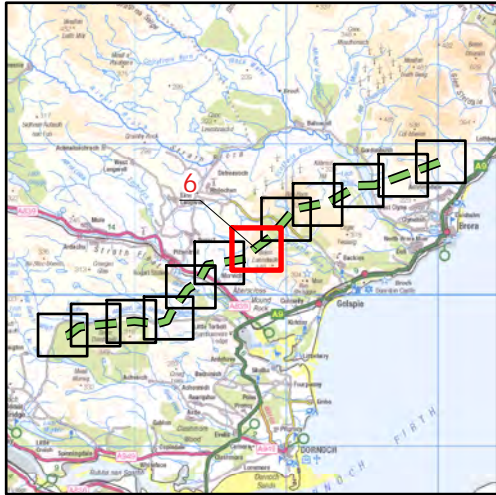
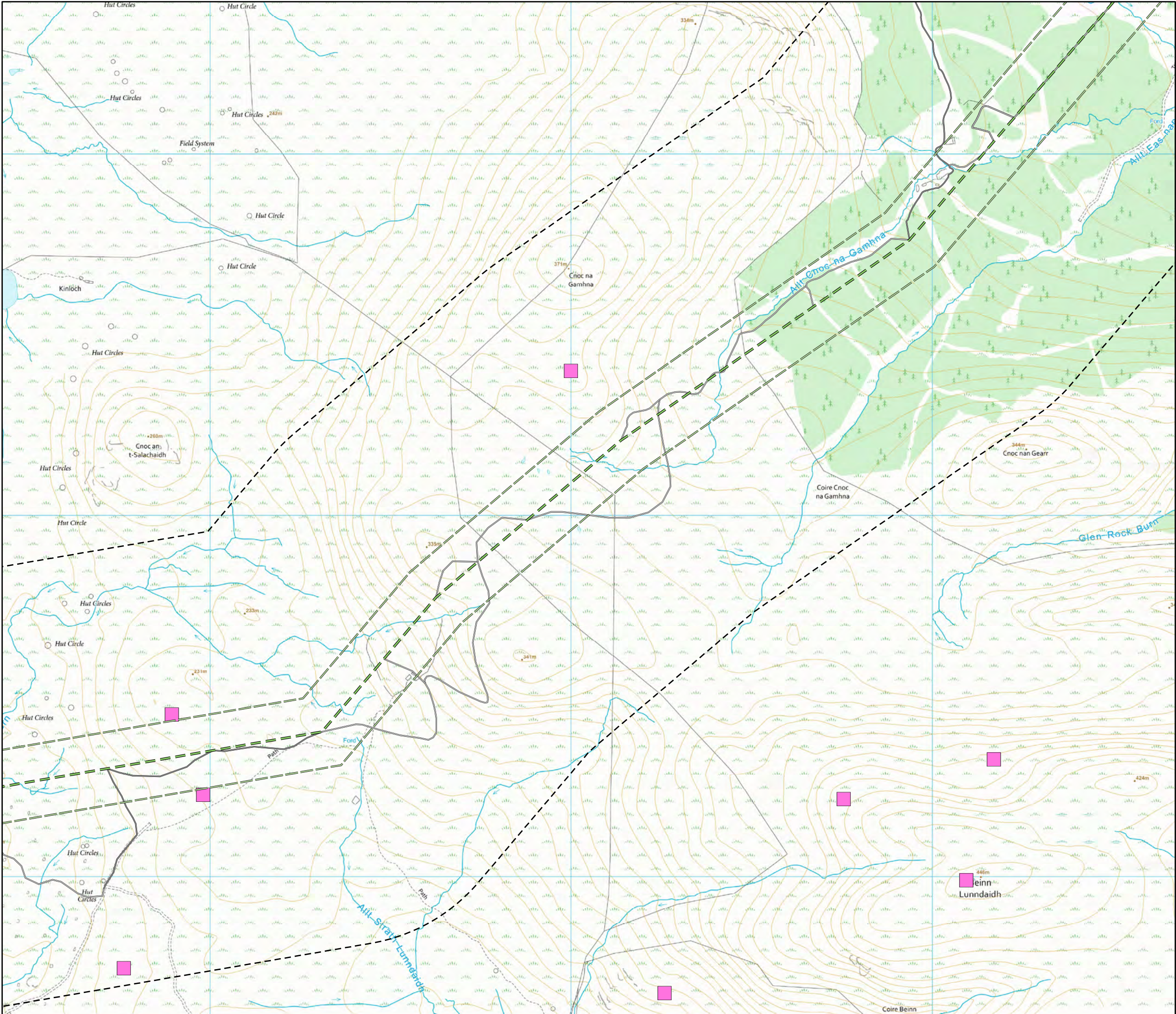
Key

OHL Route Alignment and Tracks

- OHL Alignment
- Limit of Deviation for OHL (LoD)
- 500m buffer from LoD
- Tower
- Permanent access track
- Temporary access track

Skylark Breeding Status

- Confirmed
- Probable
- Possible
- Non-breeding



0 500
Meters

Scale @ A3:
1:10,000

UKAS
ISO 9001

© Crown copyright 2025. All rights reserved.
Ordnance survey licence number AC0000808122.

Beauly to Spittal



Figure 17b
Skylark Breeding
Territories 2023 - Map 7

Key

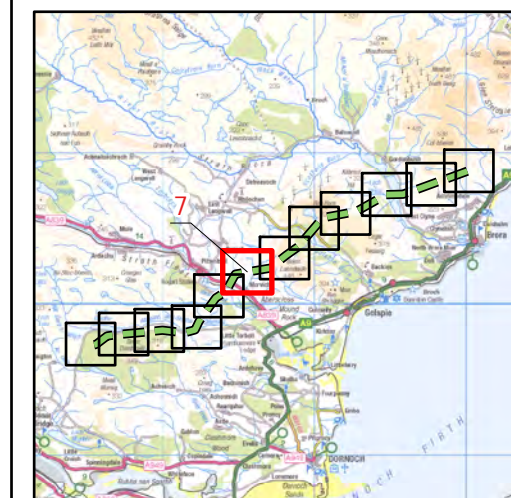
OHL Route Alignment and Tracks

- OHL Alignment
- Limit of Deviation for OHL (LoD)
- 500m buffer from LoD
- Tower
- Permanent access track
- Temporary access track

Skylark

Breeding Status

- Confirmed
- Probable
- Possible
- Non-breeding



atmos
CONSULTING

0 500
Meters



Scale @ A3:
1:10,000

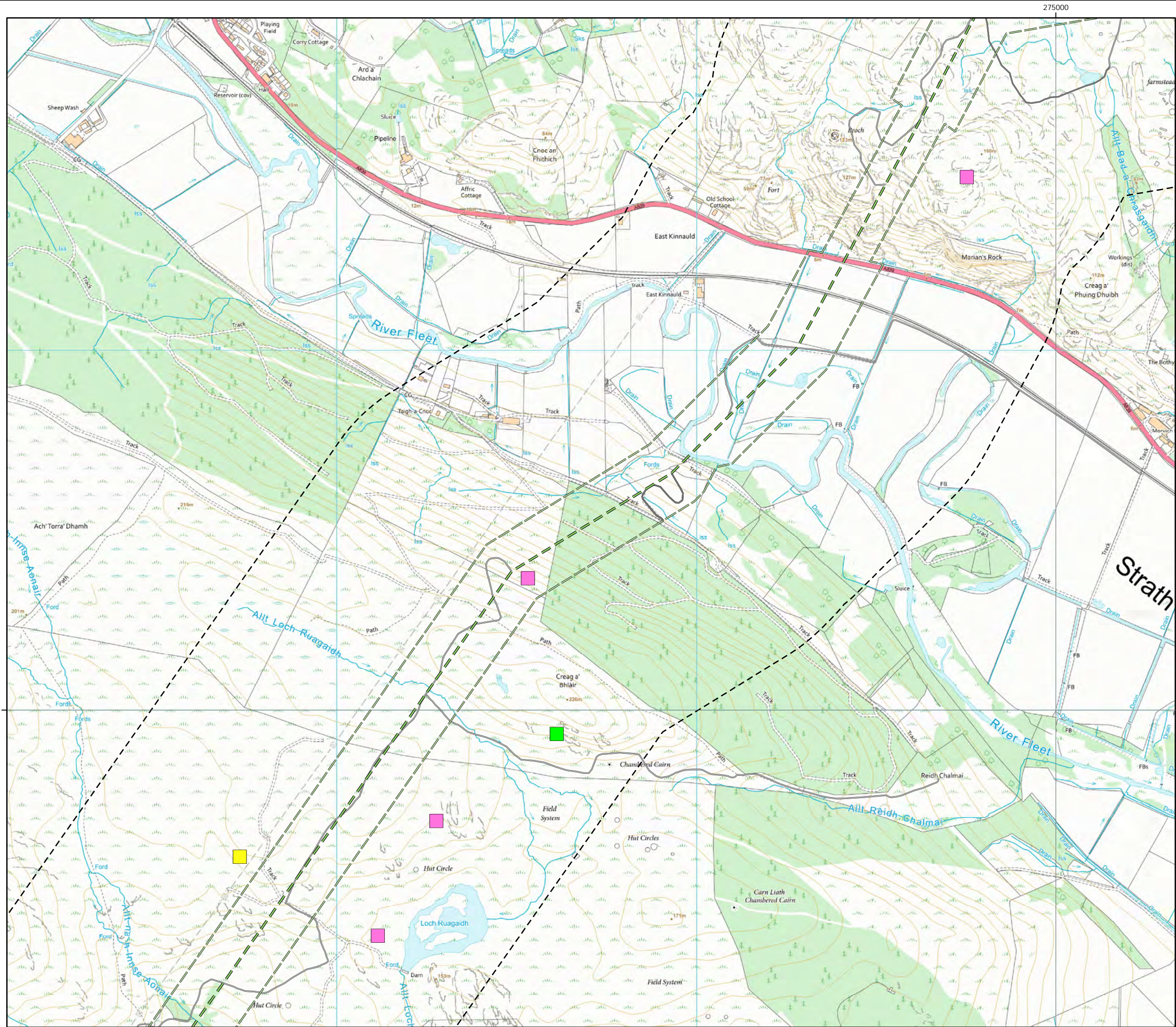


© Crown copyright 2025. All rights reserved.
Ordnance survey licence number AC0000808122.

11/10/2024

79300/OR/089b

Drawn by: AF Checked by: TH Approved by: JW



Beauly to Spittal



Figure 17b
Skylark Breeding
Territories 2023 - Map 8

Key

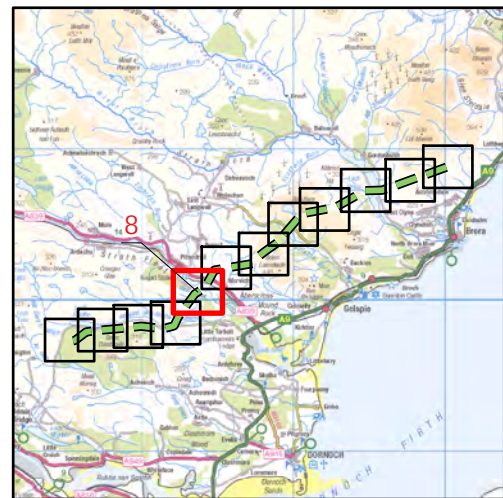
OHL Route Alignment and Tracks

- OHL Alignment
- Limit of Deviation for OHL (LoD)
- 500m buffer from LoD
- Tower
- Permanent access track
- Temporary access track

Skylark

Breeding Status

- Confirmed
- Probable
- Possible
- Non-breeding



atmos
CONSULTING

0 500
Meters



Scale @ A3:
1:10,000



© Crown copyright 2025. All rights reserved.
Ordnance survey licence number AC0000808122.

11/10/2024 79300/OR/089b
Drawn by: AF Checked by: TH Approved by: JW

Beauly to Spittal



Figure 17b
Skylark Breeding
Territories 2023 - Map 9

Key

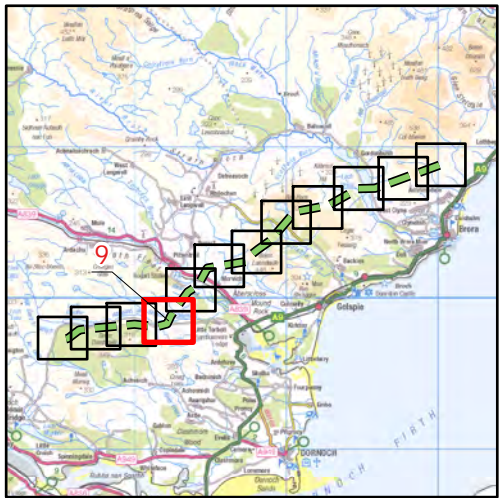
OHL Route Alignment and Tracks

- OHL Alignment
- Limit of Deviation for OHL (LoD)
- 500m buffer from LoD
- Tower
- Permanent access track
- Temporary access track

Skylark

Breeding Status

- Confirmed
- Probable
- Possible
- Non-breeding



0 500
Meters

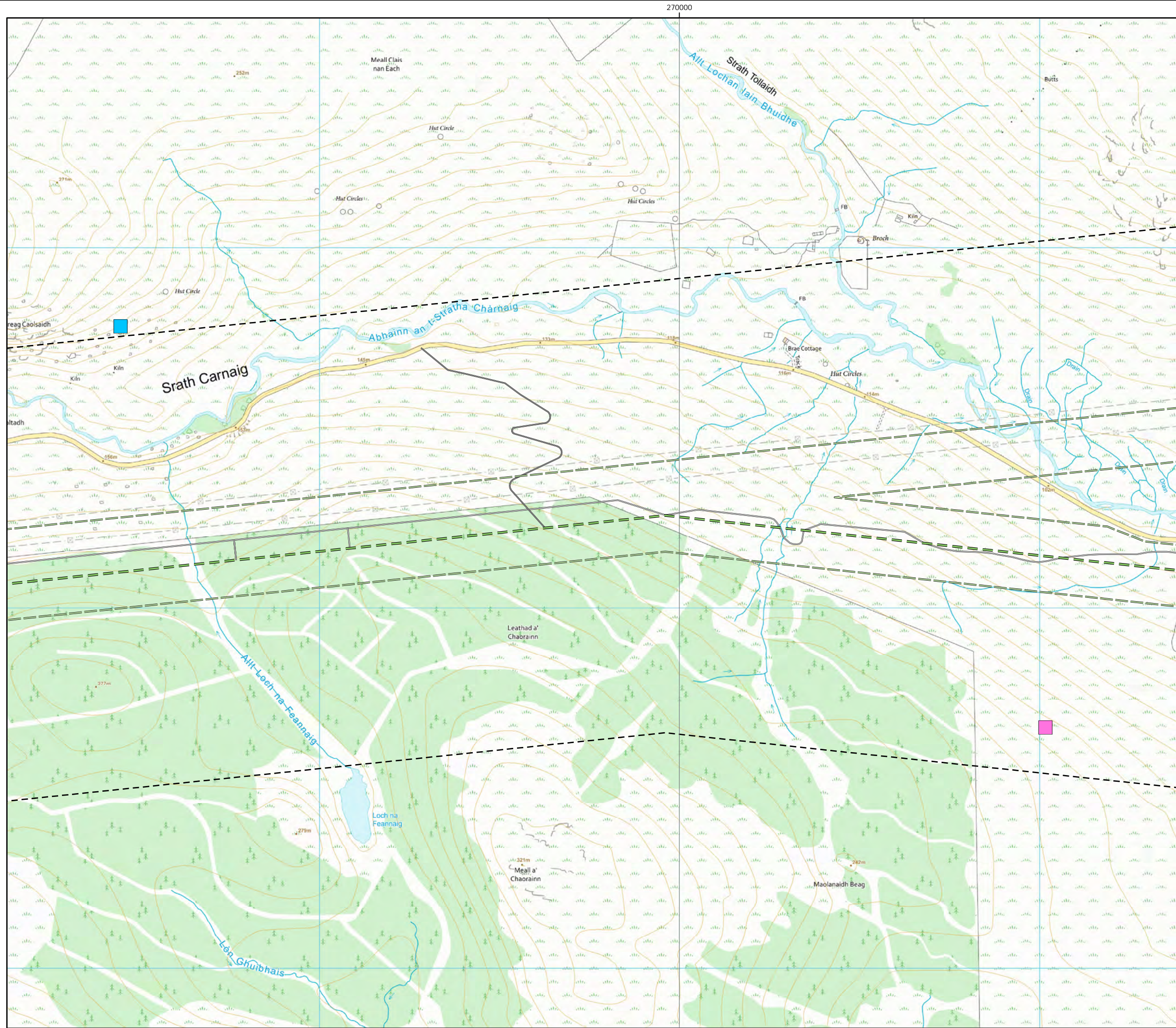


Scale @ A3:
1:10,000



© Crown copyright 2025. All rights reserved.
Ordnance survey licence number AC0000808122.

11/10/2024 79300/OR/089b
Drawn by: AF Checked by: TH Approved by: JW



Beaulieu to Spittal



Figure 17b
Skylark Breeding
Territories 2023 - Map 10

Key

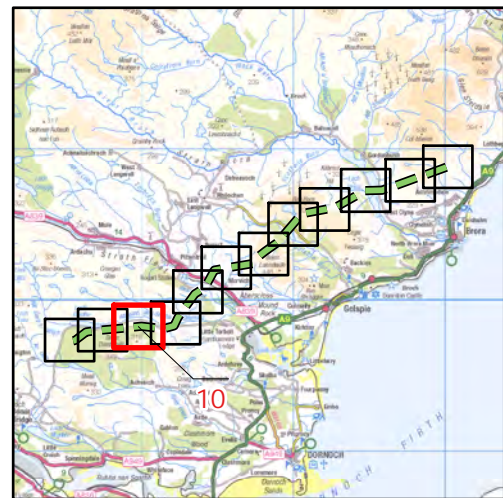
OHL Route Alignment and Tracks

- OHL Alignment
- Limit of Deviation for OHL (LoD)
- 500m buffer from LoD
- Tower
- Permanent access track
- Temporary access track

Skylark

Breeding Status

- Confirmed
- Probable
- Possible
- Non-breeding



atmos
CONSULTING

0 500
Meters



Scale @ A3:
1:10,000



© Crown copyright 2025. All rights reserved.
Ordnance survey licence number AC0000808122.

11/10/2024 79300/OR/089b
Drawn by: AF Checked by: TH Approved by: JW

Beauly to Spittal



Figure 17b
Skylark Breeding
Territories 2023 - Map 11

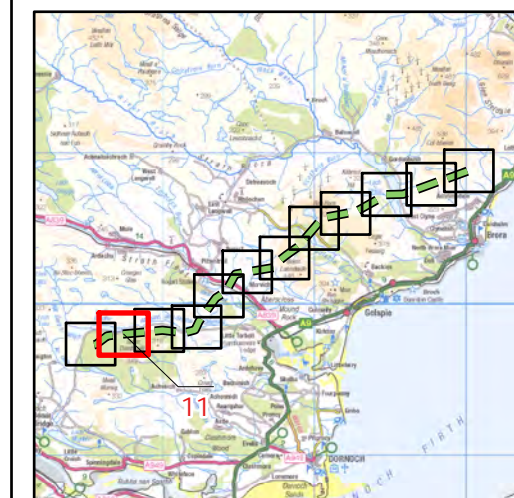
Key

- OHL Route Alignment and Tracks**
- OHL Alignment
 - Limit of Deviation for OHL (LoD)
 - 500m buffer from LoD
 - Tower
 - Permanent access track
 - Temporary access track
 - No Access Areas - surveyed from public roads

Skylark

Breeding Status

- Confirmed
- Probable
- Possible
- Non-breeding



atmos
CONSULTING

0 500
Meters

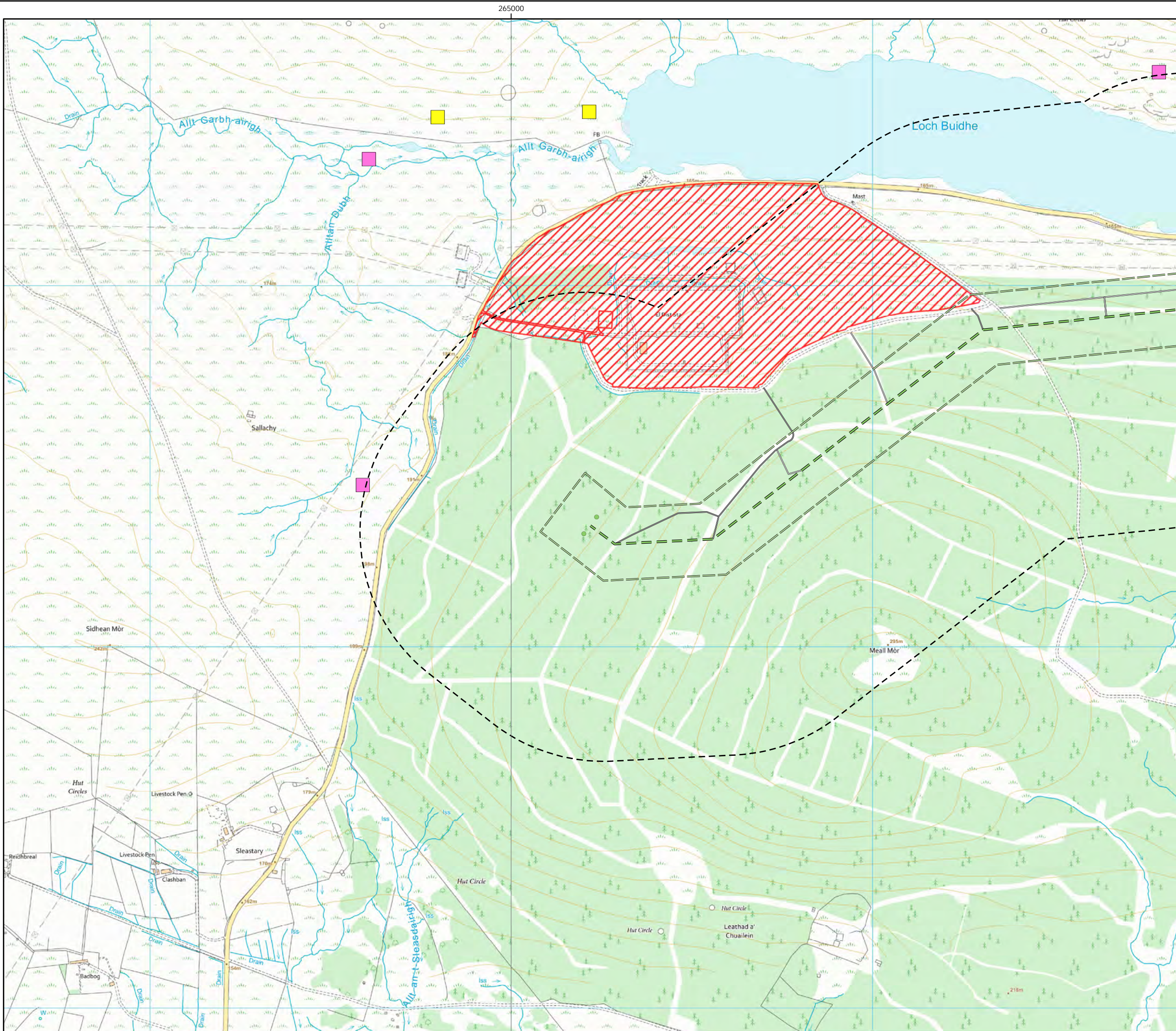


Scale @ A3:
1:10,000



© Crown copyright 2025. All rights reserved.
Ordnance survey licence number AC0000808122.

11/10/2024 79300/OR/089b
Drawn by: AF Checked by: TH Approved by: JW

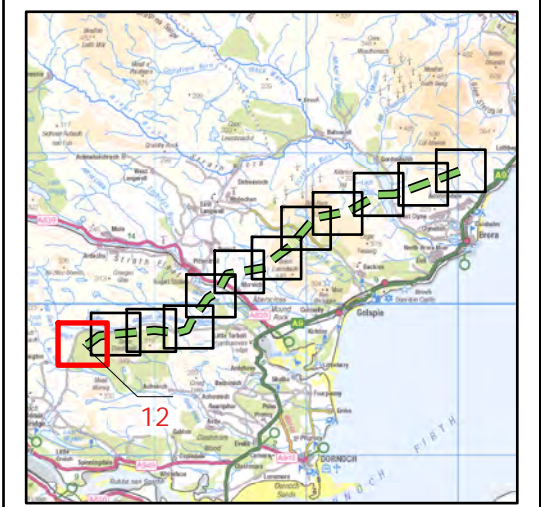


Beauly to Spittal



Figure 17b
Skylark Breeding
Territories 2023 - Map 12

- Key**
- OHL Route Alignment and Tracks**
- OHL Alignment
 - Limit of Deviation for OHL (LoD)
 - 500m buffer from LoD
 - Tower
 - Permanent access track
 - Temporary access track
 - No Access Areas - surveyed from public roads
- Skylark**
- Breeding Status**
- Confirmed
 - Probable
 - Possible
 - Non-breeding



0 500
Meters

Scale @ A3:
1:10,000

© Crown copyright 2025. All rights reserved.
Ordnance survey licence number AC0000808122.

UKS URAS

Beauly to Spittal



Figure 17c
Breeding Bird Survey
Results 2023 - Map 1

Key

OHL Route Alignment and Tracks

- OHL Alignment
- Limit of Deviation for OHL (LoD)
- 500m buffer from LoD
- Tower
- Permanent access track
- Temporary access track
- No Access Areas - surveyed from public roads

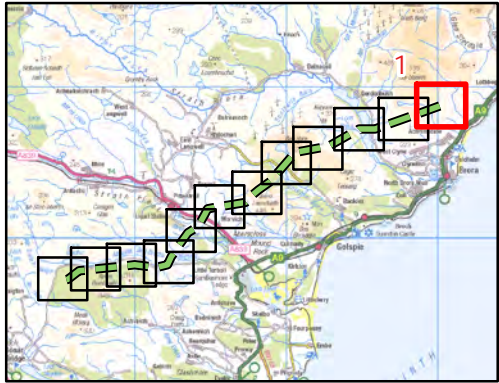
Category

- Schedule 1/Annex 1
- Scottish Priority Species
- Not designated

Breeding Status

- Confirmed
- Probable
- Possible
- Non-breeding

Red Listed species - BOCC
Amber Listed species - BOCC



0 500
Meters

N

Scale @ A3:
1:10,000

© Crown copyright 2025. All rights reserved.
Ordnance survey licence number AC0000808122.

Beauly to Spittal



Figure 17c
Breeding Bird Survey
Results 2023 - Map 2

Key

OHL Route Alignment and Tracks

- OHL Alignment
- Limit of Deviation for OHL (LoD)
- 500m buffer from LoD
- Permanent access track
- Temporary access track
- No Access Areas - surveyed from public roads

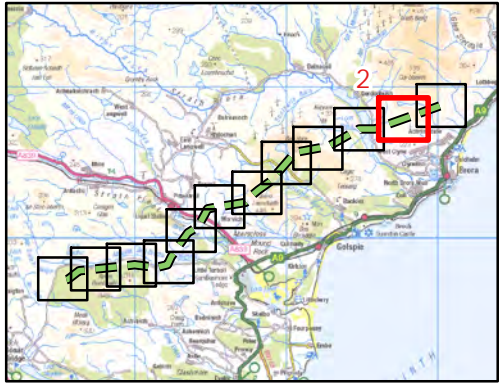
Category

- Schedule 1/Annex 1
- Scottish Priority Species
- Not designated

Breeding Status

- Confirmed
- Probable
- Possible
- Non-breeding

Red Listed species - BOCC
Amber Listed species - BOCC



0 500
Meters



Scale @ A3:
1:10,000



© Crown copyright 2025. All rights reserved.
Ordnance survey licence number AC0000808122.

11/10/2024 79300/OR/089c
Drawn by: AF Checked by: TH Approved by: JW