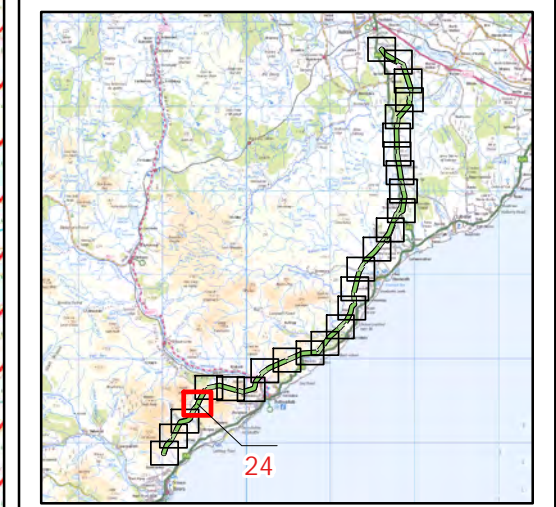


Beauly to Spittal



Figure 5a
Meadow Pipit Breeding
Territories 2023 - Map 24

- Key**
- OHL Route Alignment and Tracks**
- OHL Alignment
 - Limit of Deviation for OHL (LoD)
 - 500m buffer from LoD
 - Tower
 - Temporary access track
 - No Access Areas - surveyed from public roads
- Meadow pipit**
- Breeding Status**
- Confirmed
 - Probable
 - Possible
 - Non-breeding



0 500
Meters

Scale @ A3:
1:10,000

© Crown copyright 2025. All rights reserved.
Ordnance survey licence number AC0000808122.

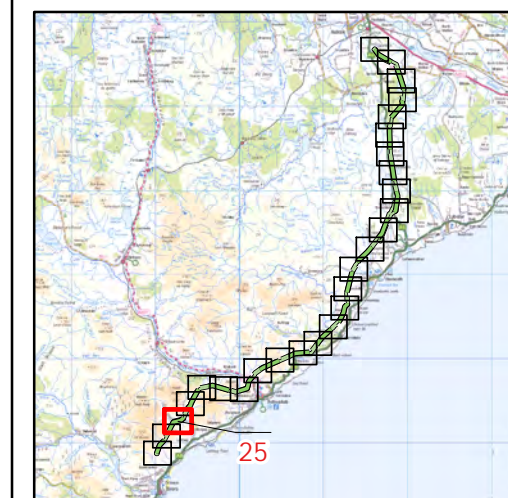
20/01/2025 79300/OR/088d
Drawn by: AF Checked by: TH Approved by: JW

Beauly to Spittal



Figure 5a
Meadow Pipit Breeding
Territories 2023 - Map 25

- Key**
- OHL Route Alignment and Tracks**
- OHL Alignment
 - Limit of Deviation for OHL (LoD)
 - 500m buffer from LoD
 - Tower
 - Permanent access track
 - Temporary access track
 - No Access Areas - surveyed from public roads
- Meadow pipit**
- Breeding Status**
- Confirmed
 - Probable
 - Possible
 - Non-breeding



0 500
Meters



Scale @ A3:
1:10,000

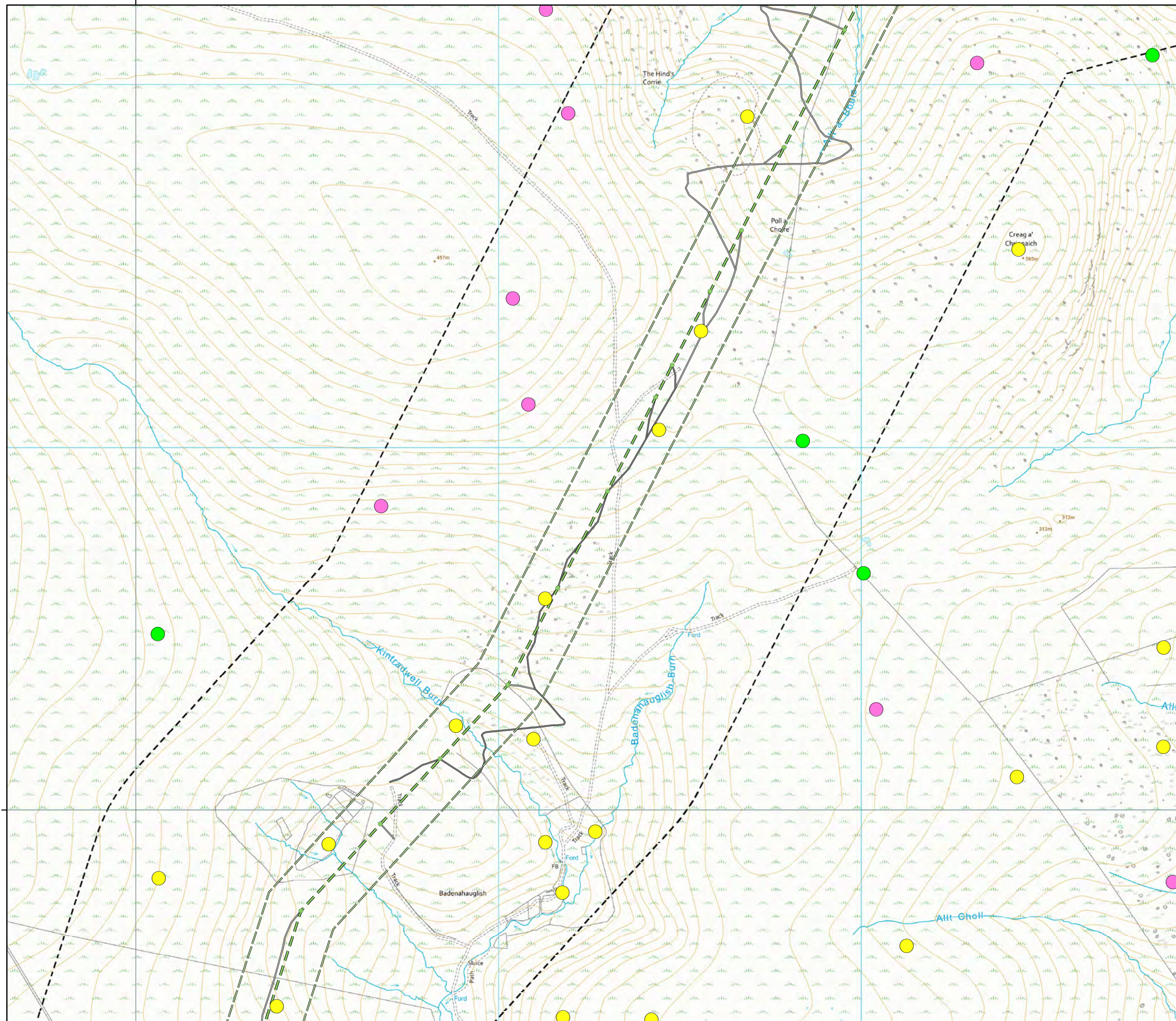


© Crown copyright 2025. All rights reserved.
Ordnance survey licence number AC0000808122.

20/01/2025 79300/OR/088d
Drawn by: AF Checked by: TH Approved by: JW

290000

910000



Beauly to Spittal



Figure 5a
Meadow Pipit Breeding
Territories 2023 - Map 26

Key

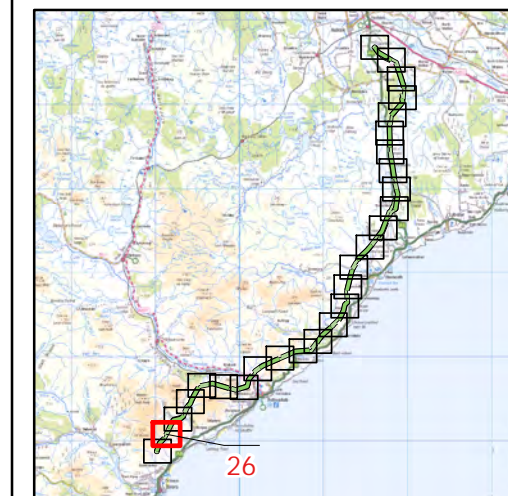
OHL Route Alignment and Tracks

- OHL Alignment
- Limit of Deviation for OHL (LoD)
- 500m buffer from LoD
- Tower
- Permanent access track
- Temporary access track

Meadow pipit

Breeding Status

- Confirmed
- Probable
- Possible
- Non-breeding



atmos
CONSULTING

0 500
Meters

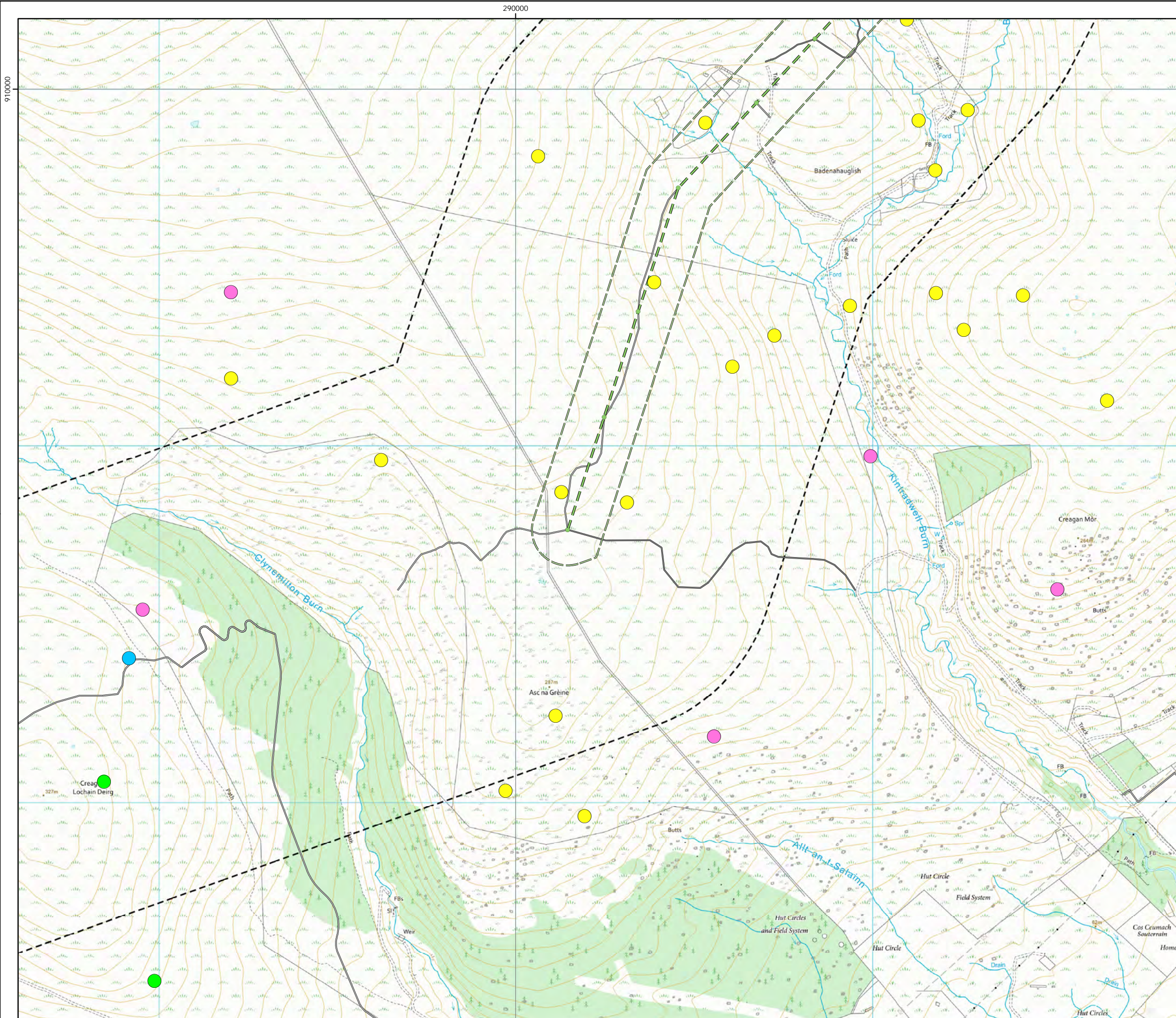


Scale @ A3:
1:10,000



© Crown copyright 2025. All rights reserved.
Ordnance survey licence number AC0000808122.

20/01/2025 79300/OR/088d
Drawn by: AF Checked by: TH Approved by: JW

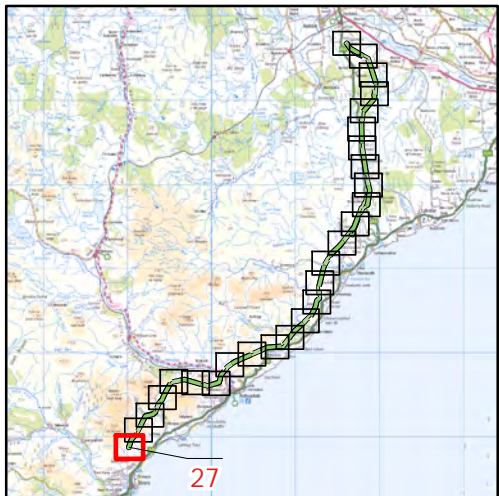


Beaulieu to Spittal



Figure 5a
Meadow Pipit Breeding
Territories 2023 - Map 27

- Key**
- OHL Route Alignment and Tracks**
- OHL Alignment
 - Limit of Deviation for OHL (LoD)
 - 500m buffer from LoD
 - Tower
 - Permanent access track
 - Temporary access track
- Meadow pipit**
- Breeding Status**
- Confirmed
 - Probable
 - Possible
 - Non-breeding



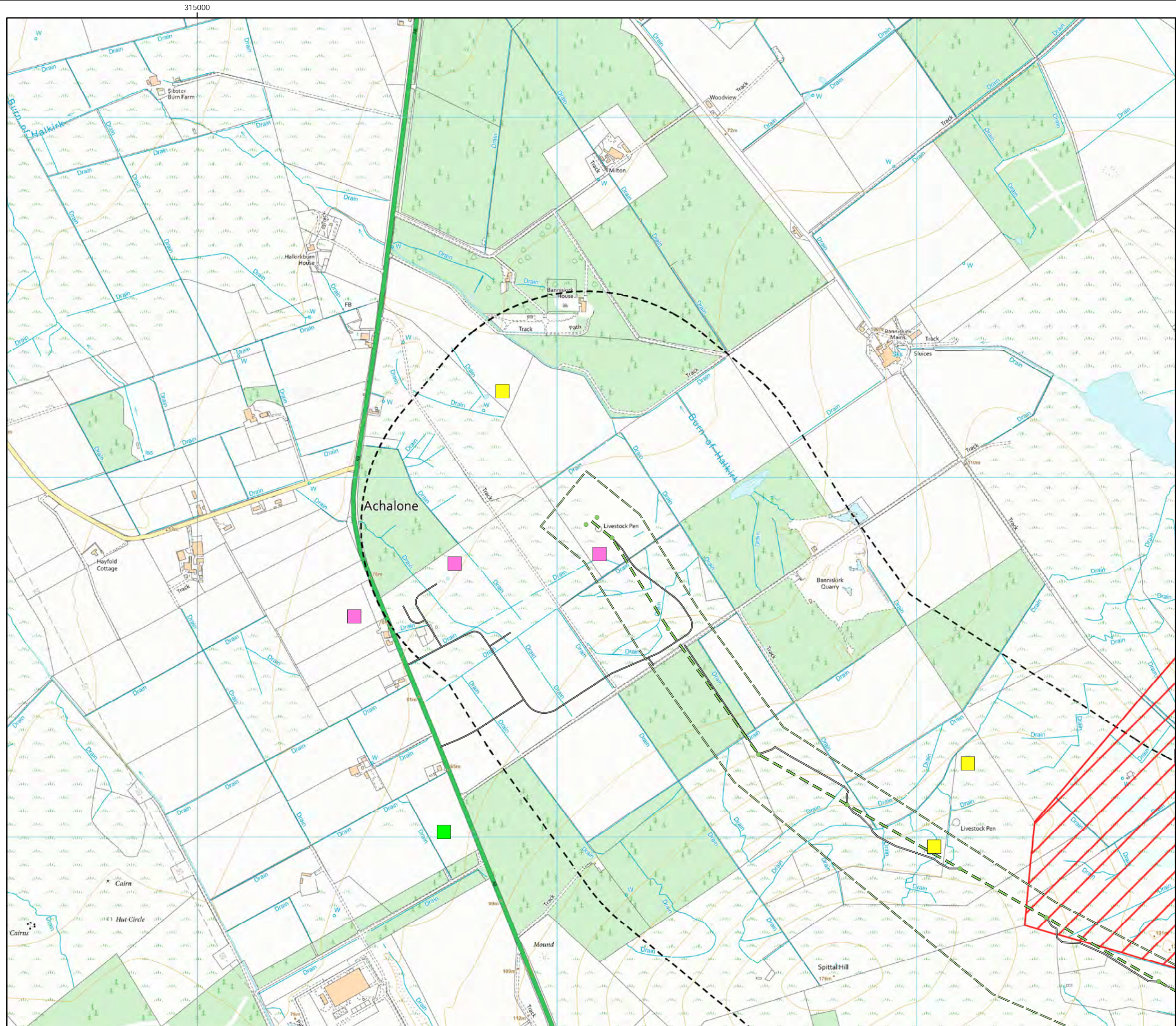
0 500
Meters



Scale @ A3:
1:10,000



© Crown copyright 2025. All rights reserved.
Ordnance survey licence number AC0000808122.



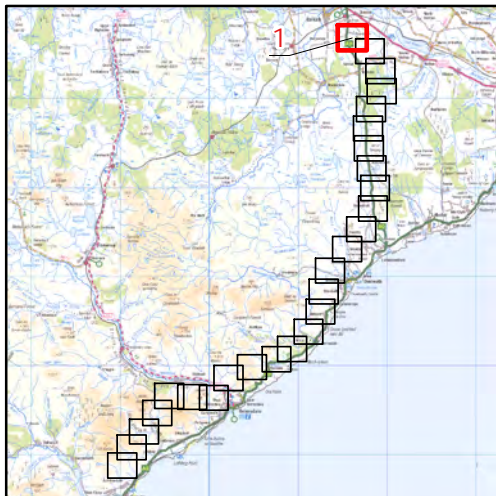
Beauly to Spittal



Figure 5b
Skylark Breeding
Territories - 2023 Map 1

- Key**
- OHL Route Alignment and Tracks
 - OHL Alignment
 - Limit of Deviation for OHL (LoD)
 - 500m buffer from LoD
 - Tower
 - Permanent access track
 - Temporary access track
 - No Access Areas - surveyed from public roads

- Skylark**
- Breeding Status**
- Confirmed
 - Probable
 - Possible
 - Non-breeding



0 500
Meters



Scale @ A3:
1:10,000



© Crown copyright 2025. All rights reserved.
Ordnance survey licence number AC0000808122.

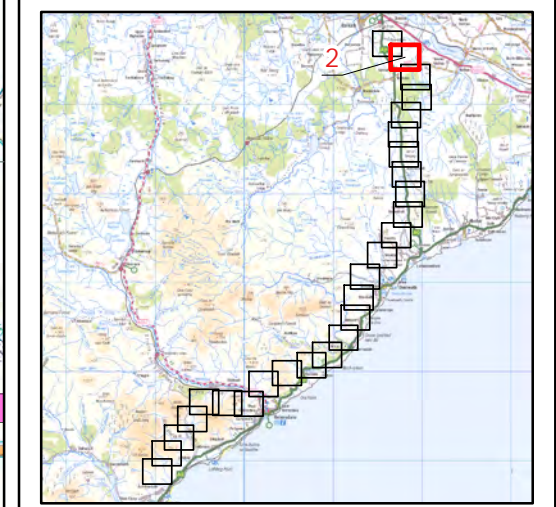
20/01/2025 79300/OR/088e
Drawn by: AF Checked by: TH Approved by: JW

Beauly to Spittal



Figure 5b
Skylark Breeding
Territories - 2023 Map 2

- Key**
- OHL Route Alignment and Tracks**
- OHL Alignment
 - Limit of Deviation for OHL (LoD)
 - 500m buffer from LoD
 - Tower
 - Permanent access track
 - Temporary access track
 - No Access Areas - surveyed from public roads
- Skylark**
- Breeding Status**
- Confirmed
 - Probable
 - Possible
 - Non-breeding



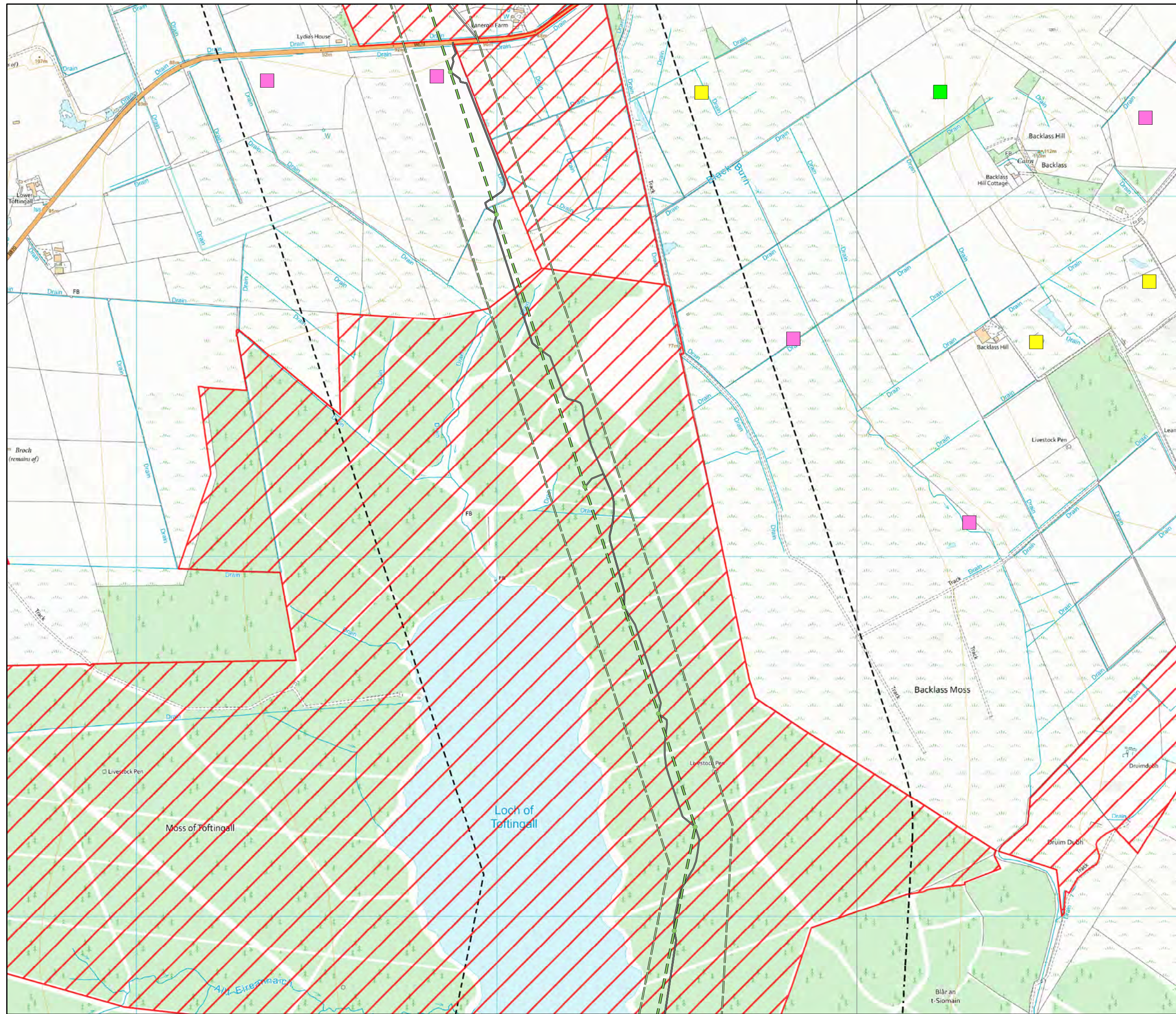
0500

Meters

N

Scale @ A3:
1:10,000

© Crown copyright 2025. All rights reserved.
Ordnance survey licence number AC0000808122.

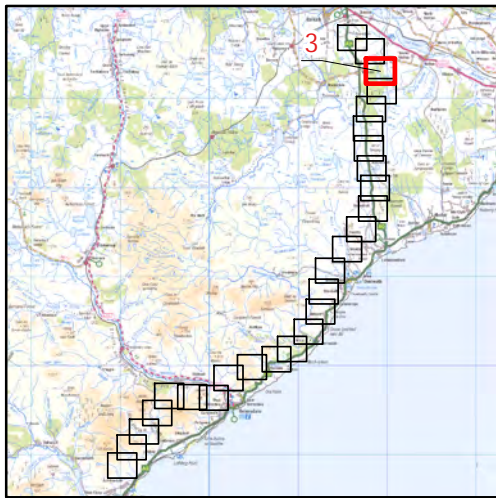


Beauly to Spittal



Figure 5b
Skylark Breeding
Territories - 2023 Map 3

- Key**
- OHL Route Alignment and Tracks**
- OHL Alignment
 - Limit of Deviation for OHL (LoD)
 - 500m buffer from LoD
 - Tower
 - Permanent access track
 - Temporary access track
 - No Access Areas - surveyed from public roads
- Skylark**
- Breeding Status**
- Confirmed
 - Probable
 - Possible
 - Non-breeding



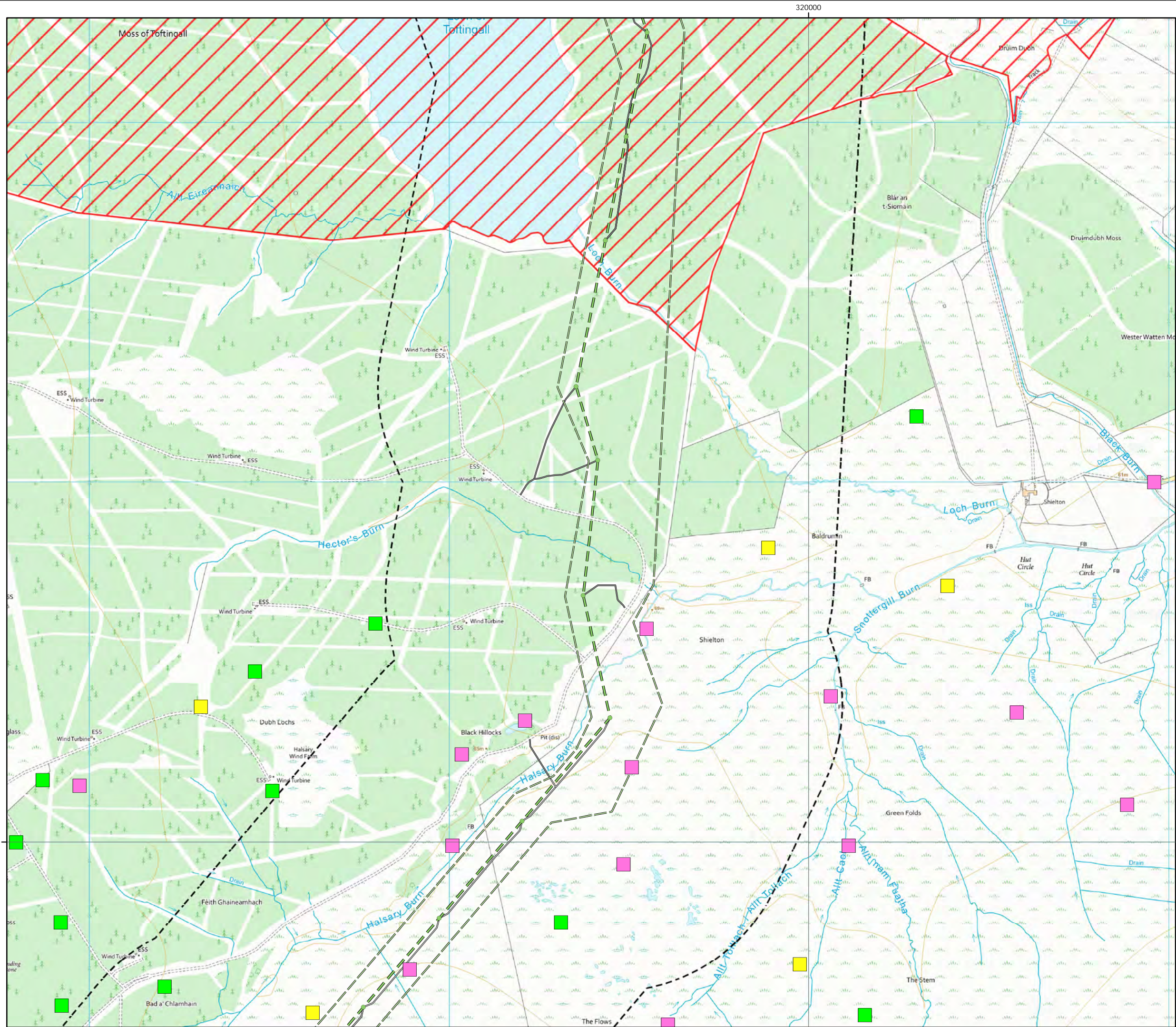
0 500
Meters



Scale @ A3:
1:10,000



© Crown copyright 2025. All rights reserved.
Ordnance survey licence number AC0000808122.

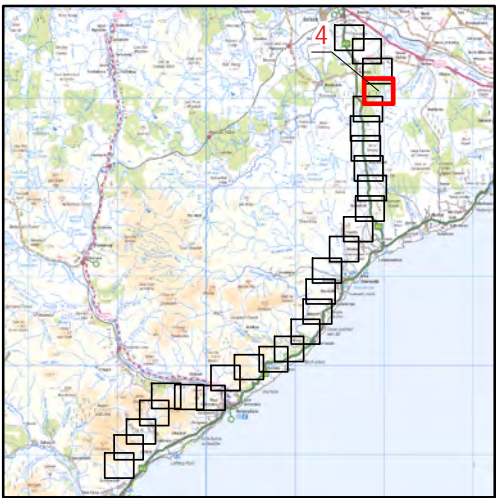


Beauly to Spittal



Figure 5b
Skylark Breeding
Territories - 2023 Map 4

- Key**
- OHL Route Alignment and Tracks**
- OHL Alignment
 - Limit of Deviation for OHL (LoD)
 - 500m buffer from LoD
 - Tower
 - Permanent access track
 - Temporary access track
 - No Access Areas - surveyed from public roads
- Skylark**
- Breeding Status**
- Confirmed
 - Probable
 - Possible
 - Non-breeding



0 500
Meters



Scale @ A3:
1:10,000



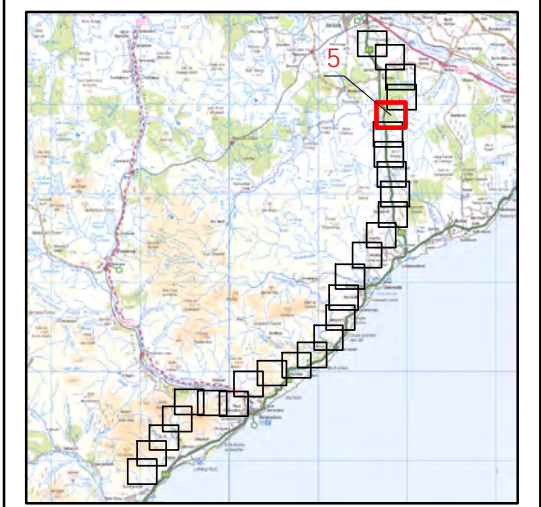
© Crown copyright 2025. All rights reserved.
Ordnance survey licence number AC0000808122.

Beauly to Spittal



Figure 5b
Skylark Breeding Territories - 2023 Map 5

- Key**
- OHL Route Alignment and Tracks**
- OHL Alignment
 - Limit of Deviation for OHL (LoD)
 - 500m buffer from LoD
 - Tower
 - Permanent access track
 - Temporary access track
 - No Access Areas - surveyed from public roads
- Skylark**
- Breeding Status**
- Confirmed
 - Probable
 - Possible
 - Non-breeding



0500

Meters

N

Scale @ A3:
1:10,000

© Crown copyright 2025. All rights reserved.
Ordnance survey licence number AC0000808122.

Beauly to Spittal



Figure 5b
Skylark Breeding
Territories - 2023 Map 6

Key

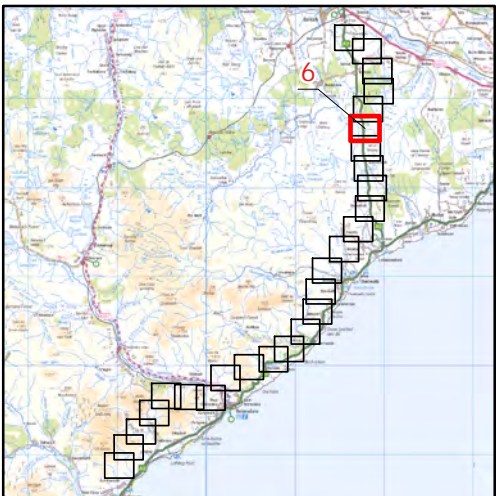
OHL Route Alignment and Tracks

- OHL Alignment
- Limit of Deviation for OHL (LoD)
- 500m buffer from LoD
- Tower
- Temporary access track
- No Access Areas - surveyed from public roads

Skylark

Breeding Status

- Confirmed
- Probable
- Possible
- Non-breeding



0 500
Meters

N

Scale @ A3:
1:10,000

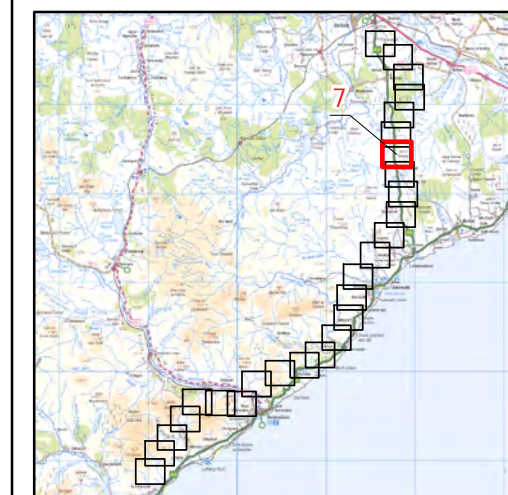
© Crown copyright 2025. All rights reserved.
Ordnance survey licence number AC0000808122.

Beauly to Spittal



Figure 5b
Skylark Breeding
Territories - 2023 Map 7

- Key**
- OHL Route Alignment and Tracks**
- OHL Alignment
 - Limit of Deviation for OHL (LoD)
 - 500m buffer from LoD
 - Tower
 - Permanent access track
 - Temporary access track
 - No Access Areas - surveyed from public roads
- Skylark Breeding Status**
- Confirmed
 - Probable
 - Possible
 - Non-breeding



atmos
CONSULTING

0 500
Meters



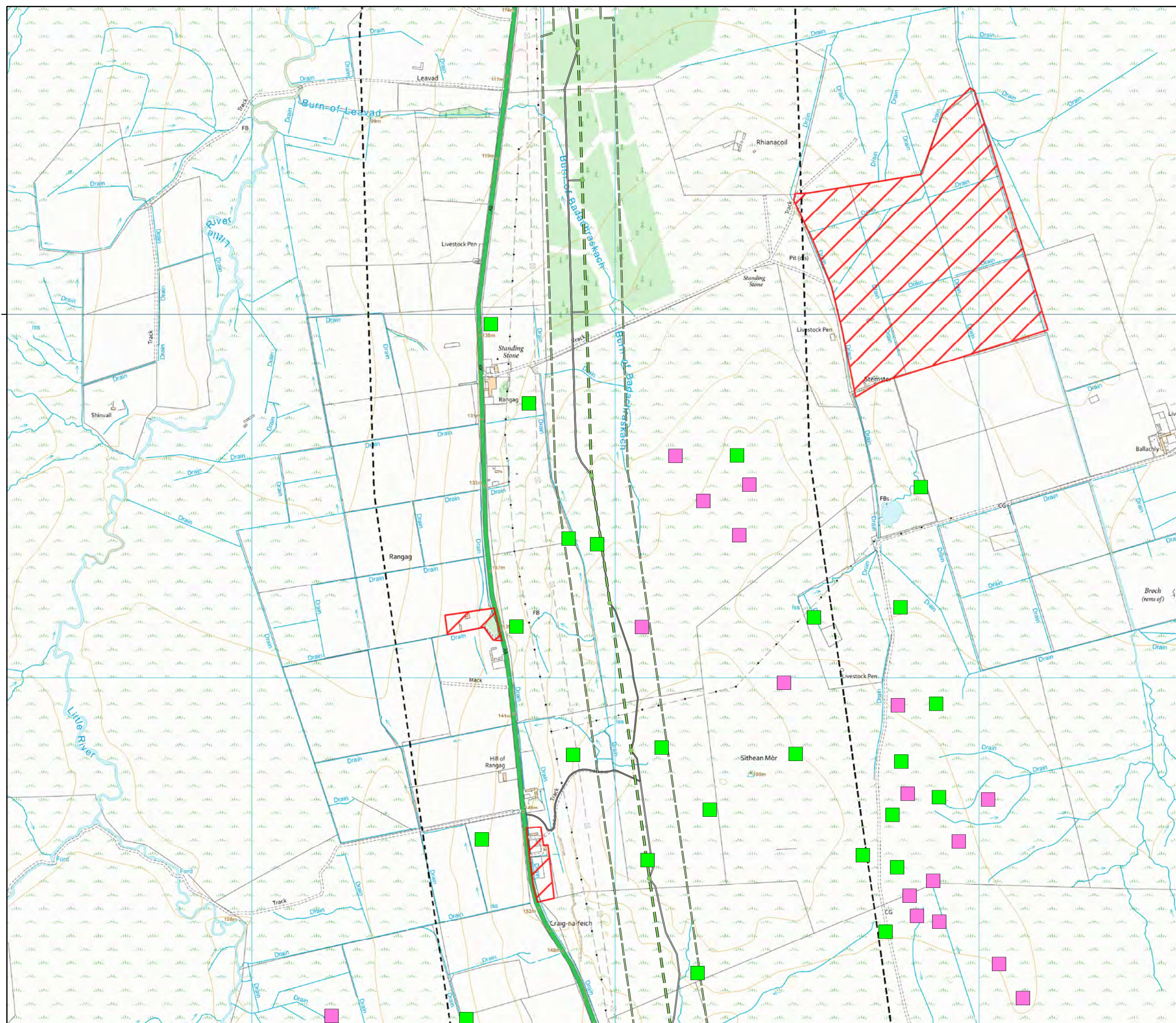
Scale @ A3:
1:10,000



© Crown copyright 2025. All rights reserved.
Ordnance survey licence number AC0000808122.

20/01/2025 79300/OR/088e
Drawn by: AF Checked by: TH Approved by: JW

945000



Beauly to Spittal



Figure 5b
Skylark Breeding
Territories - 2023 Map 8

Key

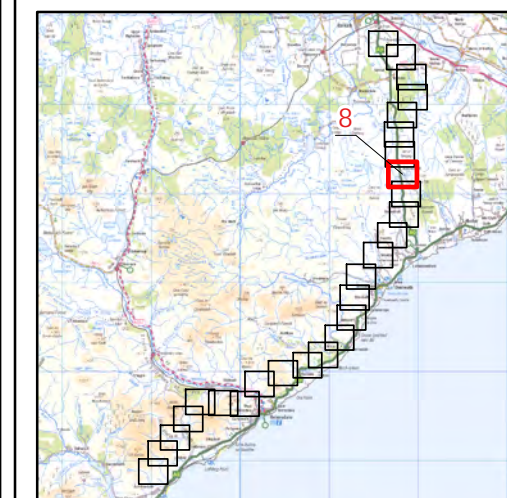
OHL Route Alignment and Tracks

- OHL Alignment
- Limit of Deviation for OHL (LoD)
- 500m buffer from LoD
- Tower
- Permanent access track
- Temporary access track
- No Access Areas - surveyed from public roads

Skylark

Breeding Status

- Confirmed
- Probable
- Possible
- Non-breeding



atmos
CONSULTING

0 500
Meters

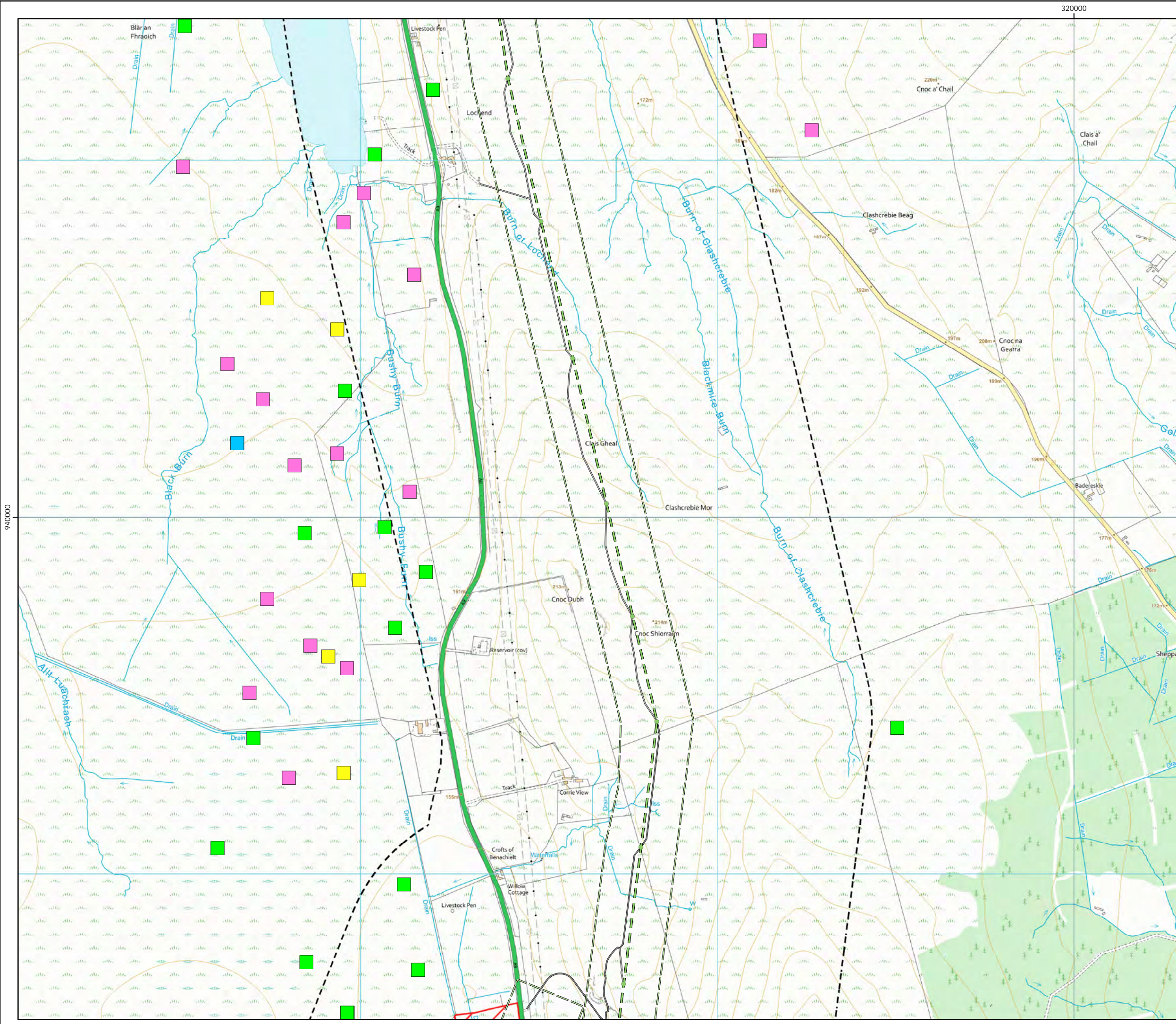


Scale @ A3:
1:10,000



© Crown copyright 2025. All rights reserved.
Ordnance survey licence number AC0000808122.

20/01/2025 79300/OR/088e
Drawn by: AF Checked by: TH Approved by: JW

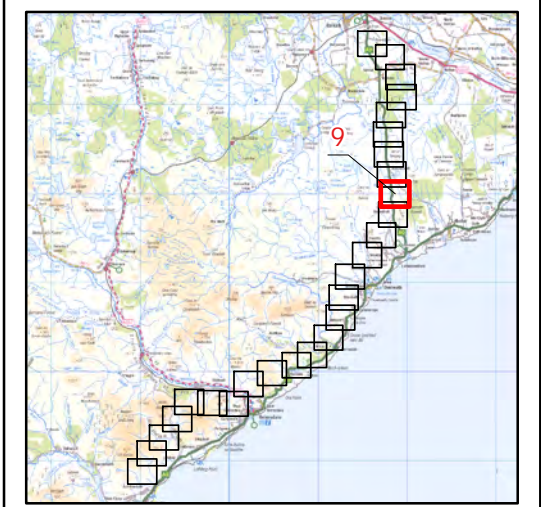


Beauly to Spittal



Figure 5b
Skylark Breeding
Territories - 2023 Map 9

- Key**
- OHL Route Alignment and Tracks**
- OHL Alignment
 - Limit of Deviation for OHL (LoD)
 - - - 500m buffer from LoD
 - Tower
 - Permanent access track
 - Temporary access track
 - ▭ No Access Areas - surveyed from public roads
- Skylark**
- Breeding Status**
- Confirmed
 - Probable
 - Possible
 - Non-breeding

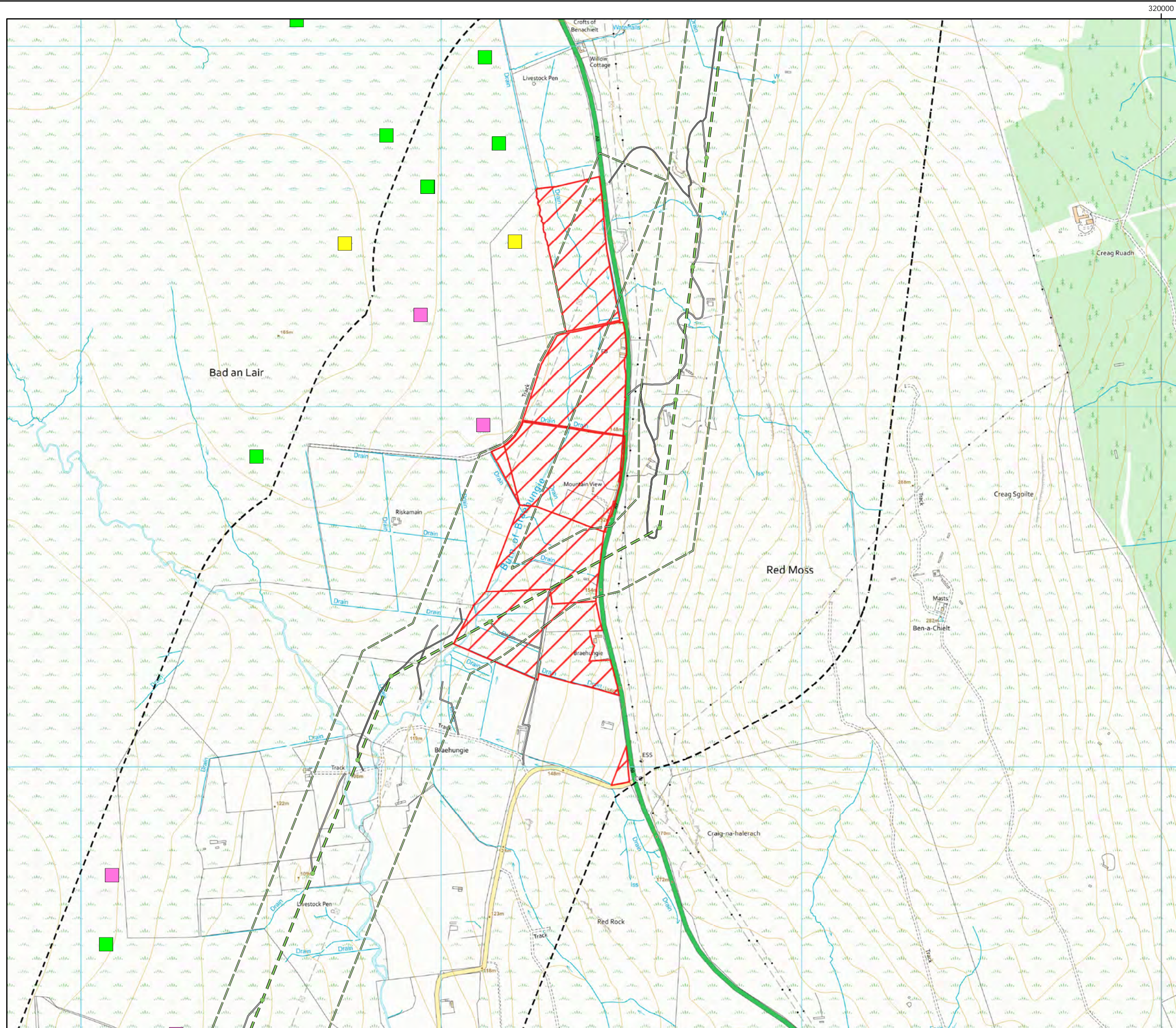


0 500
Meters

N

Scale @ A3:
1:10,000

© Crown copyright 2025. All rights reserved.
Ordnance survey licence number AC0000808122.

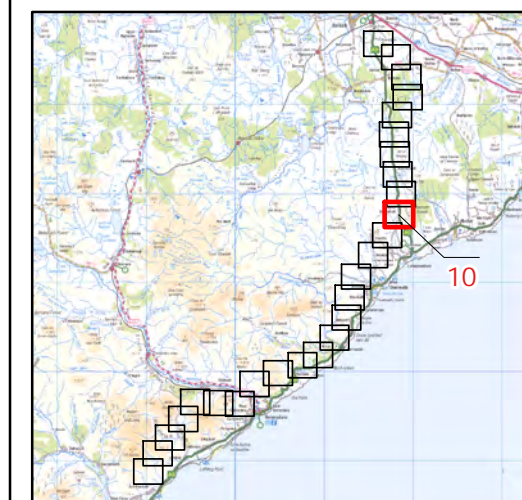


Beauly to Spittal

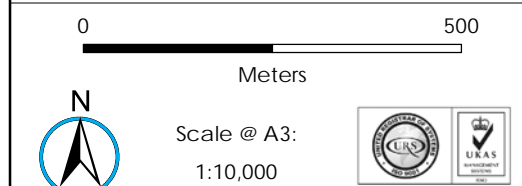


Figure 5b
Skylark Breeding
Territories - 2023 Map 10

- Key**
- OHL Route Alignment and Tracks**
- OHL Alignment
 - Limit of Deviation for OHL (LoD)
 - 500m buffer from LoD
 - Tower
 - Permanent access track
 - Temporary access track
 - No Access Areas - surveyed from public roads
- Skylark Breeding Status**
- Confirmed
 - Probable
 - Possible
 - Non-breeding



atmos
CONSULTING



© Crown copyright 2025. All rights reserved.
Ordnance survey licence number AC0000808122.

Beauly to Spittal



Figure 5b
Skylark Breeding
Territories - 2023 Map 11

Key

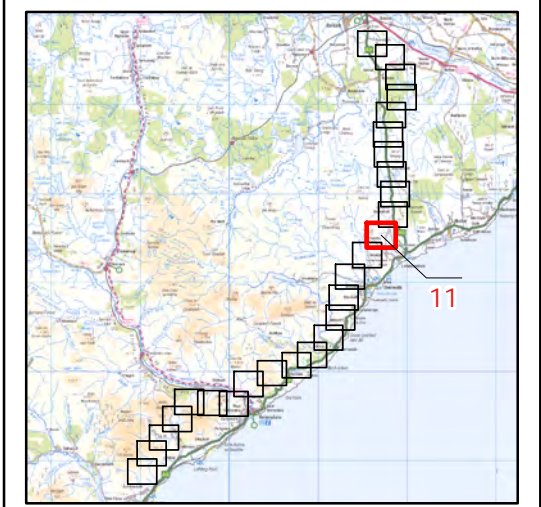
OHL Route Alignment and Tracks

- OHL Alignment
- Limit of Deviation for OHL (LoD)
- 500m buffer from LoD
- Tower
- Temporary access track
- No Access Areas - surveyed from public roads

Skylark

Breeding Status

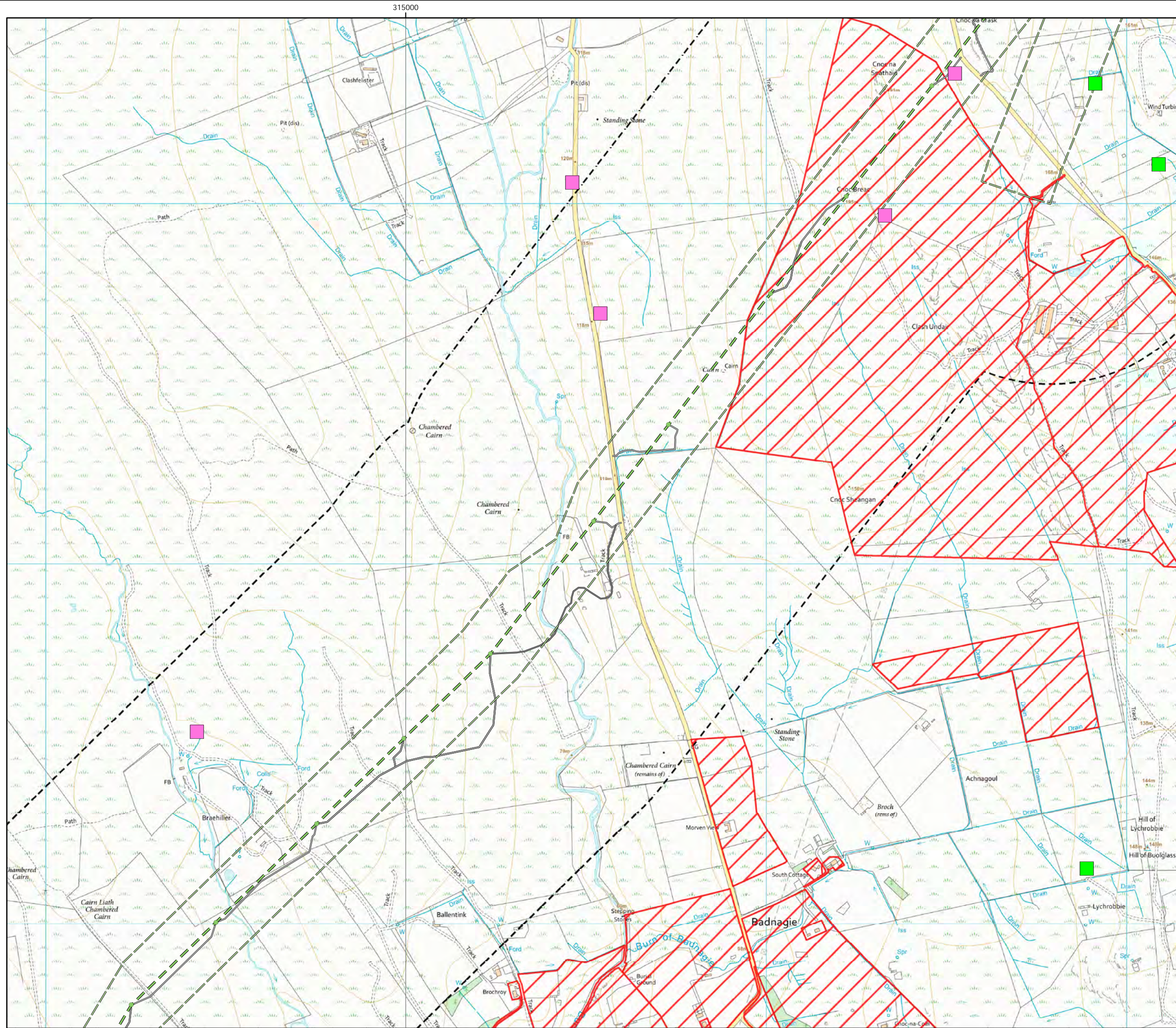
- Confirmed
- Probable
- Possible
- Non-breeding



0 500
Meters

Scale @ A3:
1:10,000

© Crown copyright 2025. All rights reserved.
Ordnance survey licence number AC0000808122.

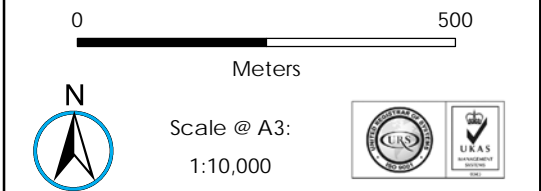
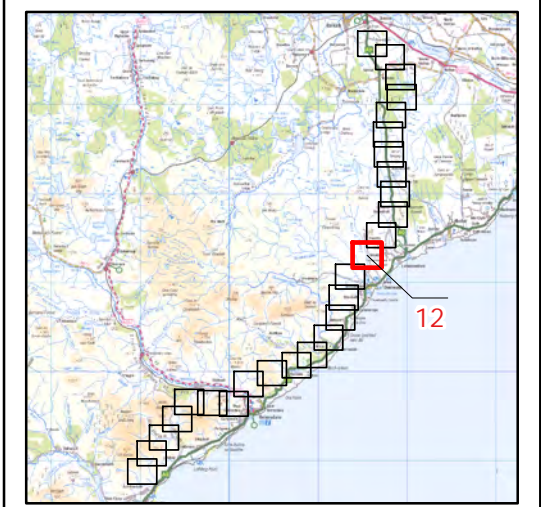


Beauly to Spittal



Figure 5b
Skylark Breeding
Territories - 2023 Map 12

- Key**
- OHL Route Alignment and Tracks**
- OHL Alignment
 - Limit of Deviation for OHL (LoD)
 - 500m buffer from LoD
 - Tower
 - Permanent access track
 - Temporary access track
 - No Access Areas - surveyed from public roads
- Skylark**
- Breeding Status**
- Confirmed
 - Probable
 - Possible
 - Non-breeding



© Crown copyright 2025. All rights reserved.
Ordnance survey licence number AC0000808122.