

Beauly to Spittal



Figure 5b
Skylark Breeding
Territories - 2023 Map 13

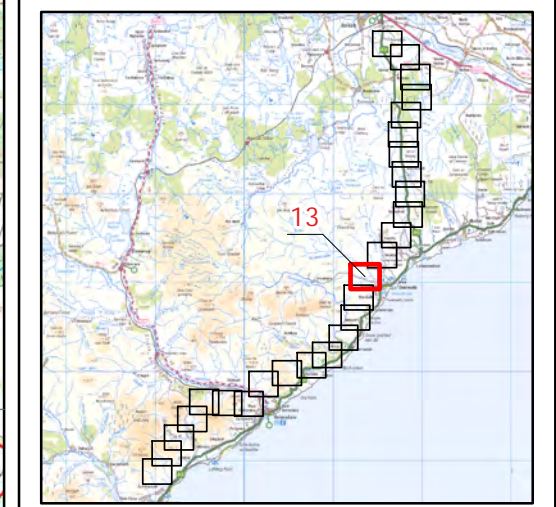
Key

OHL Route Alignment and Tracks

- OHL Alignment
- Limit of Deviation for OHL (LoD)
- 500m buffer from LoD
- Tower
- Permanent access track
- Temporary access track
- No Access Areas - surveyed from public roads

Skylark Breeding Status

- Confirmed
- Probable
- Possible
- Non-breeding



atmos CONSULTING

0 500 Meters

Scale @ A3: 1:10,000

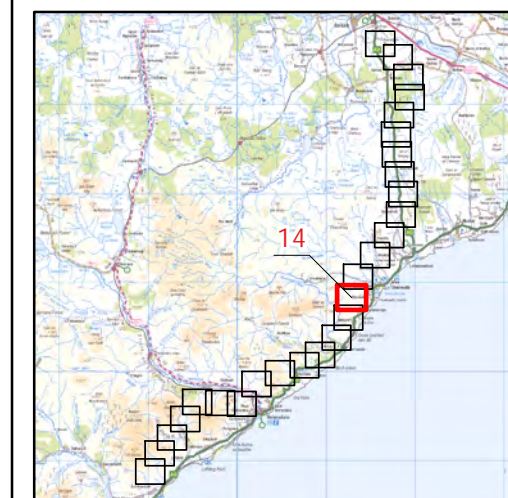
© Crown copyright 2025. All rights reserved. Ordnance survey licence number AC0000808122.

Beauly to Spittal



Figure 5b
Skylark Breeding
Territories - 2023 Map 14

- Key**
- OHL Route Alignment and Tracks**
- OHL Alignment
 - Limit of Deviation for OHL (LoD)
 - 500m buffer from LoD
 - Tower
 - Permanent access track
 - Temporary access track
 - No Access Areas - surveyed from public roads
- Skylark**
- Breeding Status**
- Confirmed
 - Probable
 - Possible
 - Non-breeding



atmos
CONSULTING

0 500
Meters



Scale @ A3:
1:10,000



© Crown copyright 2025. All rights reserved.
Ordnance survey licence number AC0000808122.

20/01/2025 79300/OR/088e
Drawn by: AF Checked by: TH Approved by: JW

Beauly to Spittal



Figure 5b
Skylark Breeding
Territories - 2023 Map 15

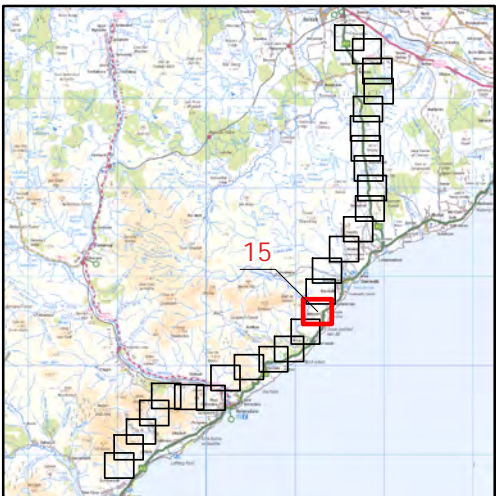
Key

OHL Route Alignment and Tracks

- OHL Alignment
- Limit of Deviation for OHL (LoD)
- 500m buffer from LoD
- Tower
- Permanent access track
- Temporary access track
- No Access Areas - surveyed from public roads

Skylark Breeding Status

- Confirmed
- Probable
- Possible
- Non-breeding



0 500
Meters

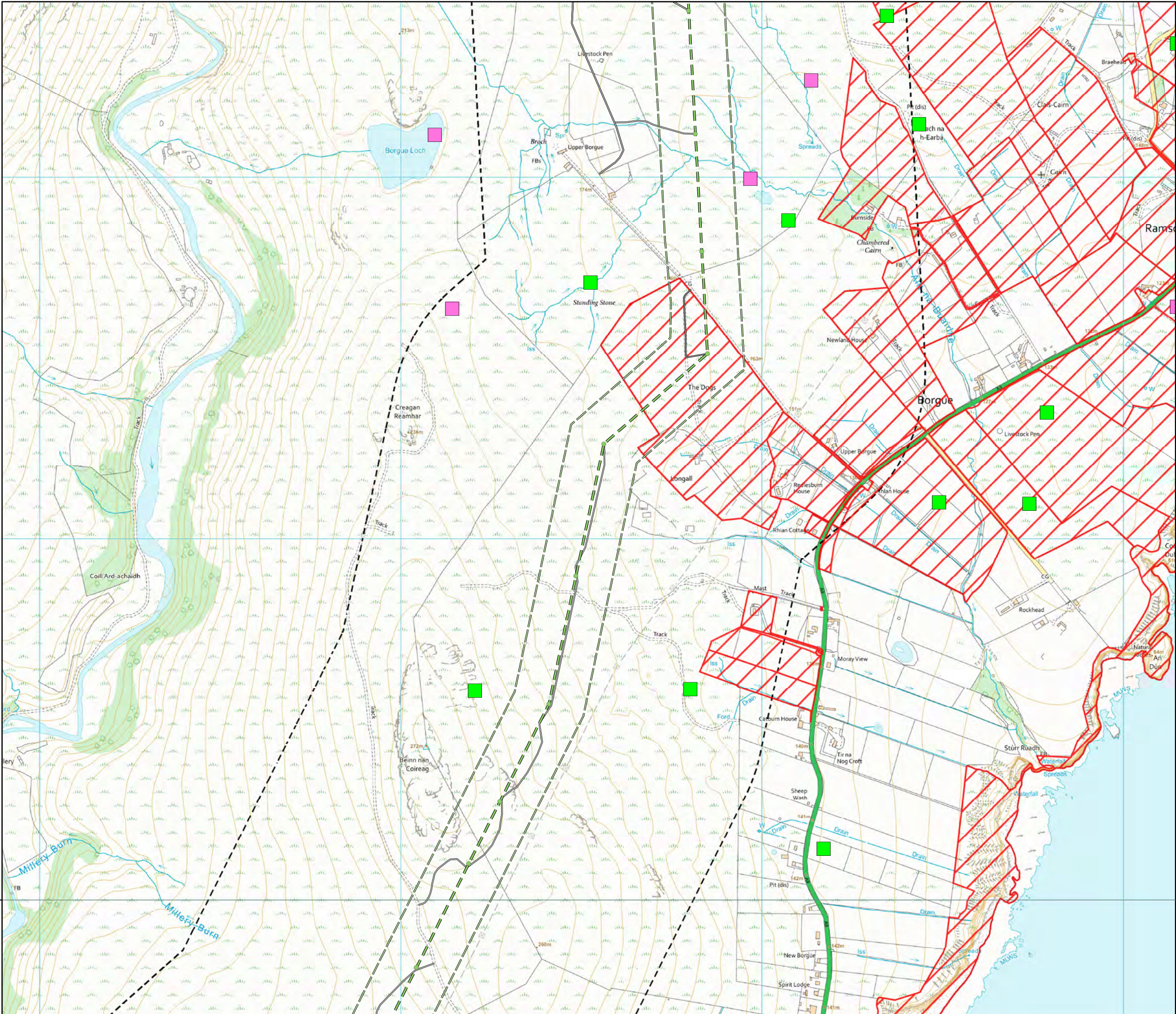


Scale @ A3:
1:10,000

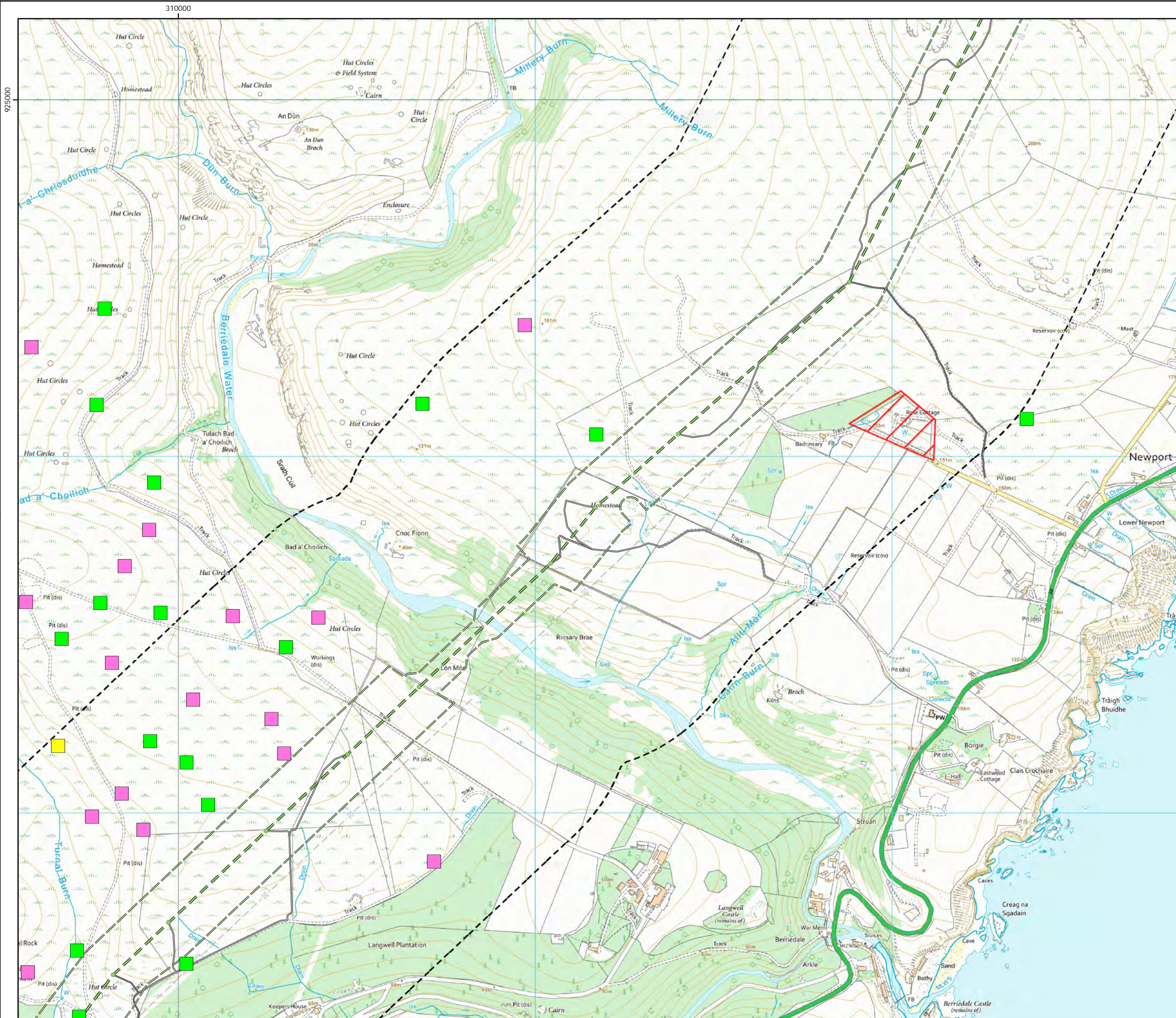


© Crown copyright 2025. All rights reserved.
Ordnance survey licence number AC0000808122.

20/01/2025 79300/OR/088e
Drawn by: AF Checked by: TH Approved by: JW



925000

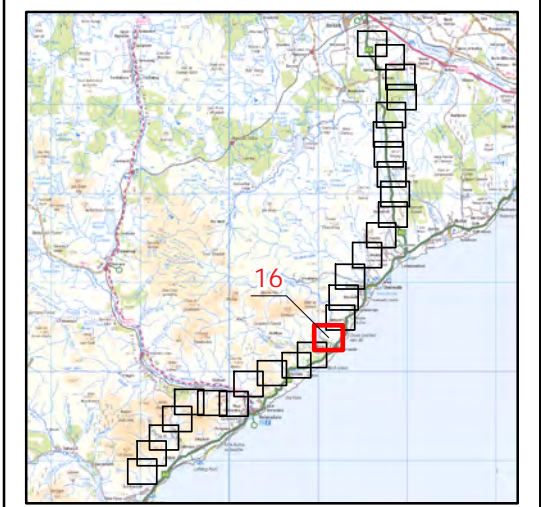


Beauly to Spittal



Figure 5b
Skylark Breeding
Territories - 2023 Map 16

- Key**
- OHL Route Alignment and Tracks**
- OHL Alignment
 - Limit of Deviation for OHL (LoD)
 - 500m buffer from LoD
 - Tower
 - Permanent access track
 - Temporary access track
 - No Access Areas - surveyed from public roads
- Skylark Breeding Status**
- Confirmed
 - Probable
 - Possible
 - Non-breeding



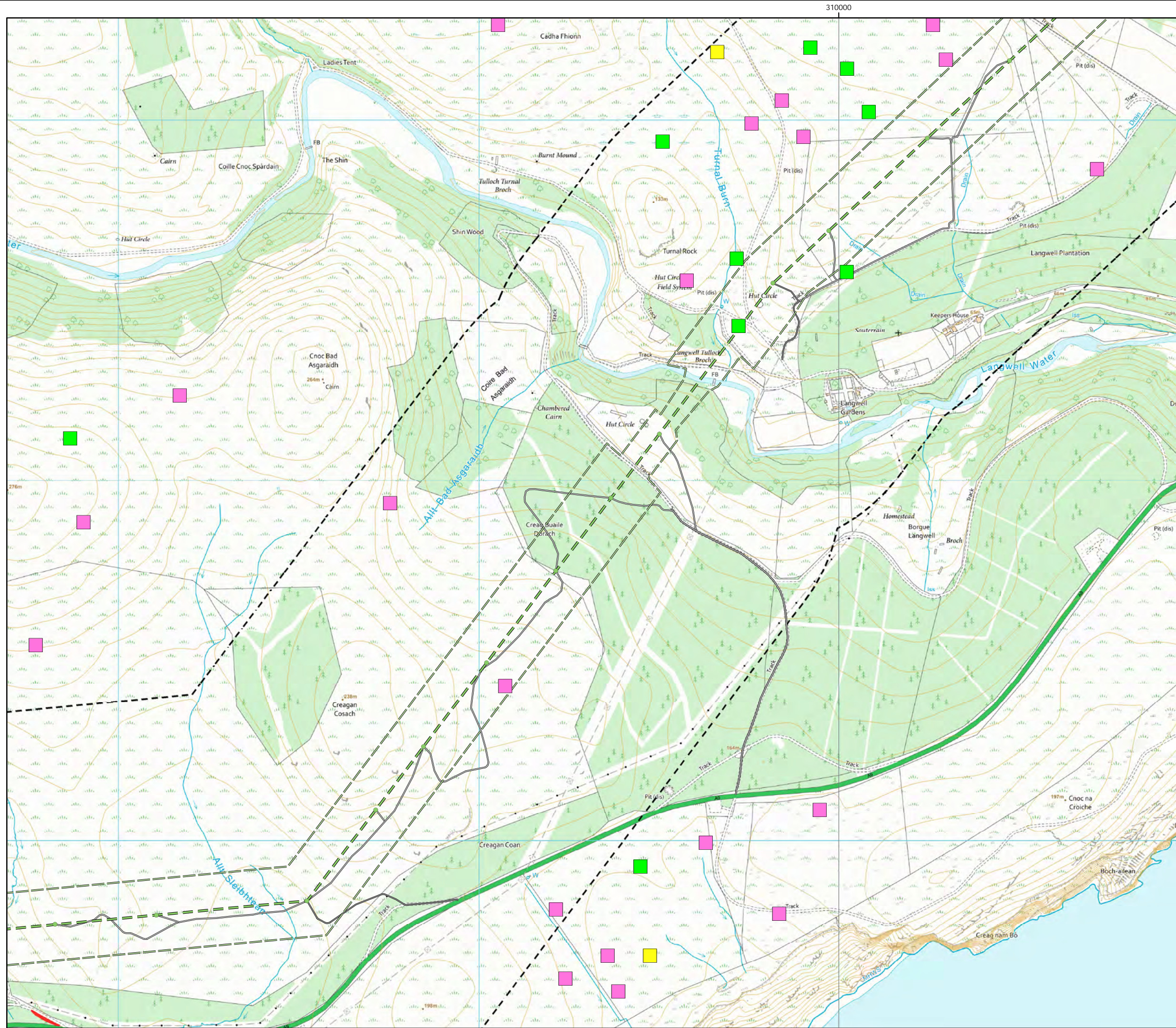
0500

Meters

N

Scale @ A3:
1:10,000

© Crown copyright 2025. All rights reserved.
Ordnance survey licence number AC0000808122.

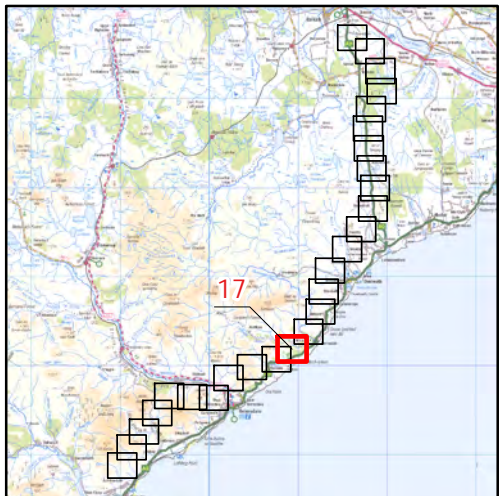


Beaulieu to Spittal



Figure 5b
Skylark Breeding
Territories - 2023 Map 17

- Key**
- OHL Route Alignment and Tracks**
- OHL Alignment
 - Limit of Deviation for OHL (LoD)
 - 500m buffer from LoD
 - Tower
 - Permanent access track
 - Temporary access track
 - No Access Areas - surveyed from public roads
- Skylark**
- Breeding Status**
- Confirmed
 - Probable
 - Possible
 - Non-breeding



0 500
Meters



Scale @ A3:
1:10,000



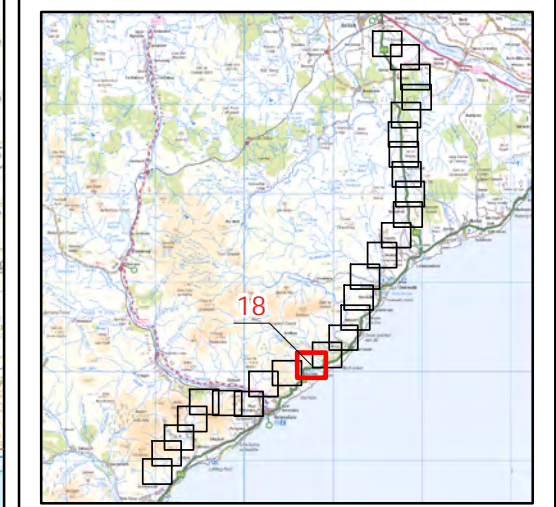
© Crown copyright 2025. All rights reserved.
Ordnance survey licence number AC0000808122.

Beauly to Spittal



Figure 5b
Skylark Breeding
Territories - 2023 Map 18

- Key**
- OHL Route Alignment and Tracks**
- OHL Alignment
 - Limit of Deviation for OHL (LoD)
 - 500m buffer from LoD
 - Tower
 - Permanent access track
 - Temporary access track
 - No Access Areas - surveyed from public roads
- Skylark**
- Breeding Status**
- Confirmed
 - Probable
 - Possible
 - Non-breeding



0500

Meters

N

Scale @ A3:
1:10,000

© Crown copyright 2025. All rights reserved.
Ordnance survey licence number AC0000808122.

Beauly to Spittal



Figure 5b
Skylark Breeding
Territories - 2023 Map 19

Key

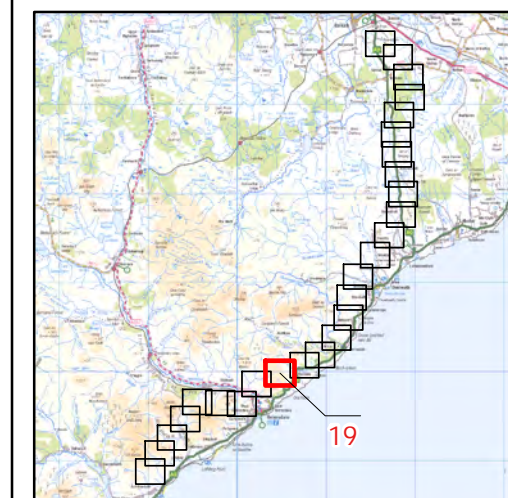
OHL Route Alignment and Tracks

- OHL Alignment
- Limit of Deviation for OHL (LoD)
- 500m buffer from LoD
- Tower
- Permanent access track
- Temporary access track
- No Access Areas - surveyed from public roads

Skylark

Breeding Status

- Confirmed
- Probable
- Possible
- Non-breeding



atmos
CONSULTING

0 500
Meters



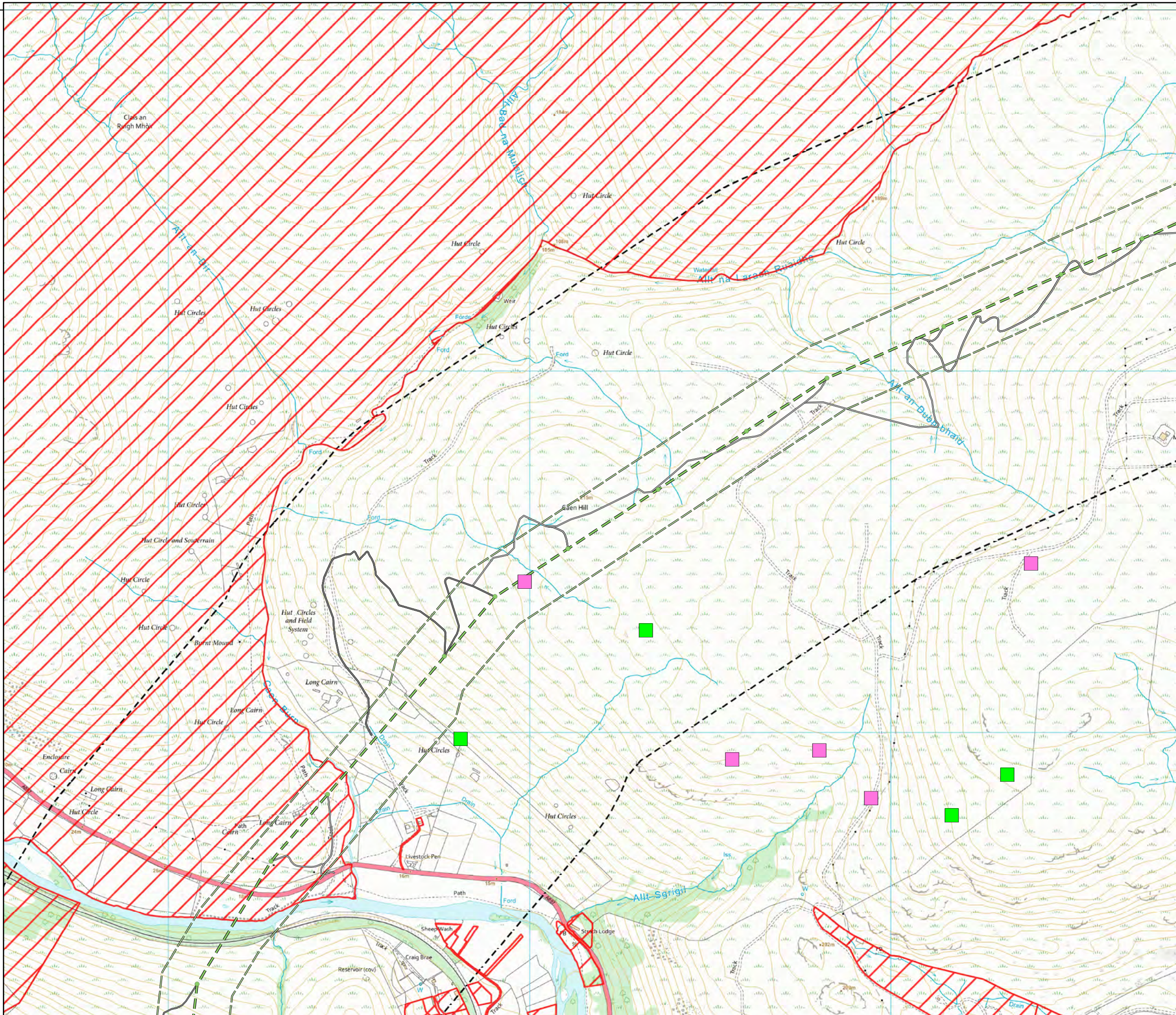
Scale @ A3:
1:10,000



© Crown copyright 2025. All rights reserved.
Ordnance survey licence number AC0000808122.

20/01/2025 79300/OR/088e
Drawn by: AF Checked by: TH Approved by: JW

920000

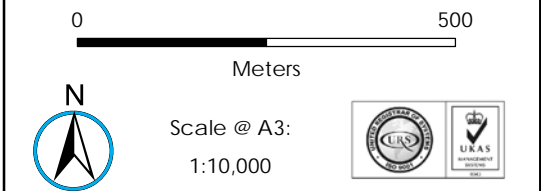
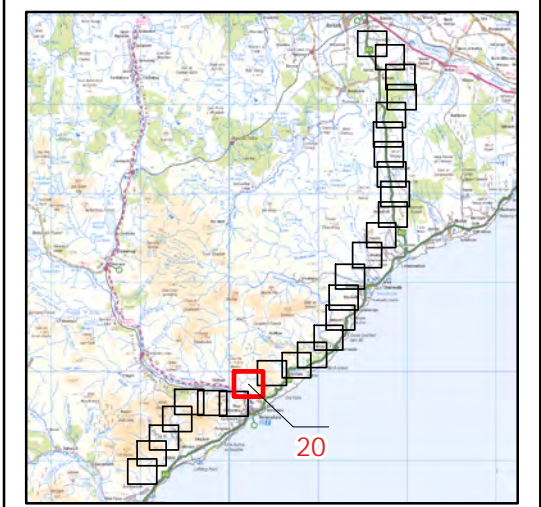


Beaulieu to Spittal

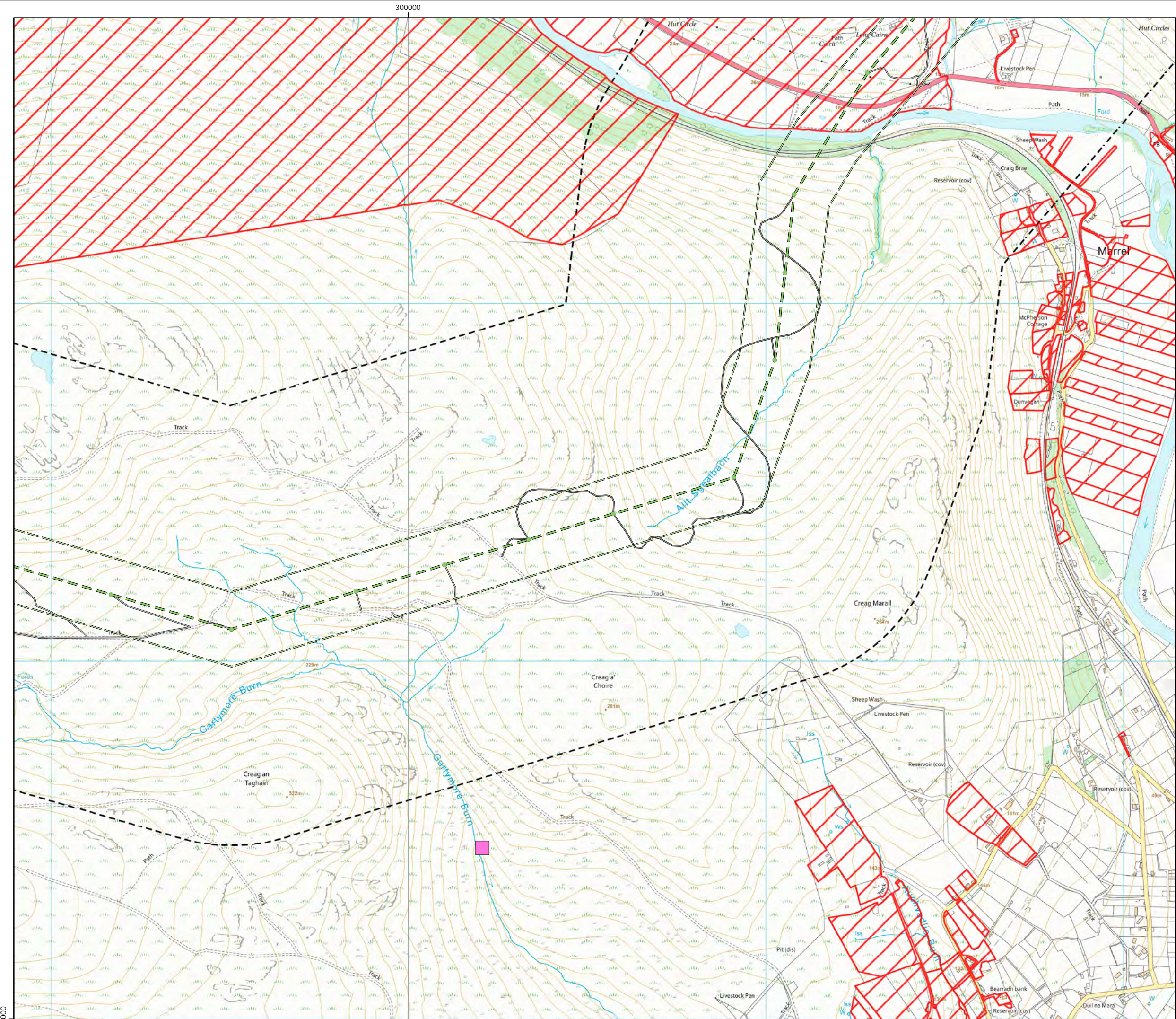


Figure 5b
Skylark Breeding
Territories - 2023 Map 20

- Key**
- OHL Route Alignment and Tracks**
- OHL Alignment
 - Limit of Deviation for OHL (LoD)
 - 500m buffer from LoD
 - Tower
 - Permanent access track
 - Temporary access track
 - No Access Areas - surveyed from public roads
- Skylark**
- Breeding Status**
- Confirmed
 - Probable
 - Possible
 - Non-breeding



© Crown copyright 2025. All rights reserved.
Ordnance survey licence number AC0000808122.



Beauly to Spittal



Figure 5b
Skylark Breeding
Territories - 2023 Map 21

Key

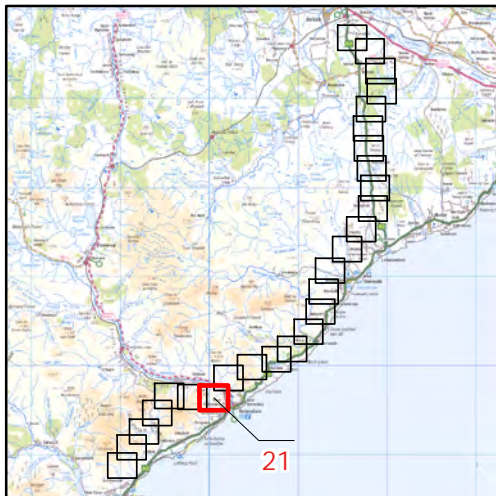
OHL Route Alignment and Tracks

- OHL Alignment
- Limit of Deviation for OHL (LoD)
- 500m buffer from LoD
- Tower
- Permanent access track
- Temporary access track
- No Access Areas - surveyed from public roads

Skylark

Breeding Status

- Confirmed
- Probable
- Possible
- Non-breeding



0 500
Meters

N

Scale @ A3:
1:10,000

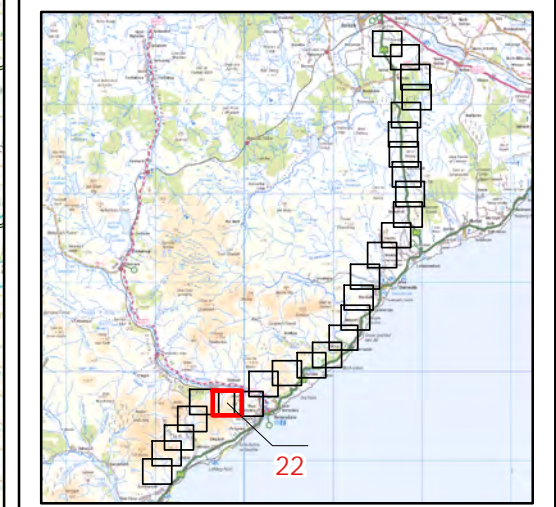
© Crown copyright 2025. All rights reserved.
Ordnance survey licence number AC0000808122.

Beauly to Spittal



Figure 5b
Skylark Breeding
Territories - 2023 Map 22

- Key**
- OHL Route Alignment and Tracks**
- OHL Alignment
 - Limit of Deviation for OHL (LoD)
 - 500m buffer from LoD
 - Tower
 - Temporary access track
 - No Access Areas - surveyed from public roads
- Skylark**
- Breeding Status**
- Confirmed
 - Probable
 - Possible
 - Non-breeding



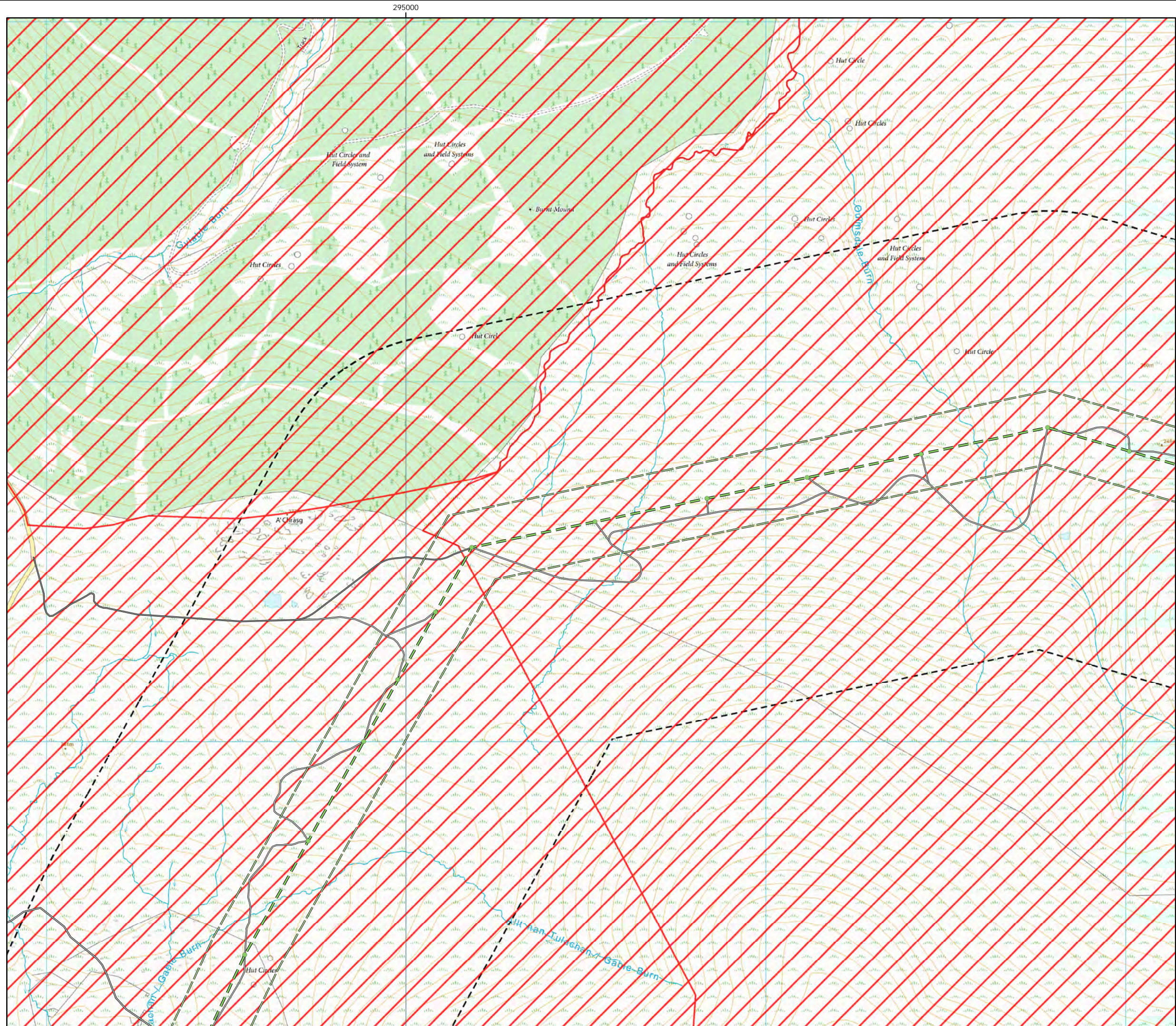
0500

Meters

N

Scale @ A3:
1:10,000

© Crown copyright 2025. All rights reserved.
Ordnance survey licence number AC0000808122.

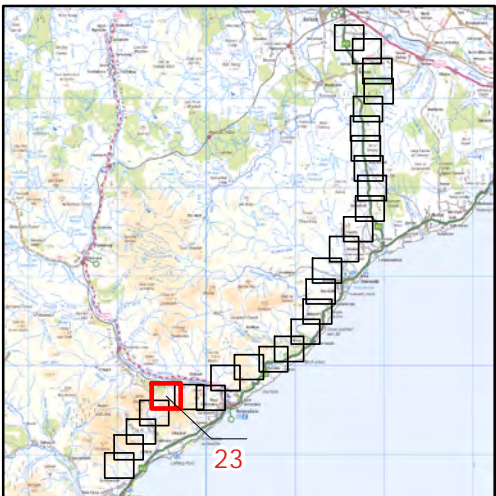


Beauly to Spittal



Figure 5b
Skylark Breeding
Territories - 2023 Map 23

- Key**
- OHL Route Alignment and Tracks**
- OHL Alignment
 - Limit of Deviation for OHL (LoD)
 - 500m buffer from LoD
 - Tower
 - Permanent access track
 - Temporary access track
 - No Access Areas - surveyed from public roads
- Skylark**
- Breeding Status**
- Confirmed
 - Probable
 - Possible
 - Non-breeding



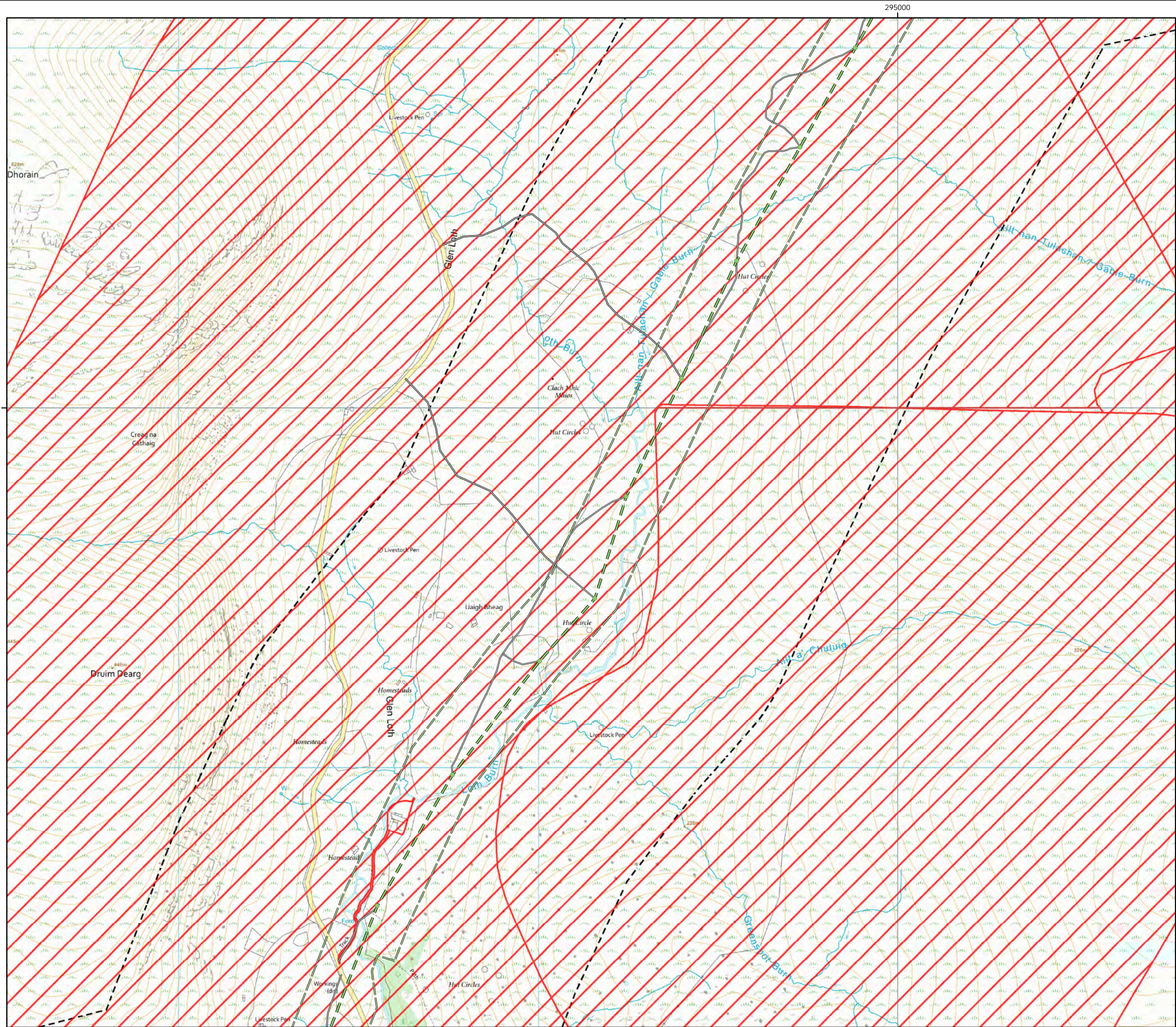
0 500
Meters



Scale @ A3:
1:10,000



© Crown copyright 2025. All rights reserved.
Ordnance survey licence number AC0000808122.

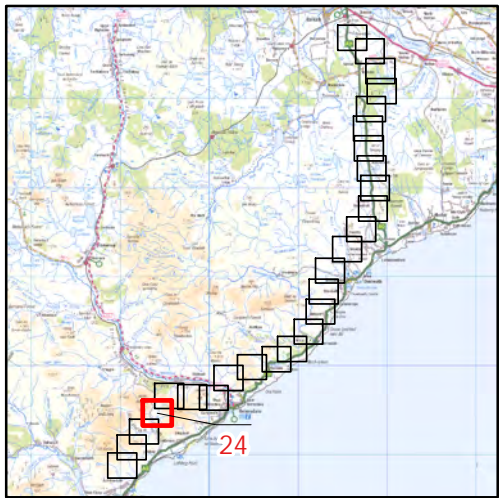


Beauly to Spittal



Figure 5b
Skylark Breeding
Territories - 2023 Map 24

- Key**
- OHL Route Alignment and Tracks**
- OHL Alignment
 - Limit of Deviation for OHL (LoD)
 - 500m buffer from LoD
 - Tower
 - Temporary access track
 - No Access Areas - surveyed from public roads
- Skylark**
- Breeding Status**
- Confirmed
 - Probable
 - Possible
 - Non-breeding



0 500
Meters



Scale @ A3:
1:10,000



© Crown copyright 2025. All rights reserved.
Ordnance survey licence number AC0000808122.

20/01/2025 79300/OR/088e
Drawn by: AF Checked by: TH Approved by: JW

Beauly to Spittal



Figure 5b
Skylark Breeding
Territories - 2023 Map 25

Key

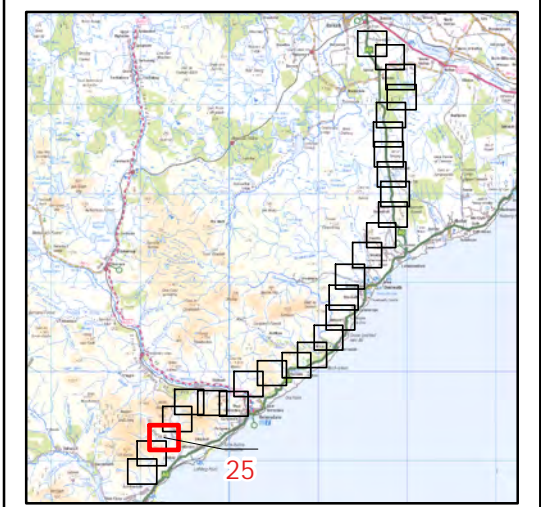
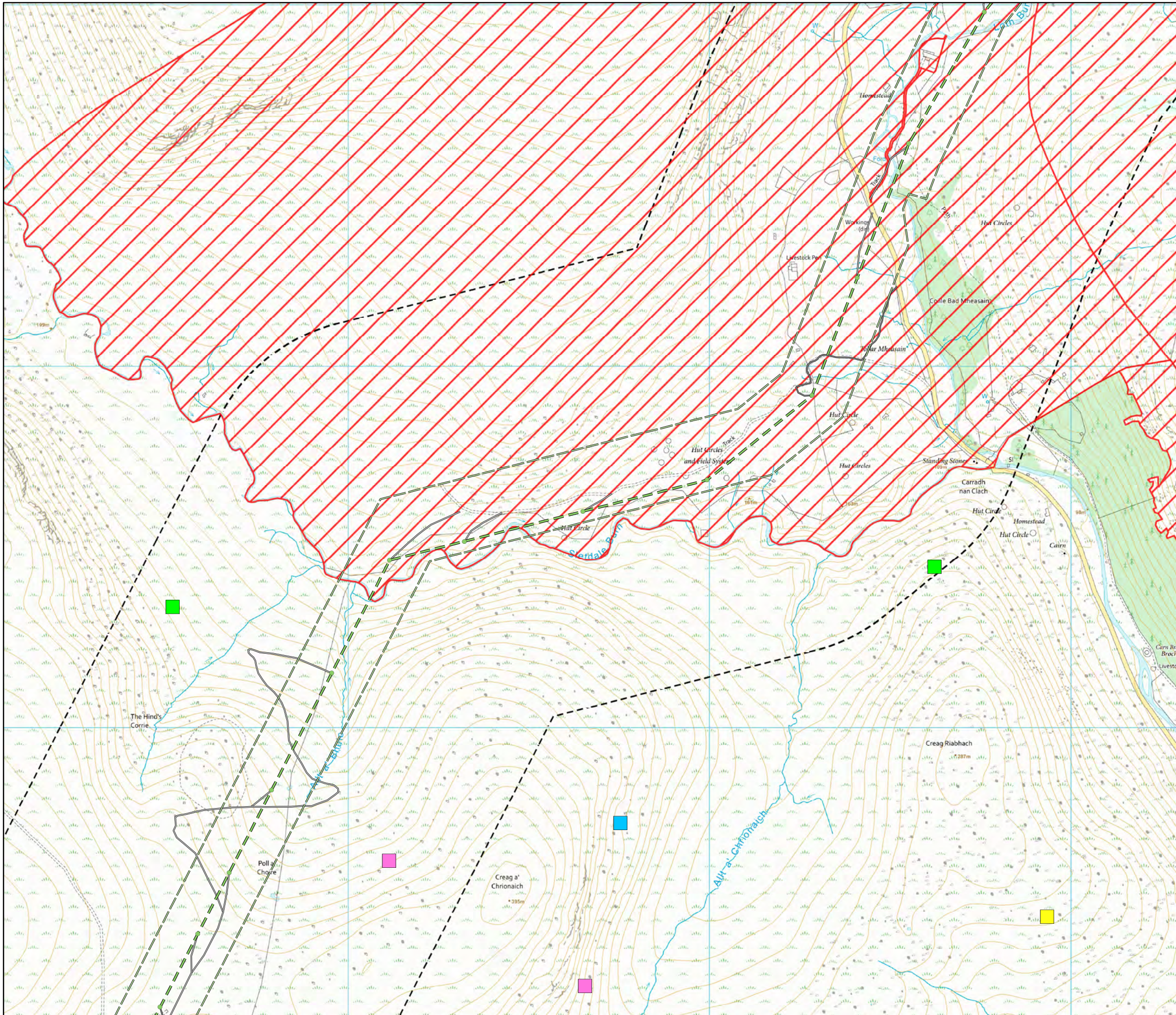
OHL Route Alignment and Tracks

- OHL Alignment
- Limit of Deviation for OHL (LoD)
- 500m buffer from LoD
- Tower
- Permanent access track
- Temporary access track
- No Access Areas - surveyed from public roads

Skylark

Breeding Status

- Confirmed
- Probable
- Possible
- Non-breeding



atmos
CONSULTING

0 500
Meters

N

Scale @ A3:
1:10,000

UKAS
URAS

© Crown copyright 2025. All rights reserved.
Ordnance survey licence number AC0000808122.