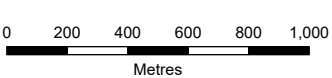
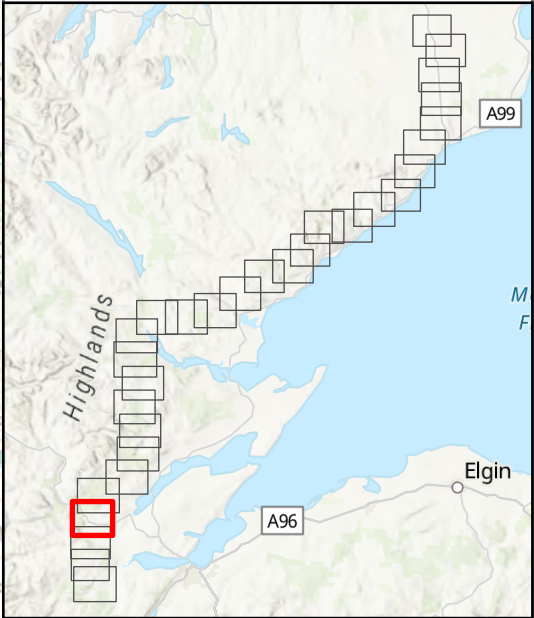


- Tower Location
- Alignment Section E
- Special Arrangement
- - - Limit of Deviation
- Temporary Tower Compound Area
- Equipotential Zone (EPZ) (Pulling Position)
- Temporary Access Track - Cut/Fill
- Temporary Access Track - Floating
- Temporary Access Track - Trackway Panel
- Permanent Access Track - Cut/Fill
- Permanent Access Track - Floating
- Alignment Section Break

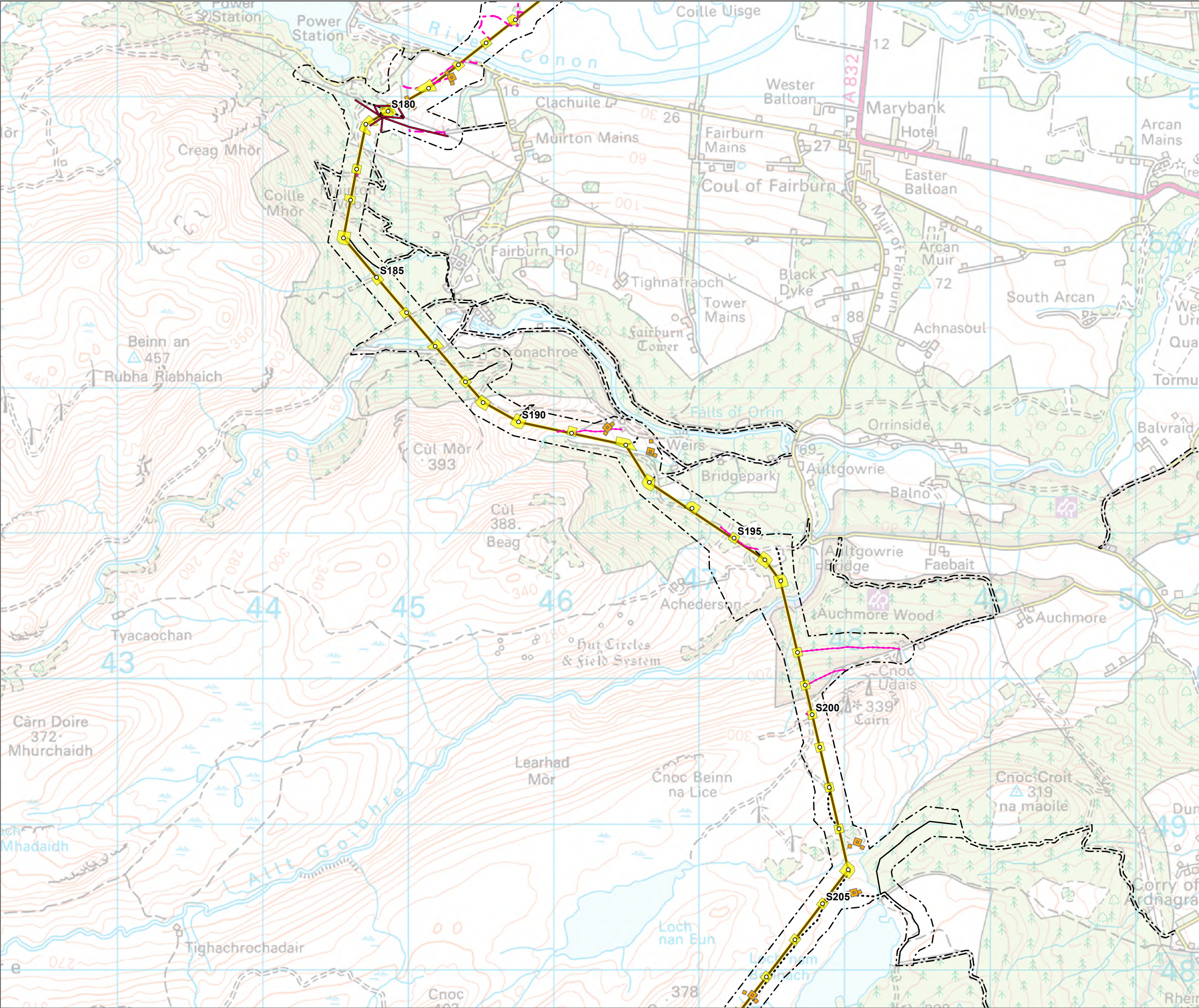


SCALE: See Scale Bar
SIZE: A3
PROJECT: 0720281
DATE: 06/08/2025

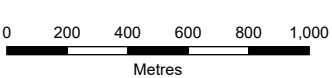
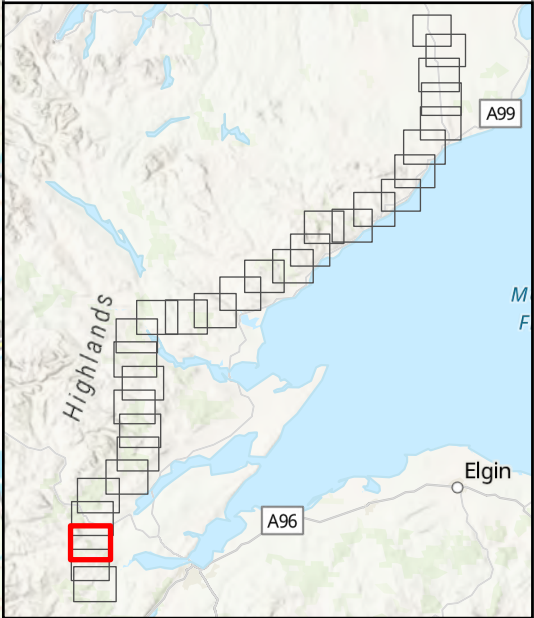
VERSION: A02
DRAWN: BW
CHECKED: CM
APPROVED: KG

Figure 1 - 27
Spittal - Loch Buidhe - Beauly 400 kV OHL
Connection
Peat Landslide Hazard and Risk Assessment
Site Layout





- Tower Location
- Alignment Section E
- Special Arrangement
- - - Limit of Deviation
- Temporary Tower Compound Area
- Equipotential Zone (EPZ) (Pulling Position)
- Temporary Access Track - Cut/Fill
- Temporary Access Track - Floating
- Temporary Access Track - Trackway Panel
- Permanent Access Track - Cut/Fill
- Permanent Access Track - Floating
- Alignment Section Break

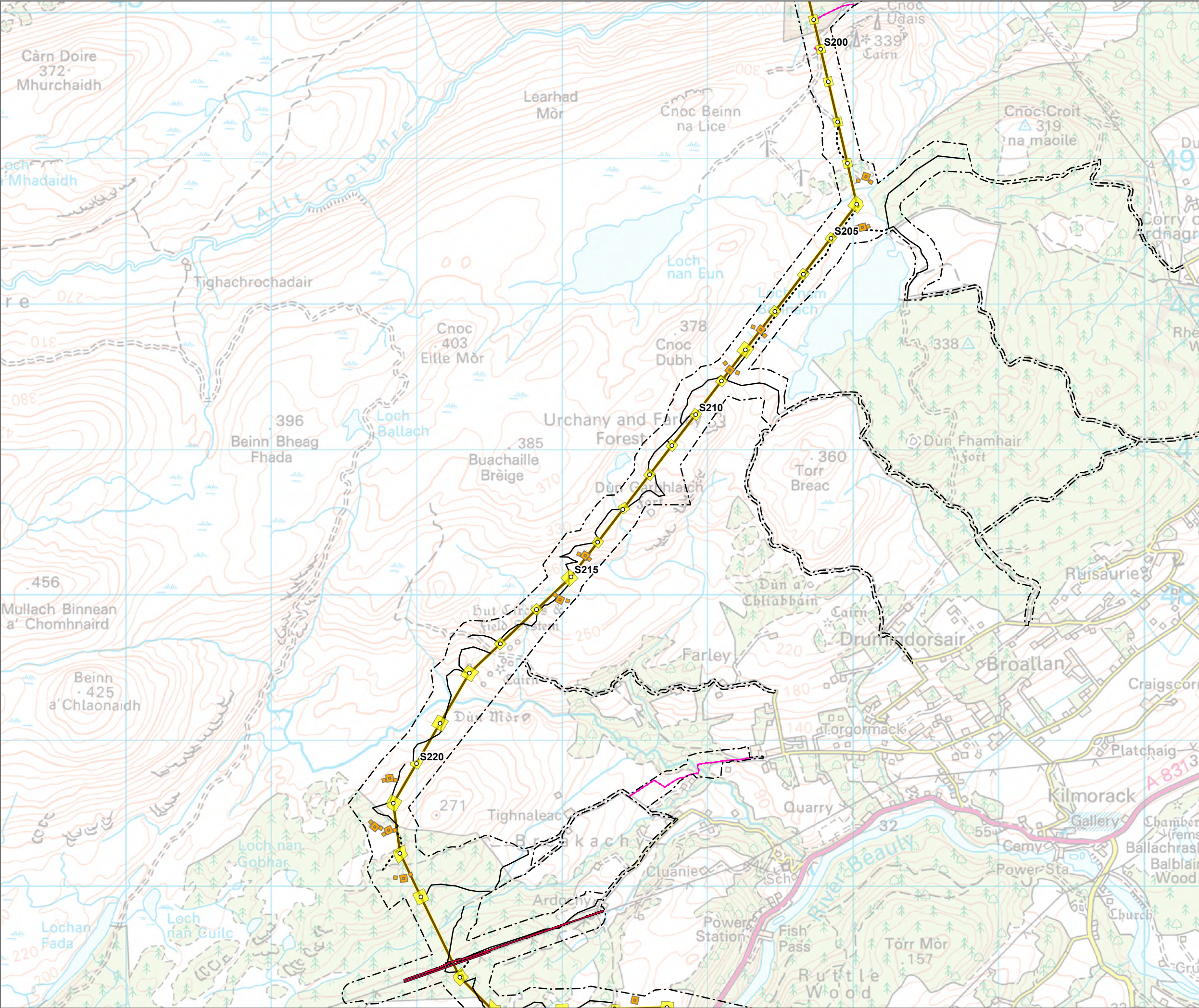


SCALE: See Scale Bar
SIZE: A3
PROJECT: 0720281
DATE: 06/08/2025

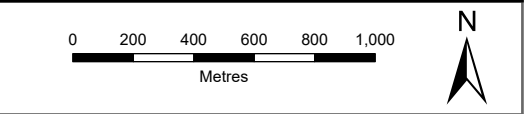
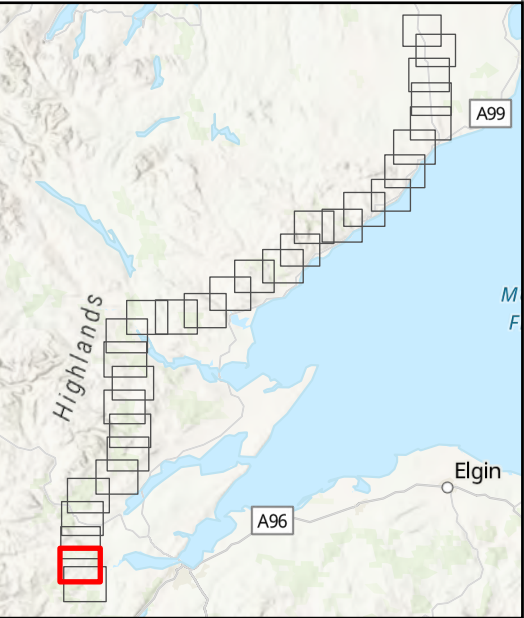
VERSION: A02
DRAWN: BW
CHECKED: CM
APPROVED: KG

Figure 1 - 28
Spittal - Loch Buidhe - Beauly 400 kV OHL
Connection
Peat Landslide Hazard and Risk Assessment
Site Layout



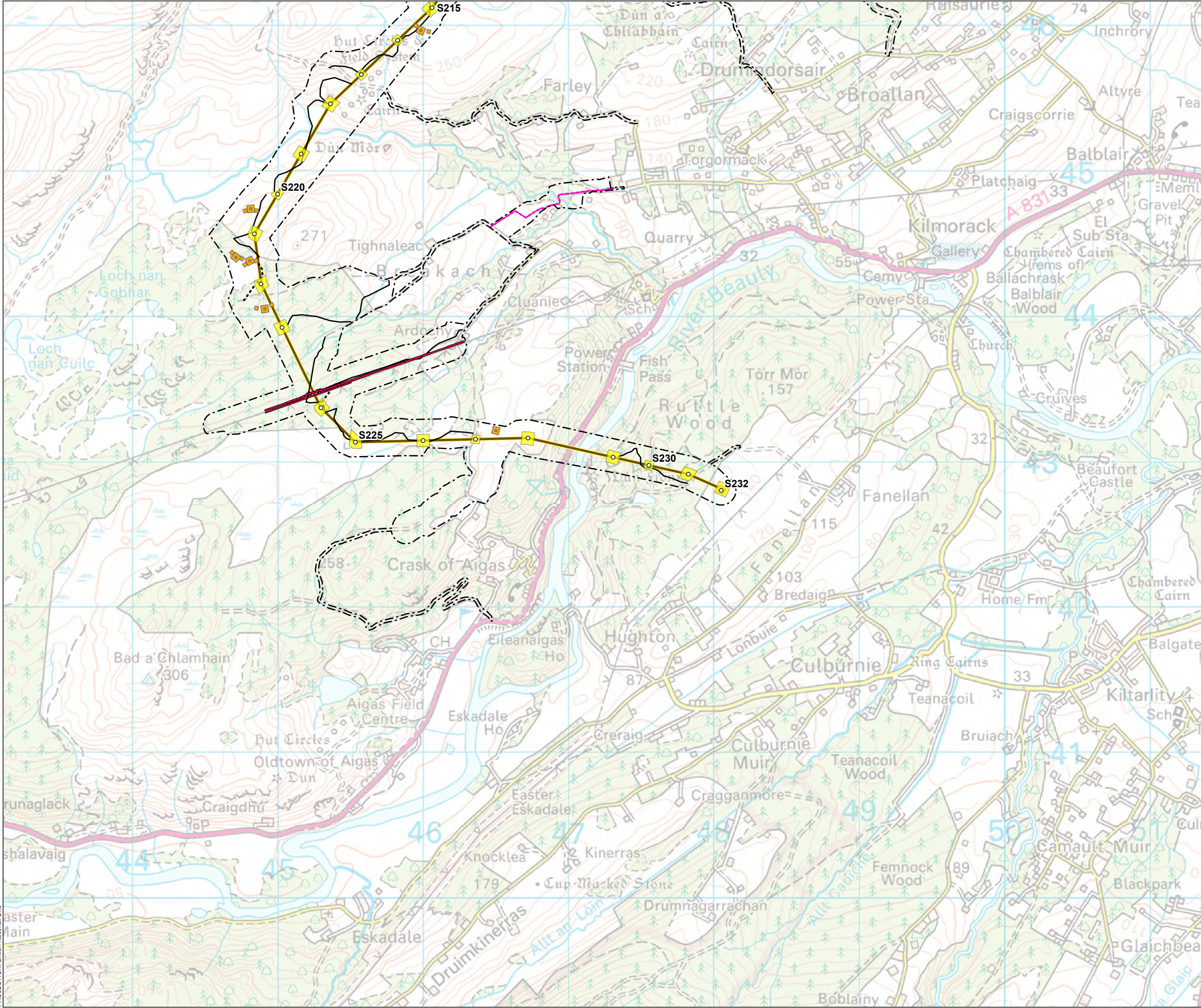


- Tower Location
- Alignment Section E
- Special Arrangement
- - - Limit of Deviation
- Temporary Tower Compound Area
- Equipotential Zone (EPZ) (Pulling Position)
- Temporary Access Track - Cut/Fill
- Temporary Access Track - Floating
- Permanent Access Track - Cut/Fill
- Permanent Access Track - Floating
- Alignment Section Break

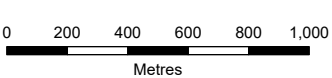
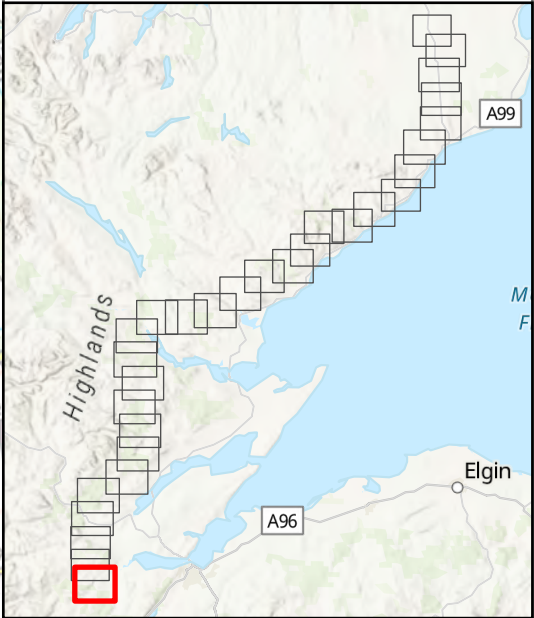


SCALE: See Scale Bar	VERSION: A02
SIZE: A3	DRAWN: BW
PROJECT: 0720281	CHECKED: CM
DATE: 06/08/2025	APPROVED: KG

Figure 1 - 29
Spittal - Loch Buidhe - Beauly 400 kV OHL
Connection
Peat Landslide Hazard and Risk Assessment
Site Layout



- Tower Location
- Alignment Section E
- Special Arrangement
- - - Limit of Deviation
- Temporary Tower Compound Area
- Equipotential Zone (EPZ) (Pulling Position)
- Temporary Access Track - Cut/Fill
- Temporary Access Track - Floating
- Permanent Access Track - Cut/Fill
- Permanent Access Track - Floating
- Alignment Section Break

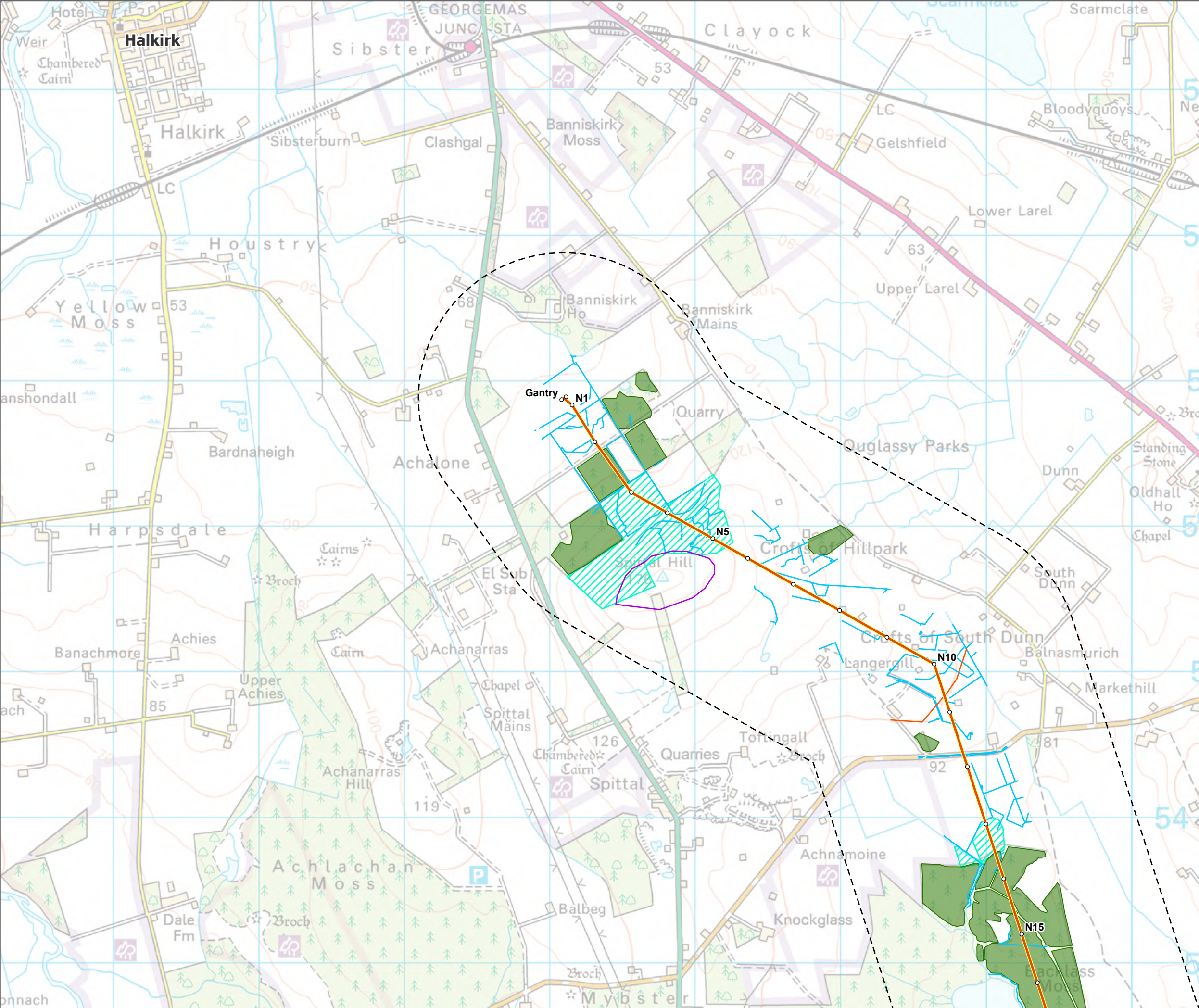


SCALE: See Scale Bar
SIZE: A3
PROJECT: 0720281
DATE: 06/08/2025

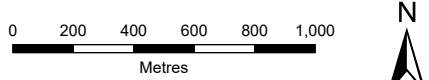
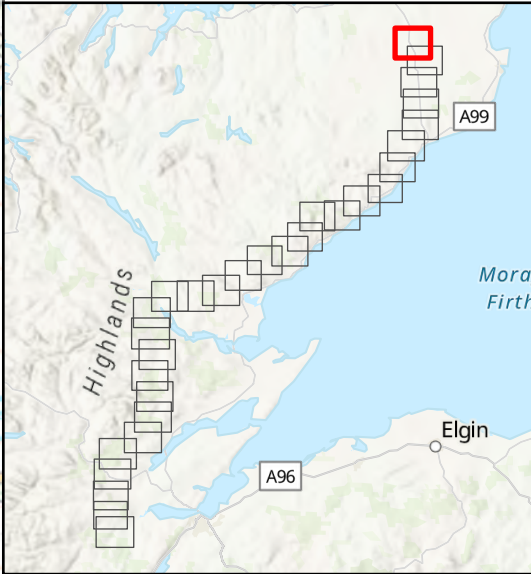
VERSION: A02
DRAWN: BW
CHECKED: CM
APPROVED: KG

Figure 1 - 30
Spittal - Loch Buidhe - Beaulie 400 kV OHL
Connection
Peat Landslide Hazard and Risk Assessment
Site Layout





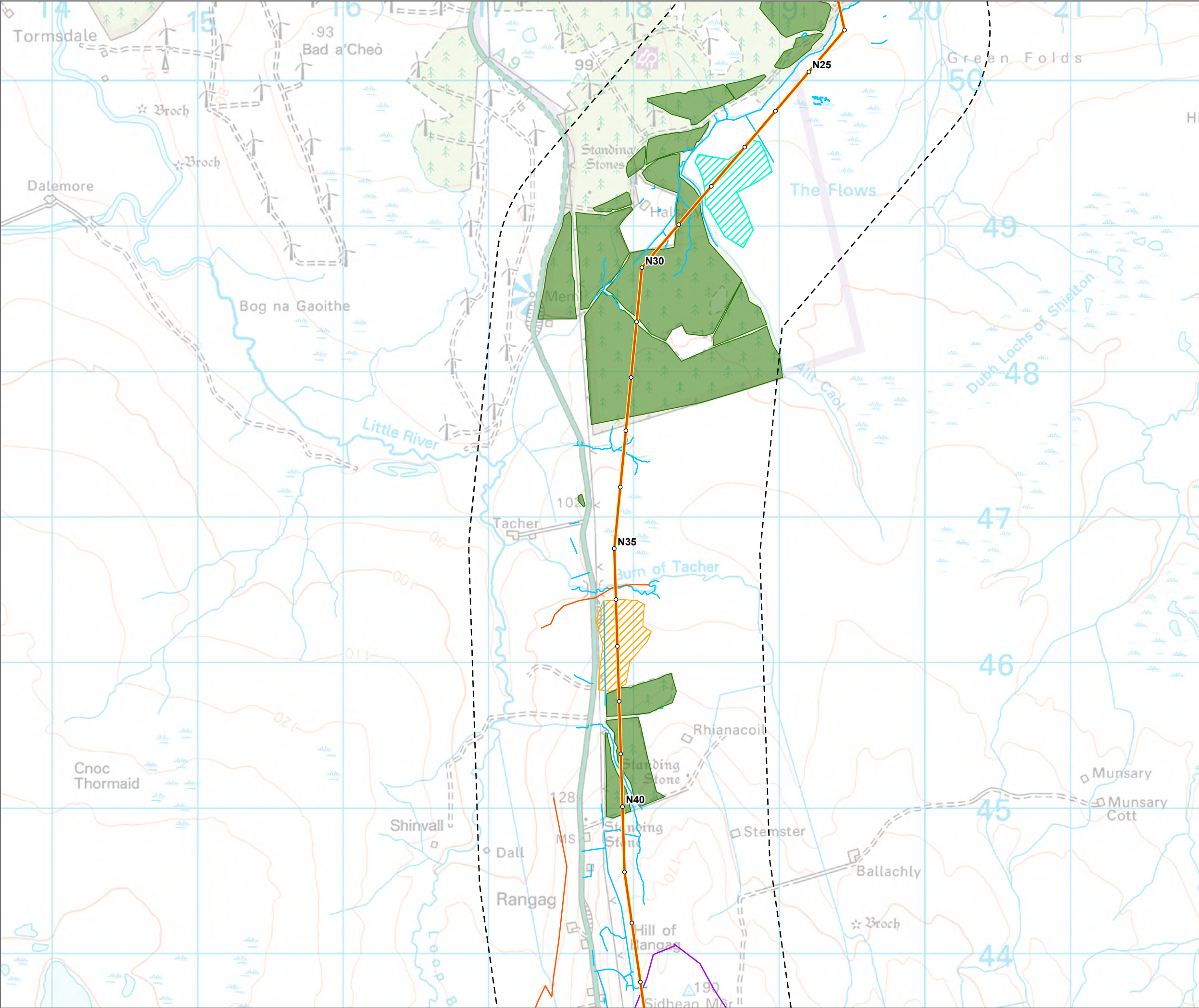
- Tower Location
- Alignment Section A
- Alignment Section Break
- Study Area (1 km Buffer)
- Watercourses and Drains
- Top of Slope
- Bottom of Slope
- ▨ Past Instability
- ▨ Eroded Peat Feature
- ▨ Artificial Drainage
- ▨ Peat Cutting
- ▨ Forestry



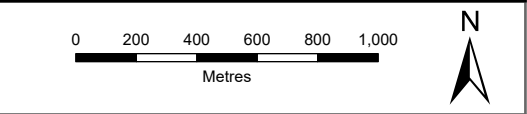
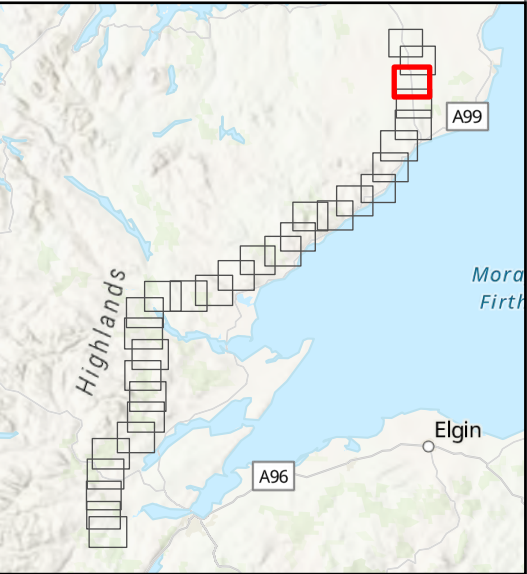
SCALE: See Scale Bar	VERSION: A02
SIZE: A3	DRAWN: BW
PROJECT: 0720281	CHECKED: CM
DATE: 06/08/2025	APPROVED: KG

Figure 2 - 1
Spittal - Loch Buidhe - Beaulieu 400 kV OHL
Connection
Peat Landslide Hazard Risk Assessment
Geomorphological Map



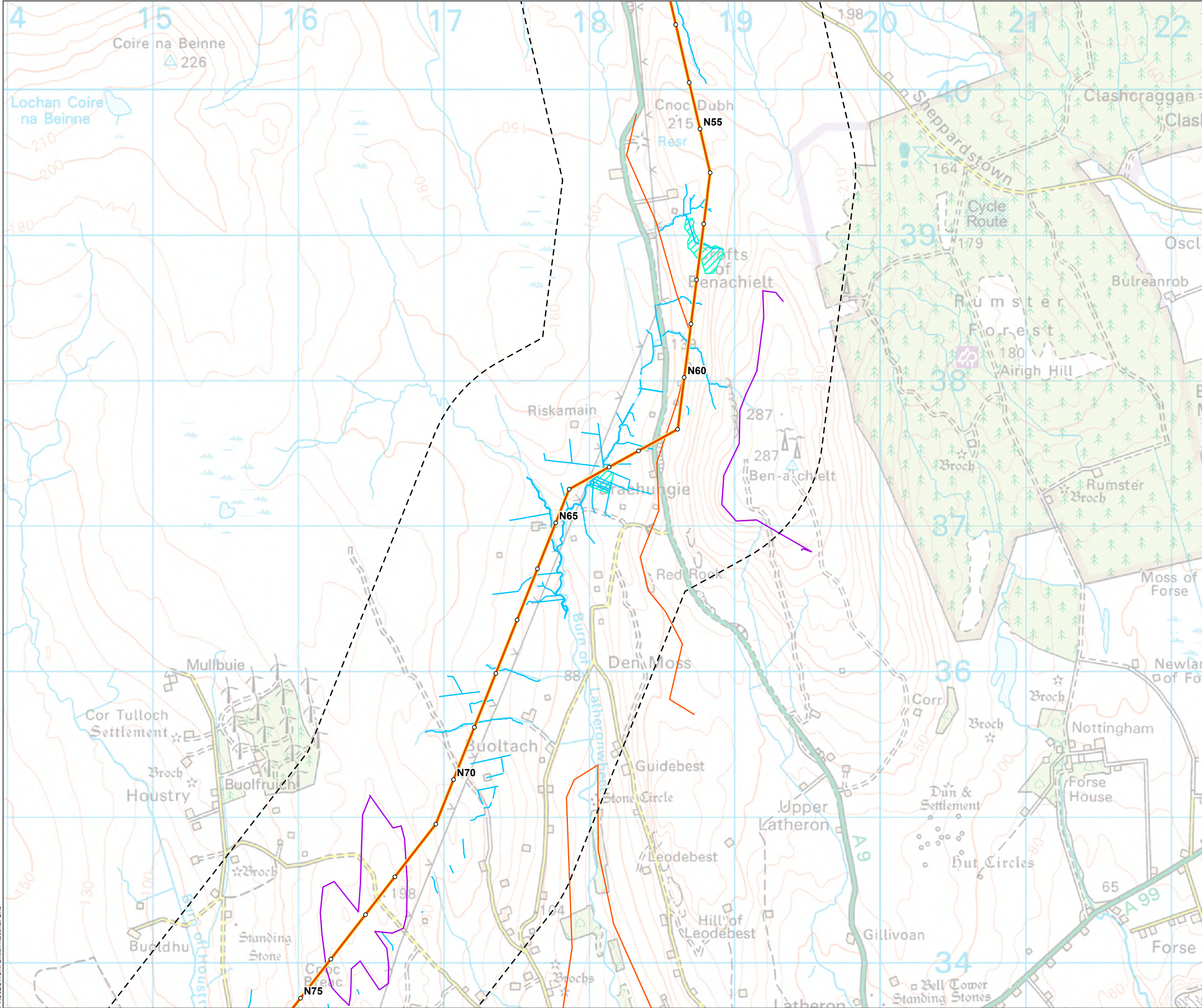


- Tower Location
- Alignment Section A
- Alignment Section Break
- - - Study Area (1 km Buffer)
- Watercourses and Drains
- Top of Slope
- Bottom of Slope
- ▨ Past Instability
- ▨ Eroded Peat Feature
- ▨ Artificial Drainage
- ▨ Peat Cutting
- Forestry

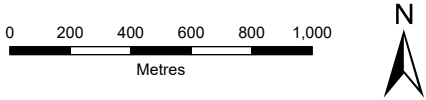
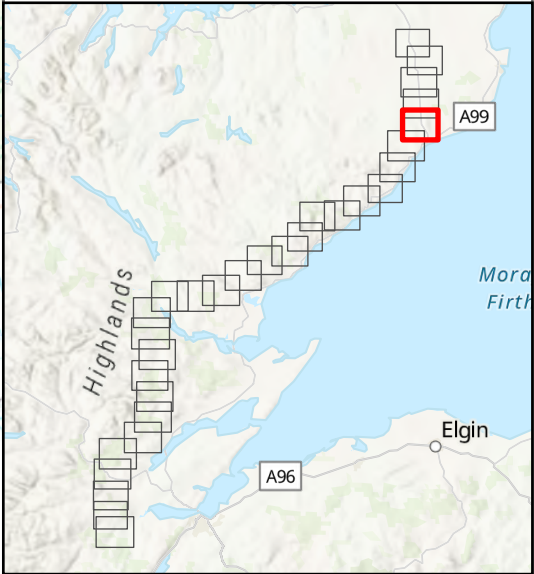


SCALE: See Scale Bar	VERSION: A02
SIZE: A3	DRAWN: BW
PROJECT: 0720281	CHECKED: CM
DATE: 06/08/2025	APPROVED: KG

Figure 2 - 3
Spittal - Loch Buidhe - Beauly 400 kV OHL
Connection
Peat Landslide Hazard Risk Assessment
Geomorphological Map



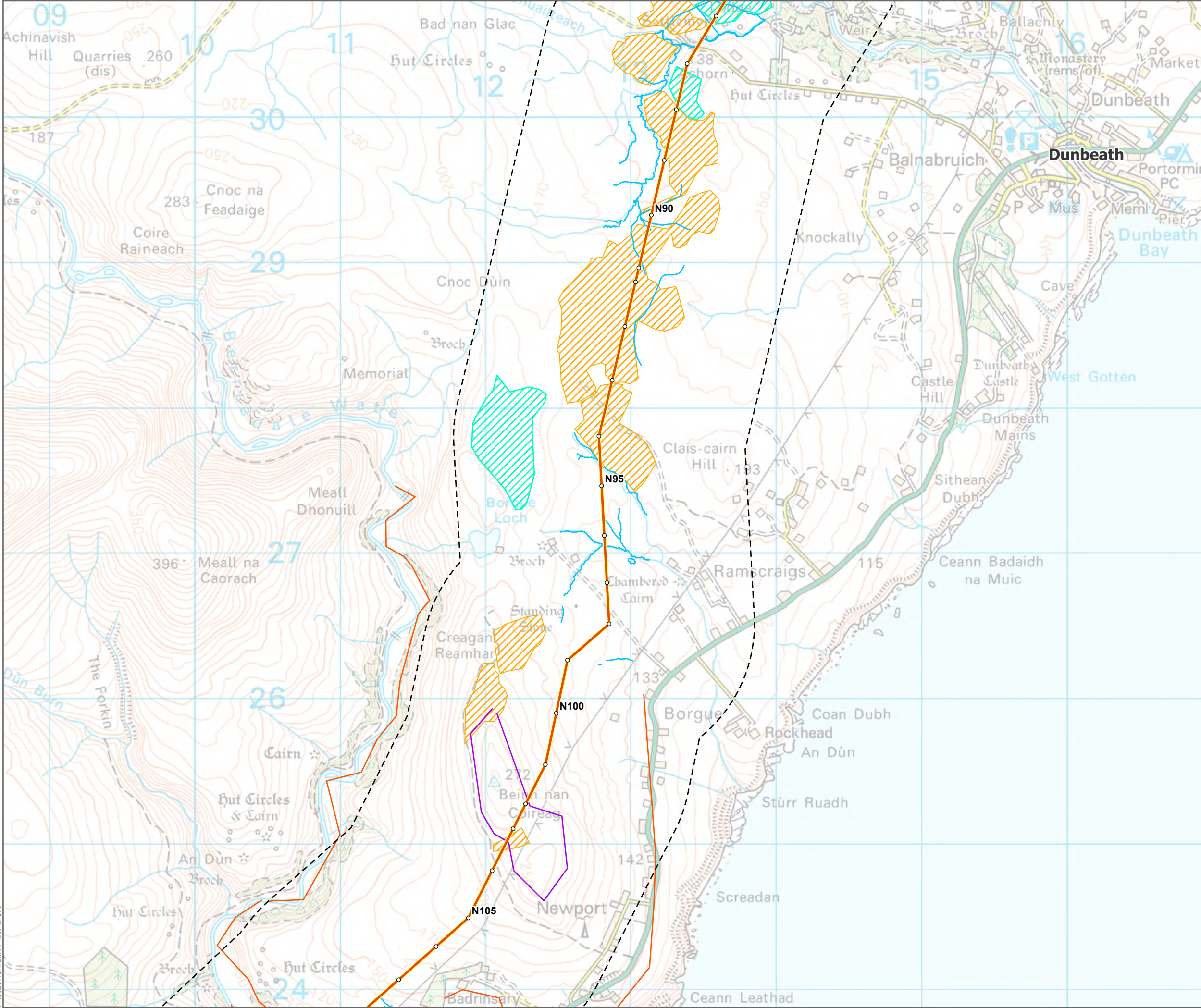
- Tower Location
- Alignment Section A
- ~ Alignment Section Break
- - - Study Area (1 km Buffer)
- Watercourses and Drains
- Top of Slope
- Bottom of Slope
- ▨ Past Instability
- ▨ Eroded Peat Feature
- ▨ Artificial Drainage
- ▨ Peat Cutting
- ▨ Forestry



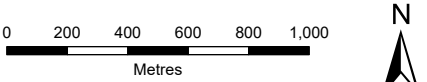
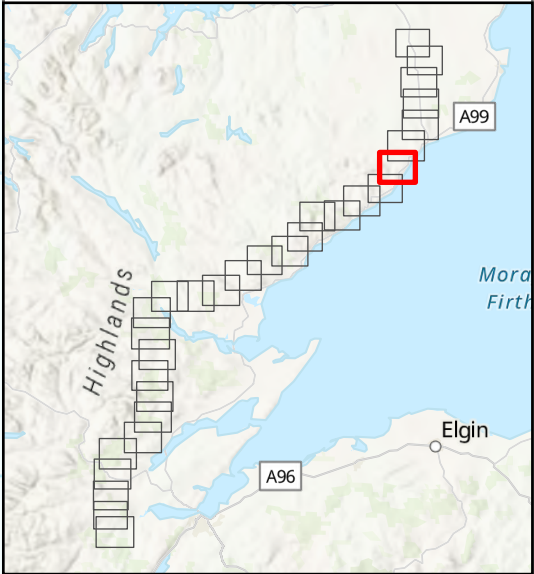
SCALE: See Scale Bar	VERSION: A02
SIZE: A3	DRAWN: BW
PROJECT: 0720281	CHECKED: CM
DATE: 06/08/2025	APPROVED: KG

Figure 2 - 5
Spittal - Loch Buidhe - Beaulieu 400 kV OHL
Connection
Peat Landslide Hazard Risk Assessment
Geomorphological Map





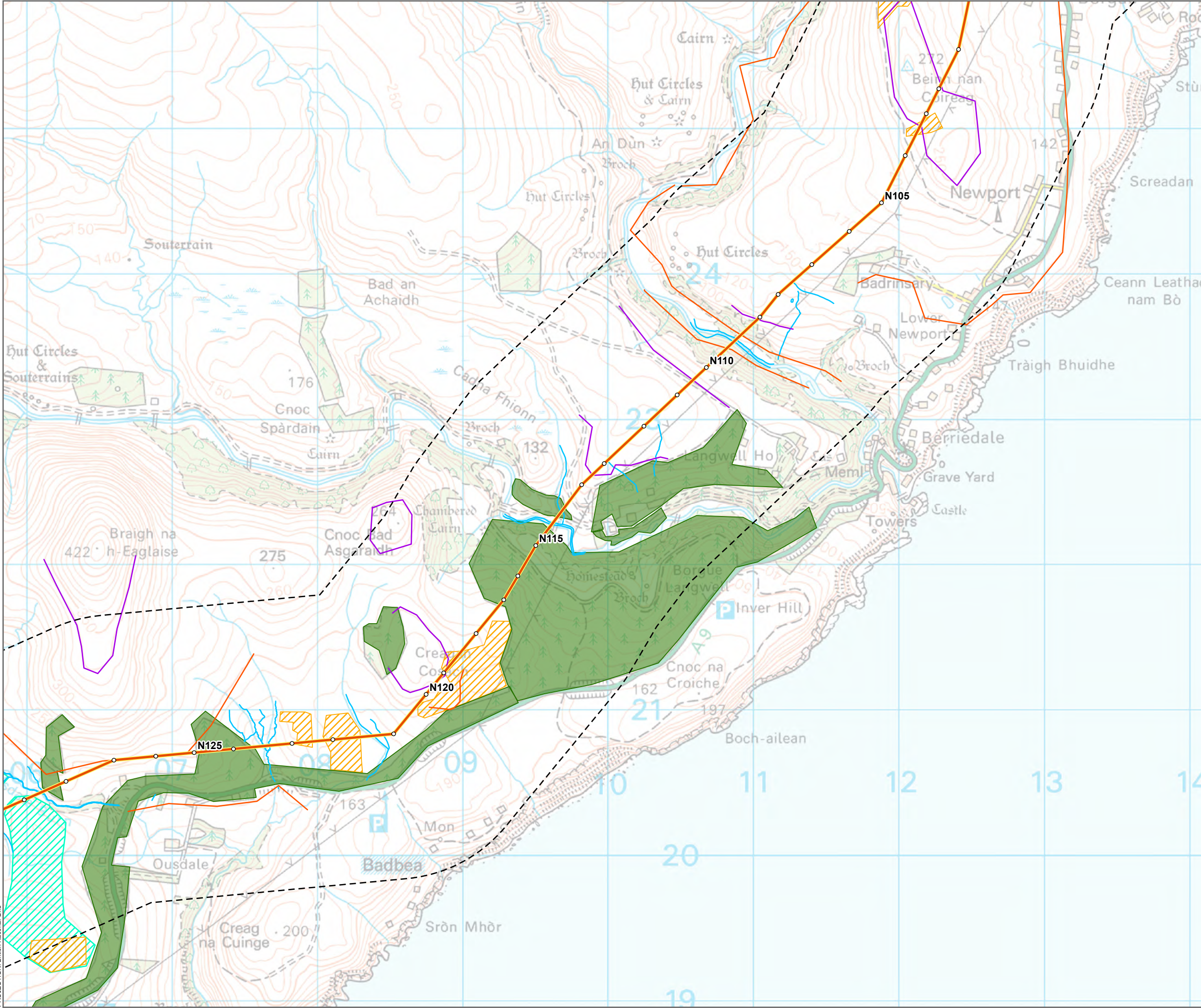
- Tower Location
- Alignment Section A
- Alignment Section Break
- - - Study Area (1 km Buffer)
- Watercourses and Drains
- Top of Slope
- Bottom of Slope
- ▨ Past Instability
- ▨ Eroded Peat Feature
- ▨ Artificial Drainage
- ▨ Peat Cutting
- ▨ Forestry



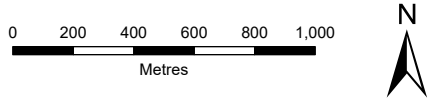
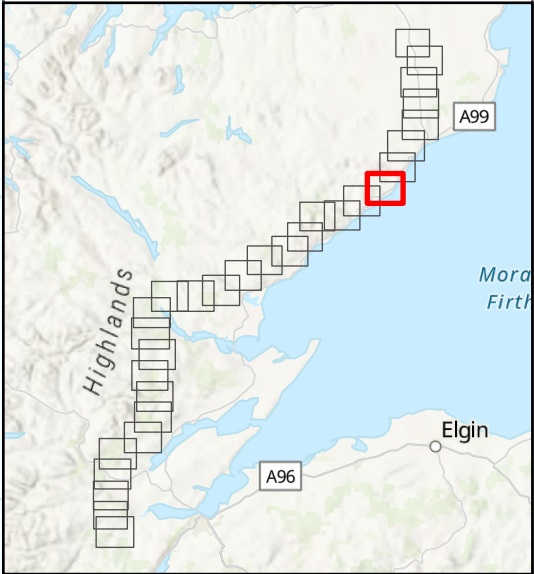
SCALE: See Scale Bar	VERSION: A02
SIZE: A3	DRAWN: BW
PROJECT: 0720281	CHECKED: CM
DATE: 06/08/2025	APPROVED: KG

Figure 2 - 7
Spittal - Loch Buidhe - Beaulieu 400 kV OHL
Connection
Peat Landslide Hazard Risk Assessment
Geomorphological Map





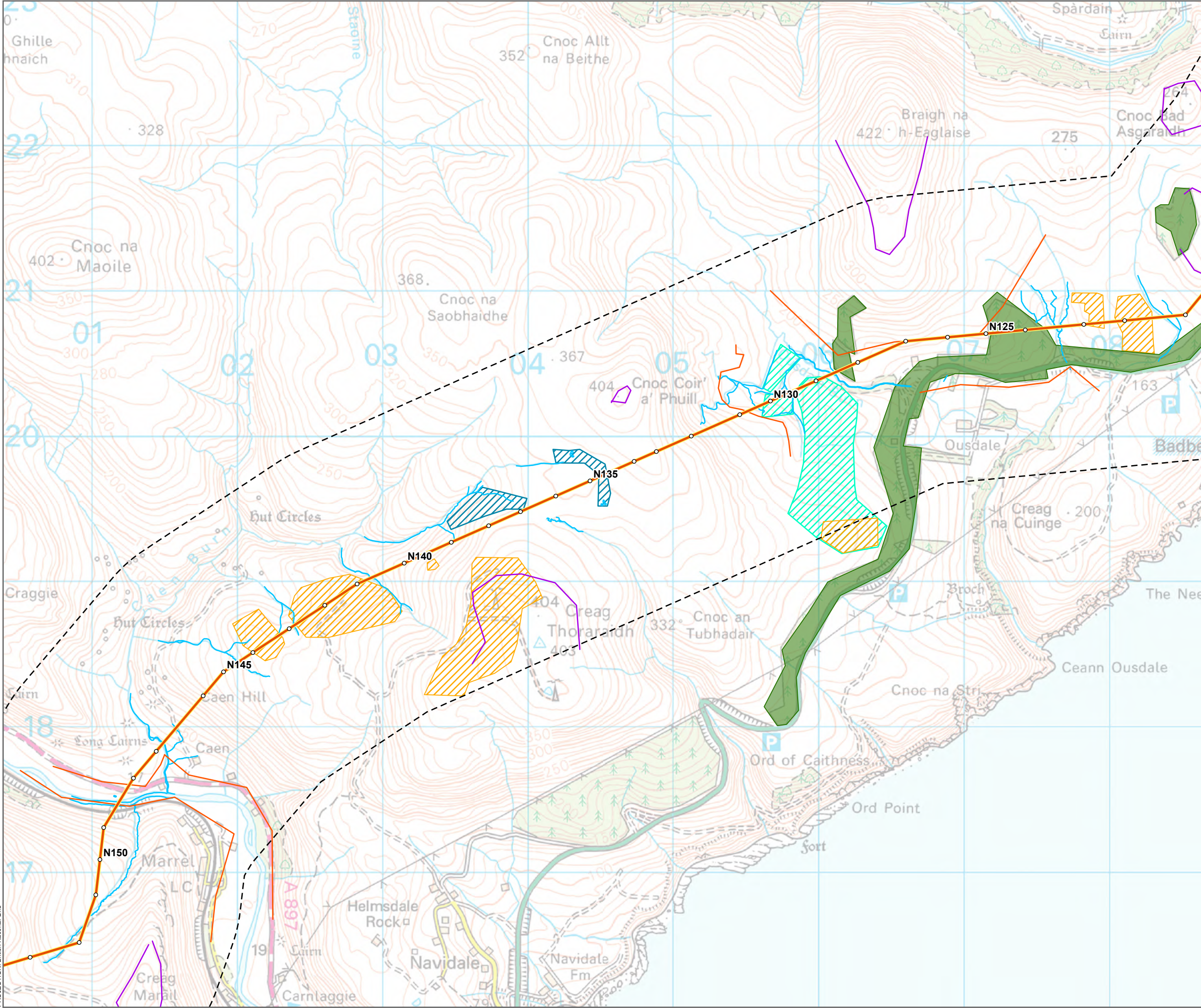
- Tower Location
- Alignment Section A
- Alignment Section Break
- - - Study Area (1 km Buffer)
- Watercourses and Drains
- Top of Slope
- Bottom of Slope
- ▨ Past Instability
- ▨ Eroded Peat Feature
- ▨ Artificial Drainage
- ▨ Peat Cutting
- ▨ Forestry



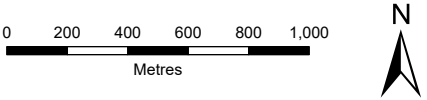
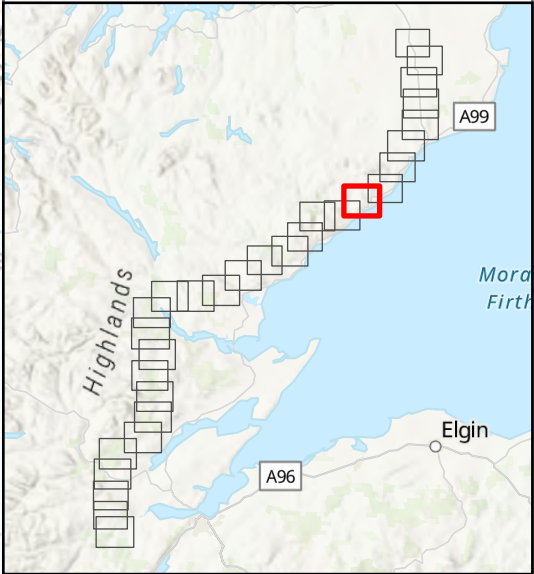
SCALE: See Scale Bar	VERSION: A02
SIZE: A3	DRAWN: BW
PROJECT: 0720281	CHECKED: CM
DATE: 06/08/2025	APPROVED: KG

Figure 2 - 8
Spittal - Loch Buidhe - Beaulieu 400 kV OHL
Connection
Peat Landslide Hazard Risk Assessment
Geomorphological Map





- Tower Location
- Alignment Section A
- - Alignment Section Break
- - - Study Area (1 km Buffer)
- Watercourses and Drains
- Top of Slope
- Bottom of Slope
- ▨ Past Instability
- ▨ Eroded Peat Feature
- ▨ Artificial Drainage
- ▨ Peat Cutting
- Forestry

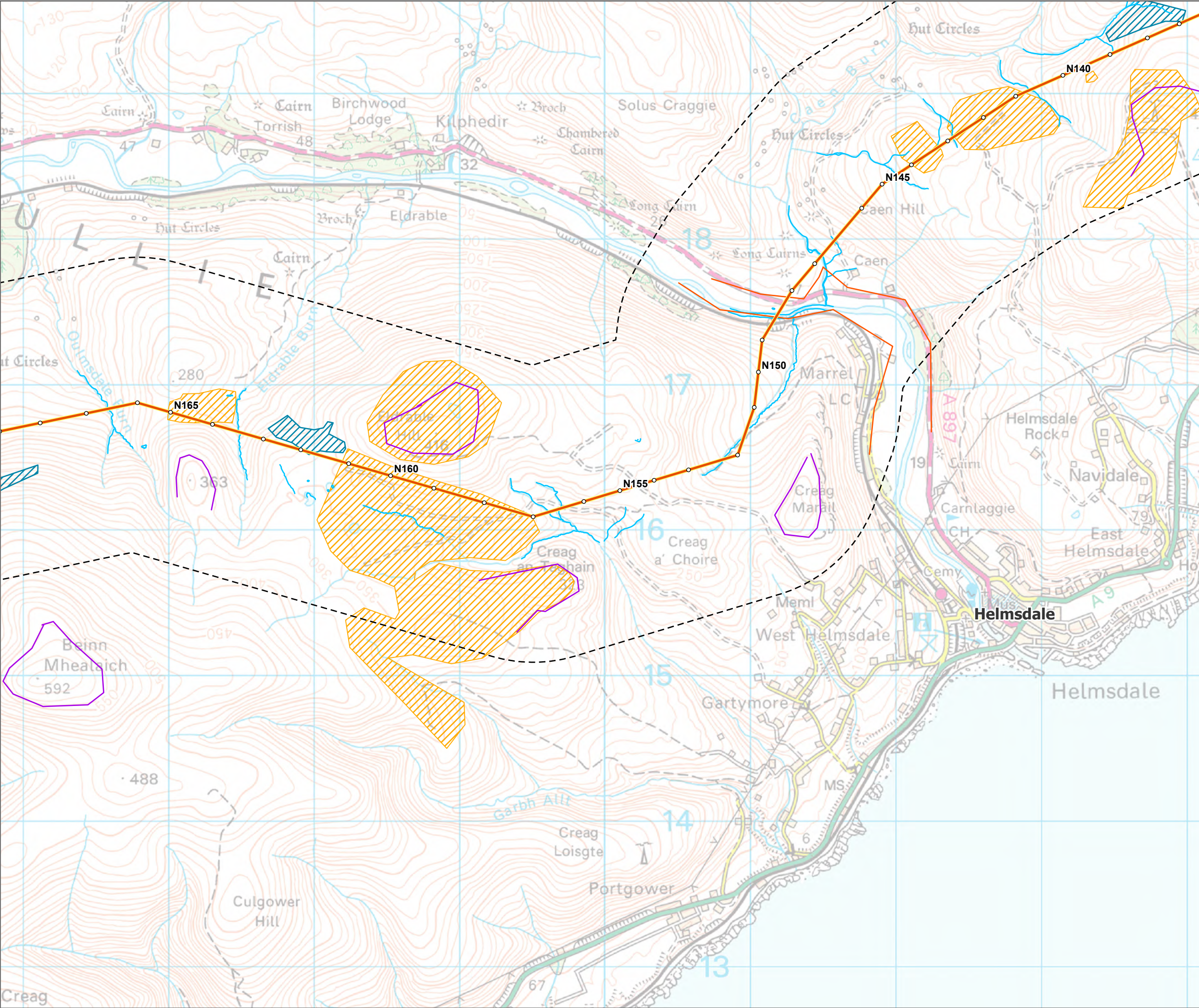


SCALE: See Scale Bar	VERSION: A02
SIZE: A3	DRAWN: BW
PROJECT: 0720281	CHECKED: CM
DATE: 06/08/2025	APPROVED: KG

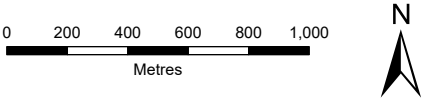
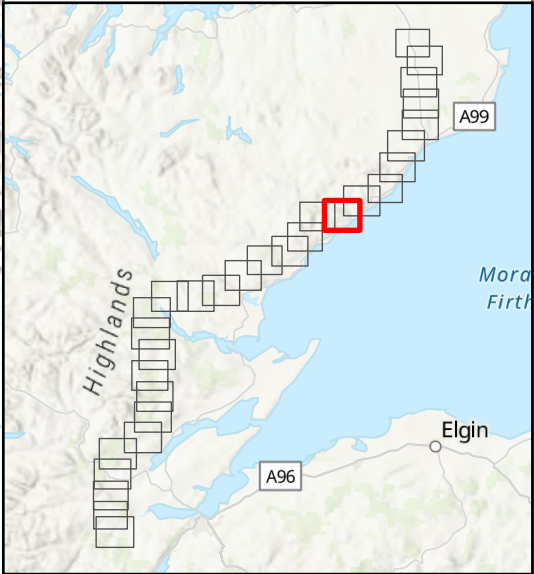
Figure 2 - 9
Spittal - Loch Buidhe - Beaulieu 400 kV OHL
Connection
Peat Landslide Hazard Risk Assessment
Geomorphological Map



PROJECTION: British National Grid



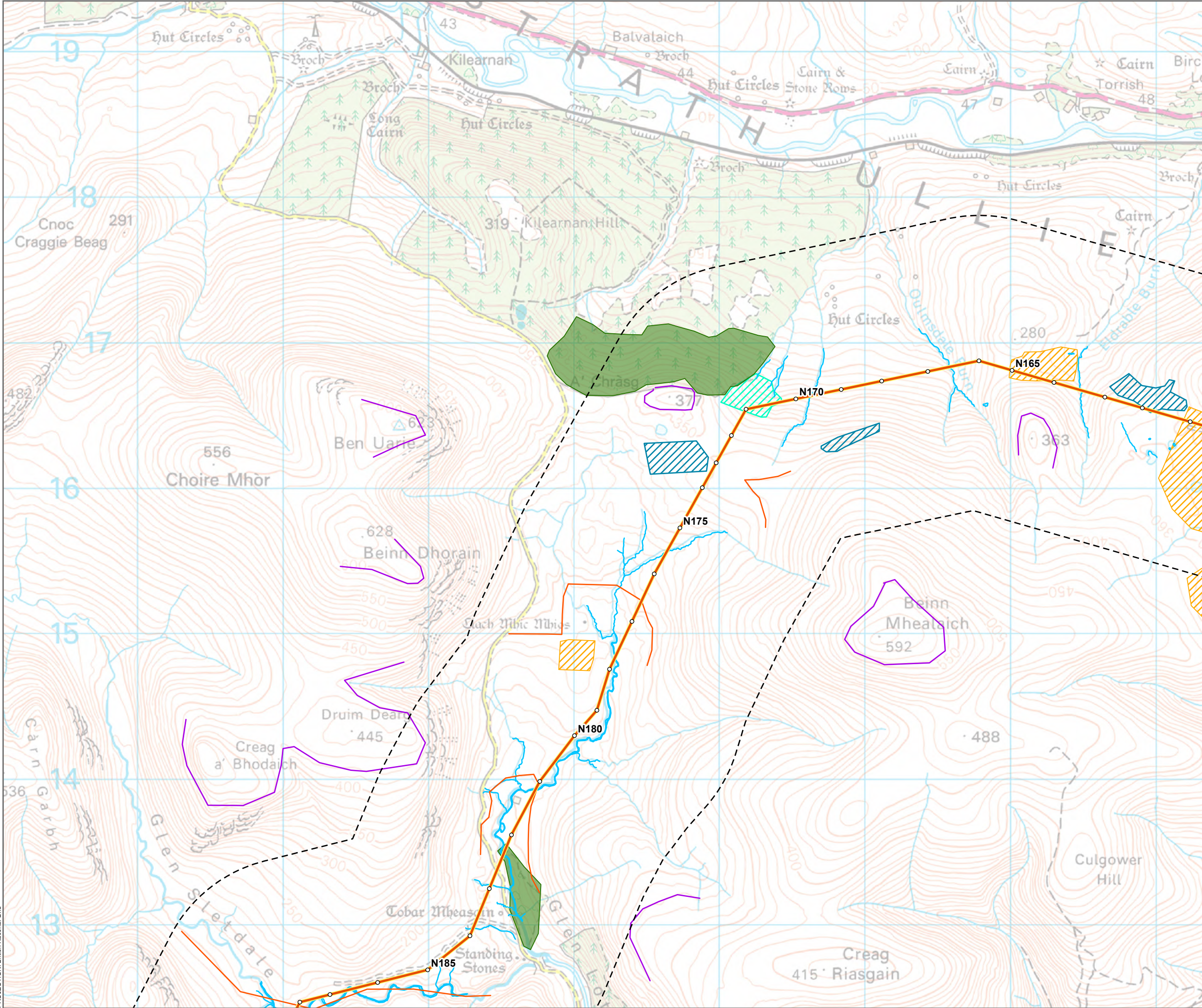
- Tower Location
- Alignment Section A
- Alignment Section Break
- - - Study Area (1 km Buffer)
- Watercourses and Drains
- Top of Slope
- Bottom of Slope
- Past Instability
- Eroded Peat Feature
- Artificial Drainage
- Peat Cutting
- Forestry



SCALE: See Scale Bar	VERSION: A02
SIZE: A3	DRAWN: BW
PROJECT: 0720281	CHECKED: CM
DATE: 06/08/2025	APPROVED: KG

Figure 2 - 10
Spittal - Loch Buidhe - Beauly 400 kV OHL
Connection
Peat Landslide Hazard Risk Assessment
Geomorphological Map





Tower Location

Alignment Section A

Alignment Section Break

Study Area (1 km Buffer)

Watercourses and Drains

Top of Slope

Bottom of Slope

Past Instability

Eroded Peat Feature

Artificial Drainage

Peat Cutting

Forestry

0

200

400

600

800

1,000

Metres

N

SCALE: See Scale Bar

VERSION: A02

SIZE: A3

DRAWN: BW

PROJECT: 0720281

CHECKED: CM

DATE: 06/08/2025

APPROVED: KG

Figure 2 - 11

Spittal - Loch Buidhe - Beaulieu 400 kV OHL Connection

Peat Landslide Hazard Risk Assessment

Geomorphological Map

ERM

Scottish & Southern

Electricity Networks

TRANSMISSION

PROJECTION: British National Grid

© Landmark Information Group Limited and/or its Data Suppliers (All rights reserved 2010); Sources: Esri, TomTom, Garmin, FAO, NOAA, USGS, © OpenStreetMap contributors, and the GIS User Community.

Path: \\uksprdgis011\Data\ArcGIS\Projects\0652629 - SSE Beaulieu to Loch Buidhe\Workspace\Engineering\SLBB Engineering v1.aprx - 0652629 - Figure 11.1.2 - Geomorphological Map - A01