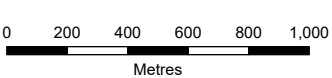
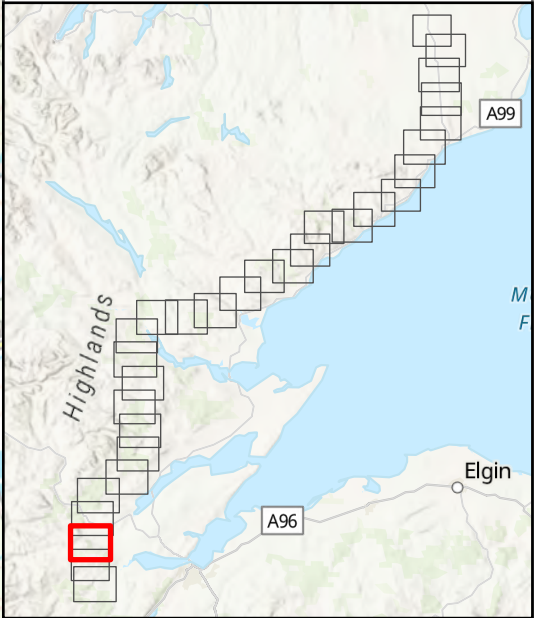


- Tower Location
- Alignment Section E
- Special Arrangement
- - - Limit of Deviation
- Temporary Tower Compound Area
- Equipotential Zone (EPZ) (Pulling Position)
- Temporary Access Track - Cut/Fill
- Temporary Access Track - Floating
- Temporary Access Track - Trackway Panel
- Permanent Access Track - Cut/Fill
- Permanent Access Track - Floating
- Alignment Section Break

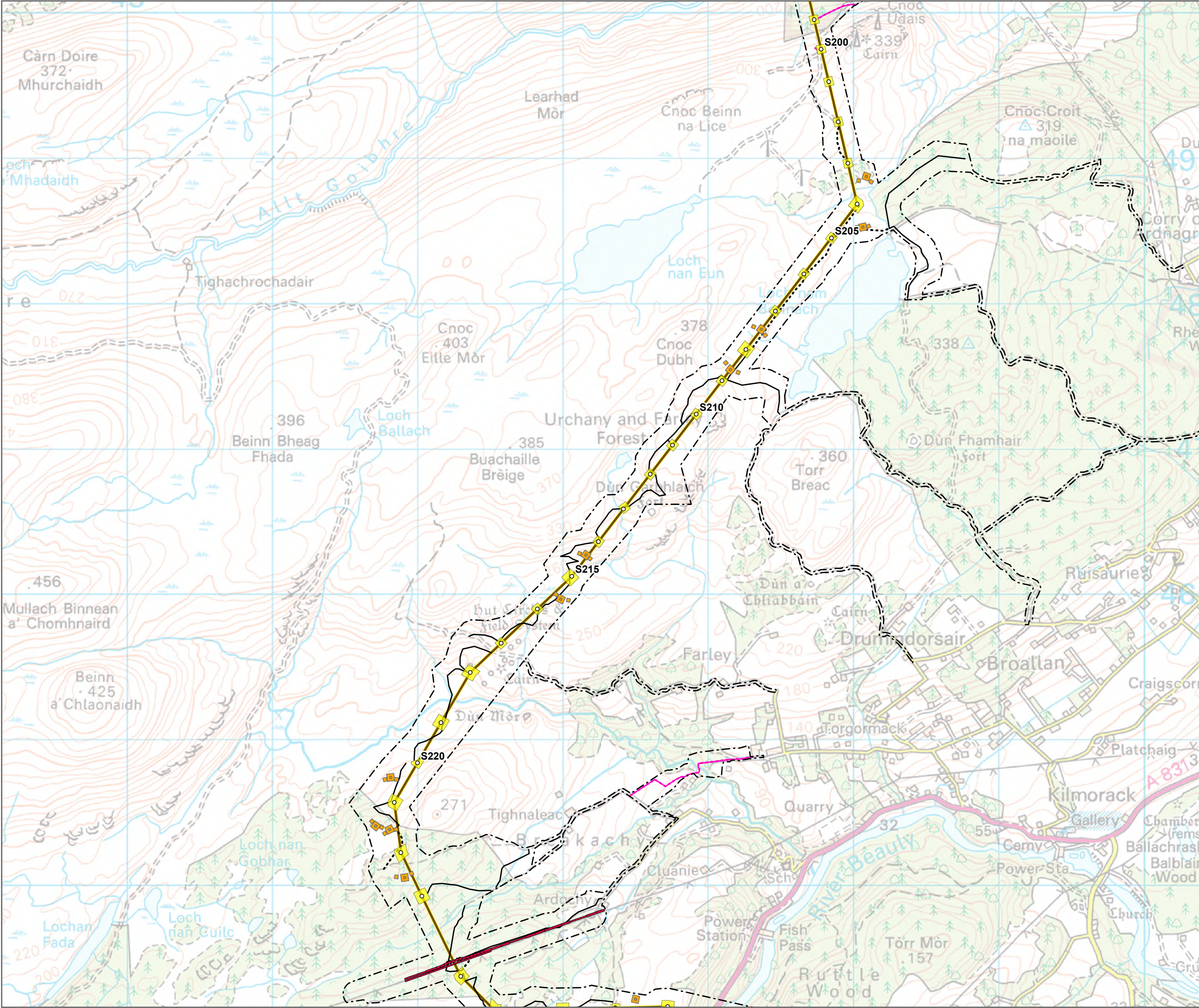


SCALE: See Scale Bar
SIZE: A3
PROJECT: 0720281
DATE: 07/08/2025

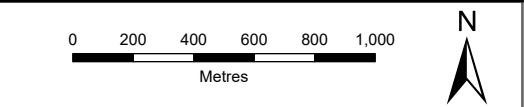
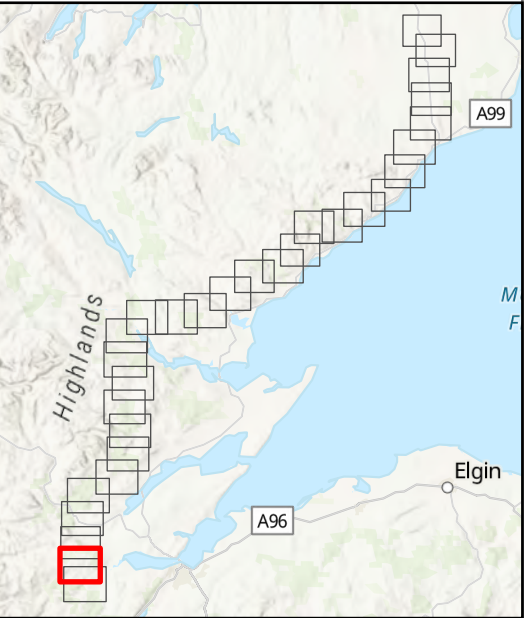
VERSION: A02
DRAWN: BW
CHECKED: TA
APPROVED: KG

Figure 1 - 28
Spittal - Loch Buidhe - Beaulieu 400 kV OHL
Connection
Peat Management Plan
Site Layout





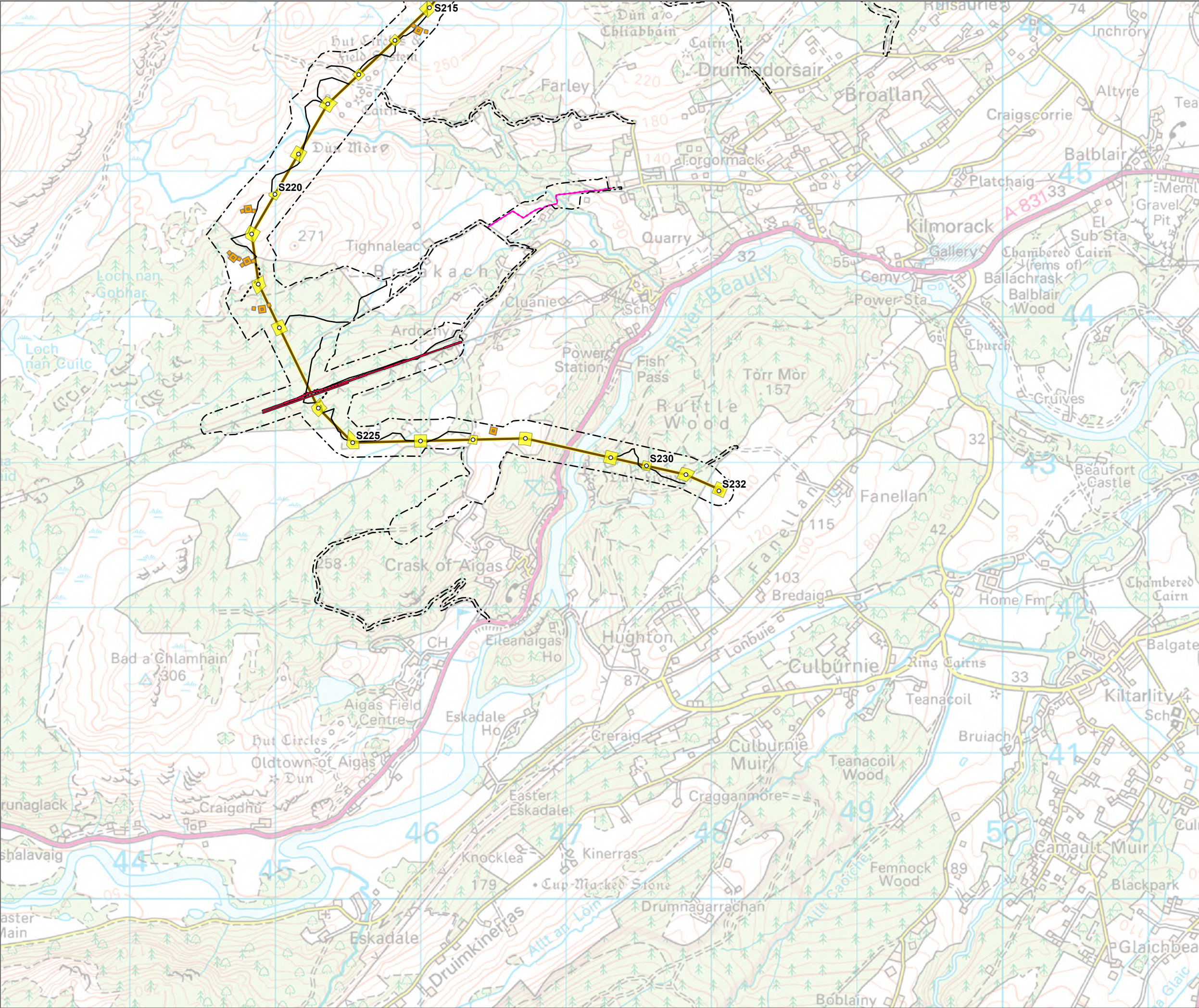
- Tower Location
- Alignment Section E
- Special Arrangement
- - - Limit of Deviation
- Temporary Tower Compound Area
- Equipotential Zone (EPZ) (Pulling Position)
- Temporary Access Track - Cut/Fill
- Temporary Access Track - Floating
- Permanent Access Track - Cut/Fill
- Permanent Access Track - Floating
- Alignment Section Break



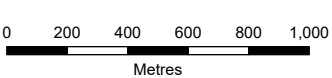
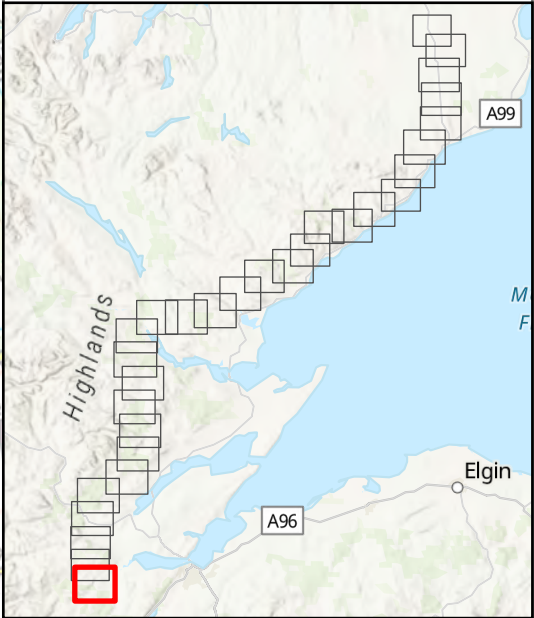
SCALE: See Scale Bar	VERSION: A02
SIZE: A3	DRAWN: BW
PROJECT: 0720281	CHECKED: TA
DATE: 07/08/2025	APPROVED: KG

Figure 1 - 29
Spittal - Loch Buidhe - Beaulieu 400 kV OHL
Connection
Peat Management Plan
Site Layout





- Tower Location
- Alignment Section E
- Special Arrangement
- - - Limit of Deviation
- Temporary Tower Compound Area
- Equipotential Zone (EPZ) (Pulling Position)
- Temporary Access Track - Cut/Fill
- Temporary Access Track - Floating
- Permanent Access Track - Cut/Fill
- Permanent Access Track - Floating
- Alignment Section Break

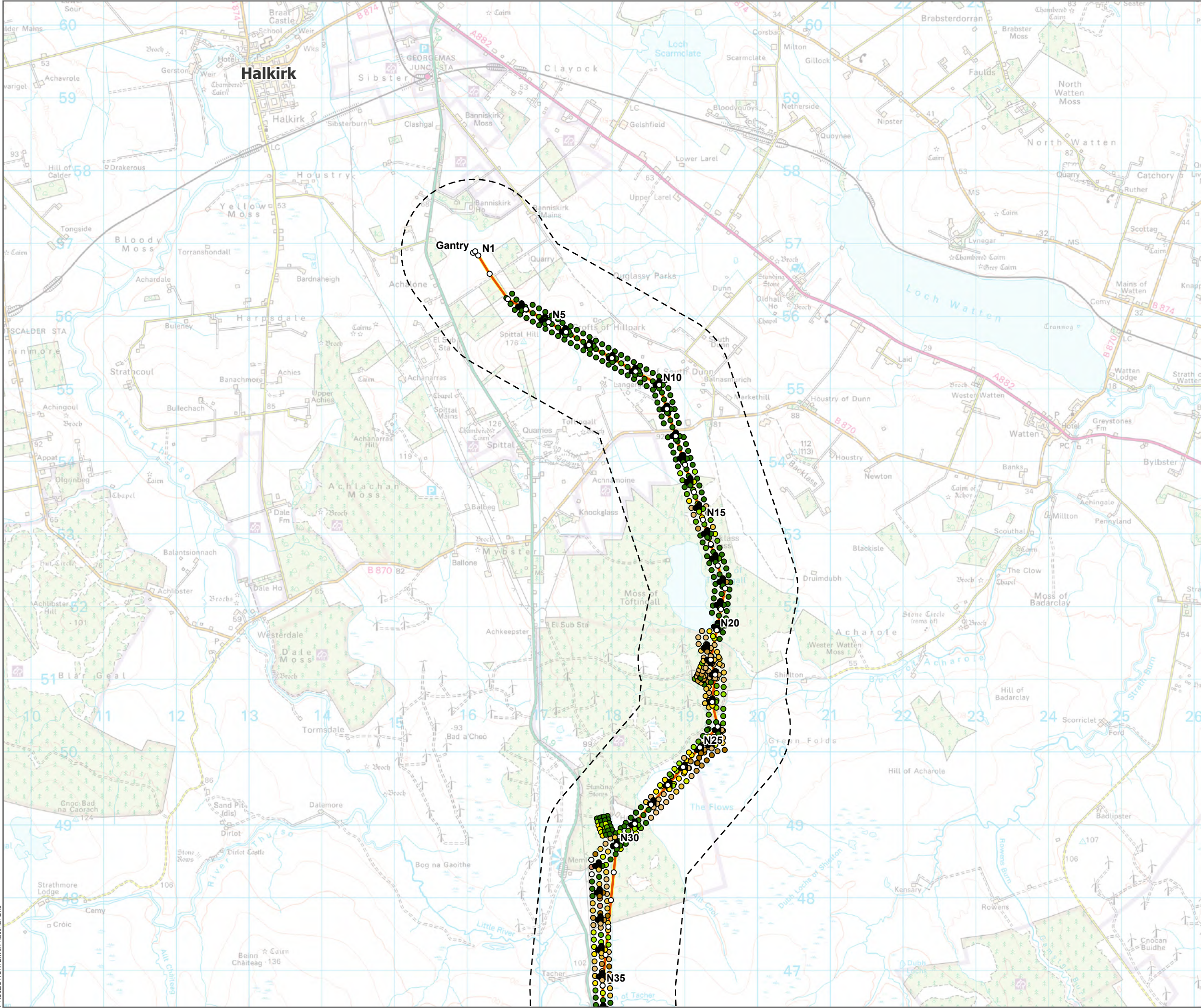


SCALE: See Scale Bar
SIZE: A3
PROJECT: 0720281
DATE: 07/08/2025

VERSION: A02
DRAWN: BW
CHECKED: TA
APPROVED: KG

Figure 1 - 30
Spittal - Loch Buidhe - Beaulie 400 kV OHL
Connection
Peat Management Plan
Site Layout





Tower Location

Alignment Section A

Alignment Section Break

Study Area (1 km Buffer)

Recorded Peat Depth (m)

0.01 - 0.50

0.51 - 1.00

1.01 - 1.50

1.51 - 2.00

2.01 - 2.50

2.51 - 3.00

3.01 - 4.00

4.01 - 5.00

5.01 - 6.00

6.01 - 7.00

>7

0

500

1,000

1,500

2,000

2,500

Metres

N

Figure 2 - 1

Spittal - Loch Buidhe - Beaulieu 400kV OHL

Connection

Peat Management Plan

Recorded Peat Depths

ERM

Scottish & Southern

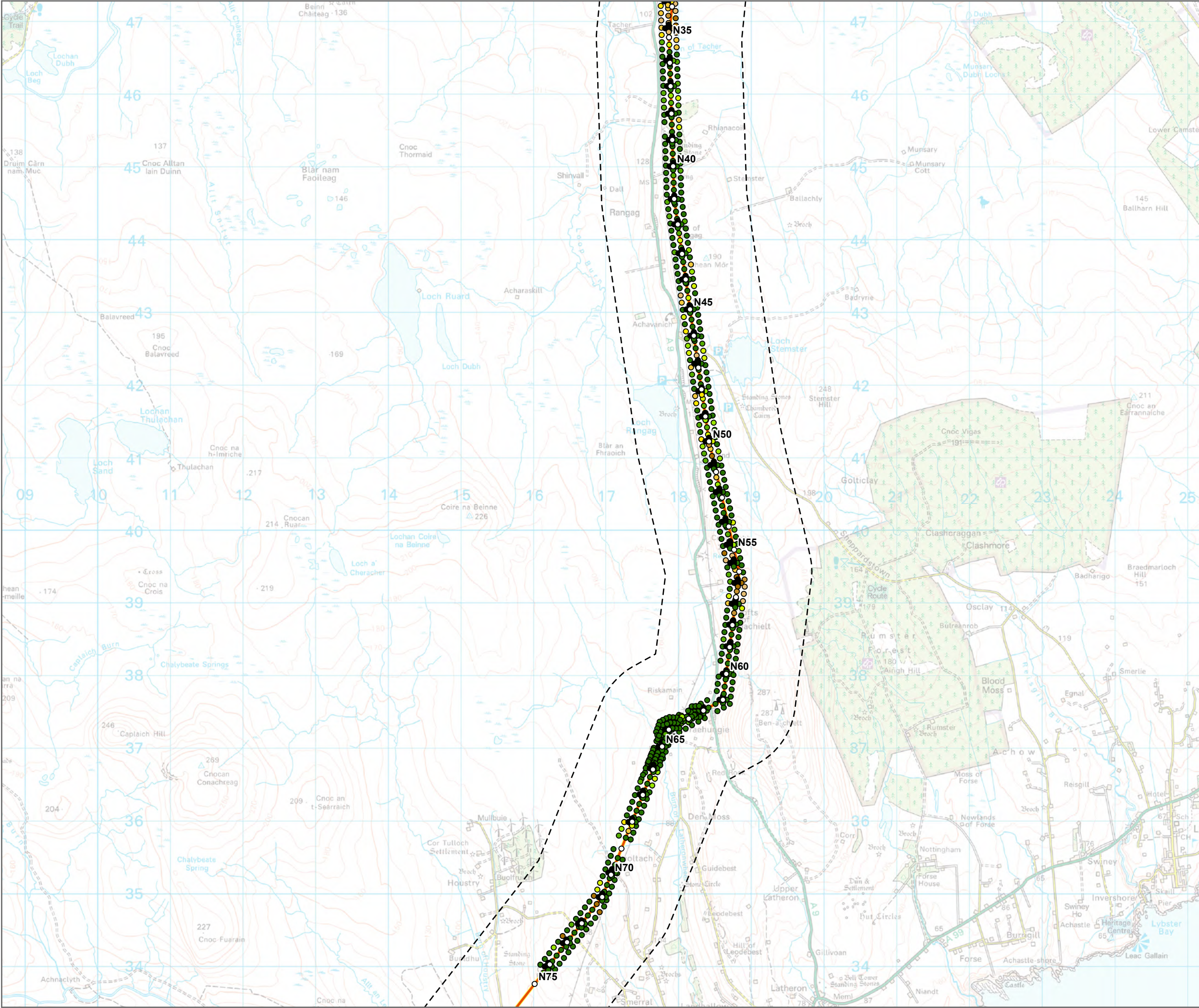
Electricity Networks

TRANSMISSION

PROJECTION: British National Grid

© Landmark Information Group Limited and/or its Data Suppliers (All rights reserved 2010); Sources: Esri, TomTom, Garmin, FAO, NOAA, USGS, © OpenStreetMap contributors, and the GIS User Community, Esri, USGS

Path: \uksprdgisf01\Data\Arcus\Projects\0652629 - SSE Beaulieu to Loch Buidhe\Workspace\Engineering\SLBB Engineering v1.aprx - 0652659 - Figure 11.2.2 - Recorded Peat Depths - A01



Tower Location

Alignment Section A

Alignment Section Break

Study Area (1 km Buffer)

Recorded Peat Depth (m)

0.01 - 0.50

0.51 - 1.00

1.01 - 1.50

1.51 - 2.00

2.01 - 2.50

2.51 - 3.00

3.01 - 4.00

4.01 - 5.00

5.01 - 6.00

6.01 - 7.00

>7

0

500

1,000

1,500

2,000

2,500

Metres

N

SCALE: See Scale Bar

SIZE: A3

PROJECT: 0720281

DATE: 07/08/2025

VERSION: A02

DRAWN: BW

CHECKED: CM

APPROVED: KG

Figure 2 - 2

Spittal - Loch Buidhe - Beaulay 400kV OHL Connection

Peat Management Plan

Recorded Peat Depths

ERM

Scottish & Southern

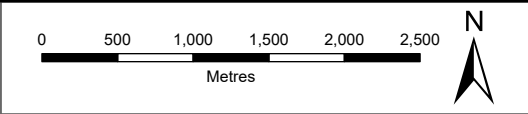
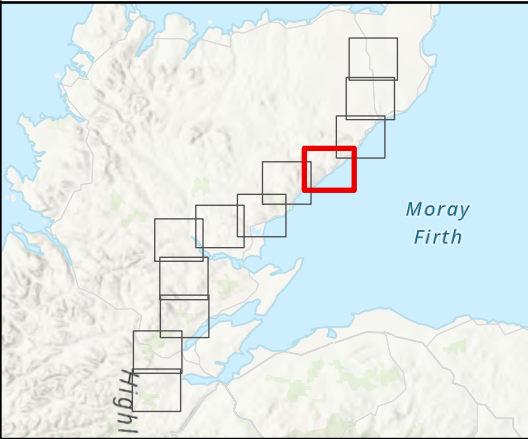
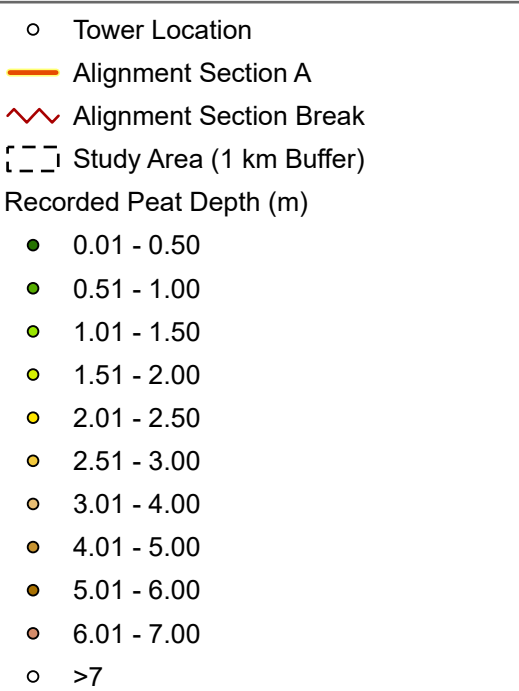
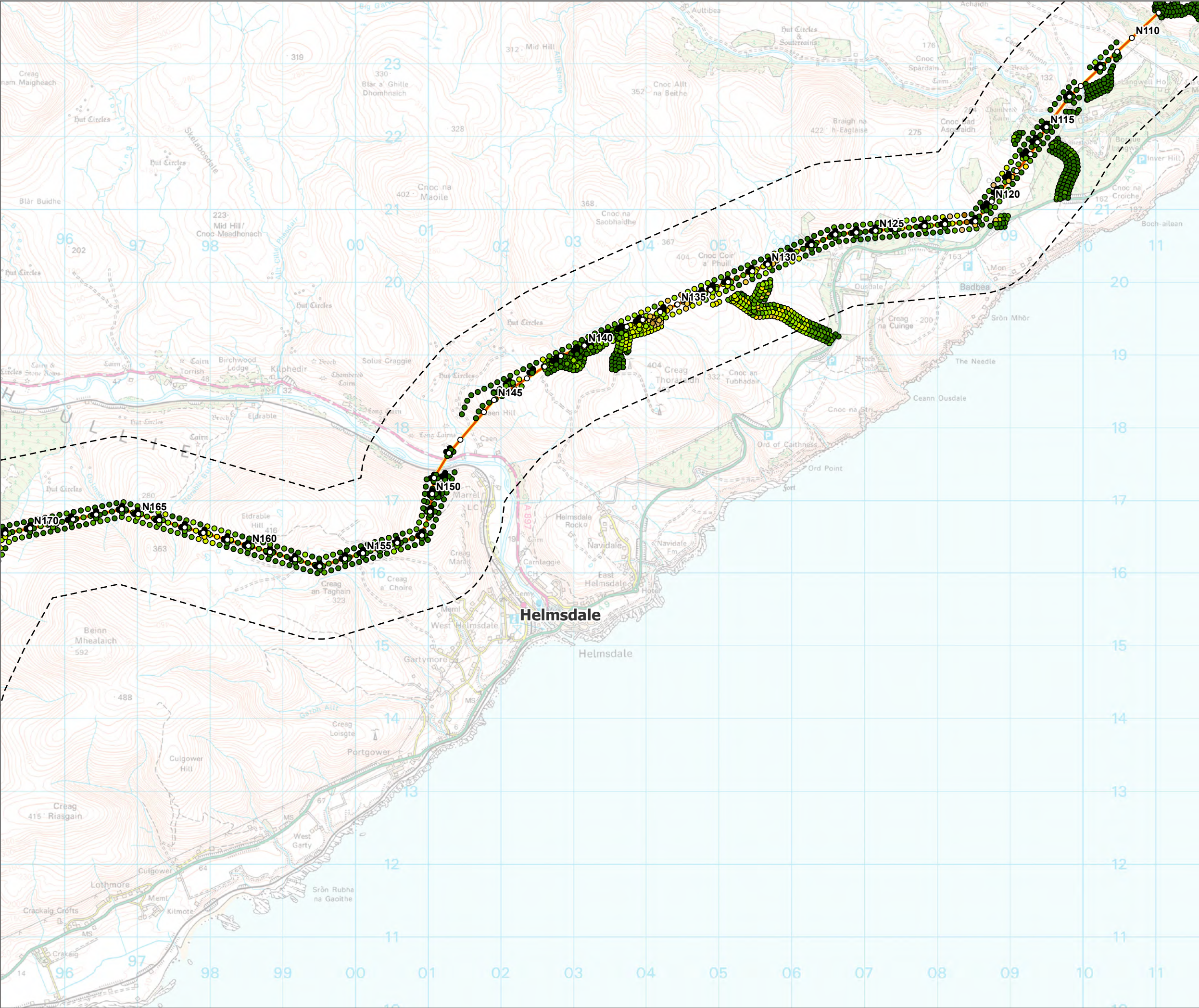
Electricity Networks

TRANSMISSION

PROJECTION: British National Grid

© Landmark Information Group Limited and/or its Data Suppliers (All rights reserved 2010); Sources: Esri, TomTom, Garmin, FAO, NOAA, USGS, © OpenStreetMap contributors, and the GIS User Community, Esri, USGS

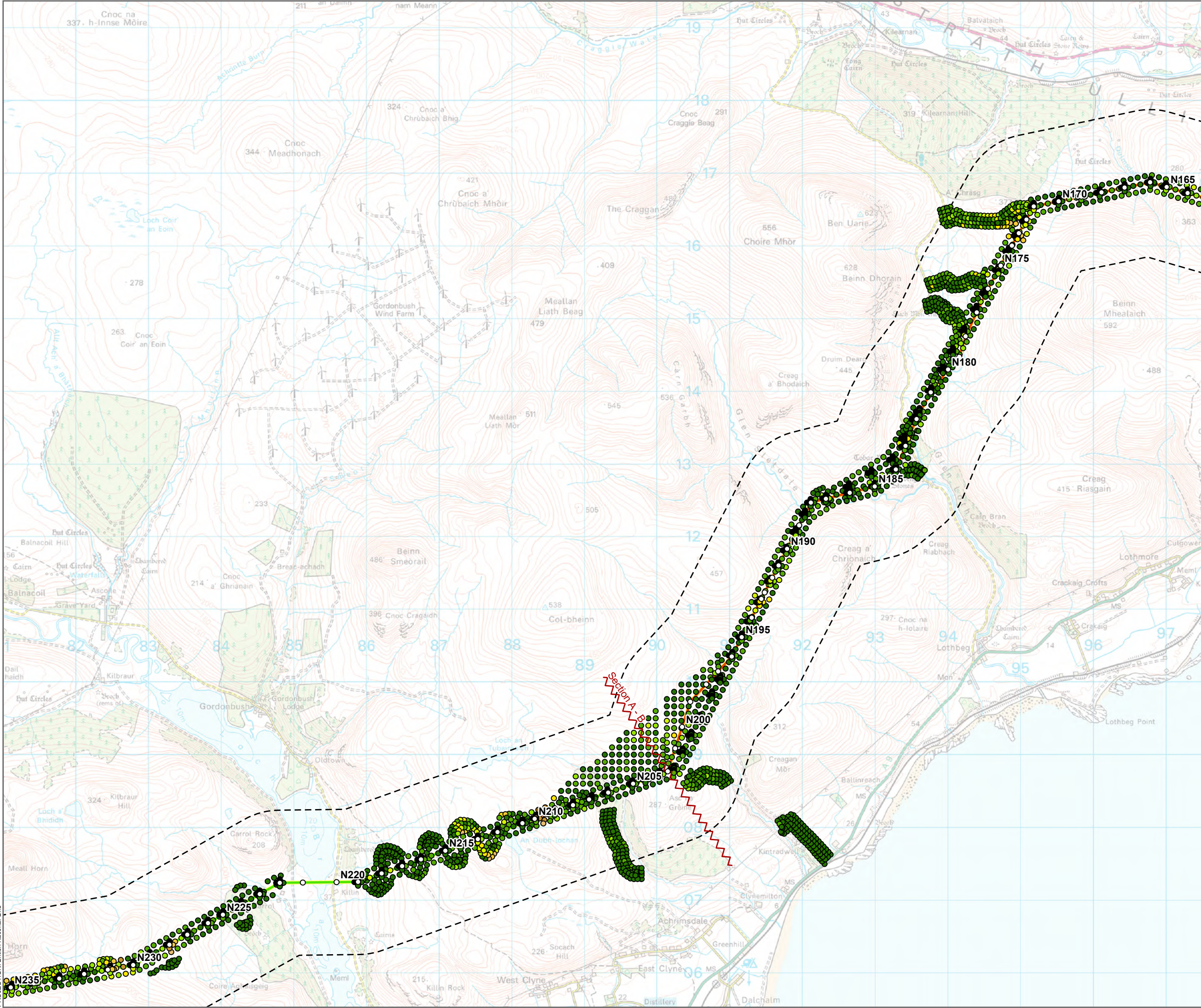
Path: \uksprdgfs01\Data\Arcus\Projects\0652629 - SSE Beaulay to Loch Buidhe\Workspace\Engineering\SLBB Engineering v1.aprx - 0652659 - Figure 11.2.2 - Recorded Peat Depths - A01



SCALE: See Scale Bar	VERSION: A02
SIZE: A3	DRAWN: BW
PROJECT: 0720281	CHECKED: CM
DATE: 07/08/2025	APPROVED: KG

Figure 2 - 4
Spittal - Loch Buidhe - Beaulieu 400kV OHL
Connection
Peat Management Plan
Recorded Peat Depths





○ Tower Location

— Alignment Section A

— Alignment Section B

— Alignment Section Break

--- Study Area (1 km Buffer)

Recorded Peat Depth (m)

- 0.01 - 0.50
- 0.51 - 1.00
- 1.01 - 1.50
- 1.51 - 2.00
- 2.01 - 2.50
- 2.51 - 3.00
- 3.01 - 4.00
- 4.01 - 5.00
- 5.01 - 6.00
- 6.01 - 7.00
- >7

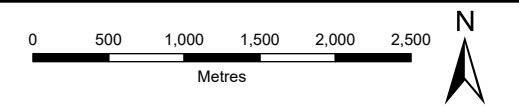
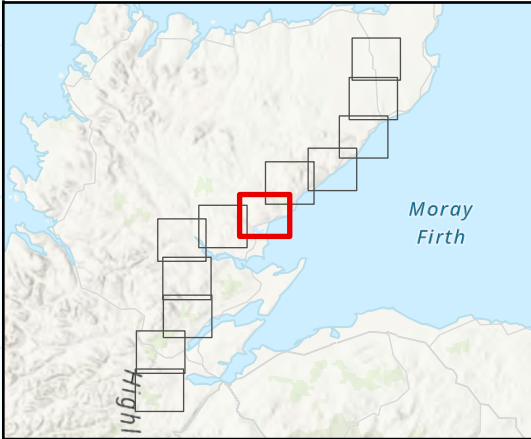
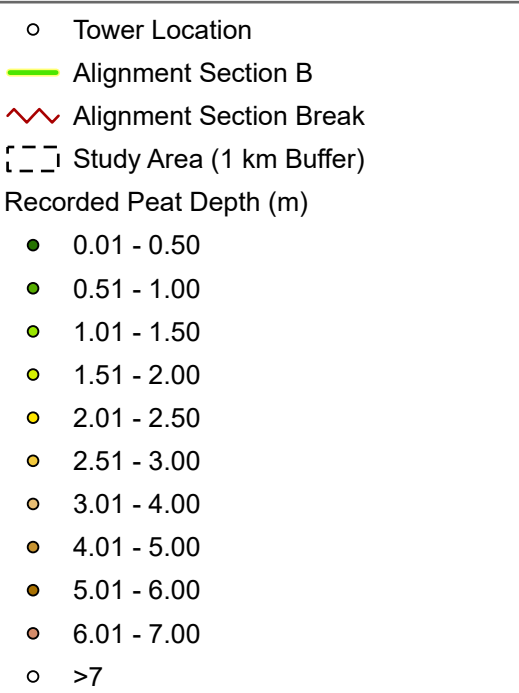
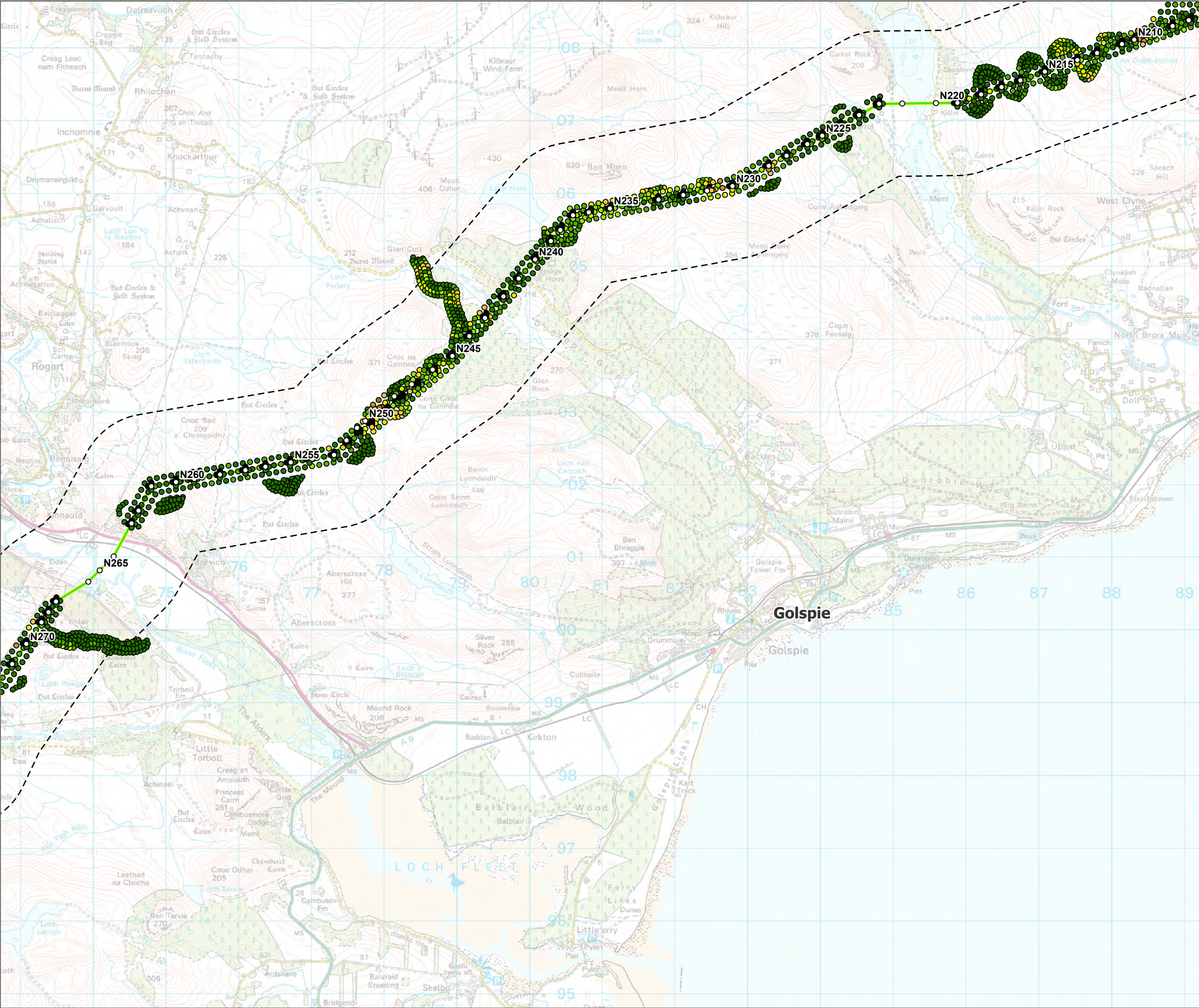
0 500 1,000 1,500 2,000 2,500

Metres

N

SCALE: See Scale Bar	VERSION: A02
SIZE: A3	DRAWN: BW
PROJECT: 0720281	CHECKED: CM
DATE: 07/08/2025	APPROVED: KG

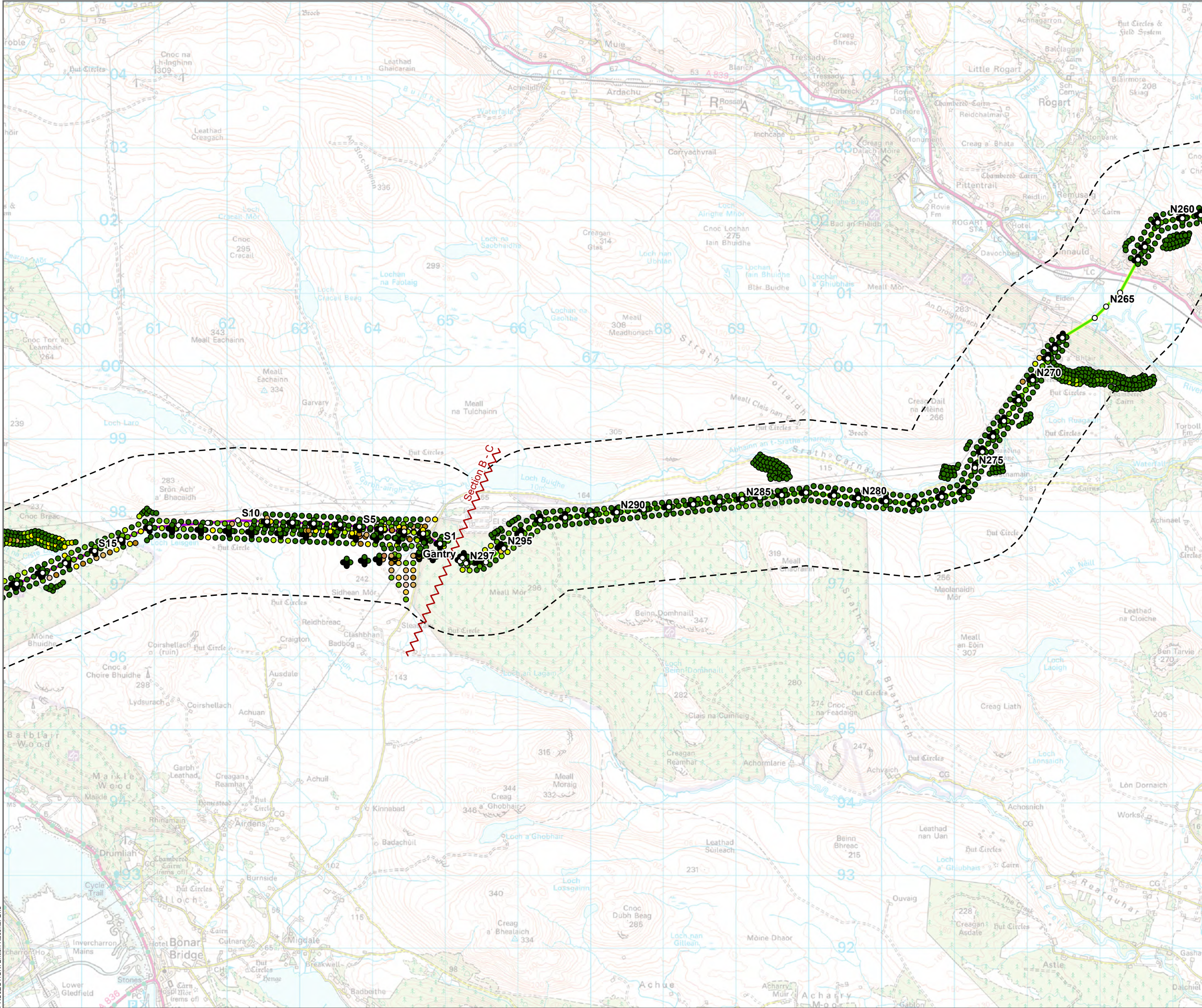
Figure 2 - 5
Spittal - Loch Buidhe - Beaulieu 400kV OHL
Connection
Peat Management Plan
Recorded Peat Depths



SCALE: See Scale Bar	VERSION: A02
SIZE: A3	DRAWN: BW
PROJECT: 0720281	CHECKED: CM
DATE: 07/08/2025	APPROVED: KG

Figure 2 - 6
Spittal - Loch Buidhe - Beaulieu 400kV OHL
Connection
Peat Management Plan
Recorded Peat Depths





○ Tower Location

— Alignment Section B

— Alignment Section C

— Alignment Section Break

--- Study Area (1 km Buffer)

Recorded Peat Depth (m)

- 0.01 - 0.50
- 0.51 - 1.00
- 1.01 - 1.50
- 1.51 - 2.00
- 2.01 - 2.50
- 2.51 - 3.00
- 3.01 - 4.00
- 4.01 - 5.00
- 5.01 - 6.00
- 6.01 - 7.00
- >7

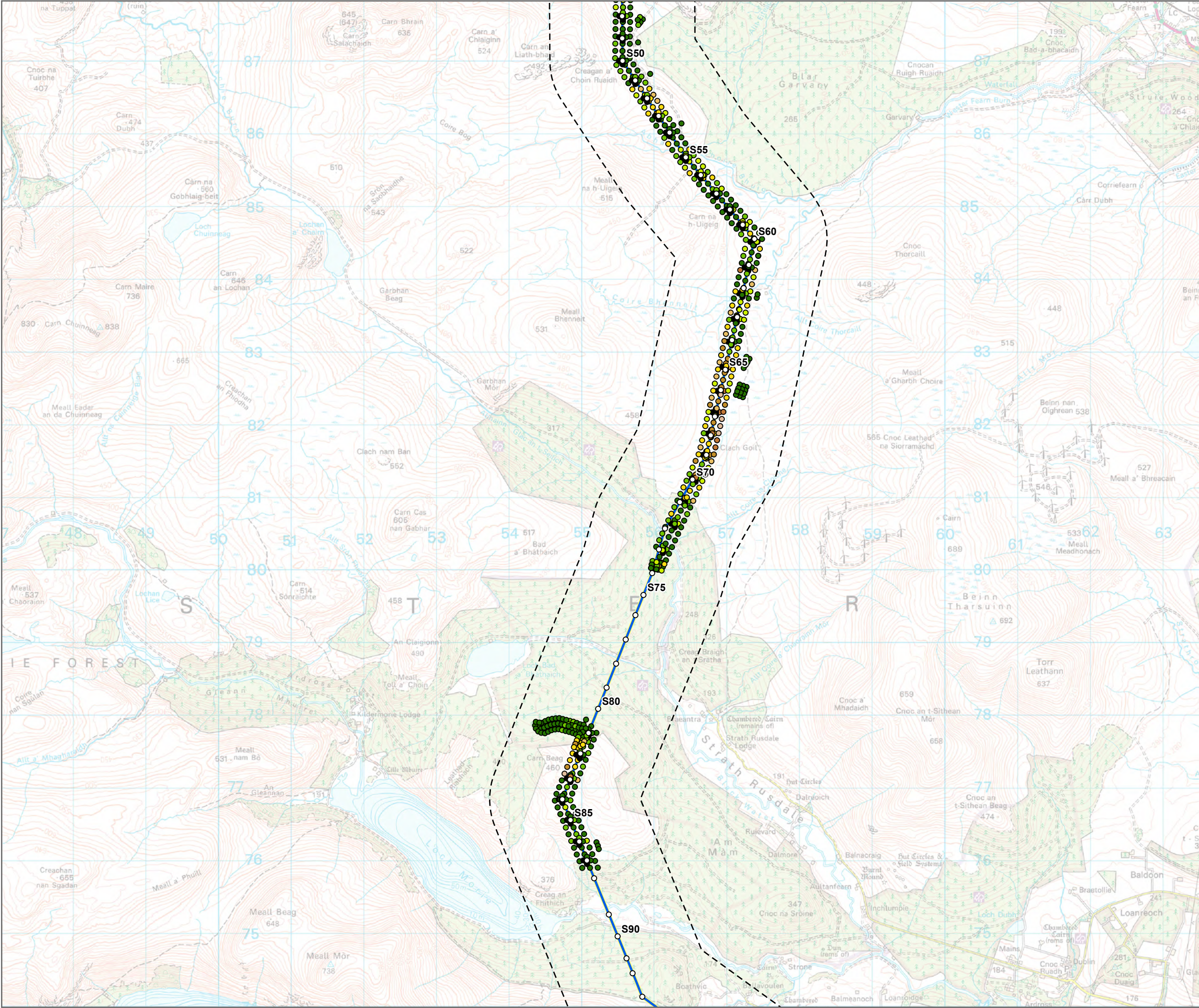
0 500 1,000 1,500 2,000 2,500

Metres

N

SCALE: See Scale Bar	VERSION: A02
SIZE: A3	DRAWN: BW
PROJECT: 0720281	CHECKED: CM
DATE: 07/08/2025	APPROVED: KG

Figure 2 - 7
Spittal - Loch Buidhe - Beaulieu 400kV OHL
Connection
Peat Management Plan
Recorded Peat Depths



Tower Location

Alignment Section D

Alignment Section Break

Study Area (1 km Buffer)

Recorded Peat Depth (m)

0.01 - 0.50

0.51 - 1.00

1.01 - 1.50

1.51 - 2.00

2.01 - 2.50

2.51 - 3.00

3.01 - 4.00

4.01 - 5.00

5.01 - 6.00

6.01 - 7.00

>7

0

500

1,000

1,500

2,000

2,500

Metres

N

SCALE: See Scale Bar

VERSION: A02

SIZE: A3

DRAWN: BW

PROJECT: 0720281

CHECKED: CM

DATE: 07/08/2025

APPROVED: KG

Figure 2 - 9

Spittal - Loch Buidhe - Beaulieu 400kV OHL Connection

Peat Management Plan

Recorded Peat Depths

ERM

Scottish & Southern Electricity Networks

TRANSMISSION

PROJECTION: British National Grid

© Landmark Information Group Limited and/or its Data Suppliers (All rights reserved 2010); Sources: Esri, TomTom, Garmin, FAO, NOAA, USGS, © OpenStreetMap contributors, and the GIS User Community, Esri, USGS

Path: \uksprdgisf01\Data\Arcus\Projects\0652629 - SSE Beaulieu to Loch Buidhe\Workspace\Engineering\SLBB Engineering v1.aprx - 0652659 - Figure 11.2.2 - Recorded Peat Depths - A01