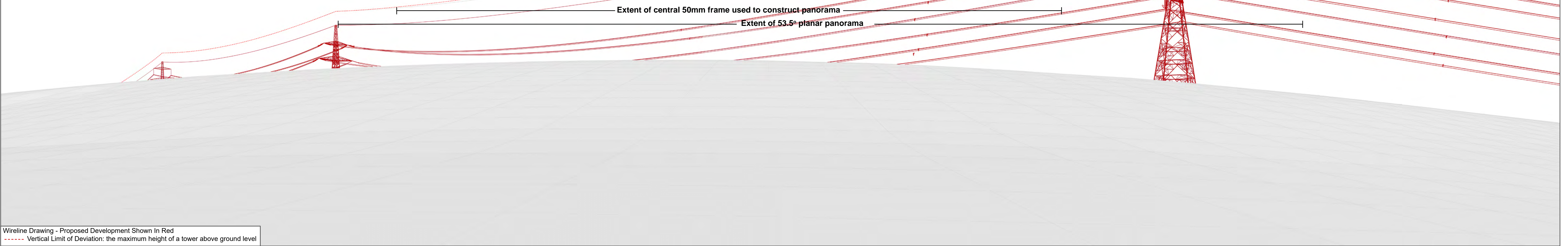




Baseline Photograph

This image provides landscape and visual context only



Wireline Drawing - Proposed Development Shown In Red  
----- Vertical Limit of Deviation: the maximum height of a tower above ground level

**Figure: CHVP-04.1a**  
Cultural Heritage Viewpoint 4: Buolacrabher, settlement

**Beauly to Spittal OHL**



OS reference:	315466 933500	Horizontal field of view:	(90° cylindrical projection)	Camera:	Canon EOS R5
Eye Level:	107m AOD	Principal distance:	812.5mm	Lens:	50mm (Canon AF 50mm f/1.2)
Direction of view:	88°			Camera height:	1.5m AGL
Distance to Development:	0.265 km			Date and time:	06/03/2025 15:35

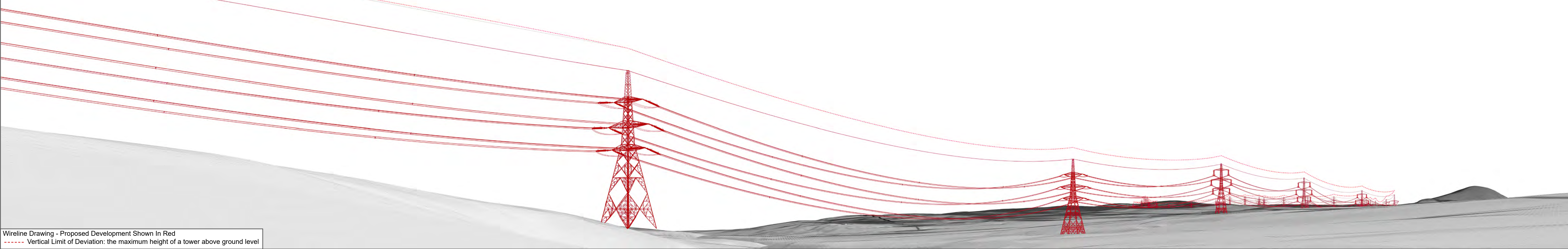






Baseline Photograph

This image provides landscape and visual context only



Wireline Drawing - Proposed Development Shown In Red  
----- Vertical Limit of Deviation: the maximum height of a tower above ground level



OS reference: 315466 933500  
Eye Level: 107m AOD  
Direction of view: 178°  
Distance to Development: 0.265 km

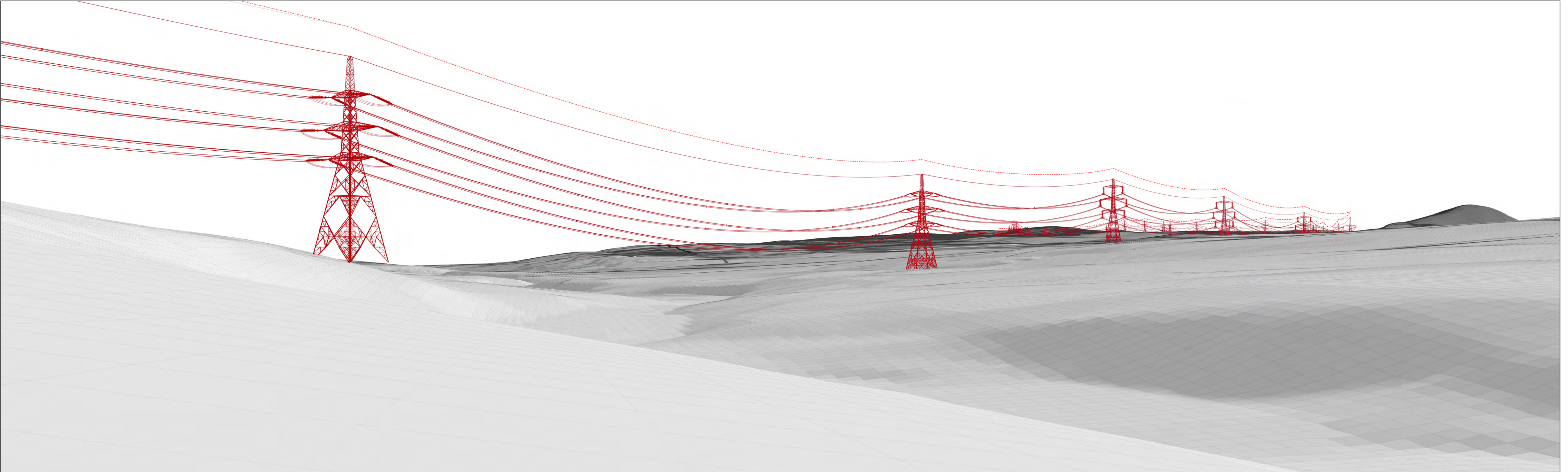
Horizontal field of view: (90° cylindrical projection)  
Principal distance: 812.5mm

Camera: Canon EOS R5  
Lens: 50mm (Canon AF 50mm f/1.2)  
Camera height: 1.5m AGL  
Date and time: 06/03/2025 15:35



**Figure: CHVP-04.1b**  
Cultural Heritage Viewpoint 4: Buolacrabher, settlement  
**Beauly to Spittal OHL**





Wireline Drawing - Proposed Development Shown In Red  
----- Vertical Limit of Deviation: the maximum height of a tower above ground level

View flat at a comfortable arm's length

**Figure: CHVP-04.1c**  
Cultural Heritage Viewpoint 4: Buolacrabher, settlement  
**Beauly to Spittal OHL**



OS reference:	315466 933500	Horizontal field of view:	53.5° (planar projection)	Camera:	Canon EOS R5
Eye Level:	107m AOD	Principal distance:	812.5mm	Lens:	50mm (Canon AF 50mm f/1.2)
Direction of view:	102°	Paper size:	841 x 297 mm	Camera height:	1.5m AGL
Distance to Development:	0.265 km	Correct printed image size:	820 x 260 mm	Date and time:	06/03/2025 15:35





Photomontage

View flat at a comfortable arm's length

OS reference:	315466 933500	Horizontal field of view:	53.5° (planar projection)	Camera:	Canon EOS R5
Eye Level:	107m AOD	Principal distance:	812.5mm	Lens:	50mm (Canon AF 50mm f/1.2)
Direction of view:	102°	Paper size:	841 x 297 mm	Camera height:	1.5m AGL
Distance to Development:	0.265 km	Correct printed image size:	820 x 260 mm	Date and time:	06/03/2025 15:35



**Figure: CHVP-04.1d**  
Cultural Heritage Viewpoint 4: Buolacrabher, settlement  
**Beauly to Spittal OHL**