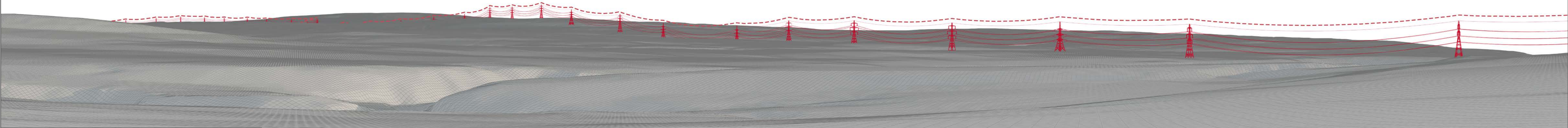
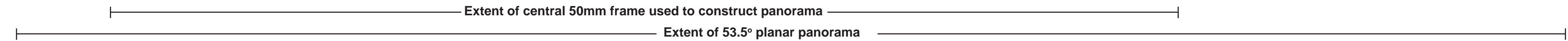




Baseline Photograph

This image provides landscape and visual context only



Wireline Drawing - Proposed Development Shown In Red  
 - - - - - Vertical Limit of Deviation: the maximum height of a tower above ground level

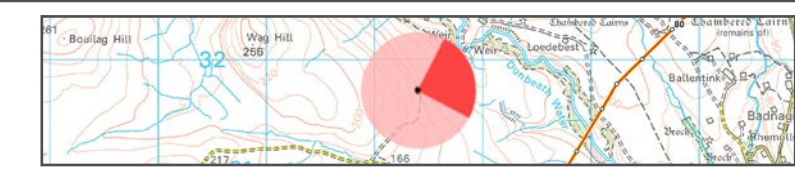
**Figure: CHVP 13.1a**  
 Cultural Heritage Viewpoint 13: Loedebest (SM5254)  
**Beauly to Spittal OHL**



OS reference: 312408 931726  
 Eye Level: 136m AOD  
 Direction of view: 72°  
 Distance to Development: 1.59 km

Horizontal field of view: (90° cylindrical projection)  
 Principal distance: 812.5mm

Camera: Canon EOS R5  
 Lens: 50mm (Canon AF 50mm f/1.2)  
 Camera height: 1.5m AGL  
 Date and time: 17/01/2025 10:00

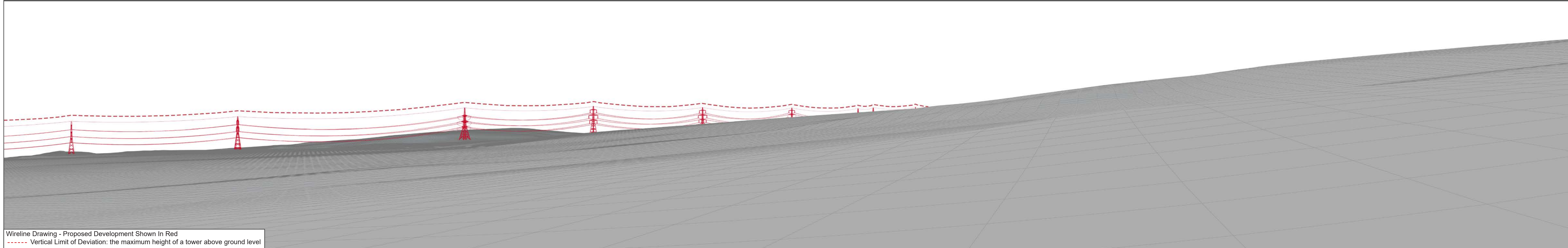




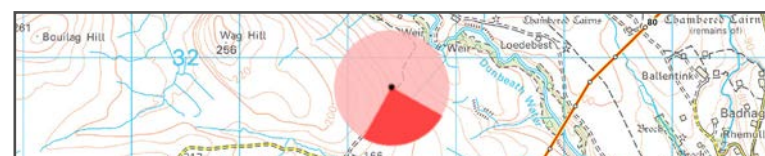


Baseline Photograph

This image provides landscape and visual context only



Wireline Drawing - Proposed Development Shown In Red  
 - - - - Vertical Limit of Deviation: the maximum height of a tower above ground level



OS reference: 312408 931726  
 Eye Level: 136m AOD  
 Direction of view: 162°  
 Distance to Development: 1.59 km

Horizontal field of view: (90° cylindrical projection)  
 Principal distance: 812.5mm

Camera:  
 Lens:  
 Camera height:  
 Date and time:

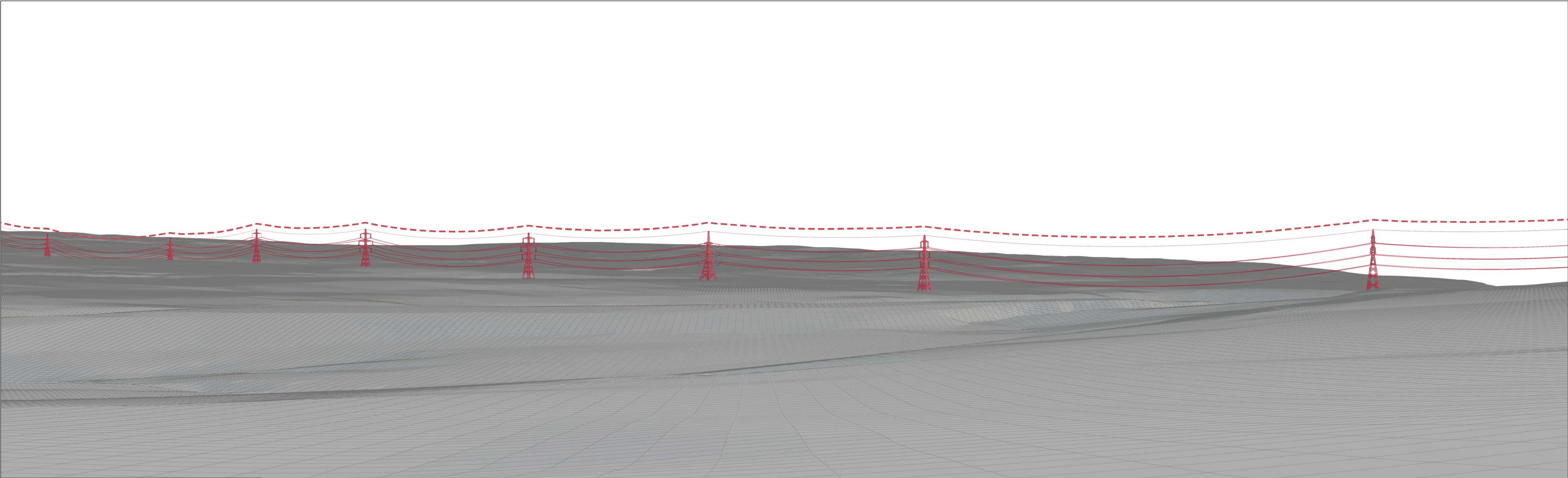
Canon EOS R5  
 50mm (Canon AF 50mm f/1.2)  
 1.5m AGL  
 17/01/2025 10:00



**Figure: CHVP 13.1b**  
 Cultural Heritage Viewpoint 13: Loedebest (SM5254)

**Beauly to Spittal OHL**





Wireline Drawing - Proposed Development Shown In Red  
 - - - - - Vertical Limit of Deviation: the maximum height of a tower above ground level

View flat at a comfortable arm's length

**Figure: CHVP 13.1c**  
 Cultural Heritage Viewpoint 13: Loedebest (SM5254)  
**Beauly to Spittal OHL**



OS reference: 312408 931726  
 Eye Level: 136m AOD  
 Direction of view: 72°  
 Distance to Development: 1.59 km

Horizontal field of view: 53.5° (planar projection)  
 Principal distance: 812.5mm  
 Paper size: 841 x 297 mm  
 Correct printed image size: 820 x 260 mm

Camera: Canon EOS R5  
 Lens: 50mm (Canon AF 50mm f/1.2)  
 Camera height: 1.5m AGL  
 Date and time: 17/01/2025 10:00





Photomontage

View flat at a comfortable arm's length

OS reference:	312408 931726	Horizontal field of view:	53.5° (planar projection)	Camera:	Canon EOS R5
Eye Level:	136m AOD	Principal distance:	812.5mm	Lens:	50mm (Canon AF 50mm f/1.2)
Direction of view:	72°	Paper size:	841 x 297 mm	Camera height:	1.5m AGL
Distance to Development:	1.59 km	Correct printed image size:	820 x 260 mm	Date and time:	17/01/2025 10:00



**Figure: CHVP 13.1d**  
 Cultural Heritage Viewpoint 13: Loedebest (SM5254)

**Beauly to Spittal OHL**