

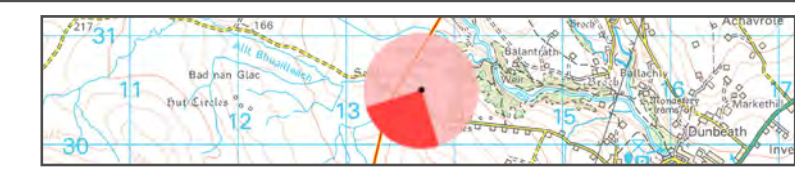
**Figure: CHVP-17.1a**  
 Cultural Heritage Viewpoint 17: Achorn, broch  
**Beauly to Spittal OHL**



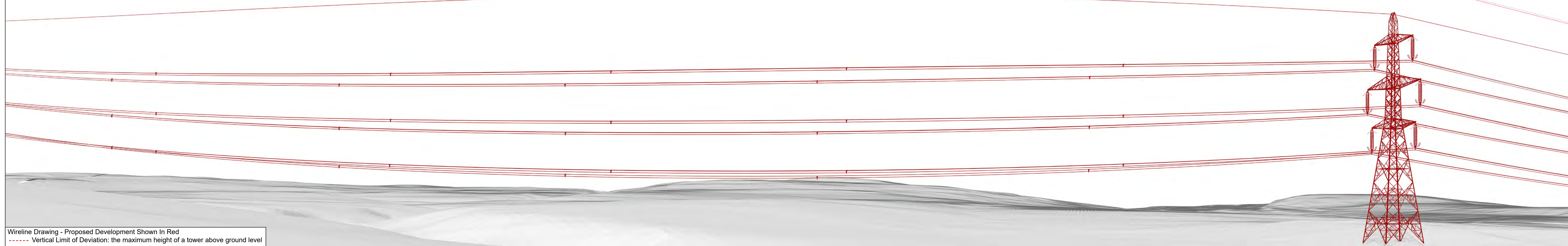
OS reference: 313690 930489  
 Eye Level: 133m AOD  
 Direction of view: 209°  
 Distance to Development: 0.185 km

Horizontal field of view: (90° cylindrical projection)  
 Principal distance: 812.5mm

Camera: Canon EOS R5  
 Lens: 50mm (Canon AF 50mm f/1.2)  
 Camera height: 1.5m AGL  
 Date and time: 07/03/2025 10:30







OS reference: 313690 930489  
 Eye Level: 133m AOD  
 Direction of view: 299°  
 Distance to Development: 0.185 km

Horizontal field of view: (90° cylindrical projection)  
 Principal distance: 812.5mm

Camera: Canon EOS R5  
 Lens: 50mm (Canon AF 50mm f/1.2)  
 Camera height: 1.5m AGL  
 Date and time: 07/03/2025 10:30



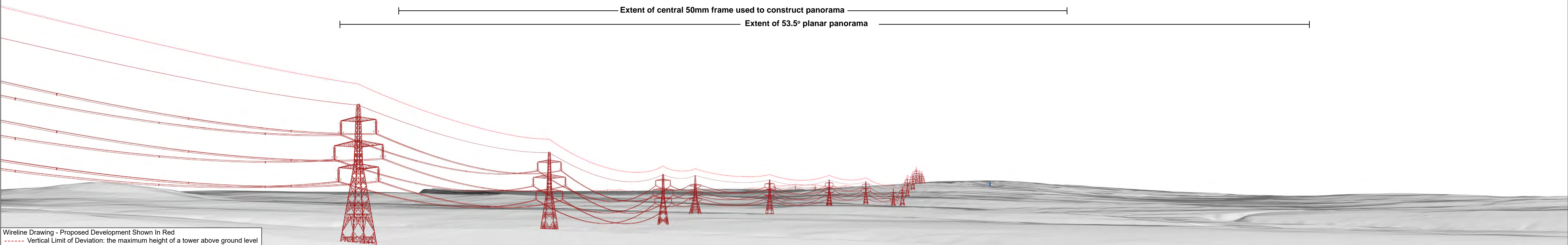
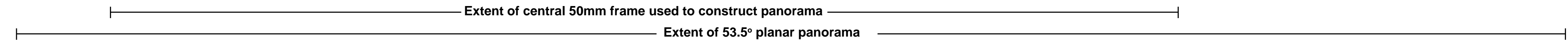
**Figure: CHVP-17.1b**  
 Cultural Heritage Viewpoint 17: Achorn, broch  
 Beauly to Spittal OHL





Baseline Photograph

This image provides landscape and visual context only



Wireline Drawing - Proposed Development Shown In Red  
 - - - - Vertical Limit of Deviation: the maximum height of a tower above ground level

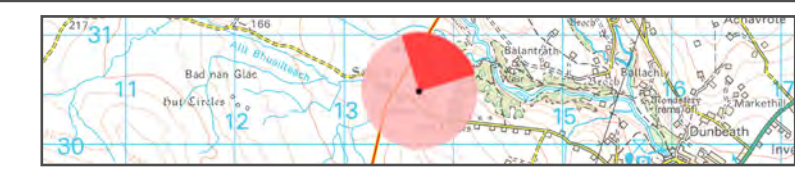
**Figure: CHVP-17.1c**  
 Cultural Heritage Viewpoint 17: Achorn, broch  
**Beauly to Spittal OHL**



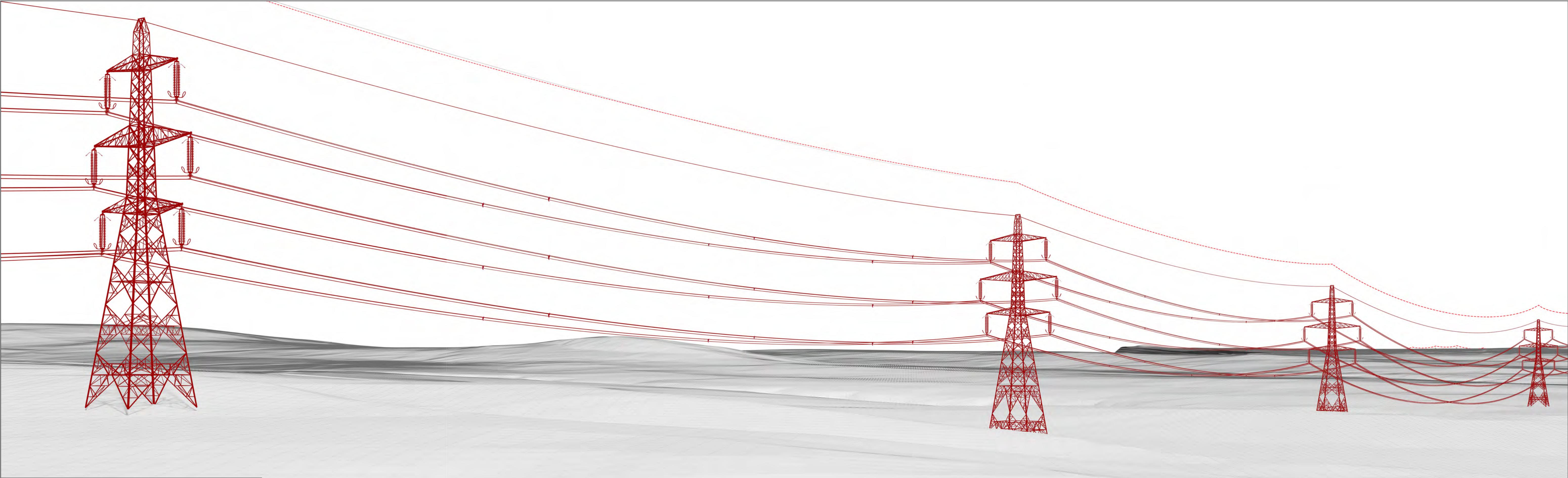
OS reference: 313690 930489  
 Eye Level: 133m AOD  
 Direction of view: 29°  
 Distance to Development: 0.185 km

Horizontal field of view: (90° cylindrical projection)  
 Principal distance: 812.5mm

Camera: Canon EOS R5  
 Lens: 50mm (Canon AF 50mm f/1.2)  
 Camera height: 1.5m AGL  
 Date and time: 07/03/2025 10:30







Wireline Drawing - Proposed Development Shown In Red  
 - - - - - Vertical Limit of Deviation: the maximum height of a tower above ground level

View flat at a comfortable arm's length

**Figure: CHVP-17.1d**  
 Cultural Heritage Viewpoint 17: Achorn, broch  
**Beauly to Spittal OHL**



OS reference: 313690 930489  
 Eye Level: 133m AOD  
 Direction of view: 102°  
 Distance to Development: 0.185 km

Horizontal field of view: 53.5° (planar projection)  
 Principal distance: 812.5mm  
 Paper size: 841 x 297 mm  
 Correct printed image size: 820 x 260 mm

Camera: Canon EOS R5  
 Lens: 50mm (Canon AF 50mm f/1.2)  
 Camera height: 1.5m AGL  
 Date and time: 07/03/2025 10:30





Photomontage

View flat at a comfortable arm's length

OS reference:	313690 930489	Horizontal field of view:	53.5° (planar projection)	Camera:	Canon EOS R5
Eye Level:	133m AOD	Principal distance:	812.5mm	Lens:	50mm (Canon AF 50mm f/1.2)
Direction of view:	102°	Paper size:	841 x 297 mm	Camera height:	1.5m AGL
Distance to Development:	0.185 km	Correct printed image size:	820 x 260 mm	Date and time:	07/03/2025 10:30



**Figure: CHVP-17.1e**  
Cultural Heritage Viewpoint 17: Achorn, broch

**Beauly to Spittal OHL**