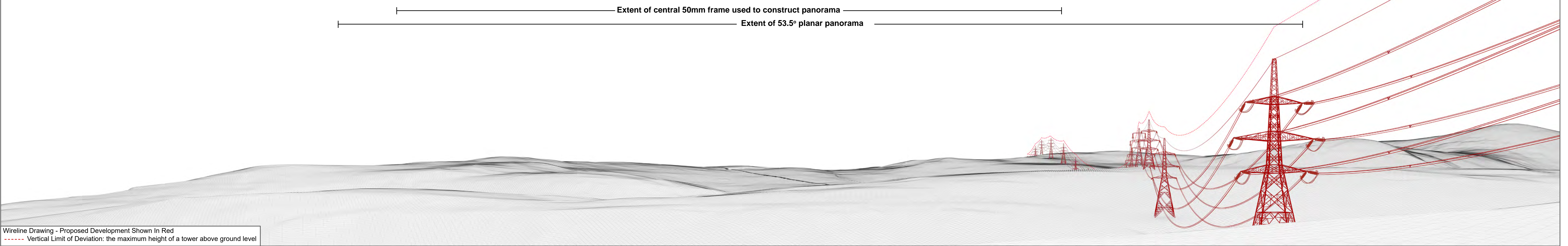




Baseline Photograph

This image provides landscape and visual context only

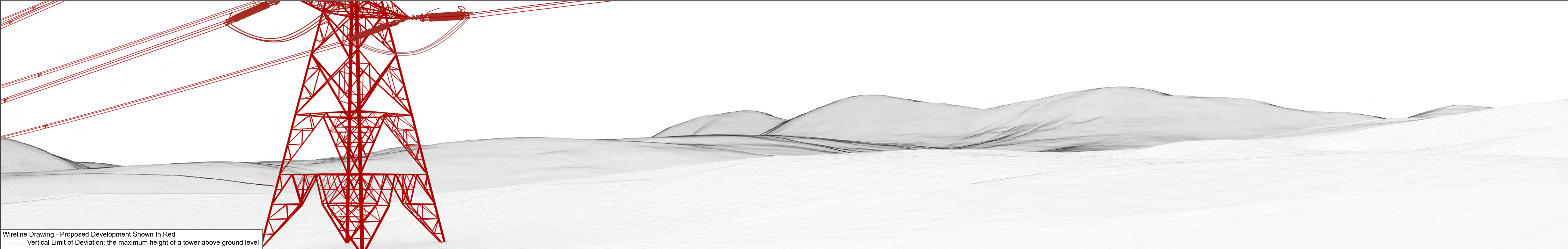


Wireline Drawing - Proposed Development Shown In Red
----- Vertical Limit of Deviation: the maximum height of a tower above ground level

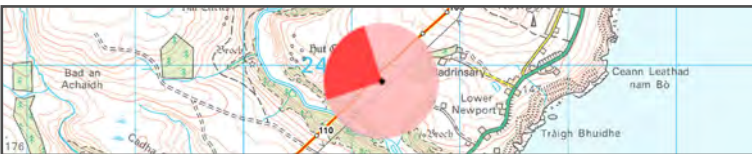


Baseline Photograph

This image provides landscape and visual context only



Wireline Drawing - Proposed Development Shown In Red
----- Vertical Limit of Deviation: the maximum height of a tower above ground level



| | | | | | |
|--------------------------|---------------|---------------------------|------------------------------|----------------|----------------------------|
| OS reference: | 311270 923851 | Horizontal field of view: | (90° cylindrical projection) | Camera: | Canon EOS R5 |
| Eye Level: | 114m AOD | Principal distance: | 812.5mm | Lens: | 50mm (Canon AF 50mm f/1.2) |
| Direction of view: | 298° | | | Camera height: | 1.5m AGL |
| Distance to Development: | 0.055 km | | | Date and time: | 05/02/2025 16:30 |

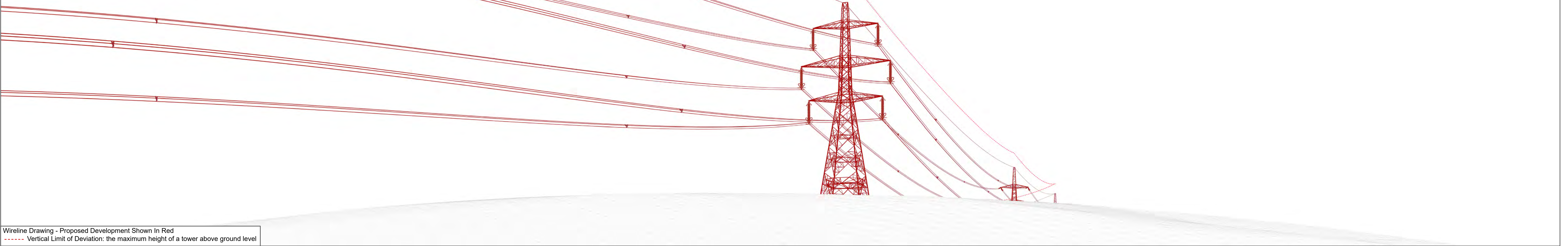


Figure: CHVP-20.1b
Cultural Heritage Viewpoint 20: Rinsary
Beauly to Spittal OHL



Baseline Photograph



This image provides landscape and visual context only



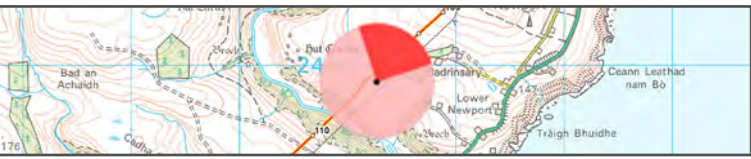
Wireline Drawing - Proposed Development Shown In Red
----- Vertical Limit of Deviation: the maximum height of a tower above ground level

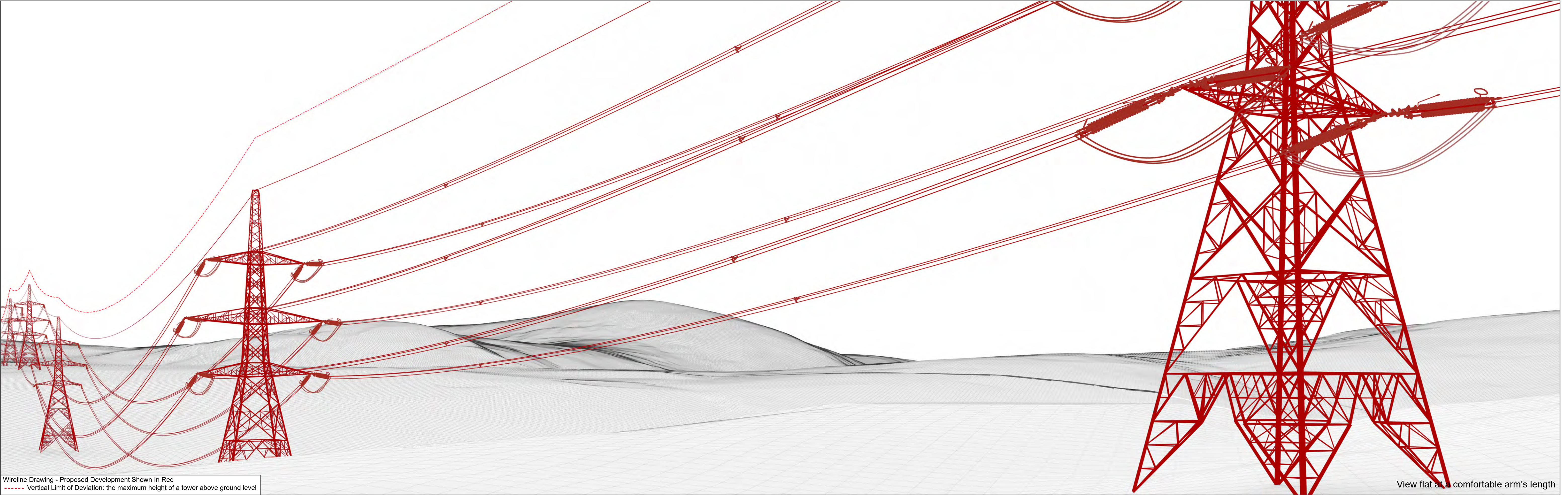
Figure: CHVP-20.1c
Cultural Heritage Viewpoint 20: Rinsary

Beauly to Spittal OHL



| | | | | | |
|--------------------------|---------------|---------------------------|------------------------------|----------------|----------------------------|
| OS reference: | 311270 923851 | Horizontal field of view: | (90° cylindrical projection) | Camera: | Canon EOS R5 |
| Eye Level: | 114m AOD | Principal distance: | 812.5mm | Lens: | 50mm (Canon AF 50mm f/1.2) |
| Direction of view: | 28° | | | Camera height: | 1.5m AGL |
| Distance to Development: | 0.055 km | | | Date and time: | 05/02/2025 16:30 |





Wireline Drawing - Proposed Development Shown In Red
----- Vertical Limit of Deviation: the maximum height of a tower above ground level

Figure: CHVP-20.1d
Cultural Heritage Viewpoint 20: Rinsary
Beauly to Spittal OHL



OS reference: 311270 923851
Eye Level: 114m AOD
Direction of view: 238°
Distance to Development: 0.055 km

Horizontal field of view: 53.5° (planar projection)
Principal distance: 812.5mm
Paper size: 841 x 297 mm
Correct printed image size: 820 x 260 mm

Camera: Canon EOS R5
Lens: 50mm (Canon AF 50mm f/1.2)
Camera height: 1.5m AGL
Date and time: 05/02/2025 16:30



Photomontage

View flat at a comfortable arm's length

| | | | | | |
|--------------------------|---------------|-----------------------------|---------------------------|----------------|----------------------------|
| OS reference: | 311270 923851 | Horizontal field of view: | 53.5° (planar projection) | Camera: | Canon EOS R5 |
| Eye Level: | 114m AOD | Principal distance: | 812.5mm | Lens: | 50mm (Canon AF 50mm f/1.2) |
| Direction of view: | 238° | Paper size: | 841 x 297 mm | Camera height: | 1.5m AGL |
| Distance to Development: | 0.055 km | Correct printed image size: | 820 x 260 mm | Date and time: | 05/02/2025 16:30 |