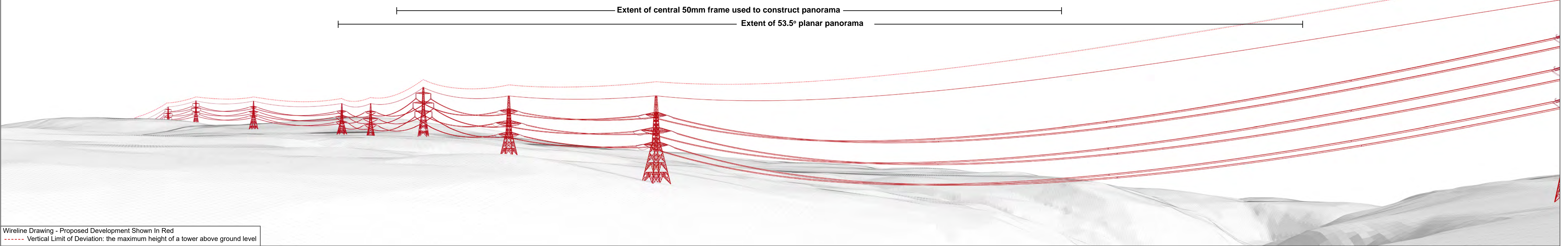




Baseline Photograph

This image provides landscape and visual context only



Wireline Drawing - Proposed Development Shown In Red
----- Vertical Limit of Deviation: the maximum height of a tower above ground level

Figure: CHVP-21.1a
Cultural Heritage Viewpoint 21: Cnoc Fionn, hut circle

Beauly to Spittal OHL



OS reference: 310443 923533
Eye Level: 117m AOD
Direction of view: 81°
Distance to Development: 0.28 km

Horizontal field of view: (90° cylindrical projection)
Principal distance: 812.5mm

Camera:
Lens:
Camera height:
Date and time:

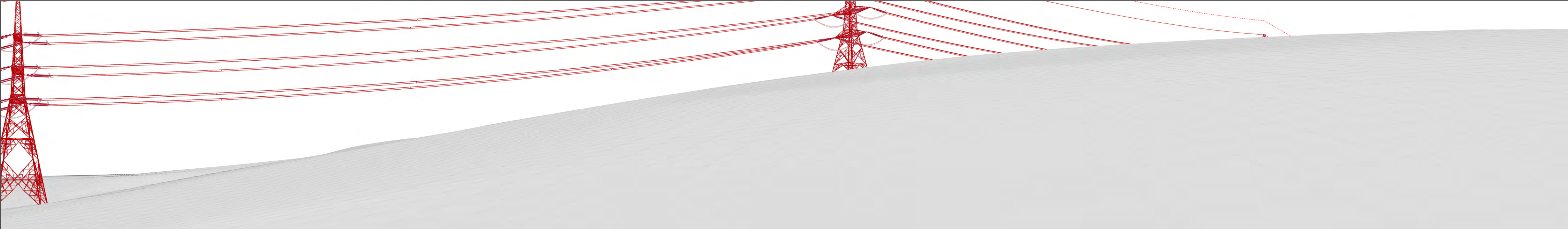
Canon EOS R5
50mm (Canon AF 50mm f/1.2)
1.5m AGL
06/03/2025 12:45





Baseline Photograph

This image provides landscape and visual context only



Wireline Drawing - Proposed Development Shown In Red
----- Vertical Limit of Deviation: the maximum height of a tower above ground level



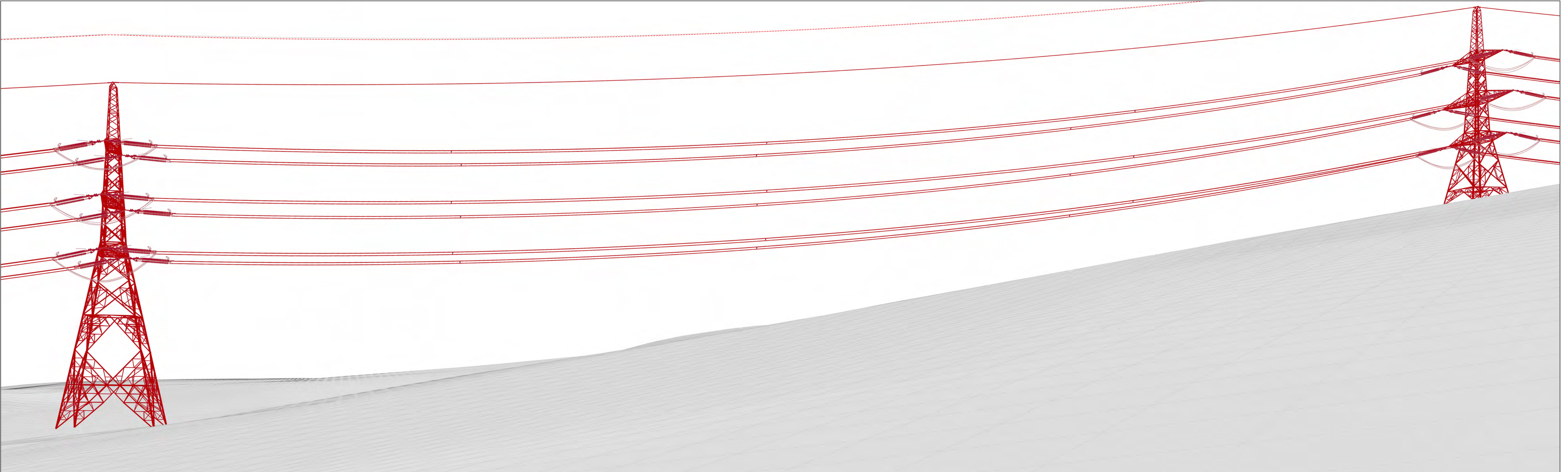
OS reference: 310443 923533
Eye Level: 117m AOD
Direction of view: 171°
Distance to Development: 0.28 km

Horizontal field of view: (90° cylindrical projection)
Principal distance: 812.5mm

Camera: Canon EOS R5
Lens: 50mm (Canon AF 50mm f/1.2)
Camera height: 1.5m AGL
Date and time: 06/03/2025 12:45



Figure: CHVP-21.1b
Cultural Heritage Viewpoint 21: Cnoc Fionn, hut circle
Beauly to Spittal OHL



Wireline Drawing - Proposed Development Shown In Red
----- Vertical Limit of Deviation: the maximum height of a tower above ground level

View flat at a comfortable arm's length

Figure: CHVP-21.1c
Cultural Heritage Viewpoint 21: Cnoc Fionn, hut circle
Beauly to Spittal OHL



OS reference: 310443 923533
Eye Level: 117m AOD
Direction of view: 120°
Distance to Development: 0.28 km

Horizontal field of view: 53.5° (planar projection)
Principal distance: 812.5mm
Paper size: 841 x 297 mm
Correct printed image size: 820 x 260 mm

Camera: Canon EOS R5
Lens: 50mm (Canon AF 50mm f/1.2)
Camera height: 1.5m AGL
Date and time: 06/03/2025 12:45



Photomontage

View flat at a comfortable arm's length

OS reference:	310443 923533	Horizontal field of view:	53.5° (planar projection)	Camera:	Canon EOS R5
Eye Level:	117m AOD	Principal distance:	812.5mm	Lens:	50mm (Canon AF 50mm f/1.2)
Direction of view:	120°	Paper size:	841 x 297 mm	Camera height:	1.5m AGL
Distance to Development:	0.28 km	Correct printed image size:	820 x 260 mm	Date and time:	06/03/2025 12:45

