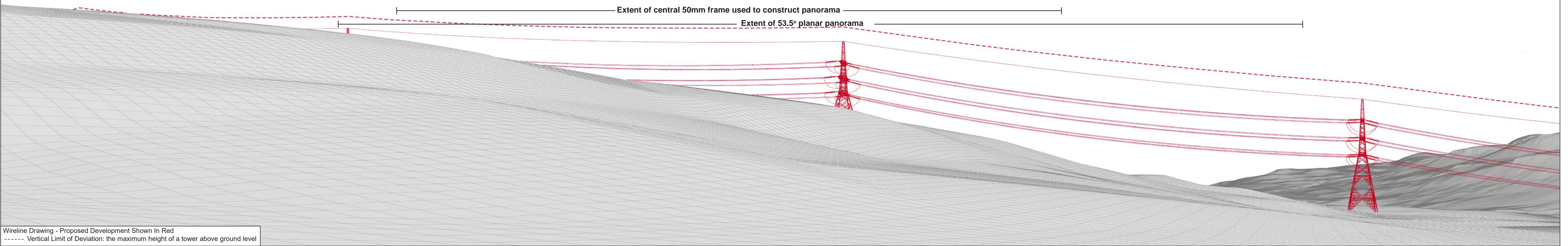




Baseline Photograph

This image provides landscape and visual context only



Wireline Drawing - Proposed Development Shown In Red
----- Vertical Limit of Deviation: the maximum height of a tower above ground level

Figure: CHVP 34.1a
Cultural Heritage Viewpoint 34: Killin
Beauly to Spittal OHL

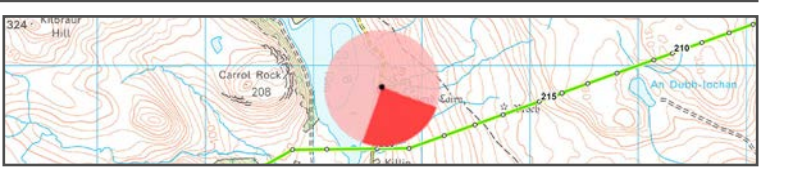


OS reference: 285620 907779
Eye Level: 30m AOD
Direction of view: 150°
Distance to Development: 0.52 km

Horizontal field of view: (90° cylindrical projection)
Principal distance: 812.5mm

Camera:
Lens:
Camera height:
Date and time:

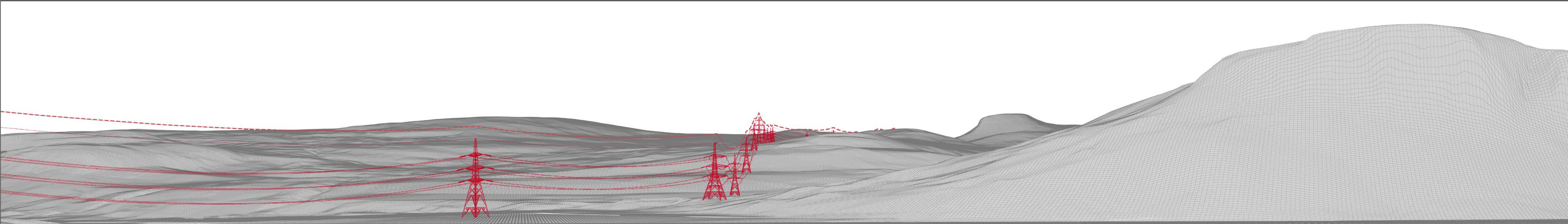
Canon EOS R5
50mm (Canon AF 50mm f/1.2)
1.5m AGL
13/02/2025 16:35



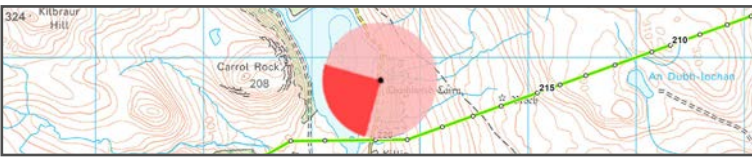


Baseline Photograph

This image provides landscape and visual context only



Wireline Drawing - Proposed Development Shown In Red
----- Vertical Limit of Deviation: the maximum height of a tower above ground level



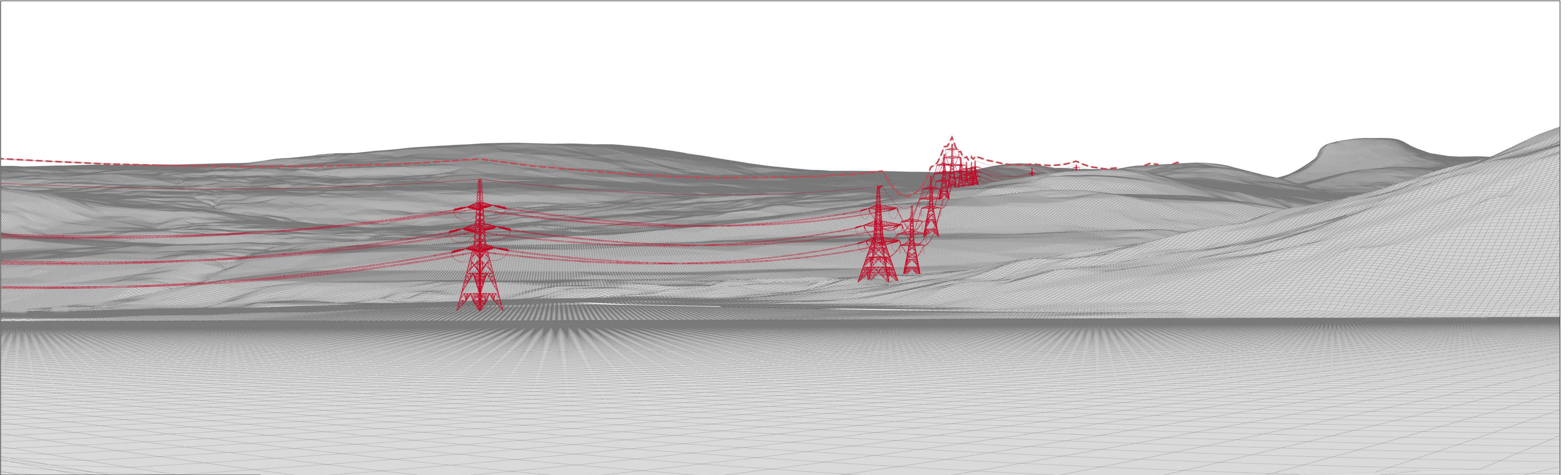
OS reference: 285620 907779
Eye Level: 30m AOD
Direction of view: 241°
Distance to Development: 0.52 km

Horizontal field of view: (90° cylindrical projection)
Principal distance: 812.5mm

Camera: Canon EOS R5
Lens: 50mm (Canon AF 50mm f/1.2)
Camera height: 1.5m AGL
Date and time: 13/02/2025 16:35



Figure: CHVP 34.1b
Cultural Heritage Viewpoint 34: Killin
Beaulieu to Spittal OHL



Wireline Drawing - Proposed Development Shown In Red
----- Vertical Limit of Deviation: the maximum height of a tower above ground level

View flat at a comfortable arm's length



Photomontage

View flat at a comfortable arm's length

| | | | | | |
|--------------------------|---------------|-----------------------------|---------------------------|----------------|----------------------------|
| OS reference: | 285620 907779 | Horizontal field of view: | 53.5° (planar projection) | Camera: | Canon EOS R5 |
| Eye Level: | 30m AOD | Principal distance: | 812.5mm | Lens: | 50mm (Canon AF 50mm f/1.2) |
| Direction of view: | 150° | Paper size: | 841 x 297 mm | Camera height: | 1.5m AGL |
| Distance to Development: | 0.52 km | Correct printed image size: | 820 x 260 mm | Date and time: | 13/02/2025 16:35 |