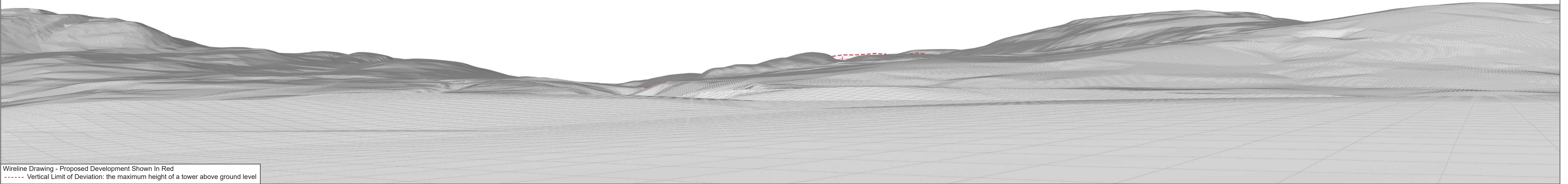




Baseline Photograph

This image provides landscape and visual context only



Wireline Drawing - Proposed Development Shown In Red
----- Vertical Limit of Deviation: the maximum height of a tower above ground level

Figure: CHVP 39.1a
Cultural Heritage Viewpoint 39: Dunrobin Castle western drive

Beauly to Spittal OHL



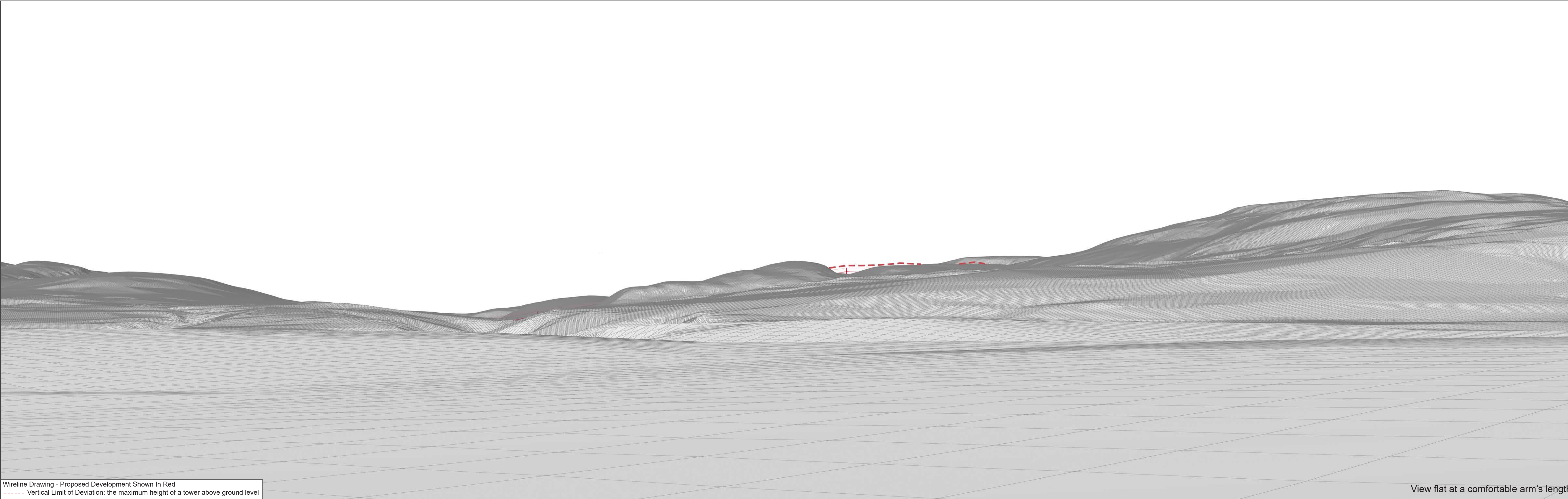
OS reference: 284354 900653
Eye Level: 43m AOD
Direction of view: 319.7°
Distance to Development: 6.18 km

Horizontal field of view: (90° cylindrical projection)
Principal distance: 812.5mm

Camera:
Lens:
Camera height:
Date and time:

Canon EOS R5
50mm (Canon AF 50mm f/1.2)
1.5m AGL
01/02/2025 11:15





Wireline Drawing - Proposed Development Shown In Red
----- Vertical Limit of Deviation: the maximum height of a tower above ground level

View flat at a comfortable arm's length

OS reference:	284354 900653	Horizontal field of view:	53.5° (planar projection)	Camera:	Canon EOS R5
Eye Level:	43m AOD	Principal distance:	812.5mm	Lens:	50mm (Canon AF 50mm f/1.2)
Direction of view:	319.7°	Paper size:	841 x 297 mm	Camera height:	1.5m AGL
Distance to Development:	6.18 km	Correct printed image size:	820 x 260 mm	Date and time:	01/02/2025 11:15



Figure: CHVP 39.1b
Cultural Heritage Viewpoint 39: Dunrobin Castle western drive
Beaully to Spittal OHL



Photomontage

View flat at a comfortable arm's length

Figure: CHVP 39.1c
Cultural Heritage Viewpoint 39: Dunrobin Castle western drive
Beaully to Spittal OHL



OS reference:	284354 900653	Horizontal field of view:	53.5° (planar projection)	Camera:	Canon EOS R5
Eye Level:	43m AOD	Principal distance:	812.5mm	Lens:	50mm (Canon AF 50mm f/1.2)
Direction of view:	319.7°	Paper size:	841 x 297 mm	Camera height:	1.5m AGL
Distance to Development:	6.18 km	Correct printed image size:	820 x 260 mm	Date and time:	01/02/2025 11:15