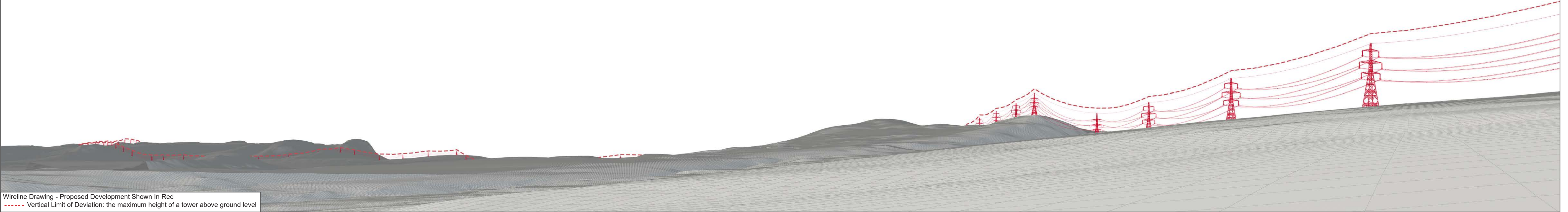




Baseline Photograph

This image provides landscape and visual context only



Wireline Drawing - Proposed Development Shown In Red
----- Vertical Limit of Deviation: the maximum height of a tower above ground level

Figure: CHVP 46.1a
Cultural Heritage Viewpoint 46: Firth View (SM10495/SM4728)
Beauly to Spittal OHL



OS reference: 251459 862811
Eye Level: 275m AOD
Direction of view: 233.8°
Distance to Development: 0.44 km

Horizontal field of view: (90° cylindrical projection)
Principal distance: 812.5mm

Camera:
Lens:
Camera height:
Date and time:

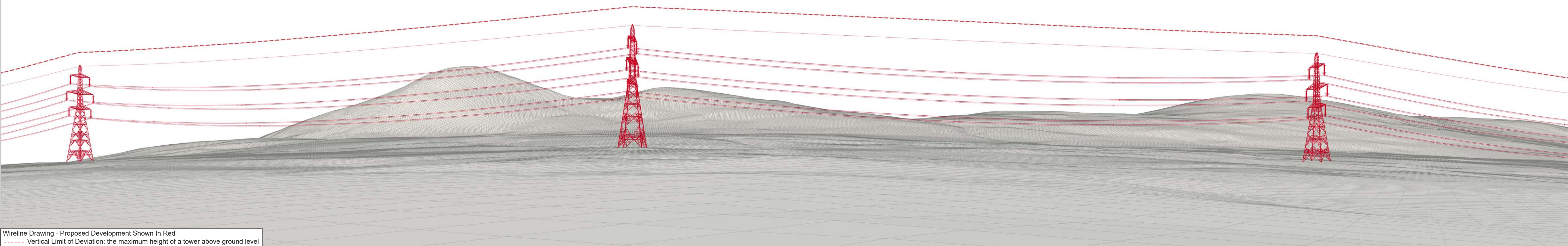
Canon EOS R5
50mm (Canon AF 50mm f/1.2)
1.5m AGL
18/01/2025 11:00



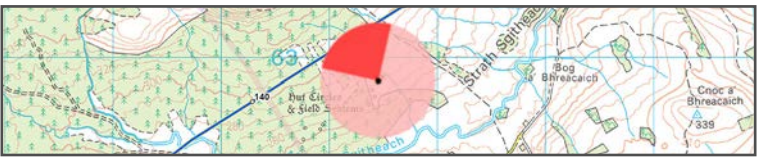


Baseline Photograph

This image provides landscape and visual context only



Wireline Drawing - Proposed Development Shown In Red
----- Vertical Limit of Deviation: the maximum height of a tower above ground level



OS reference:	251459 862811	Horizontal field of view:	(90° cylindrical projection)	Camera:	Canon EOS R5
Eye Level:	275m AOD	Principal distance:	812.5mm	Lens:	50mm (Canon AF 50mm f/1.2)
Direction of view:	323.7°			Camera height:	1.5m AGL
Distance to Development:	0.44 km			Date and time:	18/01/2025 11:00

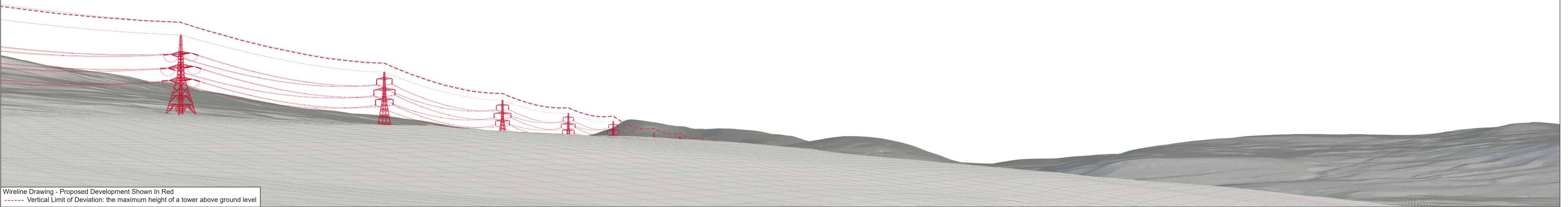


Figure: CHVP 46.1b
Cultural Heritage Viewpoint 46: Firth View (SM10495/SM4728)
Beauly to Spittal OHL



Baseline Photograph

This image provides landscape and visual context only



Wireline Drawing - Proposed Development Shown In Red
----- Vertical Limit of Deviation: the maximum height of a tower above ground level

Figure: CHVP 46.1c
Cultural Heritage Viewpoint 46: Firth View (SM10495/SM4728)

Beauly to Spittal OHL

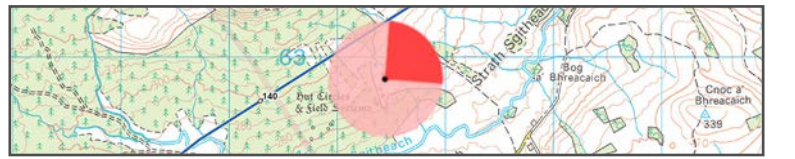


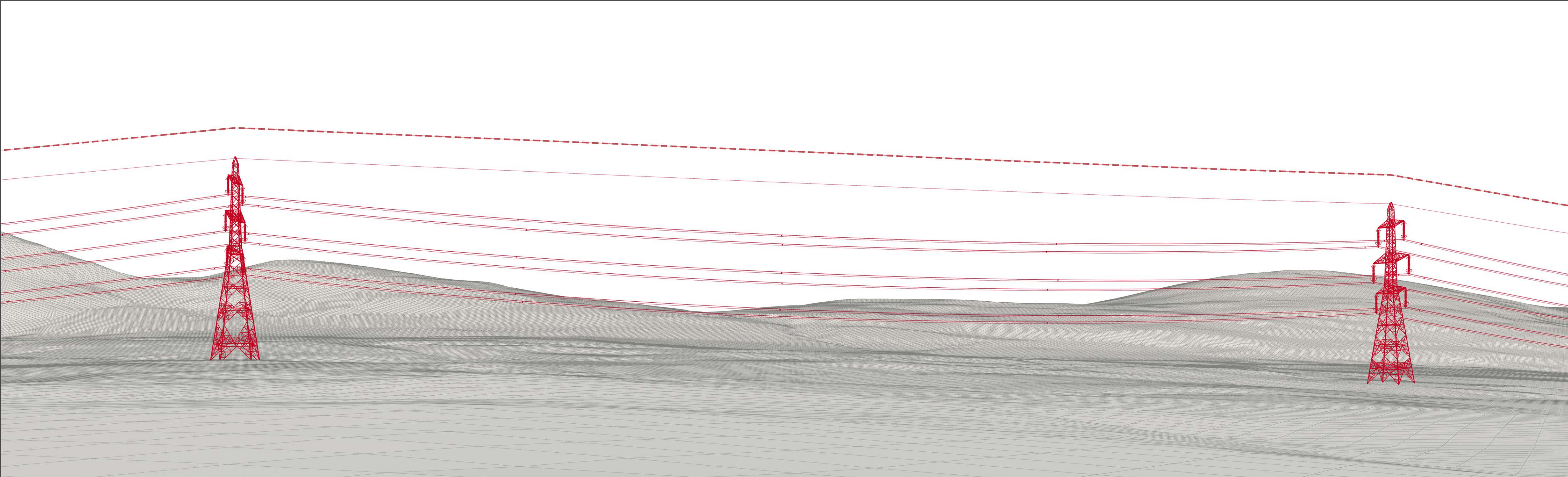
OS reference: 251459 862811
Eye Level: 275m AOD
Direction of view: 53.7°
Distance to Development: 0.44 km

Horizontal field of view: (90° cylindrical projection)
Principal distance: 812.5mm

Camera:
Lens:
Camera height:
Date and time:

Canon EOS R5
50mm (Canon AF 50mm f/1.2)
1.5m AGL
18/01/2025 11:00





Wireline Drawing - Proposed Development Shown In Red
----- Vertical Limit of Deviation: the maximum height of a tower above ground level

View flat at a comfortable arm's length

OS reference:	251459 862811	Horizontal field of view:	53.5° (planar projection)	Camera:	Canon EOS R5
Eye Level:	275m AOD	Principal distance:	812.5mm	Lens:	50mm (Canon AF 50mm f/1.2)
Direction of view:	323.7°	Paper size:	841 x 297 mm	Camera height:	1.5m AGL
Distance to Development:	0.44 km	Correct printed image size:	820 x 260 mm	Date and time:	18/01/2025 11:00



Figure: CHVP 46.1d
Cultural Heritage Viewpoint 46: Firth View (SM10495/SM4728)
Beaulay to Spittal OHL



Photomontage

View flat at a comfortable arm's length

Figure: CHVP 46.1e
Cultural Heritage Viewpoint 46: Firth View (SM10495/SM4728)

Beauly to Spittal OHL



OS reference: 251459 862811
Eye Level: 275m AOD
Direction of view: 323.7°
Distance to Development: 0.44 km

Horizontal field of view: 53.5° (planar projection)
Principal distance: 812.5mm
Paper size: 841 x 297 mm
Correct printed image size: 820 x 260 mm

Camera: Canon EOS R5
Lens: 50mm (Canon AF 50mm f/1.2)
Camera height: 1.5m AGL
Date and time: 18/01/2025 11:00