

Plate 625 SM432 - CHVP\_111 - from asset towards Proposed Development and River Helmsdale (180°)

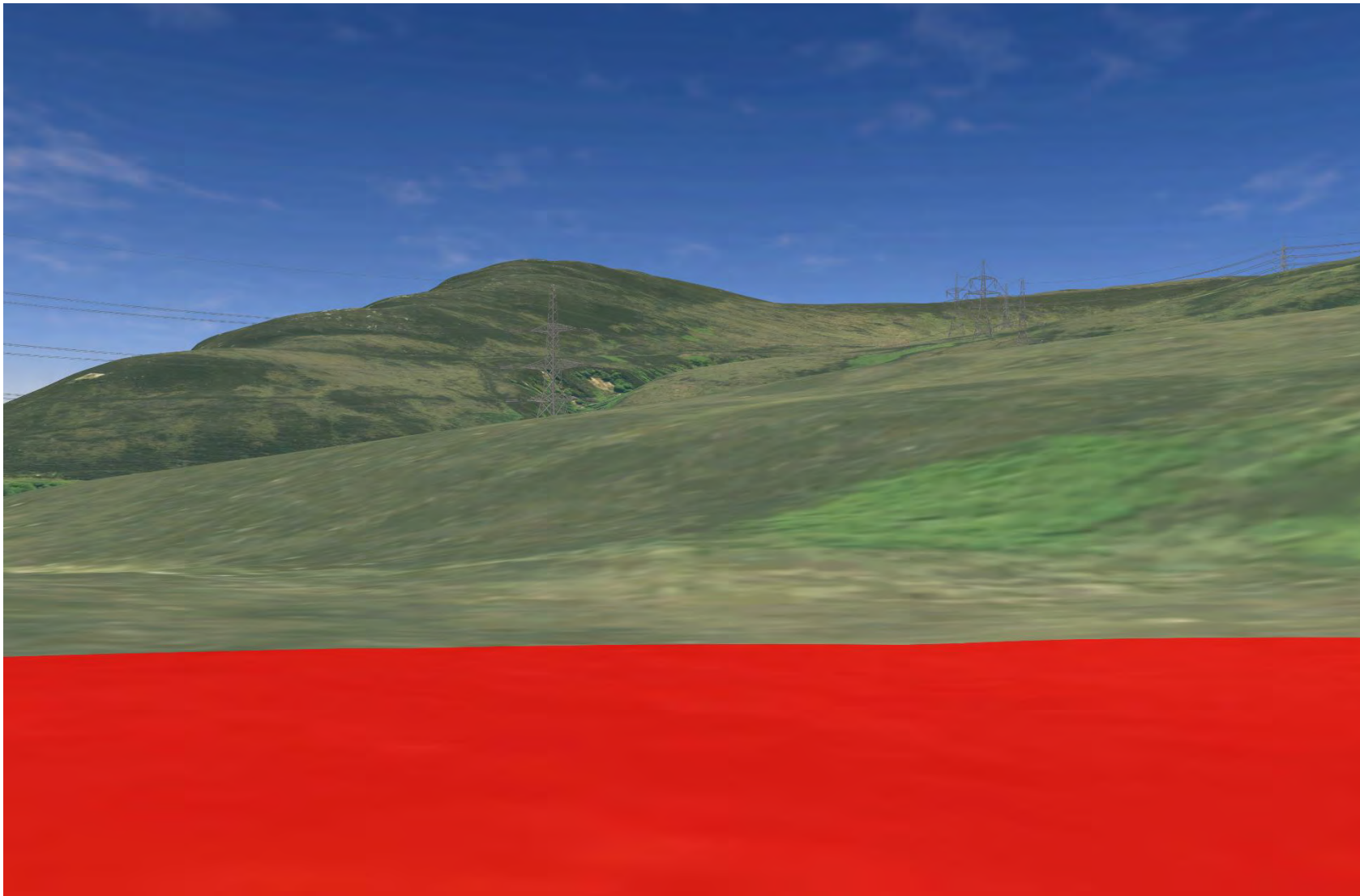


Plate 626 SM432 - CHVP\_111 - from asset towards Proposed Development and River Helmsdale (225°)

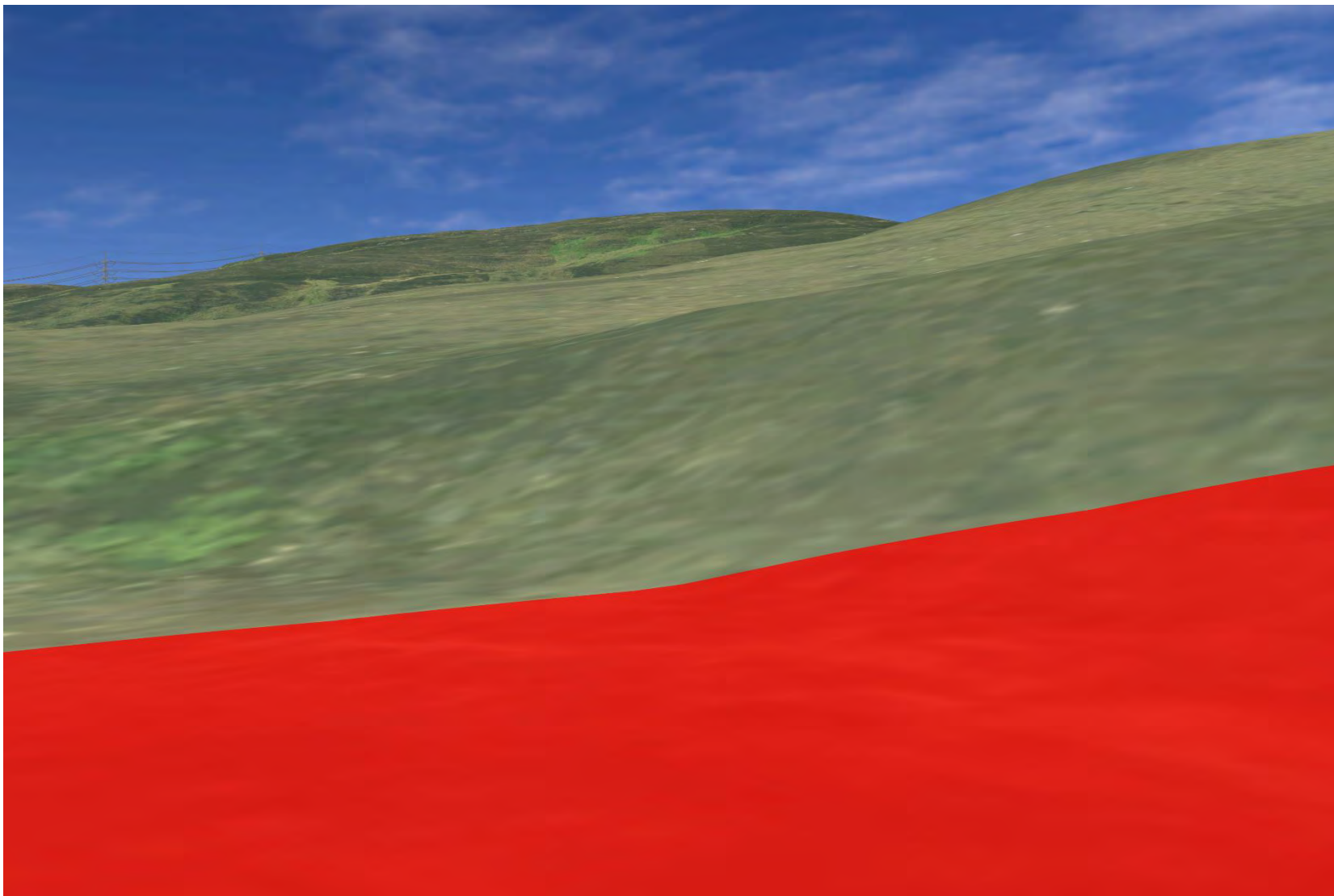
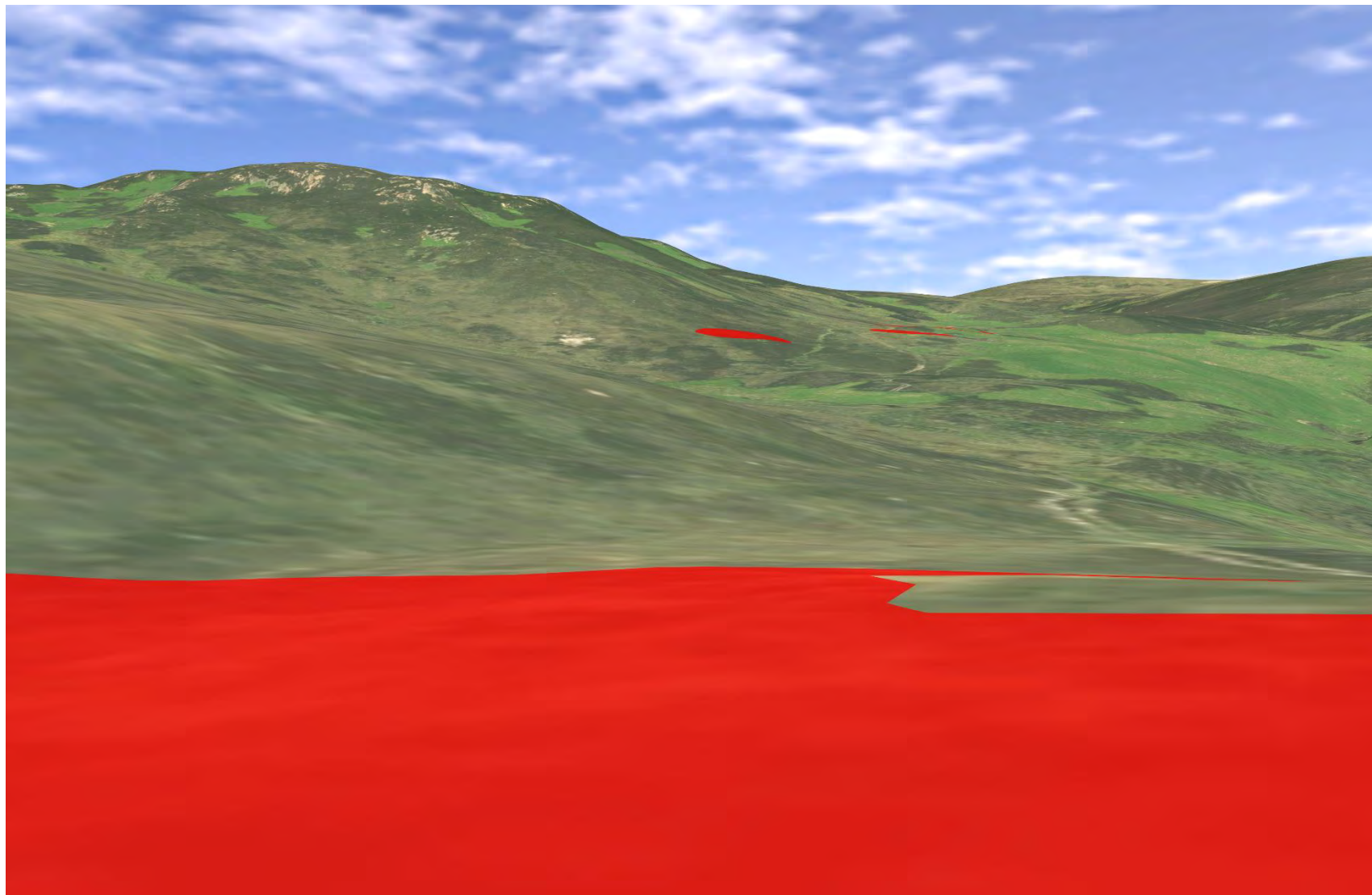


Plate 627 SM432 - CHVP\_111 - from asset towards SM1841, Proposed Development and Caen Burn (337°)





**Plate 628 SM13647 - CHVP\_112 - from asset towards Proposed Development (45°)**

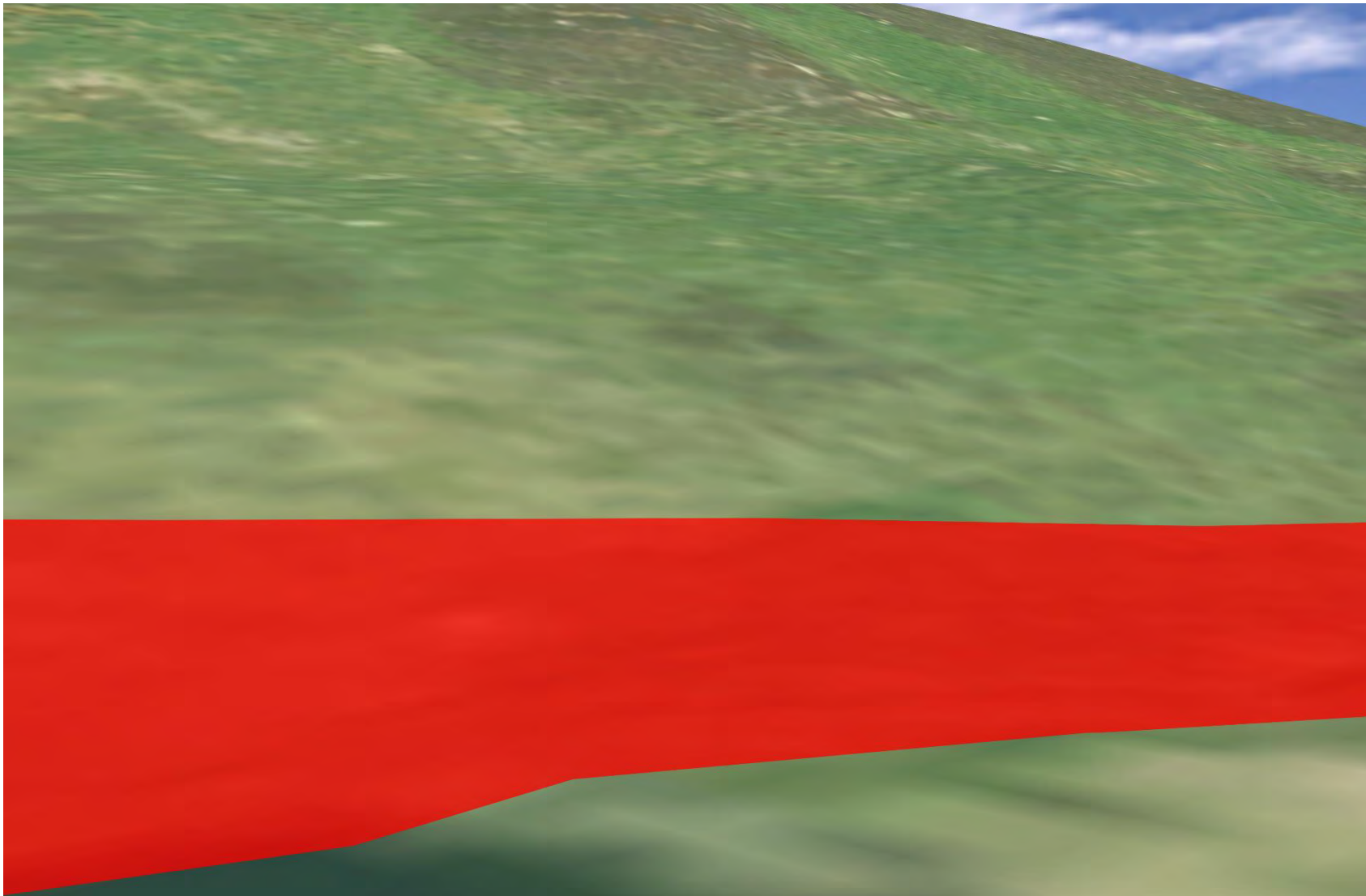
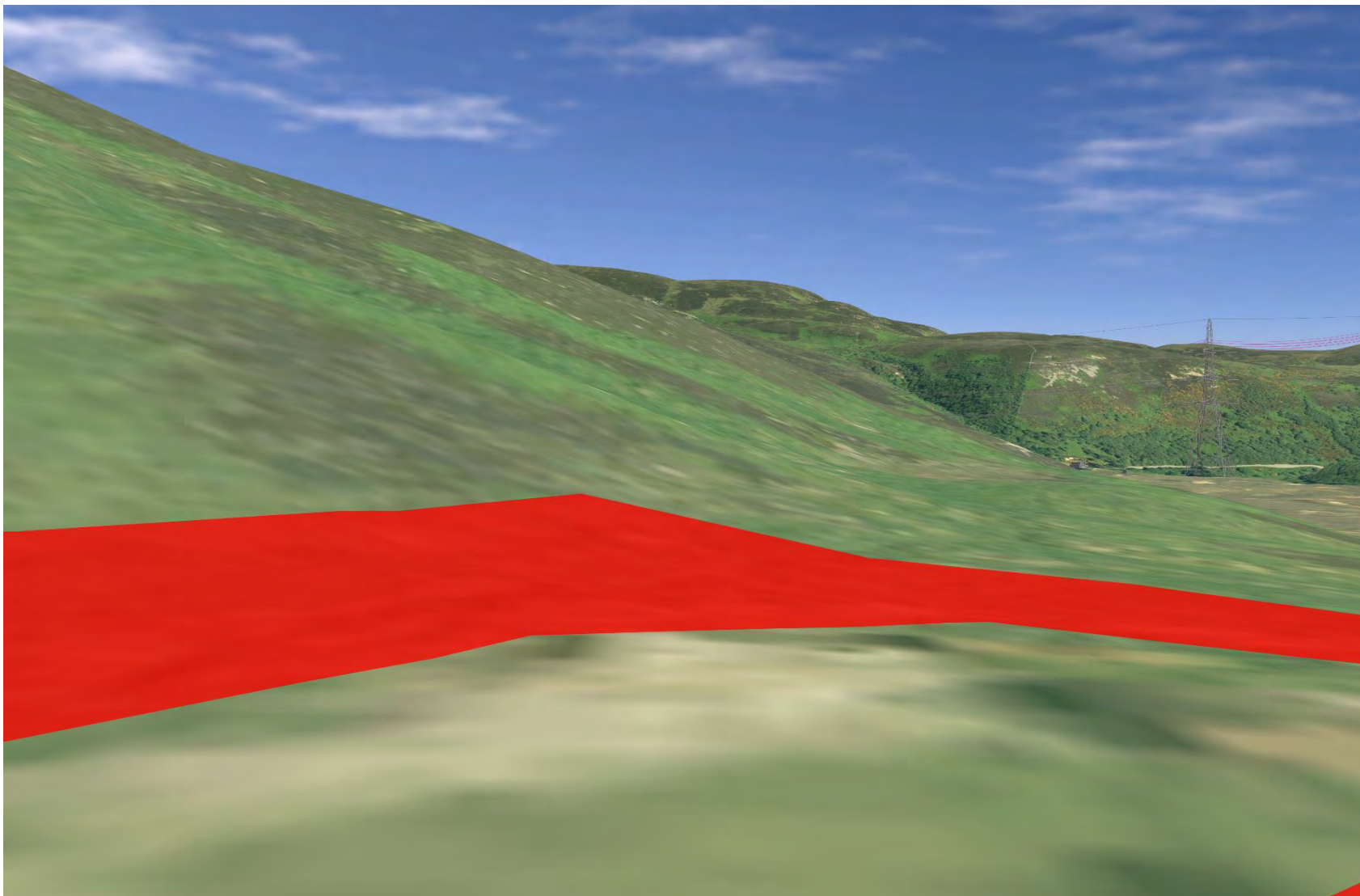


Plate 629 SM13647 - CHVP\_112 - from asset towards SM1770, River Helmsdale and Proposed Development (90°)





**Plate 630 SM13647 - CHVP\_112 - from asset towards Proposed Development and River Helmsdale (135°)**

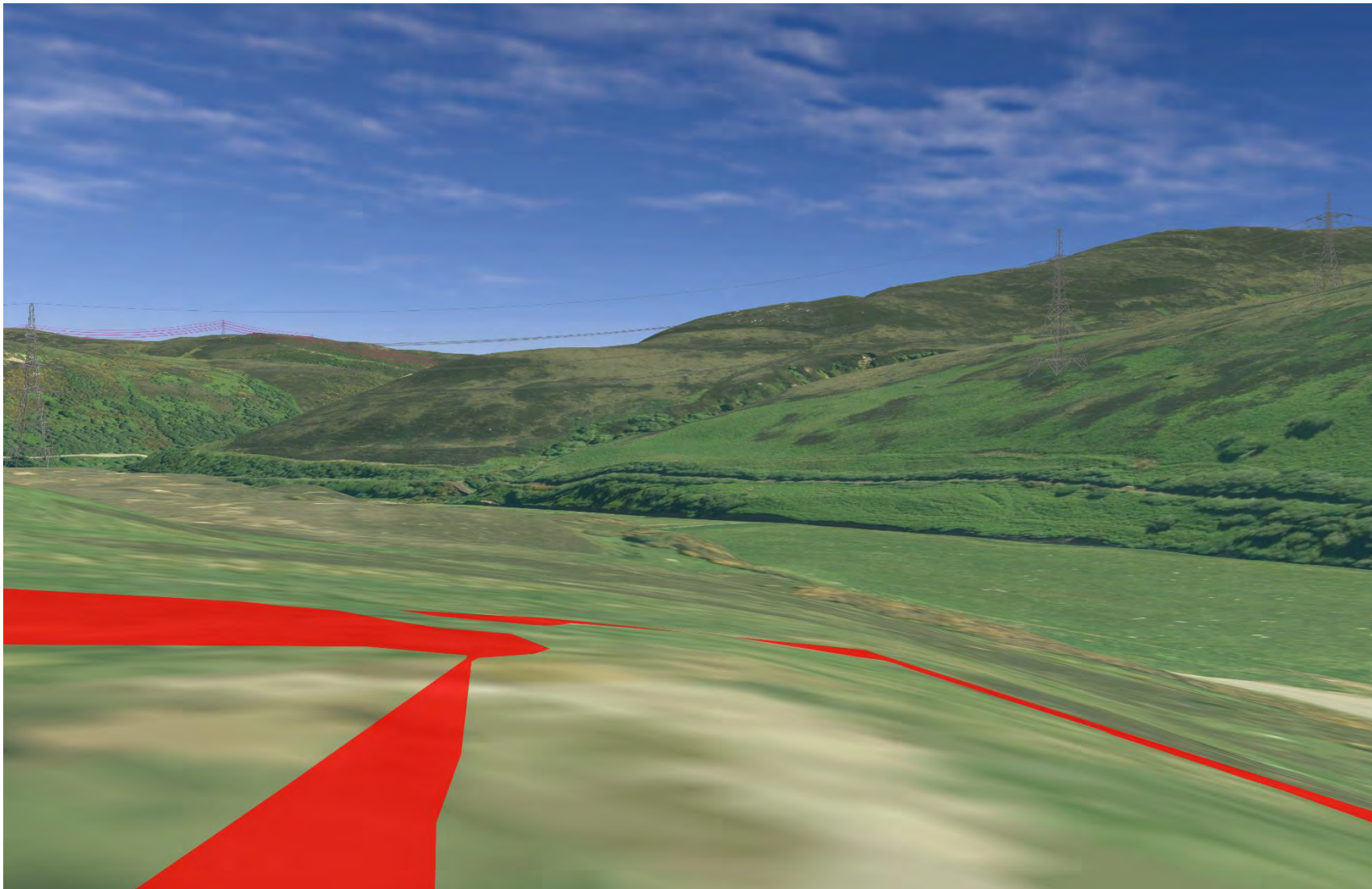


Plate 631 SM13647 - CHVP\_112 - from asset towards Proposed Development and River Helmsdale (180°)

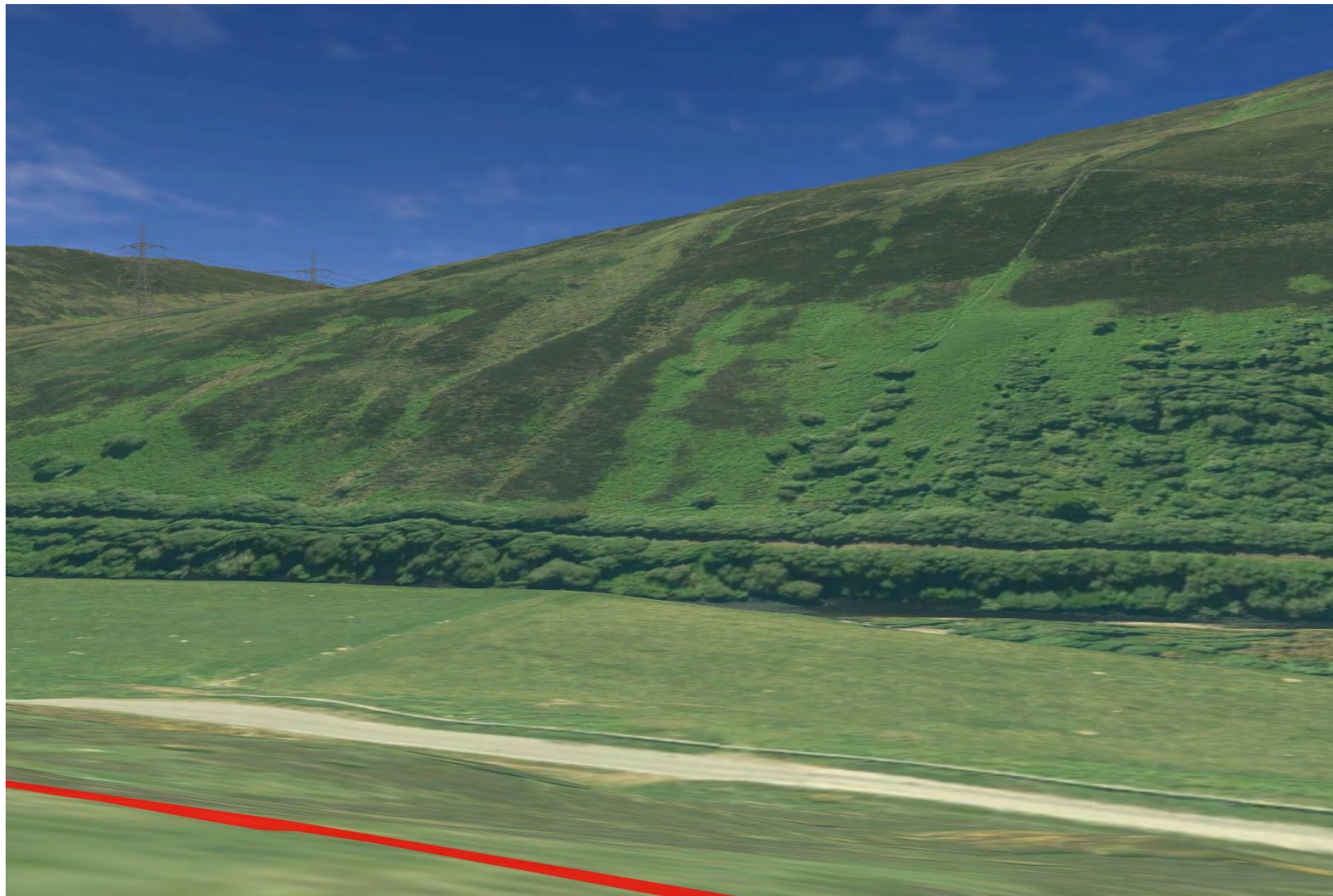


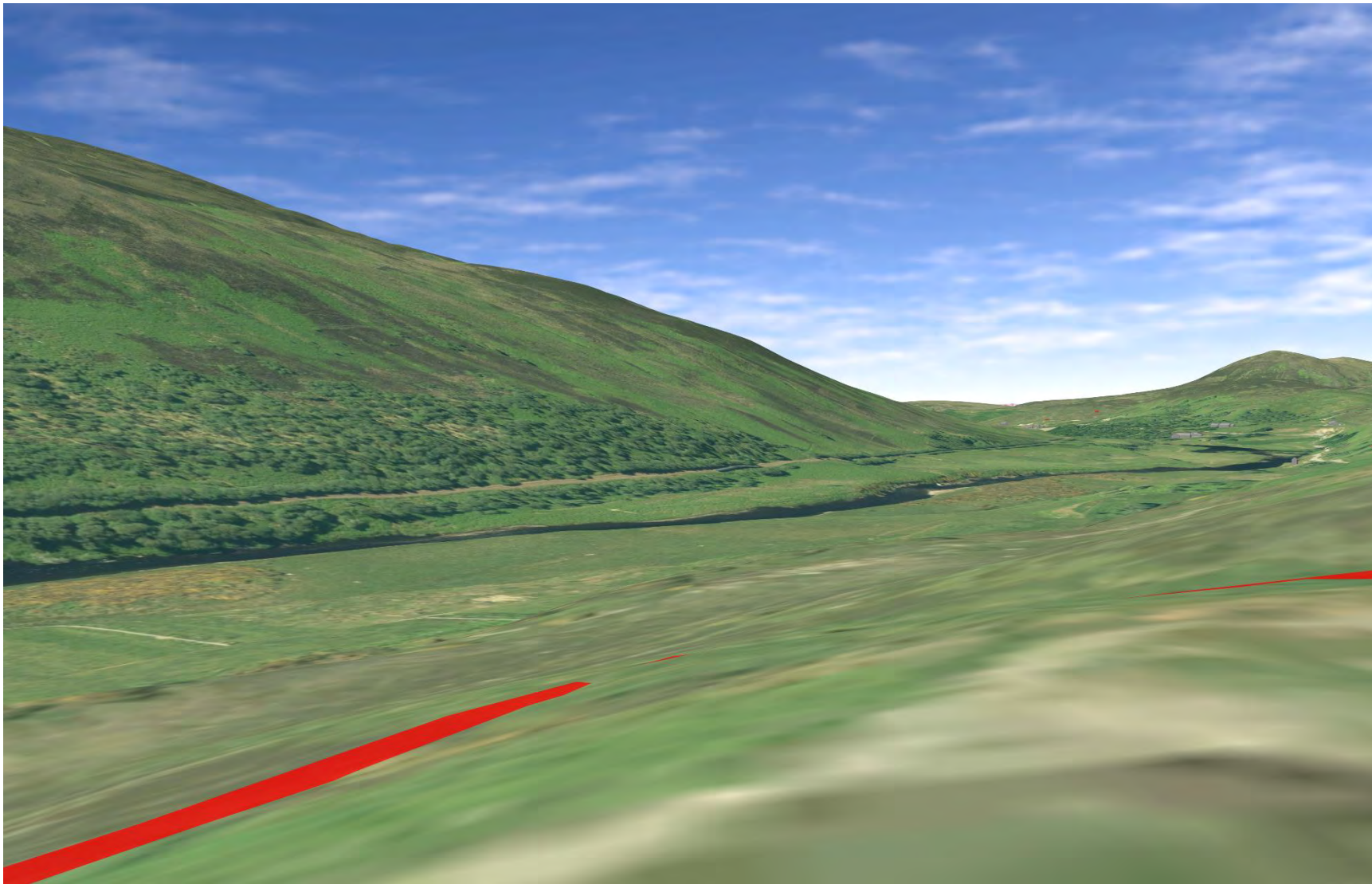


Plate 632 SM13647 - CHVP\_112 - from asset towards Proposed Development and River Helmsdale (225°)

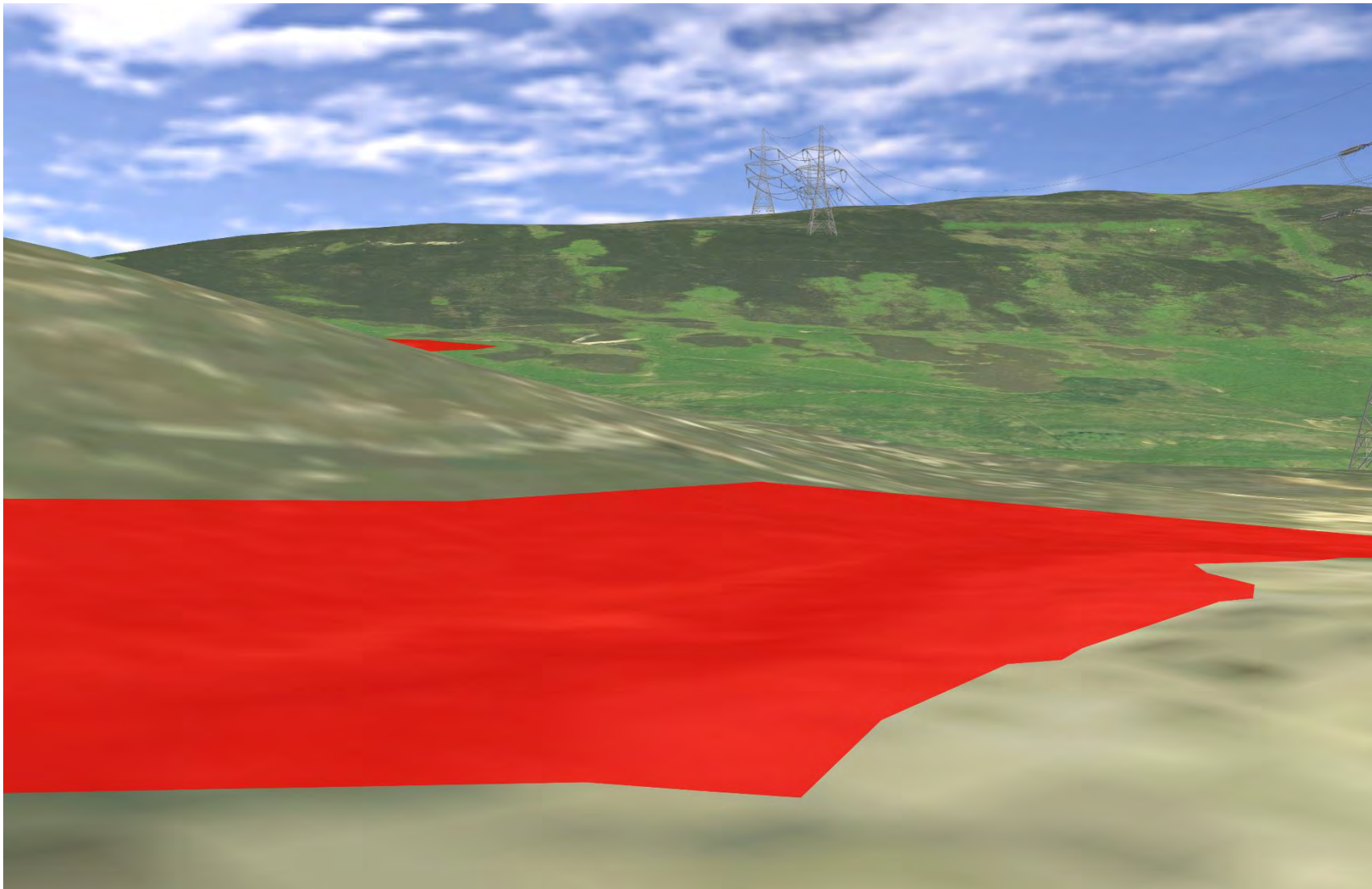




Plate 633 SM13647 - CHVP\_112 - from asset towards Proposed Development and River Helmsdale (270°)



**Plate 634 SM1770 - CHVP\_113 - from asset towards Proposed Development (45°)**





**Plate 635 SM1770 - CHVP\_113 - from asset towards Proposed Development (90°)**

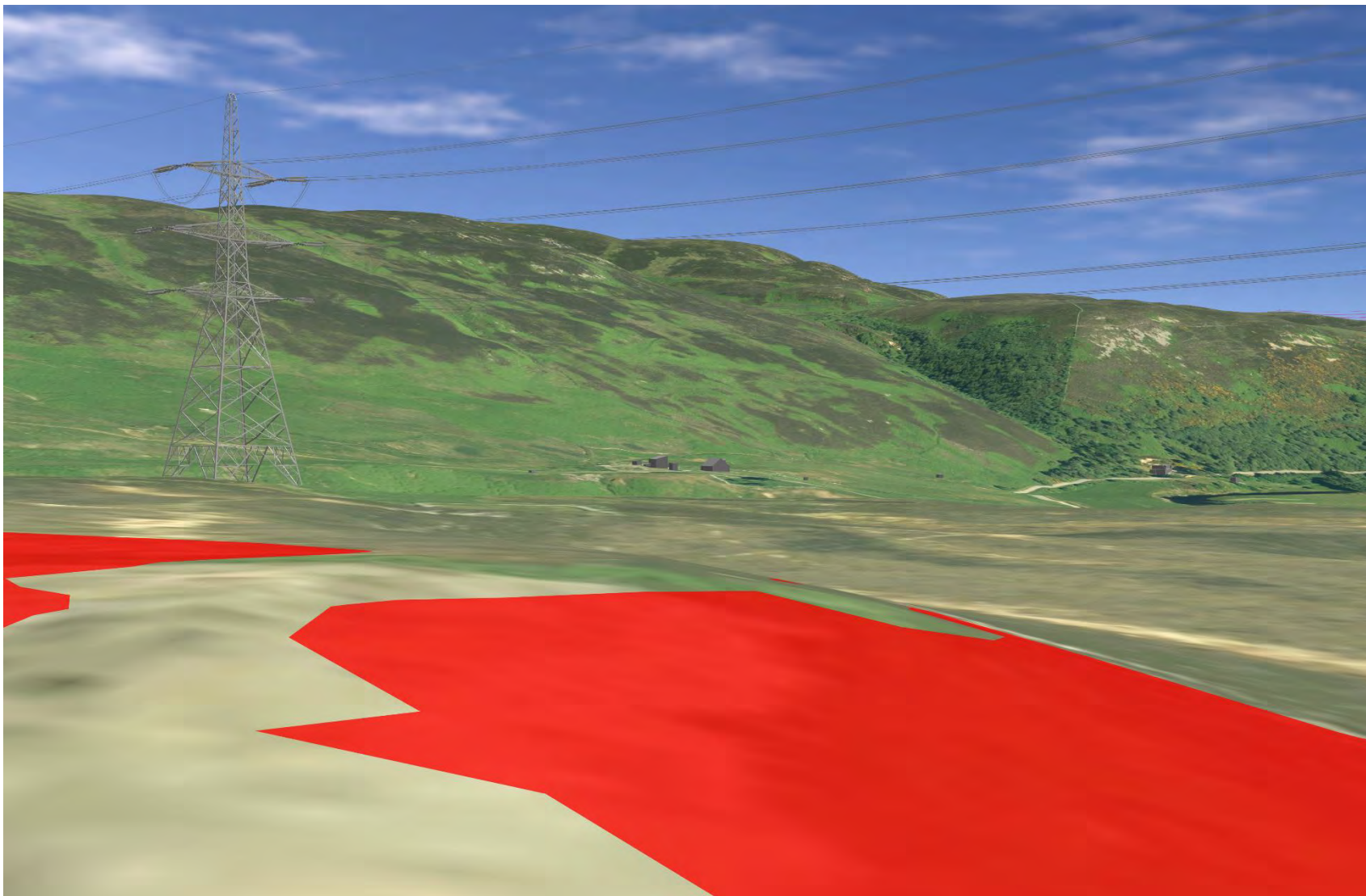


Plate 636 SM1770 - CHVP\_113 - from asset towards Proposed Development and River Helmsdale (135°)

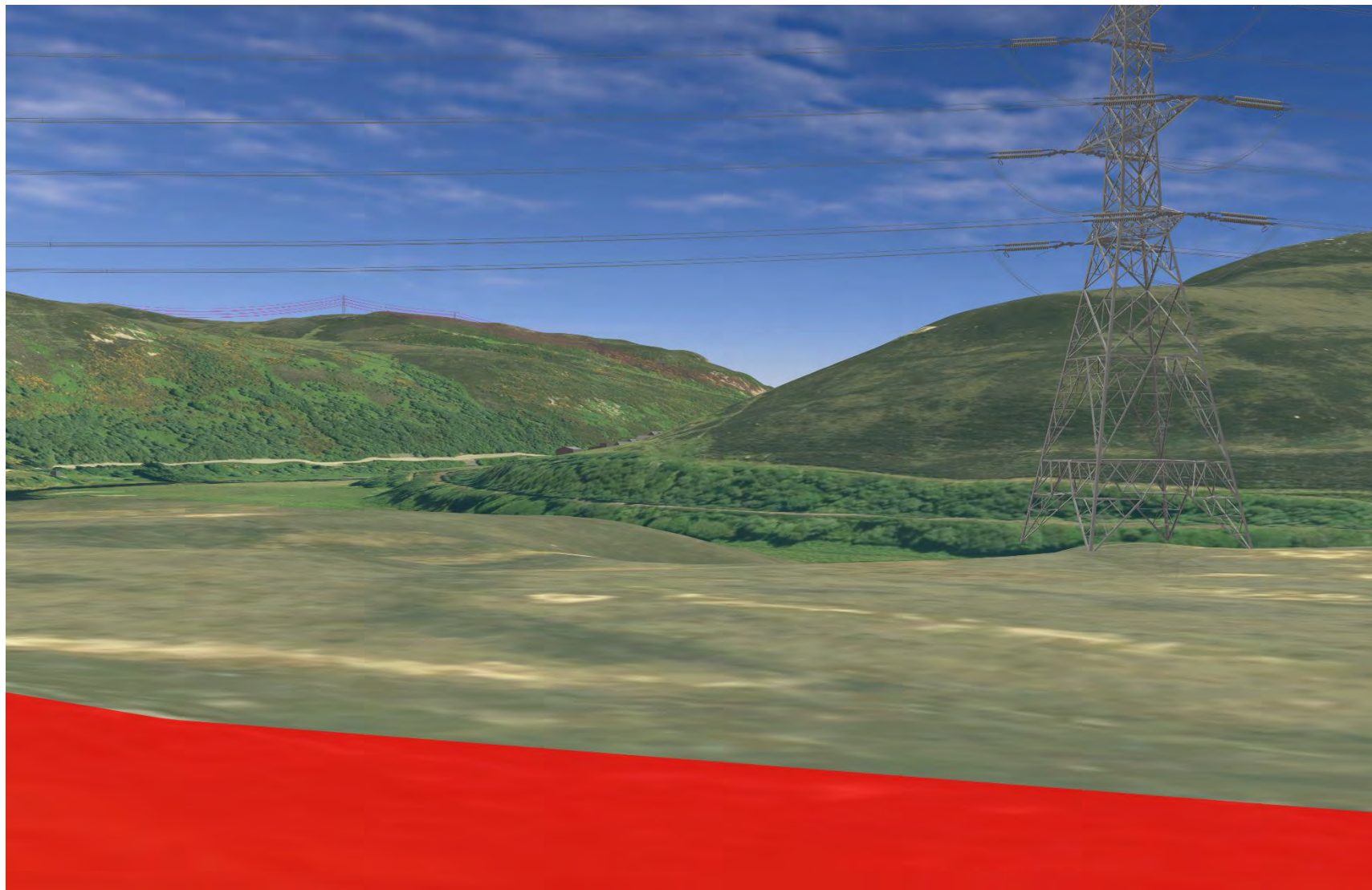




Plate 637 SM1770 - CHVP\_113 - from asset towards Proposed Development and River Helmsdale (180°)

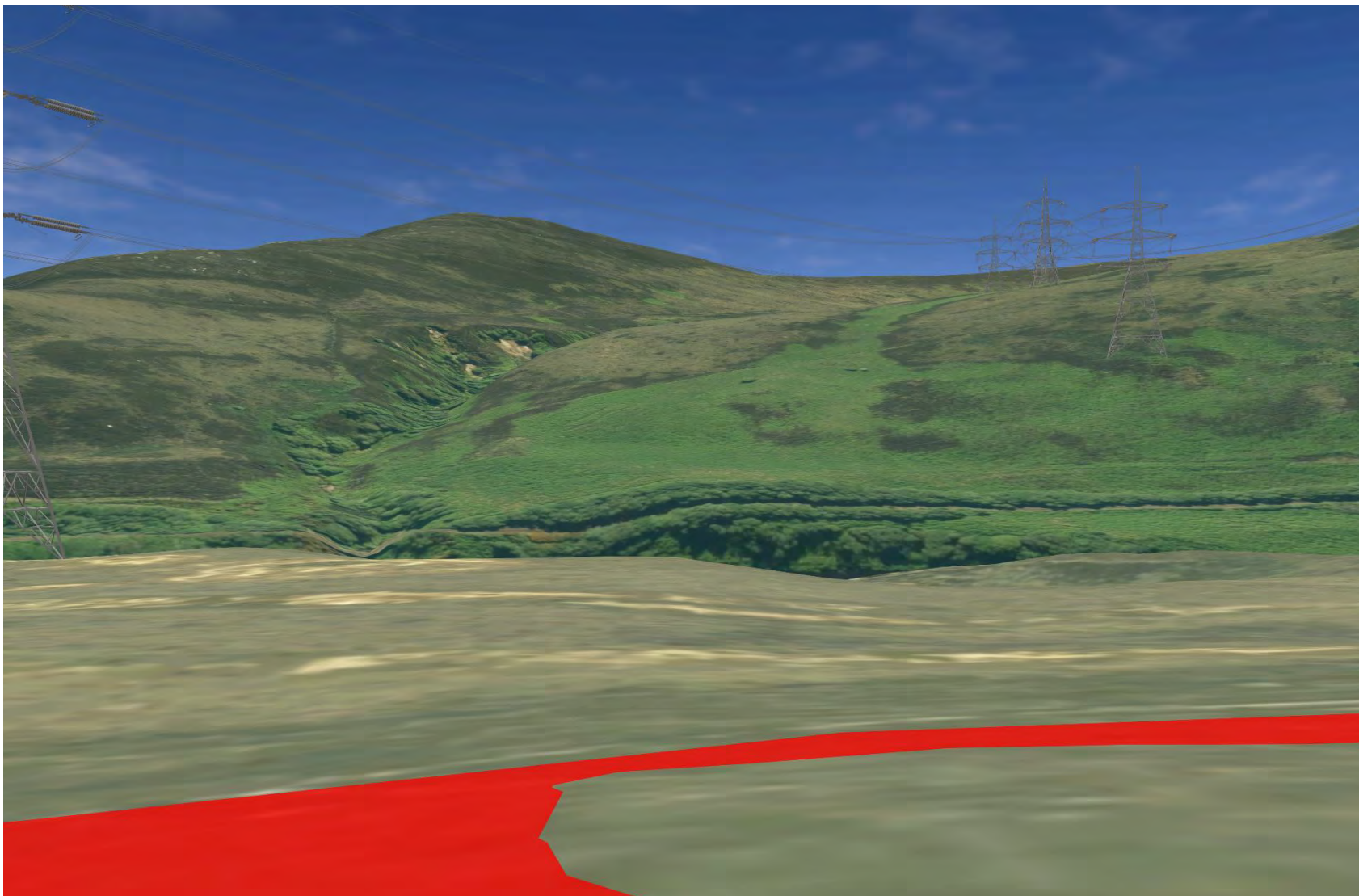


Plate 638 SM1770 - CHVP\_113 - from asset towards Proposed Development and River Helmsdale (225°)

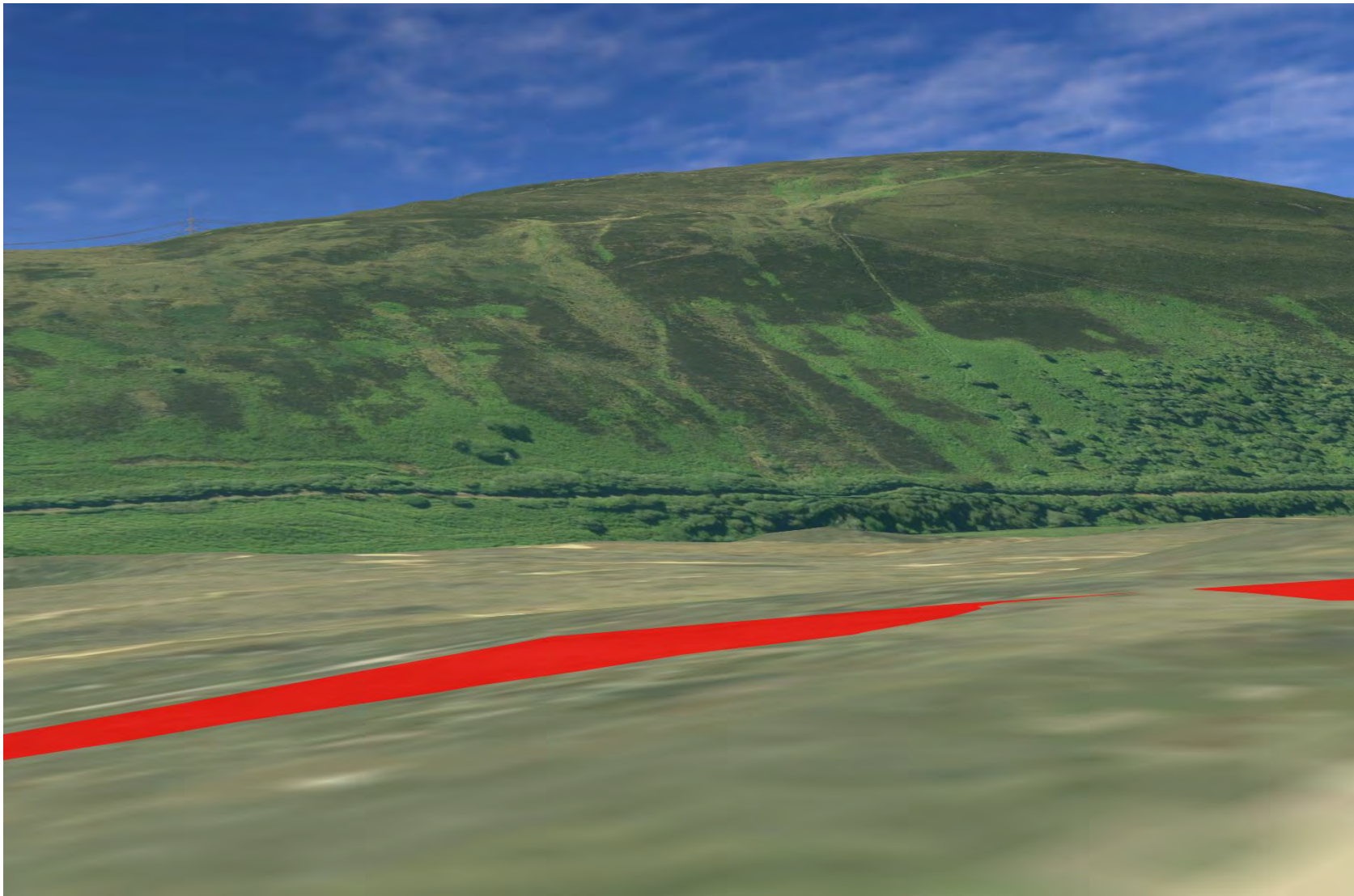
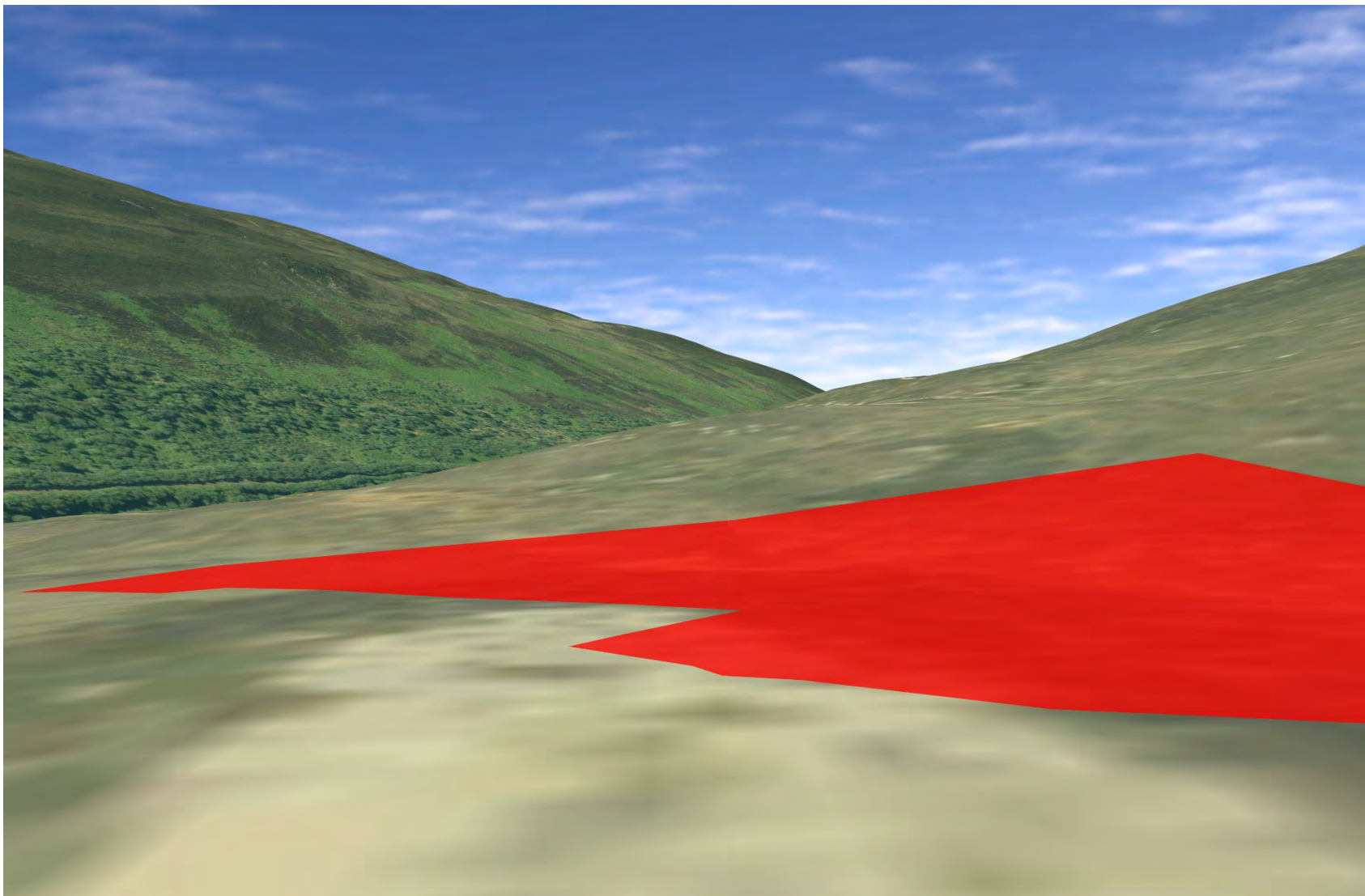




Plate 639 SM1770 - CHVP\_113 - from asset towards SM13647 (270°)



**Plate 640 LB7193 - CHVP\_114 - from asset towards River Helmsdale and Proposed Development (0°)**





**Plate 641 LB7193 - CHVP\_114 - from asset towards historical approach and Proposed Development (45°)**



Plate 642 LB7193 - CHVP\_114 - from asset towards historical approach and Proposed Development (225°)

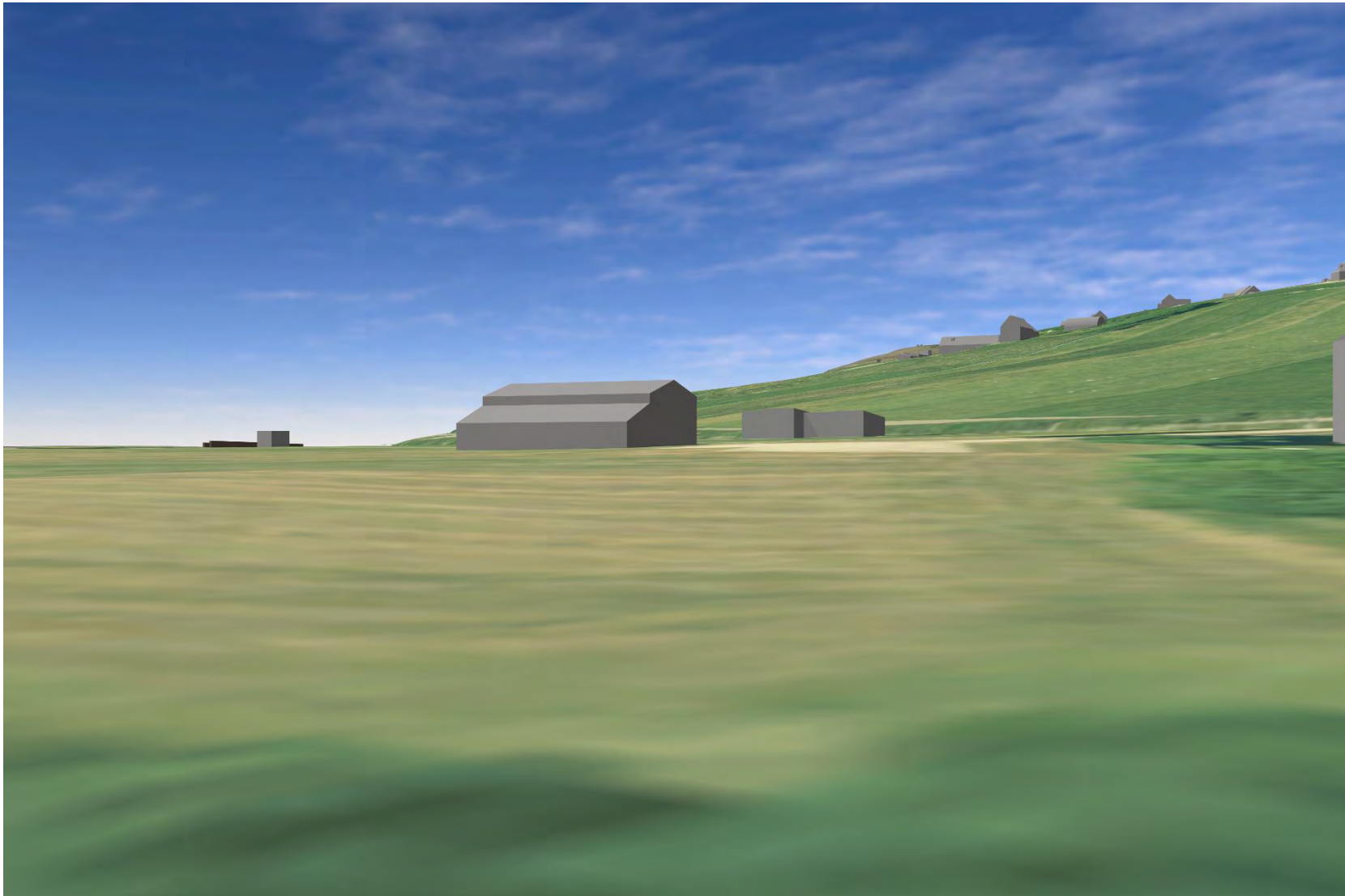




Plate 643 LB7193 - CHVP\_114 - from asset towards historical approach and Proposed Development (270°)

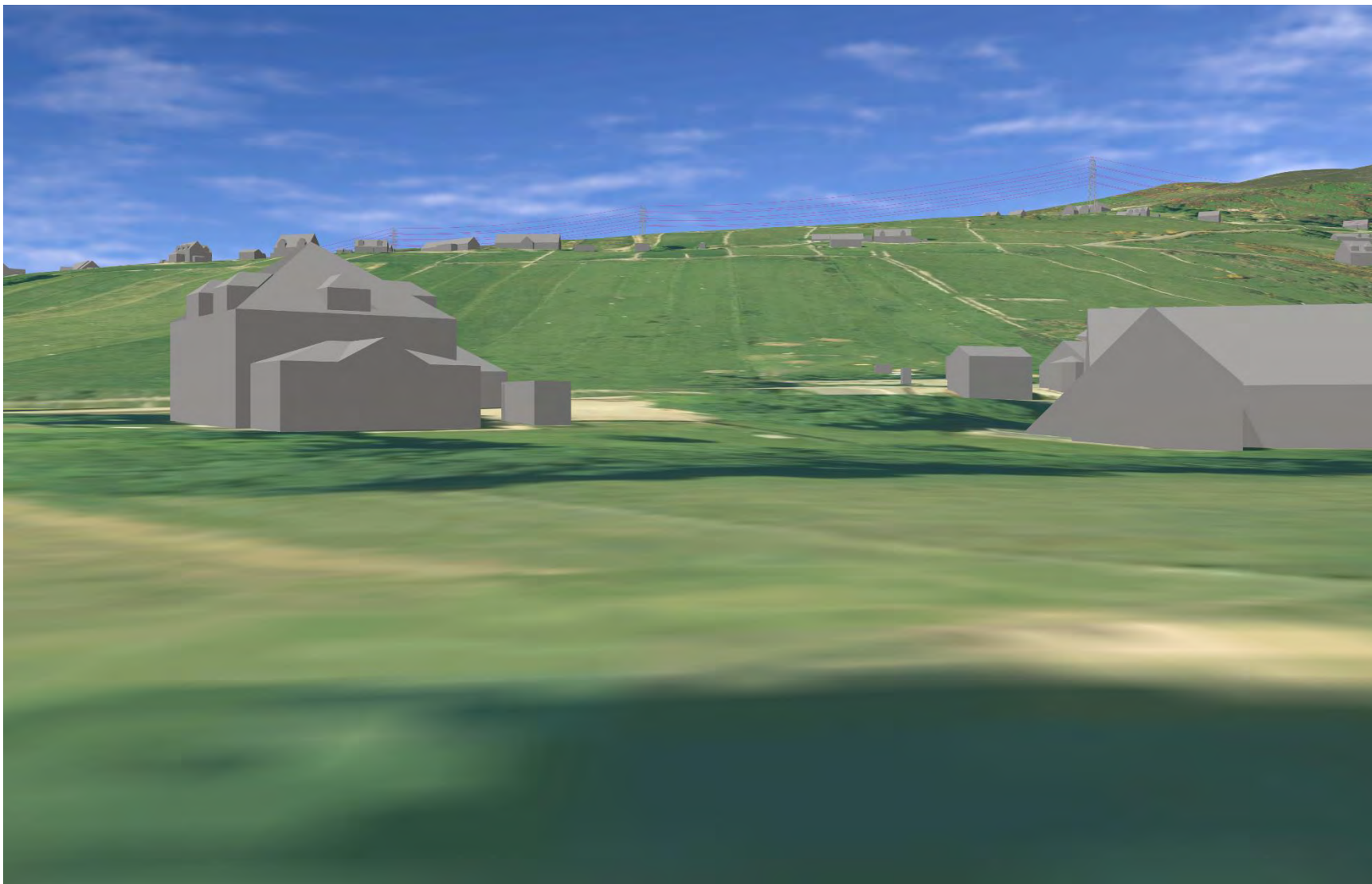


Plate 644 LB7193 - CHVP\_114 - from asset towards Proposed Development and River Helmsdale (315°)

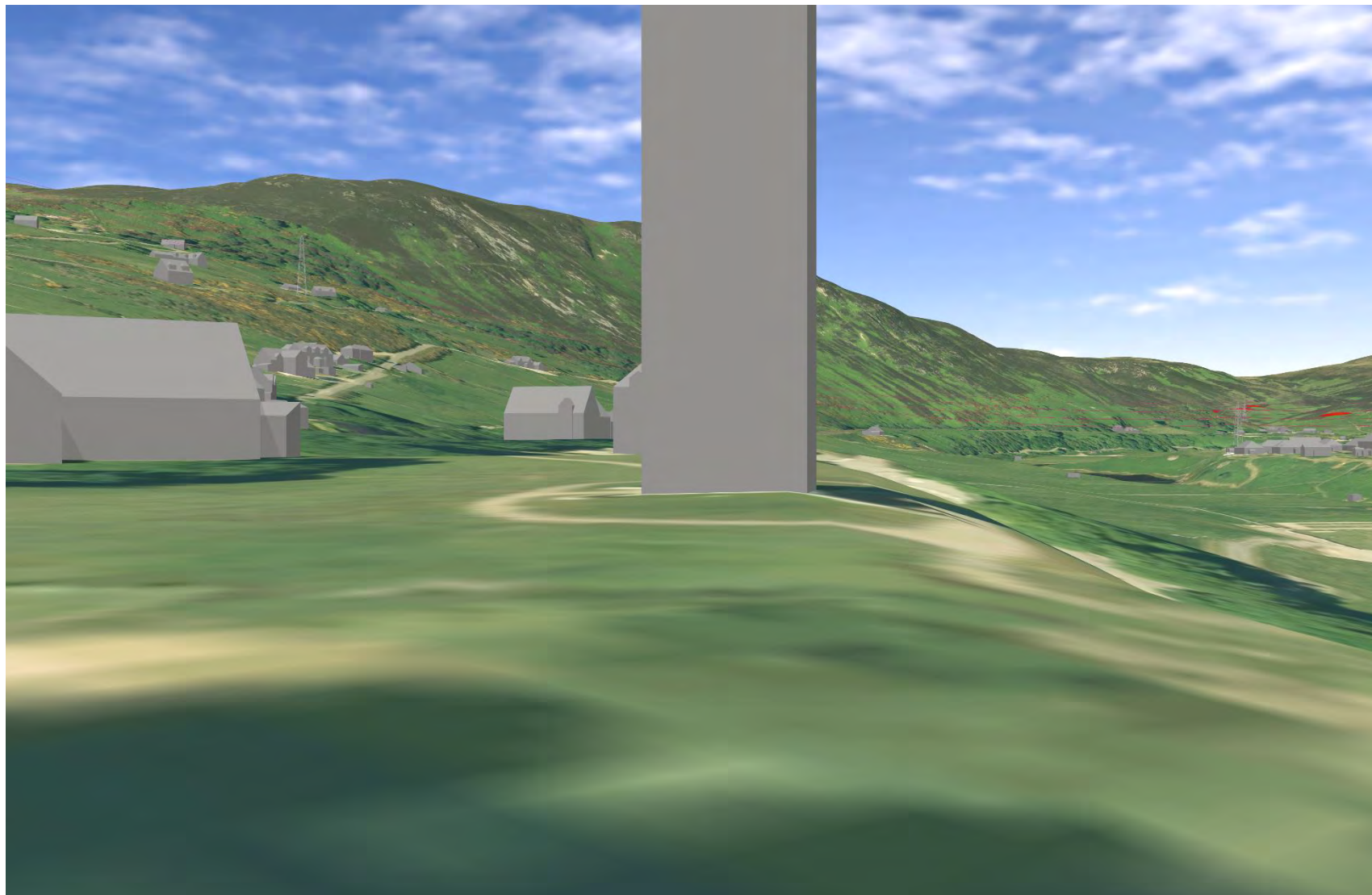




Plate 645 LB7193 - CHVP\_115 - from A9 Bridge towards LB7193 (315°)



**Plate 646 SM1778 - CHVP\_116 - from asset towards Proposed Development and Loth Burn (45°)**

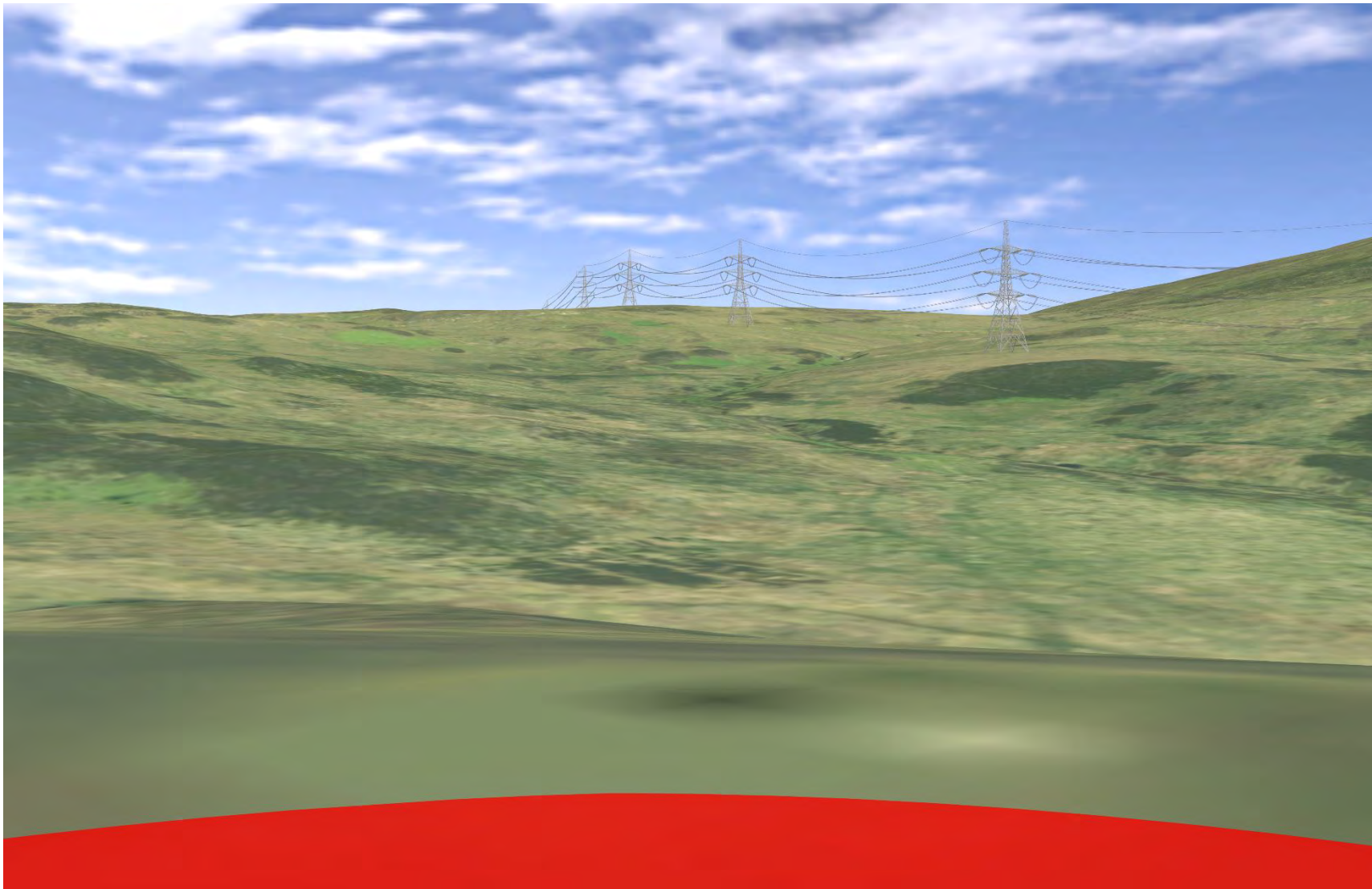
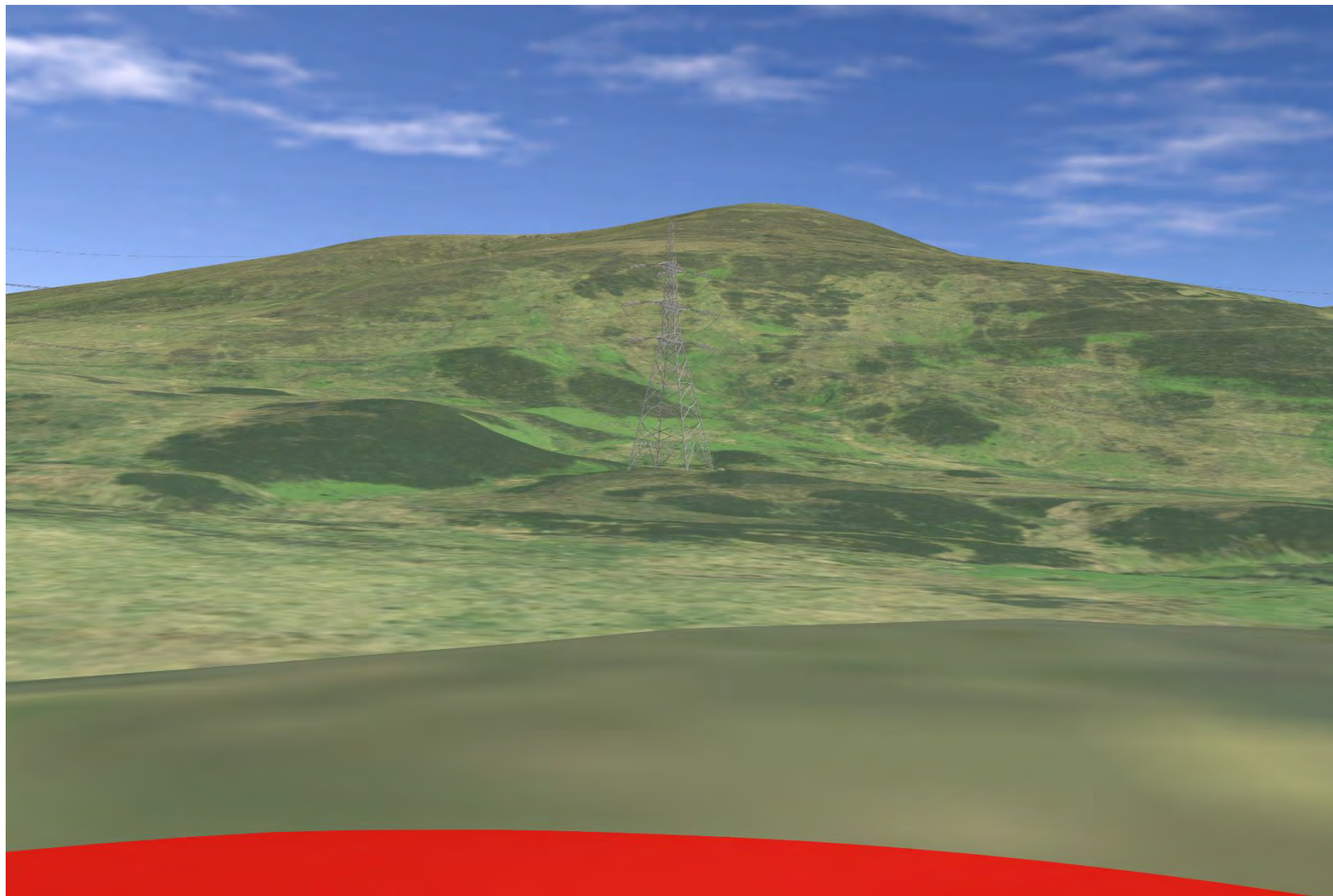
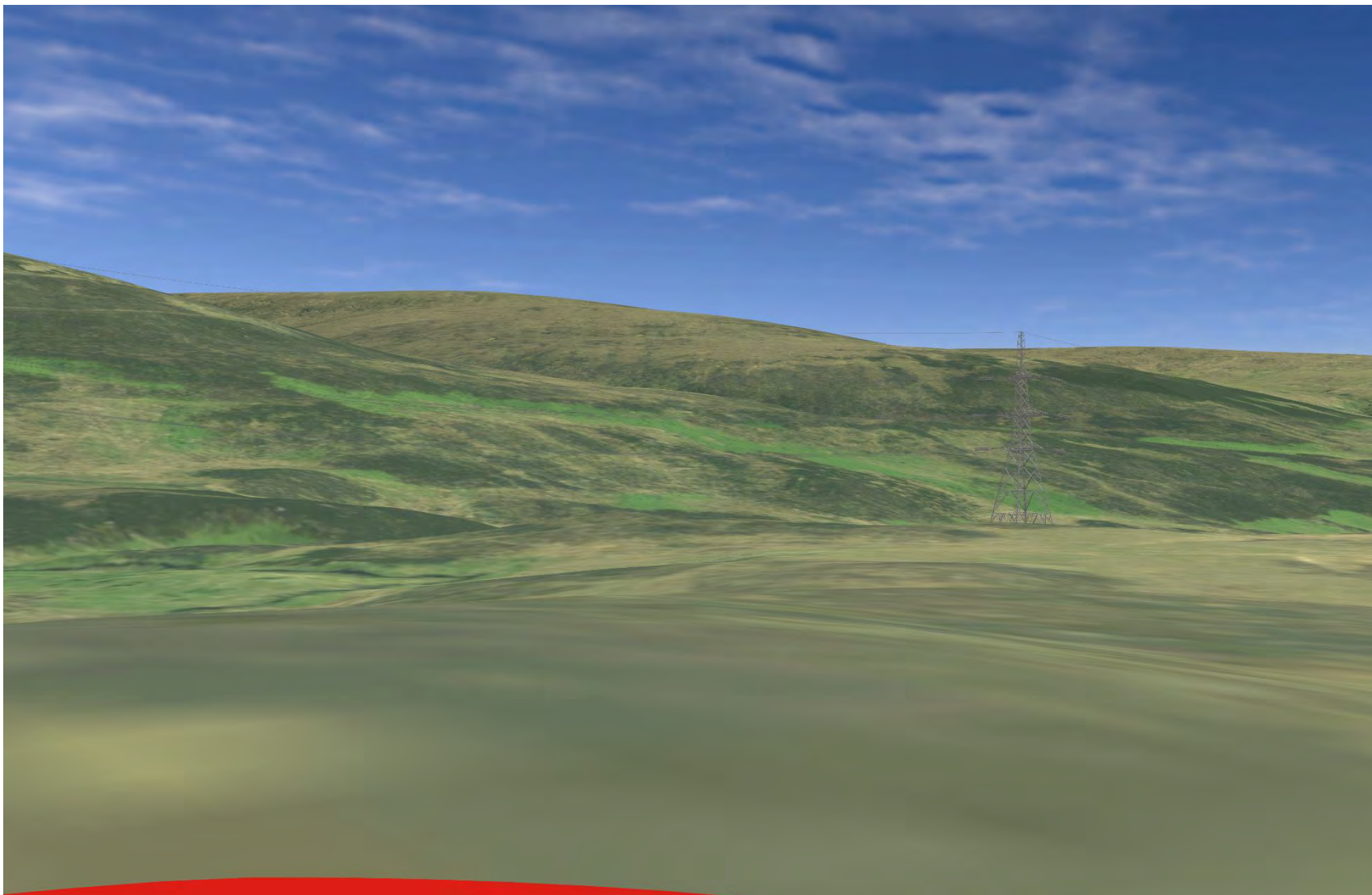




Plate 647 SM1778 - CHVP\_116 - from asset towards Proposed Development and Loth Burn (90°)



**Plate 648 SM1778 - CHVP\_116 - from asset towards Proposed Development and Loth Burn (135°)**





**Plate 649 SM1778 - CHVP\_116 - from asset towards SM1775, Proposed Development and Loth Burn. Potential views to ridgeline (180°)**

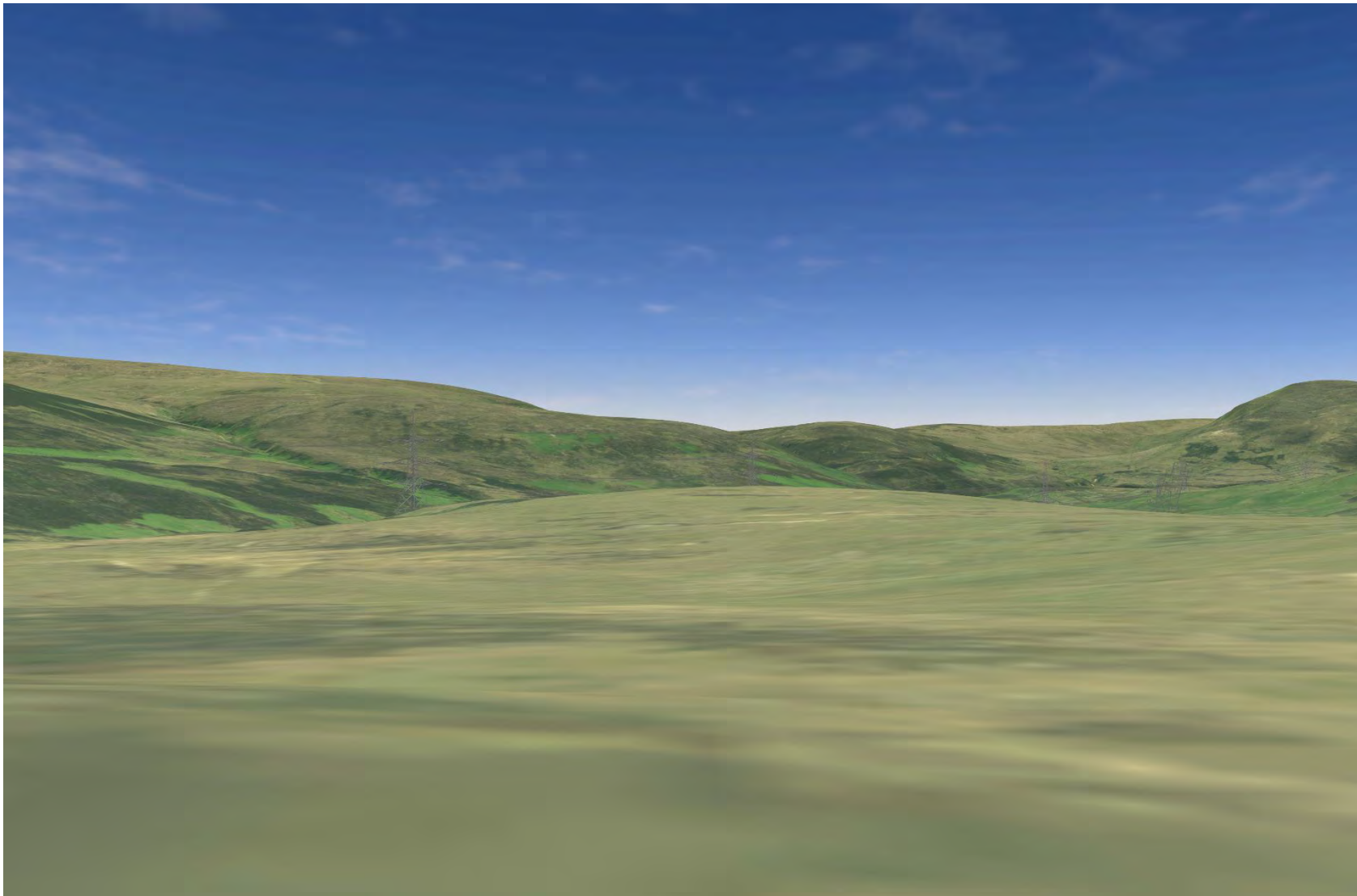
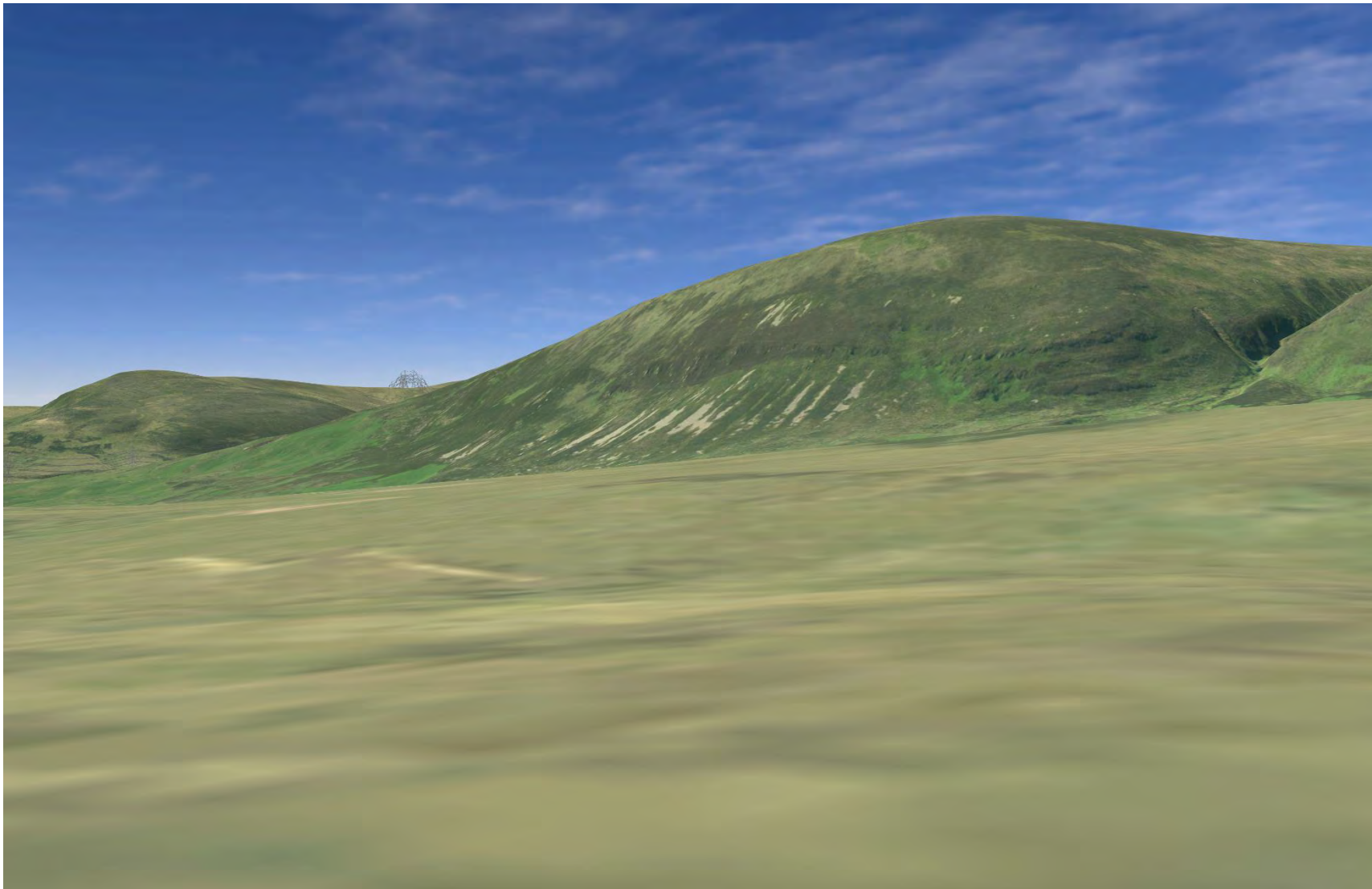
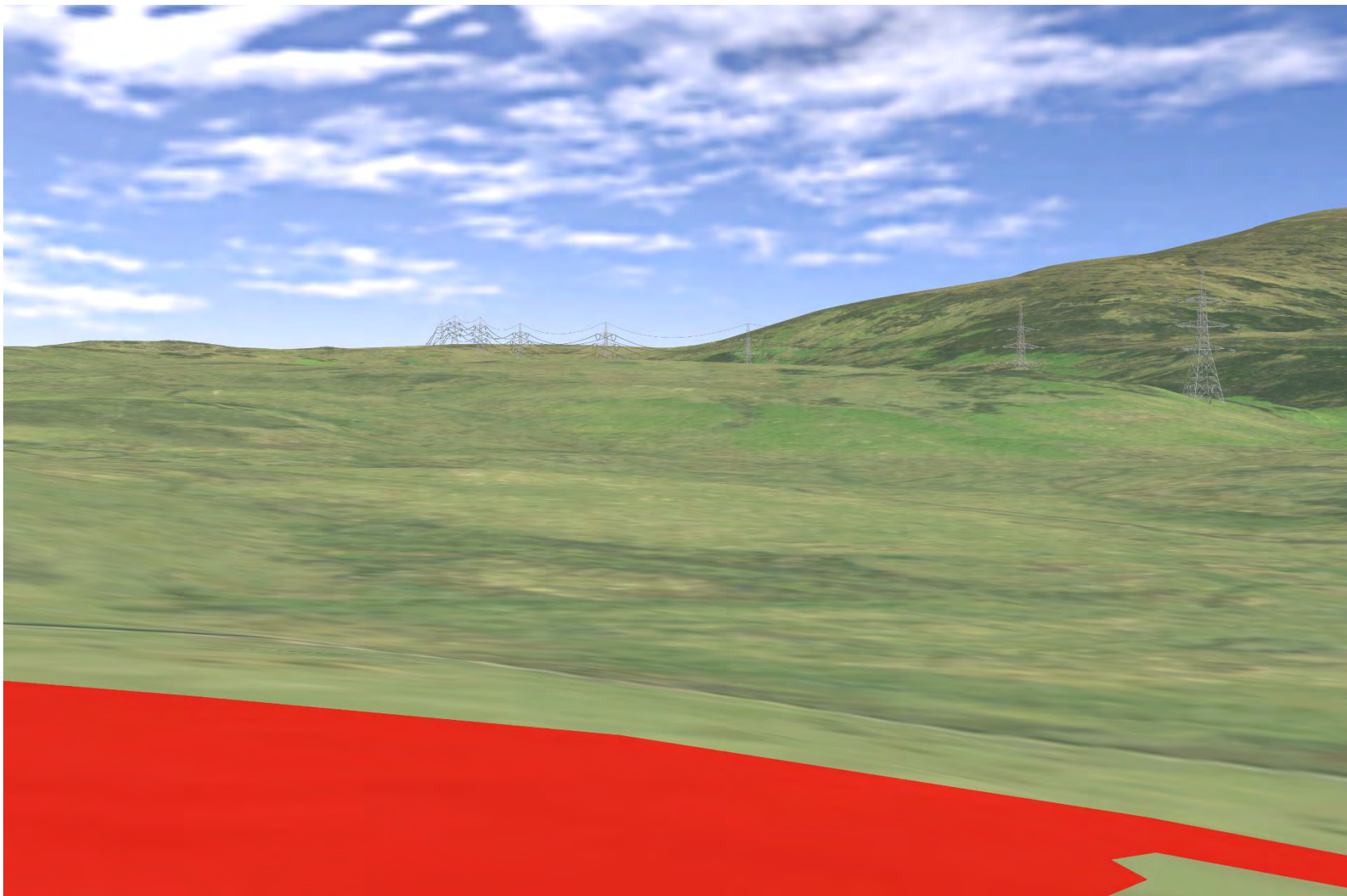


Plate 650 SM1778 - CHVP\_116 - from asset towards Proposed Development, small drainage and SM13627 (225°)





**Plate 651 SM13627 - CHVP\_117 - from asset towards SM1778, Loth Burn and Proposed Development (45°)**

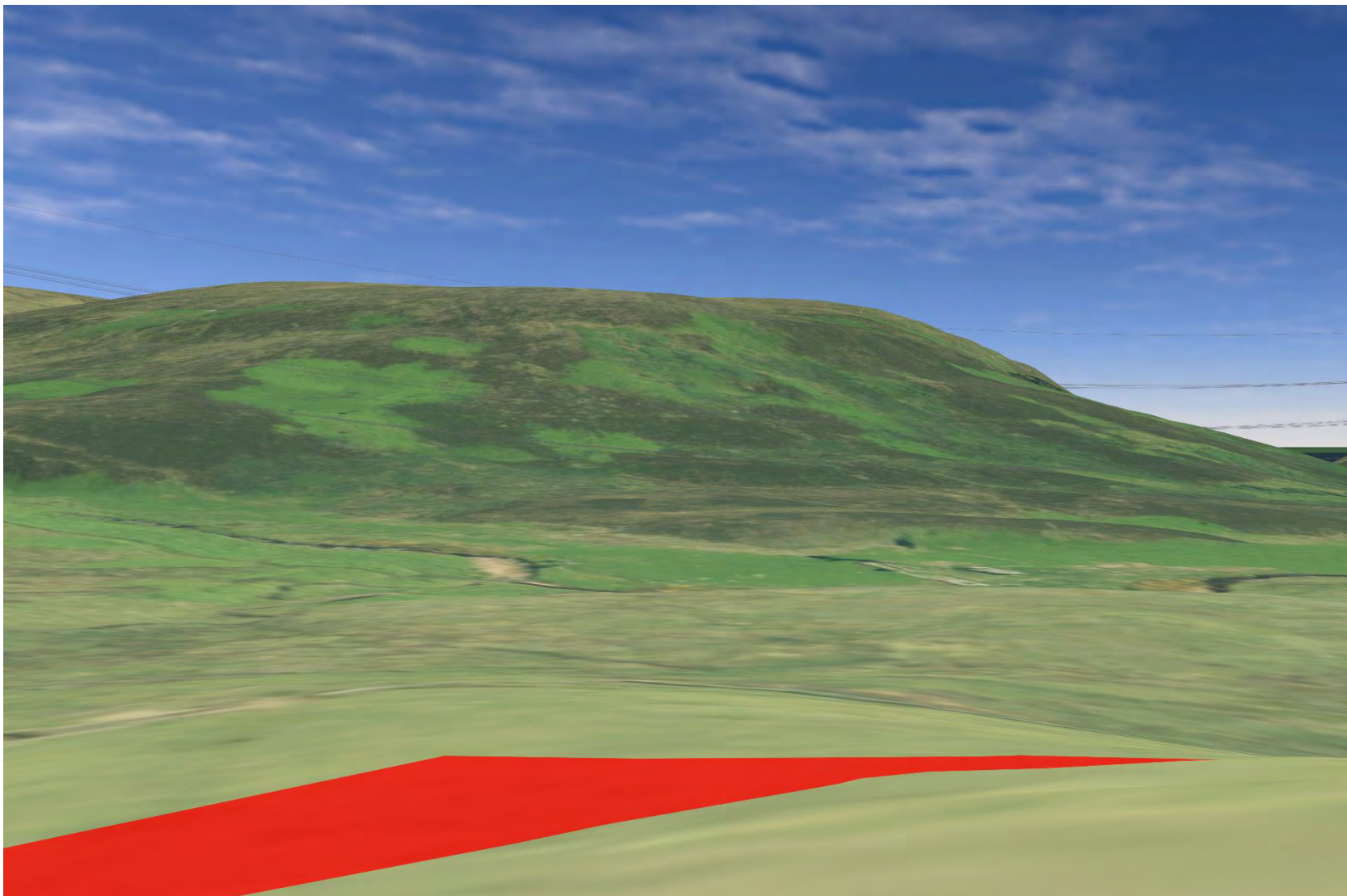


**Plate 652 SM13627 - CHVP\_117 - from asset towards Proposed Development and Loth Burn (90°)**

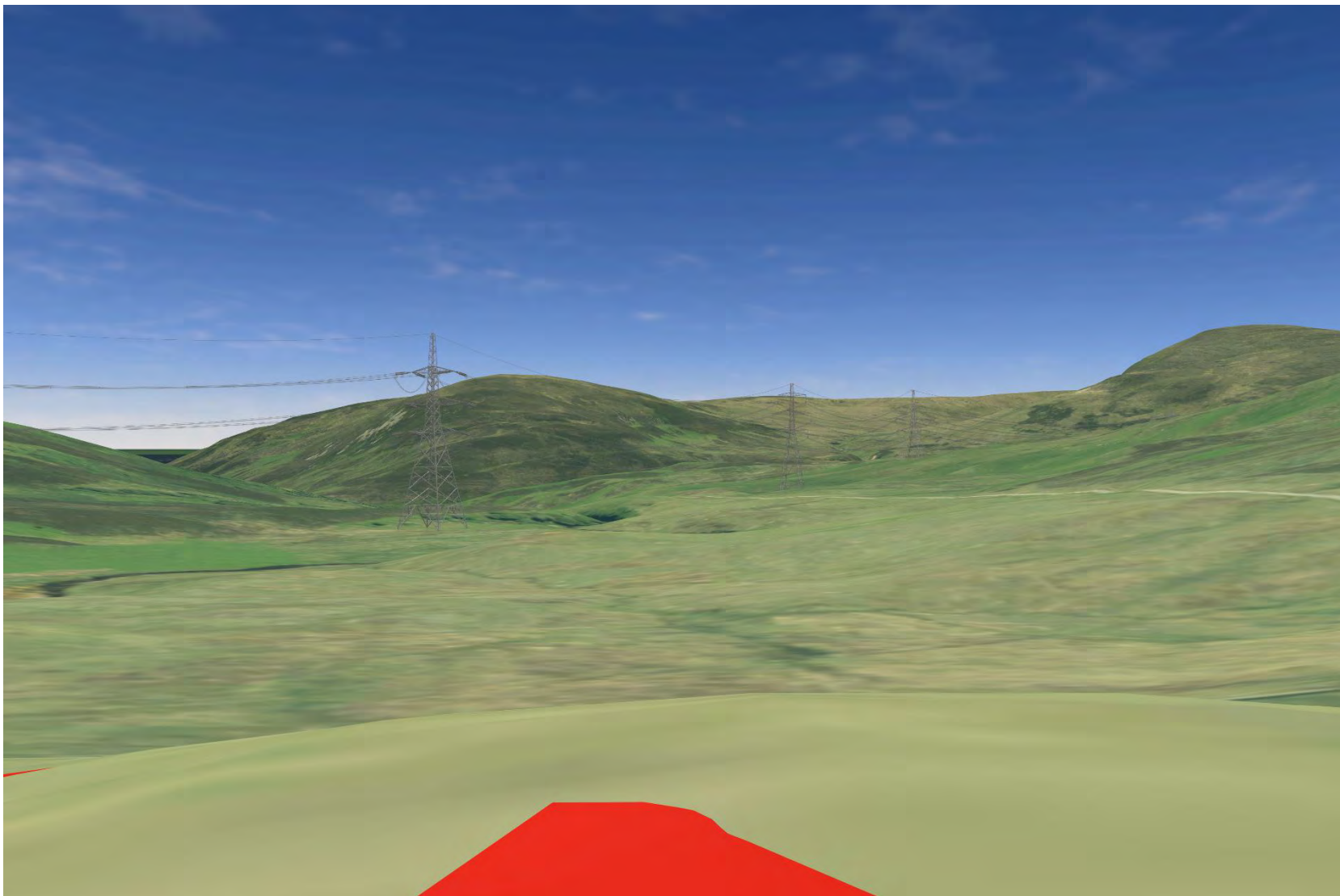




Plate 653 SM13627 - CHVP\_117 - from asset towards Proposed Development and Loth Burn (135°)

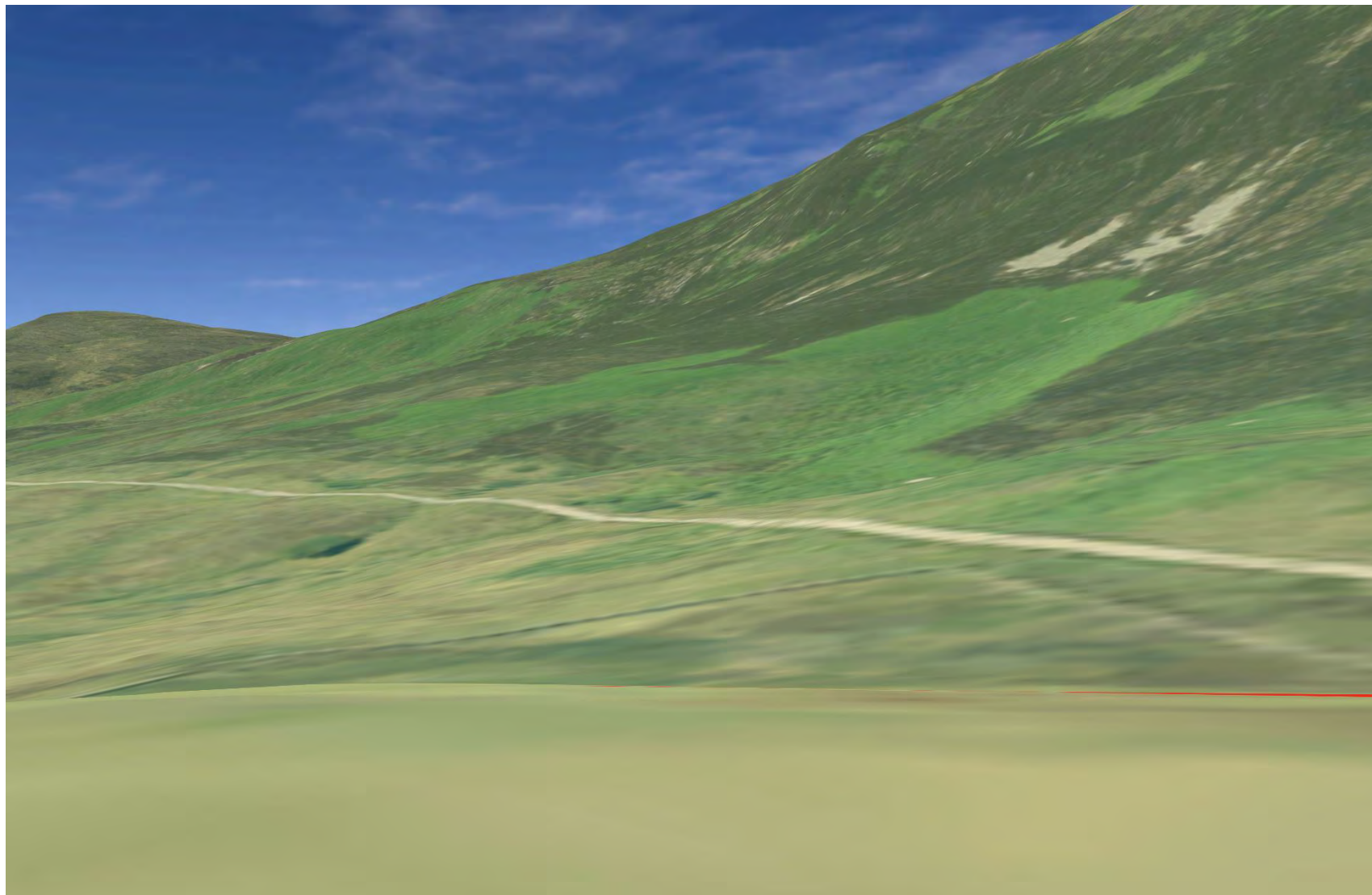


**Plate 654 SM13627 - CHVP\_117 - from asset towards Proposed Development and Loth Burn. Potential views to ridgeline (180°)**

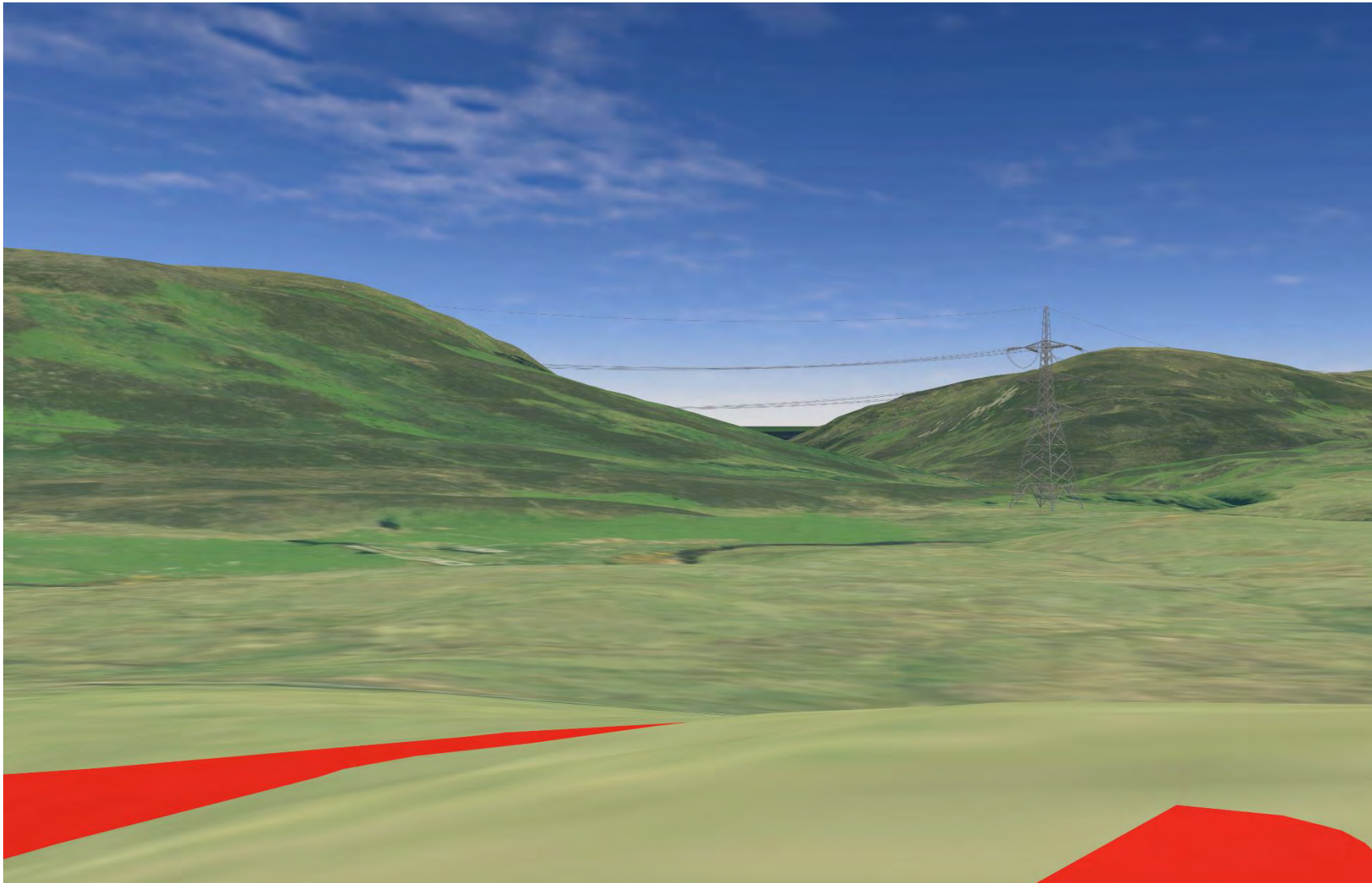




**Plate 655 SM13627 - CHVP\_117 - from asst towards Proposed Development (225°)**

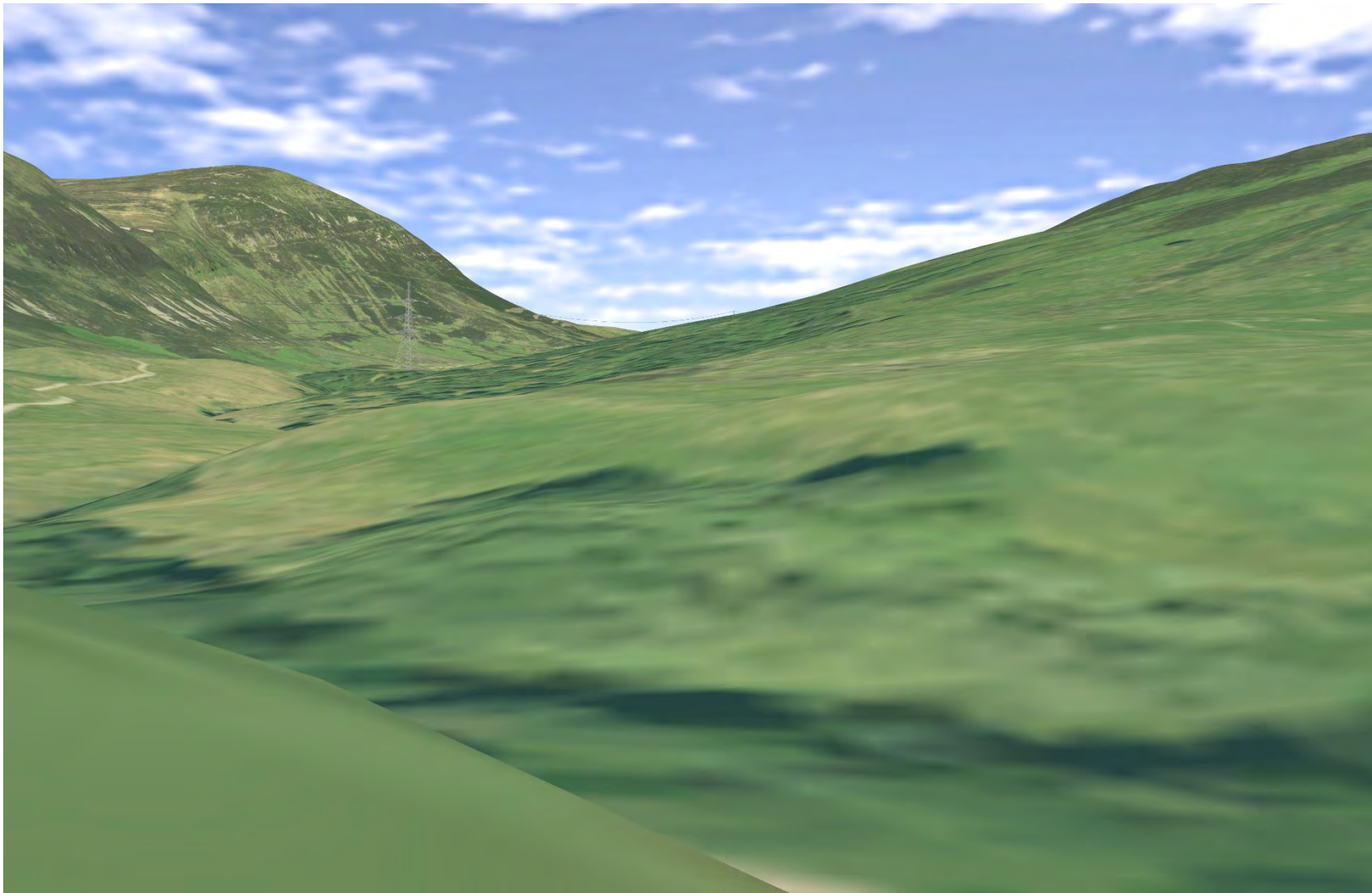


**Plate 656 SM13627 - CHVP\_117 - from asset towards SM1775 and Proposed Development (156°)**

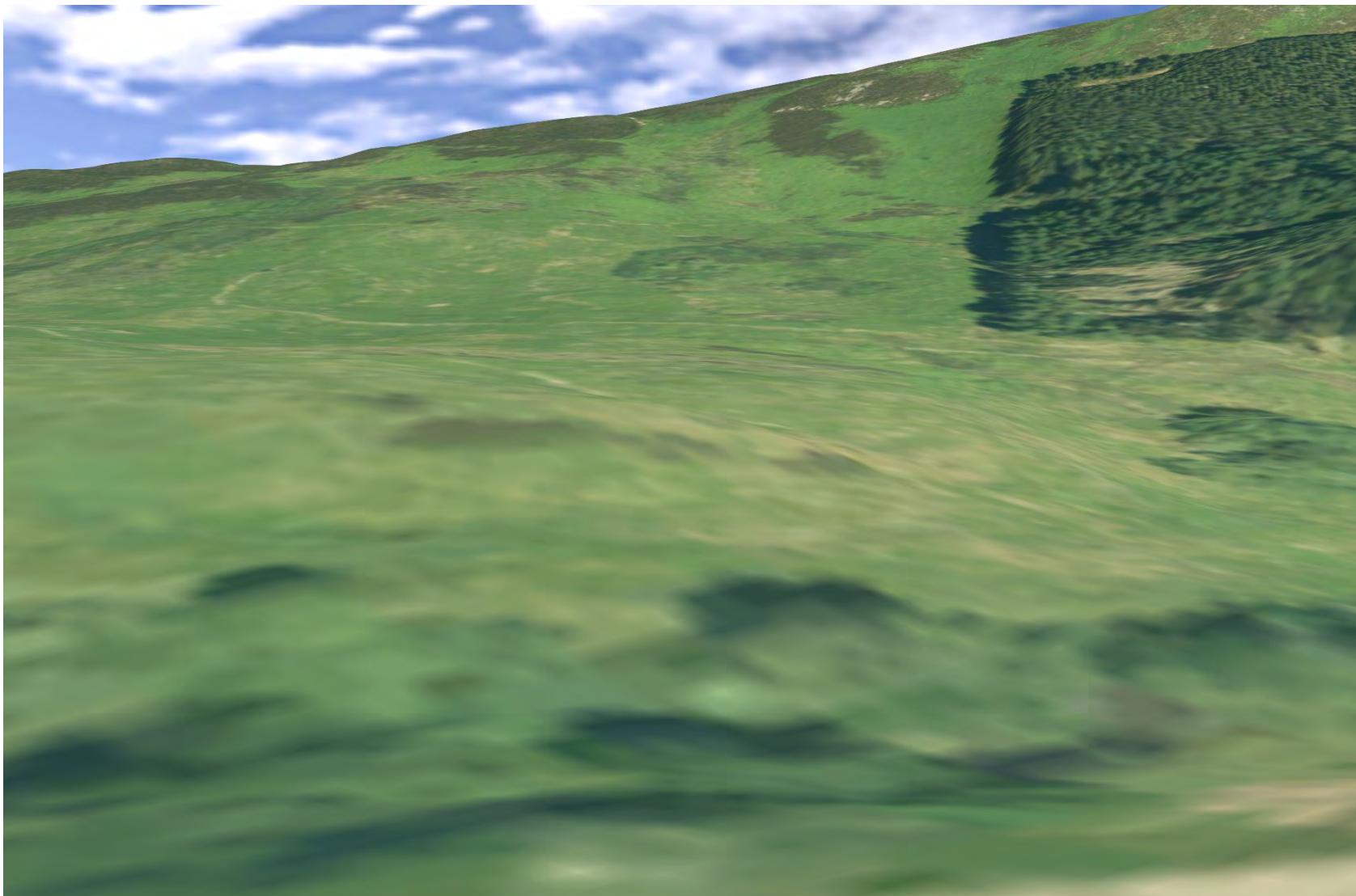




**Plate 657 SM1775 - CHVP\_118 - from asset towards SM1778, Loth Burn and Proposed Development (0°)**

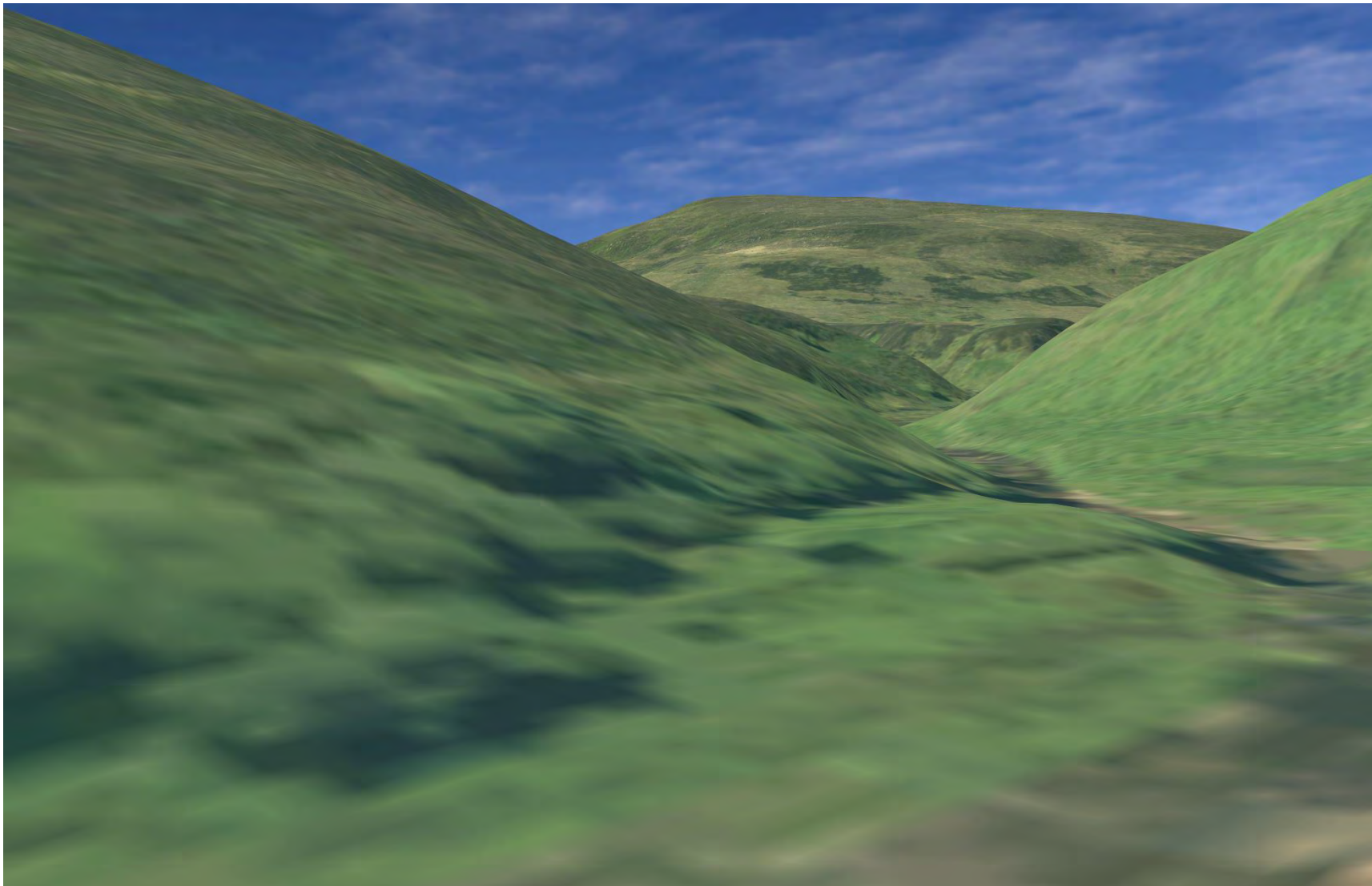


**Plate 658 SM1775 - CHVP\_118 - from asset towards Proposed Development and Loth Burn (45°)**

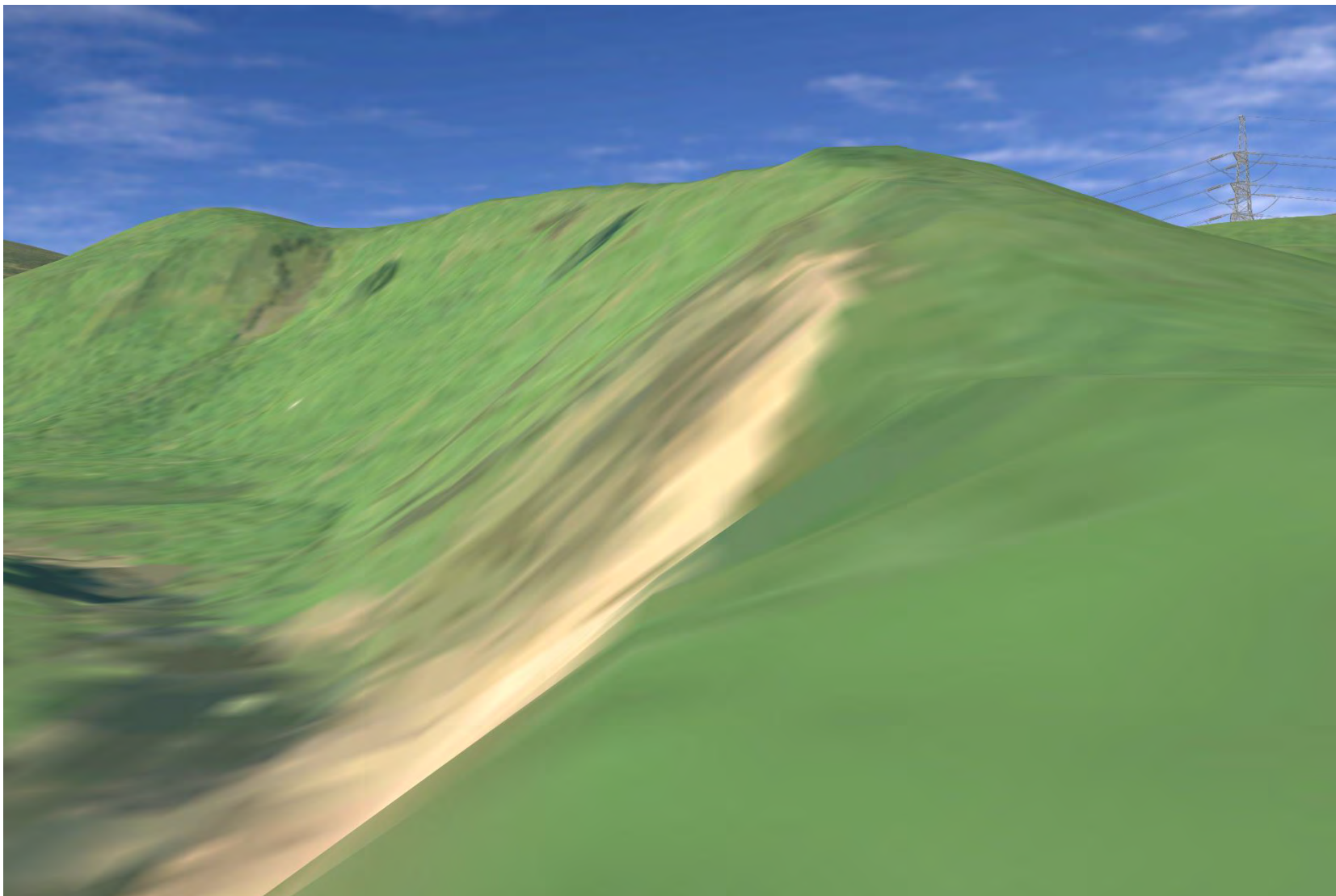




**Plate 659 SM1775 - CHVP\_118 - from asset towards Sletdale Burn and Proposed Development (225°)**

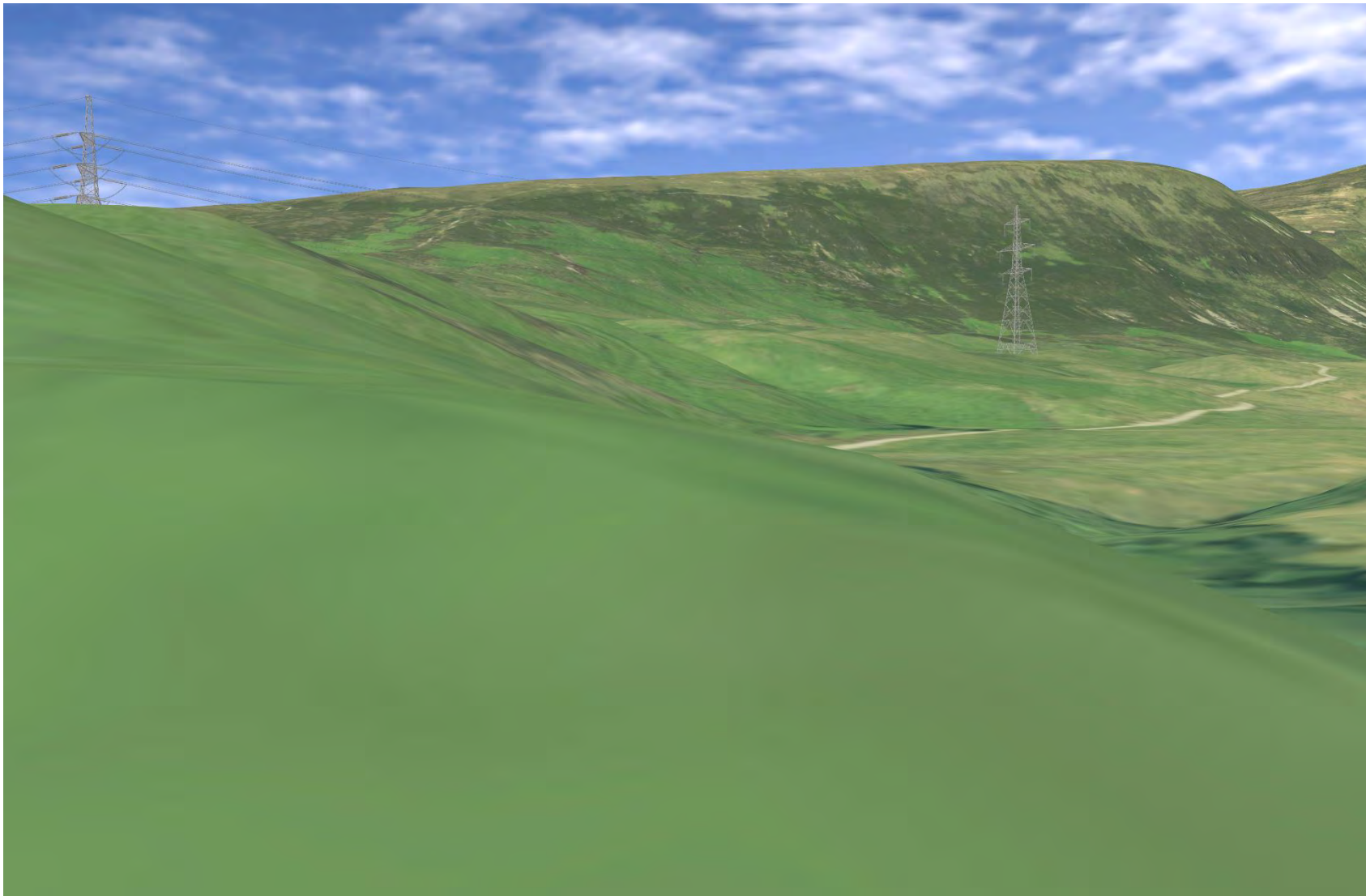


**Plate 660 SM1775 - CHVP\_118 - from asset towards Proposed Development (270°)**





**Plate 661 SM1775 - CHVP\_118 - from asset towards valley (315°)**

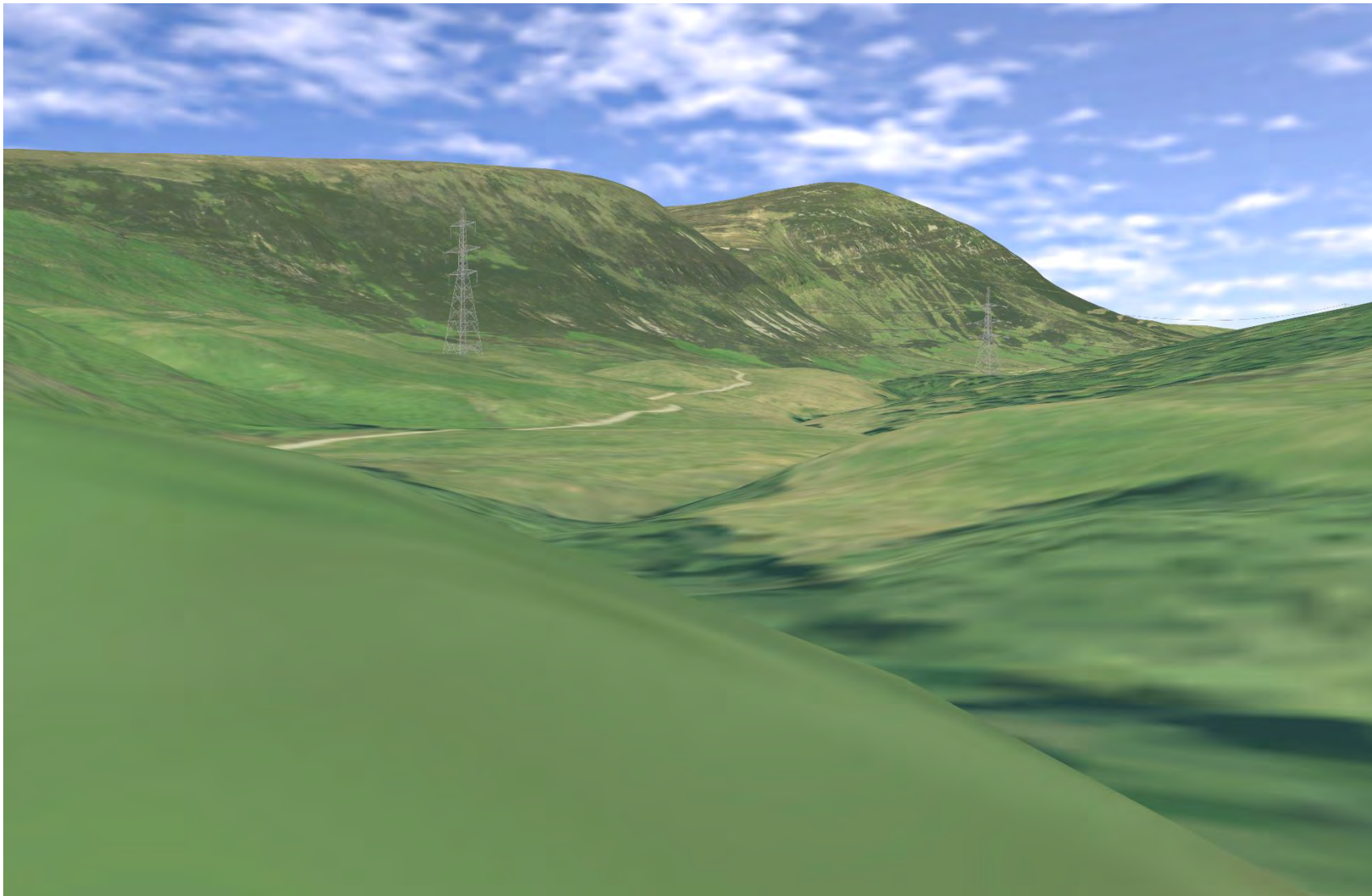


**Plate 662 SM1775 - CHVP\_118 - Potential views to ridgeline (180°)**

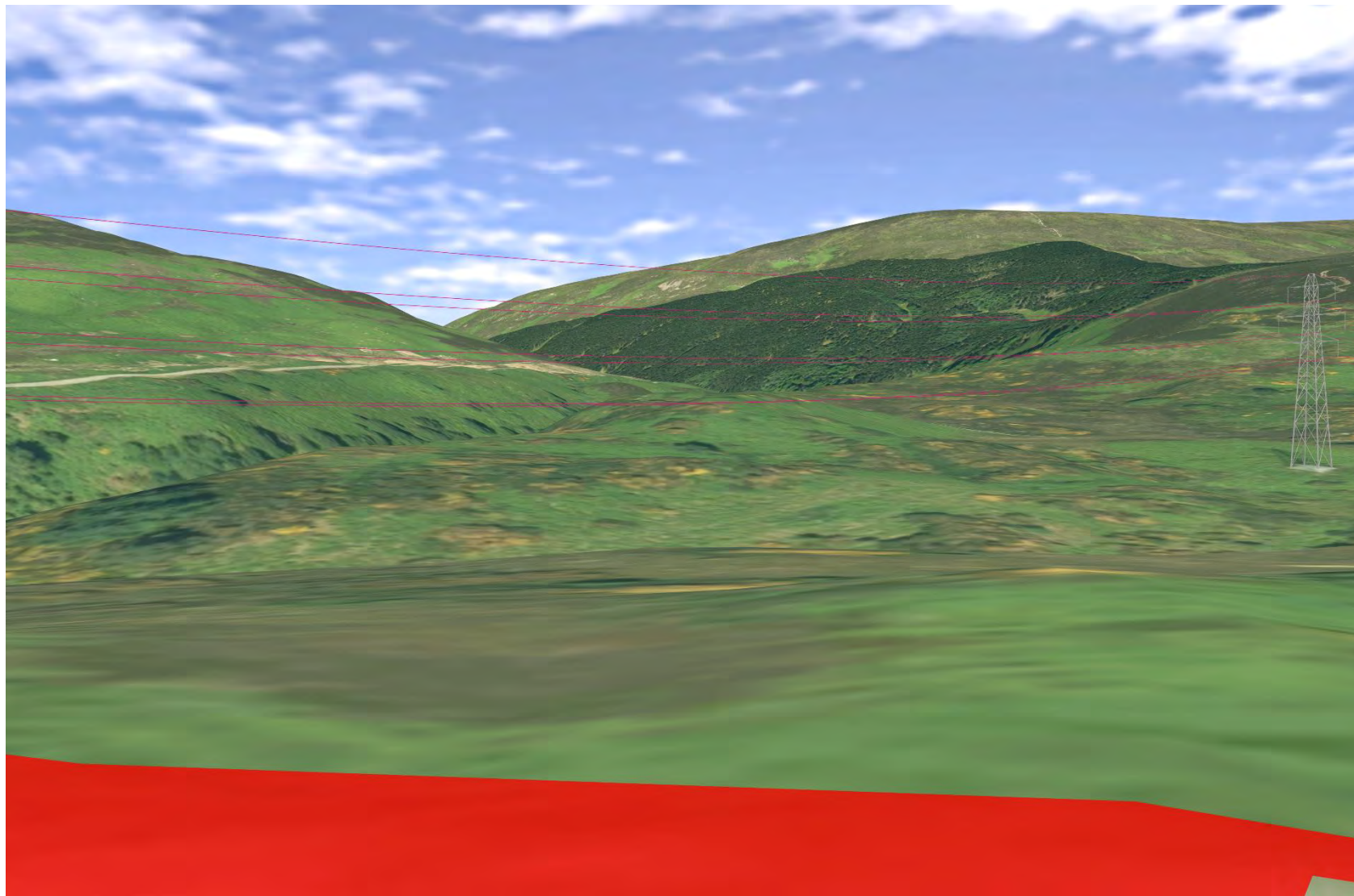




**Plate 663 SM1775 - CHVP\_118 - from asset towards SM13627 (337°)**



**Plate 664 SM1808 - CHVP\_119 - from asset towards Loth Burn and Proposed Development (0°)**





**Plate 665 SM1808 - CHVP\_119 - from asset towards Proposed Development (45°)**

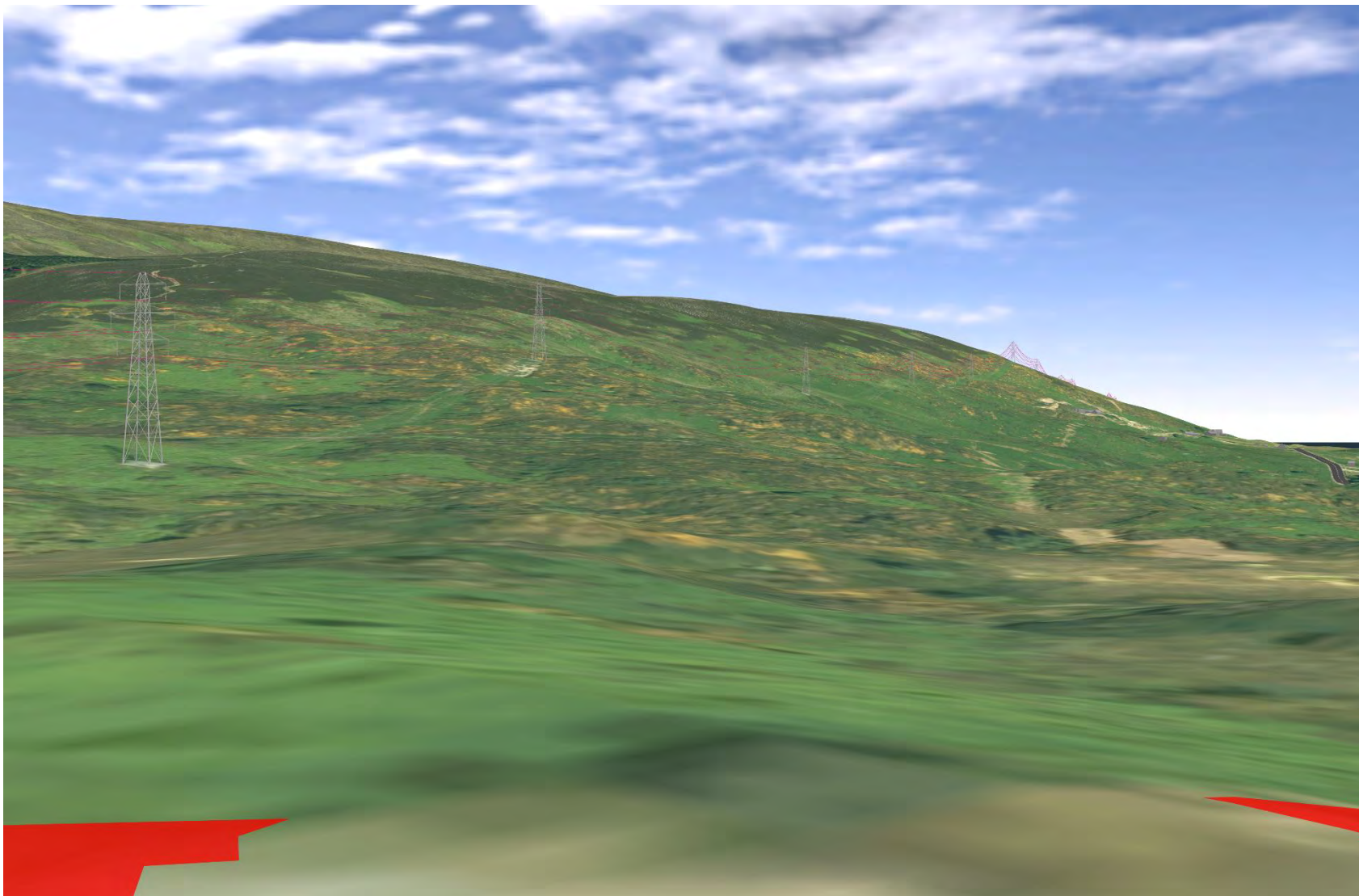
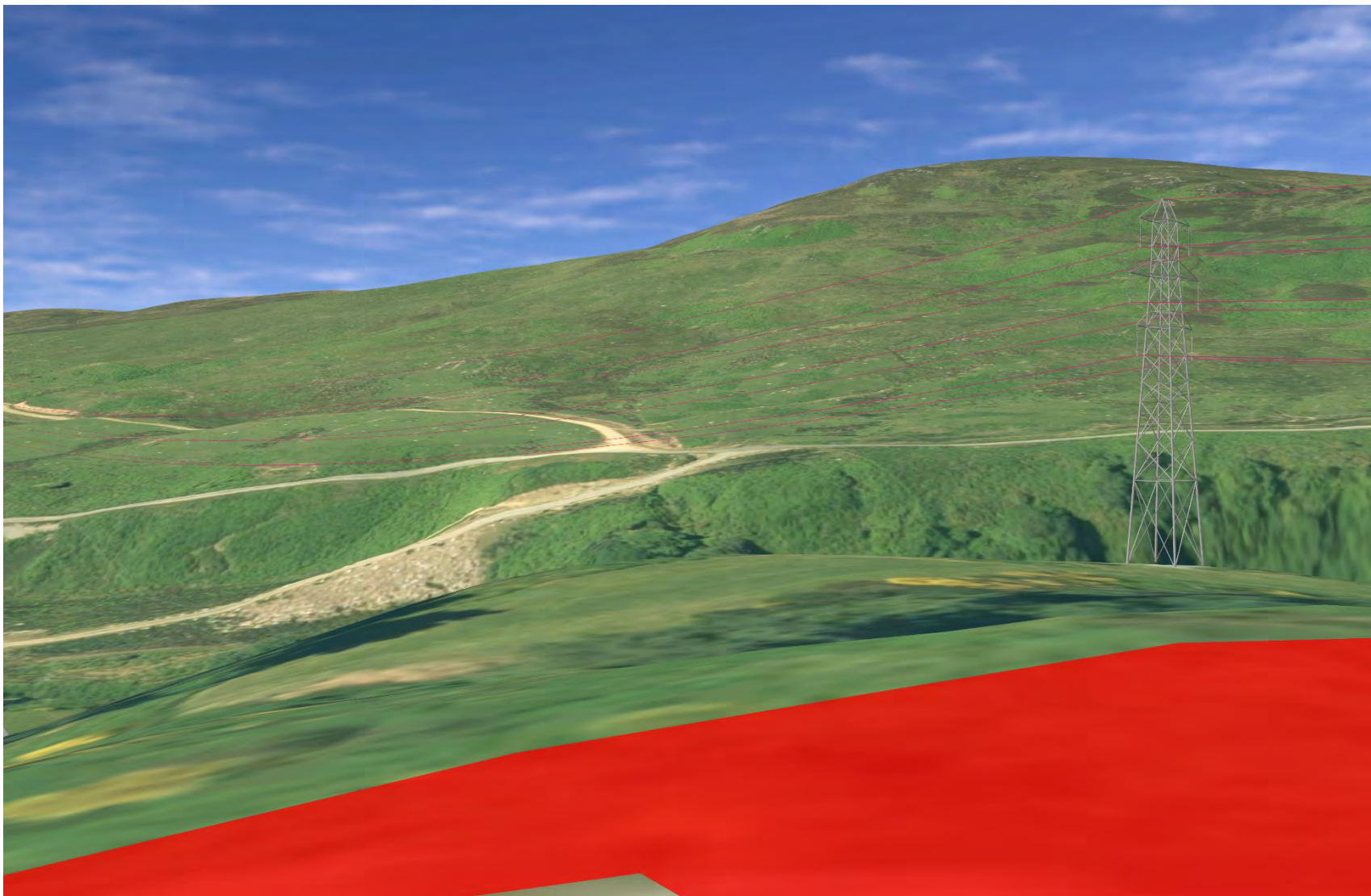


Plate 666 SM1808 - CHVP\_119 - from asset towards Loth Burn and Proposed Development (225°)





Plate 667 SM1808 - CHVP\_119 - from asset towards Loth Burn and Proposed Development (270°)



**Plate 668 SM1808 - CHVP\_119 - from asset towards Loth Burn and Proposed Development (315°)**

