

Plate 941: SM10495 - CHVP_173 - towards Proposed Development (270°)

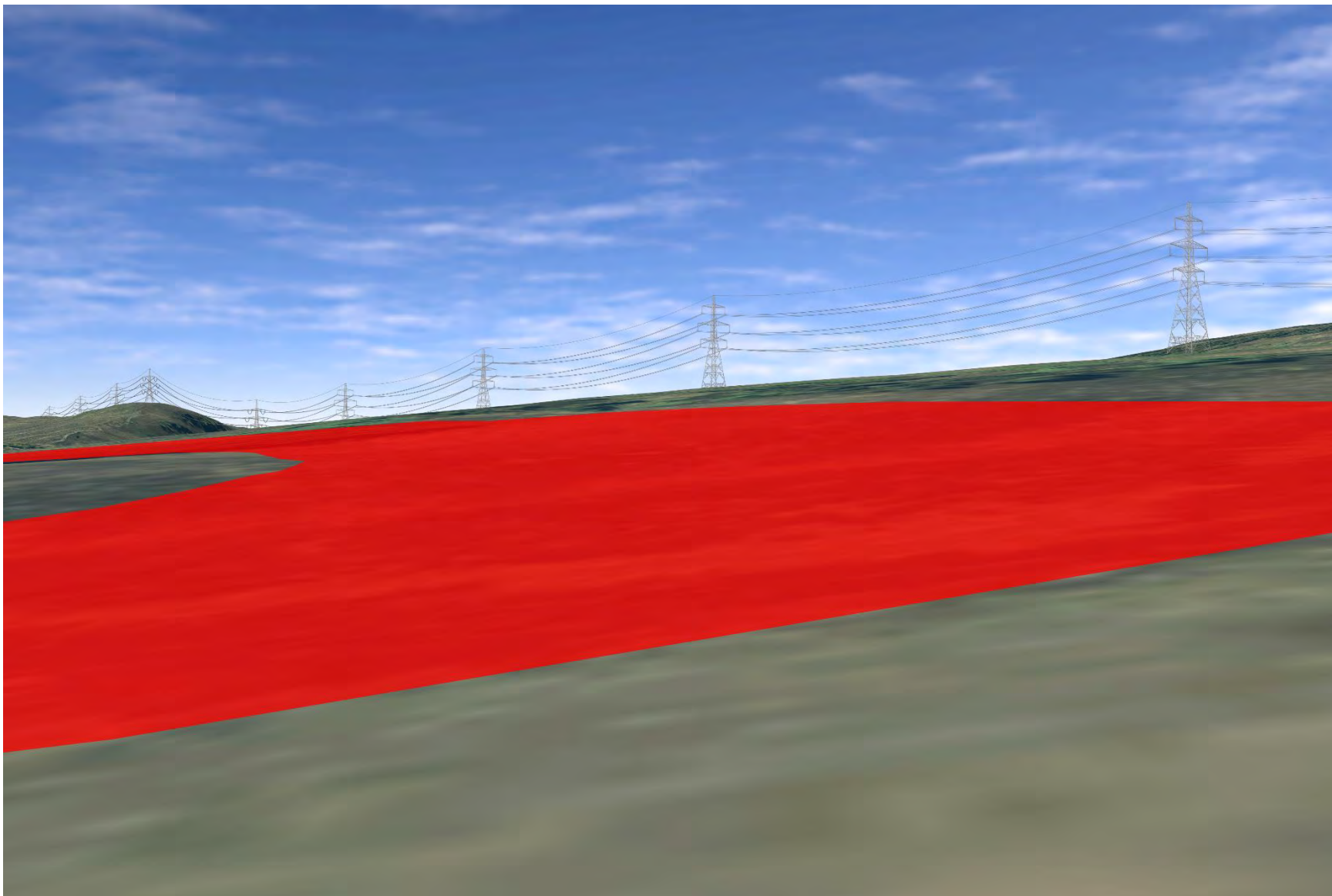


Plate 942: SM10495 - CHVP_173 - towards Proposed Development (315°)

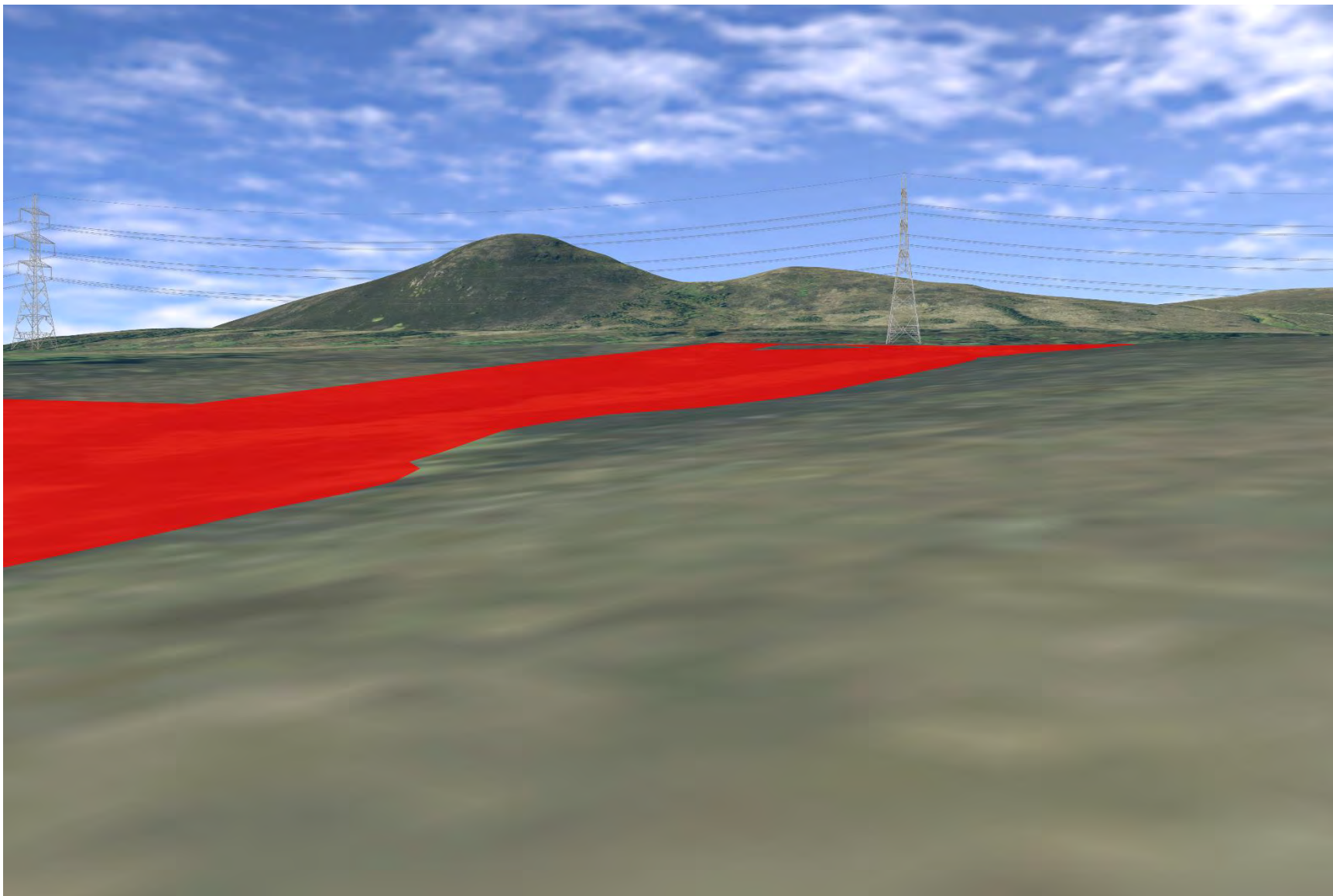


Plate 943: SM4728 - CHVP_174 - towards Proposed Development (0°)

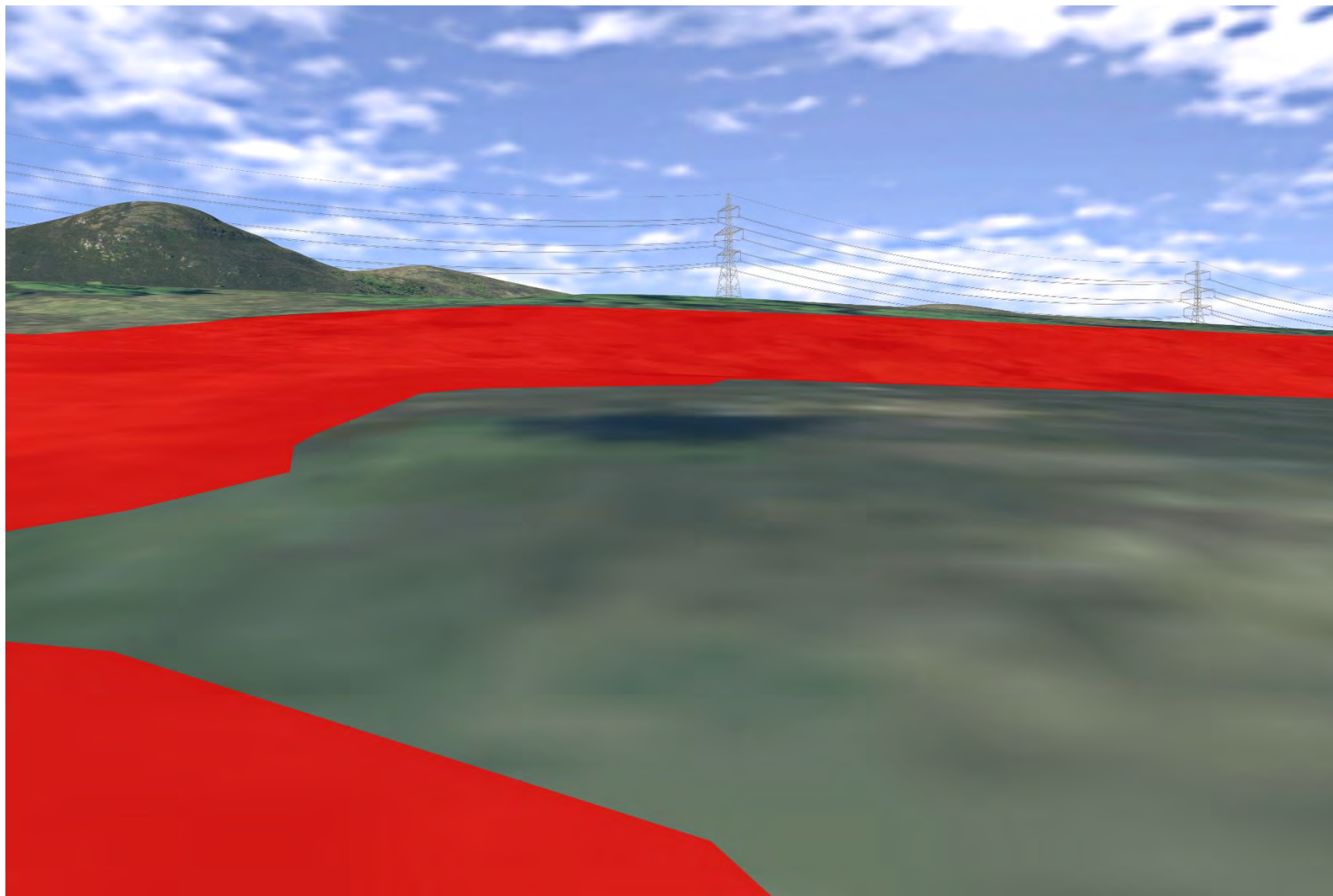


Plate 944: SM4728 - CHVP_174 - towards SM10495 and Proposed Development (45°)

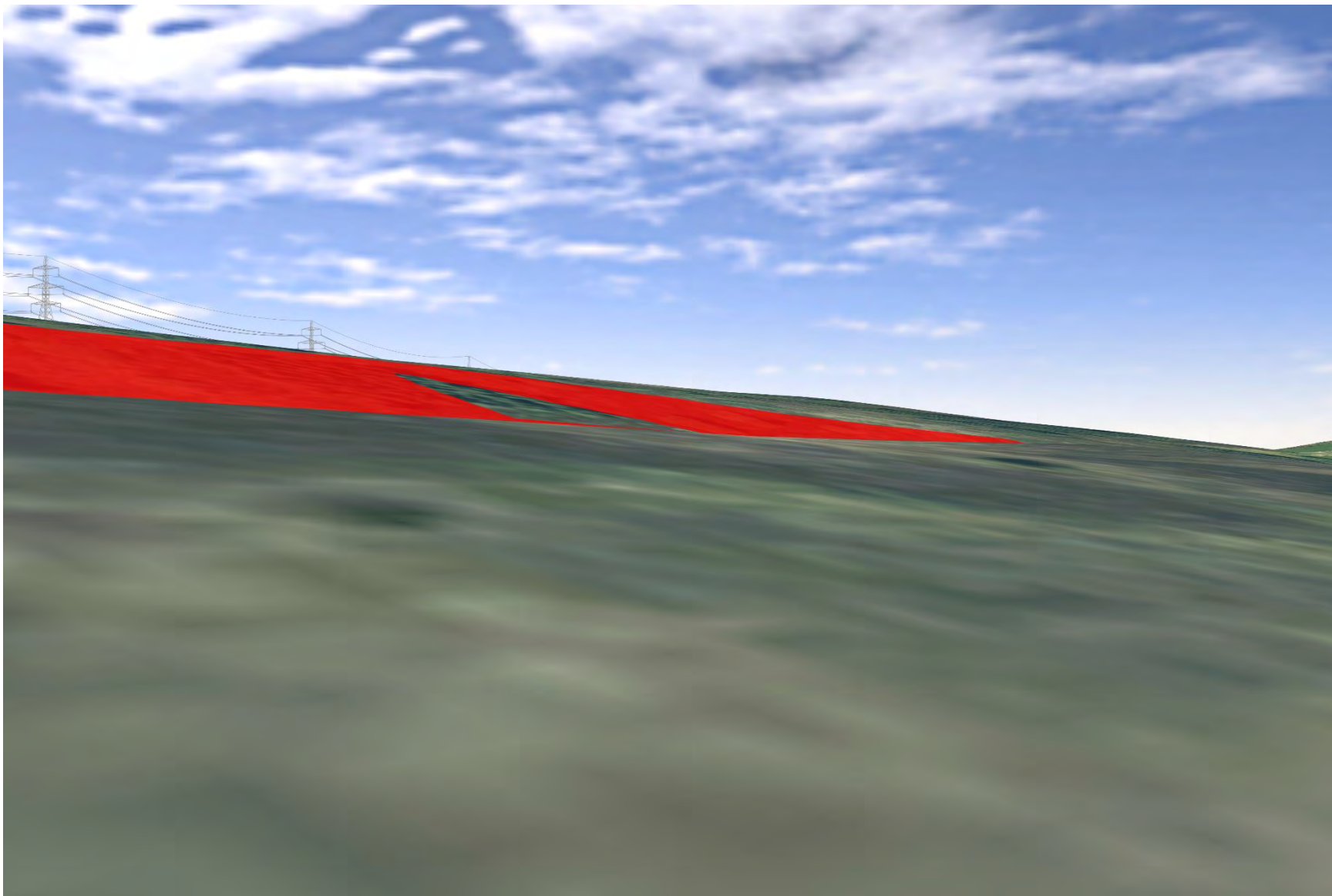


Plate 945: SM4728 - CHVP_174 - towards Proposed Development (225°)

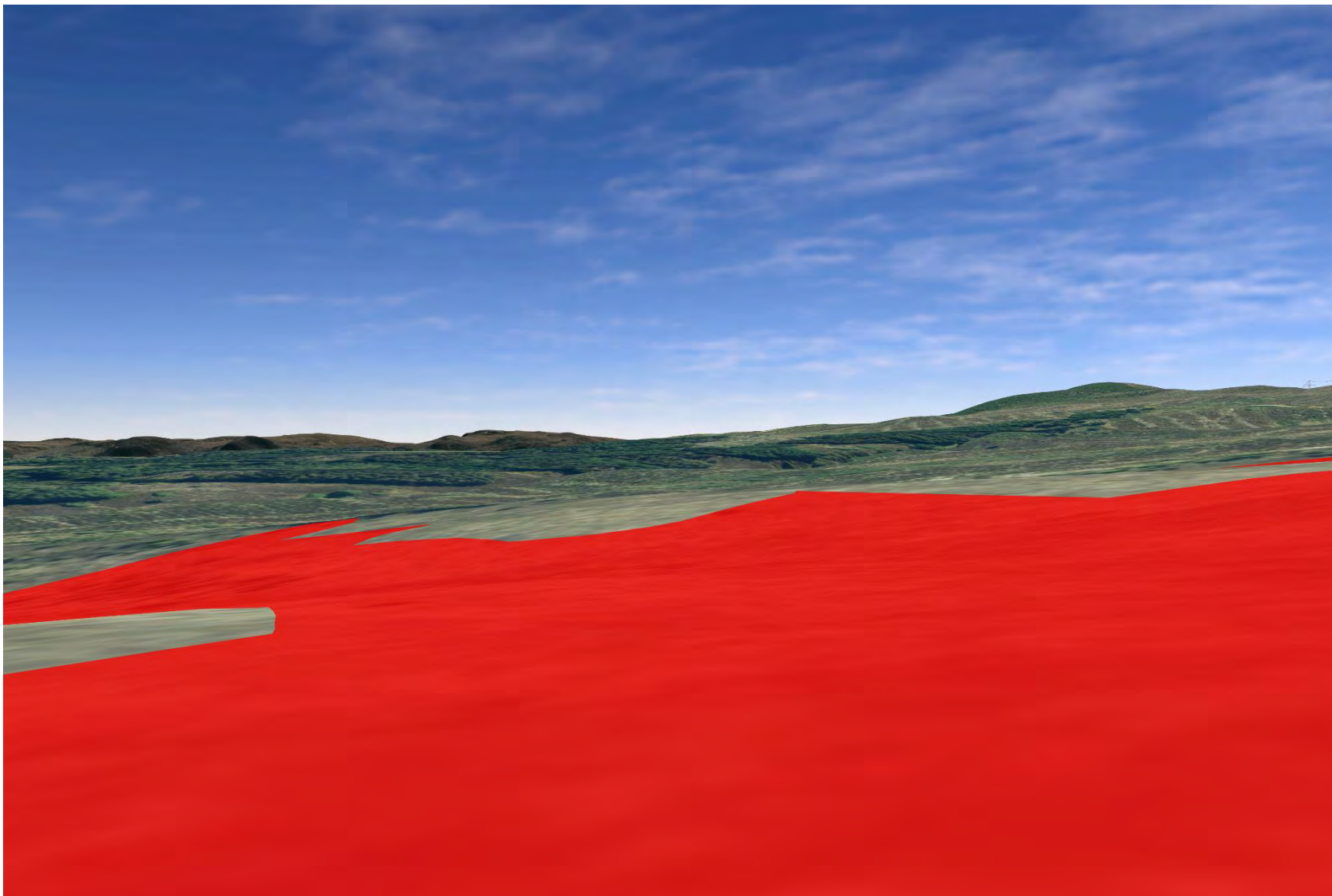


Plate 946: SM4728 - CHVP_174 - towards Proposed Development (270°)

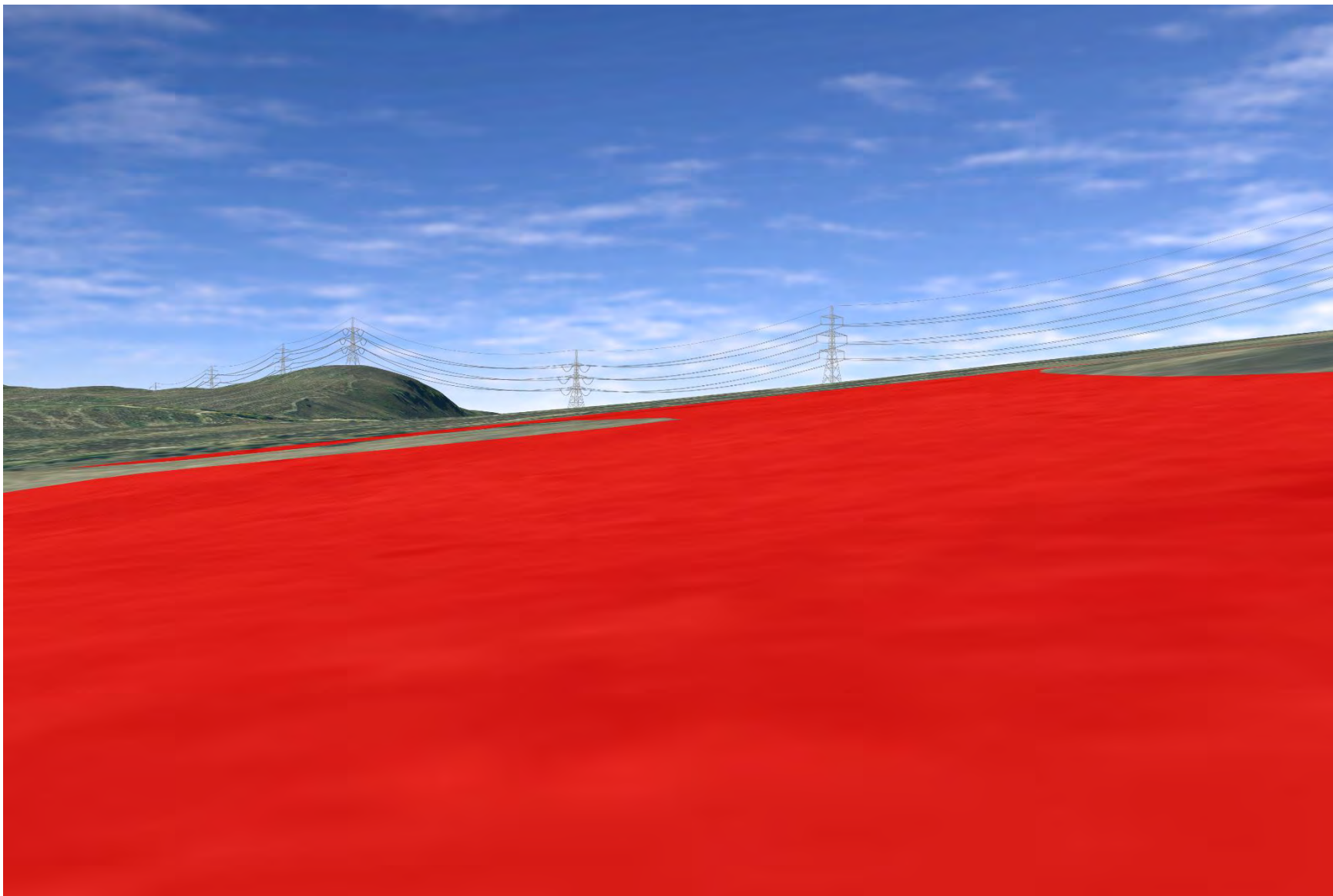


Plate 947: SM4728 - CHVP_174 - towards Proposed Development (315°)

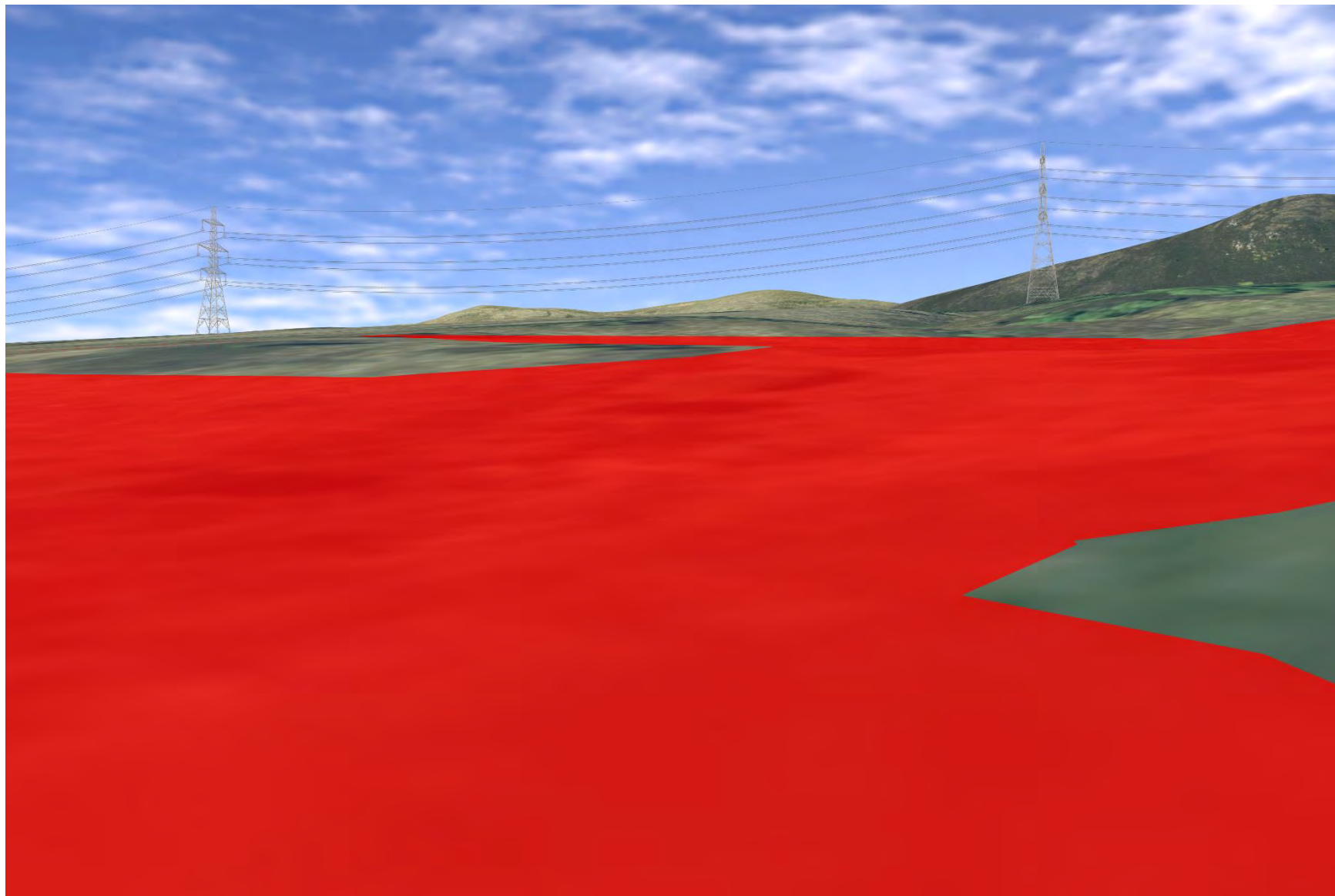


Plate 948: SM2312 - CHVP_175 - towards SM4728, Abhainn Sgitheach and Proposed Development (0°)

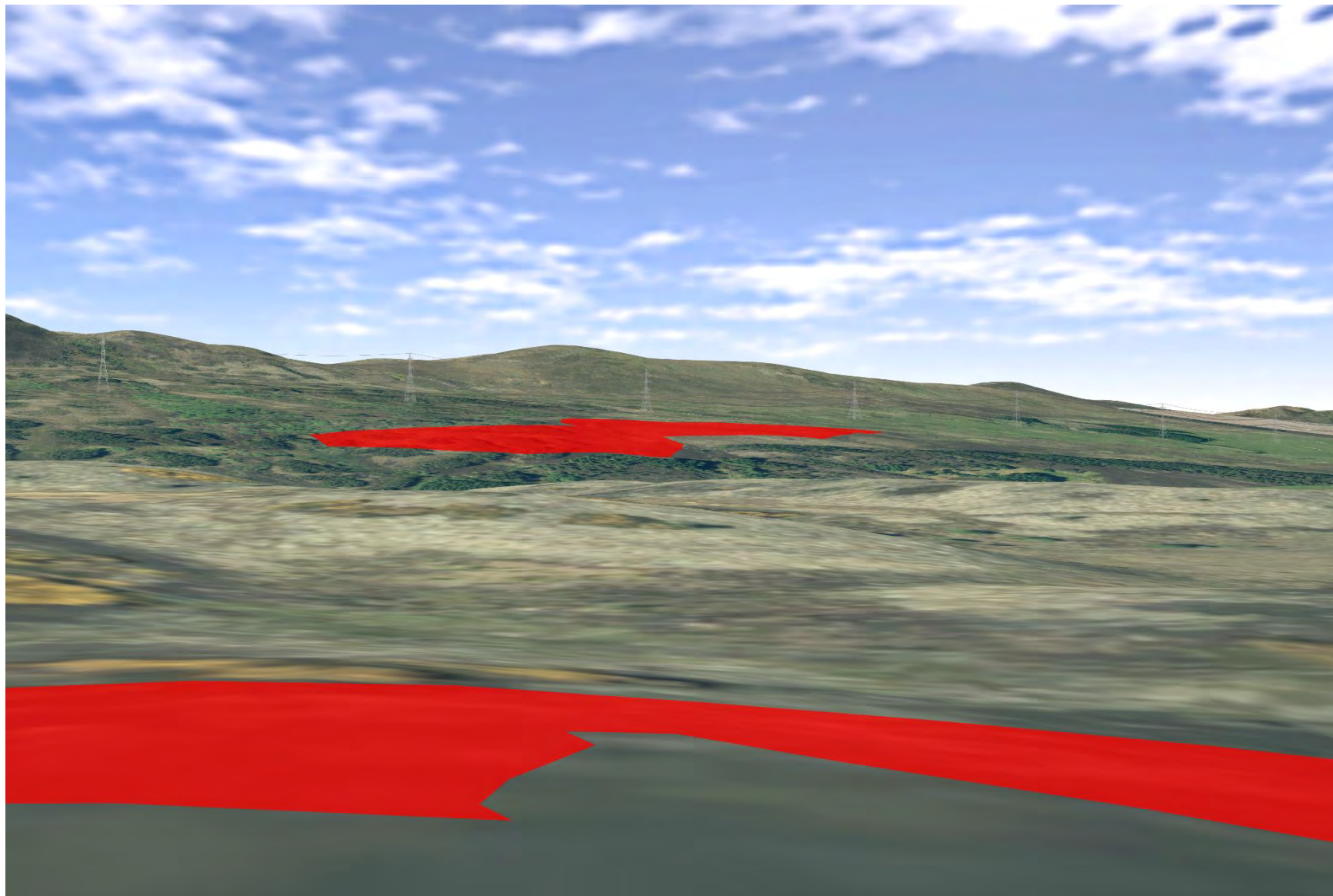


Plate 949: SM2312 - CHVP_175 - towards Proposed Development and Abhainn Sgitheach (45°)

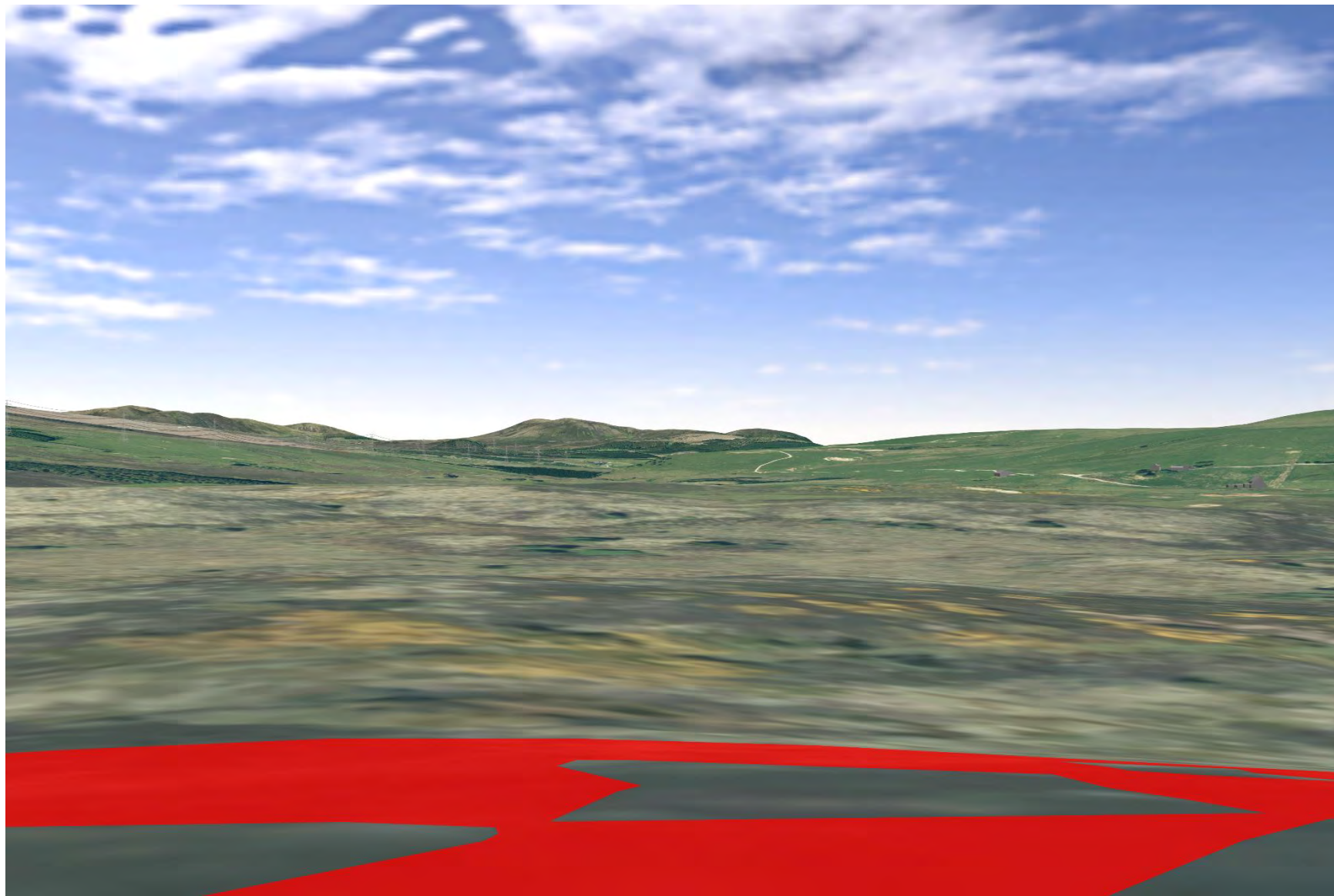


Plate 950: SM2312 - CHVP_175 - towards Proposed Development and River Peffery (225°)

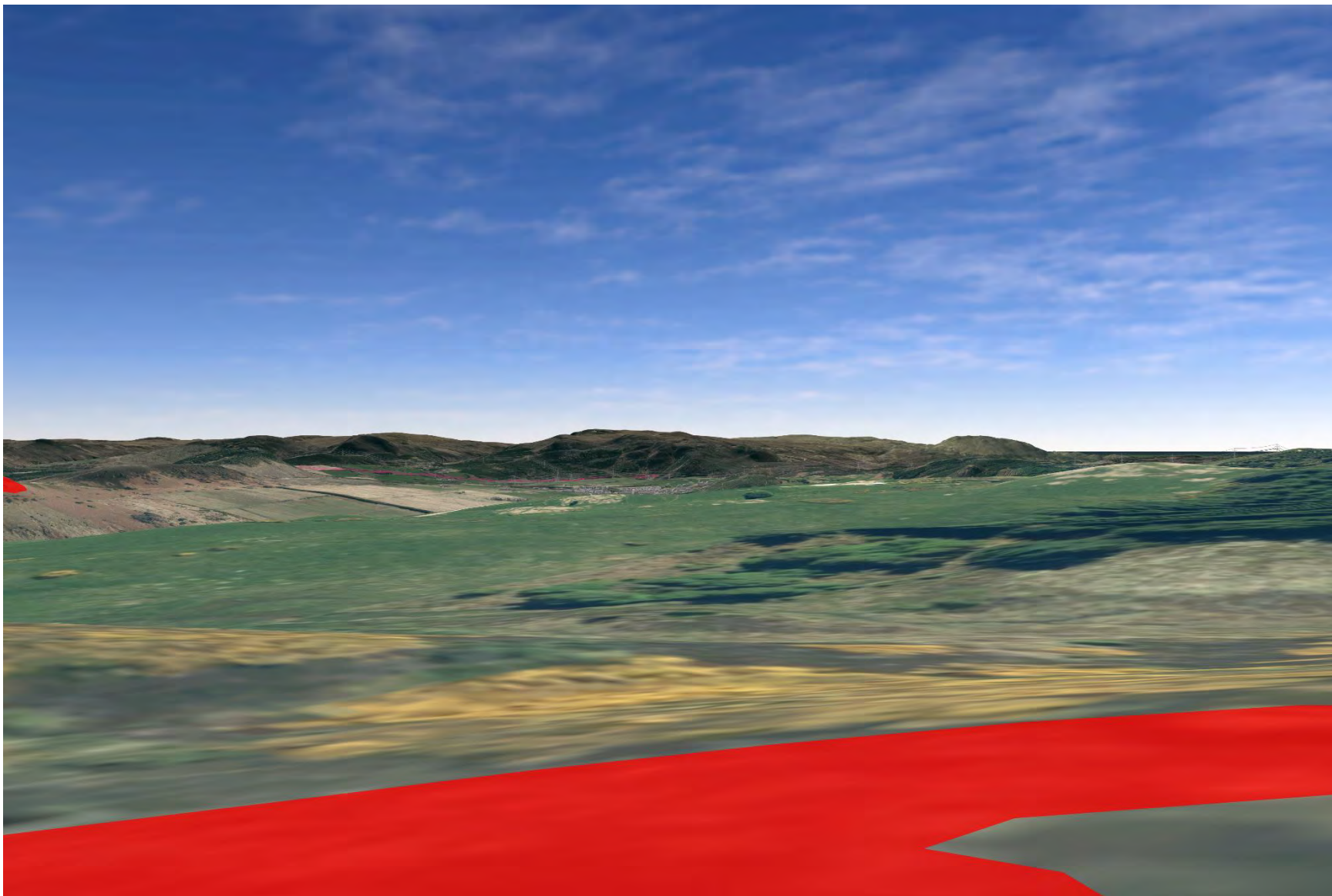


Plate 951: SM2312 - CHVP_175 - towards Proposed Development (270°)

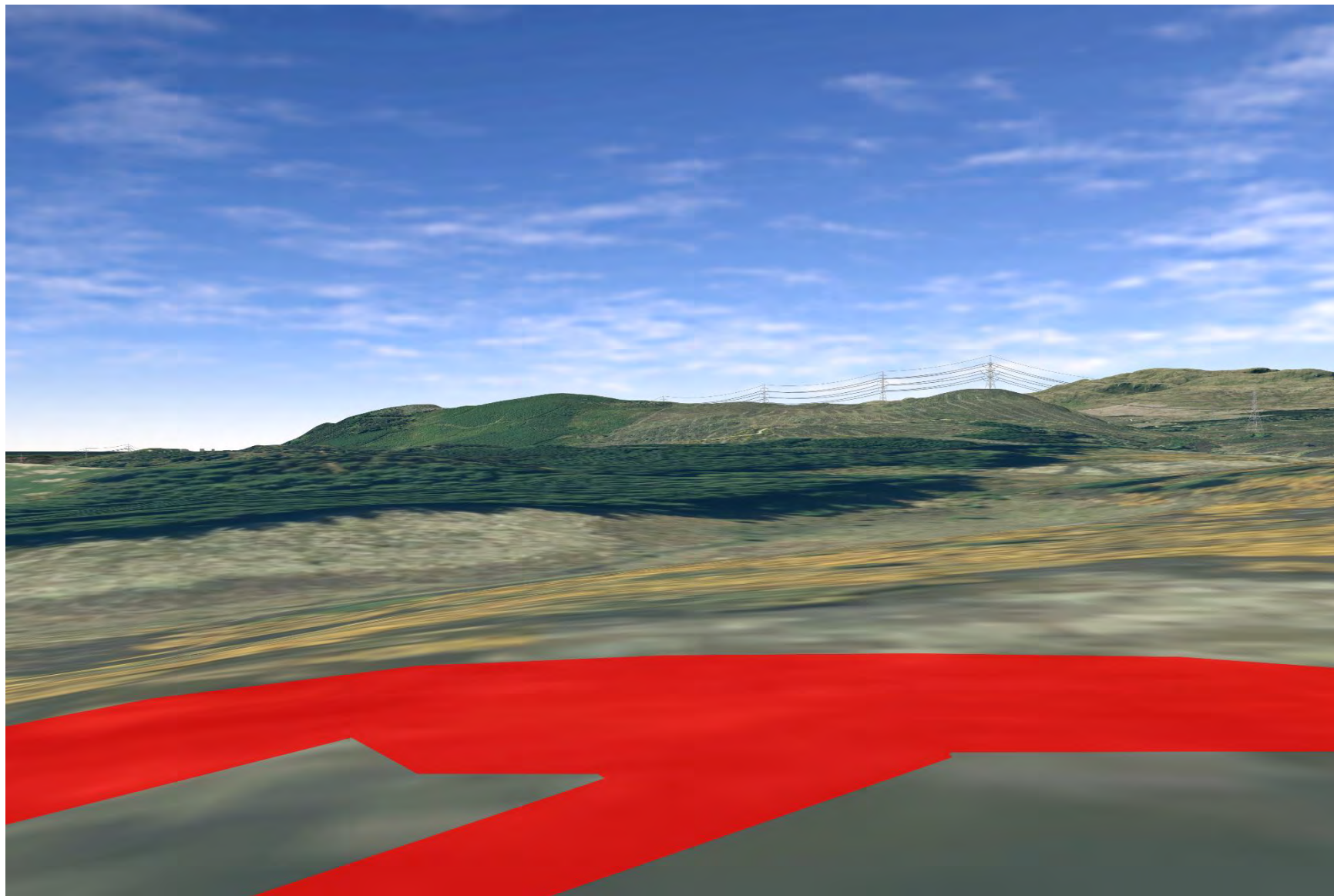


Plate 952: SM2312 - CHVP_175 - towards Proposed Development and Abhainn Sgitheach (315°)

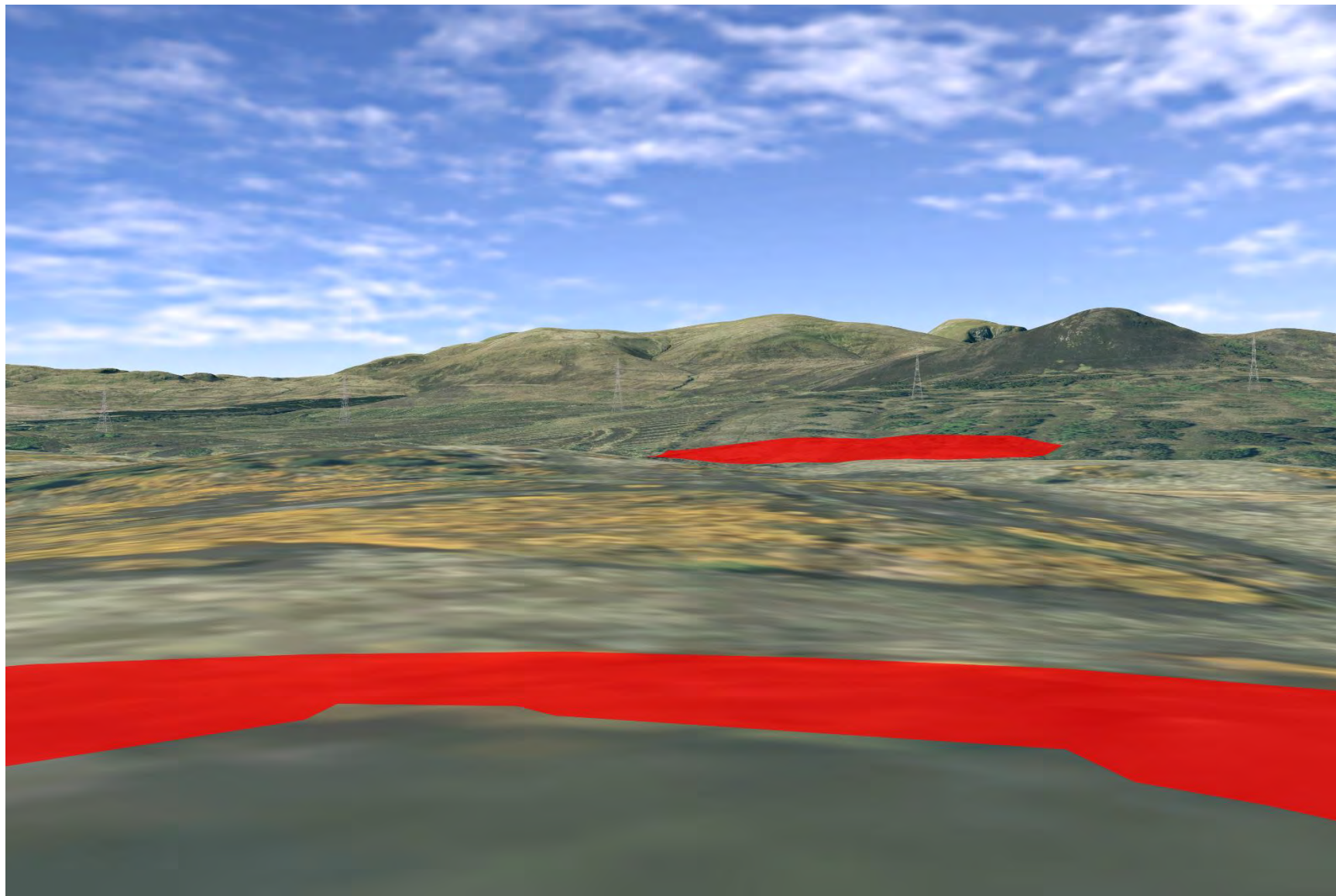


Plate 953: GDL00094 - CHVP_176 - from castle (LB7826) towards Proposed Development and outward toward policy (0°)

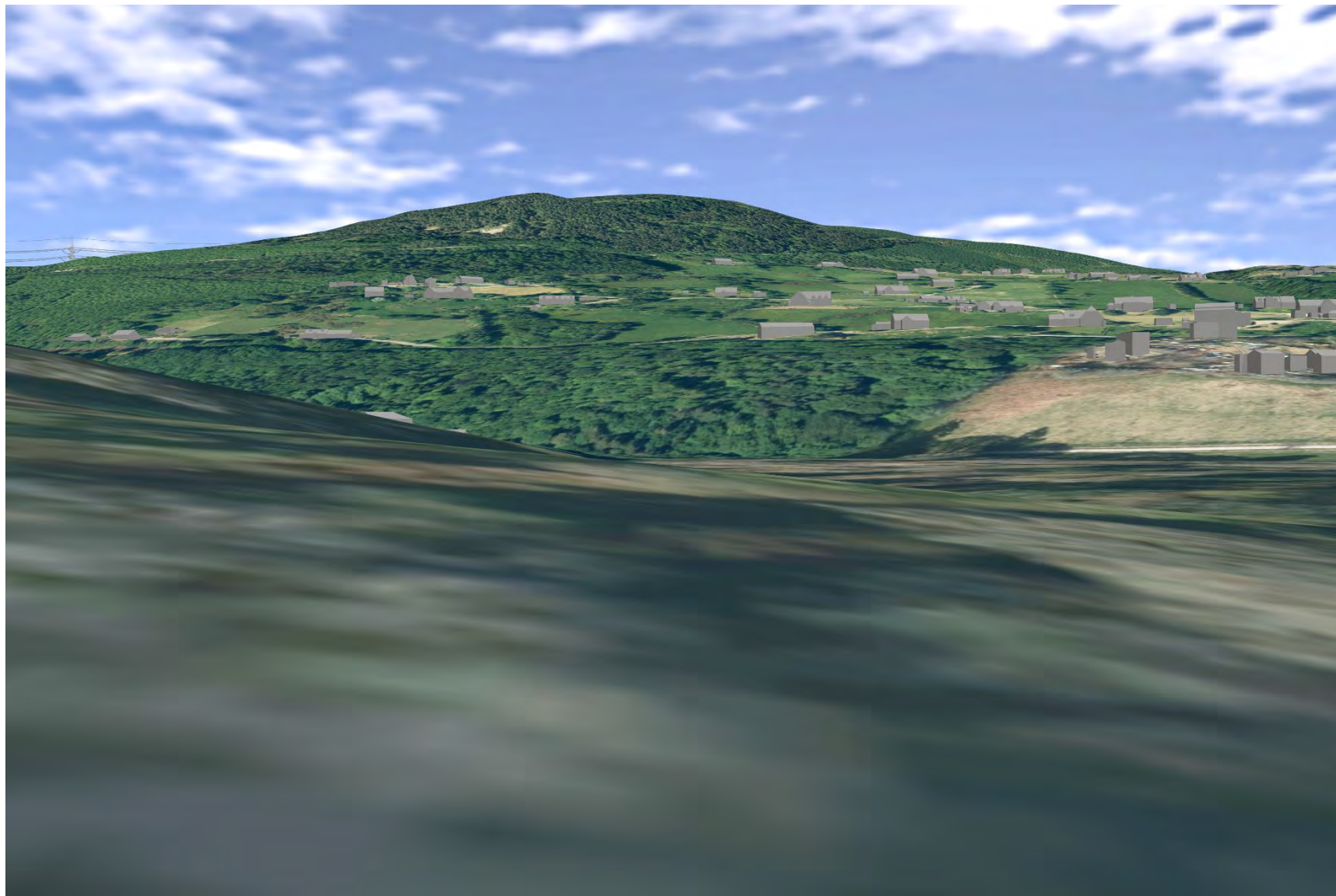


Plate 954: GDL00094 - CHVP_176 - from castle (LB7826) towards Proposed Development and outward toward policy (45°)

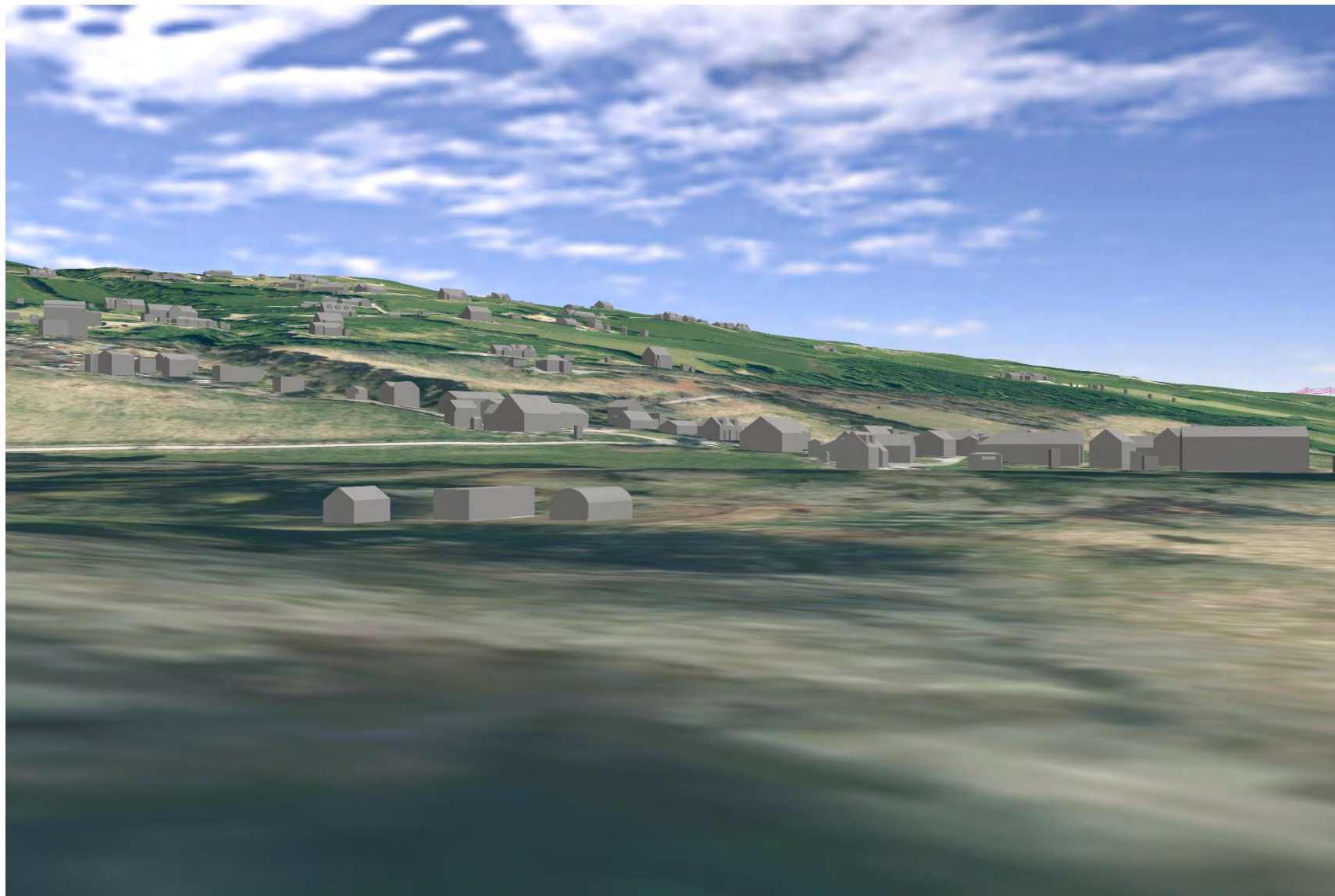


Plate 955: GDL00094 - CHVP_176 - from castle (LB7826) towards Proposed Development and outward toward policy (180°)



Plate 956: GDL00094 - CHVP_176 - from castle (LB7826) towards Proposed Development and outward toward policy (225°)

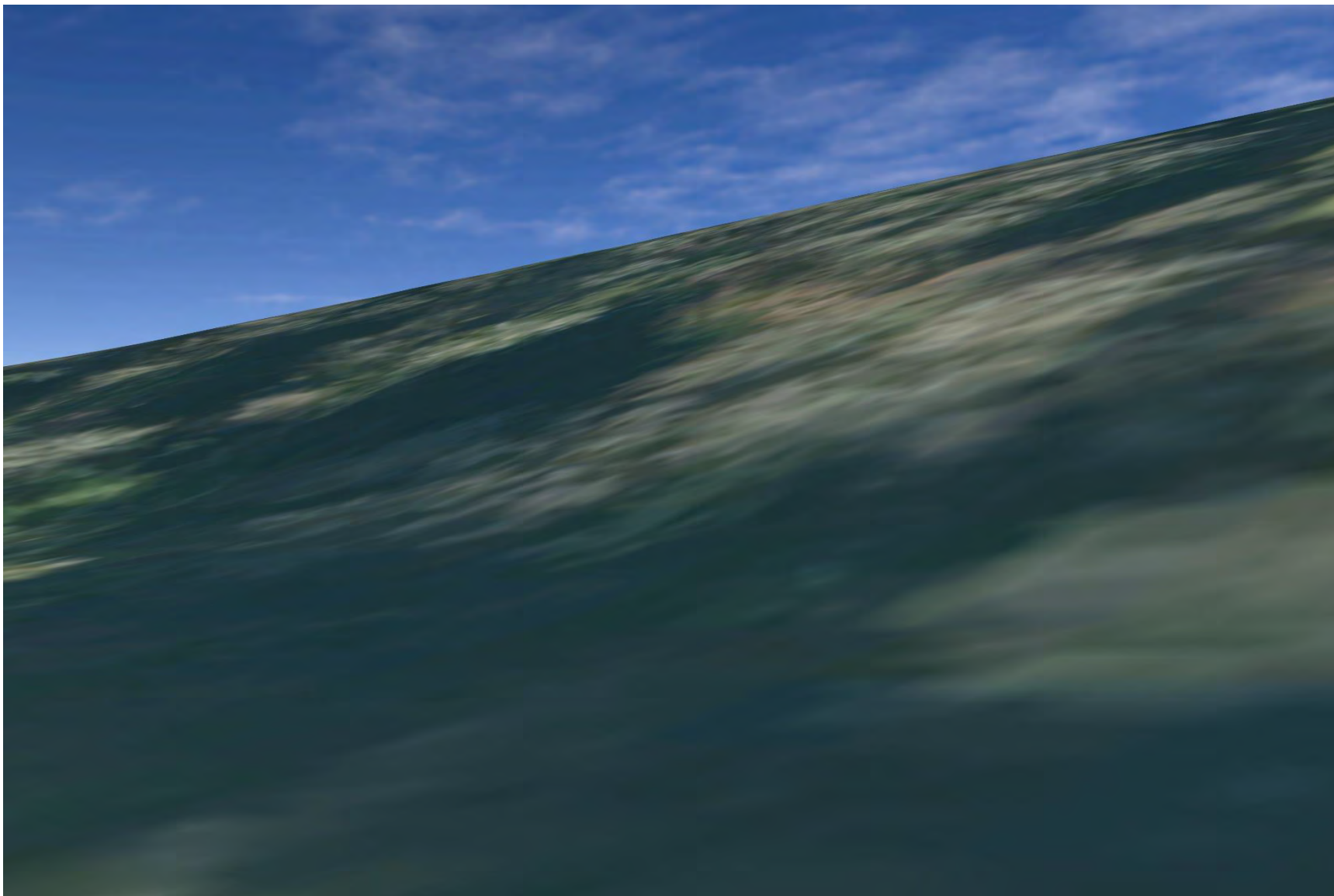


Plate 957: GDL00094 - CHVP_176 - from castle (LB7826) towards Proposed Development and outward toward policy (270°)

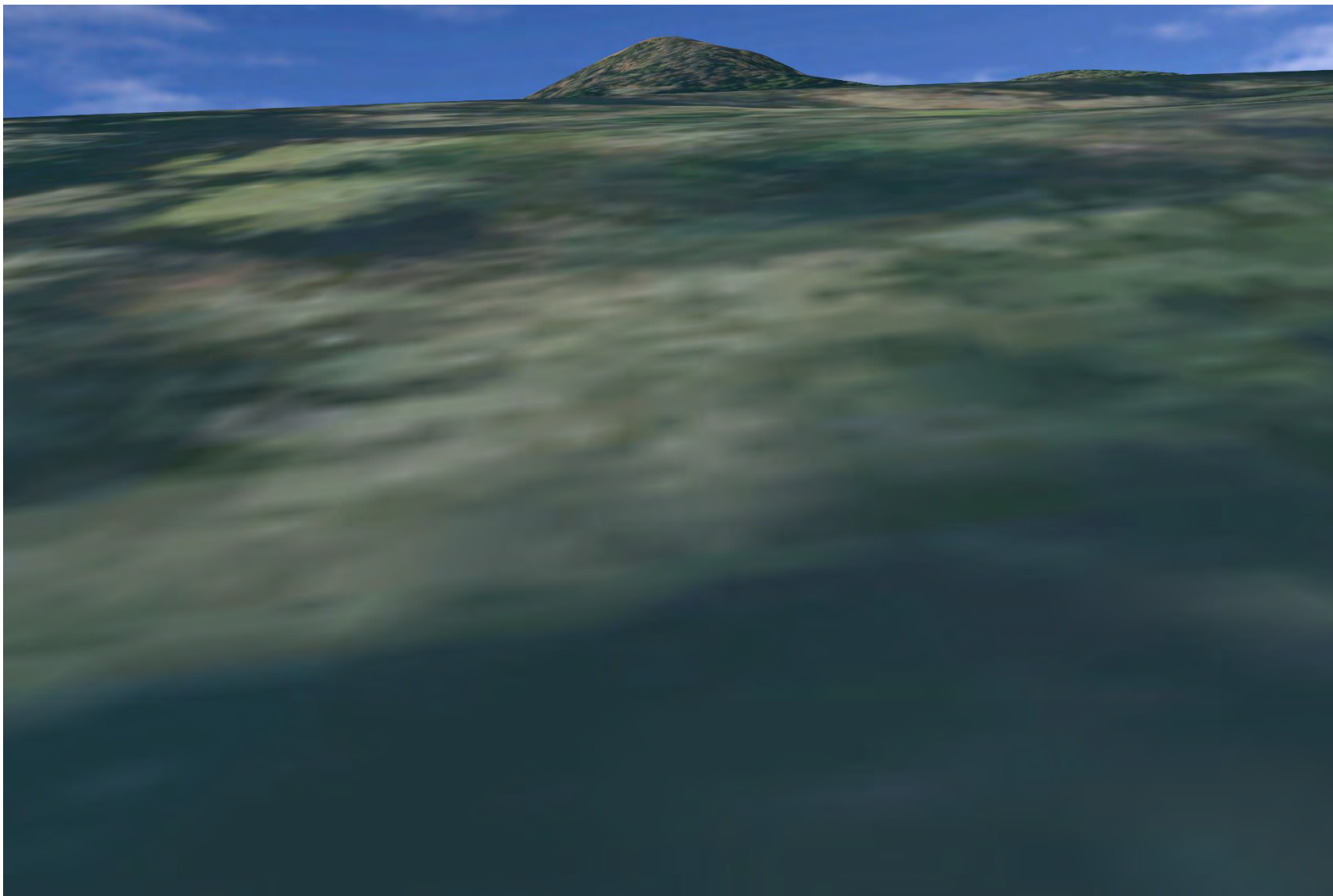


Plate 958: GDL00094 - CHVP_176 - from castle (LB7826) towards Proposed Development and outward toward policy (315°)

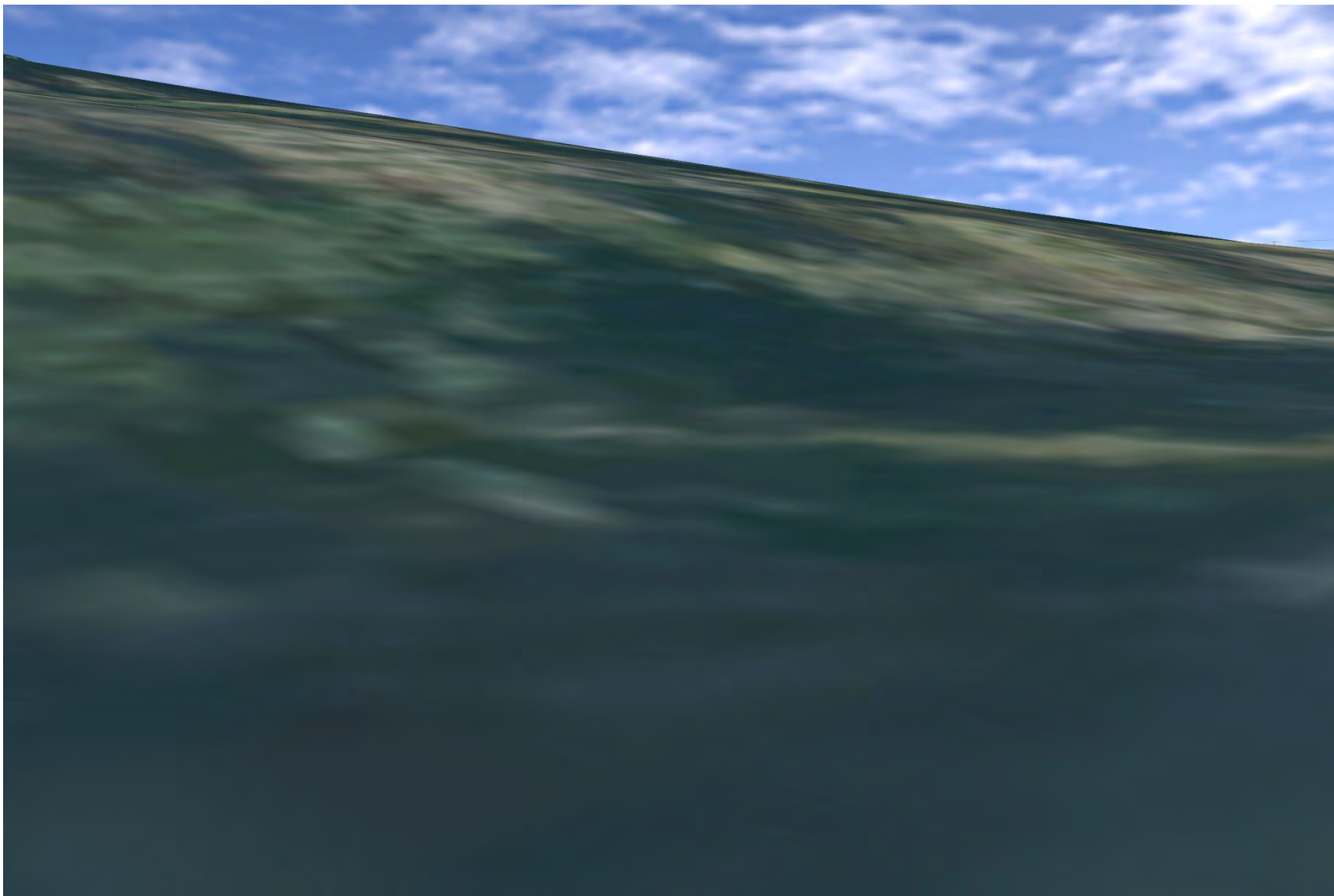


Plate 959: GDL00094 - CHVP_177 - from Gates (LB7827) to castle on main approach (317°)

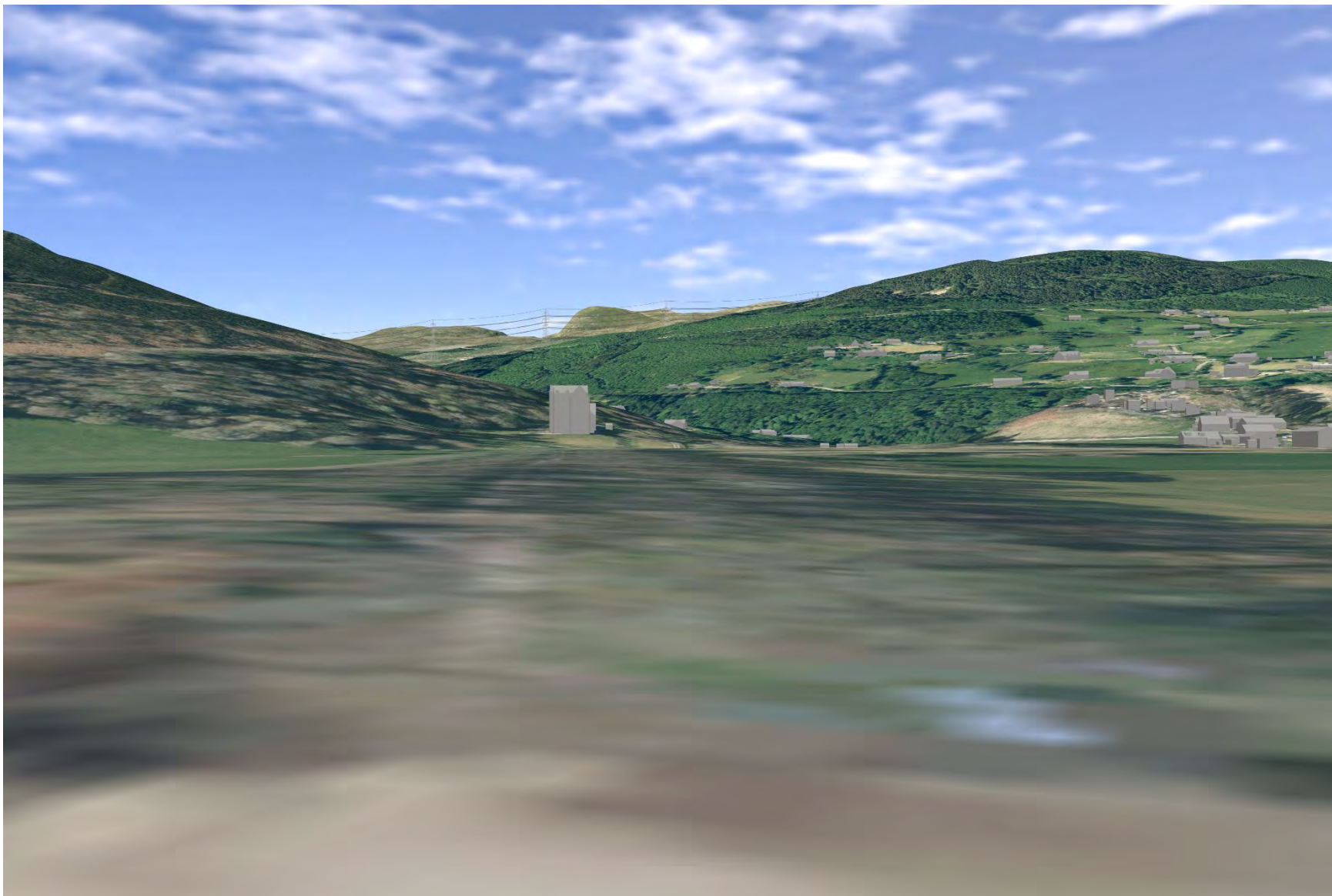


Plate 960: GDL00095 - CHVP_178 - from A834 looking SW towards GDL and Proposed Development (292°)

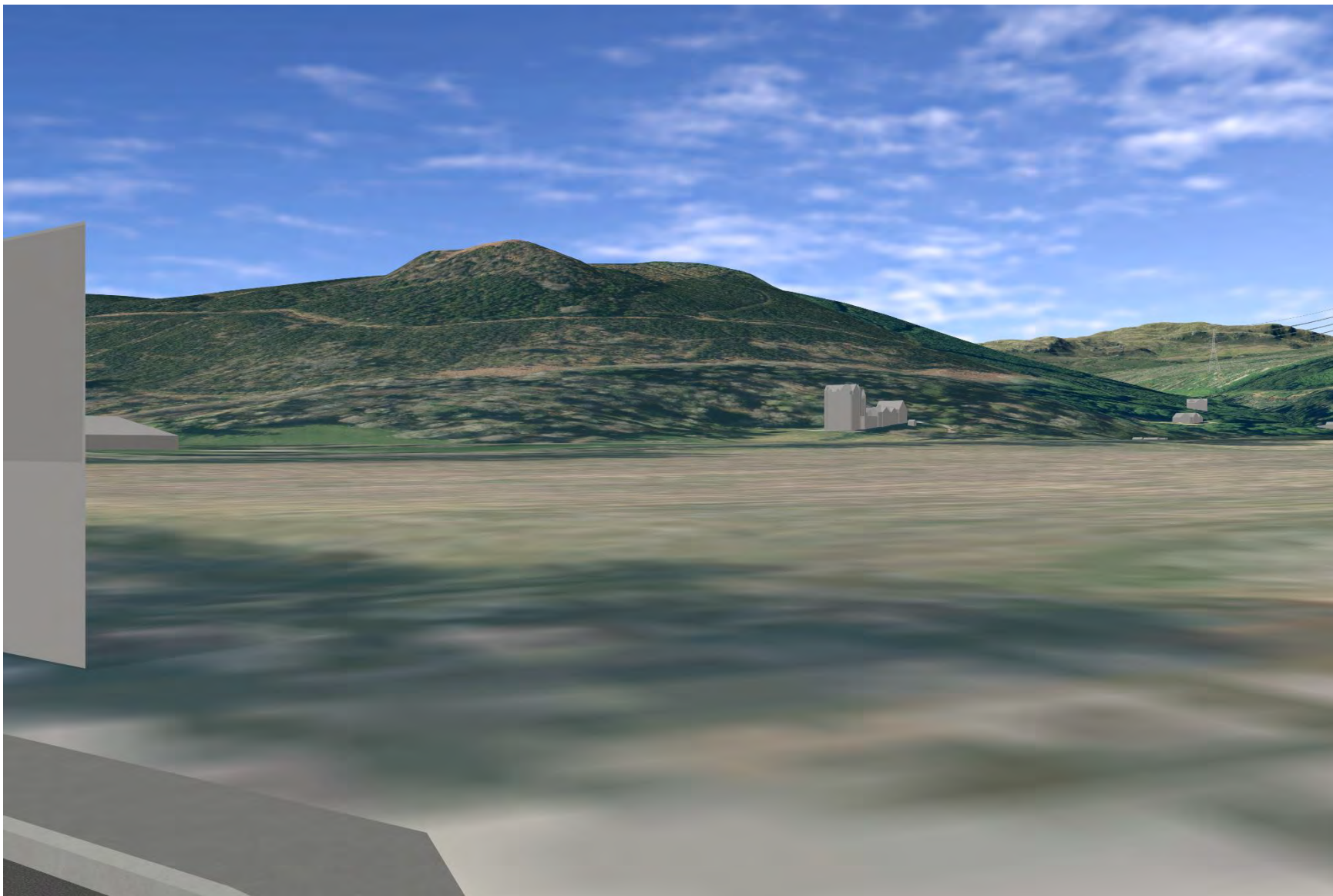


Plate 961: GDL00095 - CHVP_178 - from A834 and Strathpeffer towards GDL and Proposed Development (0°)

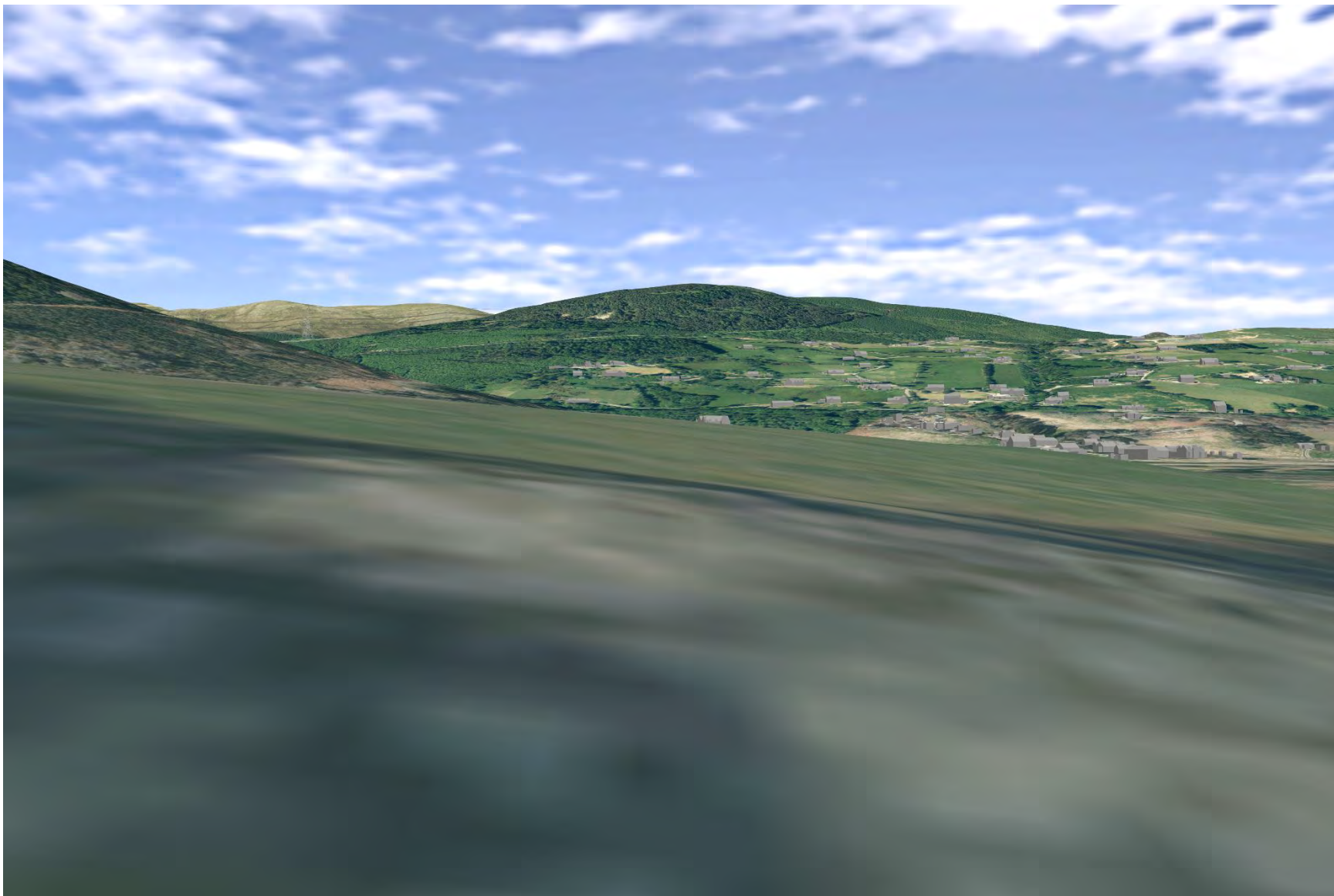


Plate 962: GDL00095 - CHVP_178 - from Knock Farril towards GDL and Proposed Development (337°)

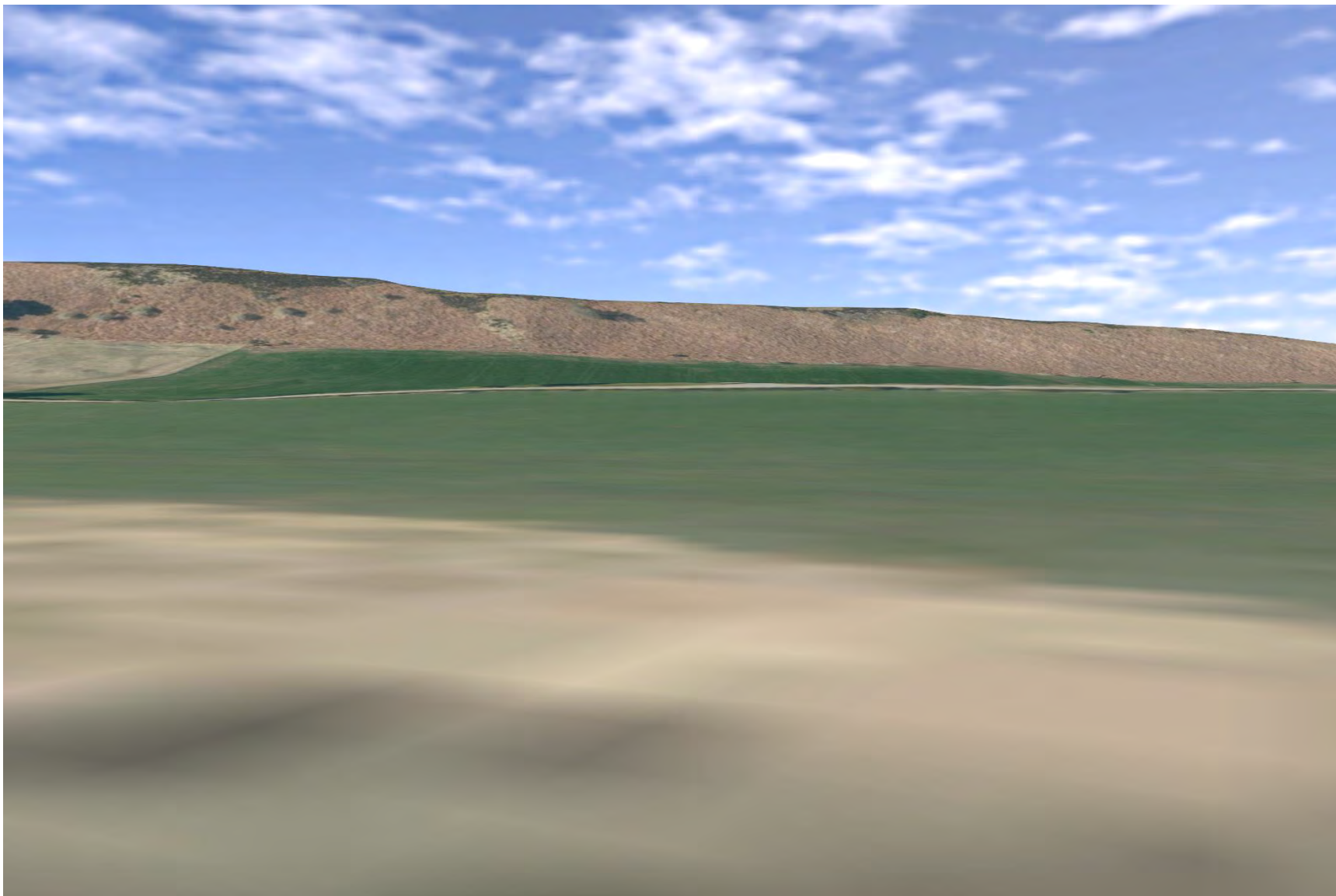


Plate 963: GDL00095 - CHVP_178 - from upland wilderness backdrop for GDL00094 and Strathpeffer (90°)

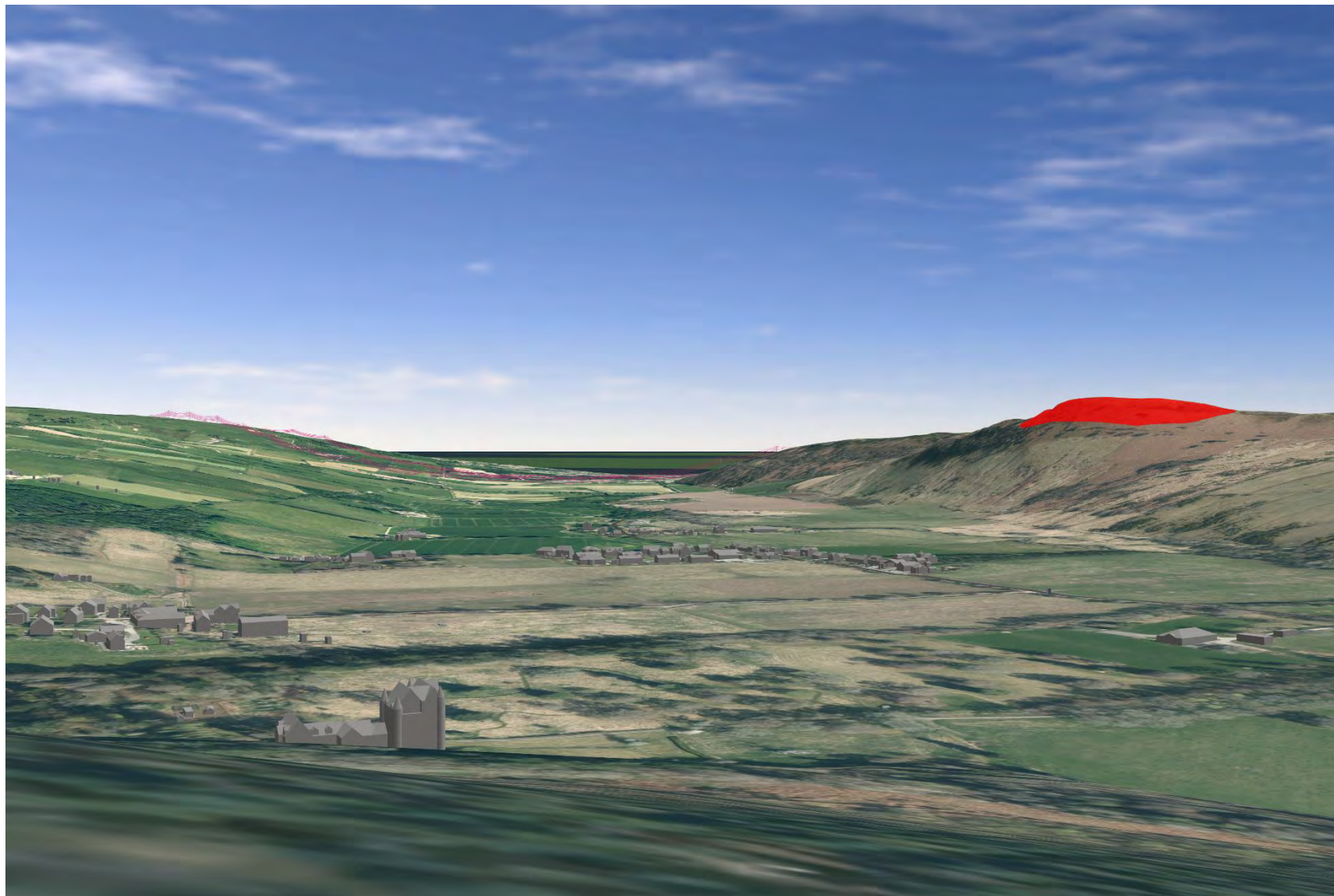


Plate 964: SM1672 - CHVP_179 - towards Proposed Development and River Peffery (0°)



Plate 965: SM1672 - CHVP_179 - towards Proposed Development and valley (45°)

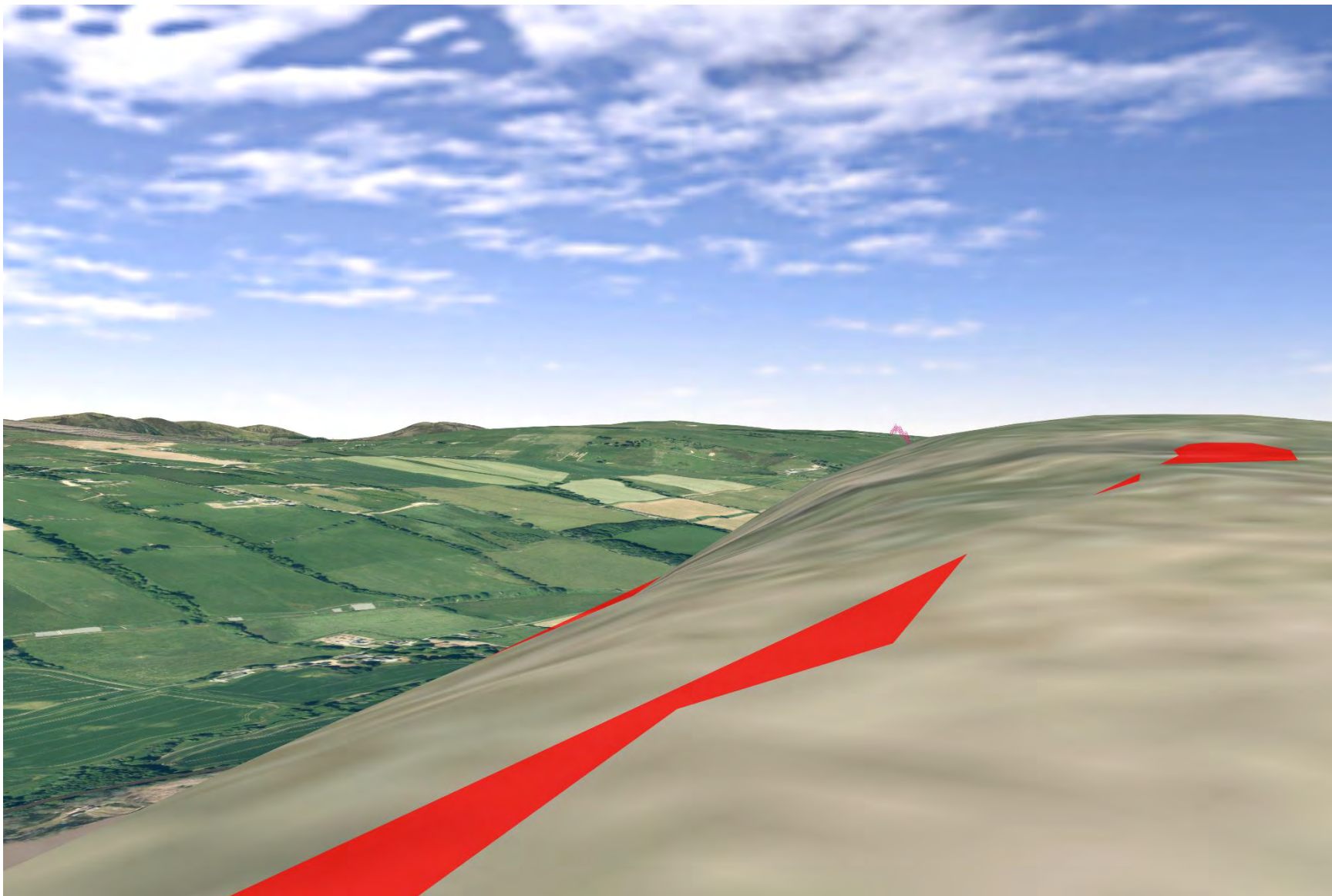


Plate 966: SM1672 - CHVP_179 - towards Proposed Development and valley (180°)

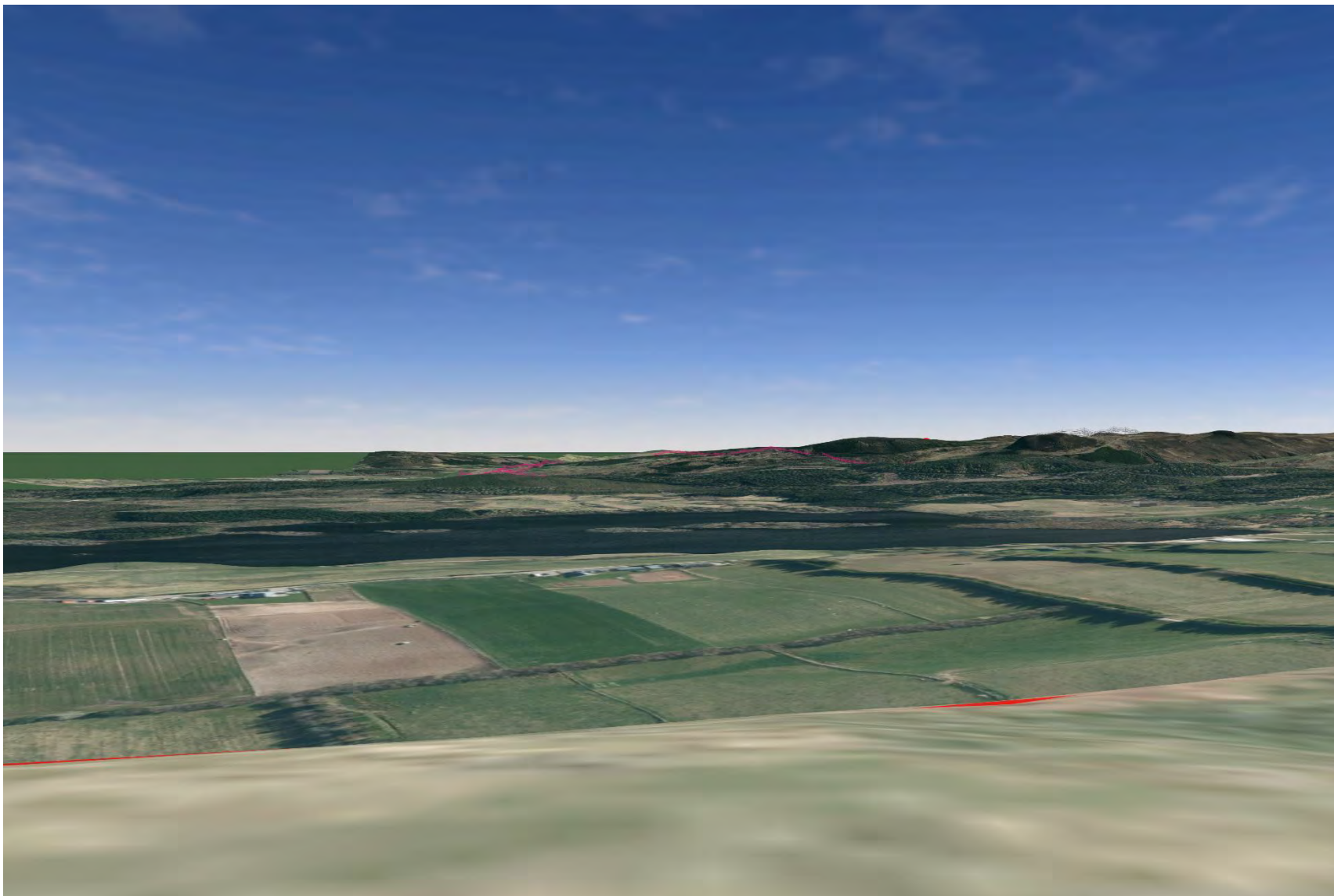


Plate 967: SM1672 - CHVP_179 - towards Proposed Development and valley (225°)

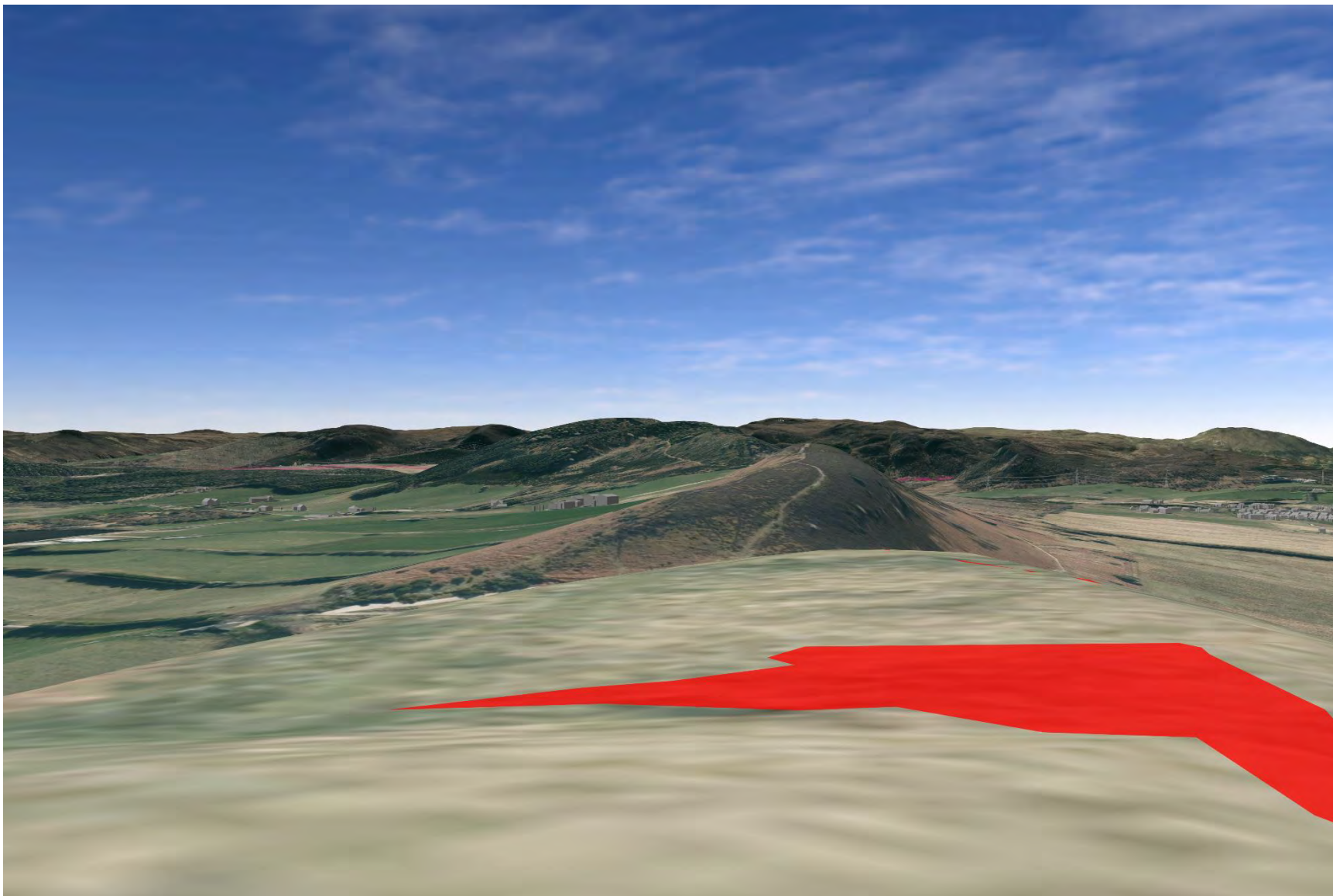


Plate 968: SM1672 - CHVP_179 - towards Proposed Development and valley (270°)



Plate 969: SM1672 - CHVP_179 - towards Proposed Development and River Peffery (315°)



Plate 970: LB24513 - CHVP_180 - towards Proposed Development and key environs (0°)



Plate 971: LB24513 - CHVP_180 - towards Proposed Development and key environs (225°)

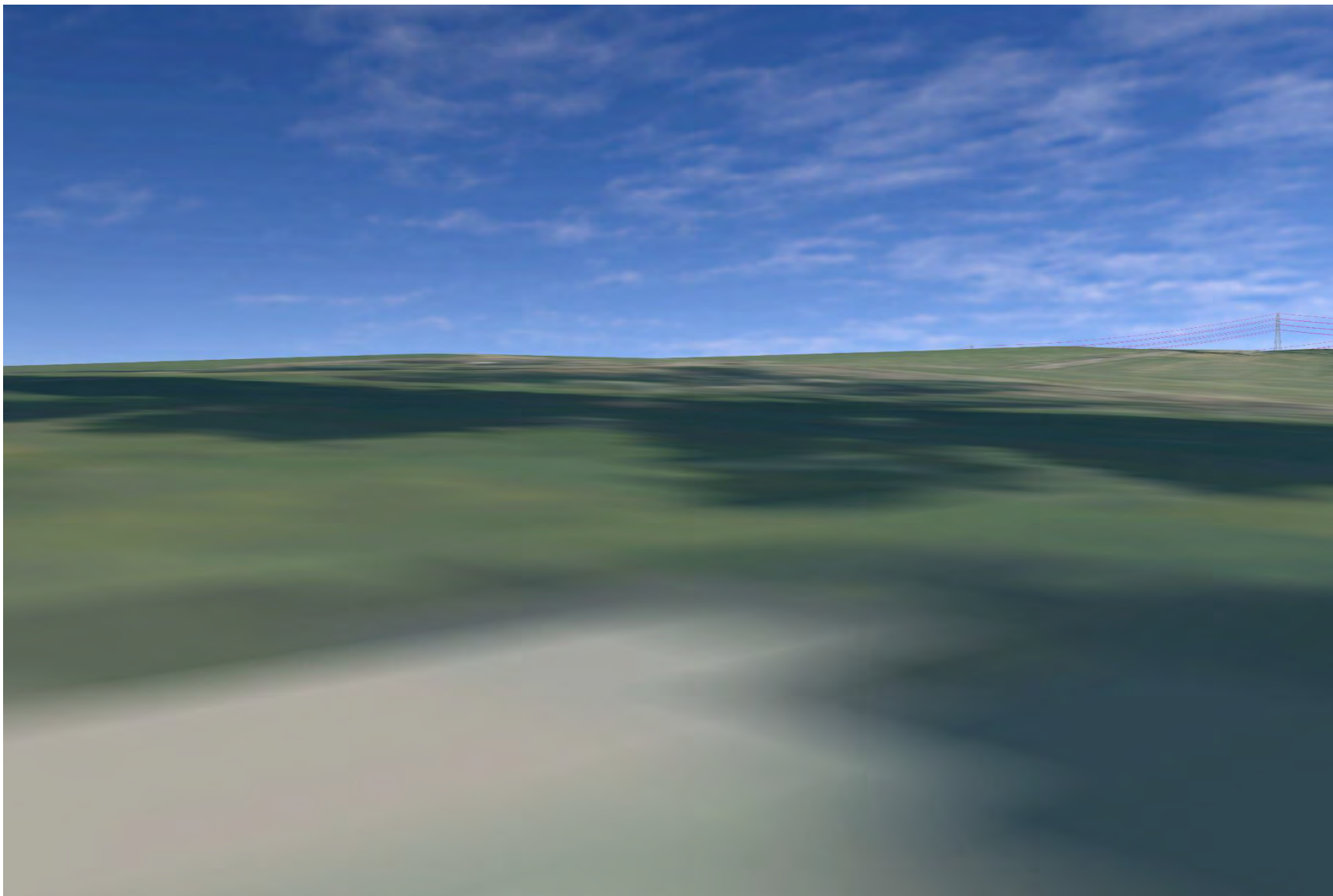


Plate 972: LB24513 - CHVP_180 - towards Proposed Development and key environs (270°)

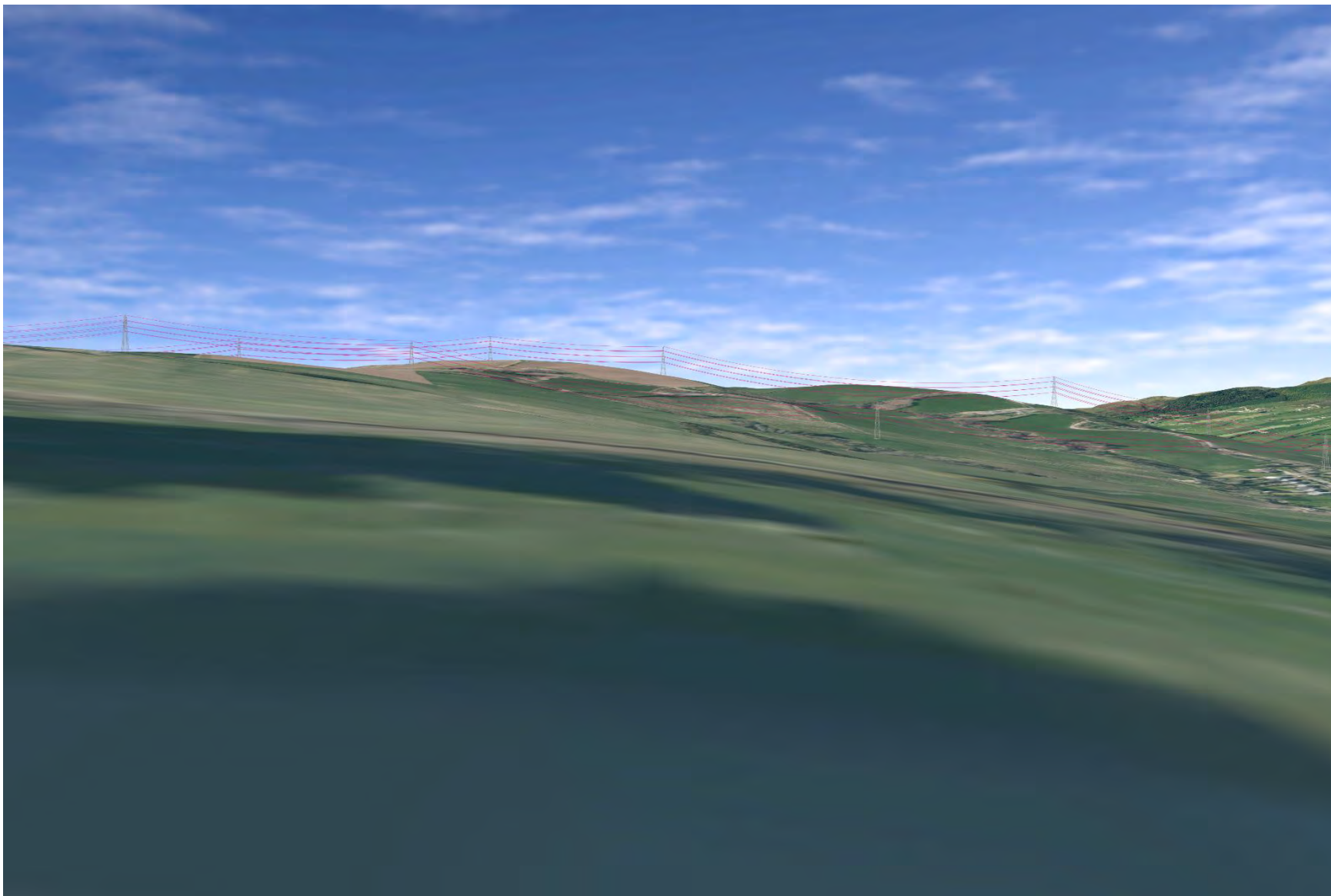


Plate 973: LB24513 - CHVP_180 - towards Proposed Development and key environs (315°)

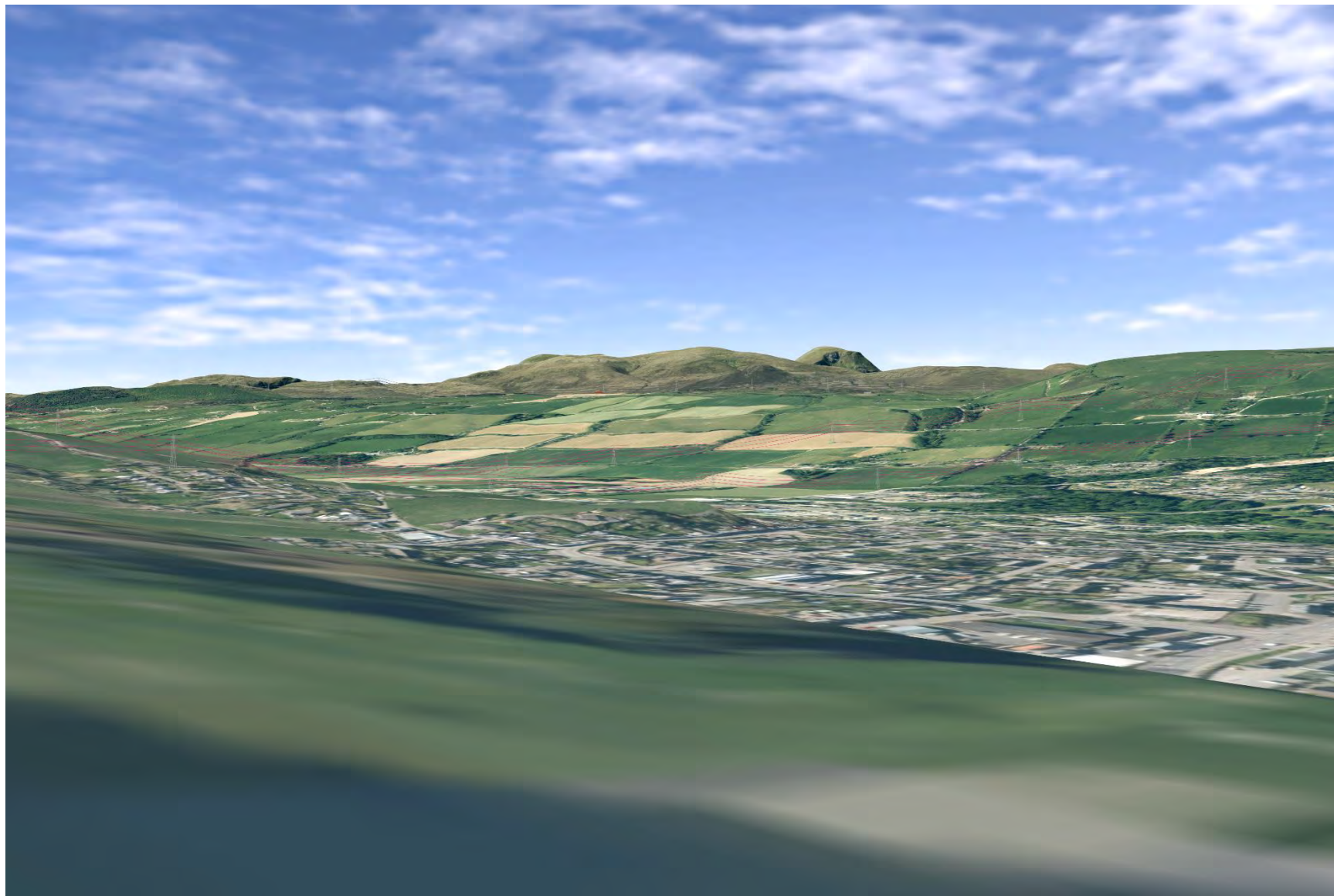


Plate 974: GDL00370 - CHVP_181 - from northeastern part of garden towards internal areas and Proposed Development (0°)

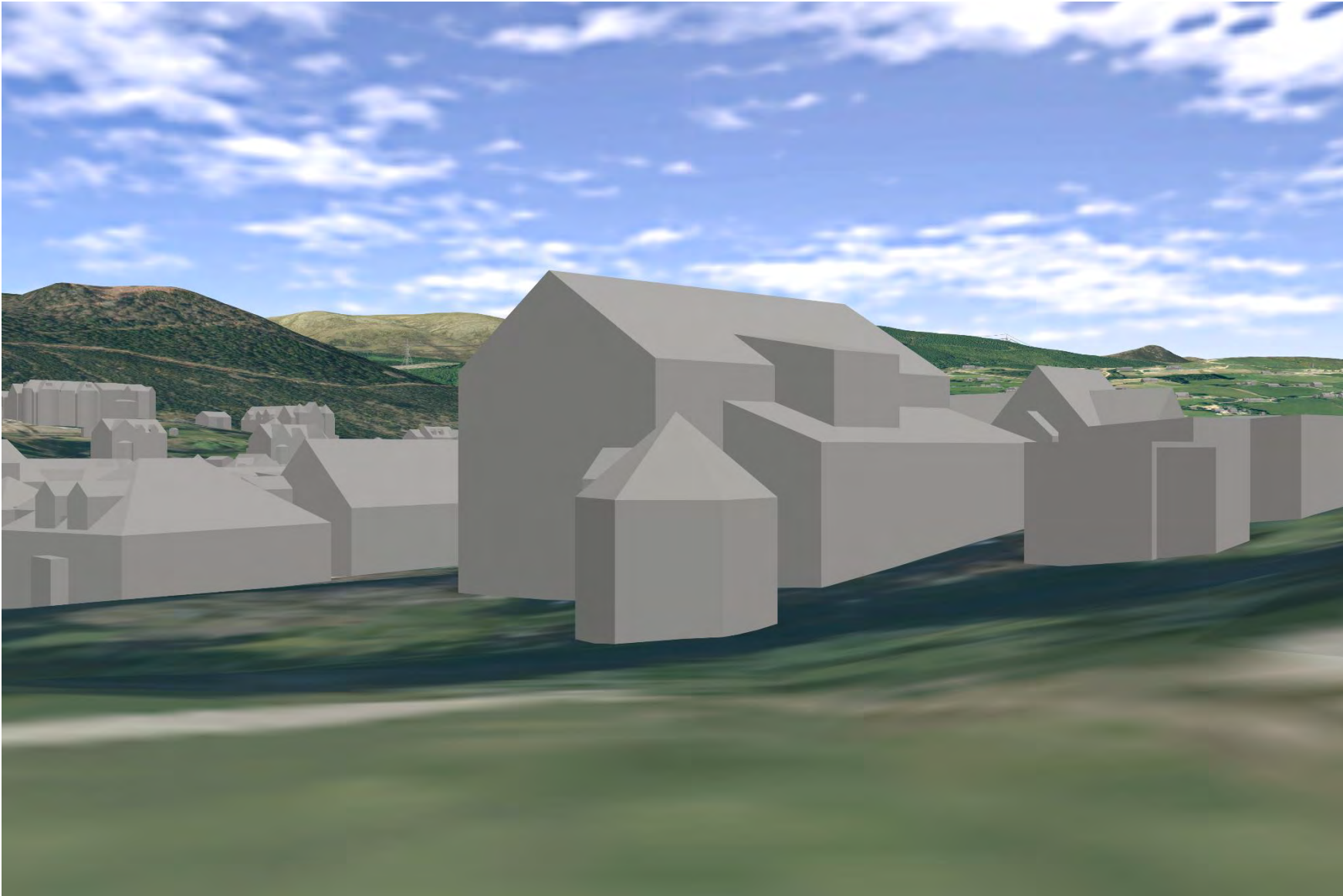


Plate 975: GDL00370 - CHVP_181 - from northeastern part of garden towards internal areas and Proposed Development (180°)

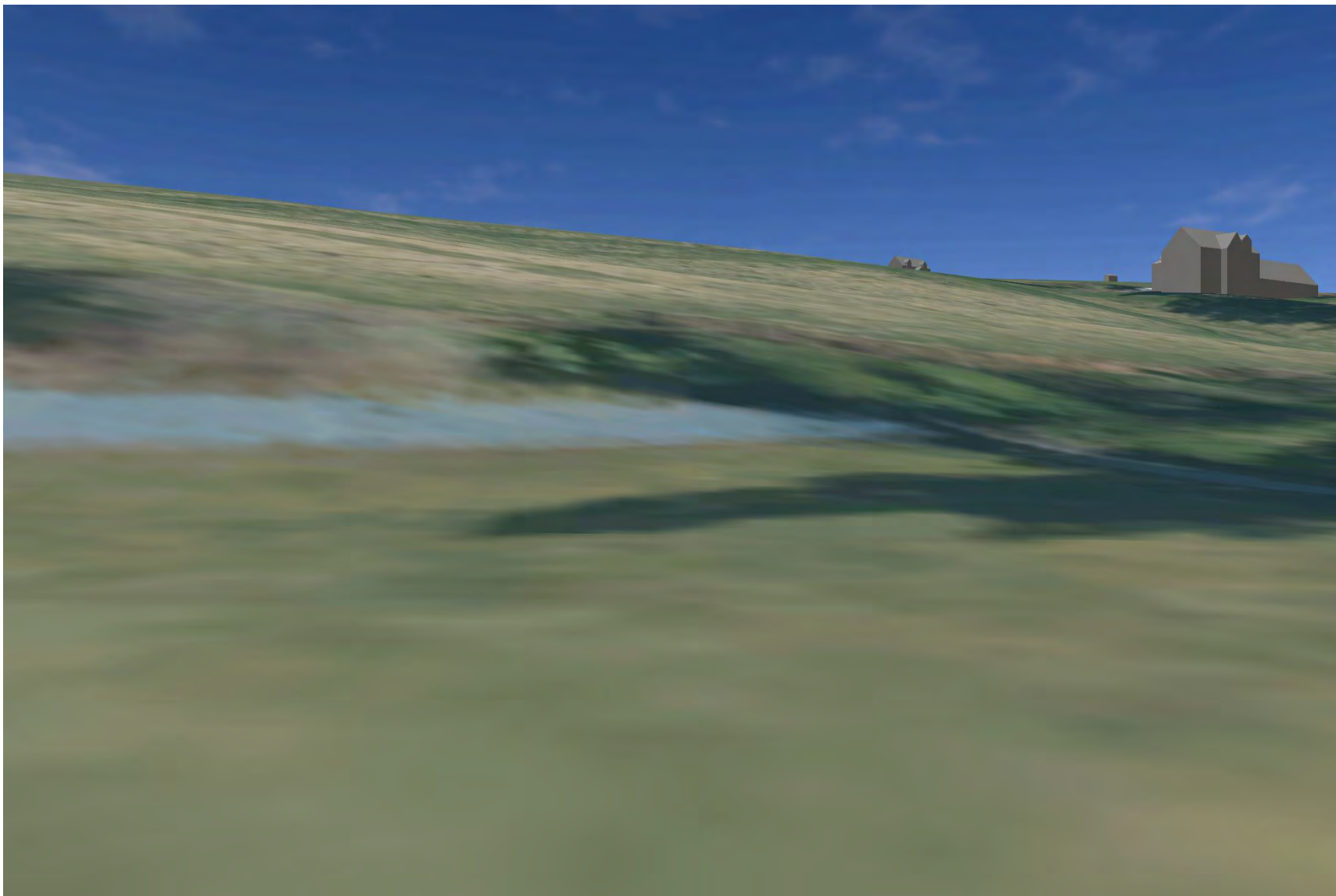


Plate 976: GDL00370 - CHVP_181 - from northeastern part of garden towards internal areas and Proposed Development (225°)



Plate 977: GDL00370 - CHVP_181 - from northeastern part of garden towards internal areas and Proposed Development (270°)

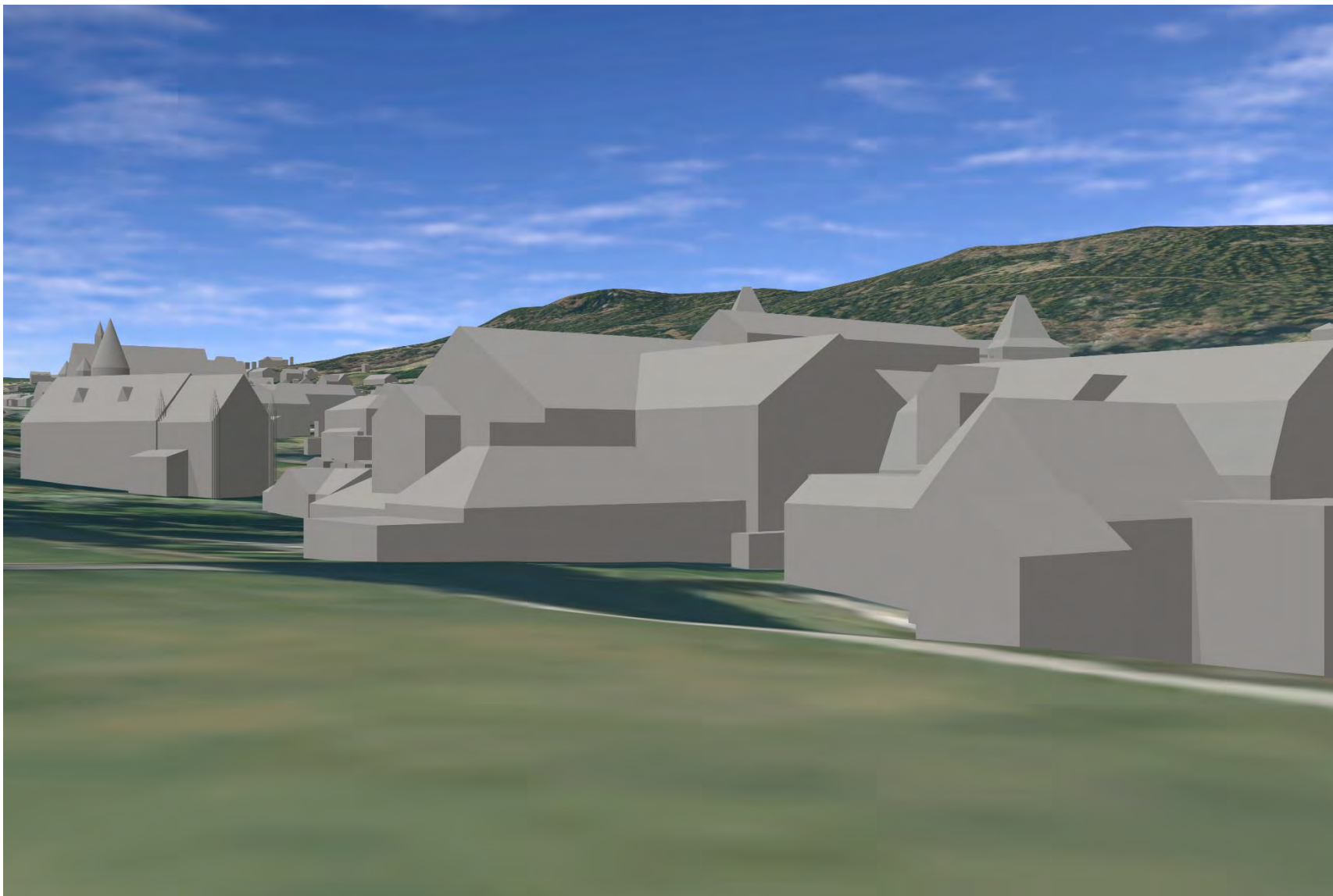


Plate 978: GDL00370 - CHVP_181 - from northeastern part of garden towards internal areas and Proposed Development (315°)



Plate 979: GDL00370 - CHVP_182 - from trail from Knock Farrel towards GDL (270°)



Plate 980: SM3987 - CHVP_184 - towards Proposed Development and Loch Kinellan (0°)

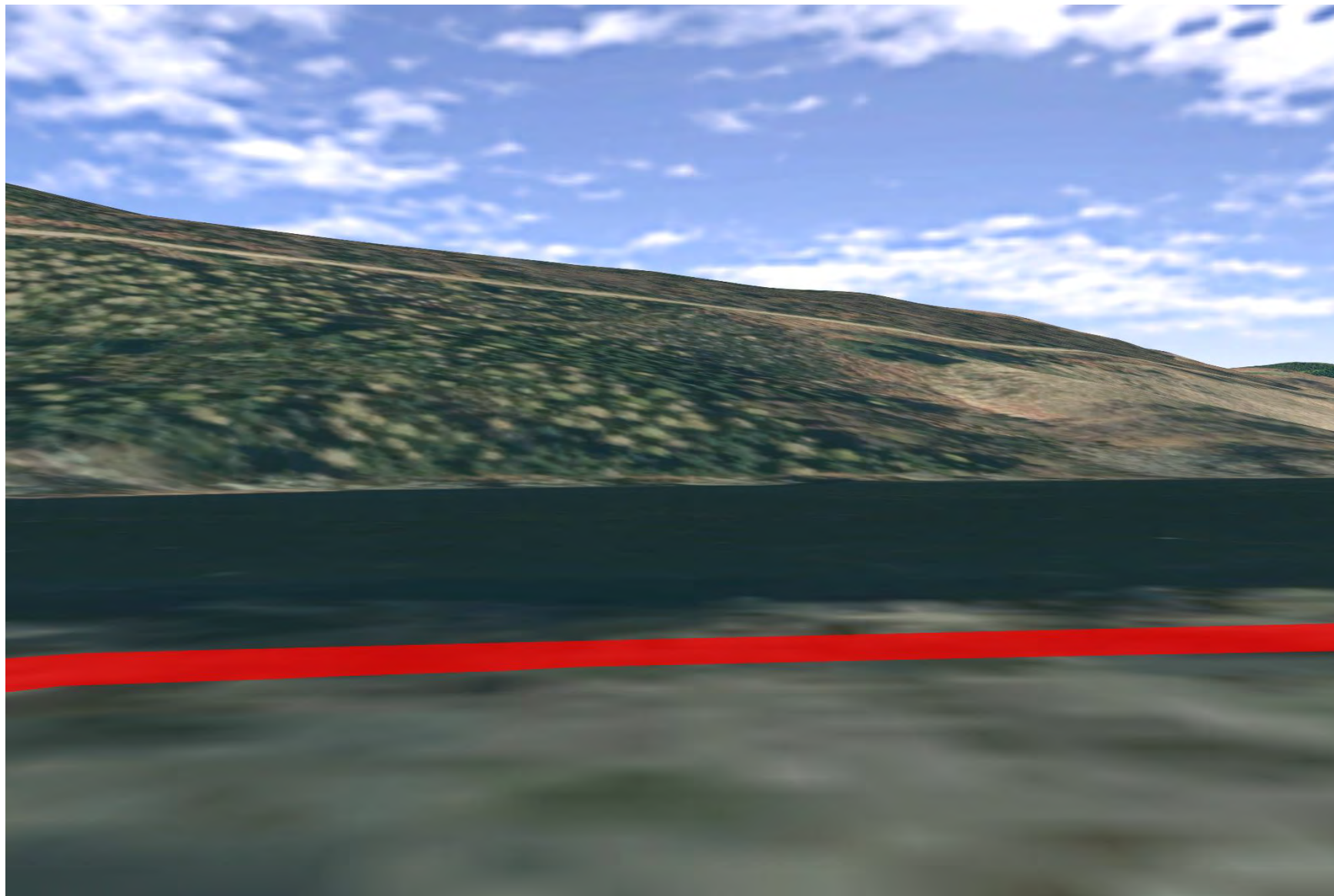


Plate 981: SM3987 - CHVP_184 - towards Proposed Development and Loch Kinellan (45°)

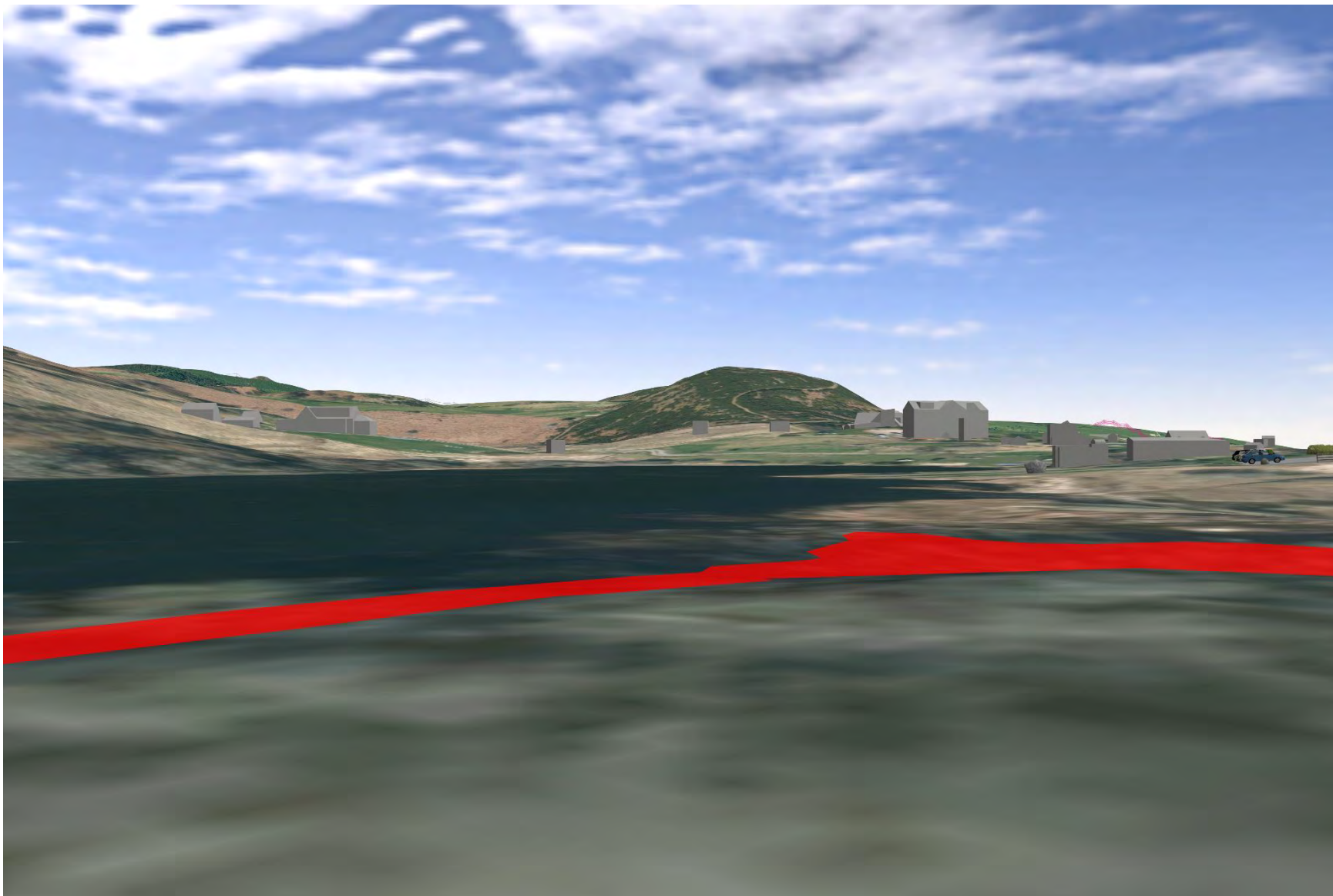


Plate 982: SM3987 - CHVP_184 - towards Proposed Development and Loch Kinellan (180°)

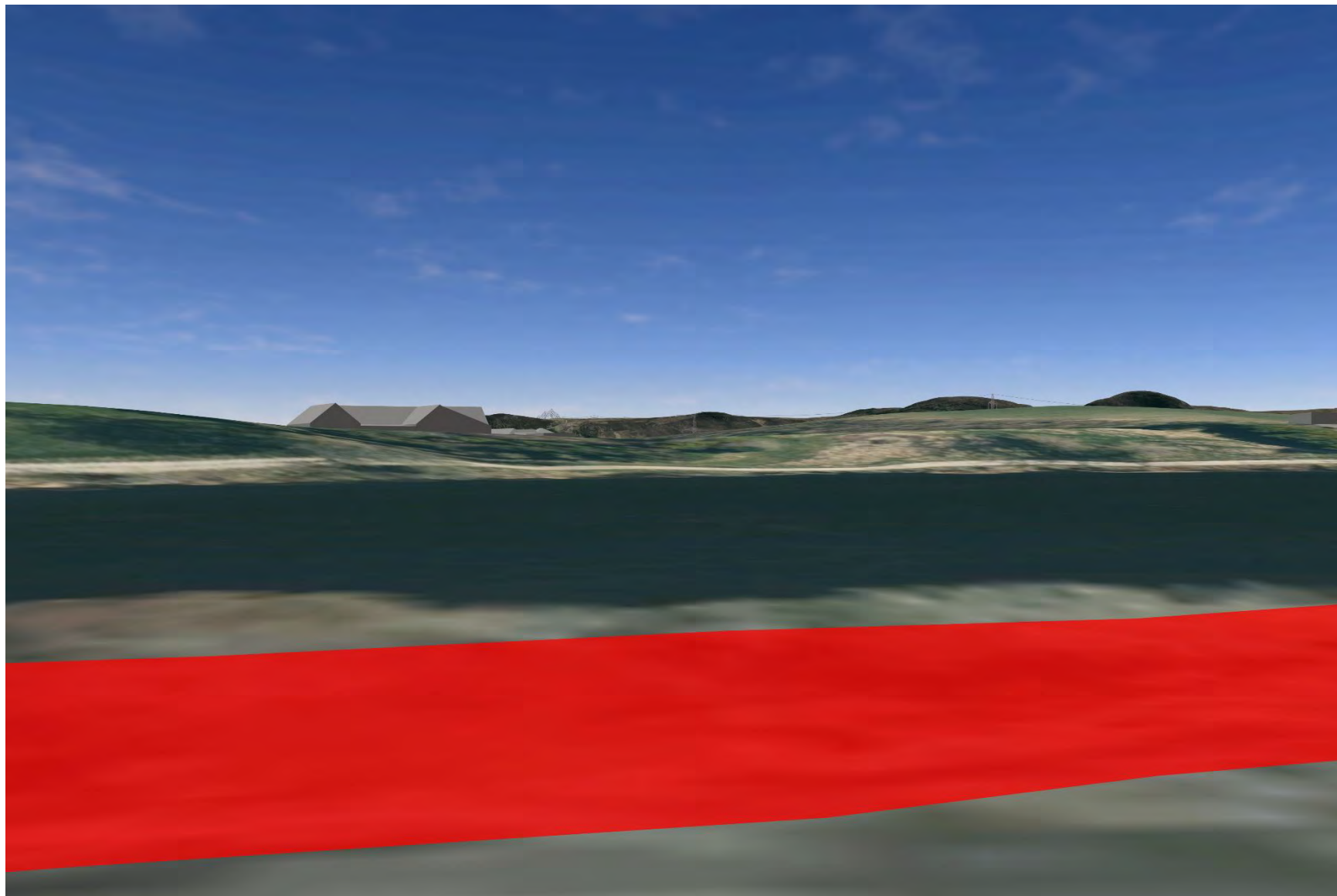


Plate 983: SM3987 - CHVP_184 - towards Proposed Development and Loch Kinellan (225°)

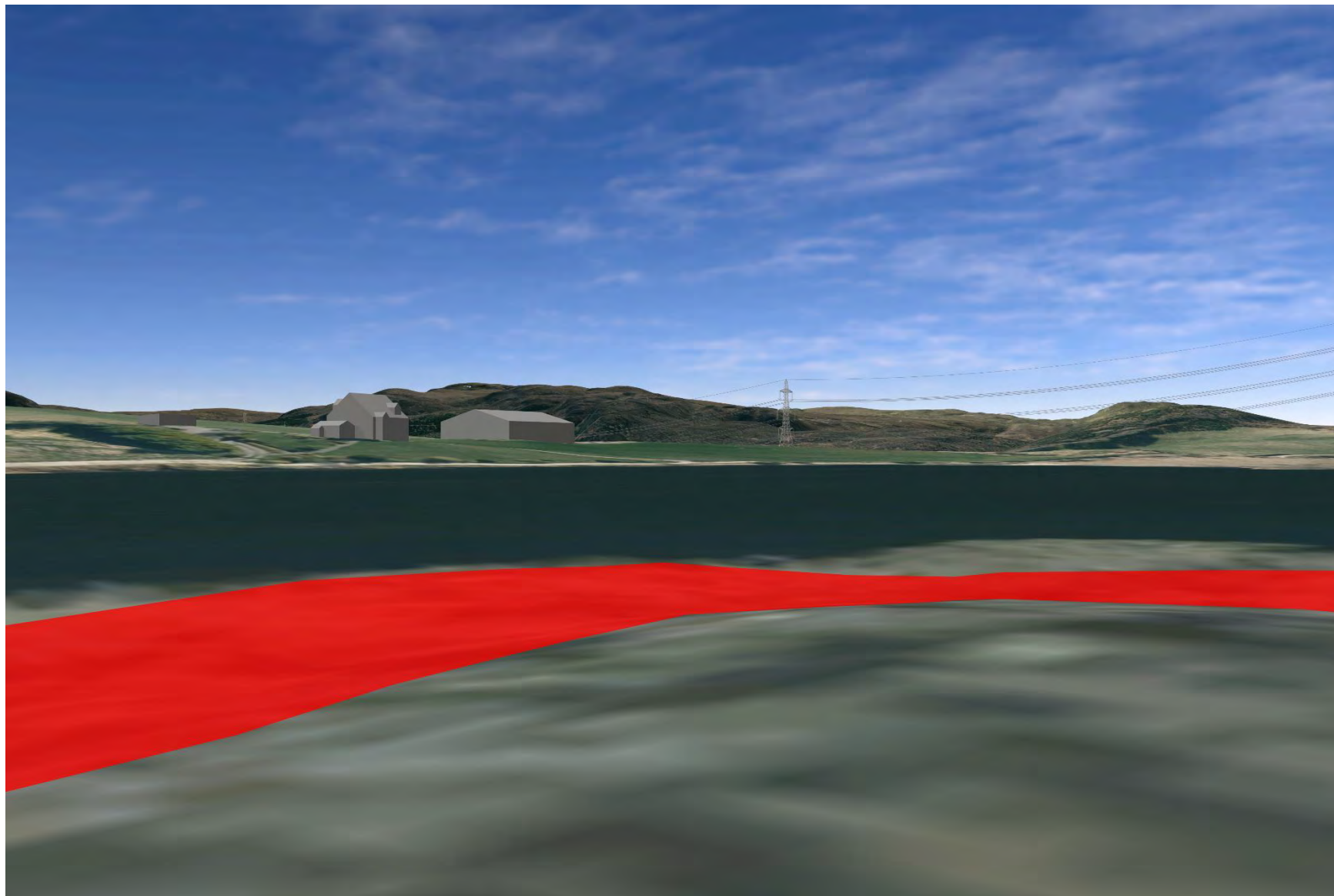


Plate 984: SM3987 - CHVP_184 - towards Proposed Development and Loch Kinellan (270°)

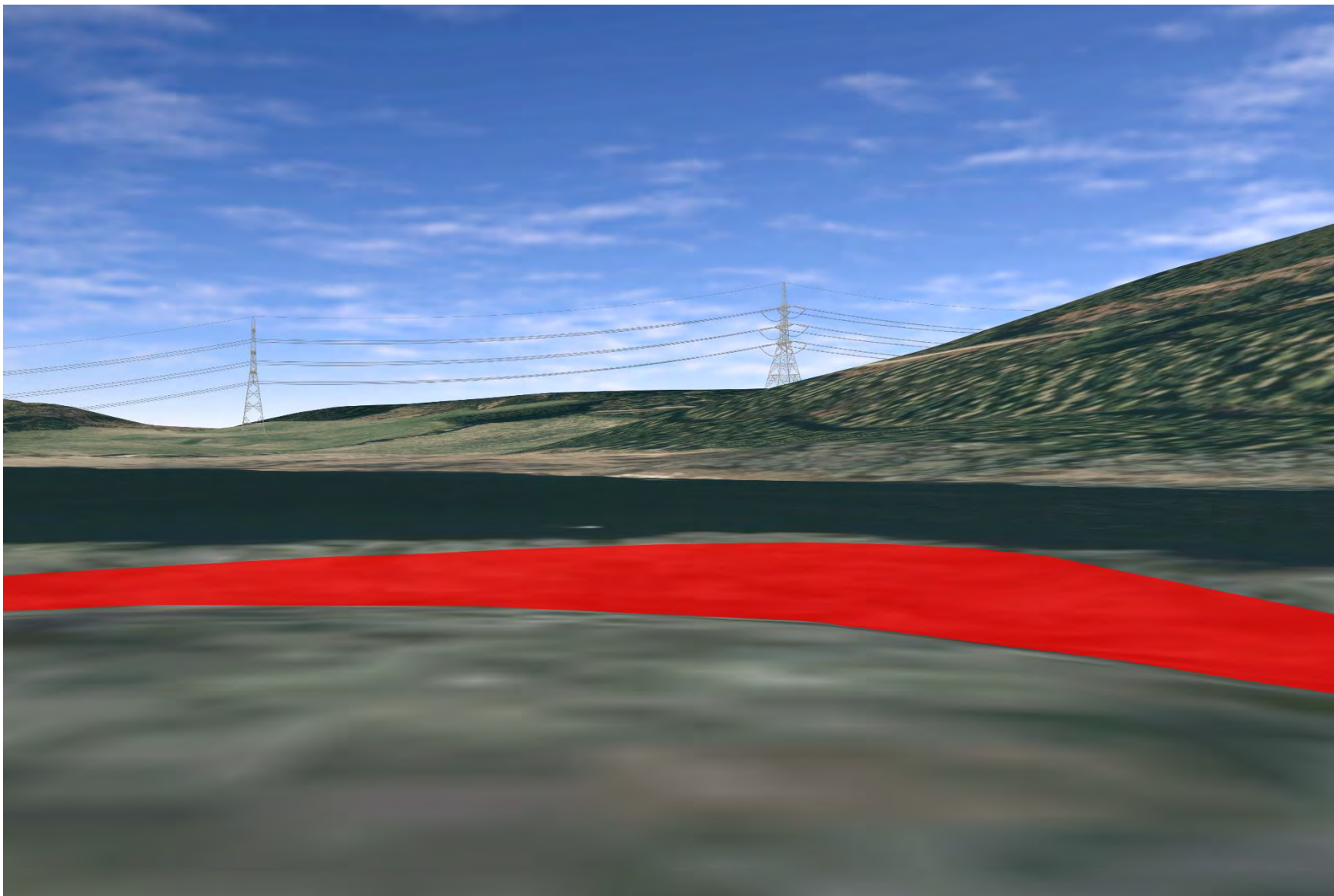


Plate 985: SM3987 - CHVP_184 - towards Proposed Development and Loch Kinellan (315°)

