



*Plate 25: Building (Asset 155.1) forming west side of farmstead, facing north-northeast*



*Plate 26: Building (Asset 155.2) forming east side of farmstead, facing east-southeast*



*Plate 27: Building (Asset 155.3), facing southwest*



*Plate 28: Pen (Asset 155.5) attached to building (Asset 155.2), facing north-northwest*



*Plate 29: Enclosure dyke (Asset 115.6), facing west*



*Plate 30: Possible storage pit (Asset 155.7), facing north*



*Plate 31: Concrete block (Asset 155.4) associated with farmstead (group Asset 155), facing southwest*



*Plate 32: Mound (Asset 610), facing southeast*



*Plate 33: Drainage ditch (Asset 609), facing northwest*



*Plate 34: View over improved ground (Asset 608.3), facing west*



*Plate 35: Quarry (Asset 607), facing northeast*



*Plate 36: Peat cutting (Asset 1010.1), facing south*



*Plate 37: Peat cutting (Asset 1010.2), facing southwest*



*Plate 38: Stone slab (Asset 1011), facing southwest*



*Plate 39: Enclosure dyke (Asset 681), facing north*



*Plate 40: Bank-defined structure (Asset 682), facing north-northwest*



*Plate 41: Peat cutting (Asset 679), facing northeast*



*Plate 42: Peat cutting (Asset 680), facing east*



*Plate 43: Degraded stone and turf dyke (Asset 678), facing northwest*



*Plate 44: Mound (Asset 677), facing northeast*



*Plate 45: Possible hut circle (Asset 676), facing south*



*Plate 46: Ditch and bank (Asset 674), facing northeast*



*Plate 47: Clearance cairn (Asset 675), facing east-northeast*



*Plate 48: Dyke (Asset 673), facing north*



*Plate 49: Quarry (Asset 672), facing northeast*



*Plate 50: Hut circle (Asset 670), facing southeast*



*Plate 51: Shieling (Asset 671), facing south-southwest*



*Plate 52: Small hollow, possible quarry, (Asset 669), facing north*



*Plate 53: Turf bank and ditch (Asset 668), facing northeast*



*Plate 54: Peat cutting (Asset 611), facing south*



*Plate 55: Enclosure (Asset 613), facing northwest*



*Plate 56: Track (Asset 612) through enclosure (Asset 613), facing southwest*



*Plate 57: Mound (Asset 614), possible building, facing south-southeast*



*Plate 58: Mound (Asset 615), possible building, facing north-northwest*



*Plate 59: Possible building footings (Asset 616), facing south*



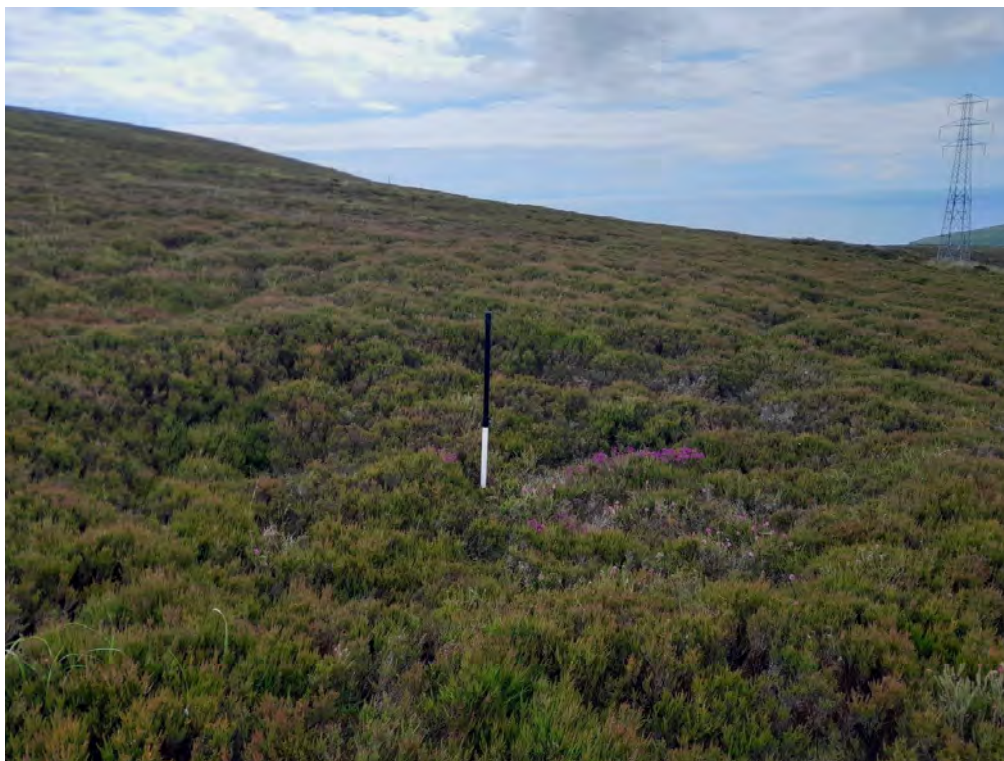
*Plate 60: Drainage ditch and associated bank (Asset 618), facing south-southeast*



*Plate 61: Drainage ditch and associated bank (Asset 619), facing south-southeast*



*Plate 62: Peat cutting (Asset 620), facing north-northeast*



*Plate 63: Peat cutting (Asset 621), facing south*



*Plate 64: Peat cutting (Asset 622), facing northwest*



*Plate 65: Peat cutting (Asset 624), facing southeast*



*Plate 66: Track (Asset 623), facing northwest*



*Plate 67: Ditch and bank (Asset 667), facing south*



*Plate 68: Shieling (Asset 663), facing southeast*



*Plate 69: Shieling (Asset 665), facing west*



*Plate 70: Shieling (Asset 666), facing northwest*



*Plate 71: Shieling (Asset 664), facing south*



*Plate 72: Degraded stone and turf dyke (Asset 871.1), facing east-northeast*



*Plate 73: Clearance cairn (Asset 871.2), facing west-southwest*



*Plate 74: Farmstead complex (Asset 871), facing north-northwest*



*Plate 75: Crofthouse (Asset 871.4), facing northwest*



*Plate 76: Kale yard (Asset 871.7), facing west*



*Plate 77: Building (Asset 871.6) attached to enclosure (Asset 871.8), facing south-southeast*



*Plate 78: Building footing (Asset 871.3), facing south*



*Plate 79: Track (Asset 871.5) between kale yard (Asset 871.7; right) and revetted portion of enclosure (Asset 871.8), facing south*



*Plate 80: Farmstead complex (Asset 658), with main croft house (Asset 658.2) in centre, facing west*



*Plate 81: South elevation of croft (Asset 658.2), east side*



*Plate 82: Fireplace within crofthouse (Asset 658.2), facing east*



*Plate 83: Enclosure (Asset 658.1) facing northeast*



*Plate 84: Revetted building (Asset 660), facing north*



*Plate 85: Clearance cairn (Asset 659), facing south*



*Plate 86: Long building (Asset 661.2) with smaller building (Asset 661.1) visible on right, facing west-southwest*



*Plate 87: Enclosure (Asset 656), facing southwest*



*Plate 88: Building (Asset 661.1), facing west-southwest*



*Plate 89: Enclosure wall (Asset 661.3) leading to building (Asset 661.1), corner of building (Asset 661.2) visible on right, facing north-northwest*



*Plate 90: Enclosure (Asset 657), facing southeast*



*Plate 91: Building (Asset 655), facing northeast*



*Plate 92: Drystone dyke (Asset 651), facing east*



*Plate 93: Clearance cairn (Asset 662), facing east-southeast*



*Plate 94: Length of drystone dyke (Asset 654), possible remnants of a pen, facing east*



*Plate 95: Possible hut circle (Asset 653), facing north*



*Plate 96: Farmstead complex (Asset 650), facing southwest*



*Plate 97: Crofthouses (Asset 650.3 (front) and 650.2 (back)) with linking revetment dyke (Asset 650.5), facing northeast*



*Plate 98: Crofthouse (Asset 650.2), facing southwest*



*Plate 99: Croft house (Asset 650.3), facing west-northwest*



*Plate 100: Clearance cairn (Asset 650.4), facing east-southeast*



*Plate 101: Revetment wall (Asset 650.1), facing southeast*



*Plate 102: Enclosure (Asset 650.1), facing west*



*Plate 103: Fragment of drystone wall (Asset 652), facing east-northeast*



*Plate 104: Hut circle (Asset 649), facing northwest*



*Plate 105: Hut circle (Asset 648), facing north*



*Plate 106: Crofthouse (Asset 628.1), facing west*



*Plate 107: Revetment dyke (Asset 628.2), facing south-southwest*



*Plate 108: Ditch and bank (Asset 645) with croft house (Asset 628.1) in background, facing east*



*Plate 109: Clearance cairn (Asset 644), facing north*



*Plate 110: Clearance cairn (Asset 646), facing southeast*



*Plate 111: Clearance cairn (Asset 647), facing east*



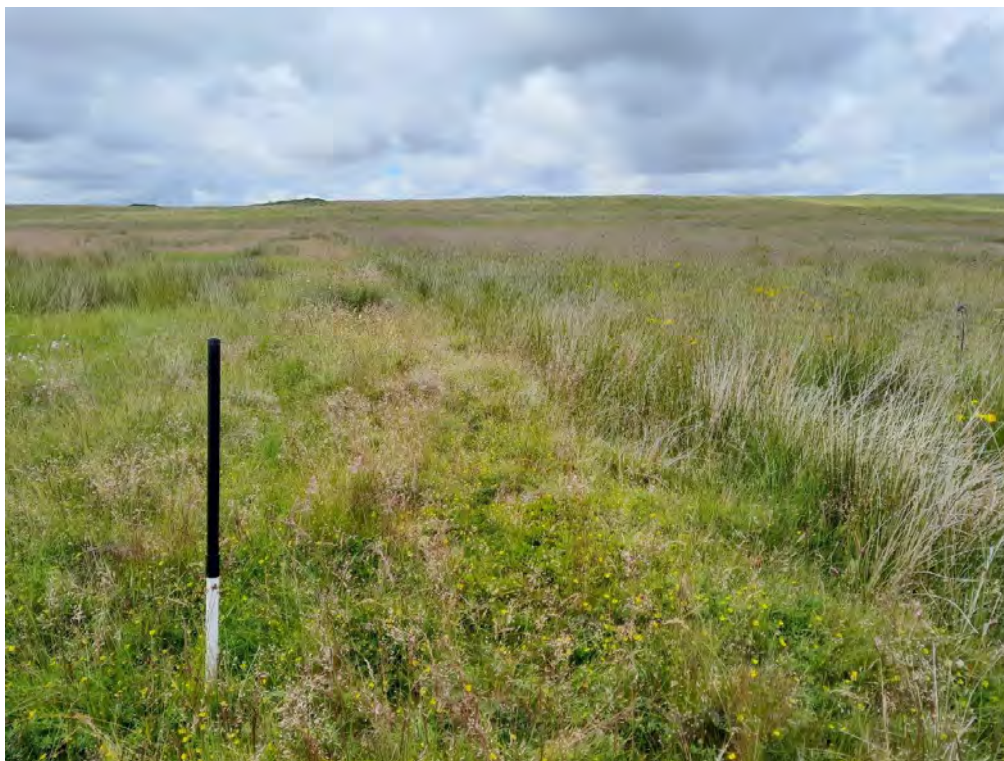
*Plate 112: Drystone dyke (Asset 629), facing east-southeast*



*Plate 113: Footings for building (Asset 631), facing west-northwest*



*Plate 114: Revetment dyke (Asset 630), facing south-southeast*



*Plate 115: Ditch and bank (Asset 643), facing west*



*Plate 116: Drainage ditch (Asset 632.2), facing southeast*



*Plate 117: Turf bank (Asset 633), facing southeast*



*Plate 118: Rectangular hollow (Asset 634), possibly a robbed out building, facing southwest*



*Plate 119: Clearance cairn (Asset 636), facing south*



*Plate 120: Possible structure (Asset 635), potentially a shieling, facing north-northwest*



*Plate 121: Drainage ditch (Asset 641), facing north*



*Plate 122: Quarry (Asset 640), facing northwest*



*Plate 123: Clearance cairn (Asset 637.1), facing west*



*Plate 124: Clearance cairn (Asset 637.2), facing west*



*Plate 125: Hollow (Asset 638), a possible borrow pit or structure, facing east*



*Plate 126: Drystone dyke (Asset 639), facing southwest*



*Plate 127: Circular enclosure (Asset 713), possible sheepfold, facing west-southwest*



*Plate 128: Drainage ditch (Asset 712), facing northwest*



*Plate 129: Crofthouse (Asset 703.2), facing west*



*Plate 130: Byre or cart shed (Asset 703.3), facing north*



*Plate 131: Enclosure (Asset 703.1), a possible kale yard, facing southwest*



*Plate 132: Bridge (Asset 711), facing north*



*Plate 133: Stone and turf dyke (Asset 710), facing east*



*Plate 134: Ruinous crofthouse (Asset 707), facing northeast*



*Plate 135: Ruinous crofthouse (Asset 707) with enclosure (Asset 709) beyond, facing northeast*



*Plate 136: Building (Asset 706), facing northwest*



*Plate 137: Enclosure (Asset 709), facing southeast*



*Plate 138: Clearance cairn (Asset 708) with croft house (Asset 707) beyond, facing south*



*Plate 139: Subterranean structure (Asset 704), facing southwest*



*Plate 140: Subterranean structure (Asset 704), facing south*



*Plate 141: Drystone dyke (Asset 700), facing south*



*Plate 142: Ditch (Asset 699), facing south*



*Plate 143: Relict track (Asset 701), facing north*



*Plate 144: Hollow (Asset 781), facing southwest*