

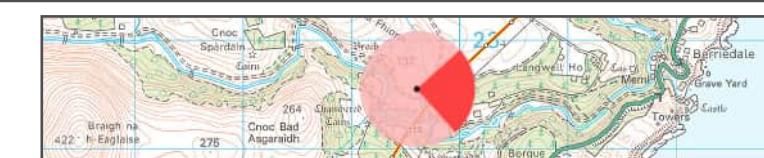
Figure: CHVP 23.1a
 Cultural Heritage Viewpoint 23: Turaln Rock
Beauly to Spittal OHL



OS reference: 309619 922545
 Eye Level: 90m AOD
 Direction of view: 90.4°
 Distance to Development: 0.19 km

Horizontal field of view: (90° cylindrical projection)
 Principal distance: 812.5mm

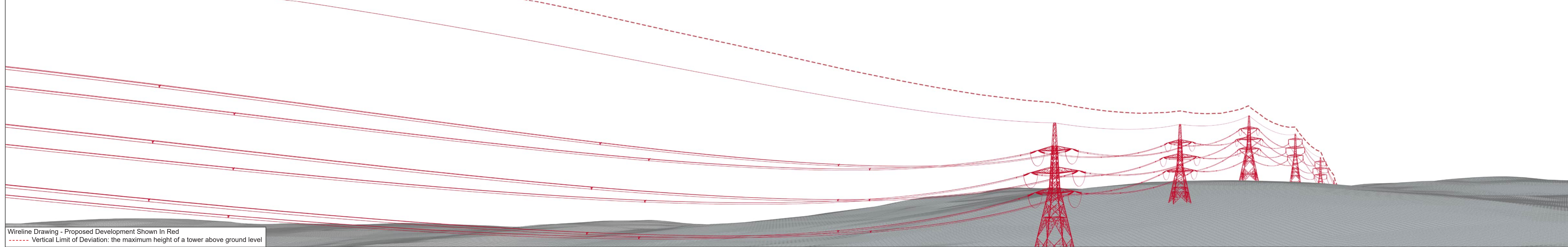
Camera: Canon EOS R5
 Lens: 50mm (Canon AF 50mm f/1.2)
 Camera height: 1.5m AGL
 Date and time: 30/01/2025 15:00



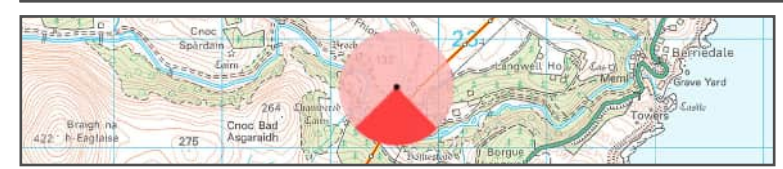


Baseline Photograph

This image provides landscape and visual context only



Wireline Drawing - Proposed Development Shown In Red
 - - - - Vertical Limit of Deviation: the maximum height of a tower above ground level



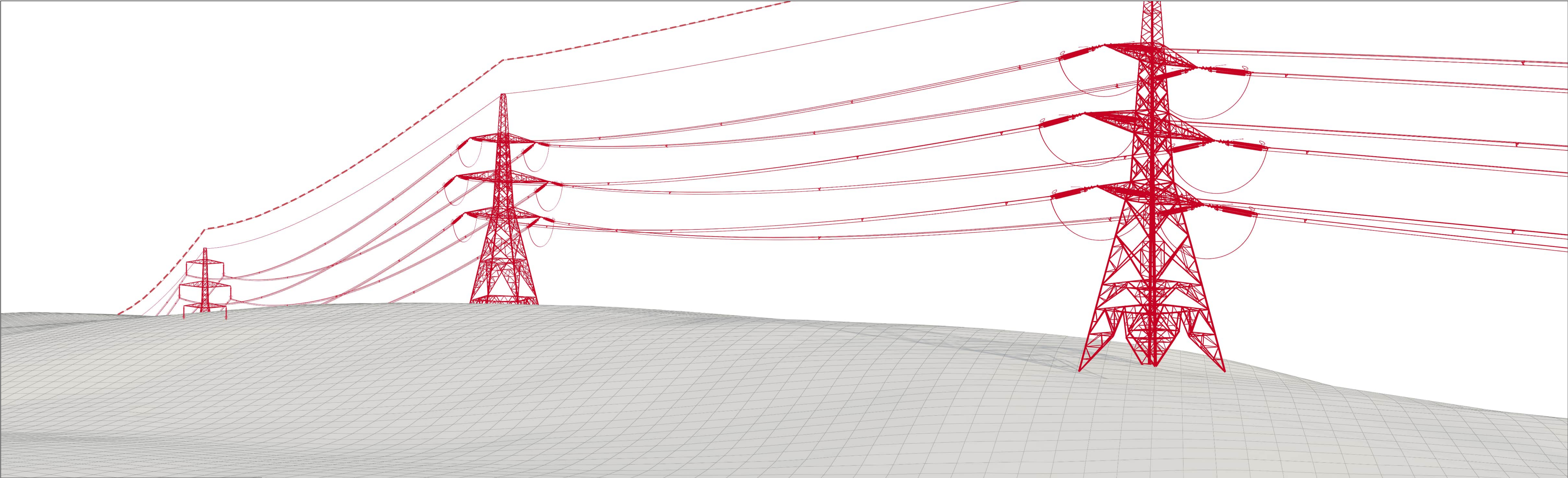
OS reference: 309619 922545
 Eye Level: 90m AOD
 Direction of view: 180.5°
 Distance to Development: 0.19 km

Horizontal field of view: (90° cylindrical projection)
 Principal distance: 812.5mm

Camera: Canon EOS R5
 Lens: 50mm (Canon AF 50mm f/1.2)
 Camera height: 1.5m AGL
 Date and time: 30/01/2025 15:00



Figure: CHVP 23.1b
 Cultural Heritage Viewpoint 23: Tural Rock
Beauly to Spittal OHL



Wireline Drawing - Proposed Development Shown In Red
 - - - - - Vertical Limit of Deviation: the maximum height of a tower above ground level

View flat at a comfortable arm's length

Figure: CHVP 23.1c
 Cultural Heritage Viewpoint 23: Turnal Rock
Beauly to Spittal OHL



OS reference: 309619 922545
 Eye Level: 90m AOD
 Direction of view: 135°
 Distance to Development: 0.19 km

Horizontal field of view: 53.5° (planar projection)
 Principal distance: 812.5mm
 Paper size: 841 x 297 mm
 Correct printed image size: 820 x 260 mm

Camera: Canon EOS R5
 Lens: 50mm (Canon AF 50mm f/1.2)
 Camera height: 1.5m AGL
 Date and time: 30/01/2025 15:00



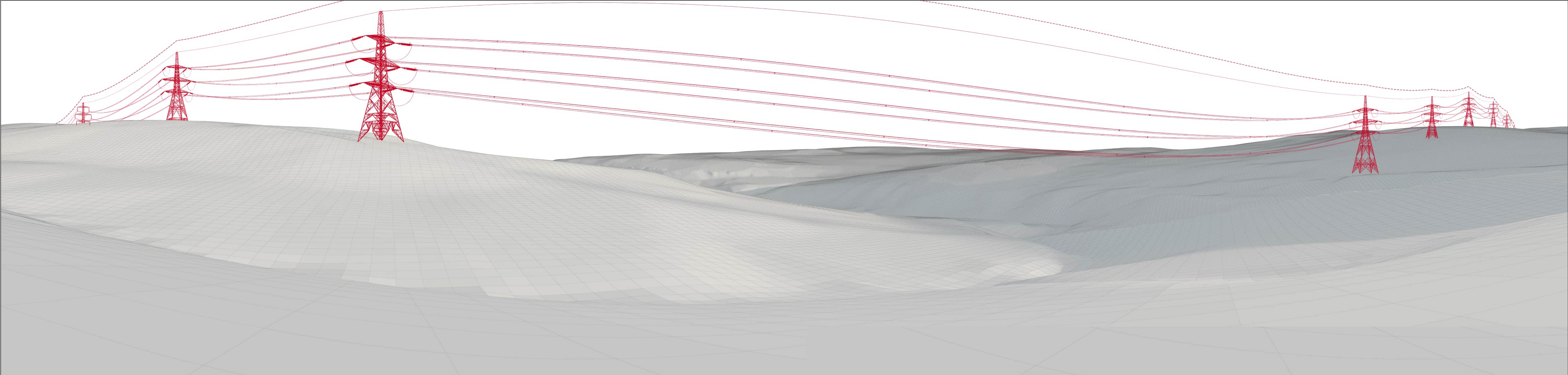
Photomontage

View flat at a comfortable arm's length

OS reference:	309619 922545	Horizontal field of view:	53.5° (planar projection)	Camera:	Canon EOS R5
Eye Level:	90m AOD	Principal distance:	812.5mm	Lens:	50mm (Canon AF 50mm f/1.2)
Direction of view:	135°	Paper size:	841 x 297 mm	Camera height:	1.5m AGL
Distance to Development:	0.19 km	Correct printed image size:	820 x 260 mm	Date and time:	30/01/2025 15:00



Figure: CHVP 23.1d
Cultural Heritage Viewpoint 23: Turnal Rock
Beauly to Spittal OHL



Wireline Drawing - Proposed Development Shown In Red
 - - - - Vertical Limit of Deviation: the maximum height of a tower above ground level

Figure: CHVP 23.1e
 Cultural Heritage Viewpoint 23: Turnal Rock
Beauly to Spittal OHL



OS reference: 309619 922545
 Eye Level: 90m AOD
 Direction of view: 90.4°
 Distance to Development: 0.19 km

Horizontal field of view: 169.6° (cylindrical projection)
 Principal distance: 812.5mm
 Paper size: 841 x 297 mm
 Correct printed image size: 820 x 260 mm

Camera: Canon EOS R5
 Lens: 50mm (Canon AF 50mm f/1.2)
 Camera height: 1.5m AGL
 Date and time: 30/01/2025 15:00

View flat at a comfortable arm's length



OS reference: 309619 922545
 Eye Level: 90m AOD
 Direction of view: 90.4°
 Distance to Development: 0.19 km

Horizontal field of view: 169.6° (cylindrical projection)
 Principal distance: 812.5mm
 Paper size: 841 x 297 mm
 Correct printed image size: 820 x 260 mm

Camera: Canon EOS R5
 Lens: 50mm (Canon AF 50mm f/1.2)
 Camera height: 1.5m AGL
 Date and time: 30/01/2025 15:00



View flat at a comfortable arm's length

Figure: CHVP 23.1f
 Cultural Heritage Viewpoint 23: Turnal Rock

Beauly to Spittal OHL