

Wireline Drawing - Proposed Development Shown In Red
 - - - - Vertical Limit of Deviation: the maximum height of a tower above ground level

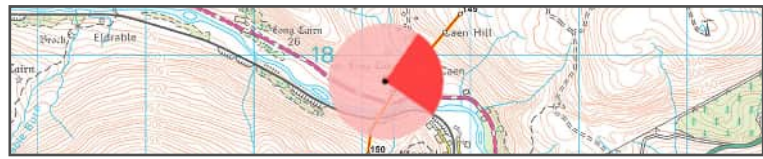
Figure: CHVP 31.1a
 Cultural Heritage Viewpoint 31: Caen
Beauly to Spittal OHL

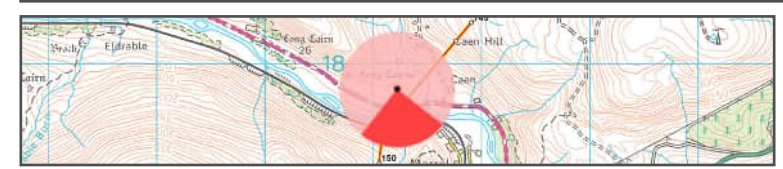
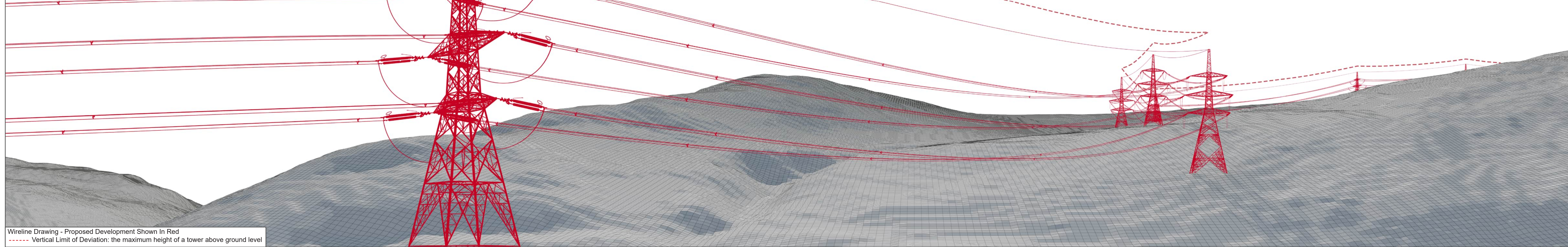


OS reference: 301223 917772
 Eye Level: 41m AOD
 Direction of view: 82.7°
 Distance to Development: 0.35 km

Horizontal field of view: (90° cylindrical projection)
 Principal distance: 812.5mm

Camera: Canon EOS R5
 Lens: 50mm (Canon AF 50mm f/1.2)
 Camera height: 1.5m AGL
 Date and time: 05/03/2025 11:50





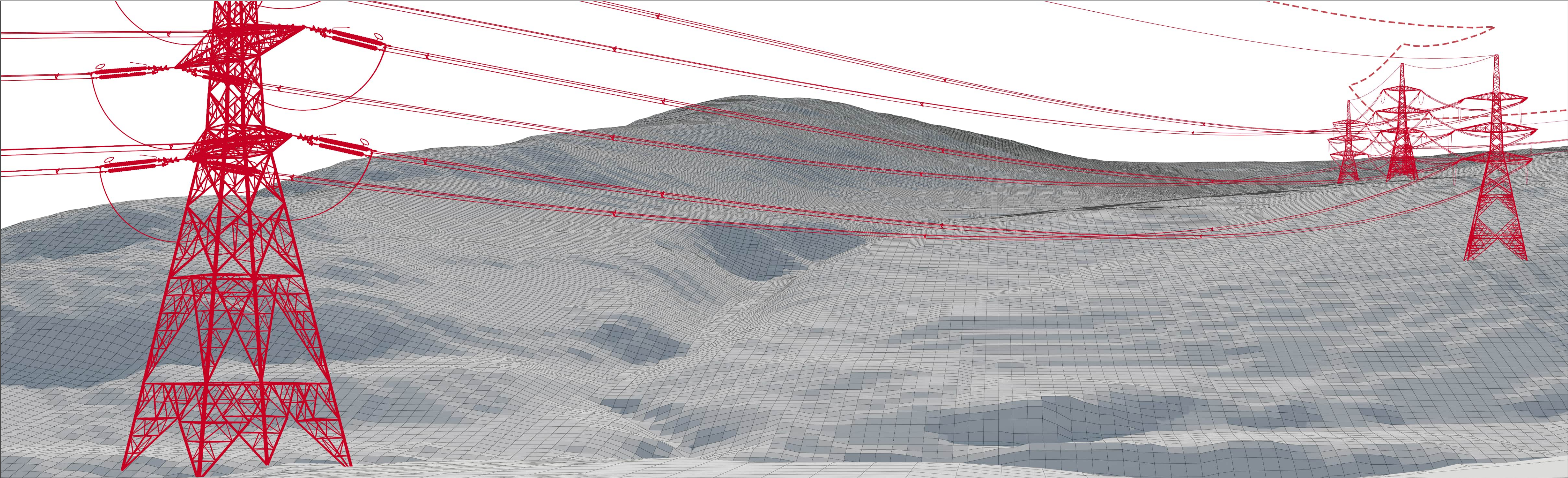
OS reference: 301223 917772
 Eye Level: 41m AOD
 Direction of view: 172.7°
 Distance to Development: 0.35 km

Horizontal field of view: (90° cylindrical projection)
 Principal distance: 812.5mm

Camera: Canon EOS R5
 Lens: 50mm (Canon AF 50mm f/1.2)
 Camera height: 1.5m AGL
 Date and time: 05/03/2025 11:50



Figure: CHVP 31.1b
 Cultural Heritage Viewpoint 31: Caen
Beauly to Spittal OHL



Wireline Drawing - Proposed Development Shown In Red
 - - - - - Vertical Limit of Deviation: the maximum height of a tower above ground level

View flat at a comfortable arm's length

Figure: CHVP 31.1c
 Cultural Heritage Viewpoint 31: Caen
Beauly to Spittal OHL



OS reference: 301223 917772
 Eye Level: 41m AOD
 Direction of view: 172.7°
 Distance to Development: 0.35 km

Horizontal field of view: 53.5° (planar projection)
 Principal distance: 812.5mm
 Paper size: 841 x 297 mm
 Correct printed image size: 820 x 260 mm

Camera: Canon EOS R5
 Lens: 50mm (Canon AF 50mm f/1.2)
 Camera height: 1.5m AGL
 Date and time: 05/03/2025 11:50



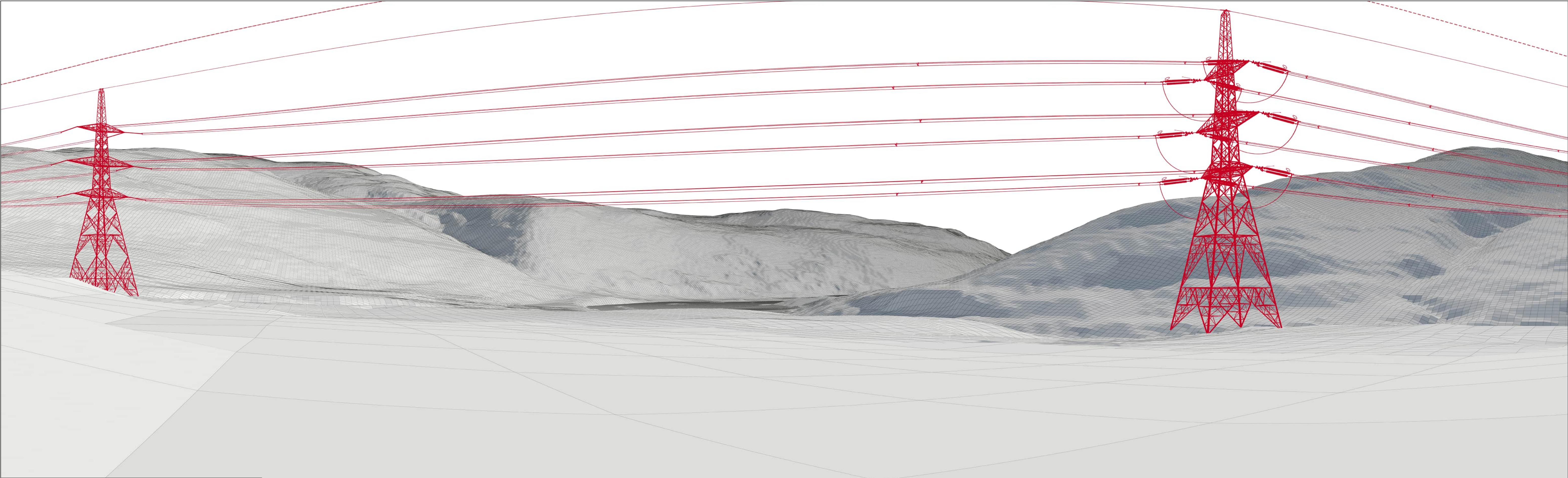
Photomontage

View flat at a comfortable arm's length

OS reference:	301223 917772	Horizontal field of view:	53.5° (planar projection)	Camera:	Canon EOS R5
Eye Level:	41m AOD	Principal distance:	812.5mm	Lens:	50mm (Canon AF 50mm f/1.2)
Direction of view:	172.7°	Paper size:	841 x 297 mm	Camera height:	1.5m AGL
Distance to Development:	0.35 km	Correct printed image size:	820 x 260 mm	Date and time:	05/03/2025 11:50



Figure: CHVP 31.1d
 Cultural Heritage Viewpoint 31: Caen
Beauly to Spittal OHL



Wireline Drawing - Proposed Development Shown In Red
 - - - - Vertical Limit of Deviation: the maximum height of a tower above ground level

View flat at a comfortable arm's length

Figure: CHVP 31.1e
 Cultural Heritage Viewpoint 31: Caen
Beauly to Spittal OHL



OS reference: 301223 917772
 Eye Level: 41m AOD
 Direction of view: 120°
 Distance to Development: 0.35 km

Horizontal field of view: 110° (cylindrical projection)
 Principal distance: 812.5mm
 Paper size: 841 x 297 mm
 Correct printed image size: 820 x 260 mm

Camera: Canon EOS R5
 Lens: 50mm (Canon AF 50mm f/1.2)
 Camera height: 1.5m AGL
 Date and time: 05/03/2025 11:50



Photomontage

View flat at a comfortable arm's length

OS reference:	301223 917772	Horizontal field of view:	110° (cylindrical projection)	Camera:	Canon EOS R5
Eye Level:	41m AOD	Principal distance:	812.5mm	Lens:	50mm (Canon AF 50mm f/1.2)
Direction of view:	120°	Paper size:	841 x 297 mm	Camera height:	1.5m AGL
Distance to Development:	0.35 km	Correct printed image size:	820 x 260 mm	Date and time:	05/03/2025 11:50



Figure: CHVP 31.1f
 Cultural Heritage Viewpoint 31: Caen
Beauly to Spittal OHL