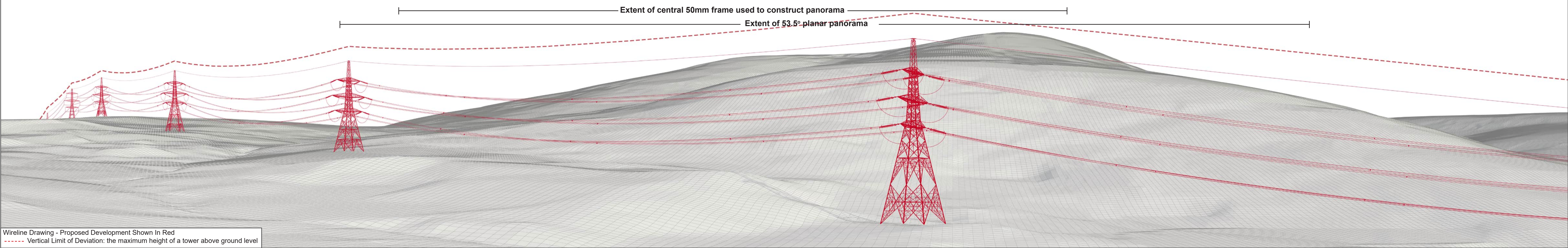




Baseline Photograph

This image provides landscape and visual context only



Wireline Drawing - Proposed Development Shown In Red
 - - - - Vertical Limit of Deviation: the maximum height of a tower above ground level

Figure: CHVP 32.1a
 Cultural Heritage Viewpoint 32: Clach Mhic Mhios
 Beauly to Spittal OHL

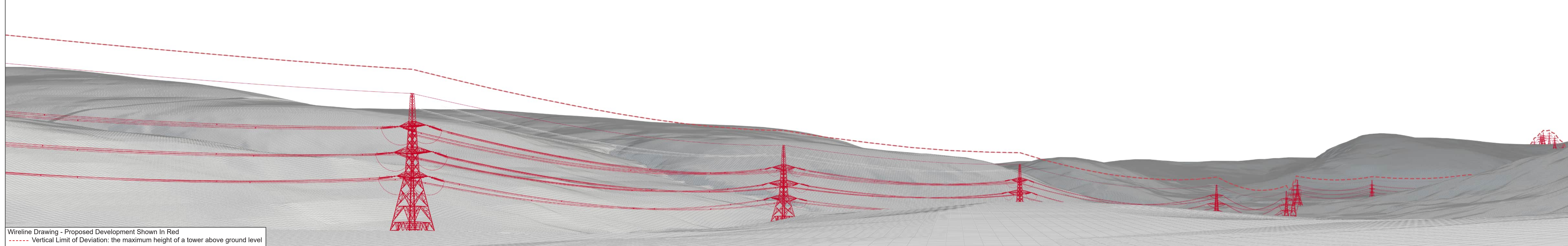


OS reference: 294054 915068
 Eye Level: 237m AOD
 Direction of view: 80.4°
 Distance to Development: 0.33 km

Horizontal field of view: (90° cylindrical projection)
 Principal distance: 812.5mm

Camera: Canon EOS R5
 Lens: 50mm (Canon AF 50mm f/1.2)
 Camera height: 1.5m AGL
 Date and time: 13/02/2025 14:25





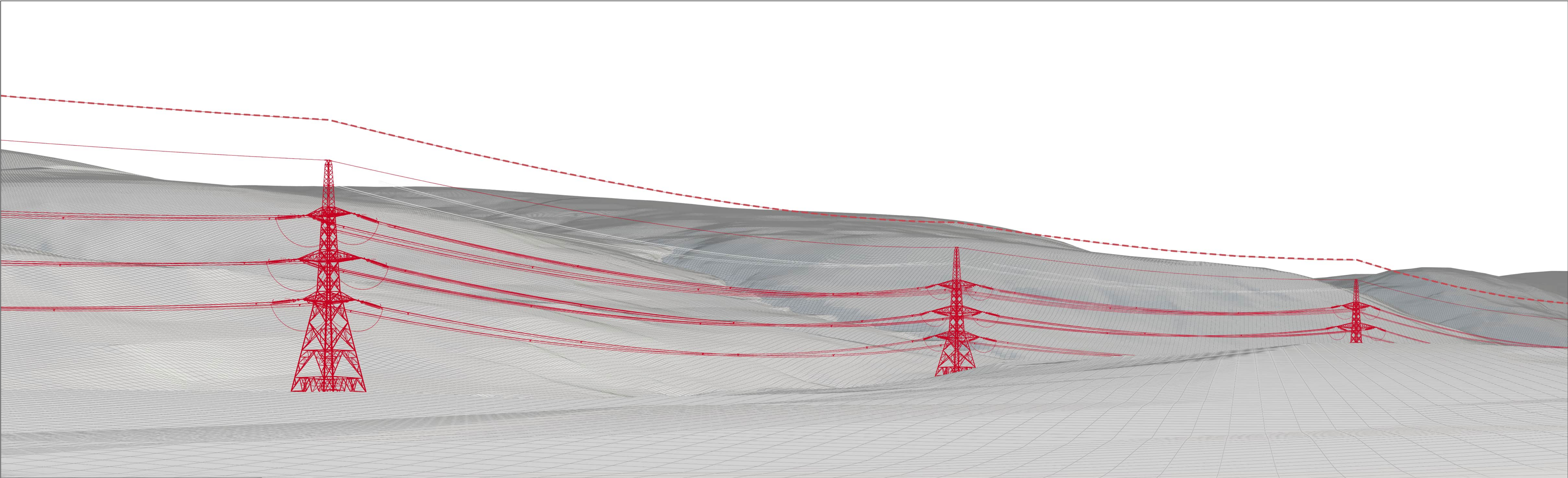
OS reference: 294054 915068
 Eye Level: 237m AOD
 Direction of view: 189.6°
 Distance to Development: 0.33 km

Horizontal field of view: (90° cylindrical projection)
 Principal distance: 812.5mm

Camera: Canon EOS R5
 Lens: 50mm (Canon AF 50mm f/1.2)
 Camera height: 1.5m AGL
 Date and time: 13/02/2025 14:25



Figure: CHVP 32.1b
 Cultural Heritage Viewpoint 32: Clach Mhic Mhios
Beauly to Spittal OHL



Wireline Drawing - Proposed Development Shown In Red
 - - - - - Vertical Limit of Deviation: the maximum height of a tower above ground level

View flat at a comfortable arm's length

Figure: CHVP 32.1c
 Cultural Heritage Viewpoint 32: Clach Mhic Mhios
Beauly to Spittal OHL



OS reference: 294054 915068
 Eye Level: 237m AOD
 Direction of view: 189.6°
 Distance to Development: 0.33 km

Horizontal field of view: 53.5° (planar projection)
 Principal distance: 812.5mm
 Paper size: 841 x 297 mm
 Correct printed image size: 820 x 260 mm

Camera: Canon EOS R5
 Lens: 50mm (Canon AF 50mm f/1.2)
 Camera height: 1.5m AGL
 Date and time: 13/02/2025 14:25



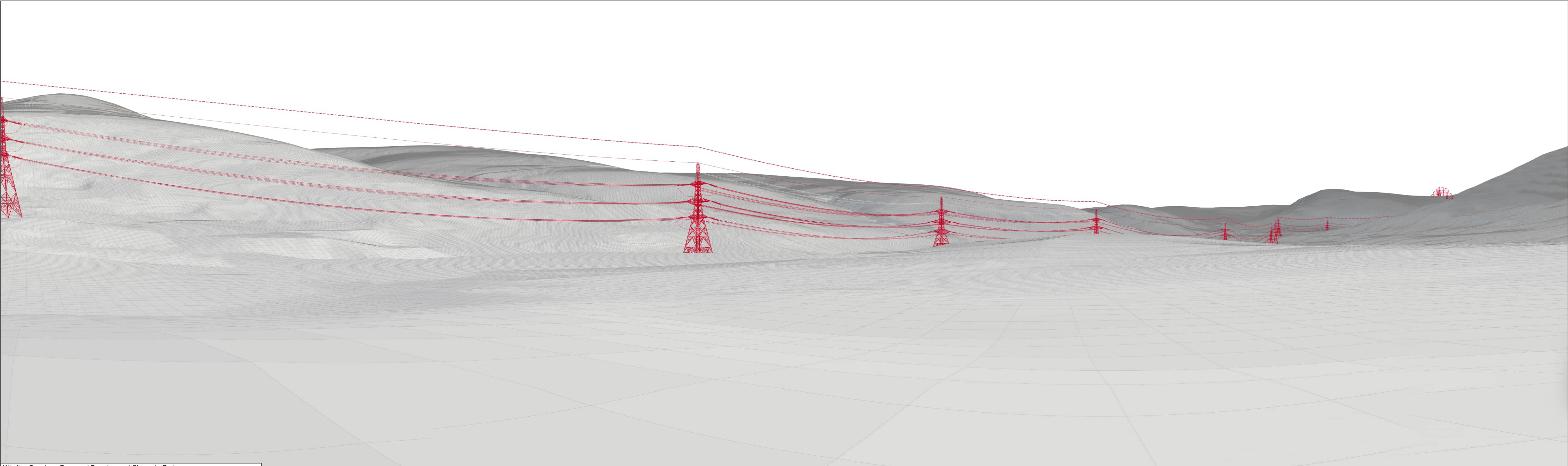
Photomontage

View flat at a comfortable arm's length

OS reference:	294054 915068	Horizontal field of view:	53.5° (planar projection)	Camera:	Canon EOS R5
Eye Level:	237m AOD	Principal distance:	812.5mm	Lens:	50mm (Canon AF 50mm f/1.2)
Direction of view:	189.6°	Paper size:	841 x 297 mm	Camera height:	1.5m AGL
Distance to Development:	0.33 km	Correct printed image size:	820 x 260 mm	Date and time:	13/02/2025 14:25



Figure: CHVP 32.1d
Cultural Heritage Viewpoint 32: Clach Mhic Mhios
Beauly to Spittal OHL



Wireline Drawing - Proposed Development Shown In Red
 - - - - Vertical Limit of Deviation: the maximum height of a tower above ground level

Figure: CHVP 32.1e
 Cultural Heritage Viewpoint 32: Clach Mhic Mhios
Beauly to Spittal OHL



OS reference: 294054 915068
 Eye Level: 237m AOD
 Direction of view: 125°
 Distance to Development: 0.33 km

Horizontal field of view: 137.5° (cylindrical projection)
 Principal distance: 812.5mm
 Paper size: 841 x 297 mm
 Correct printed image size: 820 x 260 mm

Camera: Canon EOS R5
 Lens: 50mm (Canon AF 50mm f/1.2)
 Camera height: 1.5m AGL
 Date and time: 13/02/2025 14:25

View flat at a comfortable arm's length



Photomontage

OS reference: 294054 915068
Eye Level: 237m AOD
Direction of view: 125°
Distance to Development: 0.33 km

Horizontal field of view: 137.5° (cylindrical projection)
Principal distance: 812.5mm
Paper size: 841 x 297 mm
Correct printed image size: 820 x 260 mm

Camera: Canon EOS R5
Lens: 50mm (Canon AF 50mm f/1.2)
Camera height: 1.5m AGL
Date and time: 13/02/2025 14:25

View flat at a comfortable arm's length



Figure: CHVP 32.1f
Cultural Heritage Viewpoint 32: Clach Mhic Mhios
Beauly to Spittal OHL