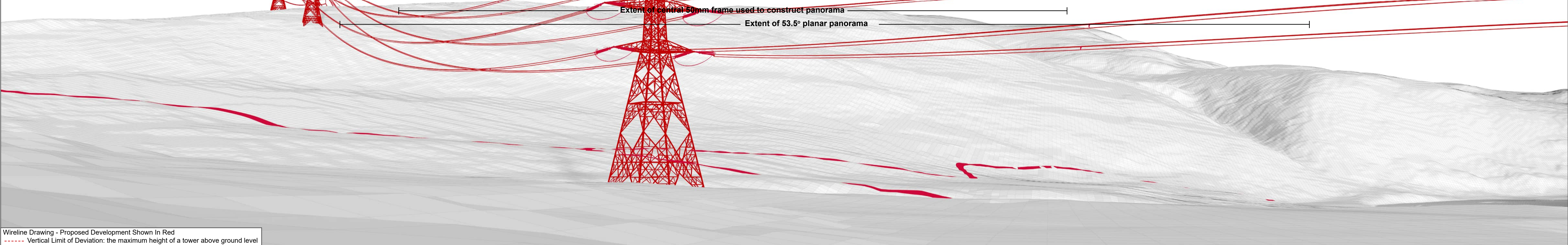




Baseline Photograph

This image provides landscape and visual context only



Wireline Drawing - Proposed Development Shown In Red  
 - - - - Vertical Limit of Deviation: the maximum height of a tower above ground level

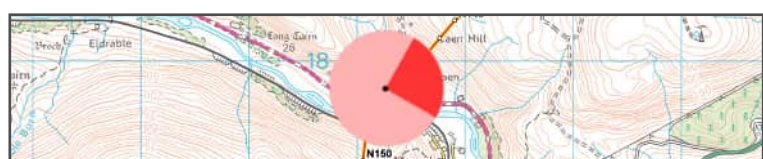
**Figure: CHVP-60.1a**  
 Cultural Heritage Viewpoint 60: Caen long cairn and round cairn  
**Beauly to Spittal OHL**



OS reference: 301252 917751  
 Eye Level: 41m AOD  
 Direction of view: 77°  
 Distance to Development: 0.08 km

Horizontal field of view: (90° cylindrical projection)  
 Principal distance: 812.5mm

Camera: Canon EOS R5  
 Lens: 50mm (Canon AF 50mm f/1.2)  
 Camera height: 1.5m AGL  
 Date and time: 09/10/2025 15:37



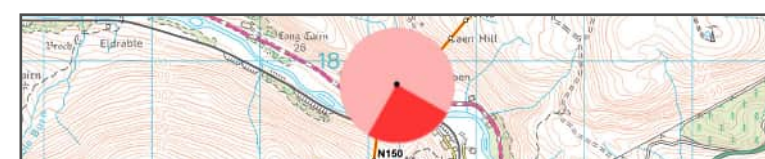


Baseline Photograph

This image provides landscape and visual context only



Wireline Drawing - Proposed Development Shown In Red  
 - - - - Vertical Limit of Deviation: the maximum height of a tower above ground level



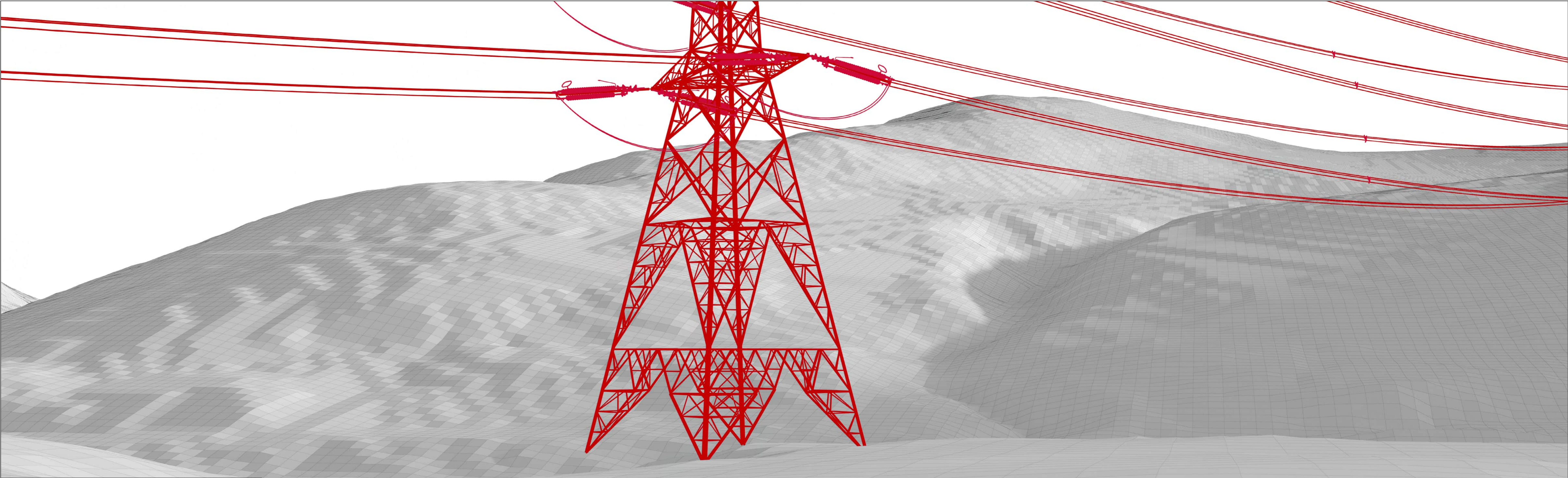
OS reference: 301252 917751  
 Eye Level: 41m AOD  
 Direction of view: 167°  
 Distance to Development: 0.08 km

Horizontal field of view: (90° cylindrical projection)  
 Principal distance: 812.5mm

Camera: Canon EOS R5  
 Lens: 50mm (Canon AF 50mm f/1.2)  
 Camera height: 1.5m AGL  
 Date and time: 09/10/2025 15:37



**Figure: CHVP-60.1b**  
 Cultural Heritage Viewpoint 60: Caen long cairn and round cairn  
**Beauly to Spittal OHL**



Wireline Drawing - Proposed Development Shown In Red  
 - - - - - Vertical Limit of Deviation: the maximum height of a tower above ground level

View flat at a comfortable arm's length

**Figure: CHVP-60.1c**  
 Cultural Heritage Viewpoint 60: Caen long cairn and round cairn  
**Beauly to Spittal OHL**



OS reference: 301252 917751  
 Eye Level: 41m AOD  
 Direction of view: 113°  
 Distance to Development: 0.08 km

Horizontal field of view: 53.5° (planar projection)  
 Principal distance: 812.5mm  
 Paper size: 841 x 297 mm  
 Correct printed image size: 820 x 260 mm

Camera: Canon EOS R5  
 Lens: 50mm (Canon AF 50mm f/1.2)  
 Camera height: 1.5m AGL  
 Date and time: 09/10/2025 15:37



Photomontage

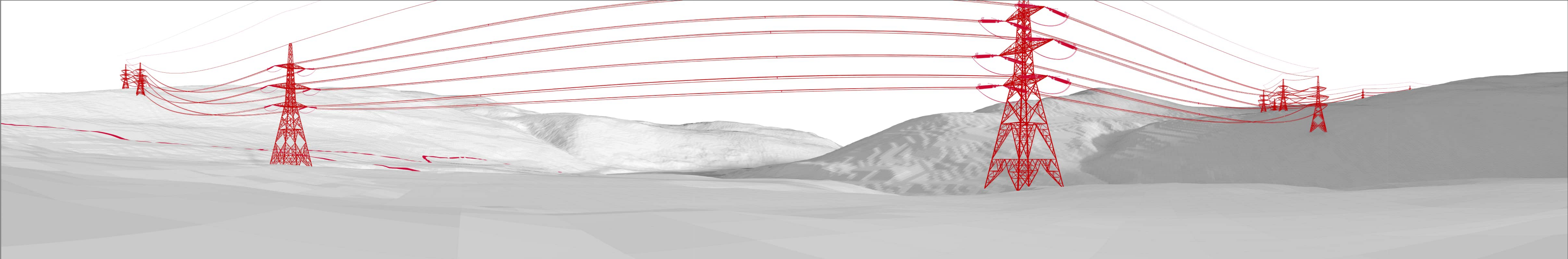
View flat at a comfortable arm's length

OS reference:	301252 917751	Horizontal field of view:	53.5° (planar projection)	Camera:	Canon EOS R5
Eye Level:	41m AOD	Principal distance:	812.5mm	Lens:	50mm (Canon AF 50mm f/1.2)
Direction of view:	113°	Paper size:	841 x 297 mm	Camera height:	1.5m AGL
Distance to Development:	0.08 km	Correct printed image size:	820 x 260 mm	Date and time:	09/10/2025 15:37



**Figure: CHVP-60.1d**  
Cultural Heritage Viewpoint 60: Caen long cairn and round cairn

**Beauly to Spittal OHL**



Wireline Drawing - Proposed Development Shown In Red  
 - - - - - Vertical Limit of Deviation: the maximum height of a tower above ground level

**Figure: CHVP-60.1e**  
 Cultural Heritage Viewpoint 60: Caen long cairn and round cairn  
**Beauly to Spittal OHL**



OS reference: 301252 917751  
 Eye Level: 41m AOD  
 Direction of view: 113°  
 Distance to Development: 0.08 km

Horizontal field of view: 205° (cylindrical projection)  
 Principal distance: 812.5mm  
 Paper size: 841 x 297 mm  
 Correct printed image size: 820 x 260 mm

Camera: Canon EOS R5  
 Lens: 50mm (Canon AF 50mm f/1.2)  
 Camera height: 1.5m AGL  
 Date and time: 09/10/2025 15:37

View flat at a comfortable arm's length



Photomontage

OS reference: 301252 917751  
 Eye Level: 41m AOD  
 Direction of view: 113°  
 Distance to Development: 0.08 km

Horizontal field of view: 205° (cylindrical projection)  
 Principal distance: 812.5mm  
 Paper size: 841 x 297 mm  
 Correct printed image size: 820 x 260 mm

Camera: Canon EOS R5  
 Lens: 50mm (Canon AF 50mm f/1.2)  
 Camera height: 1.5m AGL  
 Date and time: 09/10/2025 15:37

View flat at a comfortable arm's length



**Figure: CHVP-60.1f**  
 Cultural Heritage Viewpoint 60: Caen long cairn and round cairn  
**Beauly to Spittal OHL**