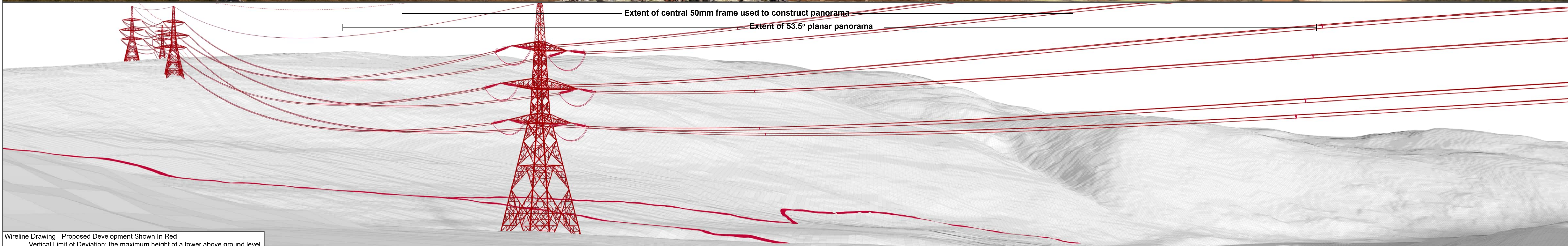




Baseline Photograph

This image provides landscape and visual context only



Wireline Drawing - Proposed Development Shown In Red
 - - - - Vertical Limit of Deviation: the maximum height of a tower above ground level

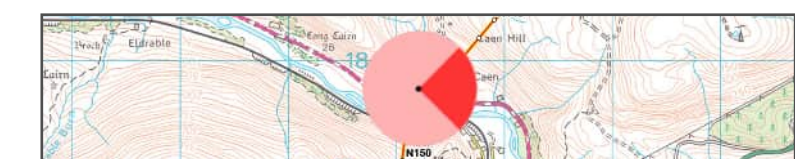
Figure: CHVP-60.2a
 Cultural Heritage Viewpoint 60: Caen long cairn and round cairn
Beauly to Spittal OHL



OS reference: 301202 917748
 Eye Level: 40m AOD
 Direction of view: 90°
 Distance to Development: 0.12 km

Horizontal field of view: (90° cylindrical projection)
 Principal distance: 812.5mm

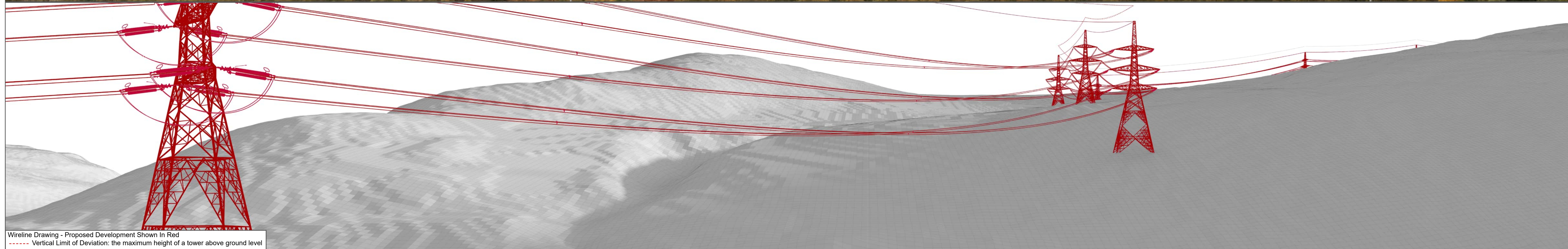
Camera: Canon EOS R5
 Lens: 50mm (Canon AF 50mm f/1.2)
 Camera height: 1.5m AGL
 Date and time: 09/10/2025 14:45



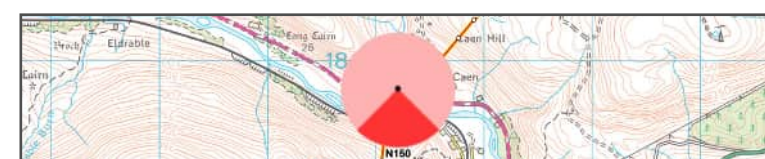


Baseline Photograph

This image provides landscape and visual context only



Wireline Drawing - Proposed Development Shown In Red
 - - - - Vertical Limit of Deviation: the maximum height of a tower above ground level

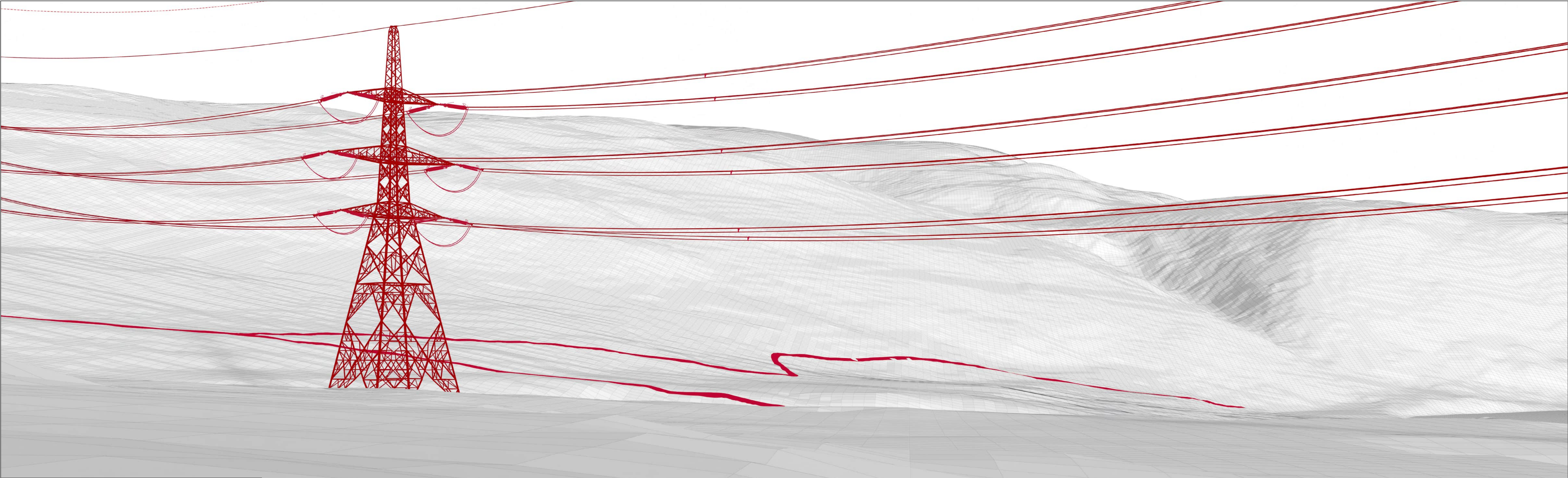


OS reference: 301202 917748
 Eye Level: 40m AOD
 Direction of view: 180°
 Distance to Development: 0.12 km

Horizontal field of view: (90° cylindrical projection)
 Principal distance: 812.5mm

Camera: Canon EOS R5
 Lens: 50mm (Canon AF 50mm f/1.2)
 Camera height: 1.5m AGL
 Date and time: 09/10/2025 14:45





Wireline Drawing - Proposed Development Shown In Red
 - - - - Vertical Limit of Deviation: the maximum height of a tower above ground level

View flat at a comfortable arm's length

Figure: CHVP-60.2c
 Cultural Heritage Viewpoint 60: Caen long cairn and round cairn
Beauly to Spittal OHL



OS reference: 301202 917748
 Eye Level: 40m AOD
 Direction of view: 90°
 Distance to Development: 0.12 km

Horizontal field of view: 53.5° (planar projection)
 Principal distance: 812.5mm
 Paper size: 841 x 297 mm
 Correct printed image size: 820 x 260 mm

Camera: Canon EOS R5
 Lens: 50mm (Canon AF 50mm f/1.2)
 Camera height: 1.5m AGL
 Date and time: 09/10/2025 14:45



Photomontage

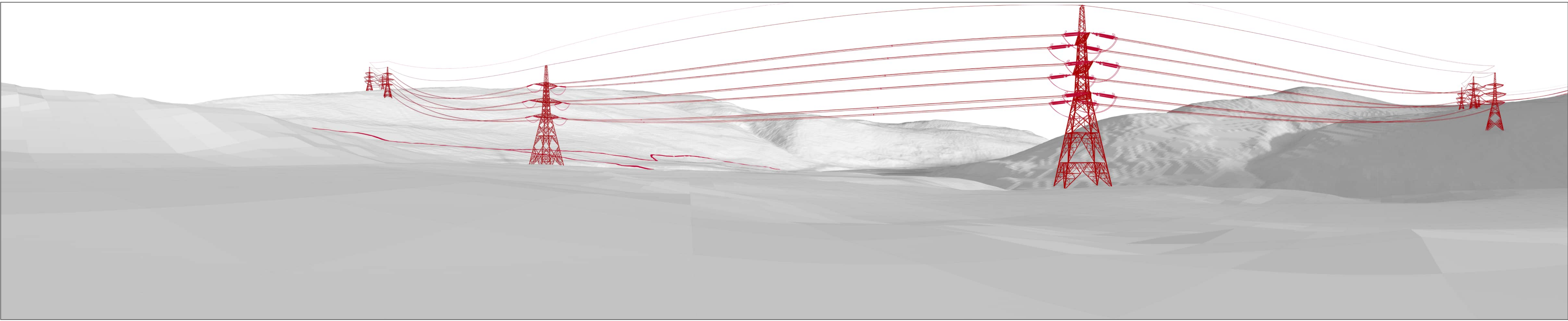
View flat at a comfortable arm's length

OS reference:	301202 917748	Horizontal field of view:	53.5° (planar projection)	Camera:	Canon EOS R5
Eye Level:	40m AOD	Principal distance:	812.5mm	Lens:	50mm (Canon AF 50mm f/1.2)
Direction of view:	90°	Paper size:	841 x 297 mm	Camera height:	1.5m AGL
Distance to Development:	0.12 km	Correct printed image size:	820 x 260 mm	Date and time:	09/10/2025 14:45



Figure: CHVP-60.2d
 Cultural Heritage Viewpoint 60: Caen long cairn and round cairn

Beauly to Spittal OHL



Wireline Drawing - Proposed Development Shown In Red
 - - - - - Vertical Limit of Deviation: the maximum height of a tower above ground level

Figure: CHVP-60.2e
 Cultural Heritage Viewpoint 60: Caen long cairn and round cairn
Beauly to Spittal OHL



OS reference: 301202 917748
 Eye Level: 40m AOD
 Direction of view: 90°
 Distance to Development: 0.12 km

Horizontal field of view: 205° (cylindrical projection)
 Principal distance: 812.5mm
 Paper size: 841 x 297 mm
 Correct printed image size: 820 x 167 mm

Camera: Canon EOS R5
 Lens: 50mm (Canon AF 50mm f/1.2)
 Camera height: 1.5m AGL
 Date and time: 09/10/2025 14:45

View flat at a comfortable arm's length



Photomontage

OS reference: 301202 917748
 Eye Level: 40m AOD
 Direction of view: 90°
 Distance to Development: 0.12 km

Horizontal field of view: 205° (cylindrical projection)
 Principal distance: 812.5mm
 Paper size: 841 x 297 mm
 Correct printed image size: 820 x 167 mm

Camera: Canon EOS R5
 Lens: 50mm (Canon AF 50mm f/1.2)
 Camera height: 1.5m AGL
 Date and time: 09/10/2025 14:45

View flat at a comfortable arm's length



Figure: CHVP-60.2f
 Cultural Heritage Viewpoint 60: Caen long cairn and round cairn
Beauly to Spittal OHL