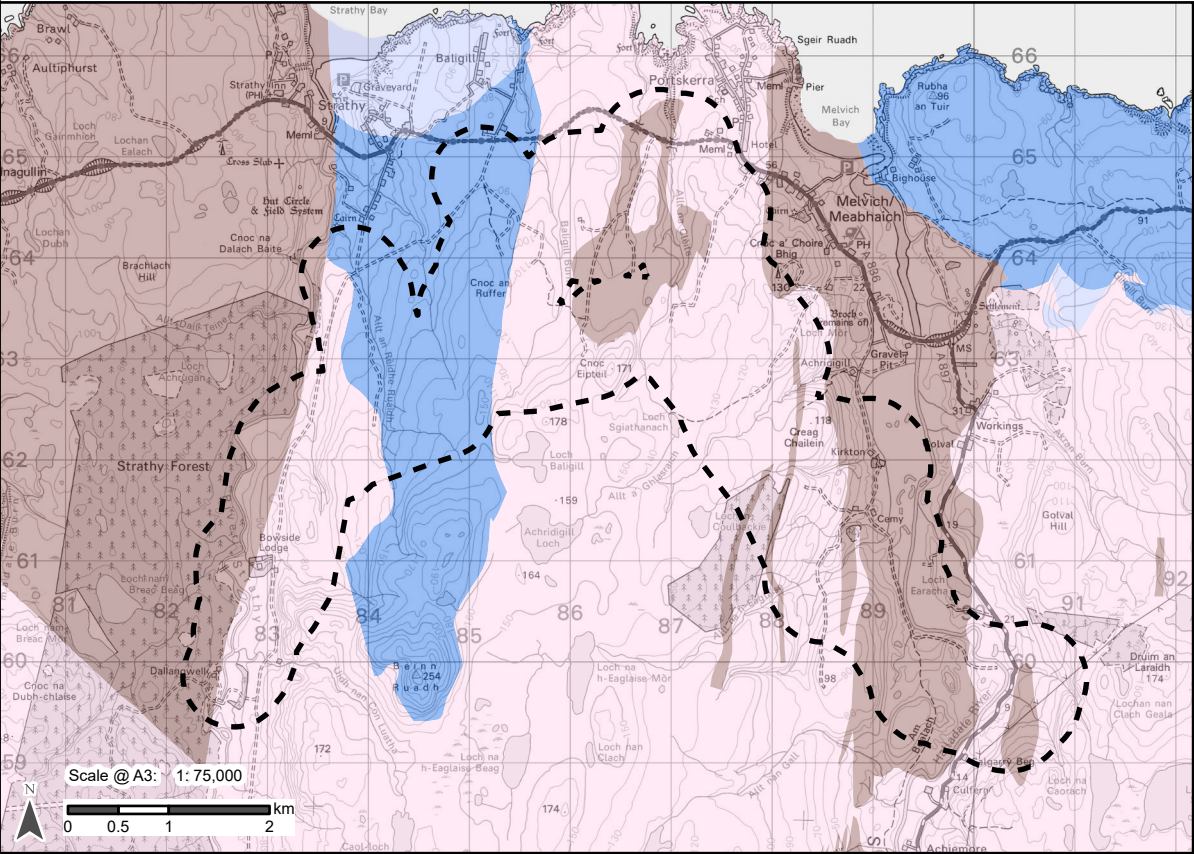
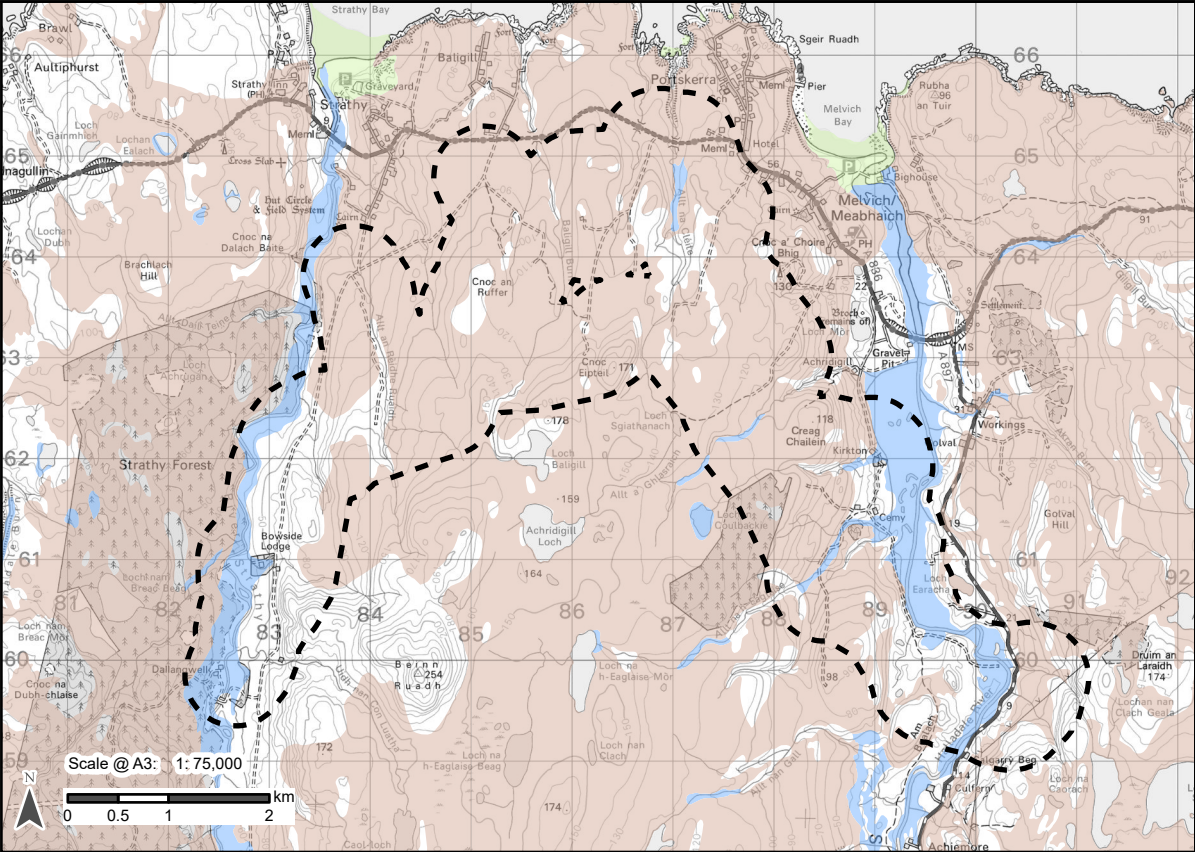


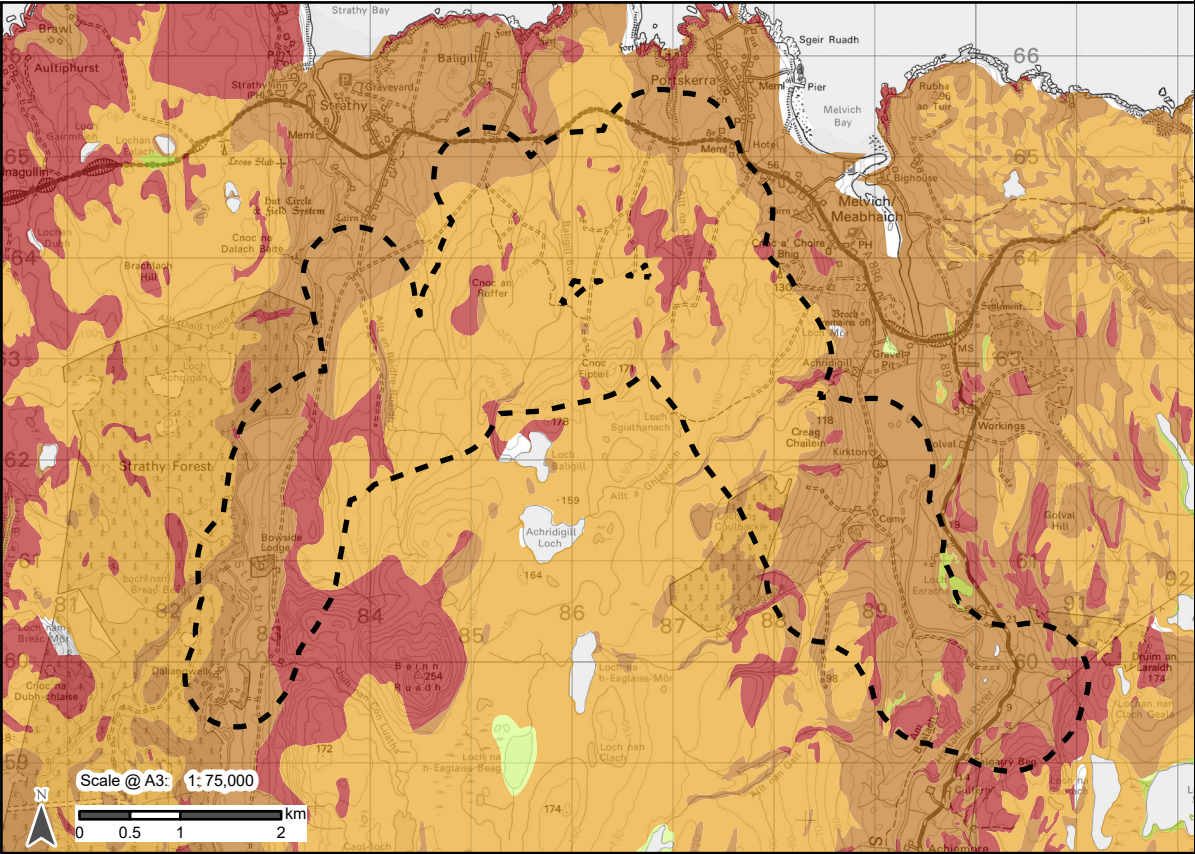
MAP EXTRACT



BEDROCK AQUIFERS



SUPERFICIAL AQUIFERS



GROUNDWATER VULNERABILITY

Legend

Study Area

Superficial Deposits Aquifer Productivity Scotland, Version 2

- Intergranular; Moderate to High Productivity
- Intergranular; Low to Moderate Productivity
- Not a Significant Aquifer

Bedrock Aquifer Productivity Scotland, Version 2

- Intergranular/Fracture; High Productivity
- Intergranular/Fracture; Moderate Productivity
- Fracture; Low Productivity
- Fracture; Very Low Productivity

Groundwater Vulnerability in the Uppermost Aquifer Vulnerability Class

- 5 (Most vulnerable) - Vulnerable to most pollutants, with rapid impact in many scenarios.
- 4a - Vulnerable to those pollutants not readily adsorbed or transformed. Less likely to have clay present in superficial deposits (therefore generally higher vulnerability than 4b).
- 4b - Vulnerable to those pollutants not readily adsorbed or transformed. More likely to have clay present in superficial deposits (therefore generally lower vulnerability than 4a).
- 3 - Vulnerable to some pollutants; many others significantly attenuated.
- 2 - Vulnerable to some pollutants, but only when they are continuously discharged/leached.

Reproduced by permission of Ordnance Survey on behalf of HMSO. Crown copyright and database right 2025 all rights reserved. Ordnance Survey Licence number AC0000848283. Reproduced with permission of the British Geological Society ©UKNI. All Rights Reserved [2024]

Project No: LT560
Project: Strathly South Wind Farm Grid Connection EIA Report

Title: Figure V5-7.7 - Aquifer Classifications and Groundwater Vulnerability Alternative Alignment

Drawn by: AA Date: 24/01/2025

Drawing: 428.013137.00001.00060.0