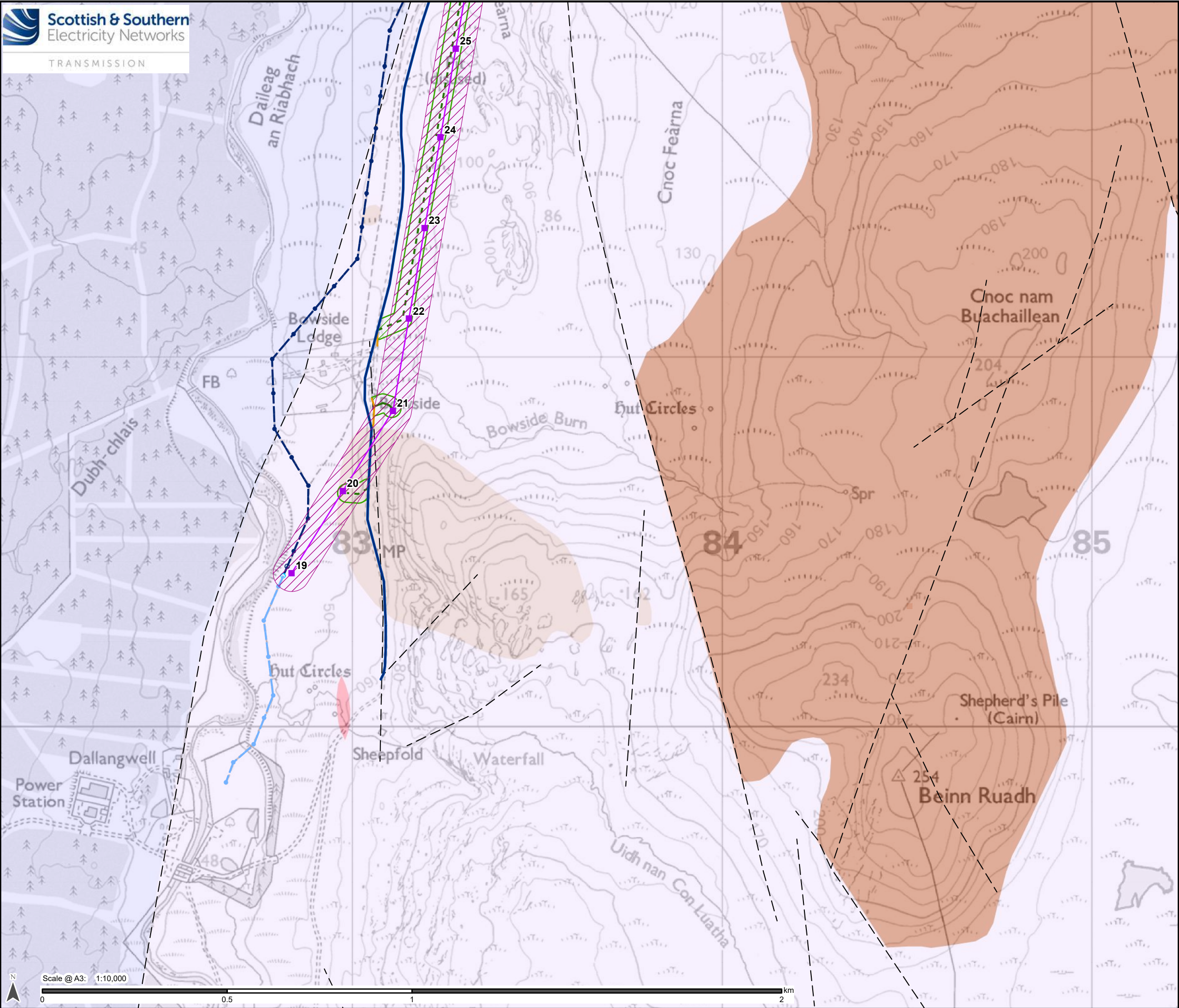


Legend

- Alternative Steel Lattice Tower
 - Alternative OHL Alignment
 - Proposed Underground Cable (UGC)
 - Proposed Cable Sealing End (CSE) Compound
 - Existing Access Track
 - Existing Access Track (to be upgraded)
 - Proposed Permanent Access Track
 - Proposed Temporary Access Track
 - Existing Wood Pole (H pole) (to be retained)
 - Existing OHL (to be retained)
 - Existing Wood Pole (H pole) (to be dismantled)
 - Temporary Wood Pole (H pole)
 - Proposed Temporary OHL
 - Temporary UGC Alignment
 - Existing Wood Pole (H pole) (to be dismantled)
 - Connagill 275/132 kV Substation
- Bedrock Geology**
- Bighouse Formation - Sandstone
 - Bighouse Formation - Sandstone, Conglomerate And Argillaceous Rocks
 - Bighouse Formation - Siltstone, Calcareous
 - Lower Old Red Sandstone Group - Conglomerate And Sandstone, Interbedded
 - Luachair Sandstone Member - Sandstone And Conglomerate, Interbedded
 - Rubha Sandstone Member - Conglomerate
 - Rubha Sandstone Member - Sandstone With Subordinate Conglomerate And Siltstone
 - Sandside Sandstone Formation - Sandstone And Siltstone, Interbedded
 - Sandside Sandstone Formation - Siltstone, Calcareous
 - Tobaieach Conglomerate Member - Conglomerate
 - Clerkhill Appinite Suite - Amphibolite
 - Kirtomy Gneisses - Semipelite, Gneissose
 - Portskerra Psammite Formation - Migmatitic Psammite With Migmatitic Semipelite
 - Portskerra Psammite Formation - Quartzite
 - Strathy Complex - Gneiss
 - Strathy Complex - Ortho-amphibolite
- Igneous Rocks**
- Strath Halladale Granite - Diorite
 - Strath Halladale Granite - Granite, Biotite
 - Badanloch Granite Sheets - Granite, Foliated-biotite
 - Scottish Highland Ordovician Minor Intrusion Suite - Granite
 - Scottish Highland Ordovician Minor Intrusion Suite - Leucotonalite
 - Scottish Highland Ordovician Minor Intrusion Suite - Tonalite, Foliated
 - Unnamed Igneous Intrusion, Pre-caledonian - Amphibolite



Legend

- Alternative Steel Lattice Tower
- Alternative OHL Alignment
- Limit of Deviation (Alternative OHL)
- Existing Access Track
- Existing Access Track (to be upgraded)
- Proposed Permanent Access Track
- Proposed Temporary Access Track
- Limit of Deviation (Access Track)
- Existing Wood Pole (H pole) (to be retained)
- Existing OHL (to be retained)
- Existing Wood Pole (H pole) (to be dismantled)
- Existing Wood Pole (H pole) (to be dismantled)
- Proposed* Wood Pole (H pole) (to be retained)
- Proposed* Wood Pole (H pole) (to be dismantled)

*Proposed as part of Strathy Wood Wind Farm
Grid Connection

Bedrock Geology

- Bighouse Formation - Sandstone, Conglomerate And Argillaceous Rocks
- Lower Old Red Sandstone Group - Conglomerate And Sandstone, Interbedded
- Kirtomy Gneisses - Semipelite, Gneissose
- Strathy Complex - Gneiss

Igneous Rocks

- Scottish Highland Ordovician Minor Intrusion Suite - Granite

Linear Features

- Fault, inferred

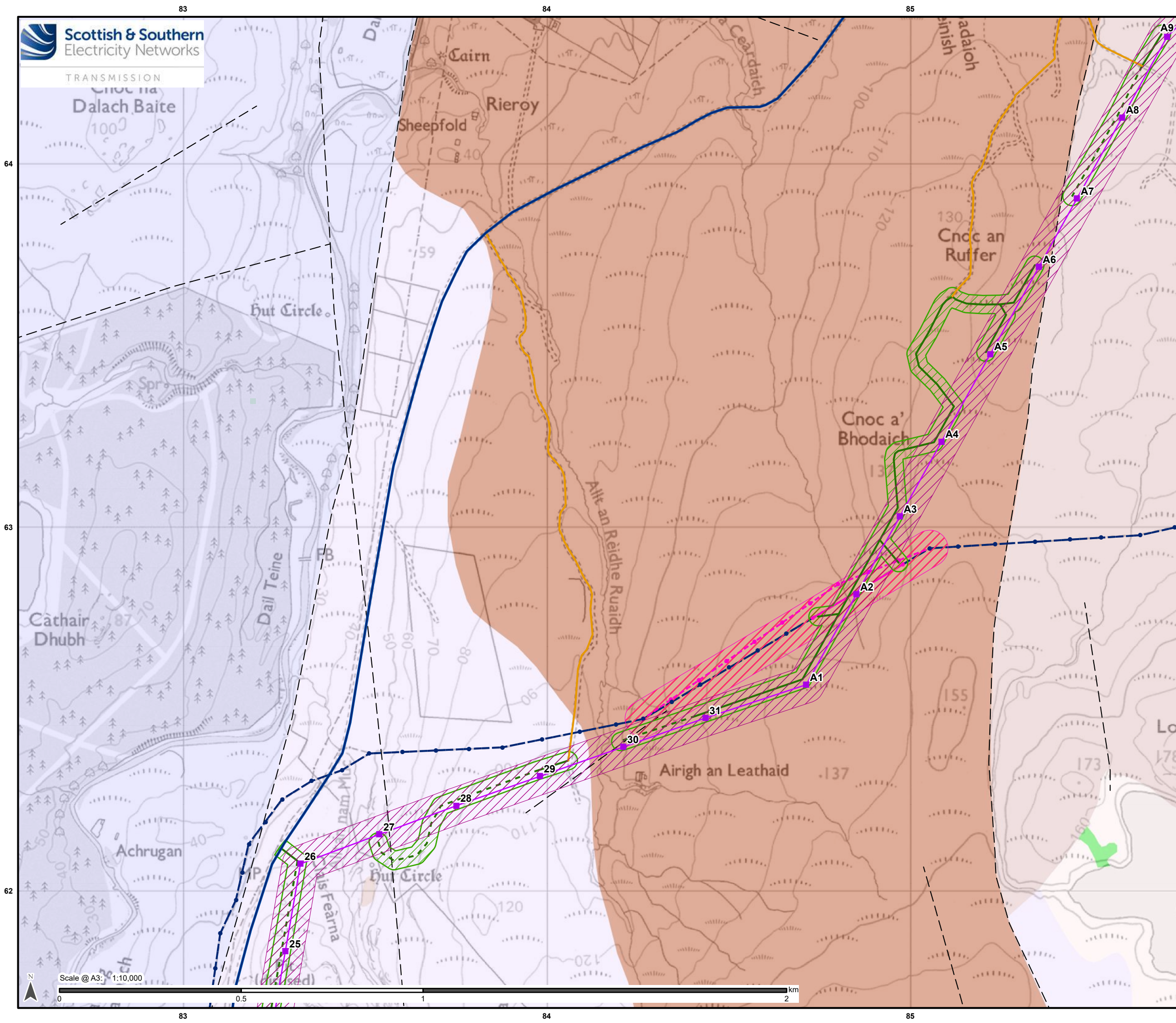
Reproduced by permission of Ordnance Survey on behalf of HMSO.
Crown copyright and database right 2025 all rights reserved.
Ordnance Survey Licence number AC0000848283.
Bedrock Geology data obtained via BGS WMS.
Contains British Geological Survey materials © UKRI [2024]

Project No: LT560
Strathy South Wind Farm Grid Connection
EIA Report - Peat Landslide Hazard and Risk Assessment

Title:
Figure V5-7.1.4 - Bedrock Geology
Alternative Alignment
Map 1

Drawn by: MM Date: 29/01/2025

Drawing: 428.013137.00001.00064.0



Legend

- Alternative Steel Lattice Tower
- Alternative OHL Alignment
- Limit of Deviation (Alternative OHL)
- Existing Access Track
- Existing Access Track (to be upgraded)
- Proposed Permanent Access Track
- Proposed Temporary Access Track
- Limit of Deviation (Access Track)
- Existing Wood Pole (H pole) (to be dismantled)
- Temporary Wood Pole (H pole)
- Proposed Temporary OHL
- Limit of Deviation (Temporary OHL)
- Temporary UGC Alignment
- Existing Wood Pole (H pole) (to be dismantled)

Bedrock Geology

- Bighouse Formation - Sandstone, Conglomerate And Argillaceous Rocks
- Lower Old Red Sandstone Group - Conglomerate And Sandstone, Interbedded
- Clerkhill Appinite Suite - Amphibolite
- Kirtomy Gneisses - Semipelite, Gneissose
- Portskerra Psammite Formation - Migmatitic Psammite With Migmatitic Semipelite
- Strathy Complex - Gneiss

Linear Features

- Fault, inferred

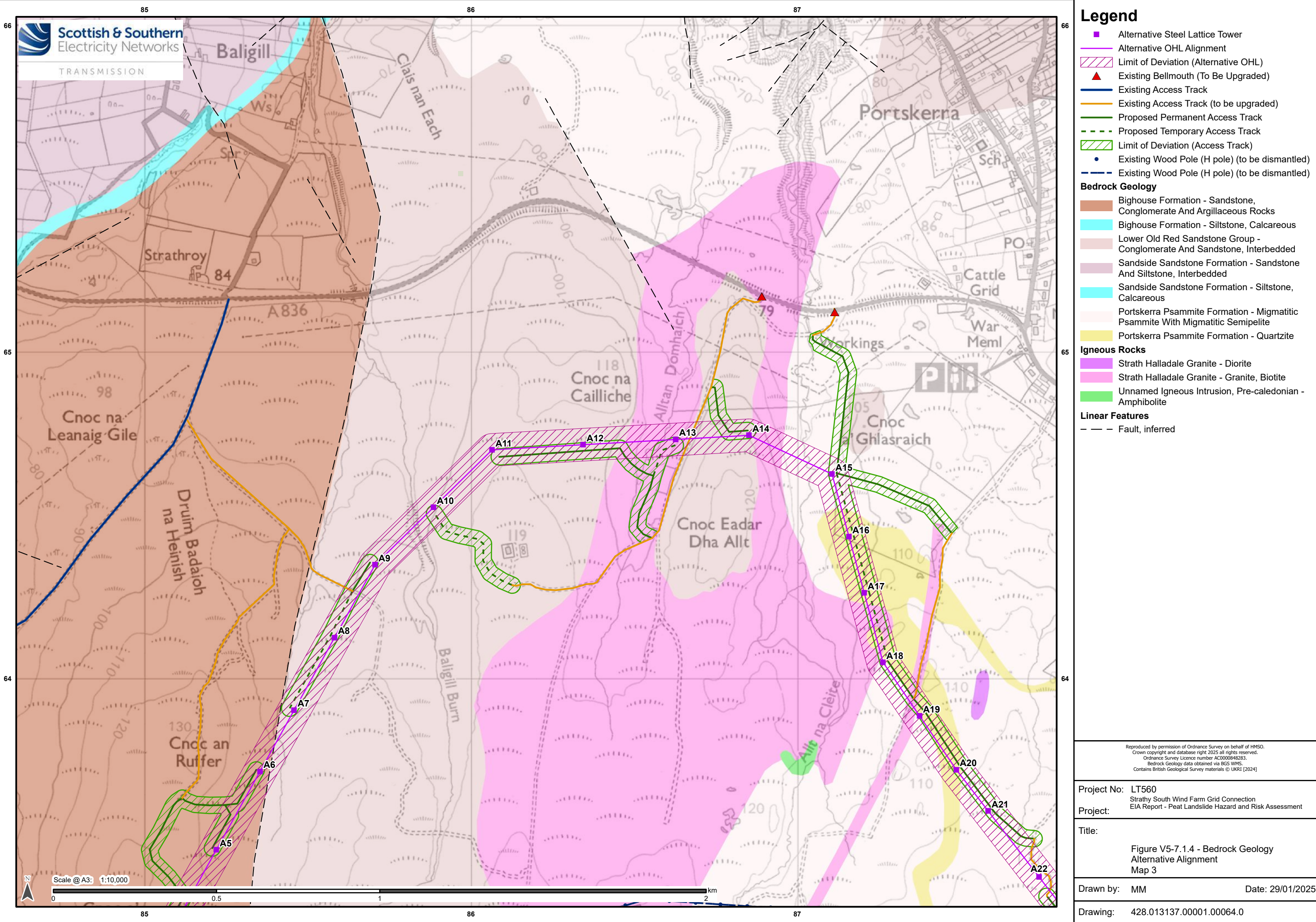
Reproduced by permission of Ordnance Survey on behalf of HMSO.
Crown copyright and database right 2025 all rights reserved.
Ordnance Survey Licence number AC0000948283.
Bedrock Geology data obtained via BGS WMS.
Contains British Geological Survey materials © UKRI [2024]

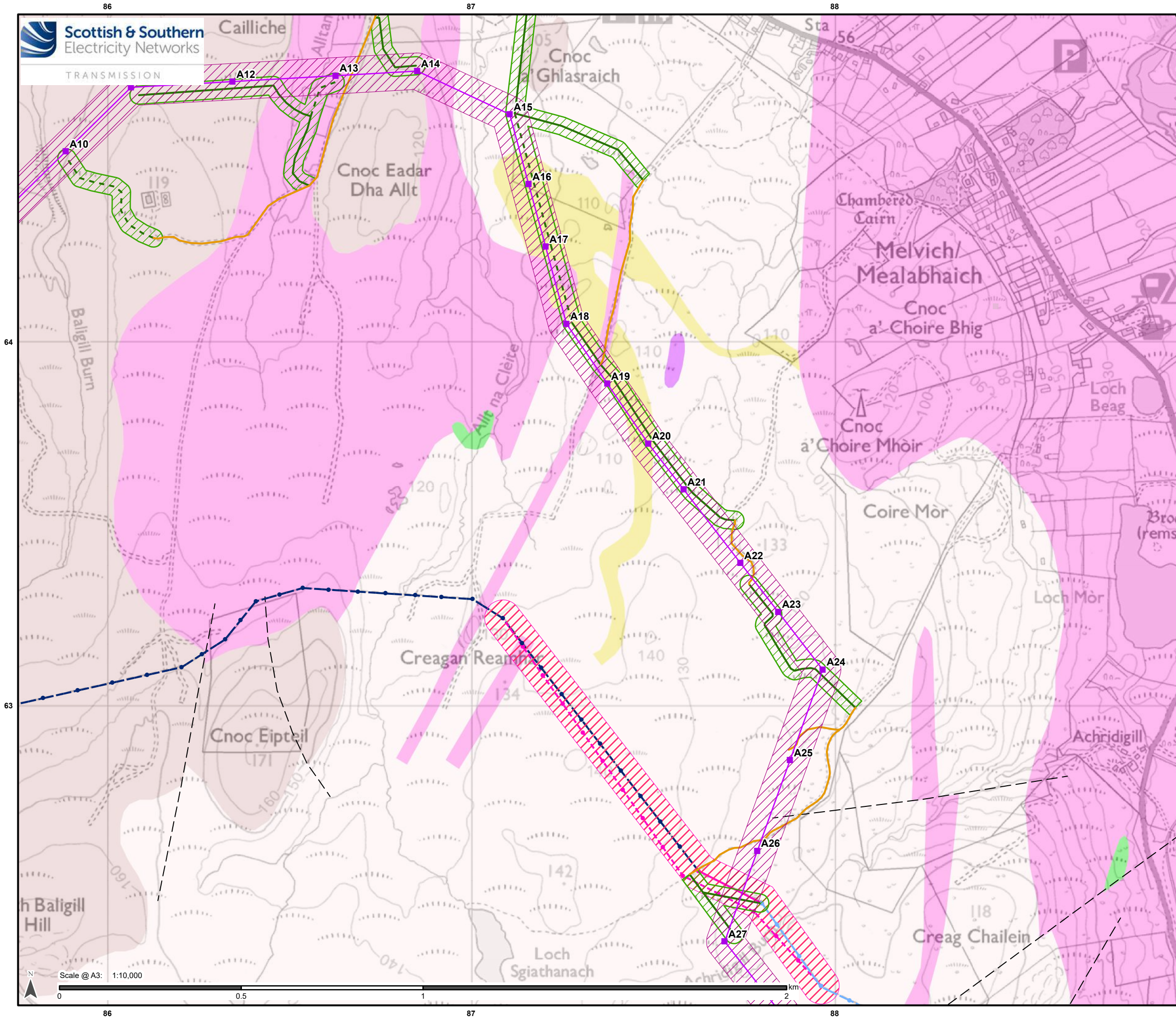
Project No: LT560
Strathy South Wind Farm Grid Connection
EIA Report - Peat Landslide Hazard and Risk Assessment

Title:
Figure V5-7.1.4 - Bedrock Geology
Alternative Alignment
Map 2

Drawn by: MM Date: 29/01/2025

Drawing: 428.013137.00001.00064.0





Legend

- Alternative Steel Lattice Tower
- Alternative OHL Alignment
- Limit of Deviation (Alternative OHL)
- Existing Access Track (to be upgraded)
- Proposed Permanent Access Track
- Proposed Temporary Access Track
- Limit of Deviation (Access Track)
- Existing Wood Pole (H pole) (to be retained)
- Existing OHL (to be retained)
- Existing Wood Pole (H pole) (to be dismantled)
- Temporary Wood Pole (H pole)
- Proposed Temporary OHL
- Limit of Deviation (Temporary OHL)
- Temporary UGC Alignment
- Existing Wood Pole (H pole) (to be dismantled)

Bedrock Geology

- Lower Old Red Sandstone Group - Conglomerate And Sandstone, Interbedded
- Rubha Sandstone Member - Sandstone With Subordinate Conglomerate And Siltstone
- Portskerra Psammite Formation - Migmatitic Psammite With Migmatitic Semipelite
- Portskerra Psammite Formation - Quartzite

Igneous Rocks

- Strath Halladale Granite - Diorite
- Strath Halladale Granite - Granite, Biotite
- Unnamed Igneous Intrusion, Pre-caledonian - Amphibolite

Linear Features

- Fault, inferred

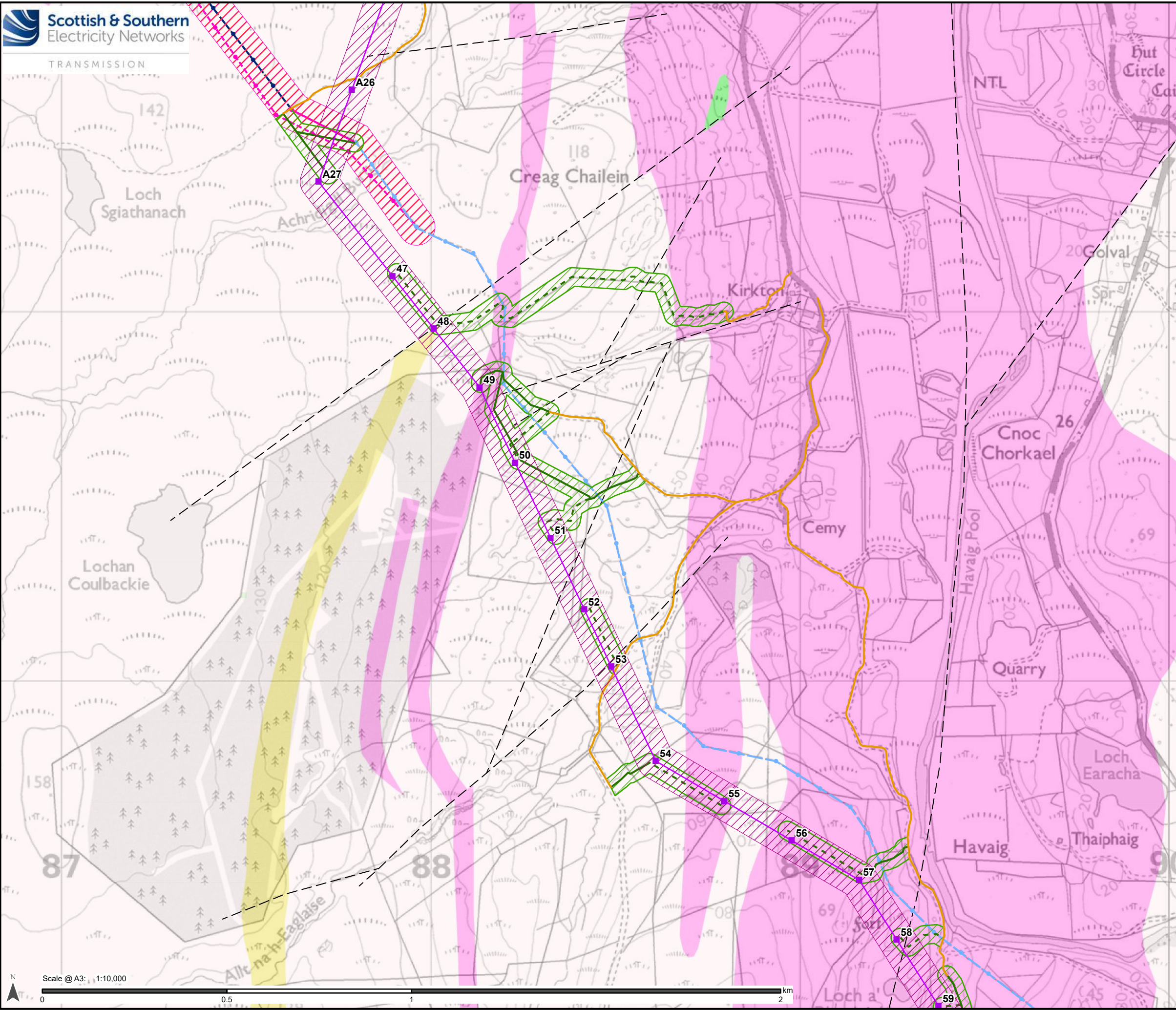
Reproduced by permission of Ordnance Survey on behalf of HMSO.
Crown copyright and database right 2025 all rights reserved.
Ordnance Survey Licence number AC0000848283.
Bedrock Geology data obtained via BGS WMS.
Contains British Geological Survey materials © UKRI [2024]

Project No: LT560
Strath South Wind Farm Grid Connection
EIA Report - Peat Landslide Hazard and Risk Assessment

Title:
Figure V5-7.1.4 - Bedrock Geology
Alternative Alignment
Map 4

Drawn by: MM Date: 29/01/2025

Drawing: 428.013137.00001.00064.0



Legend

- Alternative Steel Lattice Tower
 - Alternative OHL Alignment
 - Limit of Deviation (Alternative OHL)
 - Existing Access Track (to be upgraded)
 - Proposed Permanent Access Track
 - Proposed Temporary Access Track
 - Limit of Deviation (Access Track)
 - Existing Wood Pole (H pole) (to be retained)
 - Existing OHL (to be retained)
 - Existing Wood Pole (H pole) (to be dismantled)
 - Temporary Wood Pole (H pole)
 - Proposed Temporary OHL
 - Limit of Deviation (Temporary OHL)
 - Temporary UGC Alignment
 - Existing Wood Pole (H pole) (to be dismantled)
- Bedrock Geology**
- Portskerra Psammite Formation - Migmatitic Psammite With Migmatitic Semipelite
 - Portskerra Psammite Formation - Quartzite
- Igneous Rocks**
- Strath Halladale Granite - Granite, Biotite
 - Unnamed Igneous Intrusion, Pre-caledonian - Amphibolite
- Linear Features**
- Fault, inferred

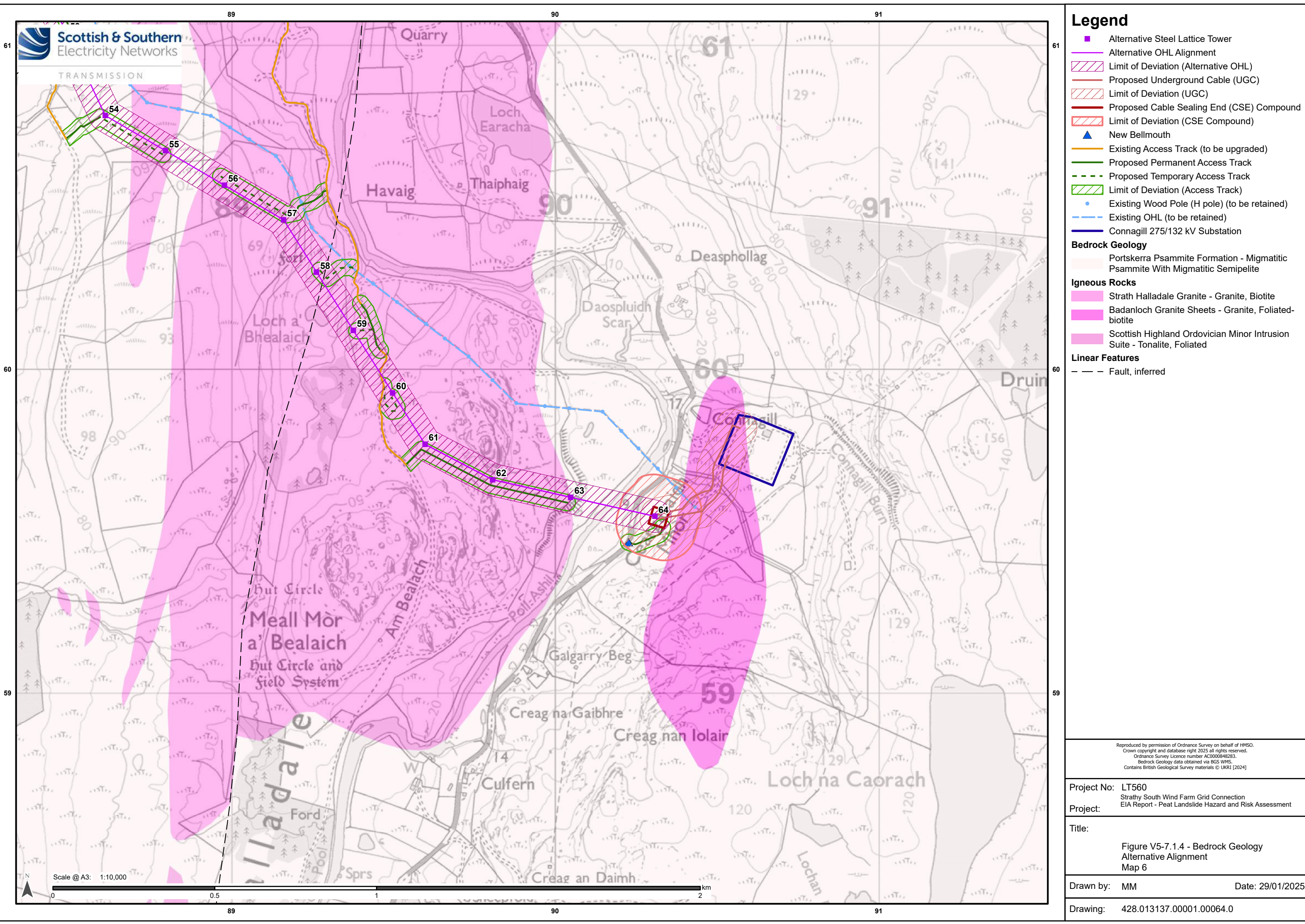
Reproduced by permission of Ordnance Survey on behalf of HMSO.
Crown copyright and database right 2025 all rights reserved.
Ordnance Survey Licence number AC0000848283.
Bedrock Geology data obtained via BGS WMS.
Contains British Geological Survey materials © UKRI [2024]

Project No: LT560
Strathly South Wind Farm Grid Connection
EIA Report - Peat Landslide Hazard and Risk Assessment

Title:
Figure V5-7.1.4 - Bedrock Geology
Alternative Alignment
Map 5

Drawn by: MM Date: 29/01/2025

Drawing: 428.013137.00001.00064.0



Legend

- Alternative Steel Lattice Tower
- Alternative OHL Alignment
- Limit of Deviation (Alternative OHL)
- Proposed Underground Cable (UGC)
- Limit of Deviation (UGC)
- Proposed Cable Sealing End (CSE) Compound
- Limit of Deviation (CSE Compound)
- New Bellmouth
- Existing Access Track (to be upgraded)
- Proposed Permanent Access Track
- Proposed Temporary Access Track
- Limit of Deviation (Access Track)
- Existing Wood Pole (H pole) (to be retained)
- Existing OHL (to be retained)
- Connagill 275/132 kV Substation
- Bedrock Geology**
 - Portskerra Psammite Formation - Migmatitic Psammite With Migmatitic Sempelite
- Igneous Rocks**
 - Strath Halladale Granite - Granite, Biotite
 - Badanloch Granite Sheets - Granite, Foliated-biotite
 - Scottish Highland Ordovician Minor Intrusion Suite - Tonalite, Foliated
- Linear Features**
 - Fault, inferred

Reproduced by permission of Ordnance Survey on behalf of HMSO.
Crown copyright and database right 2025 all rights reserved.
Ordnance Survey Licence number AC0000848283.
Bedrock Geology data obtained via BGS WMS.
Contains British Geological Survey materials © UKRI [2024]

Project No: LT560
Strathly South Wind Farm Grid Connection
EIA Report - Peat Landslide Hazard and Risk Assessment

Title:

Figure V5-7.1.4 - Bedrock Geology
Alternative Alignment
Map 6

Drawn by: MM Date: 29/01/2025

Drawing: 428.013137.00001.00064.0