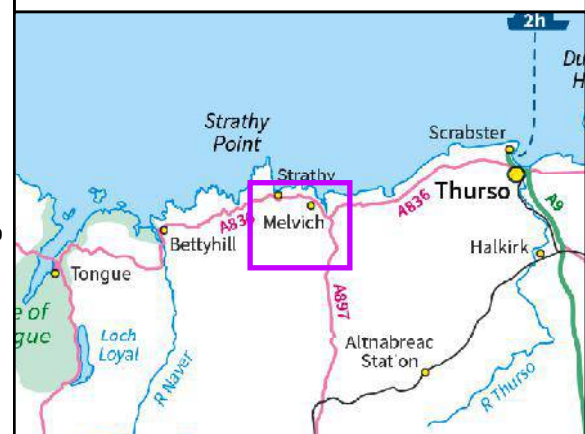


## Legend

- Alternative Steel Lattice Tower
- Alternative OHL Alignment
- Proposed Underground Cable (UGC)
- Proposed Cable Sealing End (CSE) Compound
- Existing Access Track
- Existing Access Track (to be upgraded)
- Proposed Permanent Access Track
- Proposed Temporary Access Track
- Existing Wood Pole (H pole) (to be retained)
- Existing OHL (to be retained)
- Existing Wood Pole (H pole) (to be dismantled)
- Temporary Wood Pole (H pole)
- Proposed Temporary OHL
- Temporary UGC Alignment
- Existing Wood Pole (H pole) (to be dismantled)
- Connagill 275/132 kV Substation

## Superficial Geology

- Alluvial Fan Deposits - Gravel, Sand, Silt And Clay
- Alluvial Fan Deposits - Sand, Gravel And Boulders
- Alluvium - Clay, Silt, Sand And Gravel
- Blown Sand - Sand
- Glaciofluvial Deposits - Gravel, Sand And Silt
- Glaciofluvial Ice Contact Deposits - Gravel, Sand, Silt And Clay
- Glaciofluvial Sheet Deposits - Gravel, Sand And Silt
- Hummocky (moundy) Glacial Deposits - Sand, Gravel And Boulders
- Lacustrine Deposits - Clay, Silt And Sand
- Marine Beach Deposits - Sand And Gravel
- Peat - Peat
- River Terrace Deposits - Gravel, Sand And Silt
- Thormaid Till Member - Diamicton
- Bedrock at or Near Surface



Reproduced by permission of Ordnance Survey on behalf of HMSO.  
Crown copyright and database right 2025 all rights reserved.  
Ordnance Survey Licence number AC0000848283.  
Superficial Geology data obtained via BGS WMS.  
Contains British Geological Survey materials © UKRI [2024]

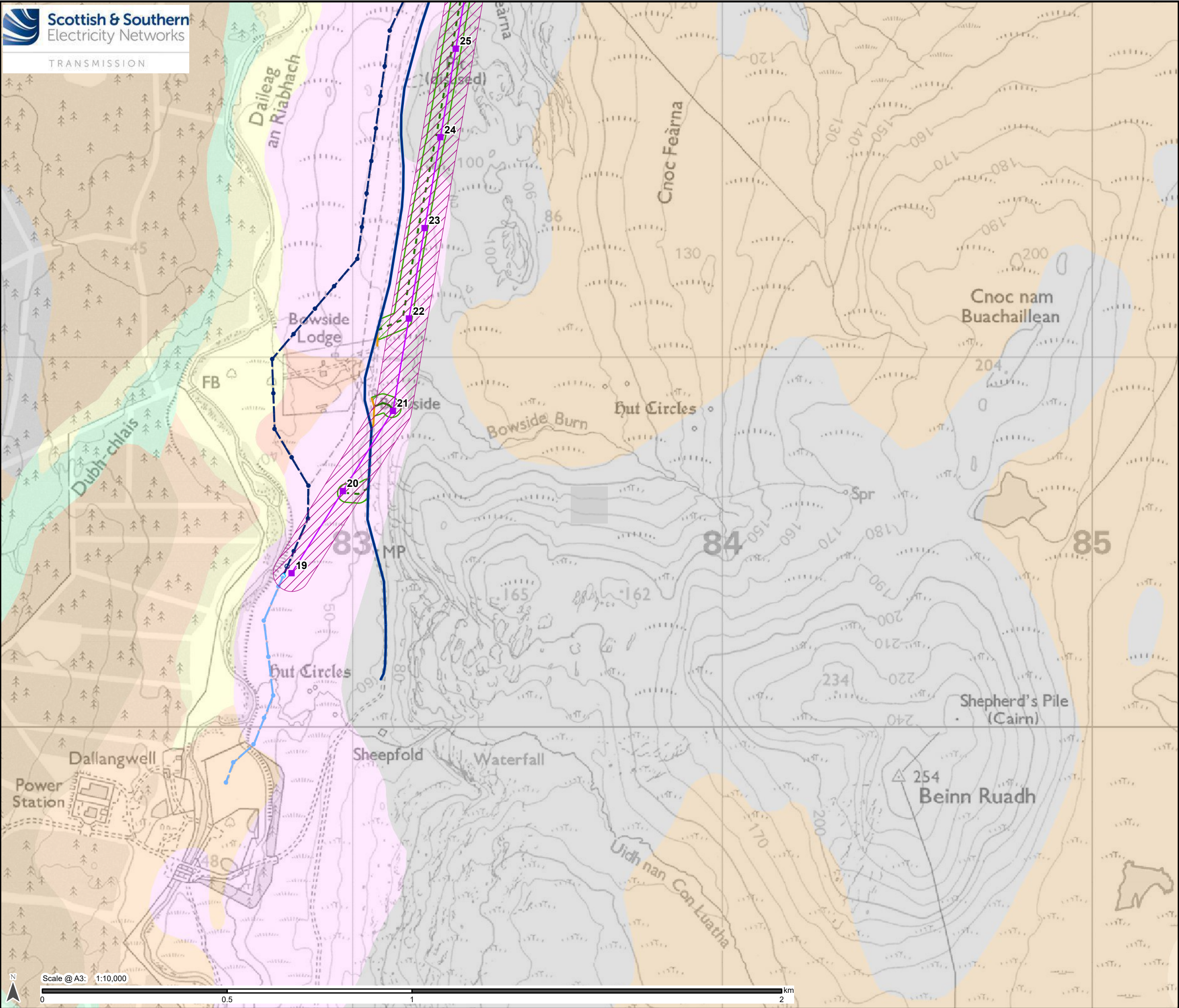
Project No: LT560  
Strathy South Wind Farm Grid Connection  
EIA Report - Peat Landslide Hazard and Risk Assessment

Title:  
Figure V5-7.1.3 - Superficial Geology  
Alternative Alignment  
Overview

Drawn by: MM Date: 20/01/2025

Drawing: 428.013137.00001.00075.0





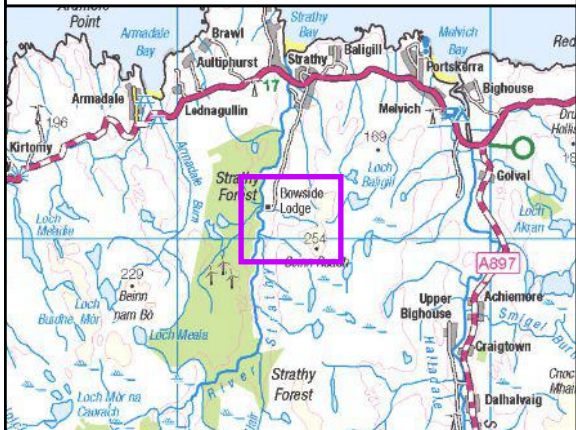
Legend

- Alternative Steel Lattice Tower
- Alternative OHL Alignment
- Limit of Deviation (Alternative OHL)
- Existing Access Track
- Existing Access Track (to be upgraded)
- Proposed Permanent Access Track
- Proposed Temporary Access Track
- Limit of Deviation (Access Track)
- Existing Wood Pole (H pole) (to be retained)
- Existing OHL (to be retained)
- Existing Wood Pole (H pole) (to be dismantled)
- Existing Wood Pole (H pole) (to be dismantled)
- Proposed\* Wood Pole (H pole) (to be retained)
- Proposed\* Wood Pole (H pole) (to be dismantled)

\*Proposed as part of Strathly Wood Wind Farm Grid Connection

Superficial Geology

- Alluvial Fan Deposits - Gravel, Sand, Silt And Clay
- Alluvium - Clay, Silt, Sand And Gravel
- Glaciofluvial Deposits - Gravel, Sand And Silt
- Hummocky (moundy) Glacial Deposits - Sand, Gravel And Boulders
- Lacustrine Deposits - Clay, Silt And Sand
- Peat - Peat
- River Terrace Deposits - Gravel, Sand And Silt
- Bedrock at or Near Surface



Reproduced by permission of Ordnance Survey on behalf of HMSO.  
Crown copyright and database right 2025 all rights reserved.  
Ordnance Survey Licence number AC0000848283.  
Superficial Geology data obtained via BGS WMS.  
Contains British Geological Survey materials © UKRI [2024]

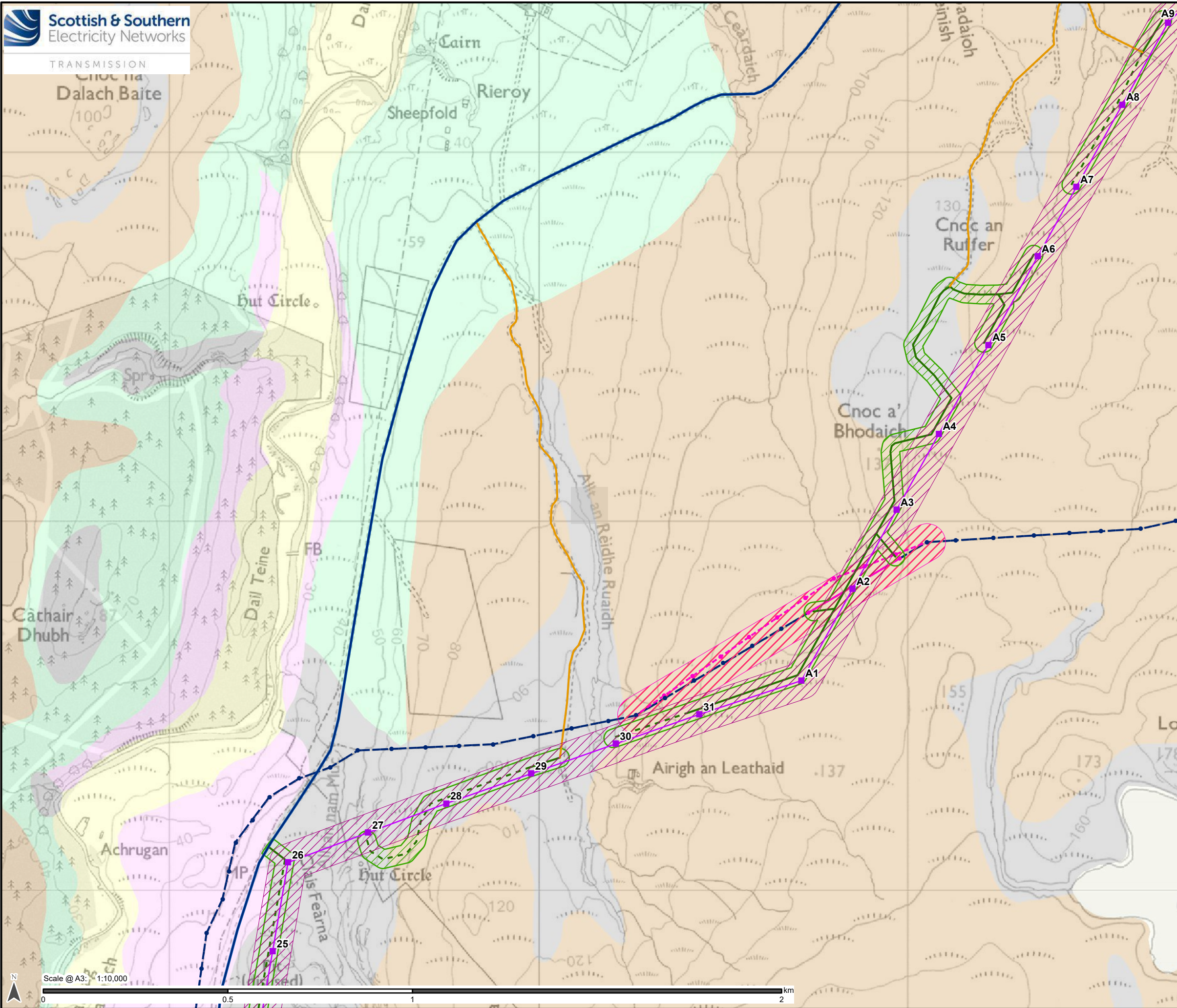
Project No: LT560  
Strathly South Wind Farm Grid Connection  
EIA Report - Peat Landslide Hazard and Risk Assessment

Title:  
Figure V5-7.1.3 - Superficial Geology  
Alternative Alignment  
Map 1

Drawn by: MM Date: 20/01/2025

Drawing: 428.013137.00001.00075.0



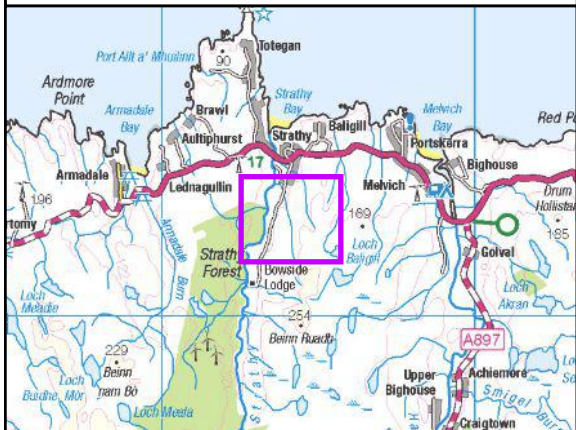


## Legend

- Alternative Steel Lattice Tower
- Alternative OHL Alignment
- Limit of Deviation (Alternative OHL)
- Existing Access Track
- Existing Access Track (to be upgraded)
- Proposed Permanent Access Track
- Proposed Temporary Access Track
- Limit of Deviation (Access Track)
- Existing Wood Pole (H pole) (to be dismantled)
- Temporary Wood Pole (H pole)
- Proposed Temporary OHL
- Limit of Deviation (Temporary OHL)
- Temporary UGC Alignment
- Existing Wood Pole (H pole) (to be dismantled)

### Superficial Geology

- Alluvium - Clay, Silt, Sand And Gravel
- Glaciofluvial Deposits - Gravel, Sand And Silt
- Hummocky (moundy) Glacial Deposits - Sand, Gravel And Boulders
- Peat - Peat
- Bedrock at or Near Surface



Reproduced by permission of Ordnance Survey on behalf of HMSO.  
Crown copyright and database right 2025 all rights reserved.  
Ordnance Survey Licence number AC0000848283.  
Superficial Geology data obtained via BGS WMS.  
Contains British Geological Survey materials © UKRI [2024]

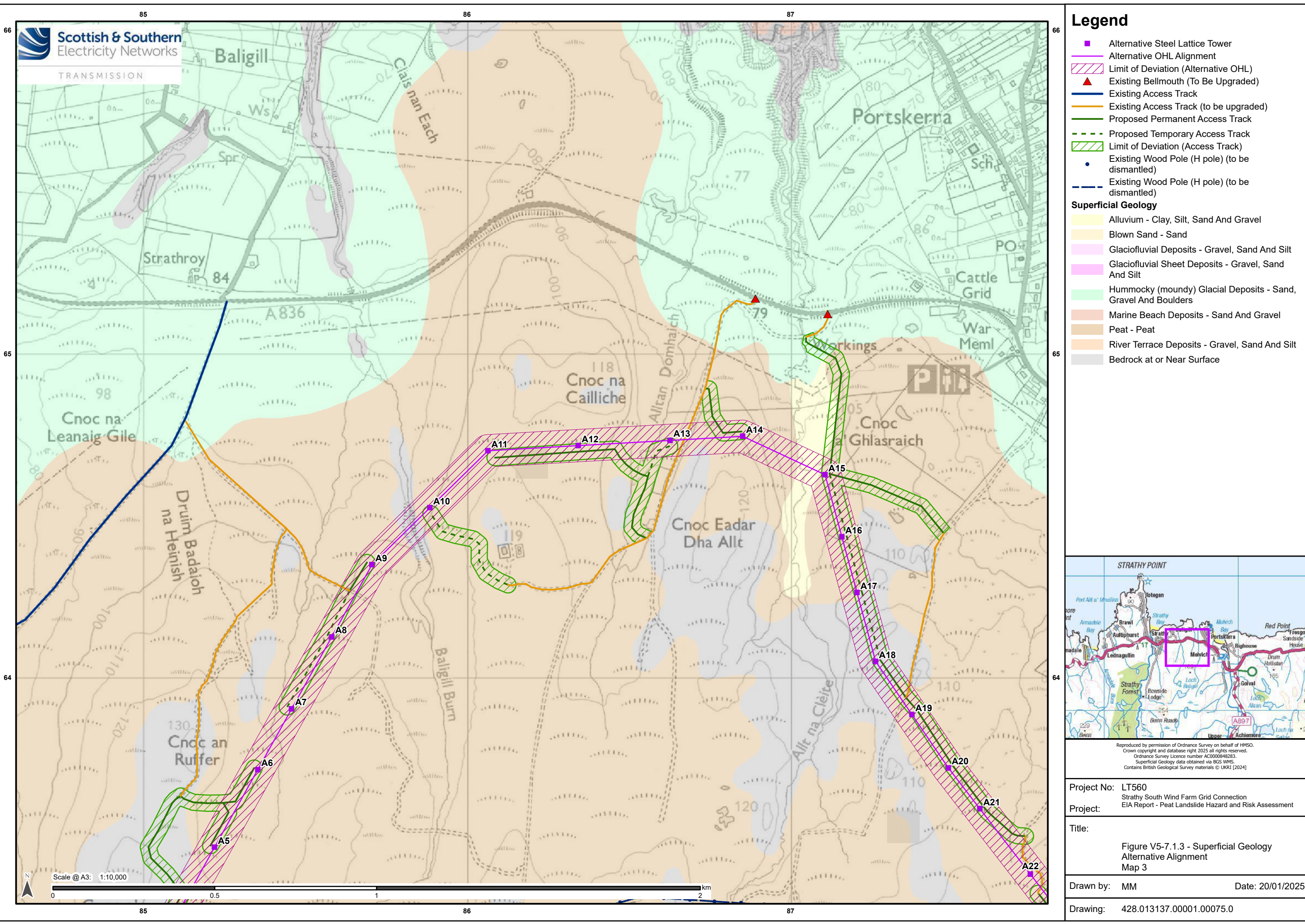
Project No: LT560  
Strathly South Wind Farm Grid Connection  
EIA Report - Peat Landslide Hazard and Risk Assessment

Title:  
Figure V5-7.1.3 - Superficial Geology  
Alternative Alignment  
Map 2

Drawn by: MM Date: 20/01/2025

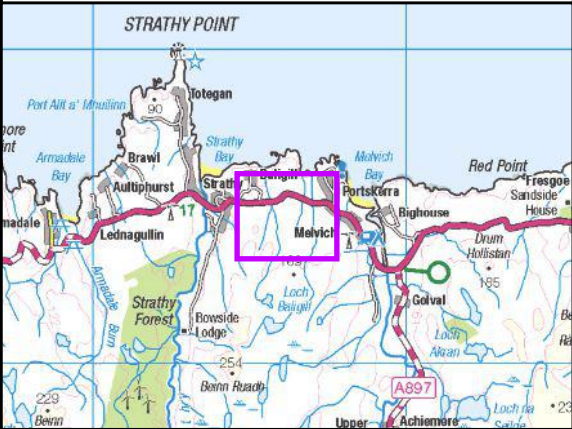
Drawing: 428.013137.00001.00075.0





Legend

- Alternative Steel Lattice Tower
  - Alternative OHL Alignment
  - Limit of Deviation (Alternative OHL)
  - Existing Bellmouth (To Be Upgraded)
  - Existing Access Track
  - Existing Access Track (to be upgraded)
  - Proposed Permanent Access Track
  - Proposed Temporary Access Track
  - Limit of Deviation (Access Track)
  - Existing Wood Pole (H pole) (to be dismantled)
  - Existing Wood Pole (H pole) (to be dismantled)
- Superficial Geology**
- Alluvium - Clay, Silt, Sand And Gravel
  - Blown Sand - Sand
  - Glaciofluvial Deposits - Gravel, Sand And Silt
  - Glaciofluvial Sheet Deposits - Gravel, Sand And Silt
  - Hummocky (moundy) Glacial Deposits - Sand, Gravel And Boulders
  - Marine Beach Deposits - Sand And Gravel
  - Peat - Peat
  - River Terrace Deposits - Gravel, Sand And Silt
  - Bedrock at or Near Surface



Reproduced by permission of Ordnance Survey on behalf of HMSO.  
Crown copyright and database right 2025 all rights reserved.  
Ordnance Survey Licence number AC0000848283.  
Superficial Geology data obtained via BGS WMS.  
Contains British Geological Survey materials © UKRI [2024]

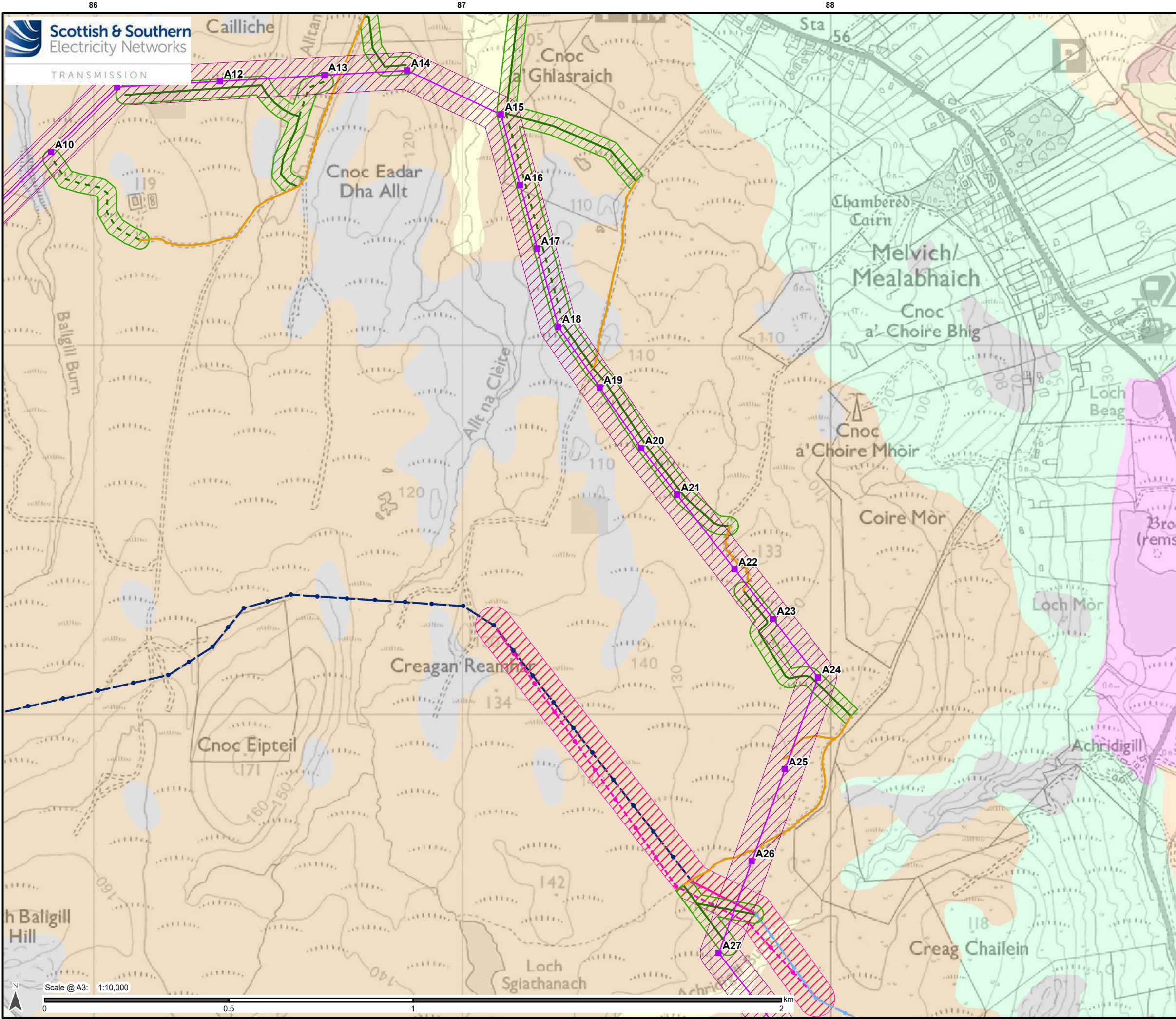
Project No: LT560  
Strathly South Wind Farm Grid Connection  
EIA Report - Peat Landslide Hazard and Risk Assessment

Title:  
Figure V5-7.1.3 - Superficial Geology  
Alternative Alignment  
Map 3

Drawn by: MM Date: 20/01/2025

Drawing: 428.013137.00001.00075.0





### Legend

- Alternative Steel Lattice Tower
- Alternative OHL Alignment
- Limit of Deviation (Alternative OHL)
- Existing Access Track (to be upgraded)
- Proposed Permanent Access Track
- Proposed Temporary Access Track
- Limit of Deviation (Access Track)
- Existing Wood Pole (H pole) (to be retained)
- Existing OHL (to be retained)
- Existing Wood Pole (H pole) (to be dismantled)
- Temporary Wood Pole (H pole)
- Proposed Temporary OHL
- Limit of Deviation (Temporary OHL)
- Temporary UGC Alignment
- Existing Wood Pole (H pole) (to be dismantled)

### Superficial Geology

- Alluvium - Clay, Silt, Sand And Gravel
- Blown Sand - Sand
- Glaciofluvial Deposits - Gravel, Sand And Silt
- Glaciofluvial Sheet Deposits - Gravel, Sand And Silt
- Hummocky (moundy) Glacial Deposits - Sand, Gravel And Boulders
- Marine Beach Deposits - Sand And Gravel
- Peat - Peat
- River Terrace Deposits - Gravel, Sand And Silt
- Bedrock at or Near Surface

Reproduced by permission of Ordnance Survey on behalf of HMSO.  
Crown copyright and database right 2025 all rights reserved.  
Ordnance Survey Licence number AC0000848283.  
Superficial Geology data obtained via BGS WMS.  
Contains British Geological Survey materials © UKRI [2024]

Project No: LT560  
Strathly South Wind Farm Grid Connection  
EIA Report - Peat Landslide Hazard and Risk Assessment

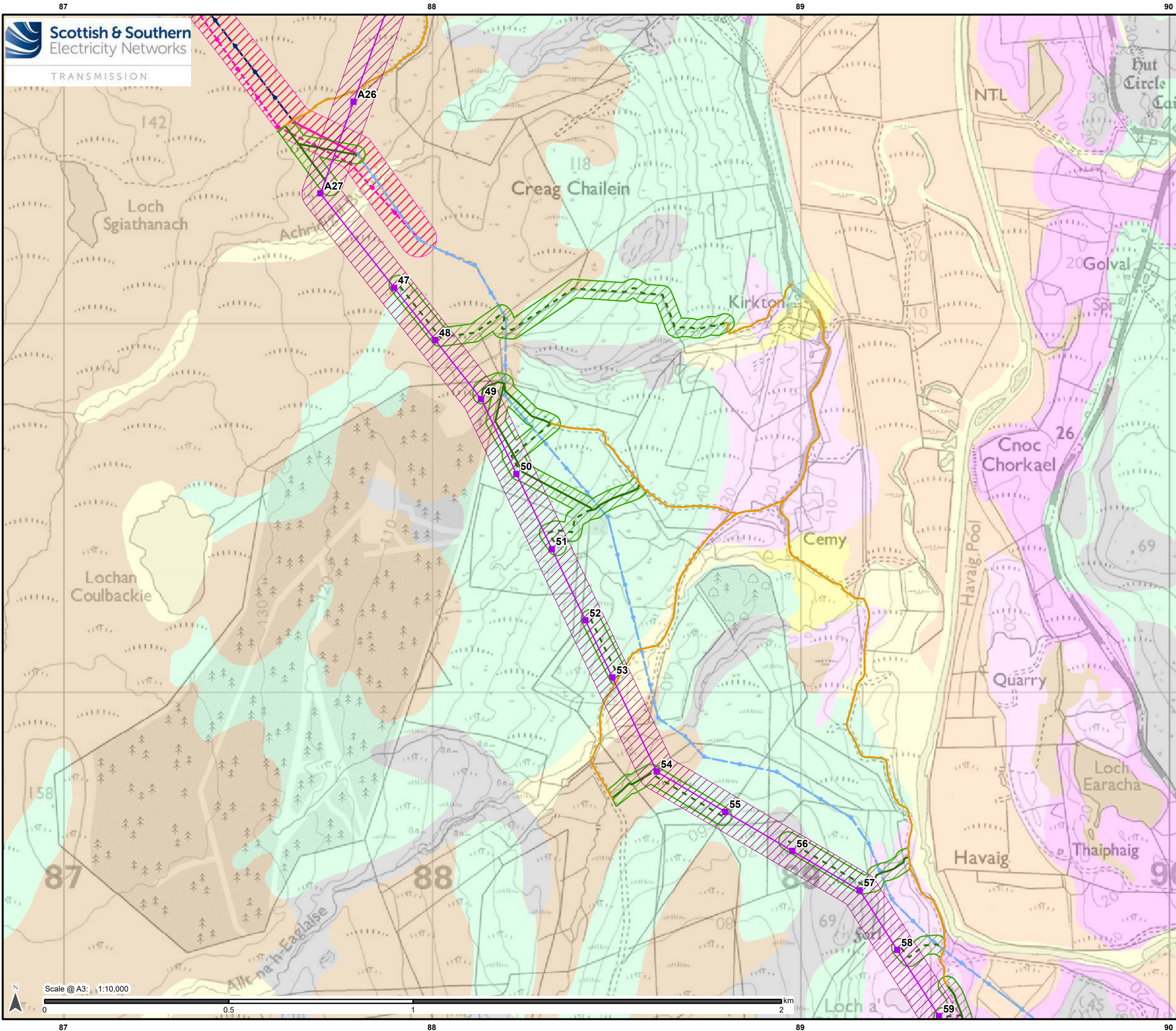
Project:

Title:  
Figure V5-7.1.3 - Superficial Geology  
Alternative Alignment  
Map 4

Drawn by: MM  
Date: 20/01/2025

Drawing: 428.013137.00001.00075.0



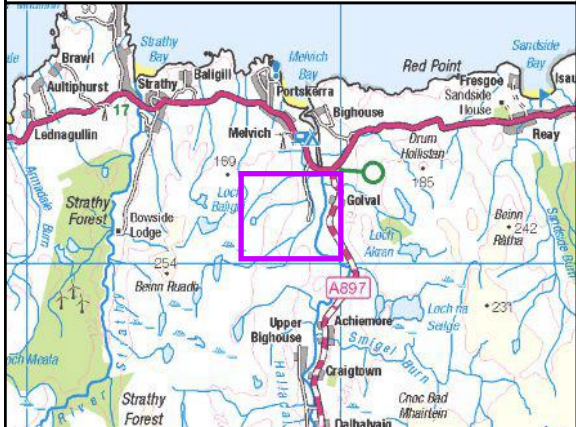


**Legend**

- Alternative Steel Lattice Tower
- Alternative OHL Alignment
- Limit of Deviation (Alternative OHL)
- Existing Access Track (to be upgraded)
- Proposed Permanent Access Track
- Proposed Temporary Access Track
- Limit of Deviation (Access Track)
- Existing Wood Pole (H pole) (to be retained)
- Existing OHL (to be retained)
- Existing Wood Pole (H pole) (to be dismantled)
- Temporary Wood Pole (H pole)
- Proposed Temporary OHL
- Limit of Deviation (Temporary OHL)
- Temporary UGC Alignment
- Existing Wood Pole (H pole) (to be dismantled)

**Superficial Geology**

- Alluvial Fan Deposits - Sand, Gravel And Boulders
- Alluvium - Clay, Silt, Sand And Gravel
- Glaciofluvial Deposits - Gravel, Sand And Silt
- Glaciofluvial Ice Contact Deposits - Gravel, Sand, Silt And Clay
- Glaciofluvial Sheet Deposits - Gravel, Sand And Silt
- Hummocky (moundy) Glacial Deposits - Sand, Gravel And Boulders
- Peat - Peat
- River Terrace Deposits - Gravel, Sand And Silt
- Bedrock at or Near Surface



Reproduced by permission of Ordnance Survey on behalf of HMSO.  
Crown copyright and database right 2025 all rights reserved.  
Ordnance Survey Licence number AC0000848283.  
Superficial Geology data obtained via BGS WMS.  
Contains British Geological Survey materials © UKRI [2024]

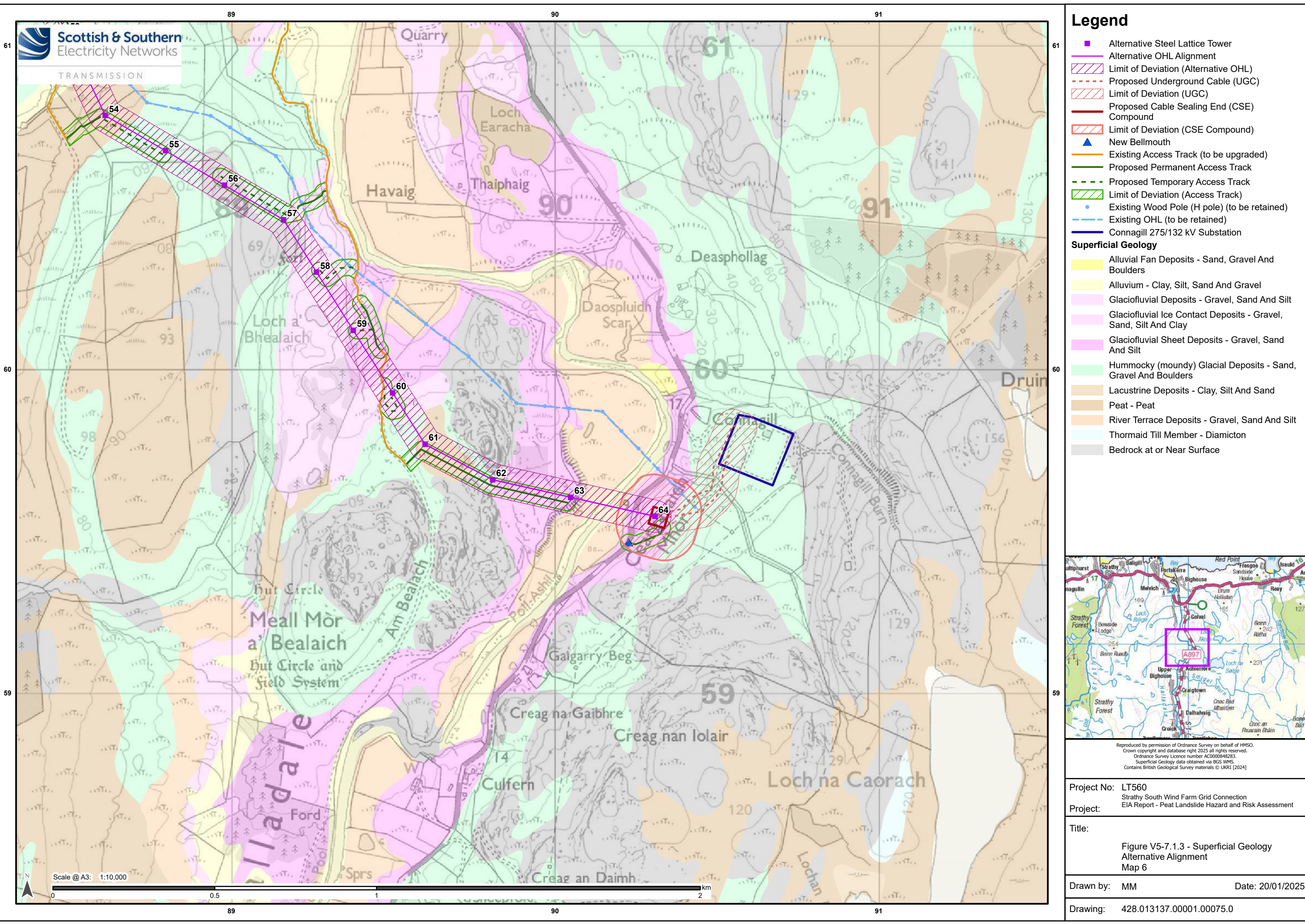
Project No: LT560  
Strathly South Wind Farm Grid Connection  
EIA Report - Peat Landslide Hazard and Risk Assessment

Title:  
Figure V5-7.1.3 - Superficial Geology  
Alternative Alignment  
Map 5

Drawn by: MM Date: 20/01/2025

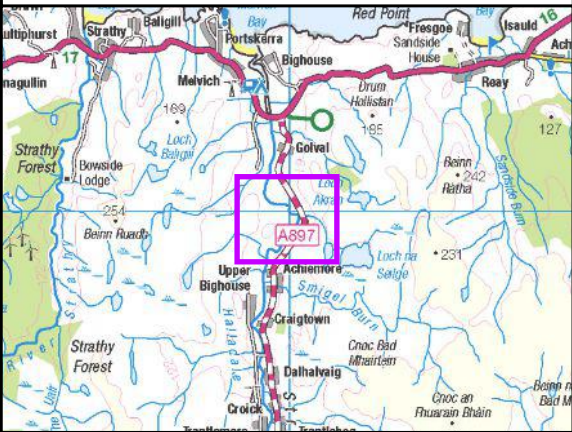
Drawing: 428.013137.00001.00075.0





**Legend**

- Alternative Steel Lattice Tower
  - Alternative OHL Alignment
  - Limit of Deviation (Alternative OHL)
  - Proposed Underground Cable (UGC)
  - Limit of Deviation (UGC)
  - Proposed Cable Sealing End (CSE) Compound
  - Limit of Deviation (CSE Compound)
  - New Bellmouth
  - Existing Access Track (to be upgraded)
  - Proposed Permanent Access Track
  - Proposed Temporary Access Track
  - Limit of Deviation (Access Track)
  - Existing Wood Pole (H pole) (to be retained)
  - Existing OHL (to be retained)
  - Connagill 275/132 kV Substation
- Superficial Geology**
- Alluvial Fan Deposits - Sand, Gravel And Boulders
  - Alluvium - Clay, Silt, Sand And Gravel
  - Glaciofluvial Deposits - Gravel, Sand And Silt
  - Glaciofluvial Ice Contact Deposits - Gravel, Sand, Silt And Clay
  - Glaciofluvial Sheet Deposits - Gravel, Sand And Silt
  - Hummocky (moundy) Glacial Deposits - Sand, Gravel And Boulders
  - Lacustrine Deposits - Clay, Silt And Sand
  - Peat - Peat
  - River Terrace Deposits - Gravel, Sand And Silt
  - Thormaidd Till Member - Diamicton
  - Bedrock at or Near Surface



Reproduced by permission of Ordnance Survey on behalf of HMSO.  
Crown copyright and database right 2025 all rights reserved.  
Ordnance Survey Licence number AC0000848283.  
Superficial Geology data obtained via BGS WMS.  
Contains British Geological Survey materials © UKRI [2024]

Project No: LT560  
Strathly South Wind Farm Grid Connection  
EIA Report - Peat Landslide Hazard and Risk Assessment

Title:  
  
Figure V5-7.1.3 - Superficial Geology  
Alternative Alignment  
Map 6

Drawn by: MM Date: 20/01/2025

Drawing: 428.013137.00001.00075.0