



Tangy IV and Cnoc Buidhe 132kV OHL Shared Use Connection project

Pre-application consultation feedback event

June 2026

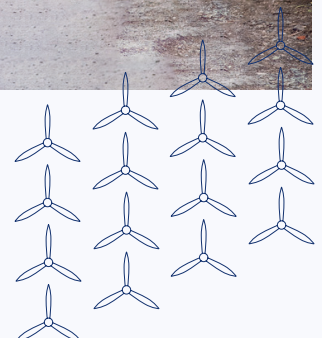


Contents

Powering change together	3	Addressing feedback	16
Project need and overview	4	3D visualisations	20
The consenting process	5	Project timeline	21
The story so far	6	Other projects in the local area	22
Why we are here today	6	Have your say	23
Selecting an alignment	8	Notes	24
About the overhead line	10	Your feedback	26
Our access strategy	14		

The event will be taking place on:

Wednesday 3 June, 2–7pm
Carradale Village Hall, Carradale, PA28 6SB



Powering change together

If we want to deliver on clean power and energy security targets and provide power for future generations, upgrades to Scotland's electricity transmission infrastructure are needed.

The shift to a cleaner, more sustainable future is about more than tackling the impact of climate change, it's about ensuring that future generations can thrive.

Countries around the world are investing in their energy infrastructure to support increasing electricity demands and to deliver on clean power targets and the UK is leading the way in building a modern, sustainable energy system for the future.



We all have a part to play

The UK and Scottish governments have set ambitious energy security and clean power targets, and we all have a part to play in delivering them.

At SSEN Transmission, we work closely with the National Energy System Operator (NESO) to connect vast renewable energy resources - like solar, wind, hydro and marine generation — to areas of demand across the country. Scotland will play a particularly big role in meeting increasing electricity demand.

But there is more to be done. By 2050, the north of Scotland is expected to contribute more than 50GW of low carbon power to the GB energy system. Today, the region has around 11GW of renewable generation connected to the network.

At SSEN Transmission, it is our role to build the energy system of the future. To do that, we are planning to invest around **£29 billion** in the coming years to upgrade the electricity transmission network in the north of Scotland. It's an investment that will unlock cleaner, more secure energy for homes and businesses now, and for generations to come.

By 2050, annual electricity demand is expected to at least double - our investment will support the connection of more clean power to meet that demand to the GB electricity network, supporting up to **17,500 jobs in Scotland**, with more than **8,000** of those in the north of Scotland, along the way.

Who we are

We are responsible for maintaining and investing in the electricity transmission network in the north of Scotland. We are part of SSE plc, one of the world's leading energy companies with a rich heritage in Scotland that dates back more than 80 years. We are also closely regulated by the GB energy regulator Ofgem, who determines how much revenue we are allowed to earn for constructing, maintaining and renovating our transmission network.

What we do

We manage the electricity network across our region which covers a quarter of the UK's land mass, crossing some of the country's most challenging terrain. We connect renewable energy sources to our network in the north of Scotland and then transport it to where it needs to be. From underground/subsea cables and overhead lines to electricity substations, our network keeps your lights on all year round.

Working with you

We understand that the work we do can have an impact on communities and we are committed to minimising our impacts and maximising all the benefits that our developments can bring to your area.

To do that we provide all the information you need to know about our plans and how they will impact communities like yours. The way we consult is also a two-way street and we want to hear people's views, concerns, or ideas – and harness local knowledge – so that our work benefits communities today and long into the future. You can share your views with us at: ssen-transmission.co.uk/talk-to-us/contact-us/

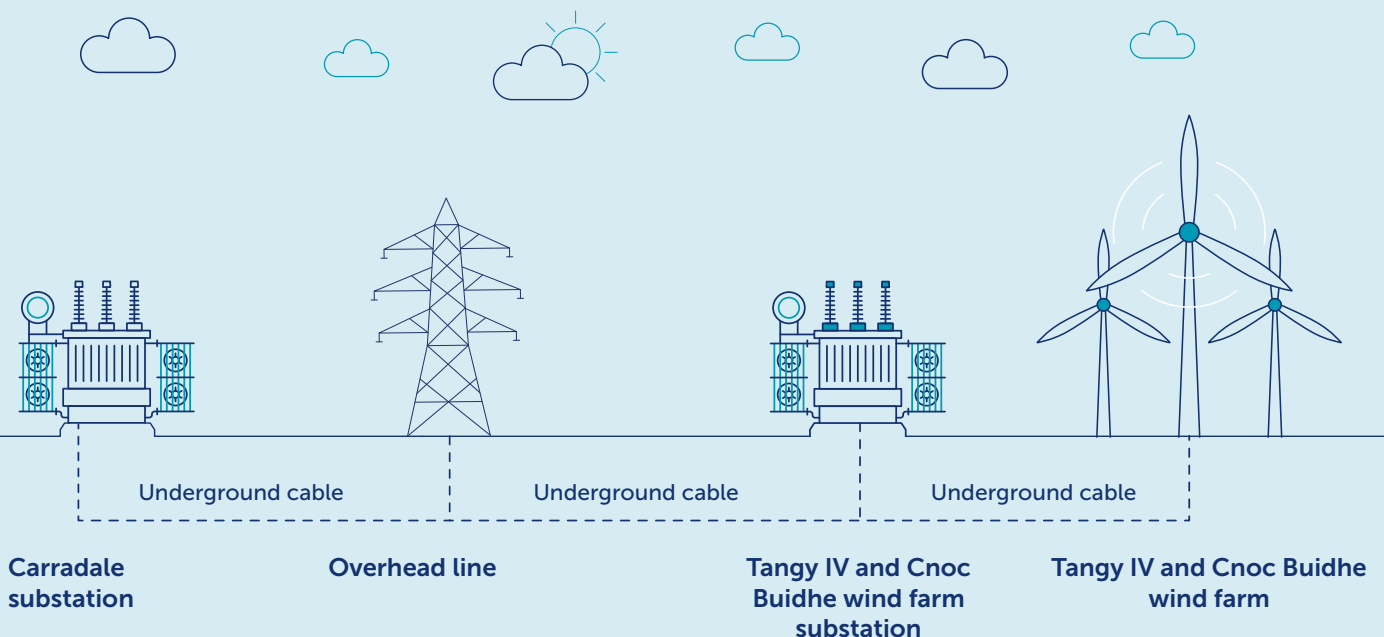
Project need and overview

SSEN Transmission, as the transmission licence holder in the north of Scotland, have a duty under Section 9 of the Electricity Act 1989 to facilitate competition in the generation and supply of electricity. We have obligations to offer non-discriminatory terms for connection to the transmission system, both for new generation and for new sources of electricity demand.

The consented Tangy IV wind farm and proposed Cnoc Buidhe wind farm in Argyll both require connection to the electricity network by 2029 and 2030 respectively. To facilitate this, we are proposing to construct and operate a new 132kV double circuit Overhead Line (OHL) and Underground Cables (UGC), between the Tangy IV wind farm and Cnoc Buidhe wind farm substations and the existing Carradale substation, approximately 10km north-west of Campbeltown, Argyll and Bute. Under our Network Operator's license this connection should be efficient, coordinated and economic, whilst having the least possible impact on the environment.

The Proposed Development comprises the construction and operation of a 132kV OHL shared use connection between terminal towers located at Collusca Watter, north of Tangy IV and land to the east of Rhonadale, north of Carradale. The approximately 13.5km OHL will be constructed using steel lattice towers. Sections of 132kV UGC will be required at either end of the OHL, totalling approximately 7km. To facilitate the connection, an extension to the existing Carradale substation will be required, involving the installation of transmission switchgear rated at a voltage of 132kV, to provide control of the connections of the Tangy IV and Cnoc Buidhe wind farms. A number of new permanent and temporary access tracks will also be required.

*Diagram not to scale, for illustration purposes only



The consenting process

The legislation governing the consenting of OHL projects in Scotland is the Electricity Act 1989. Applications for consent to construct and operate new overhead lines are made under Section 37 of this Act and are referred to as "Section 37 Consents".

The Section 37 application will be accompanied by an Environmental Impact Assessment (EIA) Report, as well as standalone reports such as a planning statement, socio economic report and detailed design drawings. A Pre-Application Consultation (PAC) Report will also be provided, and this will provide details of the public and stakeholder consultation undertaken, a summary of the feedback received, and our response to that feedback.

We plan to submit our Section 37 application to the Scottish Government's Energy Consents Unit (ECU) in Summer 2026. Once an application for consent has been submitted, all documents relating to the submission will be made publicly available on the ECU portal and our own website. A printed copy will also be available at the Library in Campbeltown. There will be an opportunity for the public to make formal representations to the ECU before a recommendation is made by them to the Scottish Ministers for a decision.

Please note that any comments made to us as the Applicant are not representations to Scottish Ministers as the decision makers. There will be opportunity to make formal representations to Scottish Ministers via the Energy Consents Unit following the submission of the section 37 application.

We will update stakeholders once the application for consent has been submitted and we will also publish newspaper advertisements to inform local communities and the general public of the applications being made to Scottish Ministers

Determining a Section 37 application and communicating outcomes

Section 37 applications are determined on a case-by-case basis by the Scottish Ministers.

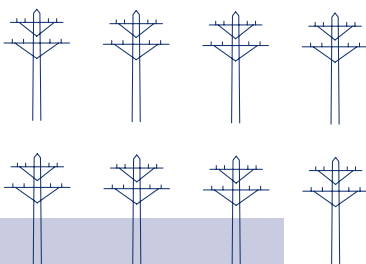
We anticipate receiving a decision on the consent application within 18 months from the application date, however timescales may vary.

When a decision is made, the ECU will send us a decision notice, copying in the local planning authorities and other consultation bodies. The decision notice is a record of the reasons for the decision and, if consent is granted, it contains the conditions that must be satisfied in order to implement the consent.

The ECU and local planning authority will publish the decision notice via their own channels, and we must publicize the outcome on our website, in the Edinburgh Gazette, and in a local newspaper. We'll also communicate the decision by mainstream media and other various means, including email updates to Elected Members and those signed up to project updates, social media, and press releases. Read more here about the Section 37 process here



[Read more about the Section 37 process here](#)



The story so far

Aug 22



We first introduced this project in August 2022, consulting on route option corridors for the overhead line.

Oct 22



The consultation closed on 28 October 2022, with 25 written responses received.

Apr 23



We published a Report on Consultation, confirming our proposed route and showing how the option taken forward to the next stage has been informed by this process.

Why we are here today

We are at the alignment stage of the development of our Tangy IV and Cnoc Buidhe Shared Use Connection Overhead Line project and have identified the Proposed Alignment we are taking forward to further develop and submit as part of an application for consent. The Proposed Alignment has been refined from the various options that we have investigated during the development of the project.

We are implementing the Scottish Government's Best Practice Guidance for pre-application consultation with stakeholders who may be affected by our development proposals.

The pre-application consultation comprises two consultation events that should be held in advance of applying for Section 37 consent. Our Alignment Selection Stage consultation events were held in September 2024, where we presented the Potential Alignment option and variants. Following these events, we considered stakeholder feedback, completed further surveys and review of our appraisals, and identified the Proposed Alignment, which is the alignment we intend to take forward to a Section 37 application. This second event presents further detail on the Proposed Alignment and

provides feedback to stakeholders in respect of comments they have provided on the proposals. Detailed feedback is also provided in the Alignment Selection Report on Consultation.

Prior to the pre-application consultations, we held public consultations in August 2022 on the routing stage of our project development. These consultations were in addition to the pre-application consultation events and the feedback received has been fundamental in shaping the design of the Proposed Alignment that we are now presenting.

We will provide updated 3D visualisations and maps to show what the proposed overhead line will look like and where it will be located. These are available to view and download from our project website: [ssen-transmission /tangy-iv-and-cnoc-buidhe-shared-use](https://www.ssen-transmission.co.uk/tangy-iv-and-cnoc-buidhe-shared-use)

It should be noted that our alignment proposal presented at this consultation is the result of extensive engagement and project design, as such, there is limited scope to make significant changes to the proposals at this stage.

Sep 24



We consulted on the alignment options for the shared use connection between Tangy IV and Cnoc Buidhe wind farms.

Oct 24



The Consultation closed on 25 October with 8 responses received

Aug 25



Following consideration of the feedback received during our 2024 engagement and further studies and survey work, we published our Alignment Selection Report on Consultation. We confirmed the Proposed Alignment that we will look to take forward in our Section 37 consent application.



Scan the QR code to access the Scottish Government's Best Practice Guidance

Selecting an alignment

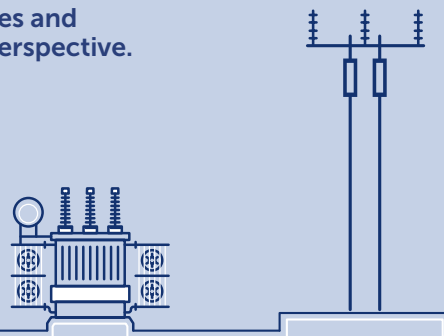
The consideration of alignment options and design solutions brings together work by four main disciplines:

Engineering Team

Who identify engineering constraints and where overhead lines and cables can be installed from a construction and operational perspective.

Key considerations include:

- Infrastructure crossings
- Environmental design
- Ground conditions
- Accessibility
- Proximity to existing infrastructure and properties



Environmental Team

Who identify key environmental, community and social constraints along the routes which the new infrastructure could impact upon.

Key considerations include:

- Engagement with statutory consultees and planning authorities
- Results of specialist environmental surveys including archaeology, ornithology, ecology, geology and hydrology
- International environmental designations including Special Areas of Conservation (SACs - designated for habitats), Special Protected Areas (SPAs - designated for bird species), Sites of Special Scientific Interest (SSSI), Ramsar sites (wetlands of international importance identified under the terms of the Ramsar Convention) and World Heritage Sites
- National designations including Scheduled Monuments, Listed Buildings, National Scenic areas, National Nature Reserves, Gardens and Designed Landscapes
- Regional environmental sensitivities including Wild Land Areas and Special Landscape Areas
- Local environmental aspects including visual amenity, local and RSPB nature reserves, recreation uses

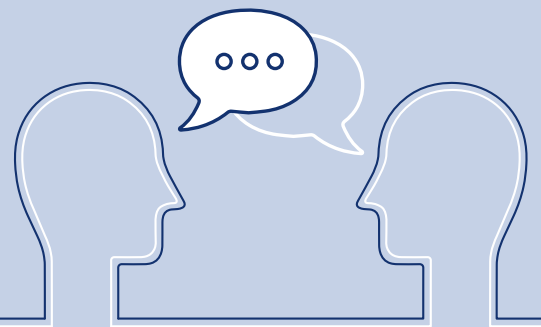


Communities Team

Who work with communities and make sure that their feedback during the consultation process is closely considered during project refinement.

Key considerations include:

- Community engagement
- Consultation responses review
- Recreational areas and areas of local interest



Land Team

Who engage with landowners to identify key land use constraints.

Key considerations include:

- Landowner engagement
- Mitigating effects of infrastructure on land and properties
- Reaching land agreements



Striking a balance

When selecting an alignment, we need to carefully balance key considerations relating to engineering, environment, cost and social aspects, in each section of the overhead line route. We then consider the likely effect and level of impact of each consideration, which will vary from section to section.

This can be based on how populated the area is, the outcomes of environmental and engineering surveys, the presence of peat, the local water environment, if there is existing infrastructure we need to avoid, if the effects on land and property can be mitigated and if a constructable alignment can be identified.

Ultimately, we need to balance a range of factors and present the solution we consider most viable, to then put forward for consultation. We consulted on our Potential Alignment in October 2024 and confirmed the alignment option we were taking forward as the Proposed Alignment

within our Alignment Selection Report on Consultation published in August 2025.

Our Alignment Selection Report on Consultation details the consultation responses received as part of our alignment consultation process for the project and where appropriate, shows how the Proposed Alignment being taken forward to consent has been informed by this process. This can be downloaded from the project webpage or viewed during the events.



Scan the QR code to view our Report on Consultation

About the overhead line

132kV double circuit overhead line

The proposed connection will use steel lattice towers constructed from fabricated galvanised steel. It would be grey in colour and will be based on the 'L7' series of steel lattice tower which can vary in height between 23m and 44m (allowing for potential extensions required to maintain conductor ground clearance). The proposed tower heights for this connection, based on the current assessments, are between 26m and 36m. Towers will carry two circuits, each with three phase conductors supported from insulators attached to the horizontal cross arms on both sides of each steel lattice tower. Insulators are proposed to be glass, but can also be made of other material, either porcelain, or composite materials. The span lengths (distance between towers) will vary depending on topography and land use, for the L7 standard tower the typical span length is approximately 290 metres. The tower height and the distance between them are subject to deviations depending on several factors, such as altitude, climatic conditions and topography.

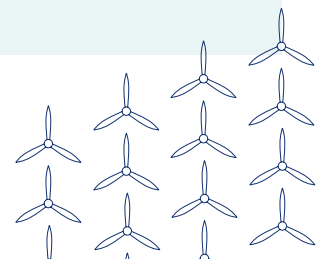
Two sections of 132kV Underground Cable (UGC) will be required as the Proposed Development leaves Tangy and Cnoc Buidhe Wind Farms' on-site-substations, as well as on the final approach to Carradale substation, given the presence of electrical infrastructure and future wind turbines at these points. A terminal structure consisting of terminal tower with Cable Sealing End Platform (CSEP) will be required to facilitate the transition between OHL and UGC.



Steel lattice tower double circuit (L7 series)

Additional works required as part of the construction of the new overhead line include:

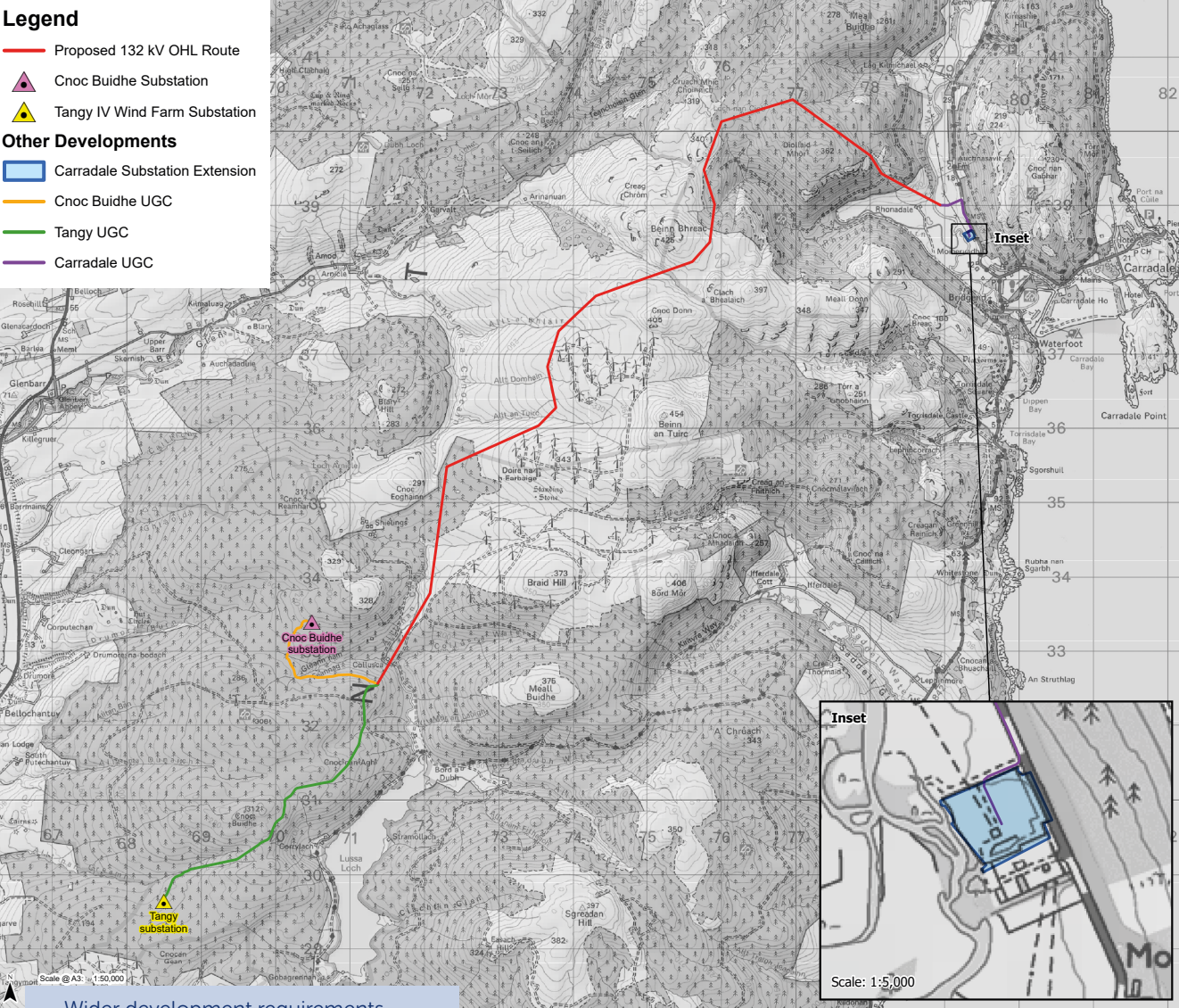
- Upgrade of existing and creation of new access tracks;
- Vegetation clearance and management;
- Temporary working areas around the proposed tower locations to facilitate construction;
- At some tower locations, the formation of temporary flat areas from which the conductors (wires) will be pulled through during construction. These areas will contain earthed metal working surfaces referred to as Equipotential Zones (EPZs);
- Other temporary measures required during construction, such as measures to protect roads and water crossings during construction (e.g. scaffolding, culverts/bridges);
- Temporary construction compounds will also be required at locations along the overhead line route. The final location and design of temporary site compounds will be confirmed by our Principal Contractor and separate planning consents will be sought as required.



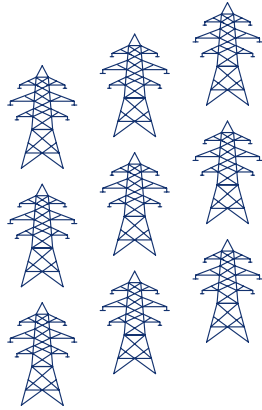
Tangy IV and Cnoc Buidhe 132kV OHL Shared Use Connection project

Legend

- Proposed 132 kV OHL Route
- ▲ Cnoc Buidhe Substation
- ▲ Tangy IV Wind Farm Substation
- Other Developments**
- Carradale Substation Extension
- Cnoc Buidhe UGC
- Tangy UGC
- Carradale UGC

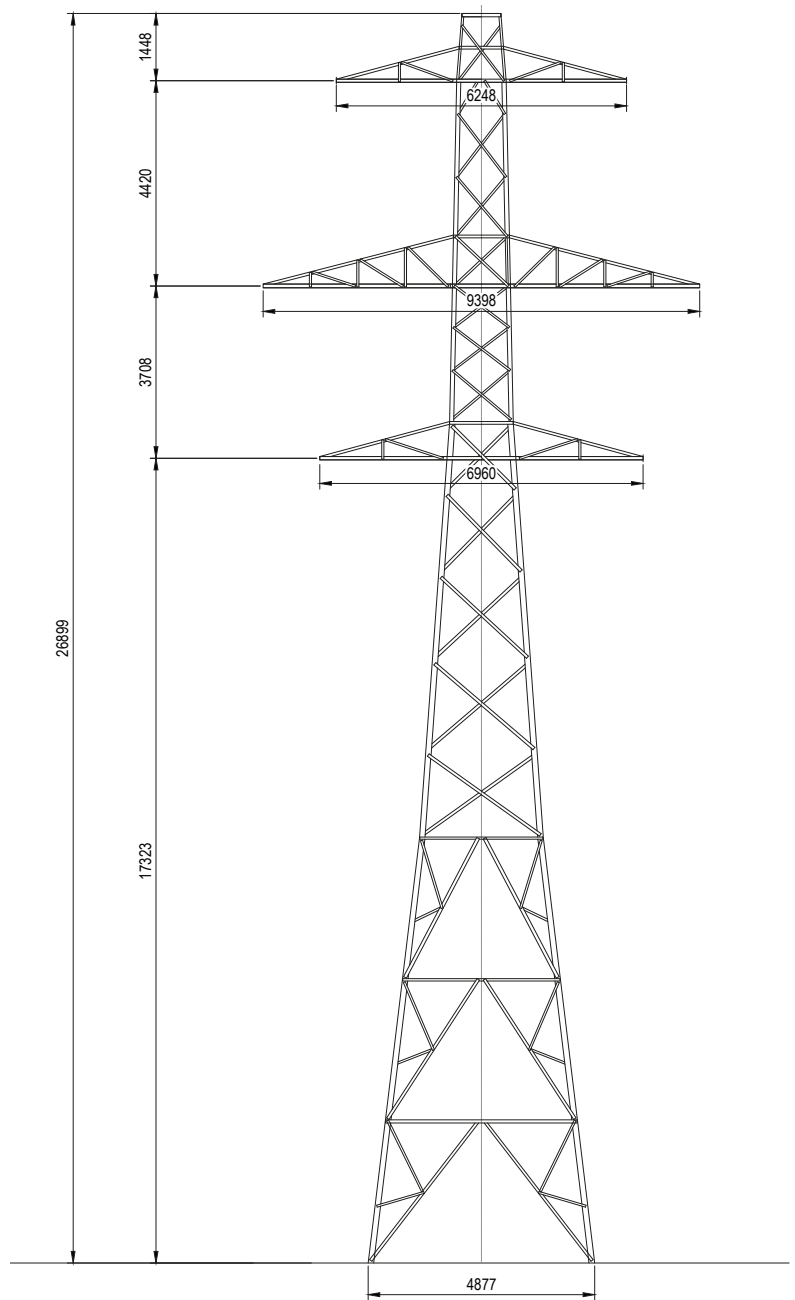


Wider development requirements

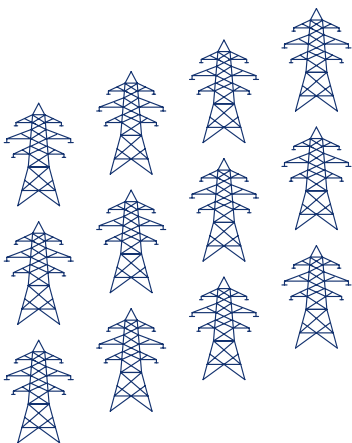


Operational corridor

The development of the Proposed Alignment has sought to avoid and minimise impacts on woodlands and forestry where possible, however due to part of the project area being forested, impacts on forestry are unavoidable. Where the proposed overhead line alignment passes through areas of woodland and commercial forestry, an operational corridor is identified to ensure the safe operation of the overhead line. Trees are removed within the operational corridor to facilitate construction and ensure continued safe operation of the overhead line. The width of the operational corridor will vary depending on the type of woodland or forestry and local topography but will typically require a width of 40m either side of the overhead line centerline in coniferous woodland. The required operational corridor through area of woodland will be confirmed within our Section 37 consent application, following completion of ongoing woodland assessments. The construction of the project will result in a loss of woodland area. In accordance with the Scottish Government's Control of Woodland Removal Policy, we are committed to providing appropriate compensatory planting for any net loss of woodland. The extent, location and composition of compensatory planting will be agreed with Scottish Forestry and the local authority.



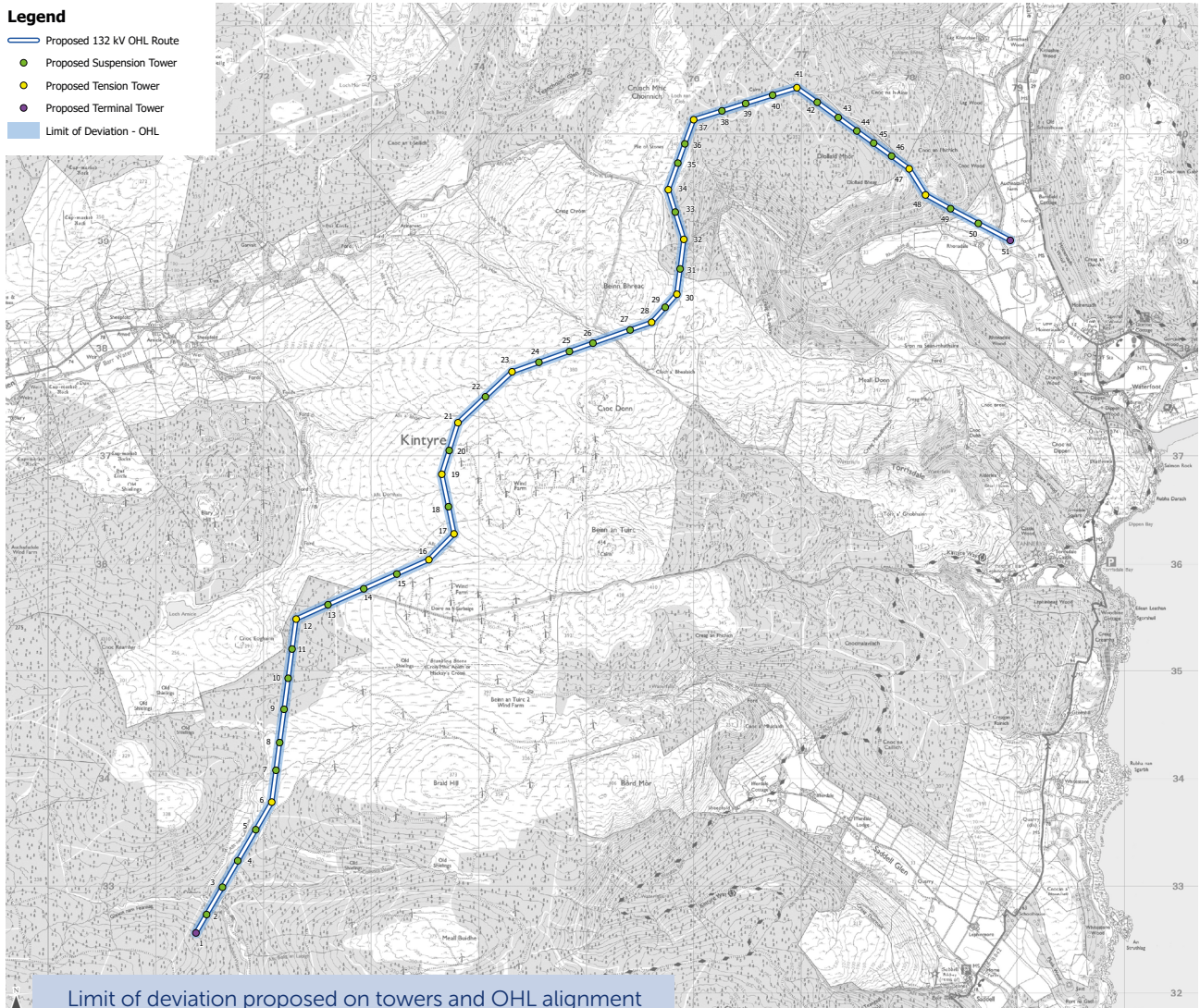
Please note, this graphic is an indicative representation of the standard height and not average height of each tower type. This is because the average height depends on the specific topography encountered by each overhead line.



Limit of Deviation (LoD)

The LoD comprise an area which defines the practical limits within which micro-siting of the overhead line infrastructure and access tracks can be sited and construction can be undertaken within the terms of the Section 37 consent. The location of the proposed tower positions, access tracks and associated temporary and permanent infrastructure (as illustrated on the maps provided) has been determined based on environmental and technical considerations, including engineering analysis of ground conditions and suitability based on desk studies and site walkover surveys. Investigation of sub-surface and geotechnical conditions at the proposed tower locations has not yet been completed. It is therefore possible that individual tower locations, working areas and access tracks may be subject to minor changes in position post determination of the S37 application and completion of geotechnical investigations (referred to as micro siting).

To strike a balance between providing certainty of the location of the proposed development and any environmental impacts, and the need for some flexibility over individual tower locations, the horizontal and vertical LoD need to be defined within which the proposed development will be constructed. No towers or working areas would be located outside the proposed LoD. As we develop our Environmental Impact Assessment (EIA) and undertake more detailed design work, we are working to identify the exact LoD required for the project, based on site-specific environmental constraints and engineering considerations. At this time, we have allowed for a horizontal LoD of up to 50m on either side of the alignment centreline, extending to 100m around angle tower positions, where larger temporary working areas will be required. A vertical LoD of $\pm 6.5\text{m}$ is likely to be sought for the proposed tower heights, to ensure that minimum statutory ground clearances can be maintained once further engineering design work has been completed.



Our access strategy







We are currently developing our access strategy, which considers access requirements for construction and maintenance of the overhead line. Access requirements have also informed the Proposed Alignment selection process, as a key engineering consideration. We are now determining the proposed access routes for each tower location to establish which existing access tracks need to be upgraded alongside locations for the installation of new temporary or permanent access tracks. Maps showing our current plans for access are available on the project website, and further information on our access strategy will be provided in the EIA as part of the application for Section 37 consent.

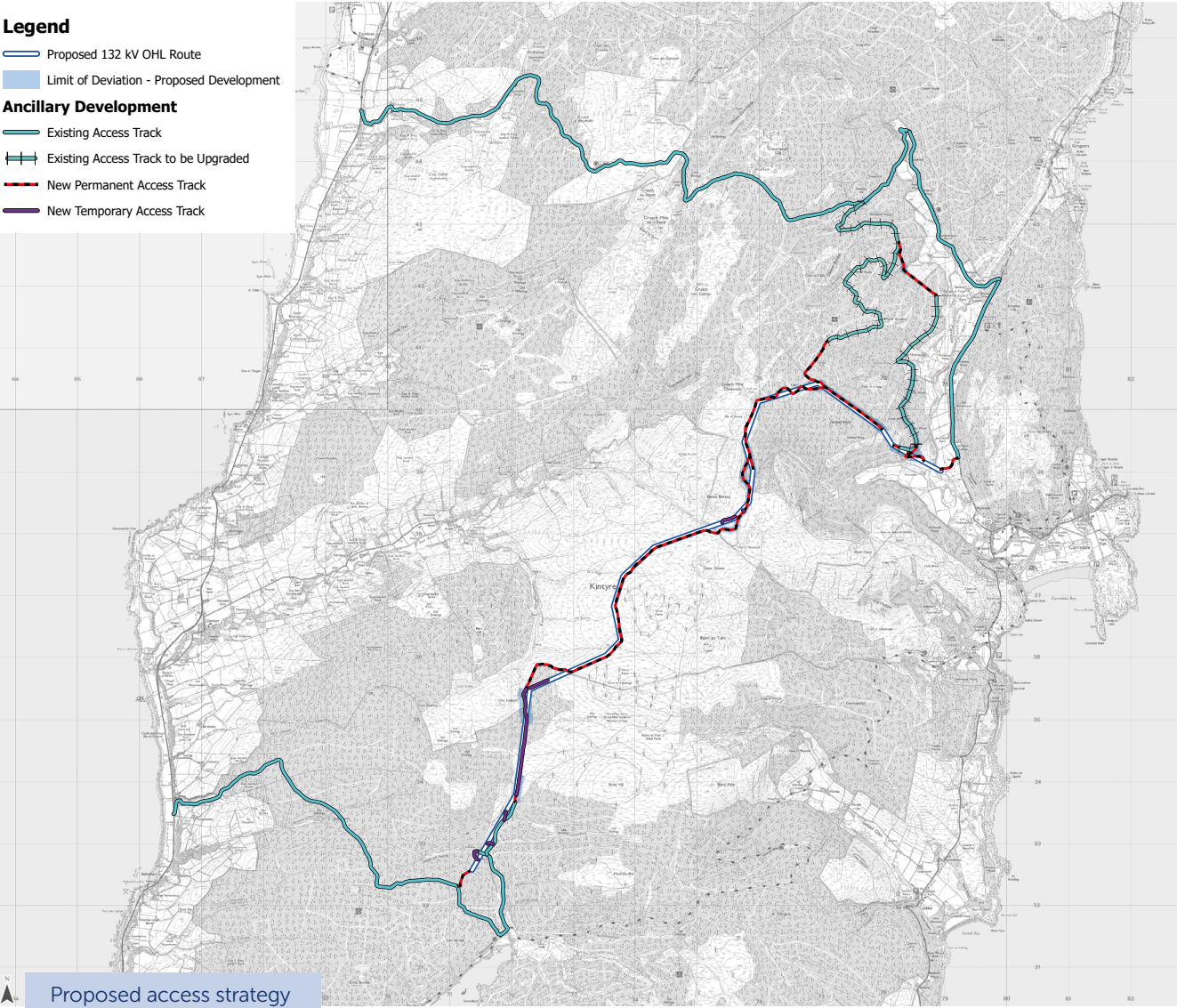
A detailed traffic and transport assessment will form part of the EIA, which assesses potential impacts of construction traffic and the capacity of local roads to accommodate this traffic. A Construction Traffic Management Plan (CTMP) will be agreed with the local authorities prior to works commencing.

The table below explains the different types of tracks that are typically considered and what they are required for.

Type of access	What does it mean?
Existing tracks and bellmouths	In general, proposed construction site access would be taken via the existing public road network and would make use of existing forest and estate tracks as far as practicable, upgraded as required. Existing bellmouths would be utilised where possible, subject to improvements. New bellmouths will however still be required at several locations.
Stone tracks	Typically, new temporary stone tracks are likely to be required to access each steel tower location, as well as the requirement for inline access between towers. Stone tracks are designed to suit the heavy plant loads required for construction works for steel towers, and to suit the varied ground conditions along the route. On completion of construction, unless required for operational access, the stone tracks would be removed and the original material reinstated. Where access to tower positions is difficult due to steep terrain, alternative methods would be proposed such as using smaller items of plant, specialist tracked plant, and in some cases using helicopters for moving materials.
Access tracks	Where operational access is required, this would likely range from All Terrain Vehicle (ATV) routes with no formal track, to stone road suitable for 4x4 and wagon access. The selection of the type of track required (whether it be temporary or permanent, existing upgraded tracks or new tracks) will consider the proximity to a public road, environmental impacts, structure type, required vehicle use, and potential maintenance activities, including vehicles required in future to a given location (taking health and safety requirements into account). General access track details will be included in the EIA stage of the project and presented to illustrate where each access type will be deployed, and the rationale for that selection.

Legend

-  Proposed 132 kV OHL Route
-  Limit of Deviation - Proposed Development
- Ancillary Development**
-  Existing Access Track
-  Existing Access Track to be Upgraded
-  New Permanent Access Track
-  New Temporary Access Track



Proposed access strategy

Addressing feedback

Consulting on the alignment

In September 2024, we launched our alignment consultation, seeking comment on the Potential Alignments options and variants identified for the new 132kV overhead line joint connection between Tangy and Cnoc Buidhe wind farms to the transmission network. We sought comments from statutory authorities, key stakeholders, elected representatives, the public and landowners on the alignment selection process undertaken and the Potential Alignment options and variants. Comments received then informed further consideration of the Potential Alignment with a view to confirming a Proposed Alignment to be taken forward to consent application.

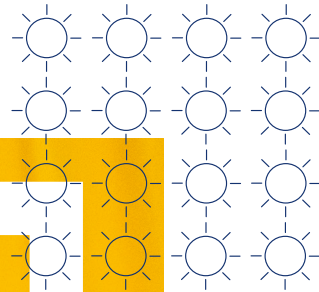
When we consulted in September 2024, we held events in two locations along the length of the alignment between Glenbarr and Carradale. A total of 39 attendees were recorded. During the 5-week feedback period, which closed on 28 October 2024, 8 responses were received. This feedback was then analysed by the project team to determine where changes could be considered.

Our Report on Consultation (ROC)

A detailed appraisal of feedback received in response to our alignment as presented during the September 2024 consultation can be accessed via our Alignment Selection Report on Consultation, published March 2025.



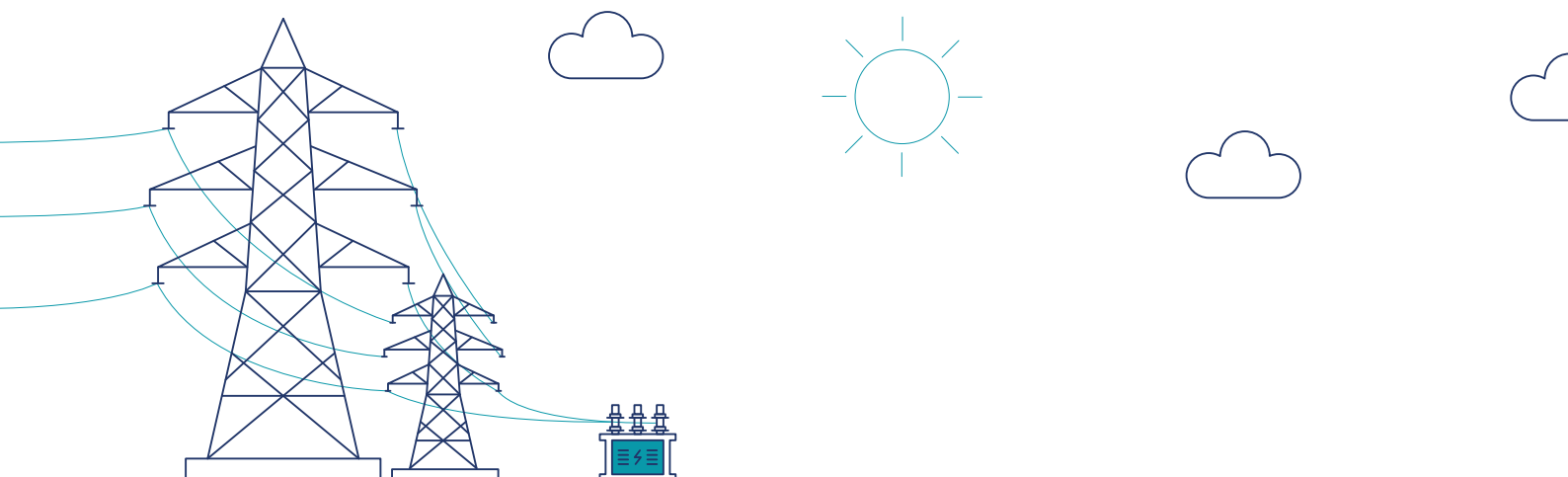
Scan the QR code to access our ROC



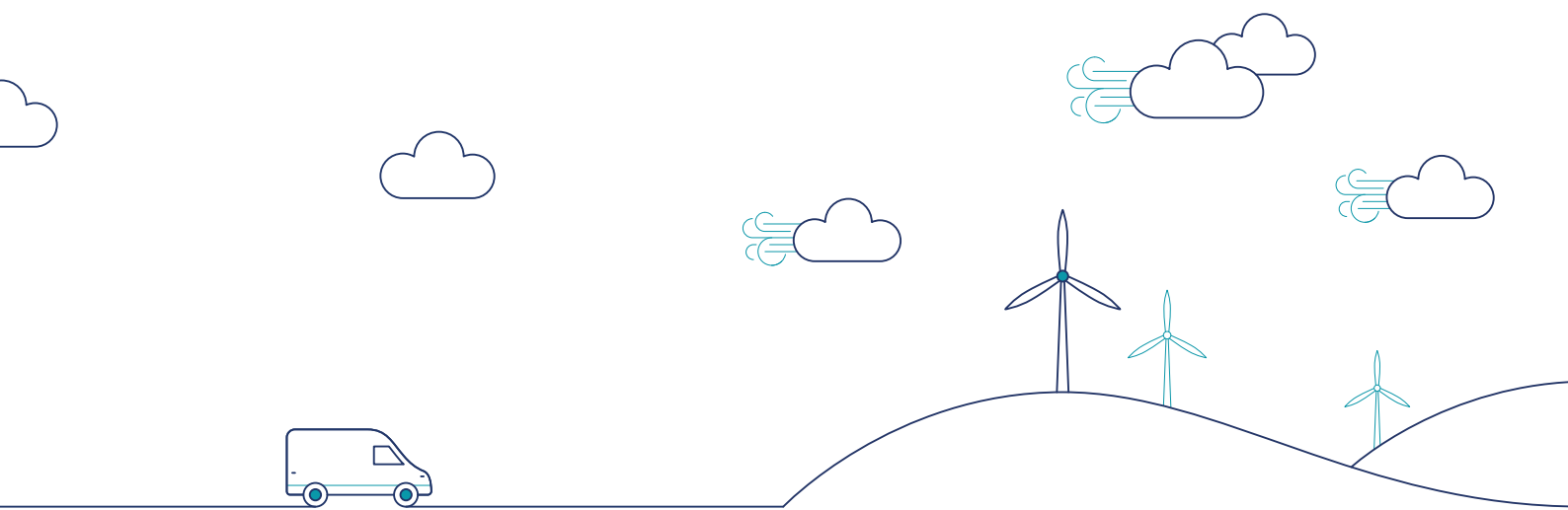
We have included a summary of key feedback about our alignment received from communities, landowners and statutory stakeholders, alongside our response to this feedback in the following table

Feedback	Response
<p>Concerns raised about the visual impact on the local landscape</p>	<p>The landscape sensitivities and cultural significance of the eastern part of the Proposed Development have been considered during the routeing and alignment selection stages, and will continue to be assessed as the project progresses to the EIA. The EIA Report will include a specific chapter for the Landscape and Visual Impact Assessment (LVIA) and will also consider the potential for wider cumulative impacts when viewed against the backdrop of other existing and planned infrastructure in the area. The EIA Report will include photomontages showing visual projections of the appearance of the OHL at each key viewpoint. The EIA will consider the cumulative impacts of the Proposed Development, arising in combination with other planned electricity transmission connections, and other planned developments where impacts are predicted. The findings of the cumulative assessment will be set out in the EIA Report.</p>
<p>Consideration has been given to local wildlife such as birds and butterflies but not to local livestock and crop</p>	<p>As part of the alignment design and appraisal work agriculture and farming issues were factored into the appraisal process, however unavoidably the Proposed Development will need to cross some areas of agricultural land. It is recognised that the proposed infrastructure may impact agricultural operations, and SSEN Transmission will work with landowners to minimise operational impacts where possible. SSEN Transmission are committed to reinstating affected farmland to its original condition. SSEN Transmission’s contractors will be required to prepare a Construction Environmental Management Plan prior to commencement of construction. The CEMP will ensure that best practice measures are employed during construction to control noise, dust, and prevent pollution and to ensure sound biosecurity measures are employed to protect farms and prevent the spread of diseases. Drainage concerns are also noted and will be fully considered, measures will be identified in liaison with landowners and SEPA to minimise impact to drainage.</p>
<p>Concern for current and future food production</p>	<p>As part of the alignment work, OHL impacts on agriculture and farming were factored into the appraisal process, however unavoidably the Proposed Development will need to cross some areas of agricultural land. SSEN Transmission are aware of the legislative requirements and policy regarding agricultural land. Potential impacts on Land Use have been assessed as part of the EIA Scoping. It was determined that these impacts would be minor temporary and localised, and have been scoped out of further assessment. The permanent loss of land to towers and access tracks will be managed through agreements with relevant landowners and farmers. SSEN Transmission will continue to engage with landowners as the project progressed to the next stage.</p>

Feedback	Response
<p>Concerns around the lack of benefits for the local community</p>	<p>Following an extensive stakeholder consultation exercise in 2023, SSEN Transmission launched its first Community Benefit Fund in 2024 to fund a range of community projects across the north of Scotland. There are two types of fund open to projects in SSEN Transmission’s network area. Not for profit, constituted groups can apply for funding. The Community Benefit Fund plans involve a local and a wider regional element. The Argyll Regional Fund launched in Argyll in May 2026</p>
<p>Concerns around the increase in traffic and the wear and tear on certain roads in the local area</p>	<p>Impacts on traffic and transportation will be assessed as part of the Environmental Impact Assessment (EIA). A Traffic and Transport Assessment will be undertaken, and where appropriate we will consider potential impacts in relation to construction traffic. Access locations for construction and maintenance will seek to utilise existing roads and access tracks (upgrading where required) as far as practicable to reduce the need for new accesses. Full consideration will be given to assessing the impacts of the project on road safety and road-users, and every effort will be made to ensure access to properties, fields and local facilities is maintained. A Construction Traffic Management Plan (CTMP) will also be produced. This will require approval from Transport Scotland and local authorities. We will undertake specific liaison with Transport Scotland and Local Authority Roads Departments as the project develops to agree measures for public road improvements, temporary traffic management, and other mitigation that may be required. We and their appointed contractors are required to return roads and access points to the same or better condition than before the project commenced, and any damage to roads and access points caused by the project will be fully repaired. Surveys and photographs will be undertaken before works begin to assess the condition of the roads and access points in advance of works commencing. Monitoring and photographs will then be taken throughout construction programme to ensure the roads are safe and usable. Repairs will be carried out to address any issues as they emerge. A survey will also be undertaken on completion of the works</p>



Feedback	Response
<p>Concerns about health risks</p>	<p>We would like to reassure you that infrastructure is developed, built and operated to meet all health and safety legislation and guidance set by relevant bodies - including the UK Government, Scottish Government, the Health and Safety Executive and our regulator, Ofgem – including that associated with Electro Magnetic Fields (EMFs). In respect of EMFs, we strictly follow the guidance as set by the UK Government, which in turn is informed by international guidance. As well as setting exposure limits that protect against known, established effects of EMF; the UK Government’s guidance also includes precautionary measures to protect against possible effects below the exposure limits that have not been established by science. In addition to this, the UK Health Security Agency and Department of Health have a remit to review new research in this area and ensure that current guidelines and policies are reflective of that research. Furthermore, the UK Government’s latest policy on EMF is set out in National Policy Statement EN-5 12 which was reissued in November 2023 and came into force on 17 January 2024. This latest policy is reflective of that review process and in line with the NPS EN-5, the current UK Government guidance, informed by relevant international guidance, is therefore still considered appropriate by the UK Government and their public health experts. Whilst electricity consenting decisions are devolved to Scottish Ministers and the NPS EN-5 is therefore not all relevant in Scotland, we can confirm compliance with all EMF guidance as set out in the NPS EN-5. There have been over four decades of research looking into whether EMF can cause health effects and there are no established effects below the exposure limits. When we design overhead lines, substations and cables it is ensured that they will not exceed those exposure limits, even when operating at 100% capacity. We will provide information on compliance as part of the consenting process, which will be publicly available. In summary, the guidance followed, which remains subject to ongoing review as required, ensures that safety measures will be applied to the 400kV overhead line infrastructure protecting the public against EMF exposure, keeping the network safe for the public.</p>



3D visualisations

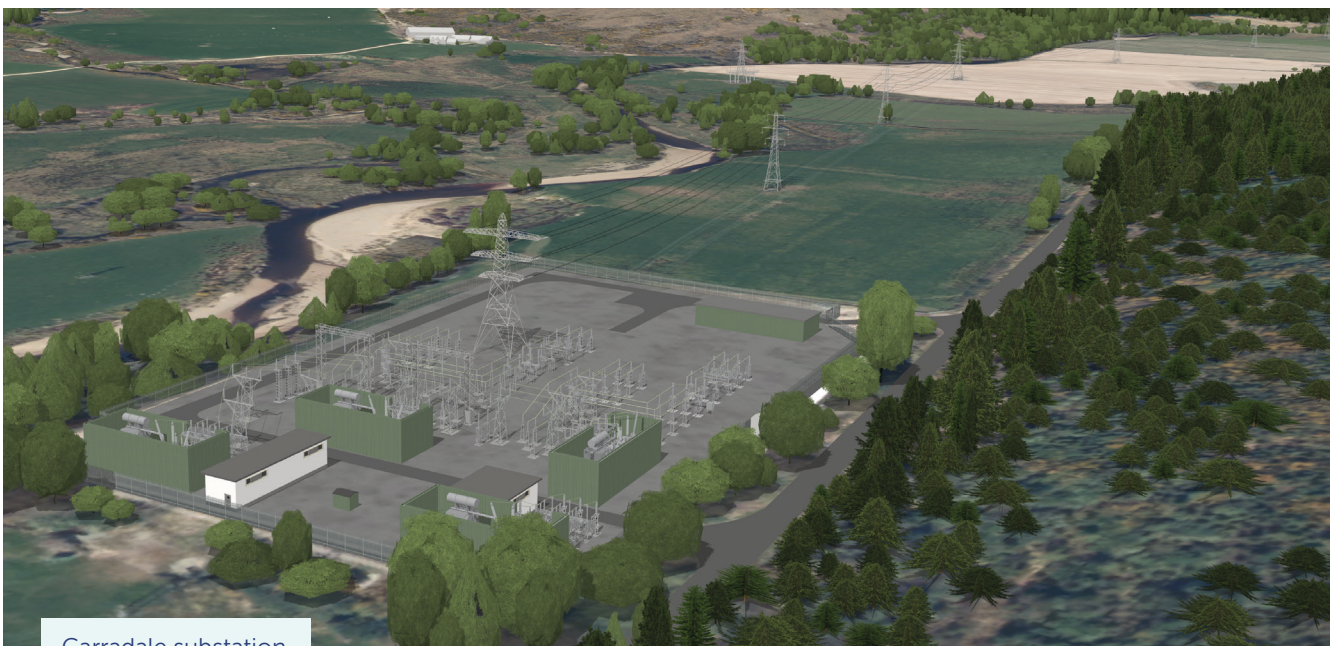
We understand that local stakeholders need to be able to visualise what the development may look like in their local area.

We've provided 3D visualisations which model the potential alignment into the local landscape to help understanding of the proposals in terms of the visual impact, distance and height.

The following are some images taken from the 3D model created for the overhead line from a range of different angles.



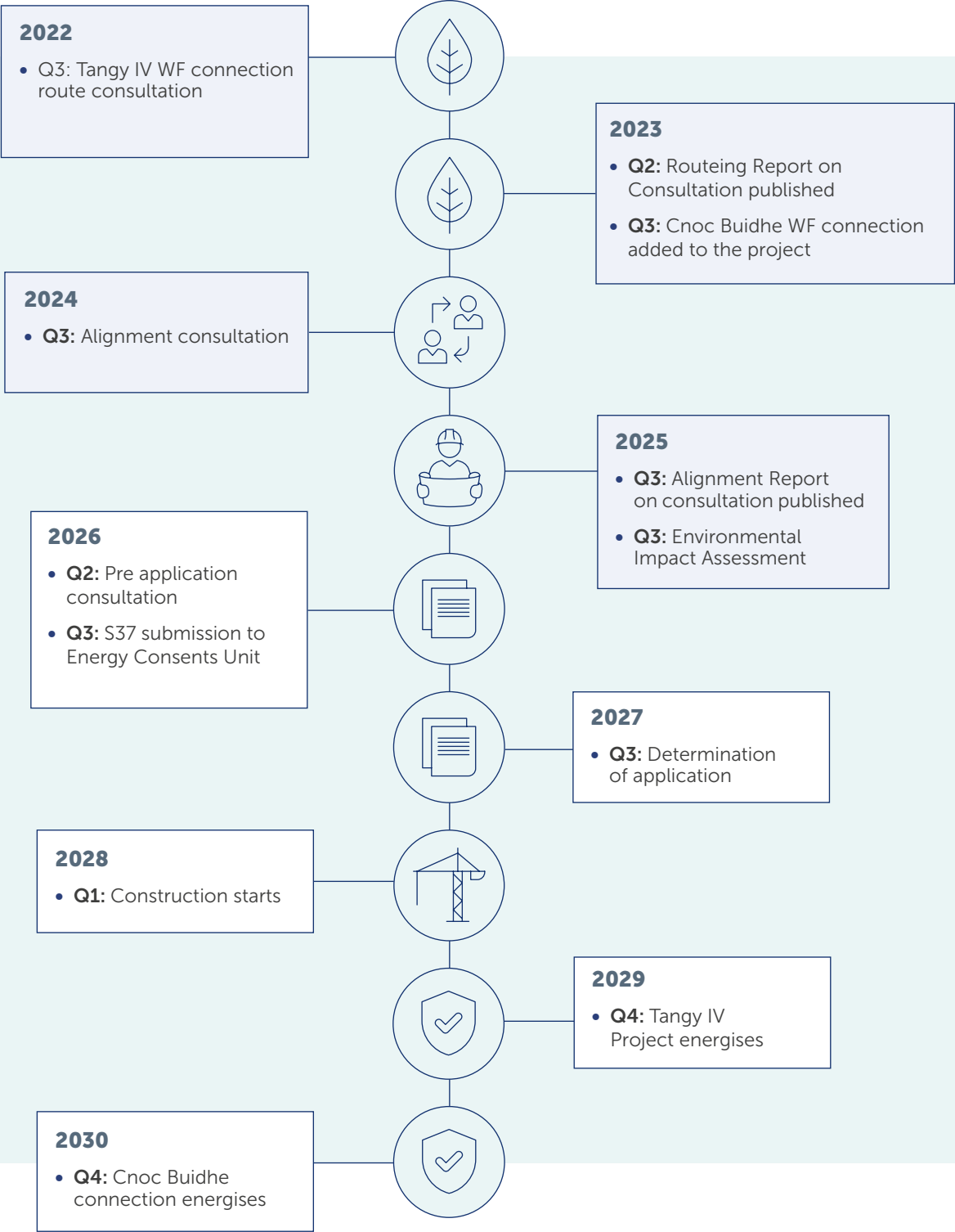
Terminal tower and Carradale water crossing



Carradale substation

Project timeline

- Complete
- Ongoing



Other projects in the local area

As the transmission operator in the north of Scotland, we need to maintain and invest in the high voltage electricity transmission network in our area to provide a safe and reliable electricity supply to our communities.

We also need to offer terms for connections to the transmission network for new generation such as wind farms and pumped storage schemes and for new sources of electricity demand.

Therefore, as well as Glendye Wind Farm Connection, we have a number of other projects within the local area we are currently developing, described below.



Crossaig substation

The Crossaig Substation Project comprises the construction of a new 275kV substation and overhead line, which will connect into the recently completed 275kV overhead line between Inveraray and Crossaig. Associated access, drainage, fencing and landscaping are included in the project plans.

The new substation will provide an upgrade to the existing 132kV Crossaig substation and will support the export of renewable energy from the Argyll area.

Construction on this project commenced in January 2024.

Craig Murrail substation

The Craig Murrail Substation Project comprises the construction of a new 275kV substation, which will connect into the recently completed 275kV overhead line between Inveraray and Crossaig.

A temporary overhead line diversion is required to enable the build of the new substation, and associated access, drainage, fencing and landscaping are included in the project plans. The project will support the export of renewable energy from the Argyll area.

Construction on this project commenced in October 2024.

Local renewable developments

We know that local stakeholders are keen to understand the full extent of renewable developments being proposed in their local area. Applications to connect to the transmission network in our licence area are made to National Grid ESO and undergo a lengthy process of assessment before we begin to develop a network connection for those developments. We aim to be transparent about the renewable developments looking to connect to our network but are not permitted to disclose any details of these developments until they are in the public domain. A list of projects that hold contracts for Transmission Entry Capacity (TEC) with National Grid, the Electricity System Owner is available from their website: [Transmission Entry Capacity \(TEC\) register | ESO \(nationalgrideso.com\)](https://www.nationalgrideso.com/tecregister)

Have your say

We value community and stakeholder feedback. Without this, we would be unable to progress projects and reach a balanced proposal.

The feedback period :

We intend to submit our planning application in late summer 2026. Our formal feedback period will close on **10 June 2026**, however we will welcome final comments from members of the public, statutory consultees and other key stakeholders regarding our proposals until we submit our planning application.

How to provide feedback :

Email the feedback form to the Community Liaison Manager.

Or write to us enclosing the feedback form at the back of this booklet.

Submit your feedback online by scanning the QR code on this page or via the form on our project webpage at:

[ssen-transmission/
tangy-iv-and-cnoc-buidhe-shared-use](https://www.ssen-transmission.com/tangy-iv-and-cnoc-buidhe-shared-use)



Our Community Liaison Team

Each project has a dedicated Community Liaison Manager who works closely with community members to make sure they are well informed of our proposals and that their views, concerns, questions or suggestions are put to our project teams.

Throughout the life of our projects, you will hear from us regularly. We aim to establish strong working relationships by being accessible to key local stakeholders such as community councils, residents' associations and development trusts, and regularly engage with interested individuals.

What we're seeking views on

We encourage all interested community members to fill in a feedback form when submitting feedback, however if you prefer, you can email us to provide your feedback or ask any questions.

Community Liaison Manager Caitlin Marini



SSEN Transmission, 1 Waterloo
Street Glasgow, G2 6AY



Caitlin.Marini@sse.com

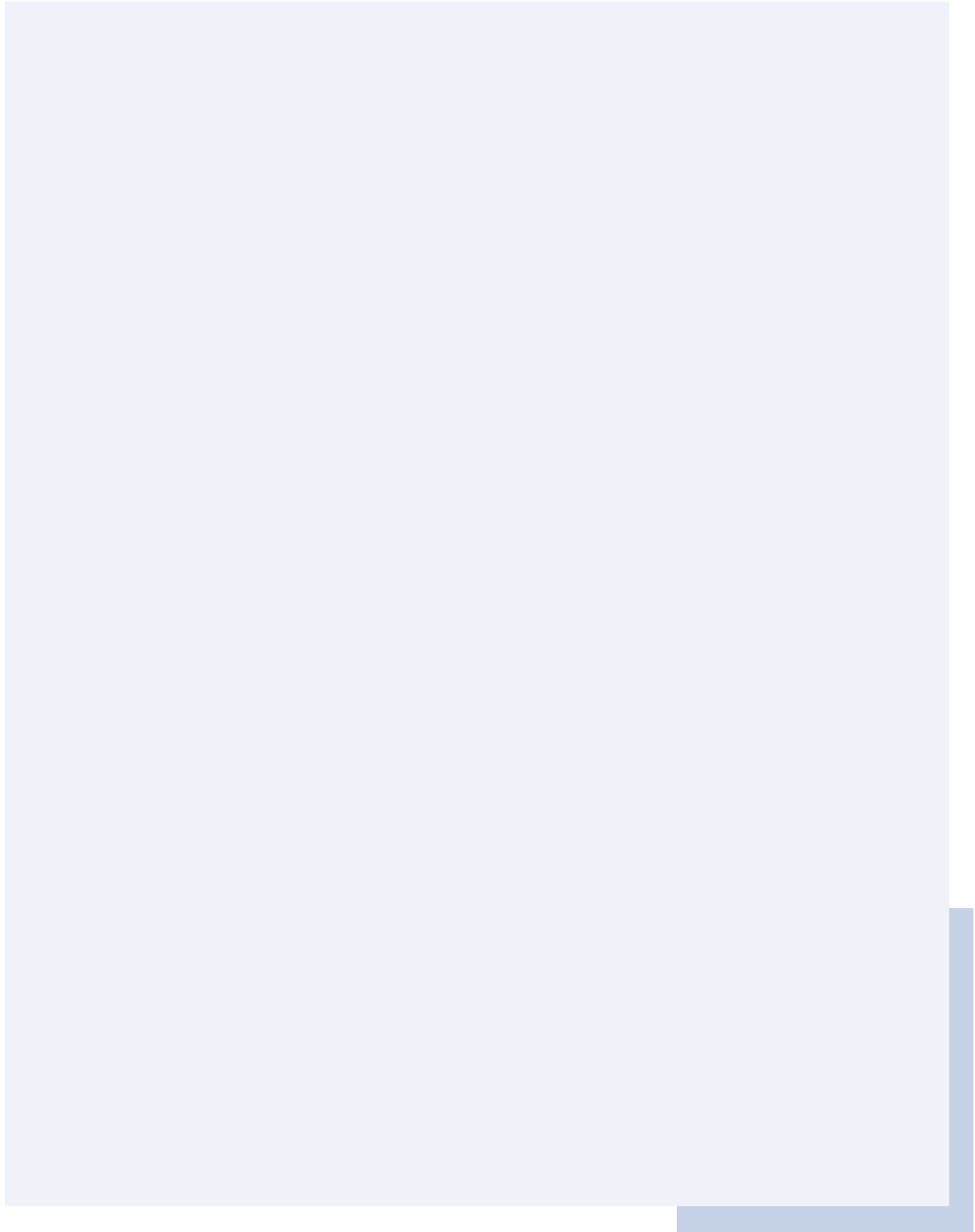


@ssentransmission

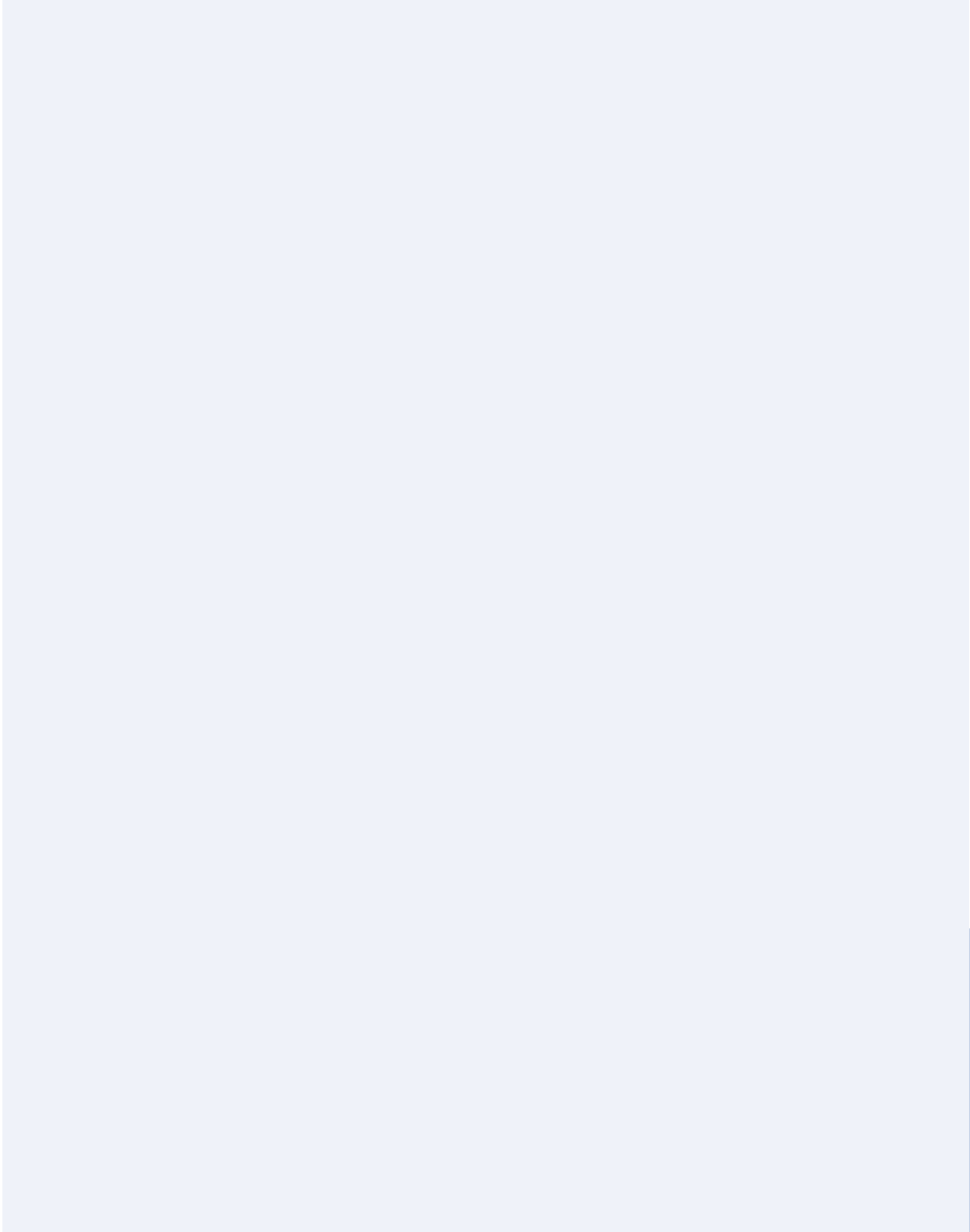


SSENTransmission

Notes



Notes



Your feedback

We are keen to receive your views and comments in regards to the following questions;

Q1. Do you have any final comments regarding the alignment being proposed or concerns relating to the construction phase of the project?

Comments:

Q2. SSEN Transmission Community Benefit Fund will provide an opportunity for local groups and organisations to apply for community funding to support communities in areas with new infrastructure. What suggestions for social or environmental community benefit opportunities do you have that you would like us to consider, or are there any local initiatives you would like us to support?

Comments:



Q3. If consent is granted, we will continue to provide updates as the project develops and at key milestones. We continuously seek to identify the best methods of communication based on community needs. Please tell us how you would prefer to receive project updates so that we can consider this for future improvements (Select all that apply).

- Newsletter Email to a mailing list Text message Letter
 Public meetings Website updates Other (please state)

Q4. We are committed to achieving biodiversity net gain as part of our proposals. Do you have any suggestions for nature projects that we could consider to leave a positive nature legacy in your area?

Comments:



Tangy IV and Cnoc Buidhe 132kV OHL Shared Use Connection project

Full name: **Email:**

Telephone: **Address:**

We would like to send you relevant communications via email such as invitations to stakeholder events, surveys, updates on projects, services and future developments from the Scottish and Southern Electricity Networks group listed below. If you are happy to receive email updates please opt in by ticking the box below. You can unsubscribe at any time by contacting us at stakeholder.admin@sse.com or by clicking on the unsubscribe link that will be at the end of each of our emails.

If you would like to be kept informed of progress on the project, please tick this box

Thank you for taking the time to complete this feedback form.
Please submit your completed form by one of the methods below:

Post: SSEN Transmission, 1 Waterloo Street Glasgow, G2 6AY

Email: Caitlin.Marini@sse.com

Online: [ssen-transmission/tangy-iv-and-cnoc-buidhe-shared-use](https://www.ssen-transmission.com/tangy-iv-and-cnoc-buidhe-shared-use)

For information on how we collect and process your data please see our privacy notice available at today's event. This can also be obtained online at: [ssen-transmission.co.uk/privacy](https://www.ssen-transmission.co.uk/privacy)

Comments forms and all the information from today's event will also be available to download from the project website.

We intend to use Artificial Intelligence (AI) to assist our experienced teams in the analysis of your feedback, so we can categorise key points raised more quickly. You can learn more about how we're utilising AI at: [ssen-transmission.co.uk/AIFAQ](https://www.ssen-transmission.co.uk/AIFAQ)

Any information given on the feedback form can be used and published anonymously as part of Scottish and Southern Electricity Networks consultation report. By completing this feedback form you consent to Scottish and Southern Electricity Networks using feedback for this purpose.

Scottish and Southern Electricity Networks is a trading name of: Scottish and Southern Energy Power Distribution Limited Registered in Scotland No. SC213459; Scottish Hydro Electric Transmission plc Registered in Scotland No. SC213461; Scottish Hydro Electric Power Distribution plc Registered in Scotland No. SC213460; (all having their Registered Offices at Inveralmond House 200 Dunkeld Road Perth PH1 3AQ); and Southern Electric Power Distribution plc Registered in England & Wales No. 04094290 having its Registered Office at Number One Forbury Place, 43 Forbury Road, Reading, Berkshire, RG1 3JH which are members of the SSE Group.