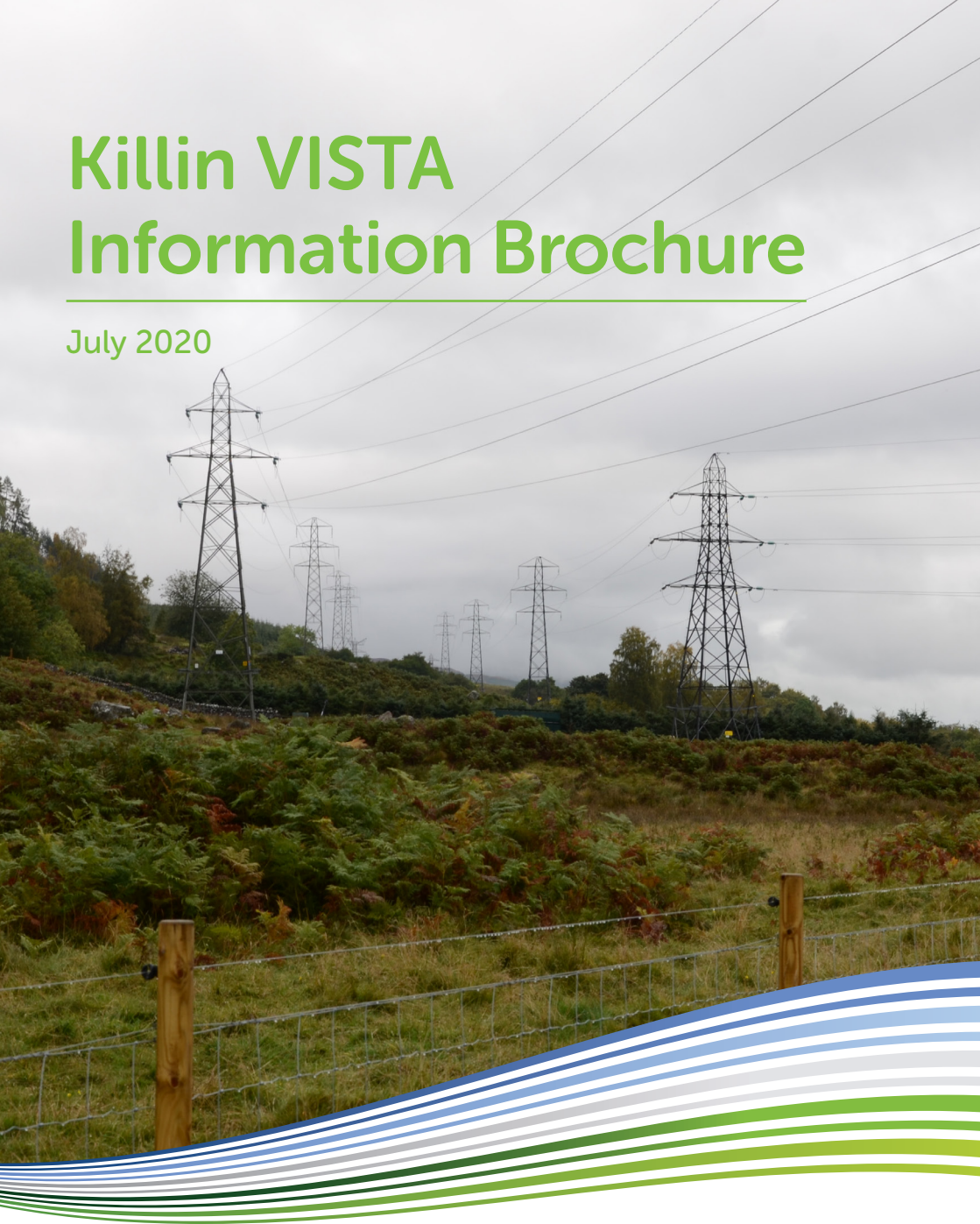


# Killin VISTA Information Brochure

---

July 2020



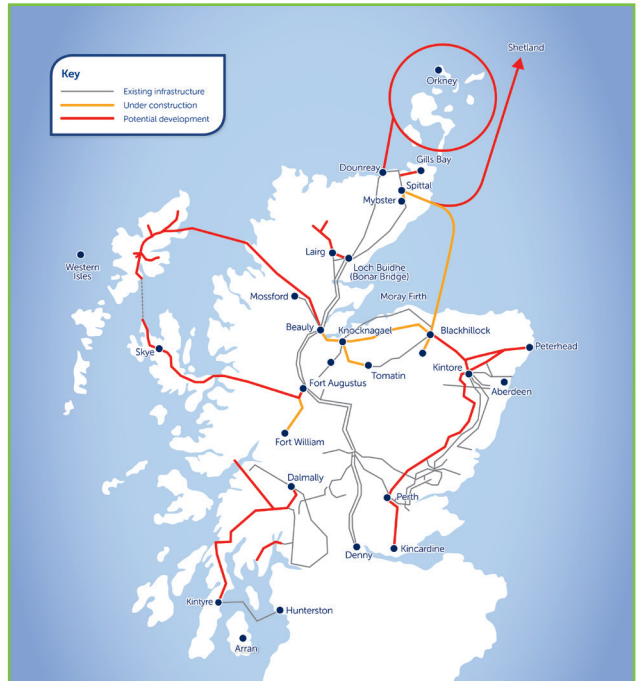
**Scottish & Southern**  
Electricity Networks



# Who we are

We are part of Scottish and Southern Electricity Networks (SSEN), operating as Scottish Hydro Electric Transmission plc under license for the transmission of electricity in the north of Scotland.

We own and maintain the 132kV, 275kV and 400kV electricity transmission network in our licence area, comprising underground cables, overhead wooden poles, steel towers and electricity substations; extending over a quarter of the UK land mass across some of its most challenging terrain.





# VISTA Overview

---

## Background

**The electricity and gas markets regulator, Ofgem, is responsible for administering a £500m fund for GB electricity transmission owners to mitigate the impact of existing electricity infrastructure on the visual amenity of nationally designated landscapes.**

In response to Ofgem's funding, SSEN is taking forward a number of engineering and landscaping proposals across its network region as part of its VISTA (Visual Impact of Scottish Transmission Assets) initiative.

VISTA represents an opportunity to reassess the historic electricity infrastructure within, and in some instances in close proximity to, National Parks and National Scenic Areas (NSAs) in the north of Scotland.

Awards from the Ofgem fund will be utilised to further enhance designated landscapes by reducing the visual impact of existing overhead electricity transmission lines and substations.

In order to ensure that SSEN makes the right choices and chooses the most beneficial proposals, stakeholders are encouraged to engage in the process. SSEN has published a policy document that sets out further information on VISTA, which is available online.

[www.ssen-transmission.co.uk/sustainability-and-environment/vista/](http://www.ssen-transmission.co.uk/sustainability-and-environment/vista/)

# Key Objectives of VISTA

The key objectives for the VISTA initiative are set out in the policy document. SSEN aims to consider projects which will:

- Deliver the most beneficial enhancements for Scotland's precious landscapes while keeping undesirable environmental impacts associated with particular mitigation measures (such as undergrounding) to a minimum
- Enable users of National Parks and NSAs to benefit from their recreational, educational and social offering
- Protect the technical viability of the wider transmission network
- Be economical and efficient
- Involve a wider range of stakeholders.

## Background

1

### Identifying Priorities

Identification of transmission infrastructure  
Screening of transmission infrastructure  
Landscape & Visual Impact Assessment (LVIA)  
Identify most important impacts

3

### Developing the Projects

Review priority areas in more detail  
Technical, Environmental & Economic  
Feasibility  
Detailed development of projects in collaboration with Stakeholders

2

### Defining the Projects

Review priority areas in more detail  
Identify mitigation options  
Appraisal of options & potential benefits  
Selection of infrastructure & mitigation proposals

2

### Developing the Projects

Environmental Impact Assessment (EIA)  
Consent applications  
Submission of Potential Projects to OFGEM  
Implementation - Construction & maintenance

# Selection of Killin

---

Following assessment of all of SSEN's infrastructure in National Parks and National Scenic Areas, the overhead lines near Killin in the Loch Lomond and the Trossachs National Park were identified as a priority area, where the impacts of the existing infrastructure were higher than elsewhere in Scotland. The potential for mitigation in this location was considered to be high, due to the numbers of people that could potentially benefit, and the lower level of other environmental constraints.



# What is there now?

---

Two parallel overhead lines run south from the Killin substation, across the shoulder of Creag Bhuidhe, towards the River Dochart. After crossing the river to the south of Killin the two overhead lines diverge: one line continues west through Glen Dochart and the other passes south through Glen Ogle.

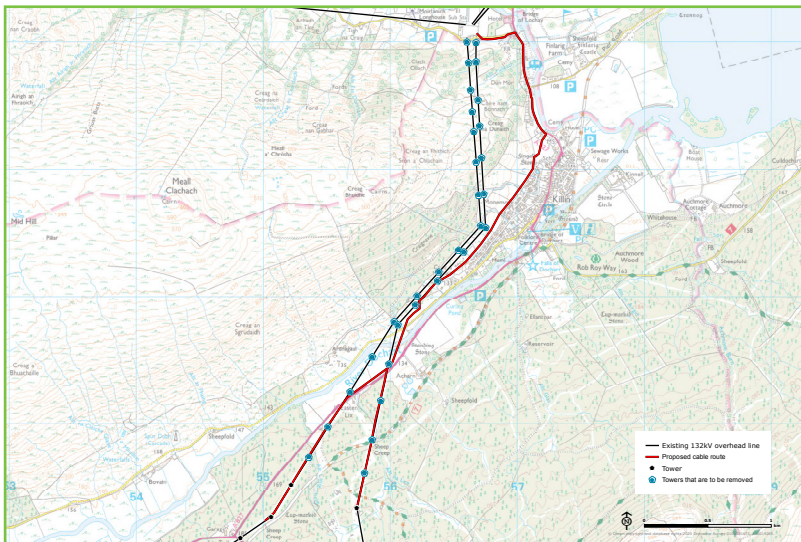
The pylons are clearly visible from Killin village, and appear in the backdrop to the village in wider views. They are prominent from the Falls of Dochart which is a popular location for visitors. The pylons are also seen from the A827 both on approach to the National Park from the east, and between Killin and Lix Toll.



# What is proposed?

A total of 7.8 km of overhead line will be removed, including 31 steel lattice towers, between Killin substation and Lix Toll. The removed towers will include the most prominent section above Killin and the Falls of Dochart, as well as those crossing the A827. The project will significantly reduce the quantity of electricity infrastructure in the Killin area.

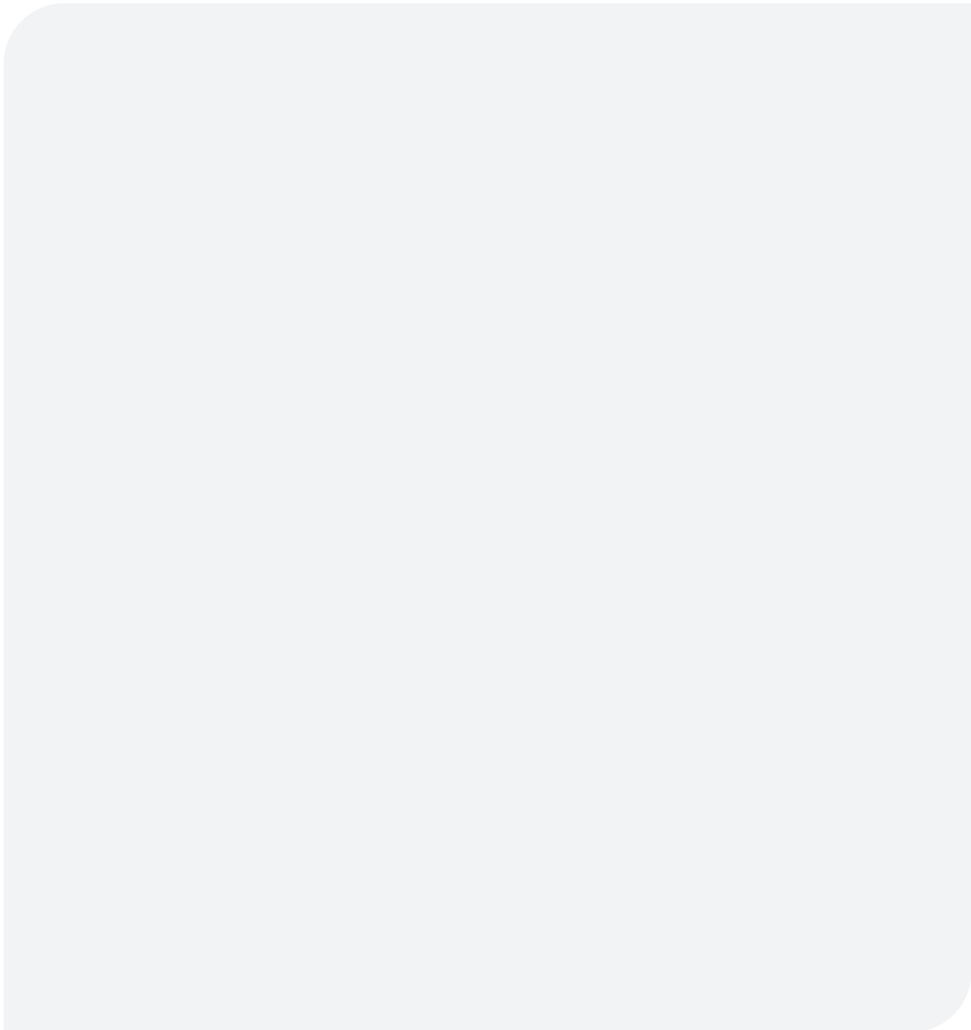
The proposals will enhance the character and special qualities of this key gateway location to the National Park, and have been designed to benefit the maximum number of people, by focusing on a well visited area, including the popular Falls of Dochart. This will enhance the enjoyment of the landscape and its scenic views, for many people who visit the area.





# Notes

---

A large, light grey rounded rectangle with rounded corners, intended for taking notes. It occupies the majority of the page below the 'Notes' header.



# Consultation questions

---

We welcome feedback from stakeholders and other interested parties on our proposals and progress with the VISTA work stream. Feedback can be provided by filling in the form below or can be emailed to Louise Anderson, Community Liaison Manager at:

[louise.anderson@sse.com](mailto:louise.anderson@sse.com)

Name

-----

Organisation

-----

Email

-----

**Q1) Have you found the information within this leaflet helpful and informative?**

Strongly agree

Agree

Neither agree  
nor disagree

Disagree

Strongly disagree

**Q2) Are you supportive of SSEN seeking to secure funds for the implementation of the undergrounding schemes?**

Strongly support

Support

Neither support  
nor object

Object

Strongly object

### Q3) Are you supportive of the VISTA project?

Strongly support

Support

Neither support  
nor object

Object

Strongly object

Please explain your reasoning for your selection:

-----

-----

If you have any additional comments, please use the space below to share your views:

-----

-----

-----

Tick here if you would like to be kept updated on SSEN's VISTA work stream

For information on how we collect and process your data, please see our privacy notice at: <https://www.ssen.co.uk/PrivacyNotice/>

To complete this feedback form online, please visit: [www.ssen-transmission.co.uk/talk-to-us/surveys/vista-consultation-questions-loch-lomond-and-the-trossachs-national-park-proposals/](http://www.ssen-transmission.co.uk/talk-to-us/surveys/vista-consultation-questions-loch-lomond-and-the-trossachs-national-park-proposals/)



Scottish & Southern  
Electricity Networks

TRANSMISSION

 SSEN Community

 @ssencommunity

[ssen-transmission.co.uk](http://ssen-transmission.co.uk)

