

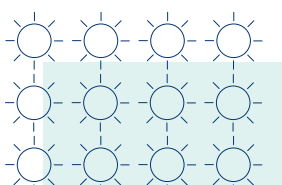
LT14 Culvert Works - Traffic Management and Emergency Access Update

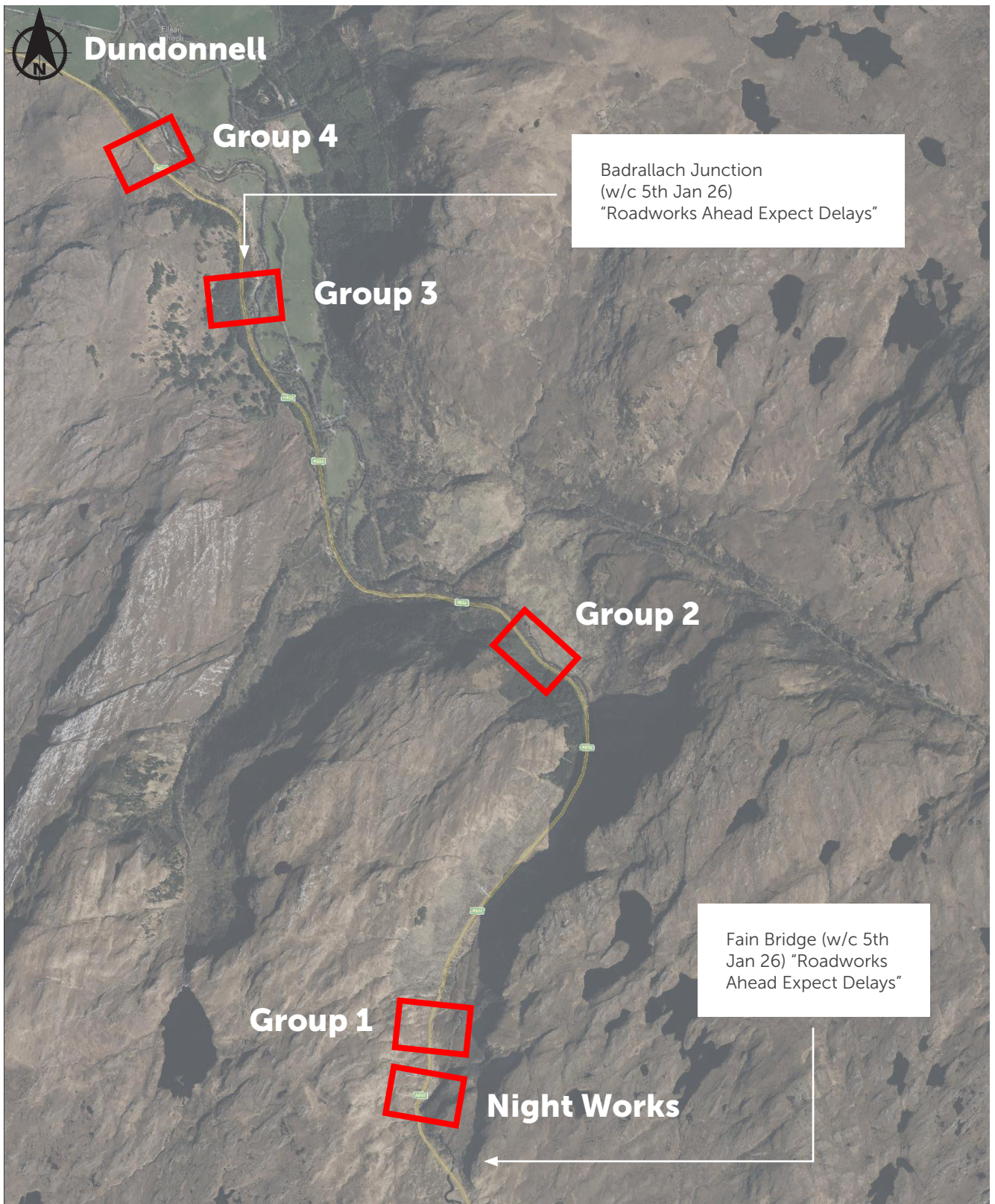
Overview

- **Culverts:** 37 culverts will be fully upgraded to increase road resilience and safety.
- **Rock face scaling:** Rock faces around the culvert works will be scaled back to remove any loose debris before works start. This will help prevent rocks slipping.
- **Road safety barriers:** We will be making significant investment in improvements to bring these up to present-day specification.
- **Clearing of ditches:** Ditches will be cleared out along the route to help surface run-off and reduce the future flooding risk.
- **Resurfacing:** Full-width carriageway resurfacing and relining will take place along the entire 4.8km stretch we are upgrading culverts.
- **Temporary bypasses** will also be created to facilitate culvert works being conducted safely under single lane closure. These will go on the verges next to the main carriageway.



Time	Activity	Type of Closure	Timings
Mid January 2026 to August 2027	Culvert replacement	Day: Single-lane closure (with convoy system) Night: Single-lane closure	7am-7pm with traffic management convoy systems (up to 15-minute delays)
June to mid-July 2026	Culvert replacement	Day: Single-lane closure (with convoy system) Night: Full road closure	9pm-7am full closure during night

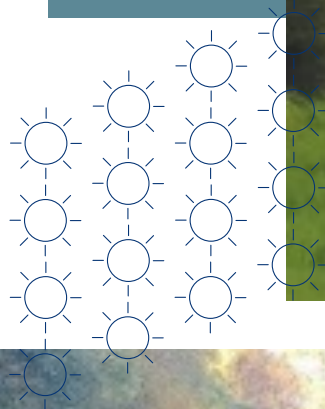




Corrieshalloch Visitor Centre
(w/c 5th Jan 26)
"Roadworks 6 miles (TBC) Ahead Expect Delays"

Traffic Management

- Variable Message Signage (VMS) will be employed from w/c 5th Jan 26 across three initial locations (see map).
- There will also be additional fixed signage advising of convoy system for workforce protection.
- Additional VMS will also be installed for the duration of the night works (June/July 26 only).
- Contact information for any fault reporting during non- working hours will be provided
- *Note – exact locations may vary based on installation and visibility requirements.



Single Lane Closure

- During the day traffic will be passing by a convoy working system.
- We expect these to be approximately 500m metre sections at a time.
- There will be 5 distinct sections (on a one-by-one rolling basis).
- The lights will be manned by operatives during the day.
- Overnight it will be controlled by temporary lights.
- We expect no one to be delayed longer than 15 minutes at a time and hope the real time figure will be quicker.

Full Road Closure (Night Works June/Jul 26 only)

- Full lane night closures are required to safely conduct work on specifically identified culverts.
- This is currently planned to take place during June/July 2026. Exact dates TBC. We will provide written updates to confirm.
- The full road closure will be in place between 9pm and 7am during this period, reverting to single-lane closure routine out with these times.
- Emergency access will be maintained at all times.
- For all other traffic the diversionary route would be by Achnasheen and Garve.

Emergency Access Procedure

Single Lane Closure

- One lane always remains open allowing for access by emergency service.

Full Road Closure (Night works June/Jul 26 only)

- Senior site staff will contact emergency services ahead of night works (initial engagement with key stakeholders has already begun).
- They will provide name and contact details of site staff whilst night working is undertaken.
- A dedicated contact number will be provided ahead of the works beginning.
- Emergency services will contact the site in an emergency and confirm direction of travel.
- Site works will cease.
- A temporary bridge will be lifted in place, to allow emergency service access.
- Access will be open to emergency service.
- The temporary bridge will remain in place until emergency services confirm they access is no longer required.

