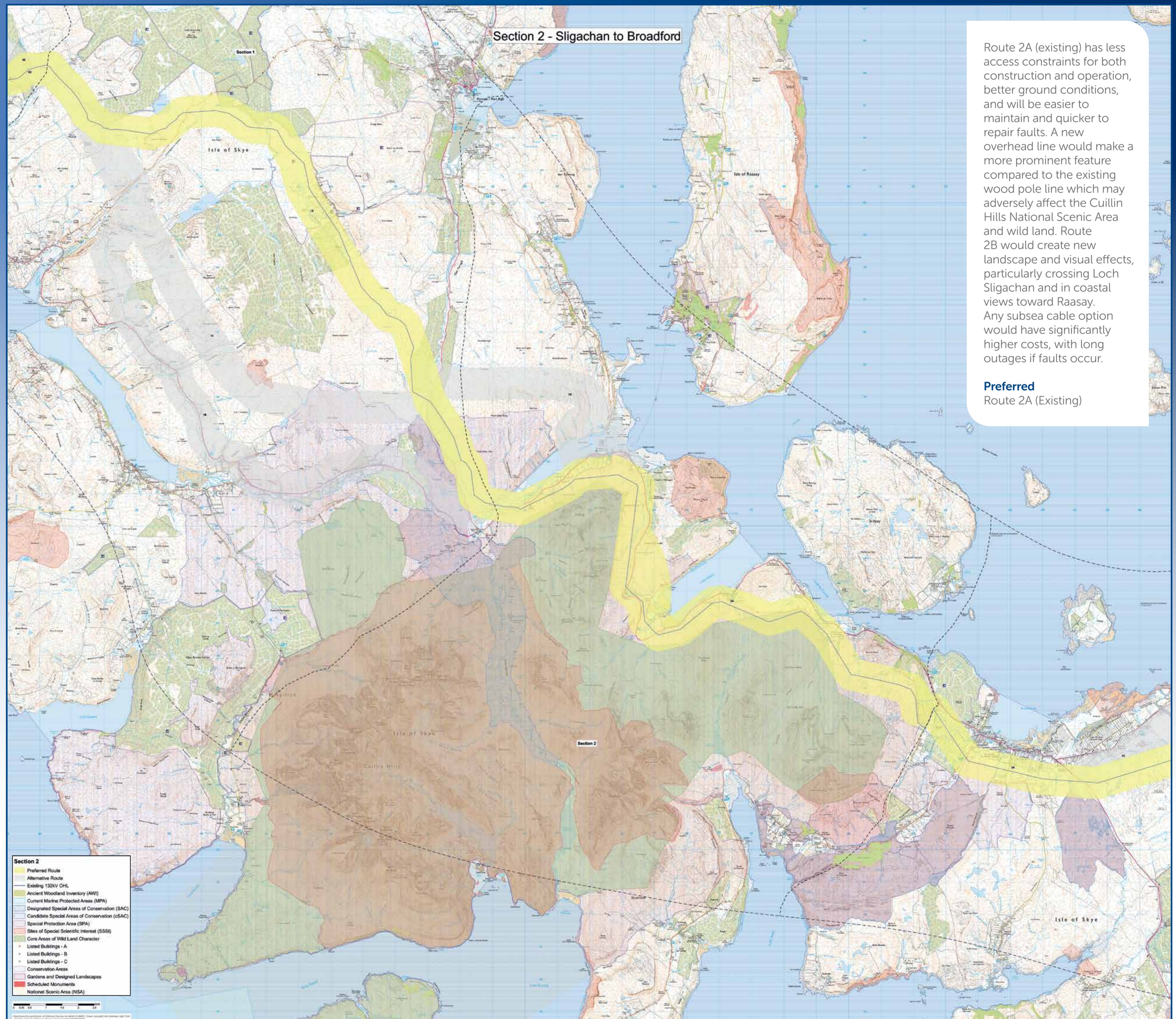


Skye Reinforcement Project

Section 2 – Sligachan to Broadford



Route 2A (existing) has less access constraints for both construction and operation, better ground conditions, and will be easier to maintain and quicker to repair faults. A new overhead line would make a more prominent feature compared to the existing wood pole line which may adversely affect the Cuillin Hills National Scenic Area and wild land. Route 2B would create new landscape and visual effects, particularly crossing Loch Sligachan and in coastal views toward Raasay. Any subsea cable option would have significantly higher costs, with long outages if faults occur.

Preferred
Route 2A (Existing)