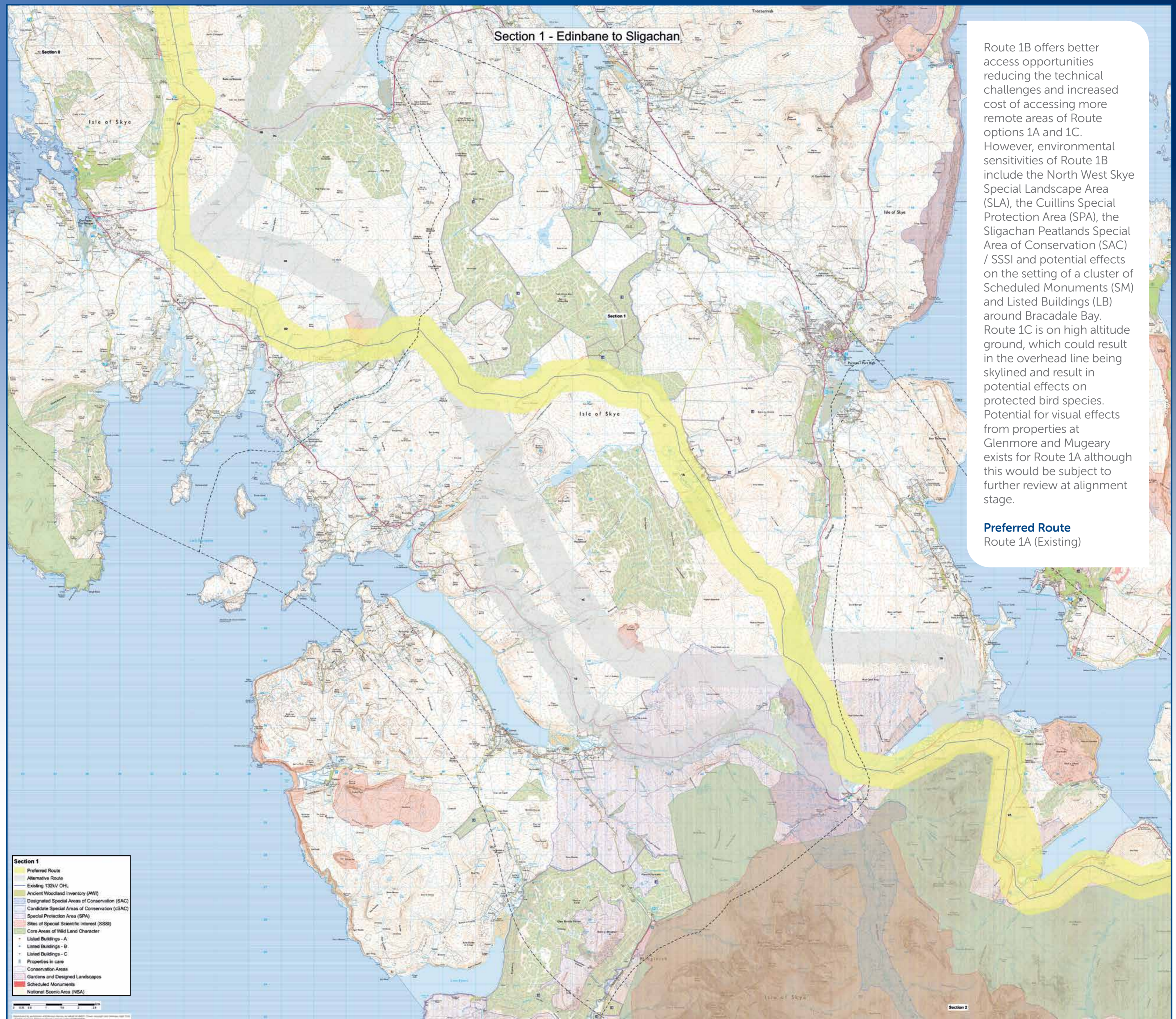


Skye Reinforcement Project

Section 1 – Edinbane to Sligachan



Route 1B offers better access opportunities reducing the technical challenges and increased cost of accessing more remote areas of Route options 1A and 1C. However, environmental sensitivities of Route 1B include the North West Skye Special Landscape Area (SLA), the Cuillins Special Protection Area (SPA), the Sligachan Peatlands Special Area of Conservation (SAC) / SSSI and potential effects on the setting of a cluster of Scheduled Monuments (SM) and Listed Buildings (LB) around Bracadale Bay. Route 1C is on high altitude ground, which could result in the overhead line being skylined and result in potential effects on protected bird species. Potential for visual effects from properties at Glenmore and Mugeary exists for Route 1A although this would be subject to further review at alignment stage.

Preferred Route
Route 1A (Existing)



@assencommunity



@assencommunity